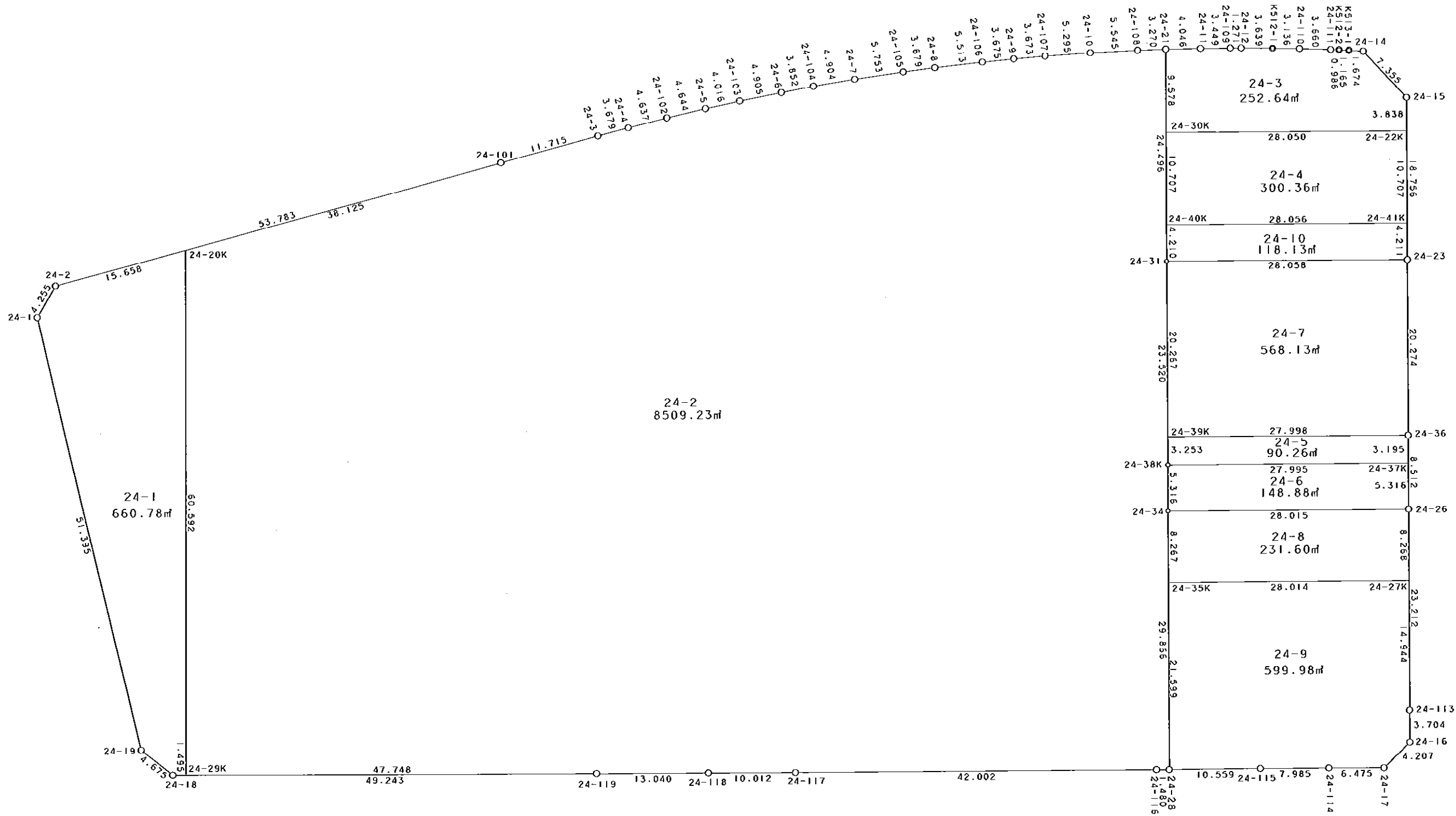
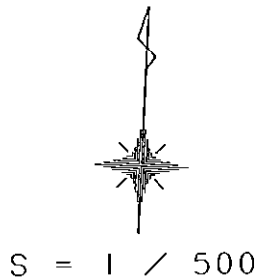


24街区



凡 例

記号	名称
⊙	地区界点
○	街区点
○	画地点 (折れ点)
┆	画地点 (直線中)

面積 (座標法) 計算書

地番 = 24街区

測点名	[1] X (i)	[2] X (i+1)-X (i-1)	[3] Y (i)	[4] Y (i+1)-Y (i-1)	[2] * [3]	[1] * [4]	方向角	夾角	距離
24-2	-149471.802	-20.527	-40960.764	-53.093	840801.602628	7935906.383586	207-53-02	136-02-52	4.255
24-1	-149475.563	-53.013	-40962.754	12.698	2171558.477802	-1898040.698974	163-23-39	135-30-37	51.395
24-19	-149524.815	-51.947	-40948.066	18.508	2127129.184502	-2767405.276020	125-12-10	141-48-31	4.675
24-18	-149527.510	-0.139	-40944.246	52.997	5691.250194	-7924509.447470	87-01-29	141-49-19	49.243
24-119	-149524.954	3.220	-40895.069	62.200	-131682.122180	-9300452.138800	87-04-52	180-03-23	13.040
24-118	-149524.290	1.170	-40882.046	23.022	-47831.993820	-3442348.204380	87-06-11	180-01-19	10.012
24-117	-149523.784	2.684	-40872.047	51.944	-109700.574148	-7766863.436096	87-01-39	179-55-28	42.002
24-116	-149521.606	2.260	-40830.102	43.423	-92276.030520	-6492676.697338	86-49-28	179-47-49	1.480
24-28	-149521.524	0.680	-40828.624	12.020	-27763.464320	-1797248.718480	86-45-12	179-55-44	10.559
24-115	-149520.926	1.012	-40818.082	18.516	-41307.898984	-2768529.465816	87-01-41	180-16-29	7.985
24-114	-149520.512	0.732	-40810.108	14.441	-29872.999056	-2159225.713792	87-11-06	180-09-25	6.475
24-17	-149520.194	3.413	-40803.641	9.316	-139262.826733	-1392930.127304	42-37-48	135-26-42	4.207
24-16	-149517.099	6.794	-40800.792	2.650	-277200.580848	-396220.312350	356-55-14	134-17-26	3.704
24-113	-149513.400	26.881	-40800.991	-1.378	-1096771.439071	206029.465200	357-05-19	180-10-05	23.212
24-26	-149490.218	31.682	-40802.170	-1.627	-1292694.349940	243220.584686	356-58-59	179-53-40	8.512
24-36	-149481.718	28.748	-40802.618	-1.471	-1172993.662264	219887.607178	357-06-28	180-07-29	20.274
24-23	-149461.470	38.979	-40803.641	-1.990	-1590485.122539	297428.325300	357-02-41	179-56-13	18.756
24-15	-149442.739	23.832	-40804.608	-6.266	-972455.417856	936408.202574	313-54-34	136-51-53	7.355
24-14	-149437.638	5.130	-40809.907	-6.973	-209354.822910	1042028.649774	270-59-33	137-04-59	1.674
K513-1	-149437.609	0.039	-40811.581	-2.839	-1591.651659	424253.371951	270-29-30	179-29-57	1.165
K512-2	-149437.599	0.002	-40812.746	-2.151	-81.625492	321440.275449	269-32-06	179-02-36	0.986
24-111	-149437.607	-0.083	-40813.732	-4.645	3387.539756	694137.684515	268-49-33	179-17-27	3.660
24-110	-149437.682	-0.167	-40817.391	-6.794	6816.504297	1015279.611508	268-19-09	179-29-36	3.136
K512-1	-149437.774	-0.225	-40820.526	-6.772	9184.618350	1011992.605528	267-54-21	179-35-12	3.639
24-12	-149437.907	-0.197	-40824.163	-4.906	8042.360111	733142.371742	267-06-46	179-12-25	1.271
24-109	-149437.971	-0.260	-40825.432	-4.712	10614.612320	704151.719352	266-44-31	179-37-45	3.449
24-11	-149438.167	-0.466	-40828.875	-7.480	19026.255750	1117797.489160	266-10-25	179-25-54	4.046
24-21	-149438.437	-0.543	-40832.912	-7.296	22172.271216	1090302.836352	265-12-42	179-02-17	3.270
24-108	-149438.710	-0.800	-40836.171	-8.779	32668.936800	1311922.435090	264-32-47	179-20-05	5.545
24-10	-149439.237	-1.136	-40841.691	-10.780	46396.160976	1610954.974860	263-23-45	178-50-58	5.295
24-107	-149439.846	-1.103	-40846.951	-8.900	45054.186953	1330014.629400	262-16-17	178-52-32	3.673
24-9	-149440.340	-1.025	-40850.591	-7.276	41871.855775	1087327.913840	261-41-29	179-25-12	3.675
24-106	-149440.871	-1.425	-40854.227	-9.076	58217.273475	1356325.345196	260-40-03	178-58-34	5.513
24-8	-149441.765	-1.553	-40859.667	-9.059	63455.062851	1353792.949135	259-40-47	179-00-44	3.679
24-105	-149442.424	-1.760	-40863.286	-9.266	71919.383360	1384733.500784	258-58-03	179-17-16	5.753
24-7	-149443.525	-2.126	-40868.933	-10.443	86887.351558	1560638.731575	257-56-10	178-58-07	4.904
24-104	-149444.550	-1.913	-40873.729	-8.544	78191.443577	1276854.235200	256-40-15	178-44-05	3.852
24-6	-149445.438	-2.076	-40877.477	-8.507	84861.642252	1271332.341066	255-59-01	179-18-46	4.905
24-103	-149446.626	-2.226	-40882.236	-8.639	91003.857336	1291069.402014	255-01-21	179-02-20	4.016
24-5	-149447.664	-2.308	-40886.116	-8.347	94365.155728	1247439.651408	254-07-45	179-06-24	4.644
24-102	-149448.934	-2.604	-40890.583	-8.908	106479.078132	1331291.104072	253-16-50	179-09-05	4.637
24-4	-149450.268	-2.442	-40895.024	-7.949	99865.648608	1187980.180332	252-28-17	179-11-27	3.679
24-3	-149451.376	-4.768	-40898.532	-14.637	195004.200576	2187519.790512	251-47-44	179-19-27	11.715
24-101	-149455.036	-20.426	-40909.661	-62.232	835620.735586	9300885.800352	251-50-10	180-02-26	53.783
合計				倍面積 面積	22960.068129 11480.03	-22960.068129 11480.03			442.705

地番	筆種別	面積	坪数
24-1	筆界	660.78	199.88
24-2	筆界	8509.23	2574.04
24-3	筆界	252.64	76.42
24-4	筆界	300.36	90.85
24-5	筆界	90.26	27.30
24-6	筆界	148.88	45.03
24-7	筆界	568.13	171.86
24-8	筆界	231.60	70.05
24-9	筆界	599.98	181.49
24-10	筆界計	118.13	35.73
	合	11479.99	3472.65

面積 (座標法) 計算書

地番 = 24-1  
測点名

	[1] X (i)	[2] X (i+1)-X (i-1)	[3] Y (i)	[4] Y (i+1)-Y (i-1)	[2]*[3]	[1]*[4]	方向角	夾角	距離
24-20K	-149466.921	55.630	-40945.886	-18.011	-2277819.638180	2692048.714131	251-50-13	74-48-03	15.658
24-2	-149471.802	-8.642	-40960.764	-16.868	353982.922488	2521290.356136	207-53-02	136-02-49	4.255
24-1	-149475.563	-53.013	-40962.754	12.698	2171558.477802	-1898040.698974	163-23-39	135-30-37	51.395
24-19	-149524.815	-51.947	-40948.066	18.508	2127129.184502	-2767405.276020	125-12-10	141-48-31	4.675
24-18	-149527.510	-2.617	-40944.246	5.313	107151.091782	-794439.660630	87-00-34	141-48-24	1.495
24-29K	-149527.432	60.589	-40942.753	-1.640	-2480680.461517	245224.988480	357-02-10	90-01-36	60.592
合計				倍面積 面積	1321.576877 660.78	-1321.576877 660.78			138.070

面積 (座標法) 計算書

地番 = 24-2  
測点名

	[1] X (i)	[2] X (i+1)-X (i-1)	[3] Y (i)	[4] Y (i+1)-Y (i-1)	[2]*[3]	[1]*[4]	方向角	夾角	距離
24-29K	-149527.432	-58.033	-40942.753	50.817	2376030.784849	-7598535.511944	87-01-31	89-59-21	47.748
24-119	-149524.954	3.142	-40895.069	60.707	-128492.306798	-9077211.382478	87-04-52	180-03-21	13.040
24-118	-149524.290	1.170	-40882.046	23.022	-47831.993820	-3442348.204380	87-06-11	180-01-19	10.012
24-117	-149523.784	2.684	-40872.047	51.944	-109700.574148	-7766863.436096	87-01-39	179-55-28	42.002
24-116	-149521.606	2.260	-40830.102	43.423	-92276.030520	-6492676.697338	86-49-28	179-47-49	1.480
24-28	-149521.524	29.909	-40828.624	-0.044	-1221143.315216	6578.947056	357-04-44	90-15-16	29.866
24-34	-149491.697	35.137	-40830.146	-1.782	-1434648.840002	266394.204054	357-11-48	180-07-04	5.316
24-38K	-149486.387	28.796	-40830.406	-1.516	-1175752.371176	226621.362692	356-56-20	179-44-32	23.520
24-31	-149462.901	47.950	-40831.662	-2.506	-1957878.192900	374554.029906	357-04-30	180-08-10	24.496
24-21	-149438.437	24.191	-40832.912	-4.509	-987788.974192	673817.912433	265-12-42	88-08-12	3.270
24-108	-149438.710	-0.800	-40836.171	-8.779	32668.936800	1311922.435090	264-32-47	179-20-05	5.545
24-10	-149439.237	-1.136	-40841.691	-10.780	46396.160976	1610954.974860	263-23-45	178-50-58	5.295
24-107	-149439.846	-1.103	-40846.951	-8.900	45054.186953	1330014.629400	262-16-17	178-52-32	3.673
24-9	-149440.340	-1.025	-40850.591	-7.276	41871.855775	1087327.913840	261-41-29	179-25-12	3.675
24-106	-149440.871	-1.425	-40854.227	-9.076	58217.273475	1356325.345196	260-40-03	178-58-34	5.513
24-8	-149441.765	-1.553	-40859.667	-9.059	63455.062851	1353792.949135	259-40-47	179-00-44	3.679
24-105	-149442.424	-1.760	-40863.286	-9.266	71919.383360	1384733.500784	258-58-03	179-17-16	5.753
24-7	-149443.525	-2.126	-40868.933	-10.443	86887.351558	1560638.731575	257-56-10	178-58-07	4.904
24-104	-149444.550	-1.913	-40873.729	-8.544	78191.443577	1276854.235200	256-40-15	178-44-05	3.852
24-6	-149445.438	-2.076	-40877.477	-8.507	84861.642252	1271332.341066	255-59-01	179-18-46	4.905
24-103	-149446.626	-2.226	-40882.236	-8.639	91003.857336	1291069.402014	255-01-21	179-02-20	4.016
24-5	-149447.664	-2.308	-40886.116	-8.347	94365.155728	1247439.651408	254-07-45	179-06-24	4.644
24-102	-149448.934	-2.604	-40890.583	-8.908	106479.078132	1331291.104072	253-16-50	179-09-05	4.637
24-4	-149450.268	-2.442	-40895.024	-7.949	99865.648608	1187980.180332	252-28-17	179-11-27	3.679
24-3	-149451.376	-4.768	-40898.532	-14.637	195004.200576	2187519.790512	251-47-44	179-19-27	11.715
24-101	-149455.036	-15.545	-40909.661	-47.354	635940.680245	7077293.774744	251-50-09	180-02-25	38.125
24-20K	-149466.921	-72.396	-40945.886	-33.092	2964318.362856	4946159.349732	177-02-10	105-12-01	60.592
合計				倍面積 面積	17018.467135 8509.23	-17018.467135 8509.23			374.952

面積 (座標法) 計算書

地番 = 24-3  
測点名

	[1] X (i)	[2] X (i+1)-X (i-1)	[3] Y (i)	[4] Y (i+1)-Y (i-1)	[2] * [3]	[1] * [4]	方向角	夾角	距離
24-22K	-149446.572	5.264	-40804.410	27.815	-214794.414240	-4156856.400180	357-02-35	89-58-03	3.838
24-15	-149442.739	8.934	-40804.608	-5.497	-364548.367872	821486.736283	313-54-34	136-51-59	7.355
24-14	-149437.638	5.130	-40809.907	-6.973	-209354.822910	1042028.649774	270-59-33	137-04-59	1.674
K513-1	-149437.609	0.039	-40811.581	-2.839	-1591.651659	424253.371951	270-29-30	179-29-57	1.165
K512-2	-149437.599	0.002	-40812.746	-2.151	-81.625492	321440.275449	269-32-06	179-02-36	0.986
24-111	-149437.607	-0.083	-40813.732	-4.645	3387.539756	694137.684515	268-49-33	179-17-27	3.660
24-110	-149437.682	-0.167	-40817.391	-6.794	6816.504297	1015279.611508	268-19-09	179-29-36	3.136
K512-1	-149437.774	-0.225	-40820.526	-6.772	9184.618350	1011992.605528	267-54-21	179-35-12	3.639
24-12	-149437.907	-0.197	-40824.163	-4.906	8042.360111	733142.371742	267-06-46	179-12-25	1.271
24-109	-149437.971	-0.260	-40825.432	-4.712	10614.612320	704151.719352	266-44-31	179-37-45	3.449
24-11	-149438.167	-0.466	-40828.875	-7.480	19026.255750	1117797.489160	266-10-25	179-25-54	4.046
24-21	-149438.437	-9.836	-40832.912	-3.548	401632.522432	530207.574476	177-04-25	90-54-00	9.578
24-30K	-149448.003	-8.135	-40832.423	28.502	332171.761105	-4259566.981506	87-04-32	90-00-07	28.050
合計				倍面積 面積	505.291948 252.64	-505.291948 252.64			71.847

面積 (座標法) 計算書

地番 = 24-4  
測点名

	[1] X (i)	[2] X (i+1)-X (i-1)	[3] Y (i)	[4] Y (i+1)-Y (i-1)	[2] * [3]	[1] * [4]	方向角	夾角	距離
24-30K	-149448.003	-12.124	-40832.423	-27.467	495052.296452	4104888.298401	177-04-37	90-00-05	10.707
24-40K	-149458.696	-9.262	-40831.877	28.565	378184.844774	-4269287.651240	87-04-35	89-59-58	28.056
24-41K	-149457.265	12.124	-40803.858	27.467	-494705.974392	-4105142.697755	357-02-42	89-58-07	10.707
24-22K	-149446.572	9.262	-40804.410	-28.565	-377930.445420	4268941.329180	267-04-32	90-01-50	28.050
合計				倍面積 面積	600.721414 300.36	-600.721414 300.36			77.520

面積 (座標法) 計算書

地番 = 24-5  
測点名

	[1] X (i)	[2] X (i+1)-X (i-1)	[3] Y (i)	[4] Y (i+1)-Y (i-1)	[2] * [3]	[1] * [4]	方向角	夾角	距離
24-37K	-149484.909	4.669	-40802.450	27.788	-190506.639050	-4153886.651292	356-59-11	90-00-46	3.195
24-36	-149481.718	1.770	-40802.618	-28.130	-72220.633860	4204920.727340	267-05-27	90-06-16	27.998
24-39K	-149483.139	-4.669	-40830.580	-27.788	190637.978020	4153837.466532	176-56-01	89-50-34	3.253
24-38K	-149486.387	-1.770	-40830.406	28.130	72269.818620	-4205052.066310	86-58-25	90-02-24	27.995
合計				倍面積 面積	180.523730 90.26	-180.523730 90.26			62.441

面積 (座標法) 計算書

地番 = 24-6

測点名	[1] X (i)	[2] X (i+1)-X (i-1)	[3] Y (i)	[4] Y (i+1)-Y (i-1)	[2] * [3]	[1] * [4]	方向角	夾角	距離
24-38K	-149486.387	-6.788	-40830.406	-27.696	277156.795928	4140174.974352	177-11-48	90-13-23	5.316
24-34	-149491.697	-3.831	-40830.146	28.236	156420.289326	-4221047.556492	86-58-26	89-46-38	28.015
24-26	-149490.218	6.788	-40802.170	27.696	-276965.129960	-4140281.077728	356-58-52	90-00-26	5.316
24-37K	-149484.909	3.831	-40802.450	-28.236	-156314.185950	4220855.890524	266-58-25	89-59-33	27.995
合計				倍面積 面積	297.769344 148.88	-297.769344 148.88			66.642

面積 (座標法) 計算書

地番 = 24-7

測点名	[1] X (i)	[2] X (i+1)-X (i-1)	[3] Y (i)	[4] Y (i+1)-Y (i-1)	[2] * [3]	[1] * [4]	方向角	夾角	距離
24-36	-149481.718	21.669	-40802.618	26.939	-884151.929442	-4026888.001202	357-06-28	90-01-01	20.274
24-23	-149461.470	18.817	-40803.641	-29.044	-767802.112697	4340958.934680	267-04-35	89-58-07	28.058
24-31	-149462.901	-21.669	-40831.662	-26.939	884781.283878	4026381.090039	176-56-23	89-51-48	20.267
24-39K	-149483.139	-18.817	-40830.580	29.044	768309.023860	-4341588.289116	87-05-27	90-09-04	27.998
合計				倍面積 面積	1136.265599 568.13	-1136.265599 568.13			96.597

面積 (座標法) 計算書

地番 = 24-8

測点名	[1] X (i)	[2] X (i+1)-X (i-1)	[3] Y (i)	[4] Y (i+1)-Y (i-1)	[2] * [3]	[1] * [4]	方向角	夾角	距離
24-27K	-149498.475	9.735	-40801.750	27.555	-397205.036250	-4119430.478625	357-05-17	90-06-44	8.268
24-26	-149490.218	6.778	-40802.170	-28.396	-276557.108260	4244924.230328	266-58-26	89-53-09	28.015
24-34	-149491.697	-9.735	-40830.146	-27.555	397481.471310	4119243.710835	177-04-51	90-06-25	8.267
24-35K	-149499.953	-6.778	-40829.725	28.396	276743.876050	-4245200.665388	86-58-33	89-53-42	28.014
合計				倍面積 面積	463.202850 231.60	-463.202850 231.60			72.564

面積 (座標法) 計算書

地番 = 24-9

測点名	[1] X (i)	[2] X (i+1)-X (i-1)	[3] Y (i)	[4] Y (i+1)-Y (i-1)	[2] * [3]	[1] * [4]	方向角	夾角	距離
24-35K	-149499.953	-23.049	-40829.725	-26.874	941084.331525	4017661.736922	177-04-41	90-06-08	21.599
24-28	-149521.524	-20.973	-40828.624	11.643	856298.731152	-1740879.103932	86-45-12	89-40-31	10.559
24-115	-149520.926	1.012	-40818.082	18.516	-41307.898984	-2768529.465816	87-01-41	180-16-29	7.985
24-114	-149520.512	0.732	-40810.108	14.441	-29872.999056	-2159225.713792	87-11-06	180-09-25	6.475
24-17	-149520.194	3.413	-40803.641	9.316	-139262.826733	-1392930.127304	42-37-48	135-26-42	4.207
24-16	-149517.099	6.794	-40800.792	2.650	-277200.580848	-396220.312350	356-55-14	134-17-26	3.704
24-113	-149513.400	18.624	-40800.991	-0.958	-759877.656384	143233.837200	357-05-20	180-10-06	14.944
24-27K	-149498.475	13.447	-40801.750	-28.734	-548661.132250	4295689.180650	266-58-33	89-53-13	28.014
合計				倍面積 面積	1199.968422 599.98	-1199.968422 599.98			97.487

面積 (座標法) 計算書

地番 = 24-10  
測点名

	[1] X (i)	[2] X (i+1) - X (i-1)	[3] Y (i)	[4] Y (i+1) - Y (i-1)	[2] * [3]	[1] * [4]	方向角	夾角	距離
24-40K	-149458.696	-5.636	-40831.877	-27.804	230128.458772	4155549.583584	177-04-23	89-59-48	4.210
24-31	-149462.901	-2.774	-40831.662	28.236	113267.030388	-4220234.472636	87-04-35	90-00-12	28.058
24-23	-149461.470	5.636	-40803.641	27.804	-229969.320676	-4155626.711880	357-02-45	89-58-10	4.211
24-41K	-149457.265	2.774	-40803.858	-28.236	-113189.902092	4220075.334540	267-04-35	90-01-50	28.056
合計				倍面積 面積	236.266392 118.13	-236.266392 118.13			64.535