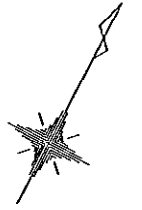
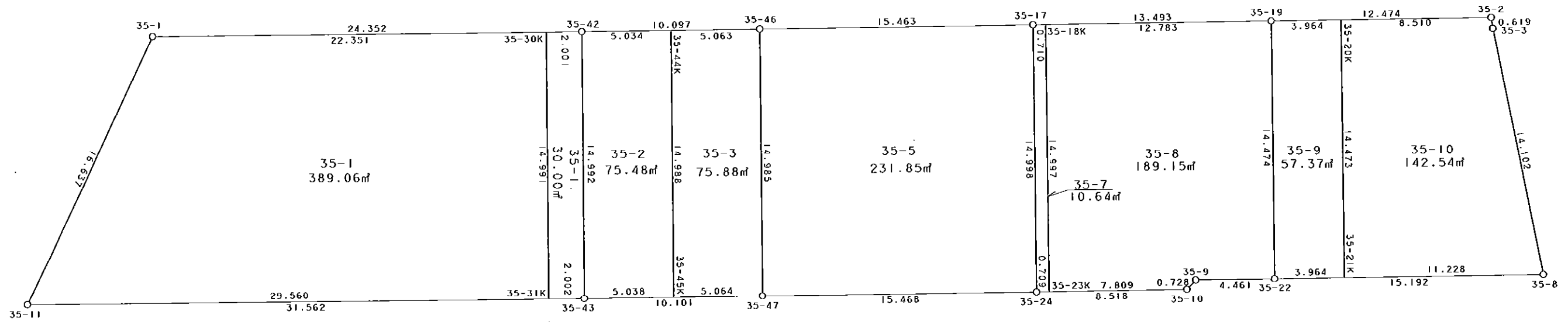


西部第4地区土地区画整理事業 出来形確認測量 (原子図)

35街区



S = 1 / 250



凡 例

記号	名称
⊙	地区界点
○	街区点
○	画地点 (折れ点)
┆	画地点 (直線中)

面積 (座標法) 計算書

地番 = 35街区

測点名	[1] X (i)	[2] X (i+1)-X (i-1)	[3] Y (i)	[4] Y (i+1)-Y (i-1)	[2]*[3]	[1]*[4]	方向角	夾角	距離
35-1	-149594.161	-28.292	-40704.509	-20.520	1151611.968628	3069672.183720	177-04-17	115-43-28	16.637
35-11	-149610.776	-1.484	-40703.659	28.549	60404.229956	-4271238.044024	61-21-14	64-16-57	31.562
35-43	-149595.645	19.981	-40675.960	36.560	-812746.356760	-5469216.781200	61-18-22	179-57-08	10.101
35-47	-149590.795	12.250	-40667.099	22.444	-498171.962750	-3357415.802980	61-25-07	180-06-45	15.468
35-24	-149583.395	11.497	-40653.516	21.051	-467393.473452	-3148880.048145	61-15-02	179-49-55	8.518
35-10	-149579.298	4.797	-40646.048	7.667	-194979.092256	-1146824.477766	15-52-11	134-37-09	0.728
35-9	-149578.598	2.834	-40645.849	4.117	-115190.336066	-615815.087966	61-25-28	225-33-17	4.461
35-22	-149576.464	9.421	-40641.931	17.248	-382887.631951	-2579894.851072	61-20-11	179-54-43	15.192
35-8	-149569.177	18.181	-40628.601	4.376	-738668.594781	-654514.718552	320-34-57	79-14-46	14.102
35-3	-149558.283	11.395	-40637.555	-9.318	-463064.939225	1393584.080994	323-59-59	183-25-02	0.619
35-2	-149557.782	-5.477	-40637.919	-11.312	222573.882363	1691797.629984	241-21-50	97-21-51	12.474
35-19	-149563.760	-12.451	-40648.867	-22.787	506119.043017	3408109.399120	241-19-56	179-58-06	13.493
35-17	-149570.233	-13.882	-40660.706	-25.412	564451.920692	3800878.760996	241-22-17	180-02-21	15.463
35-46	-149577.642	-12.251	-40674.279	-22.433	498300.592029	3355475.242986	241-20-36	179-58-19	10.097
35-42	-149582.484	-16.519	-40683.139	-30.230	672044.773141	4521878.491320	241-20-49	180-00-13	24.352
合計					2404.022585	-2404.022585			193.267
				倍面積	1202.01	1202.01			
				面積					

地番	筆種別	面積	坪数
35-1	筆界	389.06	117.69
35-2	筆界	75.48	22.83
35-3	筆界	75.88	22.95
35-5	筆界	231.85	70.13
35-7	筆界	10.64	3.22
35-8	筆界	189.15	57.21
35-9	筆界	57.37	17.35
35-10	筆界	142.54	43.11
35-11	筆界	30.00	9.07
	合計	1201.97	363.56

面積 (座標法) 計算書

地番 = 35-1

測点名	[1] X (i)	[2] X (i+1)-X (i-1)	[3] Y (i)	[4] Y (i+1)-Y (i-1)	[2] * [3]	[1] * [4]	方向角	夾 角	距 離
35-30K	-149583.444	2.444	-40684.895	-26.792	-99433.883380	4007639.631648	241-20-53	89-57-22	22.351
35-1	-149594.161	-27.332	-40704.509	-18.764	1112535.639988	2806984.837004	177-04-17	115-43-24	16.637
35-11	-149610.776	-2.444	-40703.659	26.792	99479.742596	-4008371.910592	61-21-15	64-16-58	29.560
35-31K	-149596.605	27.332	-40677.717	18.764	-1111803.361044	-2807030.696220	331-23-31	90-02-16	14.991
合計				倍面積 面積	778.138160 389.06	-778.138160 389.06			83.539

面積 (座標法) 計算書

地番 = 35-2

測点名	[1] X (i)	[2] X (i+1)-X (i-1)	[3] Y (i)	[4] Y (i+1)-Y (i-1)	[2] * [3]	[1] * [4]	方向角	夾 角	距 離
35-44K	-149580.070	10.742	-40678.722	-11.598	-436970.831724	1734829.651860	241-20-32	89-58-10	5.034
35-42	-149582.484	-15.575	-40683.139	2.762	633639.889925	-413146.820808	151-23-19	90-02-47	14.992
35-43	-149595.645	-10.742	-40675.960	11.598	436941.162320	-1735010.290710	61-18-12	89-54-53	5.038
35-45K	-149593.226	15.575	-40671.541	-2.762	-633459.251075	413176.490212	331-22-22	90-04-10	14.988
合計				倍面積 面積	150.969446 75.48	-150.969446 75.48			40.052

面積 (座標法) 計算書

地番 = 35-3

測点名	[1] X (i)	[2] X (i+1)-X (i-1)	[3] Y (i)	[4] Y (i+1)-Y (i-1)	[2] * [3]	[1] * [4]	方向角	夾 角	距 離
35-45K	-149593.226	-10.725	-40671.541	11.623	436202.277225	-1738722.065798	61-18-33	89-56-11	5.064
35-47	-149590.795	15.584	-40667.099	-2.738	-633756.070816	409579.596710	331-22-14	90-03-41	14.985
35-46	-149577.642	10.725	-40674.279	-11.623	-436231.642275	1738540.932966	241-20-40	89-58-26	5.063
35-44K	-149580.070	-15.584	-40678.722	2.738	633937.203648	-409550.231660	151-22-22	90-01-42	14.988
合計				倍面積 面積	151.767782 75.88	-151.767782 75.88			40.100

面積 (座標法) 計算書

地番 = 35-5

測点名	[1] X (i)	[2] X (i+1)-X (i-1)	[3] Y (i)	[4] Y (i+1)-Y (i-1)	[2] * [3]	[1] * [4]	方向角	夾 角	距 離
35-46	-149577.642	-20.562	-40674.279	-6.393	836344.524798	956249.865306	151-22-14	89-59-57	14.985
35-47	-149590.795	-5.753	-40667.099	20.763	233957.820547	-3105953.676585	61-25-07	90-02-53	15.468
35-24	-149583.395	20.562	-40653.516	6.393	-835917.595992	-956286.644235	331-21-13	89-56-06	14.998
35-17	-149570.233	5.753	-40660.706	-20.763	-233921.041618	3105526.747779	241-22-17	90-01-04	15.463
合計				倍面積 面積	463.707735 231.85	-463.707735 231.85			60.914

面積 (座標法) 計算書

地番 = 35-7

測点名	[1] X (i)	[2] X (i+1)-X (i-1)	[3] Y (i)	[4] Y (i+1)-Y (i-1)	[2]*[3]	[1]*[4]	方向角	夾角	距離
35-18K	-149569.892	12.821	-40660.083	-7.812	-521302.924143	1168439.996304	241-18-21	89-56-56	0.710
35-17	-149570.233	-13.503	-40660.706	6.567	549041.513118	-982227.720111	151-21-13	90-02-52	14.998
35-24	-149583.395	-12.821	-40653.516	7.812	521218.728636	-1168545.481740	61-16-01	89-54-48	0.709
35-23K	-149583.054	13.503	-40652.894	-6.567	-548936.027682	982311.915618	331-21-25	90-05-24	14.997
合計				倍面積 面積	21.289929 10.64	-21.289929 10.64			31.414

面積 (座標法) 計算書

地番 = 35-8

測点名	[1] X (i)	[2] X (i+1)-X (i-1)	[3] Y (i)	[4] Y (i+1)-Y (i-1)	[2]*[3]	[1]*[4]	方向角	夾角	距離
35-23K	-149583.054	-9.406	-40652.894	14.035	382381.120964	-2099398.162890	61-14-56	89-53-31	7.809
35-10	-149579.298	4.456	-40646.048	7.045	-181118.789888	-1053786.154410	15-52-11	134-37-15	0.728
35-9	-149578.598	2.834	-40645.849	4.117	-115190.336066	-615815.087966	61-25-28	225-33-17	4.461
35-22	-149576.464	14.838	-40641.931	-3.018	-603044.972178	451421.768352	331-22-00	89-56-32	14.474
35-19	-149563.760	6.572	-40648.867	-18.152	-267144.353924	2714881.371520	241-20-01	89-58-01	12.783
35-18K	-149569.892	-19.294	-40660.083	-4.027	784495.641402	602317.955084	151-21-25	90-01-24	14.997
合計				倍面積 面積	378.310310 189.15	-378.310310 189.15			55.252

面積 (座標法) 計算書

地番 = 35-9

測点名	[1] X (i)	[2] X (i+1)-X (i-1)	[3] Y (i)	[4] Y (i+1)-Y (i-1)	[2]*[3]	[1]*[4]	方向角	夾角	距離
35-20K	-149561.860	10.803	-40645.388	-10.414	-439092.126564	1557537.210040	241-21-34	89-59-28	3.964
35-19	-149563.760	-14.604	-40648.867	3.457	593636.053668	-517041.918320	151-22-00	90-00-26	14.474
35-22	-149576.464	-10.803	-40641.931	10.414	439054.780593	-1557689.296096	61-20-24	89-58-24	3.964
35-21K	-149574.563	14.604	-40638.453	-3.457	-593483.967612	517079.264291	331-22-06	90-01-42	14.473
合計				倍面積 面積	114.740085 57.37	-114.740085 57.37			36.875

面積 (座標法) 計算書

地番 = 35-10

測点名	[1] X (i)	[2] X (i+1)-X (i-1)	[3] Y (i)	[4] Y (i+1)-Y (i-1)	[2]*[3]	[1]*[4]	方向角	夾角	距離
35-21K	-149574.563	-7.317	-40638.453	16.787	297351.560601	-2510908.189081	61-20-06	89-58-00	11.228
35-8	-149569.177	16.280	-40628.601	0.898	-661433.624280	-134313.120946	320-34-57	79-14-51	14.102
35-3	-149558.283	11.395	-40637.555	-9.318	-463064.939225	1393584.080994	323-59-59	183-25-02	0.619
35-2	-149557.782	-3.577	-40637.919	-7.833	145361.836263	1171486.106406	241-21-57	97-21-58	8.510
35-20K	-149561.860	-16.781	-40645.388	-0.534	682070.256028	79866.033240	151-22-06	90-00-09	14.473
合計				倍面積 面積	285.089387 142.54	-285.089387 142.54			48.932

面積 (座標法) 計算書

地番 = 35-11
測点名

	[1] X (i)	[2] X (i+1) - X (i-1)	[3] Y (i)	[4] Y (i+1) - Y (i-1)	[2] * [3]	[1] * [4]	方向角	夾 角	距 離
35-31K	-149596.605	-12.201	-40677.717	8.935	496308.825117	-1336645.665675	61-20-54	89-57-23	2.002
35-43	-149595.645	14.121	-40675.960	-5.422	-574385.231160	811107.587190	331-23-19	90-02-25	14.992
35-42	-149582.484	12.201	-40683.139	-8.935	-496374.978939	1336519.494540	241-20-05	89-56-46	2.001
35-30K	-149583.444	-14.121	-40684.895	5.422	574511.402295	-811041.433368	151-23-31	90-03-26	14.991
合計				倍面積 面積	60.017313 30.00	-60.017313 30.00			33.986