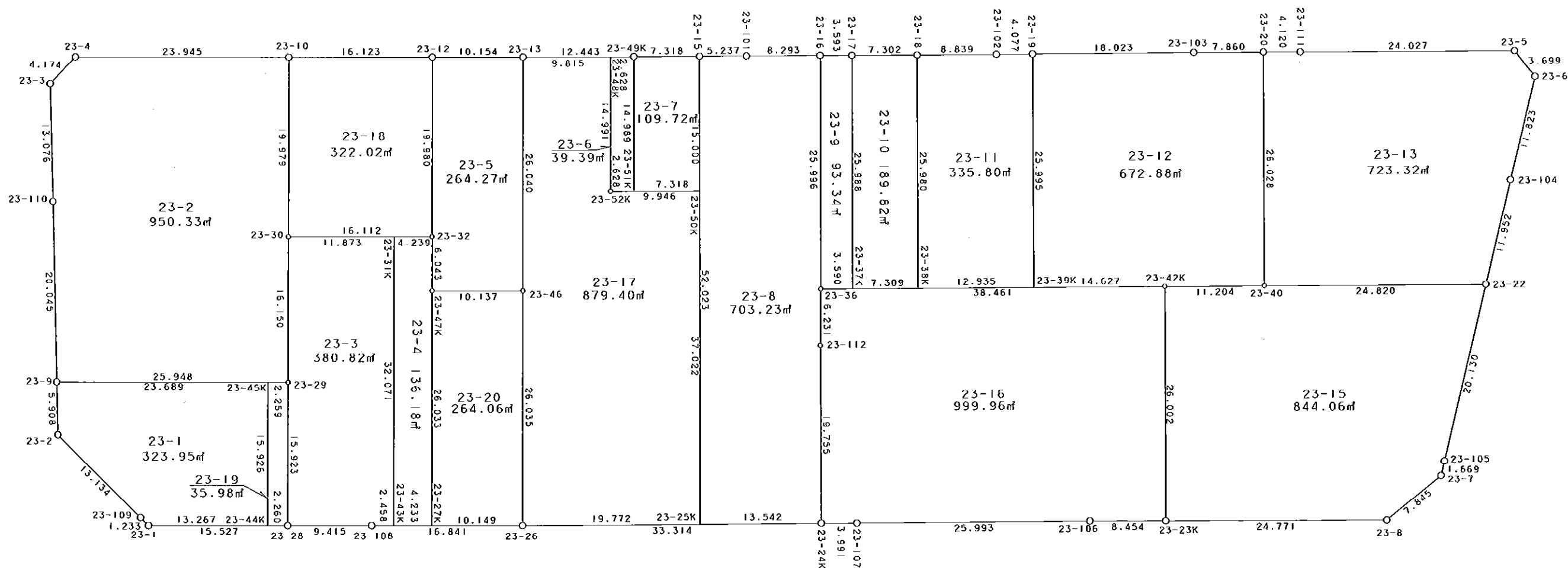


西部第4地区土地区画整理事業 出来形確認測量（原子図）

23街区



S = 1 / 500



凡 例

記号	名称
⊙	地区界点
○	街区点
○	画地点(折れ点)
└	画地点(直線中)

面積 (座標法) 計算書

地番 = 23街区

測点名	[1] X (i)	[2] X (i+1)-X (i-1)	[3] Y (i)	[4] Y (i+1)-Y (i-1)	[2] * [3]	[1] * [4]	方向角	夾角	距離
23-2	-149488.967	-13.469	-41013.047	-11.714	552404.730043	1751113.759438	207-39-48	135-46-02	13.134
23-109	-149500.600	-12.719	-41019.145	-6.682	521722.505255	998963.009200	208-16-09	180-36-21	1.233
23-1	-149501.686	-15.962	-41019.729	3.866	654756.914298	-577973.518076	163-20-46	135-04-37	15.527
23-28	-149516.562	-23.896	-41015.279	7.147	980101.106984	-1068594.868614	163-21-12	180-00-26	9.415
23-108	-149525.582	-25.162	-41012.582	7.497	1031958.588284	-1120993.288254	163-26-22	180-05-10	16.841
23-26	-149541.724	-48.037	-41007.782	14.420	1969890.823934	-2156391.660080	163-12-57	179-46-35	33.314
23-24K	-149573.619	-35.724	-40998.162	10.744	1464618.339288	-1607018.962536	163-38-26	180-25-29	3.991
23-107	-149577.448	-28.726	-40997.038	8.594	1177680.913588	-1285468.588112	163-17-56	179-39-30	25.993
23-106	-149602.345	-33.006	-40989.568	9.859	1352901.681408	-1474929.519355	163-35-04	180-17-08	8.454
23-23K	-149610.454	-31.867	-40987.179	9.402	1306138.433193	-1406637.488508	163-33-15	179-58-11	24.771
23-8	-149634.212	-28.208	-40980.166	13.474	1155968.522528	-2016171.372488	124-33-25	141-00-10	7.845
23-7	-149638.662	-4.350	-40973.705	8.127	178235.616750	-1216113.406074	86-33-54	142-00-29	1.669
23-105	-149638.562	1.124	-40972.039	21.770	-46052.571836	-3257631.494740	87-05-03	180-31-09	20.130
23-22	-149637.538	1.642	-40951.935	32.040	-67243.077270	-4794386.717520	87-02-10	179-57-07	11.952
23-104	-149636.920	1.207	-40939.999	23.744	-49414.578793	-3552979.028480	87-08-40	180-06-30	11.823
23-6	-149636.331	3.618	-40928.191	13.931	-148078.195038	-2084583.727161	35-01-35	127-52-55	3.699
23-5	-149633.302	26.054	-40926.068	-4.742	-1066287.775672	709561.118084	343-23-52	128-22-17	24.027
23-111	-149610.277	26.977	-40932.933	-8.031	-1104247.733541	1201520.134587	343-33-43	180-09-51	4.120
23-20	-149606.325	11.484	-40934.099	-3.413	-470087.192916	510606.387225	343-23-19	179-49-36	7.860
23-103	-149598.793	24.788	-40936.346	-7.449	-1014730.144648	1114361.409057	343-13-26	179-50-07	18.023
23-19	-149581.537	21.157	-40941.548	-6.386	-866200.331036	955227.695282	343-06-59	179-53-33	4.077
23-102	-149577.636	12.371	-40942.732	-3.710	-506502.537572	554933.029560	343-23-38	180-16-39	8.839
23-18	-149569.166	15.469	-40945.258	-4.609	-633382.196002	689364.286094	343-25-35	180-01-57	7.302
23-17	-149562.167	10.444	-40947.341	-3.103	-427654.029404	464091.404201	343-30-25	180-04-50	3.593
23-16	-149558.722	11.395	-40948.361	-3.382	-466606.573595	505807.597804	343-27-11	179-56-46	8.293
23-101	-149550.772	12.966	-40950.723	-3.867	-530967.074418	578312.835324	343-17-55	179-50-44	5.237
23-15	-149545.756	12.024	-40952.228	-3.611	-492409.589472	540009.724916	343-16-26	179-58-31	7.318
23-49K	-149538.748	18.934	-40954.334	-5.657	-775429.359956	845940.697436	343-25-08	180-08-42	12.443
23-13	-149526.822	21.653	-40957.885	-6.463	-886861.083905	966391.850586	343-20-01	179-54-53	10.154
23-12	-149517.095	25.176	-40960.797	-7.525	-1031229.025272	1125116.139875	343-22-29	180-02-28	16.123
23-10	-149501.646	38.395	-40965.410	-11.459	-1572866.916950	1713139.361514	343-23-15	180-00-46	23.945
23-4	-149478.700	24.859	-40972.256	-10.556	-1018529.311904	1577897.157200	297-16-38	133-53-23	4.174
23-3	-149476.787	-2.184	-40975.966	-16.128	89491.509744	2410761.620736	251-44-28	134-27-50	13.076
23-110	-149480.884	-10.344	-40988.384	-31.465	423983.844096	4703416.015060	251-50-30	180-06-02	20.045
23-9	-149487.131	-8.083	-41007.431	-24.663	331463.064773	3686801.111853	251-53-46	180-03-16	5.908
合計				倍面積 面積	16537.294966 8268.64	-16537.294966 8268.64			414.348

地番	筆種別	面積	坪数
23-1	筆界	323.95	97.99
23-2	筆界	950.33	287.47
23-3	筆界	380.82	115.20
23-4	筆界	136.18	41.19
23-5	筆界	264.27	79.94
23-6	筆界	39.39	11.91
23-7	筆界	109.72	33.19
23-8	筆界	703.23	212.72
23-9	筆界	93.34	28.23
23-10	筆界	189.82	57.42
23-11	筆界	335.80	101.58
23-12	筆界	672.88	203.54
23-13	筆界	723.32	218.80
23-15	筆界	844.06	255.33
23-16	筆界	999.96	302.48
23-17	筆界	879.40	266.02
23-18	筆界	322.02	97.41
23-19	筆界	35.98	10.88
23-20	筆合	264.06	79.87
		8268.53	2501.17

面積 (座標法) 計算書

地番 = 23-1

測点名	[1] X (i)	[2] X (i+1)-X (i-1)	[3] Y (i)	[4] Y (i+1)-Y (i-1)	[2]*[3]	[1]*[4]	方向角	夾角	距離
23-45K	-149509.834	27.266	-41000.669	8.496	-1117924.240954	-1270235.549664	343-24-51	90-03-50	23.689
23-9	-149487.131	20.867	-41007.431	-12.378	-855702.062677	1850351.707518	251-53-46	88-28-55	5.908
23-2	-149488.967	-13.469	-41013.047	-11.714	552404.730043	1751113.759438	207-39-48	135-46-02	13.134
23-109	-149500.600	-12.719	-41019.145	-6.682	521722.505255	998963.009200	208-16-09	180-36-21	1.233
23-1	-149501.686	-13.797	-41019.729	3.218	565949.201013	-481096.425548	163-20-51	135-04-42	13.267
23-44K	-149514.397	-8.148	-41015.927	19.060	334197.773196	-2849744.406820	73-21-01	90-00-10	15.926
合計				倍面積 面積	647.905876 323.95	-647.905876 323.95			73.157

面積 (座標法) 計算書

地番 = 23-2

測点名	[1] X (i)	[2] X (i+1)-X (i-1)	[3] Y (i)	[4] Y (i+1)-Y (i-1)	[2]*[3]	[1]*[4]	方向角	夾角	距離
23-9	-149487.131	-31.115	-41007.431	-11.640	1275946.215565	1740030.204840	163-24-49	91-34-19	25.948
23-29	-149511.999	-20.247	-41000.024	22.882	830127.485928	-3421133.561118	73-22-26	89-57-37	16.150
23-30	-149507.378	10.353	-40984.549	34.614	-424313.035797	-5175048.382092	73-19-39	179-57-13	19.979
23-10	-149501.646	28.678	-40965.410	12.293	-1174806.027980	-1837823.734278	343-23-15	90-03-36	23.945
23-4	-149478.700	24.859	-40972.256	-10.556	-1018529.311904	1577897.157200	297-16-38	133-53-23	4.174
23-3	-149476.787	-2.184	-40975.966	-16.128	89491.509744	2410761.620736	251-44-28	134-27-50	13.076
23-110	-149480.884	-10.344	-40988.384	-31.465	423983.844096	4703416.015060	251-50-30	180-06-02	20.045
合計				倍面積 面積	1900.679652 950.33	-1900.679652 950.33			123.317

面積 (座標法) 計算書

地番 = 23-3

測点名	[1] X (i)	[2] X (i+1)-X (i-1)	[3] Y (i)	[4] Y (i+1)-Y (i-1)	[2]*[3]	[1]*[4]	方向角	夾角	距離
23-31K	-149518.755	20.560	-40981.153	27.332	-842572.505680	-4086646.611660	343-22-47	90-01-06	11.873
23-30	-149507.378	6.756	-40984.549	-18.871	-276891.613044	2821353.730238	253-22-26	89-59-39	16.150
23-29	-149511.999	-9.184	-41000.024	-30.730	376544.220416	4594503.729270	253-20-50	179-58-24	15.923
23-28	-149516.562	-13.583	-41015.279	-12.558	557110.534657	1877628.985596	163-21-12	90-00-22	9.415
23-108	-149525.582	-11.376	-41012.582	3.398	466559.132832	-508087.927636	163-25-49	180-04-37	2.458
23-43K	-149527.938	6.827	-41011.881	31.429	-279988.111587	-4699513.563402	73-21-41	89-55-52	32.071
合計				倍面積 面積	761.657594 380.82	-761.657594 380.82			87.890

面積 (座標法) 計算書

地番 = 23-4

測点名	[1] X (i)	[2] X (i+1)-X (i-1)	[3] Y (i)	[4] Y (i+1)-Y (i-1)	[2] * [3]	[1] * [4]	方向角	夾角	距離
23-43K	-149527.938	-13.241	-41011.881	-29.522	543038.316321	4414363.785636	163-26-55	90-05-14	4.233
23-27K	-149531.996	3.373	-41010.675	26.156	-138329.006775	-3911158.887376	73-24-53	89-57-58	26.033
23-47K	-149524.565	9.179	-40985.725	30.735	-376207.969775	-4595637.505275	73-11-14	179-46-21	6.043
23-32	-149522.817	5.810	-40979.940	4.572	-238093.451400	-683618.319324	343-22-24	90-11-10	4.239
23-31K	-149518.755	-5.121	-40981.153	-31.941	209864.484513	4775778.553455	253-21-41	89-59-17	32.071
合計				倍面積 面積	272.372884 136.18	-272.372884 136.18			72.619

面積 (座標法) 計算書

地番 = 23-5

測点名	[1] X (i)	[2] X (i+1)-X (i-1)	[3] Y (i)	[4] Y (i+1)-Y (i-1)	[2] * [3]	[1] * [4]	方向角	夾角	距離
23-47K	-149524.565	-11.464	-40985.725	-2.894	469860.351400	432724.091110	163-25-47	90-14-33	10.137
23-46	-149534.281	-2.257	-40982.834	27.840	92498.256338	-4163034.383040	73-21-18	89-55-31	26.040
23-13	-149526.822	17.186	-40957.885	22.037	-703902.211610	-3295122.576414	343-20-01	89-58-43	10.154
23-12	-149517.095	4.005	-40960.797	-22.055	-164047.991985	3297599.530225	253-21-29	90-01-28	19.980
23-32	-149522.817	-7.470	-40979.940	-24.928	306120.151800	3727304.782176	253-11-14	179-49-45	6.043
合計				倍面積 面積	528.555943 264.27	-528.555943 264.27			72.354

面積 (座標法) 計算書

地番 = 23-6

測点名	[1] X (i)	[2] X (i+1)-X (i-1)	[3] Y (i)	[4] Y (i+1)-Y (i-1)	[2] * [3]	[1] * [4]	方向角	夾角	距離
23-52K	-149540.522	-6.811	-40969.447	-13.611	279042.903517	2035396.044942	163-22-18	90-00-46	2.628
23-51K	-149543.040	1.774	-40968.695	15.113	-72678.464930	-2260043.963520	73-21-38	89-59-20	14.989
23-49K	-149538.748	6.811	-40954.334	13.611	-278939.968874	-2035371.899028	343-25-11	90-03-33	2.628
23-48K	-149536.229	-1.774	-40955.084	-15.113	72654.319016	2259941.028877	253-21-32	89-56-21	14.991
合計				倍面積 面積	78.788729 39.39	-78.788729 39.39			35.236

面積 (座標法) 計算書

地番 = 23-7

測点名	[1] X (i)	[2] X (i+1)-X (i-1)	[3] Y (i)	[4] Y (i+1)-Y (i-1)	[2] * [3]	[1] * [4]	方向角	夾角	距離
23-51K	-149543.040	-11.304	-40968.695	-12.266	463110.128280	1834294.928640	163-21-55	90-00-17	7.318
23-50K	-149550.052	-2.716	-40966.600	16.467	111265.285600	-2462640.706284	73-21-28	89-59-33	15.000
23-15	-149545.756	11.304	-40952.228	12.266	-462923.985312	-1834328.243096	343-16-26	89-54-58	7.318
23-49K	-149538.748	2.716	-40954.334	-16.467	-111231.971144	2462454.563316	253-21-38	90-05-12	14.989
合計				倍面積 面積	219.457424 109.72	-219.457424 109.72			44.625

面積 (座標法) 計算書

地番 = 23-8
測点名

	[1] X (i)	[2] X (i+1)-X (i-1)	[3] Y (i)	[4] Y (i+1)-Y (i-1)	[2] * [3]	[1] * [4]	方向角	夾角	距離
23-25K	-149560.654	-27.863	-41002.072	-45.934	1142440.732136	6869919.080836	163-13-04	89-51-32	13.542
23-24K	-149573.619	-7.249	-40998.162	22.820	297195.676338	-3413269.985580	73-10-53	89-57-49	19.755
23-112	-149567.903	7.446	-40979.252	24.896	-305131.510392	-3723642.513088	73-52-49	180-41-56	6.231
23-36	-149566.173	9.181	-40973.266	30.891	-376175.555146	-4620248.650143	73-20-39	179-27-50	25.996
23-16	-149558.722	15.401	-40948.361	22.543	-630645.707761	-3371502.270046	343-27-11	90-06-32	8.293
23-101	-149550.772	12.966	-40950.723	-3.867	-530967.074418	578312.835324	343-17-55	179-50-44	5.237
23-15	-149545.756	-9.882	-40952.228	-51.349	404689.917096	7679025.024844	253-21-32	90-03-37	52.023
合計					1406.477853	-1406.477853			131.077
				倍面積 面積	703.23	703.23			

面積 (座標法) 計算書

地番 = 23-9
測点名

	[1] X (i)	[2] X (i+1)-X (i-1)	[3] Y (i)	[4] Y (i+1)-Y (i-1)	[2] * [3]	[1] * [4]	方向角	夾角	距離
23-17	-149562.167	10.891	-40947.341	23.878	-445957.490831	-3571245.423626	343-30-25	90-09-24	3.593
23-16	-149558.722	-4.006	-40948.361	-25.925	164039.134166	3877309.867850	253-20-39	89-50-14	25.996
23-36	-149566.173	-10.891	-40973.266	-23.878	446239.840006	3571341.078894	163-22-38	90-01-59	3.590
23-37K	-149569.613	4.006	-40972.239	25.925	-164134.789434	-3877592.217025	73-21-01	89-58-23	25.988
合計					186.693907	-186.693907			59.167
				倍面積 面積	93.34	93.34			

面積 (座標法) 計算書

地番 = 23-10
測点名

	[1] X (i)	[2] X (i+1)-X (i-1)	[3] Y (i)	[4] Y (i+1)-Y (i-1)	[2] * [3]	[1] * [4]	方向角	夾角	距離
23-18	-149569.166	14.449	-40945.258	22.806	-591618.032842	-3411074.399796	343-25-35	90-05-25	7.302
23-17	-149562.167	-0.447	-40947.341	-26.981	18303.461427	4035336.827827	253-21-01	89-55-26	25.988
23-37K	-149569.613	-14.449	-40972.239	-22.806	592007.881311	3411084.594078	163-22-03	90-01-02	7.309
23-38K	-149576.616	0.447	-40970.147	26.981	-18313.655709	-4035726.676296	73-20-10	89-58-07	25.980
合計					379.654187	-379.654187			66.579
				倍面積 面積	189.82	189.82			

面積 (座標法) 計算書

地番 = 23-11
測点名

	[1] X (i)	[2] X (i+1)-X (i-1)	[3] Y (i)	[4] Y (i+1)-Y (i-1)	[2] * [3]	[1] * [4]	方向角	夾角	距離
23-18	-149569.166	1.020	-40945.258	-27.415	-41764.163160	4100438.685890	253-20-10	89-56-32	25.980
23-38K	-149576.616	-19.844	-40970.147	-21.188	813011.597068	3169229.339808	163-22-25	90-02-15	12.935
23-39K	-149589.010	-4.921	-40966.446	28.599	201595.880766	-4278096.096990	73-17-35	89-55-10	25.995
23-19	-149581.537	11.374	-40941.548	23.714	-465669.166952	-3547176.568418	343-06-59	89-49-24	4.077
23-102	-149577.636	12.371	-40942.732	-3.710	-506502.537572	554933.029560	343-23-38	180-16-39	8.839
合計					671.610150	-671.610150			77.826
				倍面積 面積	335.80	335.80			

面積 (座標法) 計算書

地番 = 23-12
測点名

	[1] X (i)	[2] X (i+1)-X (i-1)	[3] Y (i)	[4] Y (i+1)-Y (i-1)	[2] * [3]	[1] * [4]	方向角	夾角	距離
23-39K	-149589.010	-21.489	-40966.446	-20.713	880327.958094	3098437.164130	163-22-30	90-04-55	14.627
23-42K	-149603.026	-24.748	-40962.261	7.403	1013734.035228	-1107511.201478	163-18-31	179-56-01	11.204
23-40	-149613.758	-3.299	-40959.043	28.162	135123.882857	-4213422.652796	73-24-24	90-05-53	26.028
23-20	-149606.325	14.965	-40934.099	22.697	-612578.791535	-3395614.758525	343-23-19	89-58-55	7.860
23-103	-149598.793	24.788	-40936.346	-7.449	-1014730.144648	1114361.409057	343-13-26	179-50-07	18.023
23-19	-149581.537	9.783	-40941.548	-30.100	-400531.164084	4502404.263700	253-17-35	90-04-09	25.995
合計				倍面積 面積	1345.775912 672.88	-1345.775912 672.88			103.737

面積 (座標法) 計算書

地番 = 23-13
測点名

	[1] X (i)	[2] X (i+1)-X (i-1)	[3] Y (i)	[4] Y (i+1)-Y (i-1)	[2] * [3]	[1] * [4]	方向角	夾角	距離
23-40	-149613.758	-31.213	-40959.043	-17.836	1278454.609159	2668510.987688	163-21-30	89-57-06	24.820
23-22	-149637.538	-23.162	-40951.935	19.044	948528.718470	-2849697.273672	87-02-10	103-40-40	11.952
23-104	-149636.920	1.207	-40939.999	23.744	-49414.578793	-3552979.028480	87-08-40	180-06-30	11.823
23-6	-149636.331	3.618	-40928.191	13.931	-148078.195038	-2084583.727161	35-01-35	127-52-55	3.699
23-5	-149633.302	26.054	-40926.068	-4.742	-1066287.775672	709561.118084	343-23-52	128-22-17	24.027
23-111	-149610.277	26.977	-40932.933	-8.031	-1104247.733541	1201520.134587	343-33-43	180-09-51	4.120
23-20	-149606.325	-3.481	-40934.099	-26.110	142491.598619	3906221.145750	253-24-24	89-50-41	26.028
合計				倍面積 面積	1446.643204 723.32	-1446.643204 723.32			106.469

面積 (座標法) 計算書

地番 = 23-15
測点名

	[1] X (i)	[2] X (i+1)-X (i-1)	[3] Y (i)	[4] Y (i+1)-Y (i-1)	[2] * [3]	[1] * [4]	方向角	夾角	距離
23-23K	-149610.454	-31.186	-40987.179	-17.905	1278226.164294	2678775.178870	163-33-15	90-09-12	24.771
23-8	-149634.212	-28.208	-40980.166	13.474	1155968.522528	-2016171.372488	124-33-25	141-00-10	7.845
23-7	-149638.662	-4.350	-40973.705	8.127	178235.616750	-1216113.406074	86-33-54	142-00-29	1.669
23-105	-149638.562	1.124	-40972.039	21.770	-46052.571836	-3257631.494740	87-05-03	180-31-09	20.130
23-22	-149637.538	24.804	-40951.935	12.996	-1015771.795740	-1944689.443848	343-21-30	76-16-27	24.820
23-40	-149613.758	34.512	-40959.043	-10.326	-1413578.492016	1544911.665108	343-18-31	179-57-01	11.204
23-42K	-149603.026	3.304	-40962.261	-28.136	-135339.310344	4209230.739536	253-24-03	90-05-32	26.002
合計				倍面積 面積	1688.133636 844.06	-1688.133636 844.06			116.441

面積 (座標法) 計算書

地番 = 23-16
測点名

	[1] X (i)	[2] X (i+1)-X (i-1)	[3] Y (i)	[4] Y (i+1)-Y (i-1)	[2] * [3]	[1] * [4]	方向角	夾角	距離
23-24K	-149573.619	-9.545	-40998.162	-17.786	391327.456290	2660316.387534	163-38-26	90-27-33	3.991
23-107	-149577.448	-28.726	-40997.038	8.594	1177680.913588	-1285468.588112	163-17-56	179-39-30	25.993
23-106	-149602.345	-33.006	-40989.568	9.859	1352901.681408	-1474929.519355	163-35-04	180-17-08	8.454
23-23K	-149610.454	-0.681	-40987.179	27.307	27912.268899	-4085412.667378	73-24-03	89-48-59	26.002
23-42K	-149603.026	44.281	-40962.261	13.913	-1813849.879341	-2081426.900738	343-22-24	89-58-21	38.461
23-36	-149566.173	35.123	-40973.266	-16.991	-1439104.021718	2541278.845443	253-52-49	90-30-25	6.231
23-112	-149567.903	-7.446	-40979.252	-24.896	305131.510392	3723642.513088	253-10-53	179-18-04	19.755
合計					1999.929518	-1999.929518			128.887
				倍面積 面積	999.96	999.96			

面積 (座標法) 計算書

地番 = 23-17
測点名

	[1] X (i)	[2] X (i+1)-X (i-1)	[3] Y (i)	[4] Y (i+1)-Y (i-1)	[2] * [3]	[1] * [4]	方向角	夾角	距離
23-13	-149526.822	1.948	-40957.885	-27.750	-79785.959980	4149369.310500	253-21-18	89-56-11	26.040
23-46	-149534.281	-14.902	-40982.834	-49.897	610726.192268	7461312.019057	253-23-17	180-01-59	26.035
23-26	-149541.724	-26.373	-41007.782	-19.238	1081498.234686	2876883.686312	163-12-53	89-49-36	19.772
23-25K	-149560.654	-8.328	-41002.072	41.182	341465.255616	-6159206.853028	73-21-34	90-08-41	37.022
23-50K	-149550.052	20.132	-40966.600	32.625	-824739.591200	-4879070.446500	343-22-01	90-00-27	9.946
23-52K	-149540.522	13.823	-40969.447	11.516	-566320.665881	-1722108.651352	73-21-32	269-59-31	14.991
23-48K	-149536.229	13.700	-40955.084	11.562	-561084.650800	-1728937.879698	343-25-07	90-03-35	9.815
合計					1758.814709	-1758.814709			143.621
				倍面積 面積	879.40	879.40			

面積 (座標法) 計算書

地番 = 23-18
測点名

	[1] X (i)	[2] X (i+1)-X (i-1)	[3] Y (i)	[4] Y (i+1)-Y (i-1)	[2] * [3]	[1] * [4]	方向角	夾角	距離
23-30	-149507.378	-21.171	-40984.549	-14.530	867683.886879	2172342.202340	163-22-41	90-03-02	16.112
23-32	-149522.817	-9.717	-40979.940	23.752	398202.076980	-3551465.949384	73-21-29	89-58-48	19.980
23-12	-149517.095	21.171	-40960.797	14.530	-867181.033287	-2172483.390350	343-22-29	90-01-00	16.123
23-10	-149501.646	9.717	-40965.410	-23.752	-398060.888970	3550963.095792	253-19-39	89-57-10	19.979
合計					644.041602	-644.041602			72.194
				倍面積 面積	322.02	322.02			

面積 (座標法) 計算書

地番 = 23-19
測点名

	[1] X (i)	[2] X (i+1)-X (i-1)	[3] Y (i)	[4] Y (i+1)-Y (i-1)	[2] * [3]	[1] * [4]	方向角	夾角	距離
23-44K	-149514.397	-6.728	-41015.927	-14.610	275955.156856	2184405.340170	163-20-14	89-59-13	2.260
23-28	-149516.562	2.398	-41015.279	15.903	-98354.639042	-2377761.885486	73-20-50	90-00-36	15.923
23-29	-149511.999	6.728	-41000.024	14.610	-275848.161472	-2184370.305390	343-24-36	90-03-46	2.259
23-45K	-149509.834	-2.398	-41000.669	-15.903	98319.604262	2377654.890102	253-21-01	89-56-25	15.926
合計					71.960604	-71.960604			36.368
				倍面積 面積	35.98	35.98			

面積 (座標法) 計算書

地番 = 23-20
測点名

	[1] X (i)	[2] X (i+1) - X (i-1)	[3] Y (i)	[4] Y (i+1) - Y (i-1)	[2] * [3]	[1] * [4]	方向角	夾 角	距 離
23-47K	-149524.565	2.285	-40985.725	-27.841	-93652.381625	4162913.414165	253-24-53	89-59-06	26.033
23-27K	-149531.996	-17.159	-41010.675	-22.057	703702.172325	3298227.235772	163-26-17	90-01-24	10.149
23-26	-149541.724	-2.285	-41007.782	27.841	93702.781870	-4163391.137884	73-23-17	89-57-00	26.035
23-46	-149534.281	17.159	-40982.834	22.057	-703224.448606	-3298277.636017	343-25-47	90-02-30	10.137
合計				倍面積 面積	528.123964 264.06	-528.123964 264.06			72.354