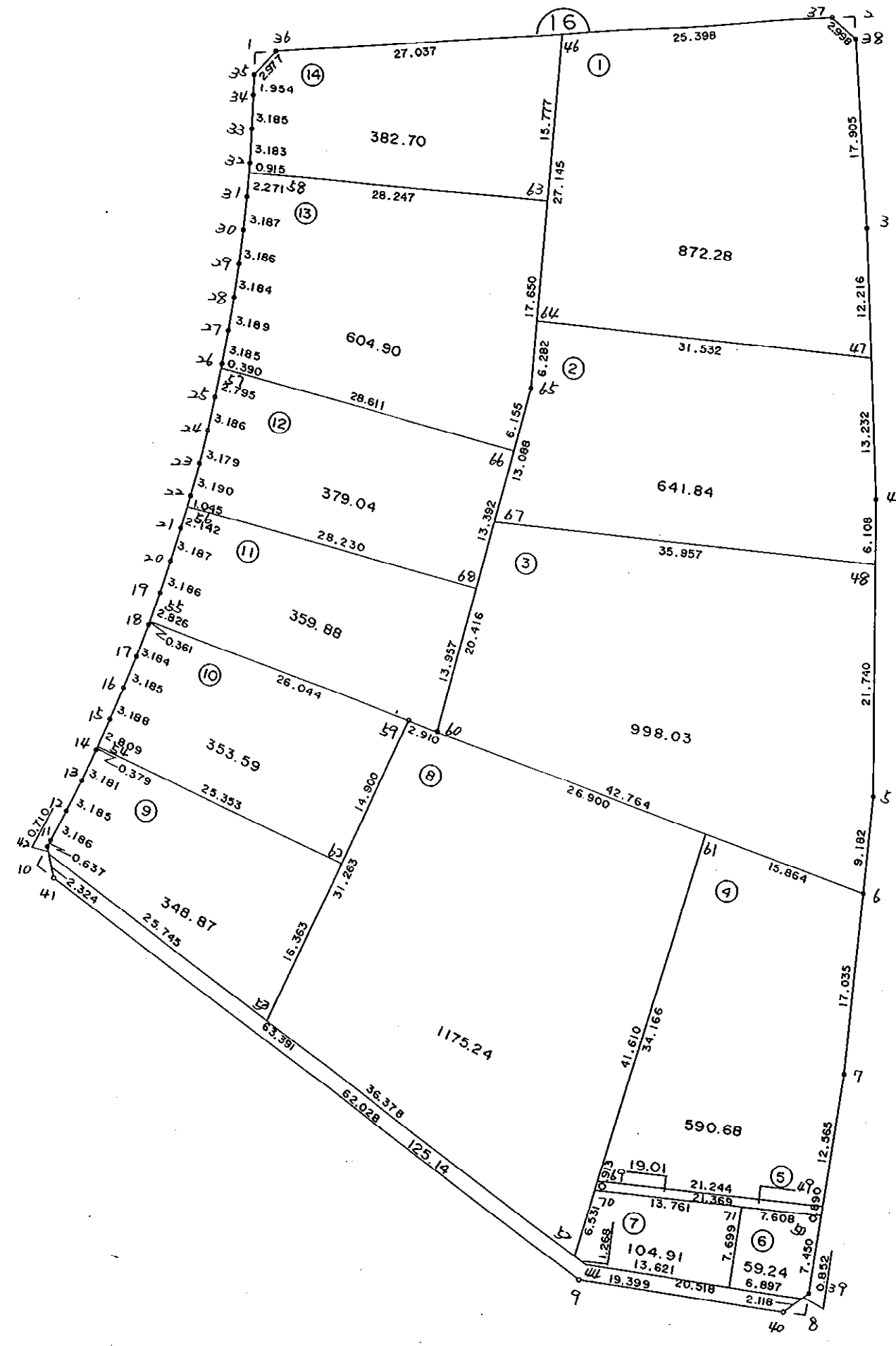


1 6 B L O C K

[



\* \* \* 各筆面積 集計表 \* \* \*

街区名・筆名	各筆面積	隅切面積
16 BLOCK	7015.46	
1 LOT	872.28	
2 LOT	641.84	
3 LOT	998.03	
4 LOT	590.68	
5 LOT	19.01	
6 LOT	59.24	
7 LOT	104.91	
8 LOT	1175.24	
9 LOT	348.87	
10 LOT	353.59	
11 LOT	359.88	
12 LOT	379.04	
13 LOT	604.90	
14 LOT	382.70	
スロ	125.14	
1 スミキリ		1.98
2 スミキリ		2.27
8 スミキリ		2.18
10 スミキリ		1.97
合計 =	7015.35	8.40

\* \* \* \* \* 各 筆 面 積 計 算 書 \* \* \* \* \*

16 BLOCK

点 名	X	Y	(X-X0)*(YN-1-Y0)	(XN-1-X0)*(Y-Y0)
X0·Y0	- 150800.000	- 38500.000		
16-35	- 150898.883	- 38602.873		
16-36	- 150898.091	- 38600.003	+ 10090.915443	+ 9888.596649
16-37	- 150922.318	- 38553.500	+ 12232.166954	+ 5247.868500
16-38	- 150925.184	- 38552.621	+ 6697.344000	+ 6436.495478
16-3	- 150940.963	- 38561.083	+ 7417.614023	+ 7646.614272
16-4	- 150963.107	- 38573.622	+ 9963.064881	+ 10377.977986
16-5	- 150986.741	- 38588.352	+ 13748.245902	+ 14410.829664
16-6	- 150994.060	- 38593.896	+ 17145.589120	+ 17534.232936
16-7	- 151007.569	- 38604.273	+ 19489.898824	+ 20235.218380
16-39	- 151023.414	- 38617.908	+ 23296.048022	+ 24474.045652
16-40	- 151023.664	- 38620.867	+ 26371.774912	+ 27003.379938
16-9	- 151011.167	- 38635.704	+ 25523.121789	+ 30352.099456
16-41	- 150953.448	- 38658.420	+ 20823.507392	+ 33453.076140
16-42	- 150950.597	- 38657.383	+ 23857.576740	+ 24150.106584
16-11	- 150950.276	- 38656.833	+ 23650.887708	+ 23618.579301
16-12	- 150948.667	- 38654.083	+ 23315.891611	+ 23154.976908
16-13	- 150947.015	- 38651.360	+ 22652.512245	+ 22502.237120
16-14	- 150945.256	- 38648.709	+ 21985.948160	+ 21862.453635
16-15	- 150943.453	- 38646.080	+ 21332.752177	+ 21218.996480
16-16	- 150941.612	- 38643.477	+ 20686.680960	+ 20582.206081
16-17	- 150939.729	- 38640.908	+ 20047.897733	+ 19954.263696
16-18	- 150937.803	- 38638.373	+ 19417.545124	+ 19334.720917
16-19	- 150935.818	- 38635.880	+ 18793.544114	+ 18724.671640
16-20	- 150933.770	- 38633.440	+ 18176.667600	+ 18123.553920
16-21	- 150931.690	- 38631.025	+ 17572.713600	+ 17527.214250
16-22	- 150929.571	- 38628.645	+ 16977.040275	+ 16941.260050
16-23	- 150927.397	- 38626.310	+ 16388.987065	+ 16366.113010
16-24	- 150925.160	- 38624.051	+ 15808.959600	+ 15803.725247
16-25	- 150922.860	- 38621.846	+ 15240.905860	+ 15250.245360
16-26	- 150920.543	- 38619.661	+ 14687.682378	+ 14701.550460
16-27	- 150918.187	- 38617.518	+ 14142.374607	+ 14165.972274
16-28	- 150915.771	- 38615.437	+ 13605.176378	+ 13643.152719
16-29	- 150913.327	- 38613.397	+ 13082.128899	+ 13128.084087
16-30	- 150910.841	- 38611.405	+ 12569.036877	+ 12625.194435
16-31	- 150908.317	- 38609.459	+ 12067.055385	+ 12132.545019
16-32	- 150905.756	- 38607.564	+ 11575.946004	+ 11651.009788
16-33	- 150903.145	- 38605.743	+ 11094.688780	+ 11182.956708
16-34	- 150900.509	- 38603.956	+ 10628.123187	+ 10722.541620
16-35	- 150898.883	- 38602.873	+ 10279.481148	+ 10339.662357

	+632437.495477	+646468.428717
倍面積	= 14030.933240	
面積	= 7015.466620	

\* \* \* \* \* 各 筆 面 積 計 算 書 \* \* \* \* \*

1 LOT

点 名	X	Y	(X-X0)*(YN-1-Y0)	(XN-1-X0)*(Y-Y0)
X0·Y0	- 150900.000	- 38500.000		
16-46	- 150910.583	- 38576.025		
16-37	- 150922.318	- 38553.500	+ 1696.725950	+ 566.190500
16-38	- 150925.184	- 38552.621	+ 1347.344000	+ 1174.395478
16-3	- 150940.963	- 38561.083	+ 2155.514023	+ 1538.314272
16-47	- 150951.593	- 38567.102	+ 3151.455219	+ 2748.699226
16-64	- 150932.427	- 38592.140	+ 2175.916554	+ 4753.779020
16-46	- 150910.583	- 38576.025	+ 975.117620	+ 2465.262675
			+ 11502.073366	+ 13246.641171
		倍面積	= 1744.567805	
		面積	= 872.283902	

2 LOT

点 名	X	Y	(X-X0)*(YN-1-Y0)	(XN-1-X0)*(Y-Y0)
X0·Y0	- 150900.000	- 38500.000		
16-47	- 150951.593	- 38567.102		
16-4	- 150963.107	- 38573.622	+ 4234.605914	+ 3798.379846
16-48	- 150968.291	- 38576.853	+ 5027.720002	+ 4849.962271
16-67	- 150946.441	- 38605.410	+ 3569.130173	+ 7198.554310
16-65	- 150937.482	- 38595.869	+ 3950.977620	+ 4452.252229
16-64	- 150932.427	- 38592.140	+ 3108.744063	+ 3453.591480
16-47	- 150951.593	- 38567.102	+ 4753.779020	+ 2175.916554
			+ 24644.956792	+ 25928.656690
		倍面積	= 1283.699898	
		面積	= 641.849949	

3 LOT

点 名	X	Y	(X-X0)*(YN-1-Y0)	(XN-1-X0)*(Y-Y0)
X0·Y0	- 150900.000	- 38500.000		
16-48	- 150968.291	- 38576.853		
16-5	- 150986.741	- 38588.352	+ 6666.306073	+ 6033.646432
16-6	- 150994.060	- 38593.896	+ 8310.389120	+ 8144.632936
16-60	- 150960.416	- 38620.294	+ 5672.820736	+ 11314.853640
16-67	- 150946.441	- 38605.410	+ 5586.573654	+ 6368.450560
16-48	- 150968.291	- 38576.853	+ 7198.554310	+ 3569.130173
			+ 33434.643893	+ 35430.713741
		倍面積	= 1996.069848	
		面積	= 998.034924	

4 LOT

点 名	X	Y	(X-X0)*(YN-1-Y0)	(XN-1-X0)*(Y-Y0)
X0·Y0	- 150900.000	- 38500.000		
16-6	- 150994.060	- 38593.896		
16-7	- 151007.569	- 38604.273	+ 10100.298824	+ 9807.918380

\* \* \* \* \* 各 筆 面 積 計 算 書 \* \* \* \* \*

点 名	X	Y	(X-X0)*(YN-1-Y0)	(XN-1-X0)*(Y-Y0)
16-49	- 151017.092	- 38612.468	+ 12209.534116	+ 12098.070292
16-69	- 151004.164	- 38629.325	+ 11715.116752	+ 15142.922900
16-61	- 150981.579	- 38603.689	+ 10550.204175	+ 10800.660996
16-6	- 150994.060	- 38593.896	+ 9752.987340	+ 7659.941784
			+ 54328.141207	+ 55509.514352
		倍面積	= 1181.373145	
		面積	= 590.686572	

5 LOT

点 名	X	Y	(X-X0)*(YN-1-Y0)	(XN-1-X0)*(Y-Y0)
X0-Y0	- 151000.000	- 38600.000		
16-49	- 151017.092	- 38612.468		
16-50	- 151017.767	- 38613.049	+ 221.518956	+ 223.033508
16-70	- 151004.768	- 38630.010	+ 62.217632	+ 533.187670
16-69	- 151004.164	- 38629.325	+ 124.961640	+ 139.821600
16-49	- 151017.092	- 38612.468	+ 501.222900	+ 51.916752
			+ 909.921128	+ 947.959530
		倍面積	= 38.038402	
		面積	= 19.019201	

6 LOT

点 名	X	Y	(X-X0)*(YN-1-Y0)	(XN-1-X0)*(Y-Y0)
X0-Y0	- 151000.000	- 38600.000		
16-50	- 151017.767	- 38613.049		
16-39	- 151023.414	- 38617.908	+ 305.529286	+ 318.171436
16-43	- 151023.486	- 38618.757	+ 420.587288	+ 439.176398
16-51	- 151019.042	- 38624.031	+ 357.170794	+ 564.392066
16-71	- 151013.139	- 38619.088	+ 315.743309	+ 363.473696
16-50	- 151017.767	- 38613.049	+ 339.136496	+ 171.450811
			+ 1738.167173	+ 1856.664407
		倍面積	= 118.497234	
		面積	= 59.248617	

7 LOT

点 名	X	Y	(X-X0)*(YN-1-Y0)	(XN-1-X0)*(Y-Y0)
X0-Y0	- 151000.000	- 38600.000		
16-51	- 151019.042	- 38624.031		
16-44	- 151010.265	- 38634.447	+ 246.678215	+ 655.939774
16-52	- 151009.085	- 38634.911	+ 312.950995	+ 358.361415
16-70	- 151004.768	- 38630.010	+ 166.455648	+ 272.640850
16-71	- 151013.139	- 38619.088	+ 394.301390	+ 91.011584
16-51	- 151019.042	- 38624.031	+ 363.473696	+ 315.743309

\* \* \* \* \* 各 筆 面 積 計 算 書 \* \* \* \* \*

点 名	X	Y	(X-X0)*(YN-1-Y0)	(XN-1-X0)*(Y-Y0)
			+ 1483.859944	+ 1693.696932
		倍面積	= 209.836988	
		面積	= 104.918494	

8 LOT

点 名	X	Y	(X-X0)*(YN-1-Y0)	(XN-1-X0)*(Y-Y0)
X0-Y0	- 150900.000	- 38600.000		
16-52	- 151009.085	- 38634.911		
16-53	- 150975.226	- 38648.212	+ 2626.214886	+ 5259.206020
16-59	- 150958.101	- 38622.057	+ 2801.165412	+ 1659.259882
16-60	- 150960.416	- 38620.294	+ 1332.595712	+ 1179.101694
16-61	- 150981.579	- 38603.689	+ 1655.564226	+ 222.874624
16-52	- 151009.085	- 38634.911	+ 402.414565	+ 2848.004469
			+ 8817.954801	+ 11168.446689
		倍面積	= 2350.491888	
		面積	= 1175.245944	

9 LOT

点 名	X	Y	(X-X0)*(YN-1-Y0)	(XN-1-X0)*(Y-Y0)
X0-Y0	- 150900.000	- 38600.000		
16-53	- 150975.226	- 38648.212		
16-45	- 150951.264	- 38657.626	+ 2471.539968	+ 4334.973476
16-42	- 150950.597	- 38657.383	+ 2915.702722	+ 2941.682112
16-11	- 150950.276	- 38656.833	+ 2884.987708	+ 2875.579301
16-12	- 150948.667	- 38654.083	+ 2765.891611	+ 2719.076908
16-13	- 150947.015	- 38651.360	+ 2542.712245	+ 2499.537120
16-14	- 150945.256	- 38648.709	+ 2324.348160	+ 2290.053635
16-54	- 150945.042	- 38648.396	+ 2193.950778	+ 2190.209376
16-62	- 150966.263	- 38634.523	+ 3206.864148	+ 1554.984966
16-53	- 150975.226	- 38648.212	+ 2597.027198	+ 3194.671756
			+ 23903.024538	+ 24600.768650
		倍面積	= 697.744112	
		面積	= 348.872056	

10 LOT

点 名	X	Y	(X-X0)*(YN-1-Y0)	(XN-1-X0)*(Y-Y0)
X0-Y0	- 150900.000	- 38600.000		
16-54	- 150945.042	- 38648.396		
16-15	- 150943.453	- 38646.080	+ 2102.951388	+ 2075.535360
16-16	- 150941.612	- 38643.477	+ 1917.480960	+ 1889.206081
16-17	- 150939.729	- 38640.908	+ 1727.297733	+ 1702.263696
16-18	- 150937.803	- 38638.373	+ 1546.445124	+ 1524.520917

\* \* \* \* \* 各 筆 面 積 計 算 書 \* \* \* \* \*

点 名	X	Y	(X-X0)*(YN-1-Y0)	(XN-1-X0)*(Y-Y0)
16-55	- 150937.578	- 38638.091	+ 1441.980594	+ 1439.954073
16-59	- 150958.101	- 38622.057	+ 2213.125191	+ 828.857946
16-62	- 150966.263	- 38634.523	+ 1461.562991	+ 2005.820823
16-54	- 150945.042	- 38648.396	+ 1554.984966	+ 3206.864148
			+ 13965.828947	+ 14673.023044
		倍面積	= 707.194097	
		面積	= 353.597048	

11 LOT

点 名	X	Y	(X-X0)*(YN-1-Y0)	(XN-1-X0)*(Y-Y0)
X0-Y0	- 150900.000	- 38600.000		
16-55	- 150937.578	- 38638.091		
16-19	- 150935.818	- 38635.880	+ 1364.343438	+ 1348.298640
16-20	- 150933.770	- 38633.440	+ 1211.667600	+ 1197.753920
16-21	- 150931.690	- 38631.025	+ 1059.713600	+ 1047.714250
16-56	- 150930.266	- 38629.425	+ 939.002650	+ 932.478250
16-68	- 150950.862	- 38610.119	+ 1496.614350	+ 306.261654
16-60	- 150960.416	- 38620.294	+ 611.349504	+ 1032.193428
16-59	- 150958.101	- 38622.057	+ 1179.101694	+ 1332.595712
16-55	- 150937.578	- 38638.091	+ 828.857946	+ 2213.125191
			+ 8690.650782	+ 9410.421045
		倍面積	= 719.770263	
		面積	= 359.885131	

12 LOT

点 名	X	Y	(X-X0)*(YN-1-Y0)	(XN-1-X0)*(Y-Y0)
X0-Y0	- 150900.000	- 38600.000		
16-56	- 150930.266	- 38629.425		
16-22	- 150929.571	- 38628.645	+ 870.126675	+ 866.969570
16-23	- 150927.397	- 38626.310	+ 784.787065	+ 778.013010
16-24	- 150925.160	- 38624.051	+ 661.959600	+ 658.925247
16-25	- 150922.860	- 38621.846	+ 549.805860	+ 549.645360
16-57	- 150920.827	- 38619.929	+ 454.986642	+ 455.576940
16-66	- 150941.695	- 38600.356	+ 830.939655	+ 7.414412
16-68	- 150950.862	- 38610.119	+ 18.106872	+ 421.911705
16-56	- 150930.266	- 38629.425	+ 306.261654	+ 1496.614350
			+ 4476.974023	+ 5235.070594
		倍面積	= 758.096571	
		面積	= 379.048285	

13 LOT

点 名	X	Y	(X-X0)*(YN-1-Y0)	(XN-1-X0)*(Y-Y0)
X0-Y0	- 150900.000	- 38500.000		
16-57	- 150920.827	- 38619.929		
16-26	- 150920.543	- 38619.661	+ 2463.701447	+ 2492.179647



\* \* \* \* \* 各 筆 面 積 計 算 書 \* \* \* \* \*

点 名	X	Y	(X-X0)*(Yn-1-Y0)	(Xn-1-X0)*(Y-Y0)
16-27	- 150918.187	- 38617.518	+ 2176.274607	+ 2414.172274
16-28	- 150915.771	- 38615.437	+ 1853.376378	+ 2099.452719
16-29	- 150913.327	- 38613.397	+ 1538.428899	+ 1788.384087
16-30	- 150910.841	- 38611.405	+ 1229.336877	+ 1484.694435
16-31	- 150908.317	- 38609.459	+ 926.555385	+ 1186.645019
16-58	- 150906.492	- 38608.108	+ 710.607828	+ 899.134236
16-63	- 150923.279	- 38585.391	+ 2516.646132	+ 554.358372
16-65	- 150937.482	- 38595.869	+ 3200.625462	+ 2231.734451
16-66	- 150941.695	- 38600.356	+ 3997.257955	+ 3761.543592
16-57	- 150920.827	- 38619.929	+ 2090.114412	+ 5000.439655
			+ 22702.925382	+ 23912.738487
		倍面積	= 1209.813105	
		面積	= 604.906552	

14 LOT

点 名	X	Y	(X-X0)*(Yn-1-Y0)	(Xn-1-X0)*(Y-Y0)
X0-Y0	- 150800.000	- 38500.000		
16-58	- 150906.492	- 38608.108		
16-32	- 150905.756	- 38607.564	+ 11433.069648	+ 11454.705488
16-33	- 150903.145	- 38605.743	+ 11094.688780	+ 11182.956708
16-34	- 150900.509	- 38603.956	+ 10628.123187	+ 10722.541620
16-35	- 150898.883	- 38602.873	+ 10279.481148	+ 10339.662357
16-36	- 150898.091	- 38600.003	+ 10090.915443	+ 9888.596649
16-46	- 150910.583	- 38576.025	+ 11058.631749	+ 7457.368275
16-63	- 150923.279	- 38585.391	+ 9372.285975	+ 9442.792953
16-58	- 150906.492	- 38608.108	+ 9093.458372	+ 13327.446132
			+ 83050.654302	+ 83816.070182
		倍面積	= 765.415880	
		面積	= 382.707940	

210

点 名	X	Y	(X-X0)*(Yn-1-Y0)	(Xn-1-X0)*(Y-Y0)
X0-Y0	- 150900.000	- 38600.000		
16-43	- 151023.486	- 38618.757		
16-40	- 151023.664	- 38620.867	+ 2319.565648	+ 2576.782362
16-9	- 151011.167	- 38635.704	+ 2319.721789	+ 4415.299456
16-41	- 150953.448	- 38658.420	+ 1908.307392	+ 6494.376140
16-45	- 150951.264	- 38657.626	+ 2994.842880	+ 3079.994448
16-44	- 151010.265	- 38634.447	+ 6354.130890	+ 1765.891008
16-43	- 151023.486	- 38618.757	+ 4253.722242	+ 2068.240605
			+ 20150.290841	+ 20400.584019
		倍面積	= 250.293178	
		面積	= 125.146589	

\* \* \* \* \* 各 筆 面 積 計 算 書 \* \* \* \* \*

1 区画

点 名	X	Y	(X-X0)*(YN-1-Y0)	(XN-1-X0)*(Y-Y0)
X0-Y0	- 150800.000	- 38600.000		
16-1	- 150897.185	- 38601.742		
16-35	- 150898.883	- 38602.873	+ 172.254186	+ 279.212505
16-36	- 150898.091	- 38600.003	+ 281.815443	+ 0.296649
16-1	- 150897.185	- 38601.742	+ 0.291555	+ 170.874522
			+ 454.361184	+ 450.383676
		倍面積	= 3.977508	
		面積	= 1.988754	

2 区画

点 名	X	Y	(X-X0)*(YN-1-Y0)	(XN-1-X0)*(Y-Y0)
X0-Y0	- 150900.000	- 38500.000		
16-2	- 150923.302	- 38551.611		
16-37	- 150922.318	- 38553.500	+ 1151.854298	+ 1246.657000
16-38	- 150925.184	- 38552.621	+ 1347.344000	+ 1174.395478
16-2	- 150923.302	- 38551.611	+ 1226.174542	+ 1299.771424
			+ 3725.372840	+ 3720.823902
		倍面積	= 4.548938	
		面積	= 2.274469	

8 区画

点 名	X	Y	(X-X0)*(YN-1-Y0)	(XN-1-X0)*(Y-Y0)
X0-Y0	- 151000.000	- 38600.000		
16-8	- 151025.004	- 38619.276		
16-39	- 151023.414	- 38617.908	+ 451.328264	+ 447.771632
16-40	- 151023.664	- 38620.867	+ 423.774912	+ 488.579938
16-8	- 151025.004	- 38619.276	+ 521.758468	+ 456.147264
			+ 1396.861644	+ 1392.498834
		倍面積	= 4.362810	
		面積	= 2.181405	

10 区画

点 名	X	Y	(X-X0)*(YN-1-Y0)	(XN-1-X0)*(Y-Y0)
X0-Y0	- 150900.000	- 38600.000		
16-10	- 150951.620	- 38659.140		
16-41	- 150953.448	- 38658.420	+ 3160.914720	+ 3015.640400
16-42	- 150950.597	- 38657.383	+ 2955.876740	+ 3067.006584
16-10	- 150951.620	- 38659.140	+ 2962.110460	+ 2992.306580
			+ 9078.901920	+ 9074.953564
		倍面積	= 3.948356	
		面積	= 1.974178	