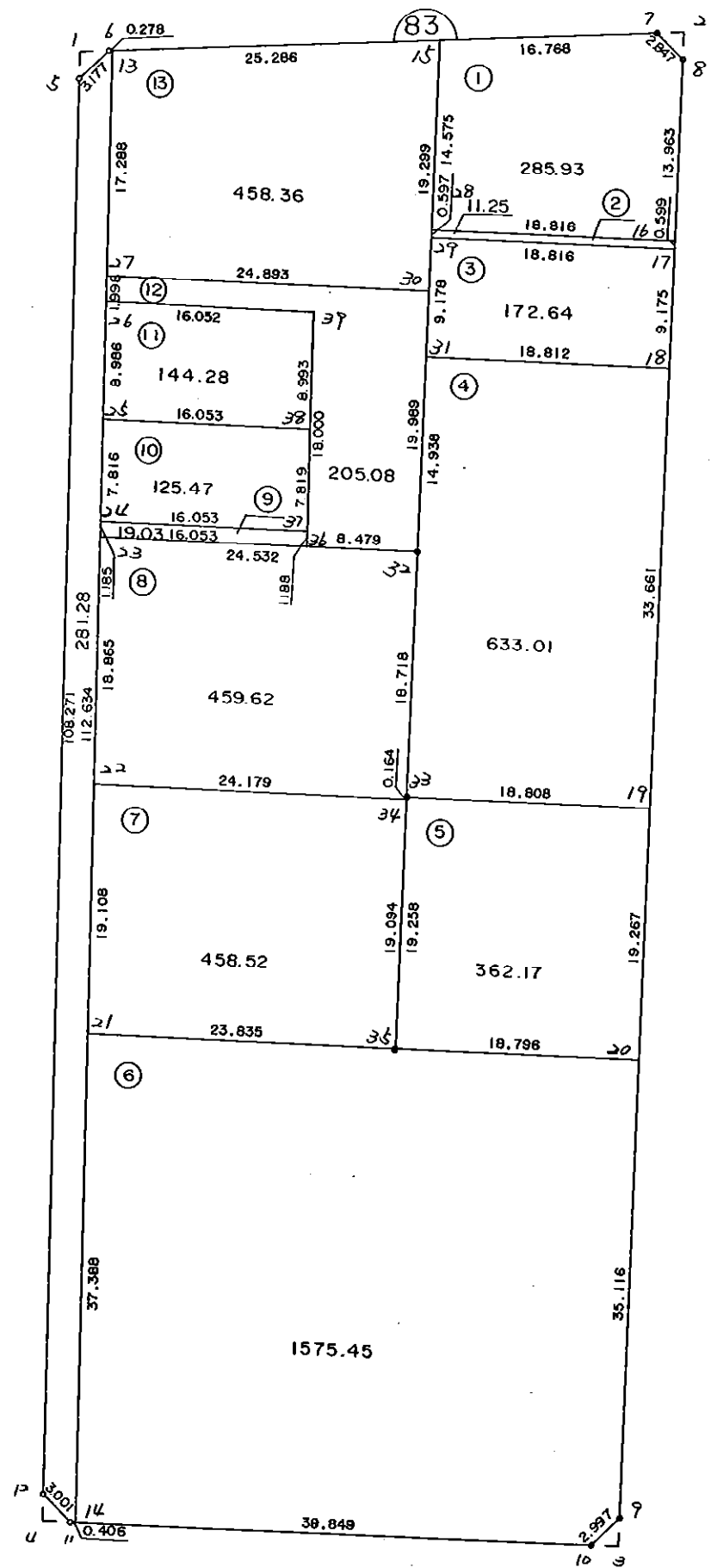


8 3 B L O C K

[



* * * 各筆面積 集計表 * * *

街区名・筆名	各筆面積	隅切面積
83 BLOCK	5192.17	
1 LOT	285.93	
2 LOT	11.25	
3 LOT	172.64	
4 LOT	633.01	
5 LOT	362.17	
6 LOT	1575.45	
7 LOT	458.52	
8 LOT	459.62	
9 LOT	19.03	
10 LOT	125.47	
11 LOT	144.28	
12 LOT	205.08	
13 LOT	458.36	
スロ	281.28	
1 スキリ		2.36
2 スキリ		2.19
3 スキリ		2.23
4 スキリ		2.21
合計 =	5192.09	8.99

* * * * * 各 筆 面 積 計 算 書 * * * * *

83 BLOCK

点 名	X	Y	(X-X0)*(YN-1-Y0)	(XN-1-X0)*(Y-Y0)
X0·Y0	- 151100.000	- 39500.000		
83-5	- 151134.514	- 39575.050		
83-6	- 151132.206	- 39572.867	+ 2417.060300	+ 2514.931638
83-7	- 151128.195	- 39530.725	+ 2054.485065	+ 989.529350
83-8	- 151130.078	- 39528.589	+ 924.146550	+ 806.066855
83-9	- 151241.846	- 39526.907	+ 4055.235294	+ 809.308746
83-10	- 151244.025	- 39528.965	+ 3875.280675	+ 4108.569390
83-11	- 151244.757	- 39569.213	+ 4192.886505	+ 9968.402325
83-12	- 151242.724	- 39571.420	+ 9878.356212	+ 10338.544940
83-5	- 151134.514	- 39575.050	+ 2464.989880	+ 10711.436200
			+ 29862.440481	+ 40246.789444
		倍面積	= 10384.348963	
		面積	= 5192.174481	

1 LOT

点 名	X	Y	(X-X0)*(YN-1-Y0)	(XN-1-X0)*(Y-Y0)
X0·Y0	- 151100.000	- 39500.000		
83-15	- 151129.784	- 39547.418		
83-7	- 151128.195	- 39530.725	+ 1336.950510	+ 915.113400
83-8	- 151130.078	- 39528.589	+ 924.146550	+ 806.066855
83-16	- 151144.039	- 39528.379	+ 1259.030971	+ 853.583562
83-28	- 151144.357	- 39547.192	+ 1258.807303	+ 2078.288488
83-15	- 151129.784	- 39547.418	+ 1405.566528	+ 2103.320226
			+ 6184.501862	+ 6756.372531
		倍面積	= 571.870669	
		面積	= 285.935334	

2 LOT

点 名	X	Y	(X-X0)*(YN-1-Y0)	(XN-1-X0)*(Y-Y0)
X0·Y0	- 151100.000	- 39500.000		
83-16	- 151144.039	- 39528.379		
83-17	- 151144.638	- 39528.370	+ 1266.781802	+ 1249.386430
83-29	- 151144.954	- 39547.183	+ 1275.344980	+ 2106.154754
83-28	- 151144.357	- 39547.192	+ 2092.896331	+ 2121.469168
83-16	- 151144.039	- 39528.379	+ 2078.288488	+ 1258.807303
			+ 6713.311601	+ 6735.817655
		倍面積	= 22.506054	
		面積	= 11.253027	

3 LOT

点 名	X	Y	(X-X0)*(YN-1-Y0)	(XN-1-X0)*(Y-Y0)
X0·Y0	- 151100.000	- 39500.000		
83-17	- 151144.638	- 39528.370		
83-18	- 151153.812	- 39528.232	+ 1526.646440	+ 1260.220016

* * * * * 各 筆 面 積 計 算 書 * * * * *

点 名	X	Y	(X-X0)*(YN-1-Y0)	(XN-1-X0)*(Y-Y0)
83-31	- 151154.131	- 39547.041	+ 1528.226392	+ 2531.370292
83-29	- 151144.954	- 39547.183	+ 2114.681114	+ 2554.062973
83-17	- 151144.638	- 39528.370	+ 2106.154754	+ 1275.344980
			+ 7275.708700	+ 7620.998261
		倍面積	= 345.289561	
		面積	= 172.644780	

4 LOT

点 名	X	Y	(X-X0)*(YN-1-Y0)	(XN-1-X0)*(Y-Y0)
X0-Y0	- 151100.000	- 39500.000		
83-18	- 151153.812	- 39528.232		
83-19	- 151187.469	- 39527.725	+ 2469.424808	+ 1491.937700
83-33	- 151187.783	- 39546.530	+ 2433.783675	+ 4069.932570
83-32	- 151169.067	- 39546.809	+ 3213.687510	+ 4109.034447
83-31	- 151154.131	- 39547.041	+ 2533.817979	+ 3248.980747
83-18	- 151153.812	- 39528.232	+ 2531.370292	+ 1528.226392
			+ 13182.084264	+ 14448.111856
		倍面積	= 1266.027592	
		面積	= 633.013796	

5 LOT

点 名	X	Y	(X-X0)*(YN-1-Y0)	(XN-1-X0)*(Y-Y0)
X0-Y0	- 151100.000	- 39500.000		
83-19	- 151187.469	- 39527.725		
83-20	- 151206.734	- 39527.435	+ 2959.200150	+ 2399.712015
83-35	- 151207.039	- 39546.229	+ 2936.614965	+ 4934.206086
83-33	- 151187.783	- 39546.530	+ 4058.120307	+ 4980.524670
83-19	- 151187.469	- 39527.725	+ 4069.932570	+ 2433.783675
			+ 14023.867992	+ 14748.226446
		倍面積	= 724.358454	
		面積	= 362.179227	

6 LOT

点 名	X	Y	(X-X0)*(YN-1-Y0)	(XN-1-X0)*(Y-Y0)
X0-Y0	- 151200.000	- 39500.000		
83-20	- 151206.734	- 39527.435		
83-9	- 151241.846	- 39526.907	+ 1148.045010	+ 181.191738
83-10	- 151244.025	- 39528.965	+ 1184.580675	+ 1212.069390
83-14	- 151244.750	- 39568.807	+ 1296.183750	+ 3029.228175
83-21	- 151207.383	- 39570.062	+ 508.002081	+ 3135.274500
83-35	- 151207.039	- 39546.229	+ 493.166418	+ 341.308707
83-20	- 151206.734	- 39527.435	+ 311.306086	+ 193.114965

* * * * * 各 筆 面 積 計 算 書 * * * * *

点 名	X	Y	(X-X0)*(YN-1-Y0)	(XN-1-X0)*(Y-Y0)
			+ 4941.284020	+ 8092.187475
		倍面積	= 3150.903455	
		面積	= 1575.451727	

7 LOT

点 名	X	Y	(X-X0)*(YN-1-Y0)	(XN-1-X0)*(Y-Y0)
X0·Y0	- 151100.000	- 39500.000		
83-21	- 151207.383	- 39570.062		
83-22	- 151188.286	- 39570.704	+ 6185.493732	+ 7592.407632
83-34	- 151187.947	- 39546.527	+ 6218.204688	+ 4107.682722
83-35	- 151207.039	- 39546.229	+ 4980.203553	+ 4065.701863
83-21	- 151207.383	- 39570.062	+ 4964.208707	+ 7499.366418
			+ 22348.110680	+ 23265.158635
		倍面積	= 917.047955	
		面積	= 458.523977	

8 LOT

点 名	X	Y	(X-X0)*(YN-1-Y0)	(XN-1-X0)*(Y-Y0)
X0·Y0	- 151100.000	- 39500.000		
83-22	- 151188.286	- 39570.704		
83-23	- 151169.432	- 39571.338	+ 4909.120128	+ 6298.146668
83-32	- 151169.067	- 39546.809	+ 4927.101646	+ 3250.042488
83-33	- 151187.783	- 39546.530	+ 4109.034447	+ 3213.687510
83-34	- 151187.947	- 39546.527	+ 4092.173910	+ 4084.279641
83-22	- 151188.286	- 39570.704	+ 4107.682722	+ 6218.204688
			+ 22145.112853	+ 23064.360995
		倍面積	= 919.248142	
		面積	= 459.624071	

9 LOT

点 名	X	Y	(X-X0)*(YN-1-Y0)	(XN-1-X0)*(Y-Y0)
X0·Y0	- 151100.000	- 39500.000		
83-23	- 151169.432	- 39571.338		
83-24	- 151168.248	- 39571.378	+ 4868.675824	+ 4955.917296
83-37	- 151168.006	- 39555.327	+ 4854.132268	+ 3775.957096
83-36	- 151169.193	- 39555.287	+ 3828.241111	+ 3759.847722
83-23	- 151169.432	- 39571.338	+ 3838.686984	+ 4936.090234
			+ 17389.736187	+ 17427.812348
		倍面積	= 38.076161	
		面積	= 19.038080	

* * * * * 各 筆 面 積 計 算 書 * * * * *

10 LOT

点 名	X	Y	(X-X0)*(YN-1-Y0)	(XN-1-X0)*(Y-Y0)
X0·Y0	- 151100.000	- 39500.000		
83-24	- 151168.248	- 39571.378		
83-25	- 151160.436	- 39571.641	+ 4313.800808	+ 4889.354968
83-38	- 151160.191	- 39555.590	+ 4312.143431	+ 3359.637240
83-37	- 151168.006	- 39555.327	+ 3780.453540	+ 3330.187457
83-24	- 151168.248	- 39571.378	+ 3775.957096	+ 4854.132268
			+ 16182.354875	+ 16433.311933
		倍面積	= 250.957058	
		面積	= 125.478529	

11 LOT

点 名	X	Y	(X-X0)*(YN-1-Y0)	(XN-1-X0)*(Y-Y0)
X0·Y0	- 151100.000	- 39500.000		
83-25	- 151160.436	- 39571.641		
83-26	- 151151.455	- 39571.942	+ 3686.287655	+ 4347.886712
83-39	- 151151.203	- 39555.892	+ 3683.646226	+ 2875.922860
83-38	- 151160.191	- 39555.590	+ 3364.195372	+ 2846.374770
83-25	- 151160.436	- 39571.641	+ 3359.637240	+ 4312.143431
			+ 14093.766493	+ 14382.327773
		倍面積	= 288.561280	
		面積	= 144.280640	

12 LOT

点 名	X	Y	(X-X0)*(YN-1-Y0)	(XN-1-X0)*(Y-Y0)
X0·Y0	- 151100.000	- 39500.000		
83-26	- 151151.455	- 39571.942		
83-27	- 151149.458	- 39572.009	+ 3558.107436	+ 3705.223095
83-30	- 151149.081	- 39547.119	+ 3534.273729	+ 2330.411502
83-32	- 151169.067	- 39546.809	+ 3254.367973	+ 2297.432529
83-32	- 151169.067	- 39546.809	+ 3232.957203	+ 3232.957203
83-36	- 151169.193	- 39555.287	+ 3238.855137	+ 3818.507229
83-39	- 151151.203	- 39555.892	+ 2830.860261	+ 3867.335156
83-26	- 151151.455	- 39571.942	+ 2875.922860	+ 3683.646226
			+ 22525.344599	+ 22935.512940
		倍面積	= 410.168341	
		面積	= 205.084170	

13 LOT

点 名	X	Y	(X-X0)*(YN-1-Y0)	(XN-1-X0)*(Y-Y0)
X0·Y0	- 151100.000	- 39500.000		
83-27	- 151149.458	- 39572.009		
83-13	- 151132.180	- 39572.590	+ 2317.249620	+ 3590.156220

* * * * * 各 筆 面 積 計 算 書 * * * * *

点 名	X	Y	(X-X0)*(YN-1-Y0)	(XN-1-X0)*(Y-Y0)
83-15	- 151129.784	- 39547.418	+ 2162.020560	+ 1525.911240
83-30	- 151149.081	- 39547.119	+ 2327.322858	+ 1403.392296
83-27	- 151149.458	- 39572.009	+ 2330.411502	+ 3534.273729
			+ 9137.004540	+ 10053.733485
		倍面積	= 916.728945	
		面積	= 458.364472	

210

点 名	X	Y	(X-X0)*(YN-1-Y0)	(XN-1-X0)*(Y-Y0)
X0-Y0	- 151100.000	- 39500.000		
83-14	- 151244.750	- 39568.807		
83-11	- 151244.757	- 39569.213	+ 9960.294899	+ 10018.581750
83-12	- 151242.724	- 39571.420	+ 9878.356212	+ 10338.544940
83-5	- 151134.514	- 39575.050	+ 2464.989880	+ 10711.436200
83-6	- 151132.206	- 39572.867	+ 2417.060300	+ 2514.931638
83-13	- 151132.180	- 39572.590	+ 2344.860060	+ 2337.833540
83-14	- 151244.750	- 39568.807	+ 10507.402500	+ 2214.209260
			+ 37572.963851	+ 38135.537328
		倍面積	= 562.573477	
		面積	= 281.286738	

1 2340

点 名	X	Y	(X-X0)*(YN-1-Y0)	(XN-1-X0)*(Y-Y0)
X0-Y0	- 151100.000	- 39500.000		
83-1	- 151132.420	- 39575.120		
83-5	- 151134.514	- 39575.050	+ 2592.691680	+ 2433.121000
83-6	- 151132.206	- 39572.867	+ 2417.060300	+ 2514.931638
83-1	- 151132.420	- 39575.120	+ 2362.348140	+ 2419.314720
			+ 7372.100120	+ 7367.367358
		倍面積	= 4.732762	
		面積	= 2.366381	

2 2340

点 名	X	Y	(X-X0)*(YN-1-Y0)	(XN-1-X0)*(Y-Y0)
X0-Y0	- 151100.000	- 39500.000		
83-2	- 151127.995	- 39528.620		
83-7	- 151128.195	- 39530.725	+ 806.940900	+ 860.146375
83-8	- 151130.078	- 39528.589	+ 924.146500	+ 806.066855
83-2	- 151127.995	- 39528.620	+ 800.349055	+ 860.832360
			+ 2531.436505	+ 2527.045590
		倍面積	= 4.390915	
		面積	= 2.195457	

* * * * * 各 筆 面 積 計 算 書 * * * * *

3 区別

点 名	X	Y	(X-X0)*(YN-1-Y0)	(XN-1-X0)*(Y-Y0)
X0-Y0	- 151200.000	- 39500.000		
83-3	- 151243.987	- 39526.875		
83-9	- 151241.846	- 39526.907	+ 1124.611250	+ 1183.558209
83-10	- 151244.025	- 39528.965	+ 1184.580675	+ 1212.069390
83-3	- 151243.987	- 39526.875	+ 1274.083455	+ 1183.171875
			+ 3583.275380	+ 3578.799474
		倍面積	= 4.475906	
		面積	= 2.237953	

4 区別

点 名	X	Y	(X-X0)*(YN-1-Y0)	(XN-1-X0)*(Y-Y0)
X0-Y0	- 151200.000	- 39500.000		
83-4	- 151244.796	- 39571.351		
83-11	- 151244.757	- 39569.213	+ 3193.456707	+ 3100.465548
83-12	- 151242.724	- 39571.420	+ 2957.056212	+ 3196.544940
83-4	- 151244.796	- 39571.351	+ 3199.330320	+ 3048.400124
			+ 9349.843239	+ 9345.410612
		倍面積	= 4.432627	
		面積	= 2.216313	