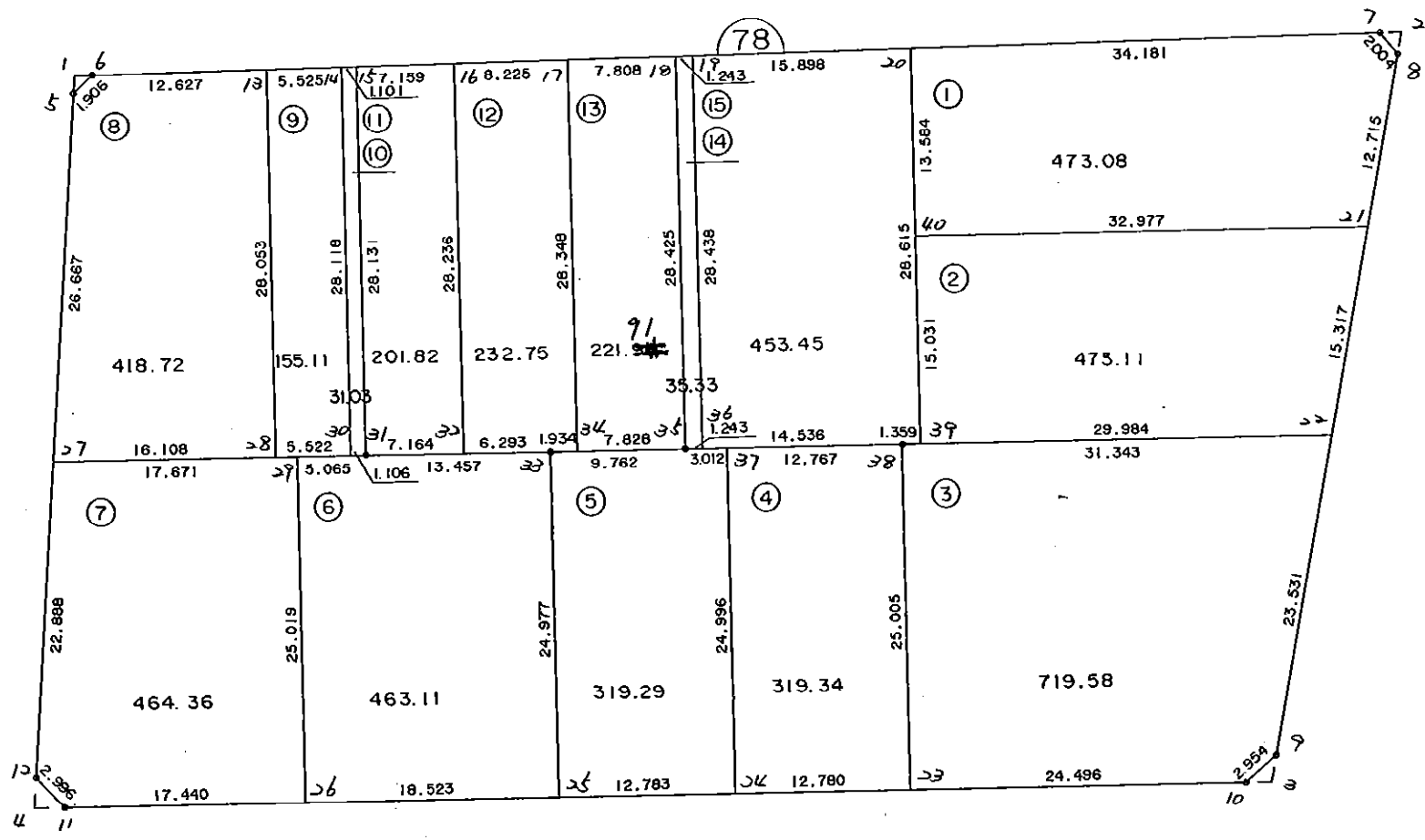


7 8 B L O C K

I



* * * 各筆面積 集計表 * * *

街区名・筆名	各筆面積	隅切面積
78 BLOCK	4982.10	
1 LOT	473.08	
2 LOT	473.11	
3 LOT	719.58	
4 LOT	319.34	
5 LOT	319.29	
6 LOT	463.11	
7 LOT	464.36	
8 LOT	418.72	
9 LOT	155.11	
10 LOT	31.03	
11 LOT	201.82	
12 LOT	232.75	
13 LOT	221.91	
14 LOT	35.33	
15 LOT	453.45	
1 入り		0.82
2 入り		1.23
3 入り		1.79
4 入り		2.42
合計 =	4981.99	6.26

* * * * * 各 筆 面 積 計 算 書 * * * * *

78 BLOCK

点 名	X	Y	(X-X0)*(YN-1-Y0)	(XN-1-X0)*(Y-Y0)
X0·Y0	- 151000.000	- 39300.000		
78-5	- 151062.498	- 39469.094		
78-6	- 151061.055	- 39467.849	+ 10324.034170	+ 10490.226802
78-7	- 151051.140	- 39374.608	+ 8583.797860	+ 4555.191440
78-8	- 151052.551	- 39373.185	+ 3920.725008	+ 3742.680900
78-9	- 151103.849	- 39378.407	+ 7600.189065	+ 4120.366257
78-10	- 151105.953	- 39380.480	+ 8307.456871	+ 8357.767520
78-11	- 151114.053	- 39466.120	+ 9178.985440	+ 17600.912360
78-12	- 151112.047	- 39468.345	+ 18613.247640	+ 19200.252285
78-5	- 151062.498	- 39469.094	+ 10521.225810	+ 18946.475418
			+ 77049.661864	+ 87013.872982
		倍面積	= 9964.211118	
		面積	= 4982.105559	

1 LOT

点 名	X	Y	(X-X0)*(YN-1-Y0)	(XN-1-X0)*(Y-Y0)
X0·Y0	- 151000.000	- 39300.000		
78-20	- 151054.754	- 39408.597		
78-7	- 151051.140	- 39374.608	+ 5553.650580	+ 4085.086432
78-8	- 151052.551	- 39373.185	+ 3920.725008	+ 3742.680900
78-21	- 151065.201	- 39374.473	+ 4771.735185	+ 3913.630623
78-40	- 151068.276	- 39407.306	+ 5084.718548	+ 6996.458506
78-20	- 151054.754	- 39408.597	+ 5875.432724	+ 7414.568772
			+ 25206.262045	+ 26152.425233
		倍面積	= 946.163188	
		面積	= 473.081594	

2 LOT

点 名	X	Y	(X-X0)*(YN-1-Y0)	(XN-1-X0)*(Y-Y0)
X0·Y0	- 151000.000	- 39300.000		
78-21	- 151065.201	- 39374.473		
78-22	- 151080.439	- 39376.024	+ 5990.533647	+ 4956.840824
78-39	- 151083.239	- 39405.877	+ 6328.161736	+ 8516.640003
78-40	- 151068.276	- 39407.306	+ 7228.858052	+ 8932.044134
78-21	- 151065.201	- 39374.473	+ 6996.458506	+ 5084.718548
			+ 26544.011941	+ 27490.243509
		倍面積	= 946.231568	
		面積	= 473.115784	

3 LOT

点 名	X	Y	(X-X0)*(YN-1-Y0)	(XN-1-X0)*(Y-Y0)
X0·Y0	- 151000.000	- 39300.000		
78-22	- 151080.439	- 39376.024		
78-9	- 151103.849	- 39378.407	+ 7895.016376	+ 6306.980673

* * * * * 各 筆 面 積 計 算 書 * * * * *

点 名	X	Y	(X-X0)*(YN-1-Y0)	(XN-1-X0)*(Y-Y0)
78-10	- 151105.953	- 39380.480	+ 8307.456871	+ 8357.767520
78-23	- 151108.259	- 39404.867	+ 8712.684320	+ 11110.973251
78-38	- 151083.366	- 39407.230	+ 8742.342322	+ 11608.612570
78-22	- 151080.439	- 39376.024	+ 8625.473970	+ 6337.816784
			+ 42282.973859	+ 43722.150798
		倍面積	= 1439.176939	
		面積	= 719.588469	

4 LOT

点 名	X	Y	(X-X0)*(YN-1-Y0)	(XN-1-X0)*(Y-Y0)
X0-Y0	- 151000.000	- 39400.000		
78-23	- 151108.259	- 39404.867		
78-24	- 151109.462	- 39417.590	+ 532.751554	+ 1904.275810
78-37	- 151084.577	- 39419.940	+ 1487.709430	+ 2182.672280
78-38	- 151083.366	- 39407.230	+ 1662.318040	+ 611.491710
78-23	- 151108.259	- 39404.867	+ 782.712570	+ 405.742322
			+ 4465.491594	+ 5104.182122
		倍面積	= 638.690528	
		面積	= 319.345264	

5 LOT

点 名	X	Y	(X-X0)*(YN-1-Y0)	(XN-1-X0)*(Y-Y0)
X0-Y0	- 151000.000	- 39400.000		
78-24	- 151109.462	- 39417.590		
78-25	- 151110.667	- 39430.316	+ 1946.632530	+ 3318.449992
78-33	- 151085.800	- 39432.655	+ 2601.112800	+ 3613.830885
78-35	- 151084.863	- 39422.938	+ 2771.201265	+ 1968.080400
78-37	- 151084.577	- 39419.940	+ 1940.027226	+ 1692.168220
78-24	- 151109.462	- 39417.590	+ 2182.672280	+ 1487.709430
			+ 11441.646101	+ 12080.238927
		倍面積	= 638.592826	
		面積	= 319.296413	

6 LOT

点 名	X	Y	(X-X0)*(YN-1-Y0)	(XN-1-X0)*(Y-Y0)
X0-Y0	- 151000.000	- 39400.000		
78-25	- 151110.667	- 39430.316		
78-26	- 151112.411	- 39448.757	+ 3407.851876	+ 5395.790919
78-29	- 151087.502	- 39451.098	+ 4266.335014	+ 5743.977278
78-31	- 151087.026	- 39446.056	+ 4446.854548	+ 4029.992112
78-33	- 151085.800	- 39432.655	+ 3951.604800	+ 2841.834030
78-25	- 151110.667	- 39430.316	+ 3613.830885	+ 2601.112800

* * * * * 各 筆 面 積 計 算 書 * * * * *

点 名	X	Y	(X-X0)*(YN-1-Y0)	(XN-1-X0)*(Y-Y0)
			+ 19686.477123	+ 20612.707139
		倍面積	= 926.230016	
		面積	= 463.115008	

7 LOT

点 名	X	Y	(X-X0)*(YN-1-Y0)	(XN-1-X0)*(Y-Y0)
X0·Y0	- 151000.000	- 39400.000		
78-26	- 151112.411	- 39448.757		
78-11	- 151114.053	- 39466.120	+ 5560.882121	+ 7432.615320
78-12	- 151112.047	- 39468.345	+ 7408.547640	+ 7794.952285
78-27	- 151089.162	- 39468.691	+ 6093.776890	+ 7696.620477
78-29	- 151087.502	- 39451.098	+ 6010.599882	+ 4555.999876
78-26	- 151112.411	- 39448.757	+ 5743.977278	+ 4266.335014
			+ 30817.783811	+ 31746.522972
		倍面積	= 928.739161	
		面積	= 464.369580	

8 LOT

点 名	X	Y	(X-X0)*(YN-1-Y0)	(XN-1-X0)*(Y-Y0)
X0·Y0	- 151000.000	- 39400.000		
78-27	- 151089.162	- 39468.691		
78-5	- 151062.498	- 39469.094	+ 4293.050118	+ 6160.559228
78-6	- 151061.055	- 39467.849	+ 4218.534170	+ 4240.426802
78-13	- 151059.720	- 39455.293	+ 4051.942280	+ 3375.914115
78-28	- 151087.649	- 39452.654	+ 4846.376157	+ 3144.496880
78-27	- 151089.162	- 39468.691	+ 4694.735948	+ 6020.697459
			+ 22104.638673	+ 22942.094484
		倍面積	= 837.455811	
		面積	= 418.727905	

9 LOT

点 名	X	Y	(X-X0)*(YN-1-Y0)	(XN-1-X0)*(Y-Y0)
X0·Y0	- 151000.000	- 39400.000		
78-13	- 151059.720	- 39455.293		
78-14	- 151059.136	- 39449.799	+ 3269.806848	+ 2973.996280
78-30	- 151087.130	- 39447.157	+ 4338.986870	+ 2788.676352
78-28	- 151087.649	- 39452.654	+ 4133.263893	+ 4587.743020
78-13	- 151059.720	- 39455.293	+ 3144.496880	+ 4846.376157
			+ 14886.554491	+ 15196.791809
		倍面積	= 310.237318	
		面積	= 155.118659	

* * * * * 各 筆 面 積 計 算 書 * * * * *

10 LOT

点 名	X	Y	(X-X0)*(YN-1-Y0)	(XN-1-X0)*(Y-Y0)
X0·Y0	- 151000.000	- 39400.000		
78-14	- 151059.136	- 39449.799		
78-15	- 151059.020	- 39448.704	+ 2939.136980	+ 2880.159744
78-31	- 151087.026	- 39446.056	+ 4238.514304	+ 2718.225120
78-30	- 151087.130	- 39447.157	+ 4012.859280	+ 4103.885082
78-14	- 151059.136	- 39449.799	+ 2788.676352	+ 4338.986870
			+ 13979.186916	+ 14041.256816
		倍面積	= 62.069900	
		面積	= 31.034950	

11 LOT

点 名	X	Y	(X-X0)*(YN-1-Y0)	(XN-1-X0)*(Y-Y0)
X0·Y0	- 151000.000	- 39400.000		
78-15	- 151059.020	- 39448.704		
78-16	- 151058.263	- 39441.585	+ 2837.641152	+ 2454.346700
78-32	- 151086.373	- 39438.922	+ 3591.821205	+ 2267.712486
78-31	- 151087.026	- 39446.056	+ 3387.225972	+ 3977.994888
78-15	- 151059.020	- 39448.704	+ 2718.225120	+ 4238.514304
			+ 12534.913449	+ 12938.568378
		倍面積	= 403.654929	
		面積	= 201.827464	

12 LOT

点 名	X	Y	(X-X0)*(YN-1-Y0)	(XN-1-X0)*(Y-Y0)
X0·Y0	- 151000.000	- 39400.000		
78-16	- 151058.263	- 39441.585		
78-17	- 151057.393	- 39433.406	+ 2386.687905	+ 1946.333778
78-34	- 151085.614	- 39430.730	+ 2860.021284	+ 1763.686890
78-33	- 151085.800	- 39432.655	+ 2636.634000	+ 2795.725170
78-32	- 151086.373	- 39438.922	+ 2820.510315	+ 3339.507600
78-16	- 151058.263	- 39441.585	+ 2267.712486	+ 3591.821205
			+ 12971.565990	+ 13437.074643
		倍面積	= 465.508653	
		面積	= 232.754326	

13 LOT

点 名	X	Y	(X-X0)*(YN-1-Y0)	(XN-1-X0)*(Y-Y0)
X0·Y0	- 151000.000	- 39400.000		
78-17	- 151057.393	- 39433.406		
78-18	- 151056.567	- 39425.642	+ 1889.677202	+ 1471.671306

* * * * * 各 筆 面 積 計 算 書 * * * * *

点 名	X	Y	(X-X0)*(YN-1-Y0)	(XN-1-X0)*(Y-Y0)
78-35	- 151084.863	- 39422.938	+ 2176.057046	+ 1297.533846
78-34	- 151085.614	- 39430.730	+ 1963.813932	+ 2607.839990
78-17	- 151057.393	- 39433.406	+ 1763.686890	+ 2860.021284
			+ 7793.235070	+ 8237.066426
		倍面積	= 443.831356	
		面積	= 221.915678	

14 LOT

点 名	X	Y	(X-X0)*(YN-1-Y0)	(XN-1-X0)*(Y-Y0)
X0·Y0	- 151000.000	- 39400.000		
78-18	- 151056.567	- 39425.642		
78-19	- 151056.436	- 39424.406	+ 1447.131912	+ 1380.574202
78-36	- 151084.745	- 39421.701	+ 2068.286470	+ 1224.717636
78-35	- 151084.863	- 39422.938	+ 1841.611963	+ 1943.880810
78-18	- 151056.567	- 39425.642	+ 1297.533846	+ 2176.057046
			+ 6654.564191	+ 6725.229694
		倍面積	= 70.665503	
		面積	= 35.332751	

15 LOT

点 名	X	Y	(X-X0)*(YN-1-Y0)	(XN-1-X0)*(Y-Y0)
X0·Y0	- 151000.000	- 39400.000		
78-19	- 151056.436	- 39424.406		
78-20	- 151054.754	- 39408.597	+ 1336.326124	+ 485.180292
78-39	- 151083.239	- 39405.877	+ 715.605683	+ 321.789258
78-38	- 151083.366	- 39407.230	+ 489.941982	+ 601.817970
78-36	- 151084.745	- 39421.701	+ 612.706350	+ 1809.125566
78-19	- 151056.436	- 39424.406	+ 1224.717636	+ 2068.286470
			+ 4379.297775	+ 5286.199556
		倍面積	= 906.901781	
		面積	= 453.450890	

1 区

点 名	X	Y	(X-X0)*(YN-1-Y0)	(XN-1-X0)*(Y-Y0)
X0·Y0	- 151000.000	- 39400.000		
78-1	- 151061.190	- 39469.114		
78-5	- 151062.498	- 39469.094	+ 4319.486772	+ 4227.861860
78-6	- 151061.055	- 39467.849	+ 4218.534170	+ 4240.426802
78-1	- 151061.190	- 39469.114	+ 4151.680310	+ 4219.755270
			+ 12689.701252	+ 12688.043932
		倍面積	= 1.657320	
		面積	= 0.828660	

* * * * * 各 筆 面 積 計 算 書 * * * * *

2 区画

点 名	X	Y	(X-X0)*(YN-1-Y0)	(XN-1-X0)*(Y-Y0)
X0-Y0	- 151000.000	- 39300.000		
78-2	- 151050.972	- 39373.024		
78-7	- 151051.140	- 39374.608	+ 3734.447360	+ 3802.918976
78-8	- 151052.551	- 39373.185	+ 3920.725008	+ 3742.680900
78-2	- 151050.972	- 39373.024	+ 3730.385820	+ 3837.484224
			+ 11385.558188	+ 11383.084100
		倍面積	= 2.474088	
		面積	= 1.237044	

3 区画

点 名	X	Y	(X-X0)*(YN-1-Y0)	(XN-1-X0)*(Y-Y0)
X0-Y0	- 151100.000	- 39300.000		
78-3	- 151105.776	- 39378.603		
78-9	- 151103.849	- 39378.407	+ 302.542947	+ 452.878832
78-10	- 151105.953	- 39380.480	+ 466.756871	+ 309.767520
78-3	- 151105.776	- 39378.603	+ 464.852480	+ 467.923659
			+ 1234.152298	+ 1230.570011
		倍面積	= 3.582287	
		面積	= 1.791143	

4 区画

点 名	X	Y	(X-X0)*(YN-1-Y0)	(XN-1-X0)*(Y-Y0)
X0-Y0	- 151100.000	- 39400.000		
78-4	- 151114.260	- 39468.312		
78-11	- 151114.053	- 39466.120	+ 959.988536	+ 942.871200
78-12	- 151112.047	- 39468.345	+ 796.547640	+ 960.452285
78-4	- 151114.260	- 39468.312	+ 974.599700	+ 822.954664
			+ 2731.135876	+ 2726.278149
		倍面積	= 4.857727	
		面積	= 2.428863	