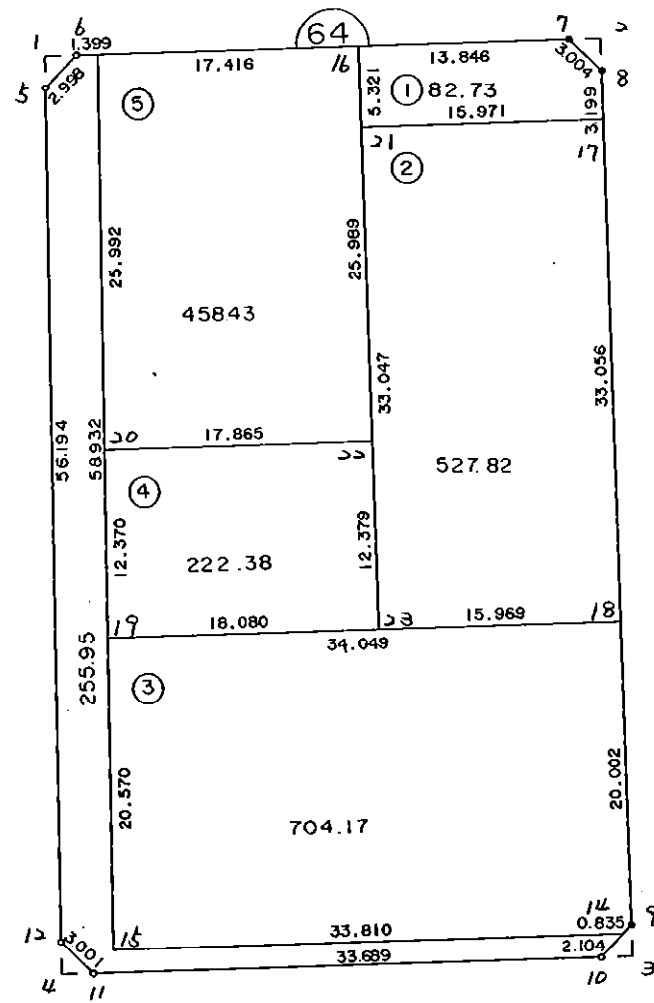


6 4 B L O C K



* * * 各筆面積 集計表 * * *

街区名・筆名	各筆面積	隅切面積
64 BLOCK	2251.48	
1 LOT	82.73	
2 LOT	527.82	
3 LOT	704.17	
4 LOT	222.38	
5 LOT	458.43	
入口	255.95	
1 スミナリ		2.20
2 スミナリ		2.25
3 スミナリ		2.15
4 スミナリ		2.29
合計 =	2251.48	8.89

* * * * * 各 筆 面 積 計 算 書 * * * * *

64 BLOCK

点 名	X	Y	(X-X0)*(YN-1-Y0)	(XN-1-X0)*(Y-Y0)
X0·Y0	- 151100.000	- 39300.000		
64-5	- 151182.793	- 39375.547		
64-6	- 151180.648	- 39373.452	+ 6092.714456	+ 6081.311436
64-7	- 151180.022	- 39340.798	+ 5877.775944	+ 3290.277104
64-8	- 151182.104	- 39338.633	+ 3349.678992	+ 3091.489926
64-9	- 151238.351	- 39337.591	+ 5344.914183	+ 3086.371464
64-10	- 151240.462	- 39339.636	+ 5280.107042	+ 5483.680236
64-11	- 151241.088	- 39373.318	+ 5592.163968	+ 10298.392916
64-12	- 151238.987	- 39375.461	+ 10190.248866	+ 10646.641568
64-5	- 151182.793	- 39375.547	+ 6247.642573	+ 10500.050889
			+ 47975.246024	+ 52478.215539
		倍面積	= 4502.969515	
		面積	= 2251.484757	

1 LOT

点 名	X	Y	(X-X0)*(YN-1-Y0)	(XN-1-X0)*(Y-Y0)
X0·Y0	- 151100.000	- 39300.000		
64-16	- 151180.287	- 39354.641		
64-7	- 151180.022	- 39340.798	+ 4372.482102	+ 3275.549026
64-8	- 151182.104	- 39338.633	+ 3349.678992	+ 3091.489926
64-17	- 151185.302	- 39338.574	+ 3295.472166	+ 3167.079696
64-21	- 151185.607	- 39354.542	+ 3302.204418	+ 4652.541684
64-16	- 151180.287	- 39354.641	+ 4379.013554	+ 4677.652087
			+ 18698.851232	+ 18864.312419
		倍面積	= 165.461187	
		面積	= 82.730593	

2 LOT

点 名	X	Y	(X-X0)*(YN-1-Y0)	(XN-1-X0)*(Y-Y0)
X0·Y0	- 151100.000	- 39300.000		
64-17	- 151185.302	- 39338.574		
64-18	- 151218.352	- 39337.961	+ 4565.310048	+ 3238.149222
64-23	- 151218.648	- 39353.927	+ 4503.996728	+ 6382.368304
64-21	- 151185.607	- 39354.542	+ 4616.528689	+ 6471.299216
64-17	- 151185.302	- 39338.574	+ 4652.541684	+ 3302.204418
			+ 18338.377149	+ 19394.021160
		倍面積	= 1055.644011	
		面積	= 527.822005	

3 LOT

点 名	X	Y	(X-X0)*(YN-1-Y0)	(XN-1-X0)*(Y-Y0)
X0·Y0	- 151200.000	- 39300.000		
64-18	- 151218.352	- 39337.961		
64-9	- 151238.351	- 39337.591	+ 1455.842311	+ 689.870032

* * * * * 各 筆 面 積 計 算 書 * * * * *

点 名	X	Y	(X-X0)*(YN-1-Y0)	(XN-1-X0)*(Y-Y0)
64-14	- 151238.951	- 39338.172	+ 1464.207041	+ 1463.934372
64-15	- 151239.553	- 39371.977	+ 1509.817116	+ 2803.576127
64-19	- 151218.983	- 39372.004	+ 1366.339391	+ 2847.974212
64-18	- 151218.352	- 39337.961	+ 1321.417408	+ 720.613663
			+ 7117.623267	+ 8525.968406
		倍面積	= 1408.345139	
		面積	= 704.172569	

4 LOT

点 名	X	Y	(X-X0)*(YN-1-Y0)	(XN-1-X0)*(Y-Y0)
X0-Y0	- 151200.000	- 39300.000		
64-19	- 151218.983	- 39372.004		
64-20	- 151206.613	- 39372.019	+ 476.162452	+ 1367.136677
64-22	- 151206.271	- 39354.157	+ 451.631149	+ 358.140241
64-23	- 151218.648	- 39353.927	+ 1009.919736	+ 338.176217
64-19	- 151218.983	- 39372.004	+ 1023.696241	+ 1342.730592
			+ 2961.409578	+ 3406.183727
		倍面積	= 444.774149	
		面積	= 222.387074	

5 LOT

点 名	X	Y	(X-X0)*(YN-1-Y0)	(XN-1-X0)*(Y-Y0)
X0-Y0	- 151100.000	- 39300.000		
64-20	- 151206.613	- 39372.019		
64-13	- 151180.621	- 39372.053	+ 5806.243799	+ 7681.786489
64-16	- 151180.287	- 39354.641	+ 5784.919211	+ 4405.212061
64-22	- 151206.271	- 39354.157	+ 5806.753711	+ 4348.103059
64-20	- 151206.613	- 39372.019	+ 5773.840241	+ 7653.531149
			+ 23171.756962	+ 24088.632758
		倍面積	= 916.875796	
		面積	= 458.437898	

710

点 名	X	Y	(X-X0)*(YN-1-Y0)	(XN-1-X0)*(Y-Y0)
X0-Y0	- 151100.000	- 39300.000		
64-14	- 151238.951	- 39338.172		
64-10	- 151240.462	- 39339.636	+ 5361.715464	+ 5507.461836
64-11	- 151241.088	- 39373.318	+ 5592.163968	+ 10298.392916
64-12	- 151238.987	- 39375.461	+ 10190.248866	+ 10646.641568
64-5	- 151182.793	- 39375.547	+ 6247.642573	+ 10500.050889
64-6	- 151180.648	- 39373.452	+ 6092.714456	+ 6081.311436
64-13	- 151180.621	- 39372.053	+ 5921.773692	+ 5810.930344

* * * * * 各 筆 面 積 計 算 書 * * * * *

点 名	X	Y	(X-X0)*(YN-1-Y0)	(XN-1-X0)*(Y-Y0)
64-15	- 151239.553	- 39371.977	+ 10055.212309	+ 5802.857717
64-14	- 151238.951	- 39338.172	+ 10001.276127	+ 5327.017116
			+ 59462.747455	+ 59974.663822
		倍面積	= 511.916367	
		面積	= 255.958183	

1 区画

点 名	X	Y	(X-X0)*(YN-1-Y0)	(XN-1-X0)*(Y-Y0)
X0-Y0	- 151100.000	- 39300.000		
64-1	- 151180.688	- 39375.550		
64-5	- 151182.793	- 39375.547	+ 6255.011150	+ 6095.736336
64-6	- 151180.648	- 39373.452	+ 6092.714456	+ 6081.311436
64-1	- 151180.688	- 39375.550	+ 5926.694976	+ 6092.956400
			+ 18274.420582	+ 18270.004172
		倍面積	= 4.416410	
		面積	= 2.208205	

2 区画

点 名	X	Y	(X-X0)*(YN-1-Y0)	(XN-1-X0)*(Y-Y0)
X0-Y0	- 151100.000	- 39300.000		
64-2	- 151179.981	- 39338.672		
64-7	- 151180.022	- 39340.798	+ 3094.610784	+ 3263.064838
64-8	- 151182.104	- 39338.633	+ 3349.678992	+ 3091.489926
64-2	- 151179.981	- 39338.672	+ 3089.905973	+ 3175.125888
			+ 9534.195749	+ 9529.680652
		倍面積	= 4.515097	
		面積	= 2.257548	

3 区画

点 名	X	Y	(X-X0)*(YN-1-Y0)	(XN-1-X0)*(Y-Y0)
X0-Y0	- 151200.000	- 39300.000		
64-3	- 151240.423	- 39337.553		
64-9	- 151238.351	- 39337.591	+ 1440.195103	+ 1519.540993
64-10	- 151240.462	- 39339.636	+ 1521.007042	+ 1520.080236
64-3	- 151240.423	- 39337.553	+ 1602.206028	+ 1519.469486
			+ 4563.408173	+ 4559.090715
		倍面積	= 4.317458	
		面積	= 2.158729	

4 区画

点 名	X	Y	(X-X0)*(YN-1-Y0)	(XN-1-X0)*(Y-Y0)
X0-Y0	- 151200.000	- 39300.000		
64-4	- 151241.128	- 39375.458		
64-11	- 151241.088	- 39373.318	+ 3100.418304	+ 3015.422704

* * * * * 各 筆 面 積 計 算 書 * * * * *

点 名	X	Y	(X-X0)*(YN-1-Y0)	(XN-1-X0)*(Y-Y0)
64-12	- 151238.987	- 39375.461	+ 2858.448866	+ 3100.541568
64-4	- 151241.128	- 39375.458	+ 3103.560008	+ 2941.881046
			+ 9062.427178	+ 9057.845318
		倍面積 =	4.581860	
		面積 =	2.290930	