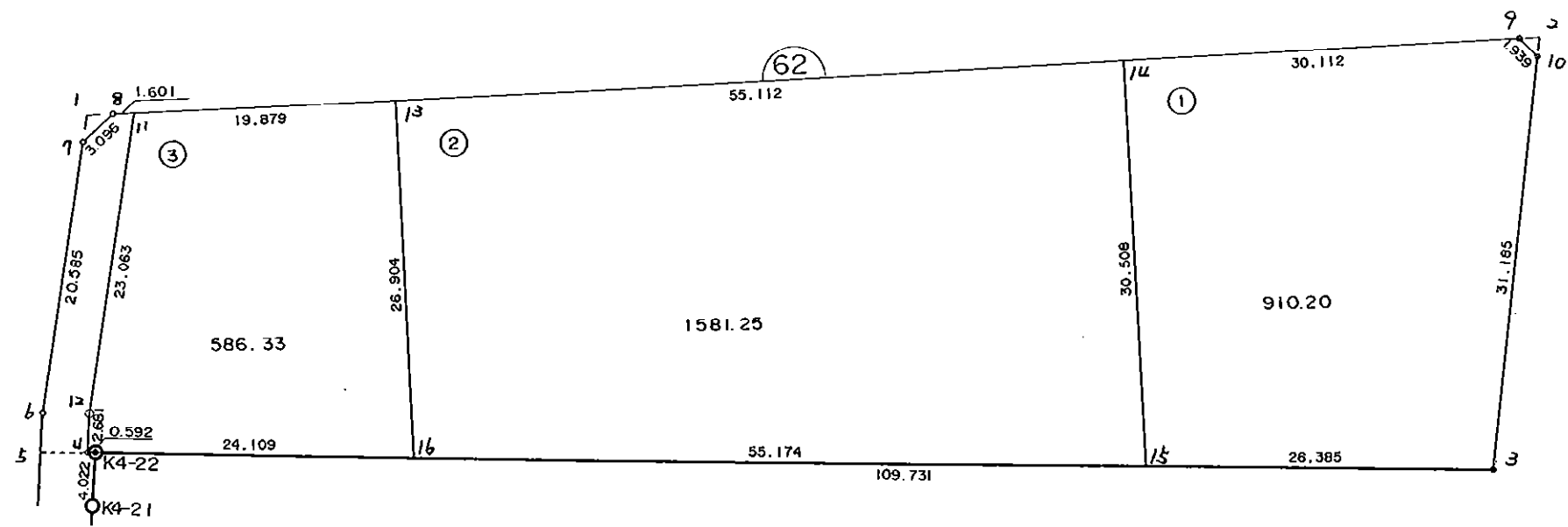


62
B
L
O
C
K

6 2 B L O C K



* * * 各筆面積 集計表 * * *

街区名・筆名	各筆面積	隅切面積
62 BLOCK	3165.52	
1 LOT	910.20	
2 LOT	1581.25	
3 LOT	586.33	
入口	87.70	
1 突き		1.96
2 突き		1.10
合計 =	3165.48	3.06

* * * * * 各 筆 面 積 計 算 書 * * * * *

62 BLOCK

点 名	X	Y	(X-X0)*(YN-1-Y0)	(XN-1-X0)*(Y-Y0)
X0-Y0	- 151100.000	- 39200.000		
62-7	- 151115.286	- 39373.520		
62-8	- 151113.092	- 39371.336	+ 2271.723840	+ 2619.042096
62-9	- 151103.150	- 39265.095	+ 539.708400	+ 852.223740
62-10	- 151104.488	- 39263.692	+ 292.146360	+ 200.629800
62-3	- 151135.596	- 39265.891	+ 2267.180432	+ 295.718808
K4-22	- 151138.550	- 39371.518	+ 2540.098050	+ 6105.354728
62-4	- 151138.563	- 39372.110	+ 6614.248634	+ 6634.840500
62-5	- 151138.640	- 39375.613	+ 6650.330400	+ 6772.164119
62-6	- 151135.764	- 39375.617	+ 6280.623332	+ 6785.840880
62-7	- 151115.286	- 39373.520	+ 2684.481462	+ 6205.769280
			+ 30140.540910	+ 36471.583951
		倍面積	= 6331.043041	
		面積	= 3165.521520	

1 LOT

点 名	X	Y	(X-X0)*(YN-1-Y0)	(XN-1-X0)*(Y-Y0)
X0-Y0	- 151100.000	- 39200.000		
62-14	- 151105.956	- 39295.076		
62-9	- 151103.150	- 39265.095	+ 299.489400	+ 387.705820
62-10	- 151104.488	- 39263.692	+ 292.146360	+ 200.629800
62-3	- 151135.596	- 39265.891	+ 2267.180432	+ 295.718808
62-15	- 151136.334	- 39292.266	+ 2394.083594	+ 3284.300536
62-14	- 151105.956	- 39295.076	+ 549.536296	+ 3454.491384
			+ 5802.436082	+ 7622.846348
		倍面積	= 1820.410266	
		面積	= 910.205133	

2 LOT

点 名	X	Y	(X-X0)*(YN-1-Y0)	(XN-1-X0)*(Y-Y0)
X0-Y0	- 151100.000	- 39200.000		
62-13	- 151111.091	- 39349.949		
62-14	- 151105.956	- 39295.076	+ 893.096244	+ 1054.487916
62-15	- 151136.334	- 39292.266	+ 3454.491384	+ 549.536296
62-16	- 151137.876	- 39347.418	+ 3494.667016	+ 5356.285612
62-13	- 151111.091	- 39349.949	+ 1635.013038	+ 5679.468324
			+ 9477.267682	+ 12639.778148
		倍面積	= 3162.510466	
		面積	= 1581.255233	

* * * * * 各 筆 面 積 計 算 書 * * * * *

3 LOT

点 名	X	Y	(X-X0)*(YN-1-Y0)	(XN-1-X0)*(Y-Y0)
X0-Y0	- 151100.000	- 39300.000		
62-11	- 151112.943	- 39369.742		
62-13	- 151111.091	- 39349.949	+ 773.508522	+ 646.489907
62-16	- 151137.876	- 39347.418	+ 1891.868324	+ 525.913038
K4-22	- 151138.550	- 39371.518	+ 1827.963900	+ 2708.815768
62-4	- 151138.563	- 39372.110	+ 2757.948634	+ 2779.840500
62-12	- 151135.882	- 39372.126	+ 2587.451020	+ 2781.394938
62-11	- 151112.943	- 39369.742	+ 933.526818	+ 2502.482444
			+ 10772.267218	+ 11944.936595
		倍面積	= 1172.669377	
		面積	= 586.334688	

240

点 名	X	Y	(X-X0)*(YN-1-Y0)	(XN-1-X0)*(Y-Y0)
X0-Y0	- 151100.000	- 39300.000		
62-4	- 151138.563	- 39372.110		
62-5	- 151138.640	- 39375.613	+ 2786.330400	+ 2915.864119
62-6	- 151135.764	- 39375.617	+ 2704.223332	+ 2921.840880
62-7	- 151115.286	- 39373.520	+ 1155.881462	+ 2629.369280
62-8	- 151113.092	- 39371.336	+ 962.523840	+ 1090.442096
62-11	- 151112.943	- 39369.742	+ 923.301848	+ 913.062264
62-12	- 151135.882	- 39372.126	+ 2502.482444	+ 933.526818
62-4	- 151138.563	- 39372.110	+ 2781.394938	+ 2587.451020
			+ 13816.138264	+ 13991.556477
		倍面積	= 175.418213	
		面積	= 87.709106	

1 33キリ

点 名	X	Y	(X-X0)*(YN-1-Y0)	(XN-1-X0)*(Y-Y0)
X0-Y0	- 151100.000	- 39300.000		
62-1	- 151113.277	- 39373.314		
62-7	- 151115.286	- 39373.520	+ 1120.677804	+ 976.125040
62-8	- 151113.092	- 39371.336	+ 962.523840	+ 1090.442096
62-1	- 151113.277	- 39373.314	+ 947.128072	+ 959.826888
			+ 3030.329716	+ 3026.394024
		倍面積	= 3.935692	
		面積	= 1.967846	

2 33キリ

点 名	X	Y	(X-X0)*(YN-1-Y0)	(XN-1-X0)*(Y-Y0)
X0-Y0	- 151100.000	- 39200.000		
62-2	- 151103.009	- 39263.587		
62-9	- 151103.150	- 39265.095	+ 200.299050	+ 195.870855

* * * * * 各 筆 面 積 計 算 書 * * * * *

点 名	X	Y	(X-X0)*(YN-1-Y0)	(XN-1-X0)*(Y-Y0)
62-10	- 151104.488	- 39263.692	+ 292.146360	+ 200.629800
62-2	- 151103.009	- 39263.587	+ 191.649228	+ 285.378456
			+ 684.094638	+ 681.879111
		倍面積	= 2.215527	
		面積	= 1.107763	