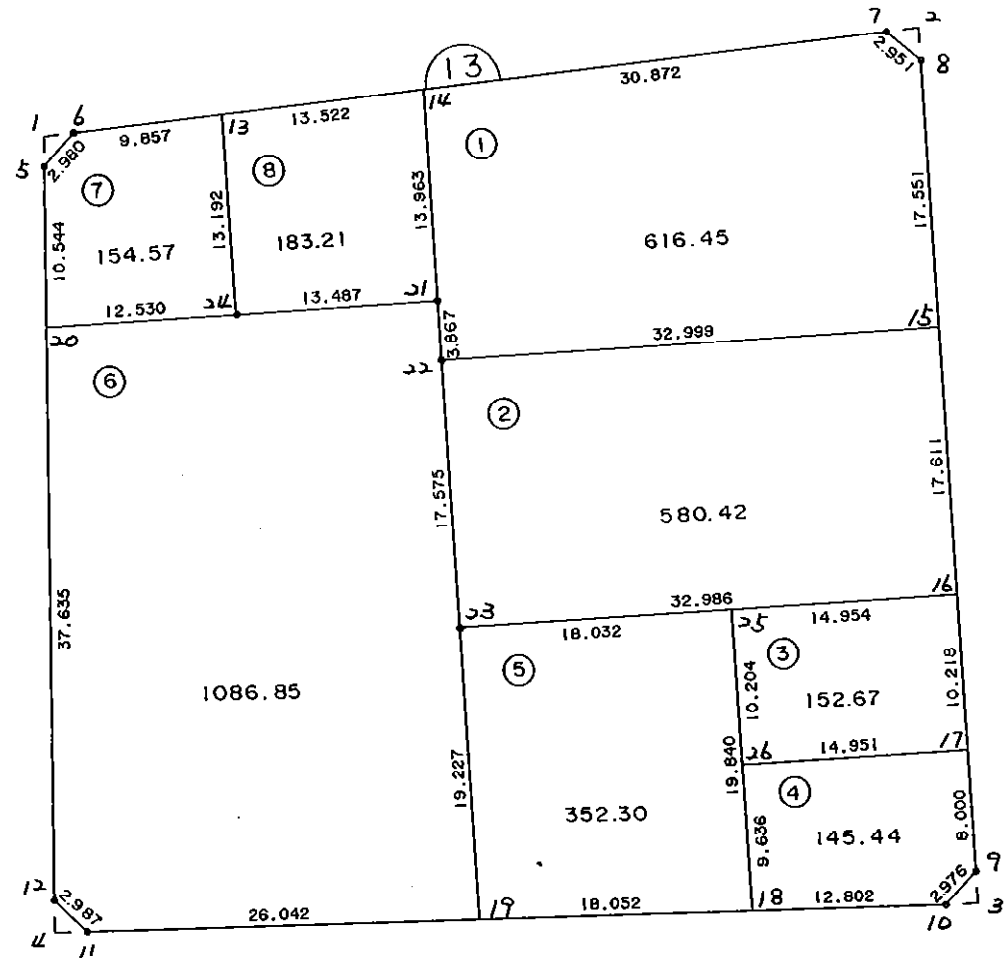


13
B
L
O
C
K

1 3 B L O C K



* * * 各筆面積 集計表 * * *

街区名・筆名	各筆面積	隅切面積
13 BLOCK	3271.93	
1 LOT	616.45	
2 LOT	580.42	
3 LOT	152.67	
4 LOT	145.44	
5 LOT	352.30	
6 LOT	1086.85	
7 LOT	154.57	
8 LOT	183.21	
1 ｽﾏｯﾄﾞ		1.98
2 ｽﾏｯﾄﾞ		2.30
3 ｽﾏｯﾄﾞ		2.29
4 ｽﾏｯﾄﾞ		2.27
合計 =	3271.91	8.84

* * * * * 各 筆 面 積 計 算 書 * * * * *

13 BLOCK

点 名	X	Y	(X-X0)*(Yn-1-Y0)	(Xn-1-X0)*(Y-Y0)
X0·Y0	- 150700.000	- 38600.000		
13-5	- 150745.943	- 38690.839		
13-6	- 150743.597	- 38689.002	+ 3960.307883	+ 4089.018886
13-7	- 150733.821	- 38635.639	+ 3010.136642	+ 1553.753483
13-8	- 150735.552	- 38633.249	+ 1267.037728	+ 1124.514429
13-9	- 150788.518	- 38626.614	+ 2943.134982	+ 946.180928
13-10	- 150790.824	- 38628.495	+ 2417.189936	+ 2522.320410
13-11	- 150795.930	- 38685.162	+ 2733.525350	+ 7734.753488
13-12	- 150794.002	- 38687.443	+ 8005.398324	+ 8388.406990
13-5	- 150745.943	- 38690.839	+ 4017.393749	+ 8539.047678
			+ 28354.124594	+ 34897.996292
		倍面積	= 6543.871698	
		面積	= 3271.935849	

1 LOT

点 名	X	Y	(X-X0)*(Yn-1-Y0)	(Xn-1-X0)*(Y-Y0)
X0·Y0	- 150700.000	- 38600.000		
13-14	- 150739.384	- 38666.005		
13-7	- 150733.821	- 38635.639	+ 2232.355105	+ 1403.606376
13-8	- 150735.552	- 38633.249	+ 1267.037728	+ 1124.514429
13-15	- 150752.967	- 38631.067	+ 1761.099783	+ 1104.493984
13-22	- 150757.078	- 38663.809	+ 1773.242226	+ 3379.771303
13-21	- 150753.240	- 38664.279	+ 3397.191160	+ 3668.916762
13-14	- 150739.384	- 38666.005	+ 2531.564136	+ 3514.106200
			+ 12962.490138	+ 14195.409054
		倍面積	= 1232.918916	
		面積	= 616.459458	

2 LOT

点 名	X	Y	(X-X0)*(Yn-1-Y0)	(Xn-1-X0)*(Y-Y0)
X0·Y0	- 150700.000	- 38600.000		
13-15	- 150752.967	- 38631.067		
13-16	- 150770.441	- 38628.878	+ 2188.390547	+ 1529.581026
13-23	- 150774.515	- 38661.611	+ 2151.844170	+ 4339.940451
13-22	- 150757.078	- 38663.809	+ 3516.632658	+ 4754.727635
13-15	- 150752.967	- 38631.067	+ 3379.771303	+ 1773.242226
			+ 11236.638678	+ 12397.491338
		倍面積	= 1160.852660	
		面積	= 580.426330	

* * * * * 各 筆 面 積 計 算 書 * * * * *

3 LOT

点 名	X	Y	(X-X0)*(YN-1-Y0)	(XN-1-X0)*(Y-Y0)
X0·Y0	- 150700.000	- 38600.000		
13-16	- 150770.441	- 38628.878		
13-17	- 150780.580	- 38627.608	+ 2326.989240	+ 1944.735128
13-26	- 150782.412	- 38642.446	+ 2275.230496	+ 3420.298680
13-25	- 150772.288	- 38643.718	+ 3068.336448	+ 3602.887816
13-16	- 150770.441	- 38628.878	+ 3079.539638	+ 2087.532864
			+ 10750.095822	+ 11055.454488
		倍面積	= 305.358666	
		面積	= 152.679333	

4 LOT

点 名	X	Y	(X-X0)*(YN-1-Y0)	(XN-1-X0)*(Y-Y0)
X0·Y0	- 150700.000	- 38600.000		
13-17	- 150780.580	- 38627.608		
13-9	- 150788.518	- 38626.614	+ 2443.804944	+ 2144.556120
13-10	- 150790.824	- 38628.495	+ 2417.189936	+ 2522.320410
13-18	- 150791.973	- 38641.245	+ 2620.770635	+ 3746.035880
13-26	- 150782.412	- 38642.446	+ 3399.082940	+ 3903.885958
13-17	- 150780.580	- 38627.608	+ 3420.298680	+ 2275.230496
			+ 14301.147135	+ 14592.028864
		倍面積	= 290.881729	
		面積	= 145.440864	

5 LOT

点 名	X	Y	(X-X0)*(YN-1-Y0)	(XN-1-X0)*(Y-Y0)
X0·Y0	- 150700.000	- 38600.000		
13-18	- 150791.973	- 38641.245		
13-19	- 150793.593	- 38659.225	+ 3860.243285	+ 5447.100925
13-23	- 150774.515	- 38661.611	+ 4413.150875	+ 5766.358323
13-25	- 150772.288	- 38643.718	+ 4453.735968	+ 3257.646770
13-18	- 150791.973	- 38641.245	+ 4020.875614	+ 2981.518560
			+ 16748.005742	+ 17452.624578
		倍面積	= 704.618836	
		面積	= 352.309418	

6 LOT

点 名	X	Y	(X-X0)*(YN-1-Y0)	(XN-1-X0)*(Y-Y0)
X0·Y0	- 150700.000	- 38600.000		
13-19	- 150793.593	- 38659.225		
13-11	- 150795.930	- 38685.162	+ 5681.454250	+ 7970.567066

* * * * * 各 筆 面 積 計 算 書 * * * * *

点 名	X	Y	(X-X0)*(YN-1-Y0)	(XN-1-X0)*(Y-Y0)
13-12	- 150794.002	- 38687.443	+ 8005.398324	+ 8388.406990
13-20	- 150756.461	- 38690.096	+ 4937.119223	+ 8469.204192
13-24	- 150754.910	- 38677.662	+ 4947.171360	+ 4384.874182
13-21	- 150753.240	- 38664.279	+ 4134.724880	+ 3529.559890
13-22	- 150757.078	- 38663.809	+ 3668.916762	+ 3397.191160
13-23	- 150774.515	- 38661.611	+ 4754.727635	+ 3516.632658
13-19	- 150793.593	- 38659.225	+ 5766.358323	+ 4413.150875
			+ 41895.870757	+ 44069.587013
		倍面積	= 2173.716256	
		面積	= 1086.858128	

7 LOT

点 名	X	Y	(X-X0)*(YN-1-Y0)	(XN-1-X0)*(Y-Y0)
X0-Y0	- 150700.000	- 38600.000		
13-20	- 150756.461	- 38690.096		
13-5	- 150745.943	- 38690.839	+ 4139.280528	+ 5128.860779
13-6	- 150743.597	- 38689.002	+ 3960.307883	+ 4089.018886
13-13	- 150741.821	- 38679.306	+ 3722.152642	+ 3457.503682
13-24	- 150754.910	- 38677.662	+ 4354.692460	+ 3247.902502
13-20	- 150756.461	- 38690.096	+ 4384.874182	+ 4947.171360
			+ 20561.307695	+ 20870.457209
		倍面積	= 309.149514	
		面積	= 154.574757	

8 LOT

点 名	X	Y	(X-X0)*(YN-1-Y0)	(XN-1-X0)*(Y-Y0)
X0-Y0	- 150700.000	- 38600.000		
13-13	- 150741.821	- 38679.306		
13-14	- 150739.384	- 38666.005	+ 3123.387504	+ 2760.395105
13-21	- 150753.240	- 38664.279	+ 3514.106200	+ 2531.564136
13-24	- 150754.910	- 38677.662	+ 3529.559890	+ 4134.724880
13-13	- 150741.821	- 38679.306	+ 3247.902502	+ 4354.692460
			+ 13414.956096	+ 13781.376581
		倍面積	= 366.420485	
		面積	= 183.210242	

1 区切り

点 名	X	Y	(X-X0)*(YN-1-Y0)	(XN-1-X0)*(Y-Y0)
X0-Y0	- 150700.000	- 38600.000		
13-1	- 150743.959	- 38690.979		
13-5	- 150745.943	- 38690.839	+ 4179.848197	+ 3993.191601
13-6	- 150743.597	- 38689.002	+ 3960.307883	+ 4089.018886

* * * * * 各 筆 面 積 計 算 書 * * * * *

点 名	X	Y	(X-X0)*(YN-1-Y0)	(XN-1-X0)*(Y-Y0)
13-1	- 150743.959	- 38690.979	+ 3912.438918	+ 3966.411463
			+ 12052.594998	+ 12048.621950
		倍面積	= 3.973048	
		面積	= 1.986524	

2 区

点 名	X	Y	(X-X0)*(YN-1-Y0)	(XN-1-X0)*(Y-Y0)
X0・Y0	- 150700.000	- 38600.000		
13-2	- 150733.432	- 38633.514		
13-7	- 150733.821	- 38635.639	+ 1133.476994	+ 1191.483048
13-8	- 150735.552	- 38633.249	+ 1267.037728	+ 1124.514429
13-2	- 150733.432	- 38633.514	+ 1111.580568	+ 1191.489728
			+ 3512.095290	+ 3507.487205
		倍面積	= 4.608085	
		面積	= 2.304042	

3 区

点 名	X	Y	(X-X0)*(YN-1-Y0)	(XN-1-X0)*(Y-Y0)
X0・Y0	- 150700.000	- 38600.000		
13-3	- 150790.631	- 38626.349		
13-9	- 150788.518	- 38626.614	+ 2332.360782	+ 2412.053434
13-10	- 150790.824	- 38628.495	+ 2417.189936	+ 2522.320410
13-3	- 150790.631	- 38626.349	+ 2582.530345	+ 2393.121576
			+ 7332.081063	+ 7327.495420
		倍面積	= 4.585643	
		面積	= 2.292821	

4 区

点 名	X	Y	(X-X0)*(YN-1-Y0)	(XN-1-X0)*(Y-Y0)
X0・Y0	- 150700.000	- 38600.000		
13-4	- 150796.122	- 38687.293		
13-11	- 150795.930	- 38685.162	+ 8374.017490	+ 8185.941764
13-12	- 150794.002	- 38687.443	+ 8005.398324	+ 8388.406990
13-4	- 150796.122	- 38687.293	+ 8405.196046	+ 8205.716586
			+ 24784.611860	+ 24780.065340
		倍面積	= 4.546520	
		面積	= 2.273260	