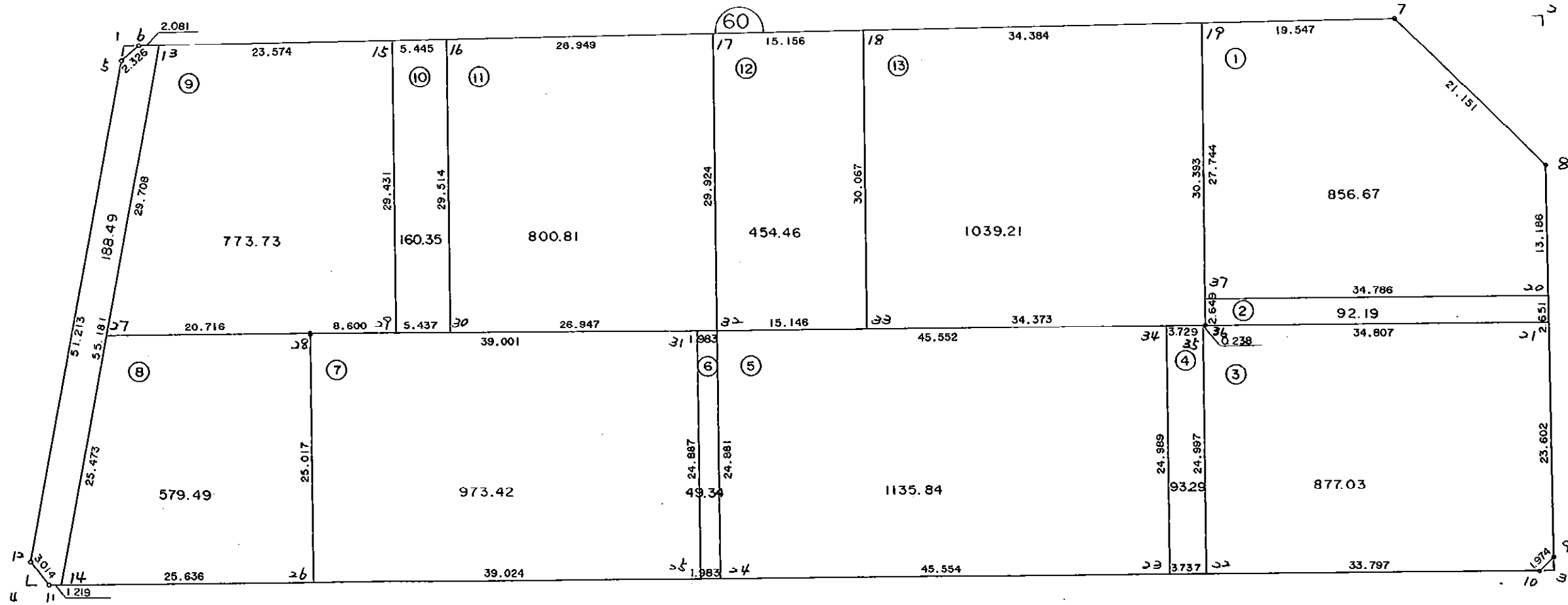


6 0 B L O C K



\* \* \* 各筆面積 集計表 \* \* \*

街区名・筆名	各筆面積	隅切面積
60 BLOCK	8074.39	
1 LOT	856.67	
2 LOT	92.19	
3 LOT	877.03	
4 LOT	93.29	
5 LOT	1135.84	
6 LOT	49.34	
7 LOT	973.42	
8 LOT	579.49	
9 LOT	773.73	
10 LOT	160.35	
11 LOT	800.81	
12 LOT	454.46	
13 LOT	1039.21	
ｽｲｯﾌﾟ	188.49	
1 ｽｽﾞｷﾘ		1.09
2 ｽｽﾞｷﾘ		112.32
3 ｽｽﾞｷﾘ		0.98
4 ｽｽﾞｷﾘ		2.76
合計 =	8074.32	117.15

\* \* \* \* \* 各 筆 面 積 計 算 書 \* \* \* \* \*

60 BLOCK

点 名	X	Y	(X-X0)*(YN-1-Y0)	(XN-1-X0)*(Y-Y0)
X0·Y0	- 151000.000	- 39200.000		
60-5	- 151051.840	- 39367.078		
60-6	- 151050.175	- 39365.454	+ 8383.138650	+ 8577.135360
60-7	- 151036.733	- 39239.031	+ 6077.621782	+ 1958.380425
60-8	- 151050.041	- 39222.591	+ 1953.150271	+ 829.835203
60-9	- 151089.276	- 39218.588	+ 2016.834116	+ 930.162108
60-10	- 151090.794	- 39219.850	+ 1687.678872	+ 1772.128600
60-11	- 151104.972	- 39370.132	+ 2083.694200	+ 15446.964808
60-12	- 151102.795	- 39372.217	+ 17488.718940	+ 18077.962924
60-5	- 151051.840	- 39367.078	+ 8927.729280	+ 17174.783010
			+ 48618.566111	+ 64767.352438
		倍面積	= 16148.786327	
		面積	= 8074.393163	

1 LOT

点 名	X	Y	(X-X0)*(YN-1-Y0)	(XN-1-X0)*(Y-Y0)
X0·Y0	- 151000.000	- 39200.000		
60-19	- 151038.800	- 39258.468		
60-7	- 151036.733	- 39239.031	+ 2147.705044	+ 1514.402800
60-8	- 151050.041	- 39222.591	+ 1953.150271	+ 829.835203
60-20	- 151063.159	- 39221.253	+ 1426.824969	+ 1063.521373
60-37	- 151066.424	- 39255.885	+ 1411.709272	+ 3529.640715
60-19	- 151038.800	- 39258.468	+ 2168.338000	+ 3883.678432
			+ 9107.727556	+ 10821.078523
		倍面積	= 1713.350967	
		面積	= 856.675483	

2 LOT

点 名	X	Y	(X-X0)*(YN-1-Y0)	(XN-1-X0)*(Y-Y0)
X0·Y0	- 151000.000	- 39200.000		
60-20	- 151063.159	- 39221.253		
60-21	- 151065.796	- 39220.984	+ 1398.362388	+ 1325.328456
60-36	- 151069.061	- 39255.638	+ 1449.176024	+ 3660.757848
60-37	- 151066.424	- 39255.885	+ 3695.698512	+ 3859.473985
60-20	- 151063.159	- 39221.253	+ 3529.640715	+ 1411.709272
			+ 10072.877639	+ 10257.269561
		倍面積	= 184.391922	
		面積	= 92.195961	

3 LOT

点 名	X	Y	(X-X0)*(YN-1-Y0)	(XN-1-X0)*(Y-Y0)
X0·Y0	- 151000.000	- 39200.000		
60-21	- 151065.796	- 39220.984		
60-9	- 151089.276	- 39218.588	+ 1873.367584	+ 1223.016048

\* \* \* \* \* 各 筆 面 積 計 算 書 \* \* \* \* \*

点 名	X	Y	(X-X0)*(YN-1-Y0)	(XN-1-X0)*(Y-Y0)
60-10	- 151090.794	- 39219.850	+ 1687.678872	+ 1772.128600
60-22	- 151093.968	- 39253.498	+ 1865.264800	+ 4857.297412
60-35	- 151069.084	- 39255.875	+ 3695.855832	+ 5250.462000
60-36	- 151069.061	- 39255.638	+ 3858.783375	+ 3843.695592
60-21	- 151065.796	- 39220.984	+ 3660.757848	+ 1449.176024
			+ 16641.708311	+ 18395.775676
		倍面積	= 1754.067365	
		面積	= 877.033682	

4 LOT

点 名	X	Y	(X-X0)*(YN-1-Y0)	(XN-1-X0)*(Y-Y0)
X0-Y0	- 151000.000	- 39200.000		
60-22	- 151093.968	- 39253.498		
60-23	- 151094.319	- 39257.218	+ 5045.877862	+ 5376.661024
60-34	- 151069.443	- 39259.587	+ 3973.389574	+ 5620.186253
60-35	- 151069.084	- 39255.875	+ 4116.508308	+ 3880.127625
60-22	- 151093.968	- 39253.498	+ 5250.462000	+ 3695.855832
			+ 18386.237744	+ 18572.830734
		倍面積	= 186.592990	
		面積	= 93.296495	

5 LOT

点 名	X	Y	(X-X0)*(YN-1-Y0)	(XN-1-X0)*(Y-Y0)
X0-Y0	- 151000.000	- 39200.000		
60-23	- 151094.319	- 39257.218		
60-24	- 151098.599	- 39302.570	+ 5641.637582	+ 9674.299830
60-32	- 151073.830	- 39304.927	+ 7572.743100	+ 10345.697273
60-34	- 151069.443	- 39259.587	+ 7286.445661	+ 4399.308210
60-23	- 151094.319	- 39257.218	+ 5620.186253	+ 3973.389574
			+ 26121.012596	+ 28392.694887
		倍面積	= 2271.682291	
		面積	= 1135.841145	

6 LOT

点 名	X	Y	(X-X0)*(YN-1-Y0)	(XN-1-X0)*(Y-Y0)
X0-Y0	- 151000.000	- 39300.000		
60-24	- 151098.599	- 39302.570		
60-25	- 151098.785	- 39304.544	+ 253.877450	+ 448.033856
60-31	- 151074.010	- 39306.902	+ 336.301440	+ 681.814070
60-32	- 151073.830	- 39304.927	+ 509.574660	+ 364.647270
60-24	- 151098.599	- 39302.570	+ 485.797273	+ 189.743100
			+ 1585.550823	+ 1684.238296
		倍面積	= 98.687473	
		面積	= 49.343736	

\* \* \* \* \* 各 筆 面 積 計 算 書 \* \* \* \* \*

7 LOT

点 名	X	Y	(X-X0)*(YN-1-Y0)	(XN-1-X0)*(Y-Y0)
X0-Y0	- 151000.000	- 39300.000		
60-25	- 151098.785	- 39304.544		
60-26	- 151102.450	- 39343.395	+ 465.532800	+ 4286.775075
60-28	- 151077.543	- 39345.742	+ 3364.978485	+ 4686.267900
60-31	- 151074.010	- 39306.902	+ 3385.365420	+ 535.201786
60-25	- 151098.785	- 39304.544	+ 681.814070	+ 336.301440
			+ 7897.690775	+ 9844.546201
		倍面積	= 1946.855426	
		面積	= 973.427713	

8 LOT

点 名	X	Y	(X-X0)*(YN-1-Y0)	(XN-1-X0)*(Y-Y0)
X0-Y0	- 151000.000	- 39300.000		
60-26	- 151102.450	- 39343.395		
60-14	- 151104.858	- 39368.918	+ 4550.312910	+ 7060.649100
60-27	- 151079.513	- 39366.364	+ 5479.876934	+ 6958.796312
60-28	- 151077.543	- 39345.742	+ 5146.063652	+ 3637.083646
60-26	- 151102.450	- 39343.395	+ 4686.267900	+ 3364.978485
			+ 19862.521396	+ 21021.507543
		倍面積	= 1158.986147	
		面積	= 579.493073	

9 LOT

点 名	X	Y	(X-X0)*(YN-1-Y0)	(XN-1-X0)*(Y-Y0)
X0-Y0	- 151000.000	- 39300.000		
60-27	- 151079.513	- 39366.364		
60-13	- 151049.955	- 39363.385	+ 3315.213620	+ 5039.931505
60-15	- 151047.463	- 39339.943	+ 3008.442255	+ 1995.352565
60-29	- 151076.764	- 39337.177	+ 3066.184452	+ 1764.531951
60-28	- 151077.543	- 39345.742	+ 2882.816111	+ 3511.338888
60-27	- 151079.513	- 39366.364	+ 3637.083646	+ 5146.063652
			+ 15909.740084	+ 17457.218561
		倍面積	= 1547.478477	
		面積	= 773.739238	

10 LOT

点 名	X	Y	(X-X0)*(YN-1-Y0)	(XN-1-X0)*(Y-Y0)
X0-Y0	- 151000.000	- 39300.000		
60-15	- 151047.463	- 39339.943		
60-16	- 151046.887	- 39334.529	+ 1872.807441	+ 1638.849927

\* \* \* \* \* 各 筆 面 積 計 算 書 \* \* \* \* \*

点 名	X	Y	(X-X0)*(YN-1-Y0)	(XN-1-X0)*(Y-Y0)
60-30	- 151076.271	- 39331.762	+ 2633.561359	+ 1489.224894
60-29	- 151076.764	- 39337.177	+ 2438.178168	+ 2835.526967
60-15	- 151047.463	- 39339.943	+ 1764.531951	+ 3066.184452
			+ 8709.078919	+ 9029.786240
		倍面積	= 320.707321	
		面積	= 160.353660	

11 LOT

点 名	X	Y	(X-X0)*(YN-1-Y0)	(XN-1-X0)*(Y-Y0)
X0·Y0	- 151000.000	- 39300.000		
60-16	- 151046.887	- 39334.529		
60-17	- 151044.038	- 39307.731	+ 1520.588102	+ 362.483397
60-32	- 151073.830	- 39304.927	+ 570.779730	+ 216.975226
60-30	- 151076.271	- 39331.762	+ 375.787217	+ 2344.988460
60-16	- 151046.887	- 39334.529	+ 1489.224894	+ 2633.561359
			+ 3956.379943	+ 5558.008442
		倍面積	= 1601.628499	
		面積	= 800.814249	

12 LOT

点 名	X	Y	(X-X0)*(YN-1-Y0)	(XN-1-X0)*(Y-Y0)
X0·Y0	- 151000.000	- 39200.000		
60-17	- 151044.038	- 39307.731		
60-18	- 151042.435	- 39292.659	+ 4571.564985	+ 4080.517042
60-33	- 151072.371	- 39289.851	+ 6705.824489	+ 3812.827185
60-32	- 151073.830	- 39304.927	+ 6633.699330	+ 7593.671917
60-17	- 151044.038	- 39307.731	+ 4620.775226	+ 7953.779730
			+ 22531.864030	+ 23440.795874
		倍面積	= 908.931844	
		面積	= 454.465922	

13 LOT

点 名	X	Y	(X-X0)*(YN-1-Y0)	(XN-1-X0)*(Y-Y0)
X0·Y0	- 151000.000	- 39200.000		
60-18	- 151042.435	- 39292.659		
60-19	- 151038.800	- 39258.468	+ 3595.169200	+ 2481.089580
60-36	- 151069.061	- 39255.638	+ 4037.858548	+ 2158.754400
60-33	- 151072.371	- 39289.851	+ 4026.577698	+ 6205.199911
60-18	- 151042.435	- 39292.659	+ 3812.827185	+ 6705.824489
			+ 15472.432631	+ 17550.868380
		倍面積	= 2078.435749	
		面積	= 1039.217874	

\* \* \* \* \* 各 筆 面 積 計 算 書 \* \* \* \* \*

210

点 名	X	Y	(X-X0)*(YN-1-Y0)	(XN-1-X0)*(Y-Y0)
X0·Y0	- 151000.000	- 39300.000		
60-14	- 151104.858	- 39368.918		
60-11	- 151104.972	- 39370.132	+ 7234.460296	+ 7353.901256
60-12	- 151102.795	- 39372.217	+ 7209.218940	+ 7580.762924
60-5	- 151051.840	- 39367.078	+ 3743.729280	+ 6895.283010
60-6	- 151050.175	- 39365.454	+ 3365.638650	+ 3393.135360
60-13	- 151049.955	- 39363.385	+ 3269.754570	+ 3180.342375
60-14	- 151104.858	- 39368.918	+ 6646.424330	+ 3442.798690
			+ 31469.226066	+ 31846.223615
		倍面積	= 376.997549	
		面積	= 188.498774	

1 33キリ

点 名	X	Y	(X-X0)*(YN-1-Y0)	(XN-1-X0)*(Y-Y0)
X0·Y0	- 151000.000	- 39300.000		
60-1	- 151050.331	- 39366.926		
60-5	- 151051.840	- 39367.078	+ 3469.443840	+ 3376.102818
60-6	- 151050.175	- 39365.454	+ 3365.638650	+ 3393.135360
60-1	- 151050.331	- 39366.926	+ 3294.365274	+ 3358.012050
			+ 10129.447764	+ 10127.250228
		倍面積	= 2.197536	
		面積	= 1.098768	

2 33キリ

点 名	X	Y	(X-X0)*(YN-1-Y0)	(XN-1-X0)*(Y-Y0)
X0·Y0	- 151000.000	- 39200.000		
60-2	- 151035.147	- 39224.110		
60-7	- 151036.733	- 39239.031	+ 885.632630	+ 1371.822557
60-8	- 151050.041	- 39222.591	+ 1953.150271	+ 829.835203
60-2	- 151035.147	- 39224.110	+ 794.005877	+ 1206.488510
			+ 3632.788778	+ 3408.146270
		倍面積	= 224.642508	
		面積	= 112.321254	

3 33キリ

点 名	X	Y	(X-X0)*(YN-1-Y0)	(XN-1-X0)*(Y-Y0)
X0·Y0	- 151000.000	- 39200.000		
60-3	- 151090.662	- 39218.447		
60-9	- 151089.276	- 39218.588	+ 1646.874372	+ 1685.225256
60-10	- 151090.794	- 39219.850	+ 1687.678872	+ 1772.128600



\* \* \* \* \* 各 筆 面 積 計 算 書 \* \* \* \* \*

点 名	X	Y	(X-X0)*(YN-1-Y0)	(XN-1-X0)*(Y-Y0)
60-3	151090.662	39218.447	+ 1799.640700	+ 1674.876918
			+ 5134.193944	+ 5132.230774
		倍面積	= 1.963170	
		面積	= 0.981585	

4 筆目

点 名	X	Y	(X-X0)*(YN-1-Y0)	(XN-1-X0)*(Y-Y0)
X0-Y0	151100.000	39300.000		
60-4	151105.192	39372.459		
60-11	151104.972	39370.132	+ 360.266148	+ 364.125344
60-12	151102.795	39372.217	+ 196.018940	+ 359.062924
60-4	151105.192	39372.459	+ 374.950664	+ 202.522905
			+ 931.235752	+ 925.711173
		倍面積	= 5.524579	
		面積	= 2.762289	