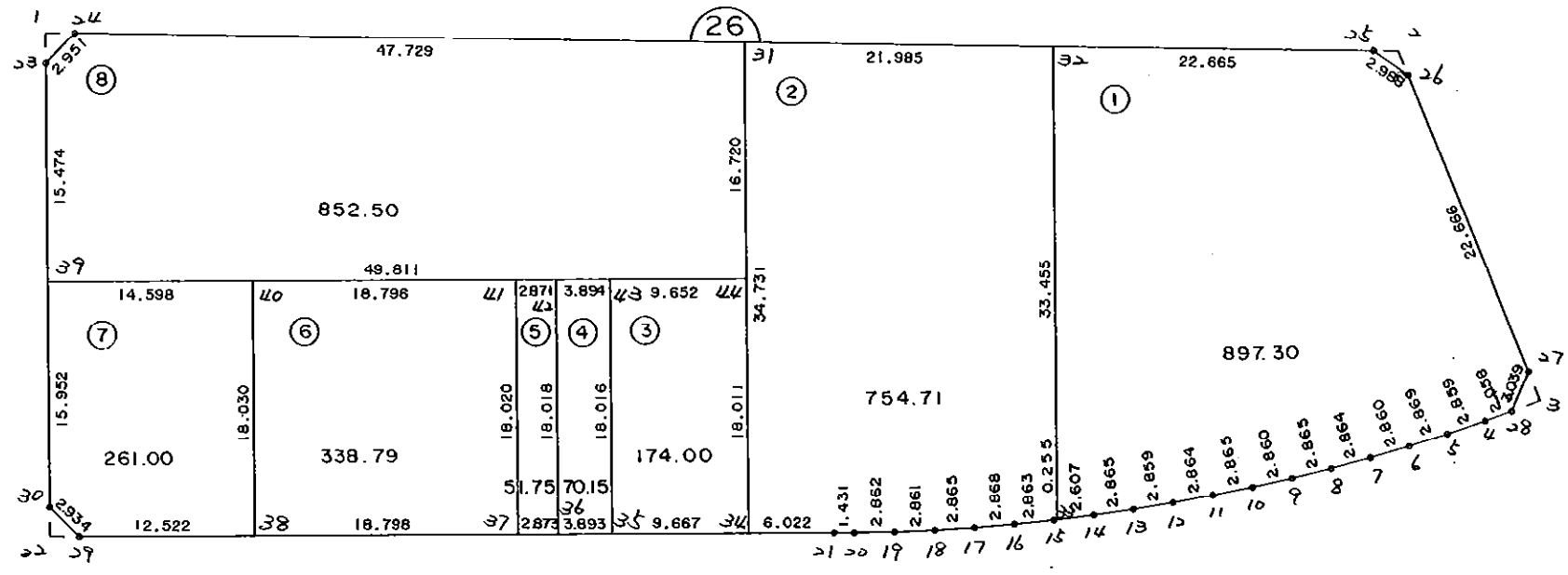


2 6 B L O C K

I



\* \* \* 各筆面積 集計表 \* \* \*

街区名・筆名	各筆面積	隅切面積
26 BLOCK	3400.25	
1 LOT	897.30	
2 LOT	754.71	
3 LOT	174.00	
4 LOT	70.15	
5 LOT	51.75	
6 LOT	338.79	
7 LOT	261.00	
8 LOT	852.50	
1 スミキリ		2.21
2 スミキリ		1.47
3 スミキリ		2.42
22 スミキリ		2.15
合計 =	3400.20	8.25

\* \* \* \* \* 各 筆 面 積 計 算 書 \* \* \* \* \*

26 BLOCK

点 名	X	Y	(X-X0)*(Y1-Y0)	(XN-1-X0)*(Y-Y0)
X0·Y0	- 150900.000	- 38600.000		
26-23	- 150927.333	- 38779.387		
26-24	- 150925.028	- 38777.544	+ 4489.697836	+ 4852.810152
26-25	- 150916.554	- 38685.555	+ 2939.063376	+ 2141.270540
26-26	- 150917.985	- 38682.932	+ 1538.706675	+ 1372.856328
26-27	- 150937.943	- 38672.189	+ 3146.688876	+ 1298.319165
26-28	- 150940.840	- 38673.108	+ 2948.198760	+ 2773.936844
26-4	- 150941.729	- 38674.964	+ 3050.723732	+ 3061.529760
26-5	- 150942.925	- 38677.561	+ 3217.829700	+ 3236.542969
26-6	- 150944.061	- 38680.195	+ 3417.415221	+ 3442.370375
26-7	- 150945.160	- 38682.835	+ 3621.606200	+ 3649.792935
26-8	- 150946.209	- 38685.500	+ 3827.722515	+ 3861.180000
26-9	- 150947.198	- 38688.189	+ 4035.429000	+ 4075.125501
26-10	- 150948.122	- 38690.896	+ 4243.831058	+ 4290.109408
26-11	- 150948.992	- 38693.626	+ 4453.176832	+ 4505.470372
26-12	- 150949.812	- 38696.370	+ 4663.698312	+ 4721.359040
26-13	- 150950.580	- 38699.124	+ 4874.394600	+ 4937.564688
26-14	- 150951.293	- 38701.899	+ 5084.367332	+ 5154.051420
26-15	- 150951.942	- 38704.686	+ 5292.837858	+ 5369.658998
26-16	- 150952.542	- 38707.485	+ 5500.411812	+ 5582.985870
26-17	- 150953.082	- 38710.302	+ 5705.518770	+ 5795.487684
26-18	- 150953.566	- 38713.126	+ 5908.436932	+ 6004.954332
26-19	- 150953.993	- 38715.955	+ 6108.012118	+ 6211.245530
26-20	- 150954.349	- 38718.795	+ 6302.038295	+ 6414.098435
26-21	- 150954.510	- 38720.217	+ 6475.515450	+ 6533.673733
26-29	- 150960.416	- 38773.666	+ 7263.030272	+ 9466.533660
26-30	- 150958.571	- 38775.947	+ 10171.791286	+ 10630.013952
26-23	- 150927.333	- 38779.387	+ 4809.159351	+ 10506.875977
			+123089.302169	+129889.817668
		倍面積	= 6800.515499	
		面積	= 3400.257749	

1 LOT

点 名	X	Y	(X-X0)*(Y1-Y0)	(XN-1-X0)*(Y-Y0)
X0·Y0	- 150900.000	- 38600.000		
26-32	- 150918.633	- 38708.124		
26-25	- 150916.554	- 38685.555	+ 1789.884696	+ 1594.146315
26-26	- 150917.985	- 38682.932	+ 1538.706675	+ 1372.856328
26-27	- 150937.943	- 38672.189	+ 3146.688876	+ 1298.319165
26-28	- 150940.840	- 38673.108	+ 2948.198760	+ 2773.936844
26-4	- 150941.729	- 38674.964	+ 3050.723732	+ 3061.529760
26-5	- 150942.925	- 38677.561	+ 3217.829700	+ 3236.542969
26-6	- 150944.061	- 38680.195	+ 3417.415221	+ 3442.370375
26-7	- 150945.160	- 38682.835	+ 3621.606200	+ 3649.792935

\* \* \* \* \* 各 筆 面 積 計 算 書 \* \* \* \* \*

点 名	X	Y	(X-X0)*(YN-1-Y0)	(XN-1-X0)*(Y-Y0)
26-8	- 150946.209	- 38685.500	+ 3827.722515	+ 3861.180000
26-9	- 150947.198	- 38688.189	+ 4035.429000	+ 4075.125501
26-10	- 150948.122	- 38690.896	+ 4243.831058	+ 4290.109408
26-11	- 150948.992	- 38693.626	+ 4453.176832	+ 4505.470372
26-12	- 150949.812	- 38696.370	+ 4663.698312	+ 4721.359040
26-13	- 150950.580	- 38699.124	+ 4874.394600	+ 4937.564688
26-14	- 150951.293	- 38701.899	+ 5084.367332	+ 5154.051420
26-33	- 150951.884	- 38704.438	+ 5286.927716	+ 5356.938334
26-32	- 150918.633	- 38708.124	+ 1945.993254	+ 5609.905616
			+ 61146.594479	+ 62941.199070
		倍面積	= 1794.604591	
		面積	= 897.302295	

2 LOT

点 名	X	Y	(X-X0)*(YN-1-Y0)	(XN-1-X0)*(Y-Y0)
X0·Y0	- 150900.000	- 38700.000		
26-33	- 150951.884	- 38704.438		
26-15	- 150951.942	- 38704.686	+ 230.518596	+ 243.128424
26-16	- 150952.542	- 38707.485	+ 246.211812	+ 388.785870
26-17	- 150953.082	- 38710.302	+ 397.318770	+ 541.287684
26-18	- 150953.566	- 38713.126	+ 551.836932	+ 696.754332
26-19	- 150953.993	- 38715.955	+ 708.712118	+ 854.645530
26-20	- 150954.349	- 38718.795	+ 867.138295	+ 1014.798435
26-21	- 150954.510	- 38720.217	+ 1024.515450	+ 1098.773733
26-34	- 150955.171	- 38726.203	+ 1115.392107	+ 1428.325530
26-31	- 150920.650	- 38730.016	+ 541.091950	+ 1656.012736
26-32	- 150918.633	- 38708.124	+ 559.288128	+ 167.760600
26-33	- 150951.884	- 38704.438	+ 421.505616	+ 82.693254
			+ 6663.529774	+ 8172.966128
		倍面積	= 1509.436354	
		面積	= 754.718177	

3 LOT

点 名	X	Y	(X-X0)*(YN-1-Y0)	(XN-1-X0)*(Y-Y0)
X0·Y0	- 150900.000	- 38700.000		
26-34	- 150955.171	- 38726.203		
26-35	- 150956.233	- 38735.812	+ 1473.473299	+ 1975.783852
26-43	- 150938.324	- 38737.775	+ 1372.459088	+ 2124.201575
26-44	- 150937.269	- 38728.181	+ 1407.836475	+ 1080.008644
26-34	- 150955.171	- 38726.203	+ 1554.773951	+ 976.559607
			+ 5808.542813	+ 6156.553678
		倍面積	= 348.010865	
		面積	= 174.005432	

\* \* \* \* \* 各 筆 面 積 計 算 書 \* \* \* \* \*

4 LOT

点 名	X	Y	(X-X0)*(YN-1-Y0)	(XN-1-X0)*(Y-Y0)
X0·Y0	- 150900.000	- 38700.000		
26-35	- 150956.233	- 38735.812		
26-36	- 150956.661	- 38739.681	+ 2029.143732	+ 2231.381673
26-42	- 150938.750	- 38741.646	+ 1537.638750	+ 2359.704006
26-43	- 150938.324	- 38737.775	+ 1596.041304	+ 1463.781250
26-35	- 150956.233	- 38735.812	+ 2124.201575	+ 1372.459088
			+ 7287.025361	+ 7427.326017
		倍面積	= 140.300656	
		面積	= 70.150328	

5 LOT

点 名	X	Y	(X-X0)*(YN-1-Y0)	(XN-1-X0)*(Y-Y0)
X0·Y0	- 150900.000	- 38700.000		
26-36	- 150956.661	- 38739.681		
26-37	- 150956.977	- 38742.537	+ 2260.904337	+ 2410.188957
26-41	- 150939.064	- 38744.500	+ 1661.665368	+ 2535.476500
26-42	- 150938.750	- 38741.646	+ 1724.375000	+ 1626.859344
26-36	- 150956.661	- 38739.681	+ 2359.704006	+ 1537.638750
			+ 8006.648711	+ 8110.163551
		倍面積	= 103.514840	
		面積	= 51.757420	

6 LOT

点 名	X	Y	(X-X0)*(YN-1-Y0)	(XN-1-X0)*(Y-Y0)
X0·Y0	- 150900.000	- 38700.000		
26-37	- 150956.977	- 38742.537		
26-38	- 150959.041	- 38761.220	+ 2511.427017	+ 3488.131940
26-40	- 150941.118	- 38763.182	+ 2517.243960	+ 3730.328462
26-41	- 150939.064	- 38744.500	+ 2468.141648	+ 1829.751000
26-37	- 150956.977	- 38742.537	+ 2535.476500	+ 1661.665368
			+ 10032.289125	+ 10709.876770
		倍面積	= 677.587645	
		面積	= 338.793822	

7 LOT

点 名	X	Y	(X-X0)*(YN-1-Y0)	(XN-1-X0)*(Y-Y0)
X0·Y0	- 150900.000	- 38700.000		
26-38	- 150959.041	- 38761.220		
26-29	- 150960.416	- 38773.666	+ 3698.667520	+ 4349.314306
26-30	- 150958.571	- 38775.947	+ 4314.691286	+ 4588.413952

\* \* \* \* \* 各 筆 面 積 計 算 書 \* \* \* \* \*

点 名	X	Y	(X-X0)*(YN-1-Y0)	(XN-1-X0)*(Y-Y0)
26-39	- 150942.714	- 38777.693	+ 3244.000158	+ 4550.556703
26-40	- 150941.118	- 38763.182	+ 3194.580774	+ 2698.755948
26-38	- 150959.041	- 38761.220	+ 3730.328462	+ 2517.243960
			+ 18182.268200	+ 18704.284869
		倍面積	= 522.016669	
		面積	= 261.008334	

8 LOT

点 名	X	Y	(X-X0)*(YN-1-Y0)	(XN-1-X0)*(Y-Y0)
X0-Y0	- 150900.000	- 38700.000		
26-39	- 150942.714	- 38777.693		
26-23	- 150927.333	- 38779.387	+ 2123.582769	+ 3390.936318
26-24	- 150925.028	- 38777.544	+ 1986.897836	+ 2119.510152
26-31	- 150920.650	- 38730.016	+ 1601.283600	+ 751.240448
26-44	- 150937.269	- 38728.181	+ 1118.666304	+ 581.937650
26-39	- 150942.714	- 38777.693	+ 1203.723234	+ 2895.540417
			+ 8034.153743	+ 9739.164985
		倍面積	= 1705.011242	
		面積	= 852.505621	

1 スキリ

点 名	X	Y	(X-X0)*(YN-1-Y0)	(XN-1-X0)*(Y-Y0)
X0-Y0	- 150900.000	- 38700.000		
26-1	- 150925.219	- 38779.620		
26-23	- 150927.333	- 38779.387	+ 2176.253460	+ 2002.060753
26-24	- 150925.028	- 38777.544	+ 1986.897836	+ 2119.510152
26-1	- 150925.219	- 38779.620	+ 1955.582136	+ 1992.729360
			+ 6118.733432	+ 6114.300265
		倍面積	= 4.433167	
		面積	= 2.216583	

2 スキリ

点 名	X	Y	(X-X0)*(YN-1-Y0)	(XN-1-X0)*(Y-Y0)
X0-Y0	- 150900.000	- 38600.000		
26-2	- 150916.391	- 38683.790		
26-25	- 150916.554	- 38685.555	+ 1387.059660	+ 1402.332005
26-26	- 150917.985	- 38682.932	+ 1538.706675	+ 1372.856328
26-2	- 150916.391	- 38683.790	+ 1359.338412	+ 1506.963150
			+ 4285.104747	+ 4282.151483
		倍面積	= 2.953264	
		面積	= 1.476632	

\* \* \* \* \* 各 筆 面 積 計 算 書 \* \* \* \* \*

3 区判

点 名	X	Y	(X-X0)*(YN-1-Y0)	(XN-1-X0)*(Y-Y0)
X0-Y0	- 150900.000	- 38600.000		
26-3	- 150939.897	- 38671.137		
26-27	- 150937.943	- 38672.189	+ 2699.151191	+ 2880.124533
26-28	- 150940.840	- 38673.108	+ 2948.198760	+ 2773.936844
26-3	- 150939.897	- 38671.137	+ 2916.789876	+ 2905.235080
			+ 8564.139827	+ 8559.296457
		倍面積	= 4.843370	
		面積	= 2.421685	

22 区判

点 名	X	Y	(X-X0)*(YN-1-Y0)	(XN-1-X0)*(Y-Y0)
X0-Y0	- 150900.000	- 38700.000		
26-22	- 150960.643	- 38775.719		
26-29	- 150960.416	- 38773.666	+ 4574.639104	+ 4467.327238
26-30	- 150958.571	- 38775.947	+ 4314.691286	+ 4588.413952
26-22	- 150960.643	- 38775.719	+ 4605.653921	+ 4434.937549
			+ 13494.984311	+ 13490.678739
		倍面積	= 4.305572	
		面積	= 2.152786	