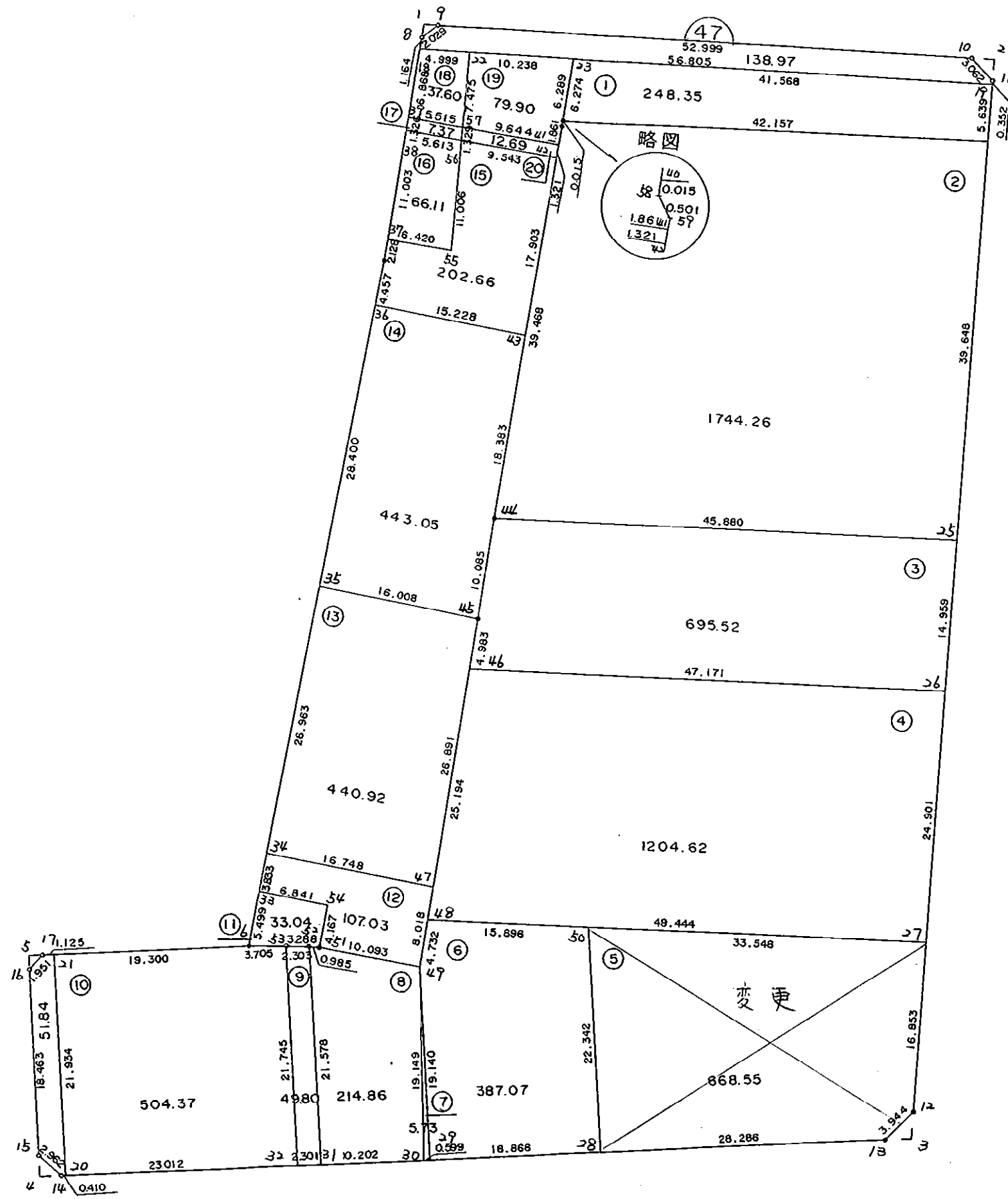


4 7 B L O C K



* * * 各筆面積 集計表 * * *

街区名・筆名	各筆面積	隅切面積
47 BLOCK	7344.40	
1 LOT	248.35	
2 LOT	1744.26	
3 LOT	695.52	
4 LOT	1204.62	
5 LOT	668.55	{ 5-1 LOT 121.34㎡ 5-2 LOT 547.21㎡
6 LOT	387.07	
7 LOT	5.73	
8 LOT	214.86	
9 LOT	49.80	
10 LOT	504.37	
11 LOT	33.04	
12 LOT	107.03	
13 LOT	440.92	
14 LOT	443.05	
15 LOT	202.66	
16 LOT	66.11	
17 LOT	7.37	
18 LOT	37.60	
19 LOT	79.90	
20 LOT	12.69	
入口 1	138.97	
入口 2	51.84	
1 入り		0.91
2 入り		2.39
3 入り		3.42
4 入り		2.19
5 入り		0.94
合計 =	7344.31	9.85

* * * * * 各 筆 面 積 計 算 書 * * * * *

47 BLOCK

点 名	X	Y	(X-X0)*(YN-1-Y0)	(XN-1-X0)*(Y-Y0)
X0·Y0	- 150800.000	- 39000.000		
47-8	- 150886.049	- 39102.531		
47-9	- 150884.668	- 39101.045	+ 8681.094708	+ 8694.821205
47-10	- 150883.388	- 39048.061	+ 8425.940460	+ 4069.228748
47-11	- 150885.502	- 39045.846	+ 4109.311622	+ 3823.006248
47-12	- 150987.854	- 39045.580	+ 8612.354484	+ 3897.181160
47-13	- 150990.845	- 39048.151	+ 8698.715100	+ 9045.357954
47-14	- 151001.464	- 39129.134	+ 9700.693064	+ 24644.578230
47-15	- 150999.676	- 39131.496	+ 25784.960584	+ 26491.710144
47-16	- 150981.367	- 39133.879	+ 23849.035032	+ 26732.423204
47-17	- 150979.811	- 39132.702	+ 24072.916869	+ 24067.763634
47-6	- 150977.145	- 39112.452	+ 23507.495790	+ 20220.106572
47-7	- 150908.450	- 39104.517	+ 12195.419400	+ 18514.663965
47-8	- 150886.049	- 39102.531	+ 8993.583333	+ 11119.486950
			+166631.520446	+181320.328014
		倍面積	= 14688.807568	
		面積	= 7344.403784	

1 LOT

点 名	X	Y	(X-X0)*(YN-1-Y0)	(XN-1-X0)*(Y-Y0)
X0·Y0	- 150800.000	- 39000.000		
47-19	- 150885.854	- 39045.845		
47-24	- 150891.493	- 39045.830	+ 4194.496585	+ 3934.688820
47-40	- 150893.094	- 39087.957	+ 4266.498020	+ 8047.449801
47-23	- 150886.845	- 39087.401	+ 7638.625665	+ 8136.508694
47-19	- 150885.854	- 39045.845	+ 7503.725454	+ 3981.409025
			+ 23603.345724	+ 24100.056340
		倍面積	= 496.710616	
		面積	= 248.355308	

2 LOT

点 名	X	Y	(X-X0)*(YN-1-Y0)	(XN-1-X0)*(Y-Y0)
X0·Y0	- 150800.000	- 39000.000		
47-24	- 150891.493	- 39045.830		
47-25	- 150931.141	- 39045.727	+ 6010.192030	+ 4183.700411
47-44	- 150932.914	- 39091.573	+ 6077.758478	+ 12008.974793
47-59	- 150893.610	- 39087.977	+ 8572.148530	+ 11693.374978
47-58	- 150893.109	- 39087.958	+ 8191.450493	+ 8233.748380
47-40	- 150893.094	- 39087.957	+ 8188.362052	+ 8189.588313
47-24	- 150891.493	- 39045.830	+ 8047.449801	+ 4266.498020
			+ 45087.361384	+ 48575.884895
		倍面積	= 3488.523511	
		面積	= 1744.261755	

* * * * * 各 筆 面 積 計 算 書 * * * * *

3 LOT

点 名	X	Y	(X-X0)*(Yn-1-Y0)	(Xn-1-X0)*(Y-Y0)
X0·Y0	- 150900.000	- 39000.000		
47-25	- 150931.141	- 39045.727		
47-26	- 150946.100	- 39045.689	+ 2108.014700	+ 1422.801149
47-46	- 150947.930	- 39092.824	+ 2189.873770	+ 4279.186400
47-45	- 150942.966	- 39092.389	+ 3988.275984	+ 4428.204770
47-44	- 150932.914	- 39091.573	+ 3040.891546	+ 3934.525518
47-25	- 150931.141	- 39045.727	+ 2851.674793	+ 1505.058478
			+ 14178.730793	+ 15569.776315
		倍面積	= 1391.045522	
		面積	= 695.522761	

4 LOT

点 名	X	Y	(X-X0)*(Yn-1-Y0)	(Xn-1-X0)*(Y-Y0)
X0·Y0	- 150900.000	- 39000.000		
47-26	- 150946.100	- 39045.689		
47-27	- 150971.001	- 39045.624	+ 3243.964689	+ 2103.266400
47-48	- 150973.028	- 39095.026	+ 3331.829472	+ 6746.941026
47-46	- 150947.930	- 39092.824	+ 4554.596180	+ 6778.751072
47-26	- 150946.100	- 39045.689	+ 4279.186400	+ 2189.873770
			+ 15409.576741	+ 17818.832268
		倍面積	= 2409.255527	
		面積	= 1204.627763	

5 LOT

点 名	X	Y	(X-X0)*(Yn-1-Y0)	(Xn-1-X0)*(Y-Y0)
X0·Y0	- 150900.000	- 39000.000		
47-27	- 150971.001	- 39045.624		
47-12	- 150987.854	- 39045.580	+ 4008.250896	+ 3236.225580
47-13	- 150990.845	- 39048.151	+ 4140.715100	+ 4230.257954
47-28	- 150994.523	- 39076.197	+ 4551.376973	+ 6922.116465
47-50	- 150972.376	- 39079.143	+ 5514.834072	+ 7480.833789
47-27	- 150971.001	- 39045.624	+ 5619.232143	+ 3302.082624
			+ 23834.409184	+ 25171.516412
		倍面積	= 1337.107228	
		面積	= 668.553614	

6 LOT

点 名	X	Y	(X-X0)*(Yn-1-Y0)	(Xn-1-X0)*(Y-Y0)
X0·Y0	- 150900.000	- 39000.000		
47-28	- 150994.523	- 39076.197		
47-29	- 150996.716	- 39092.920	+ 7369.469052	+ 8783.077160

* * * * * 各 筆 面 積 計 算 書 * * * * *

点 名	X	Y	(X-X0)*(YN-1-Y0)	(XN-1-X0)*(Y-Y0)
47-49	- 150977.742	- 39095.439	+ 7223.786640	+ 9230.478324
47-48	- 150973.028	- 39095.026	+ 6969.719292	+ 7387.511292
47-50	- 150972.376	- 39079.143	+ 6877.601776	+ 5779.655004
47-28	- 150994.523	- 39076.197	+ 7480.833789	+ 5514.834072
			+ 35921.410549	+ 36695.555852
		倍面積	= 774.145303	
		面積	= 387.072651	

7 LOT

点 名	X	Y	(X-X0)*(YN-1-Y0)	(XN-1-X0)*(Y-Y0)
X0·Y0	- 150900.000	- 39000.000		
47-29	- 150996.716	- 39092.920		
47-30	- 150996.794	- 39093.514	+ 8994.098480	+ 9044.300024
47-49	- 150977.742	- 39095.439	+ 7269.965388	+ 9237.922566
47-29	- 150996.716	- 39092.920	+ 9230.478324	+ 7223.786640
			+ 25494.542192	+ 25506.009230
		倍面積	= 11.467038	
		面積	= 5.733519	

8 LOT

点 名	X	Y	(X-X0)*(YN-1-Y0)	(XN-1-X0)*(Y-Y0)
X0·Y0	- 150900.000	- 39000.000		
47-30	- 150996.794	- 39093.514		
47-31	- 150998.120	- 39103.629	+ 9175.593680	+ 10030.665426
47-52	- 150976.728	- 39106.458	+ 7951.245912	+ 10445.658960
47-51	- 150976.671	- 39105.475	+ 8162.241318	+ 8092.885800
47-49	- 150977.742	- 39095.439	+ 8199.837450	+ 7317.403569
47-30	- 150996.794	- 39093.514	+ 9237.922566	+ 7269.965388
			+ 42726.840926	+ 43156.579143
		倍面積	= 429.738217	
		面積	= 214.869108	

9 LOT

点 名	X	Y	(X-X0)*(YN-1-Y0)	(XN-1-X0)*(Y-Y0)
X0·Y0	- 150900.000	- 39100.000		
47-31	- 150998.120	- 39103.629		
47-32	- 150998.419	- 39105.910	+ 357.162551	+ 579.889200
47-53	- 150976.861	- 39108.758	+ 454.248510	+ 861.953602
47-52	- 150976.728	- 39106.458	+ 671.983824	+ 496.368338
47-31	- 150998.120	- 39103.629	+ 633.658960	+ 278.445912
			+ 2117.053845	+ 2216.657052
		倍面積	= 99.603207	
		面積	= 49.801603	

* * * * * 各 筆 面 積 計 算 書 * * * * *

10 LOT

点 名	X	Y	(X-X0)*(YN-1-Y0)	(XN-1-X0)*(Y-Y0)
X0·Y0	- 150900.000	- 39100.000		
47-32	- 150998.419	- 39105.910		
47-20	- 151001.411	- 39128.727	+ 599.339010	+ 2827.282613
47-21	- 150979.664	- 39131.587	+ 2288.507728	+ 3203.269257
47-6	- 150977.145	- 39112.452	+ 2436.779115	+ 991.976128
47-53	- 150976.861	- 39108.758	+ 957.073172	+ 675.635910
47-32	- 150998.419	- 39105.910	+ 861.953602	+ 454.248510
			+ 7143.652627	+ 8152.412418
		倍面積	= 1008.759791	
		面積	= 504.379895	

11 LOT

点 名	X	Y	(X-X0)*(YN-1-Y0)	(XN-1-X0)*(Y-Y0)
X0·Y0	- 150900.000	- 39100.000		
47-6	- 150977.145	- 39112.452		
47-33	- 150971.682	- 39111.821	+ 892.584264	+ 911.931045
47-54	- 150972.528	- 39105.033	+ 857.353488	+ 360.775506
47-51	- 150976.671	- 39105.475	+ 385.885143	+ 397.090800
47-53	- 150976.861	- 39108.758	+ 420.813975	+ 671.484618
47-6	- 150977.145	- 39112.452	+ 675.635910	+ 957.073172
			+ 3232.272780	+ 3298.355141
		倍面積	= 66.082361	
		面積	= 33.041180	

12 LOT

点 名	X	Y	(X-X0)*(YN-1-Y0)	(XN-1-X0)*(Y-Y0)
X0·Y0	- 150900.000	- 39000.000		
47-33	- 150971.682	- 39111.821		
47-34	- 150967.874	- 39111.381	+ 7589.738554	+ 7984.012842
47-47	- 150969.755	- 39094.739	+ 7769.381655	+ 6430.314886
47-49	- 150977.742	- 39095.439	+ 7365.199338	+ 6657.347445
47-51	- 150976.671	- 39105.475	+ 7317.403569	+ 8199.837450
47-54	- 150972.528	- 39105.033	+ 7649.890800	+ 8052.985143
47-33	- 150971.682	- 39111.821	+ 7528.975506	+ 8110.153488
			+ 45220.589422	+ 45434.651254
		倍面積	= 214.061832	
		面積	= 107.030916	

13 LOT

点 名	X	Y	(X-X0)*(YN-1-Y0)	(XN-1-X0)*(Y-Y0)
X0·Y0	- 150900.000	- 39000.000		
47-34	- 150967.874	- 39111.381		
47-35	- 150941.090	- 39108.287	+ 4576.645290	+ 7349.871838

* * * * * 各 筆 面 積 計 算 書 * * * * *

点 名	X	Y	(X-X0)*(YN-1-Y0)	(XN-1-X0)*(Y-Y0)
47-45	- 150942.966	- 39092.389	+ 4652.659242	+ 3796.264010
47-47	- 150969.755	- 39094.739	+ 6444.594695	+ 4070.555874
47-34	- 150967.874	- 39111.381	+ 6430.314886	+ 7769.381655
			+ 22104.214113	+ 22986.073377
		倍面積	= 881.859264	
		面積	= 440.929632	

14 LOT

点 名	X	Y	(X-X0)*(YN-1-Y0)	(XN-1-X0)*(Y-Y0)
X0-Y0	- 150900.000	- 39000.000		
47-35	- 150941.090	- 39108.287		
47-36	- 150912.878	- 39105.028	+ 1394.519986	+ 4315.600520
47-43	- 150914.607	- 39089.898	+ 1534.143996	+ 1157.706444
47-44	- 150932.914	- 39091.573	+ 2958.902772	+ 1337.606811
47-45	- 150942.966	- 39092.389	+ 3934.525518	+ 3040.891546
47-35	- 150941.090	- 39108.287	+ 3796.264010	+ 4652.659242
			+ 13618.356282	+ 14504.464563
		倍面積	= 886.108281	
		面積	= 443.054140	

15 LOT

点 名	X	Y	(X-X0)*(YN-1-Y0)	(XN-1-X0)*(Y-Y0)
X0-Y0	- 150800.000	- 39000.000		
47-36	- 150912.878	- 39105.028		
47-7	- 150908.450	- 39104.517	+ 11390.286600	+ 11797.669926
47-37	- 150906.330	- 39104.329	+ 11113.292610	+ 11314.480050
47-55	- 150906.897	- 39097.934	+ 11152.457113	+ 10413.322220
47-56	- 150895.892	- 39097.768	+ 9391.087128	+ 10451.105896
47-42	- 150896.779	- 39088.267	+ 9461.889272	+ 8464.099164
47-43	- 150914.607	- 39089.898	+ 10116.016069	+ 8700.238542
47-36	- 150912.878	- 39105.028	+ 10147.506444	+ 12036.943996
			+ 72772.535236	+ 73177.859794
		倍面積	= 405.324558	
		面積	= 202.662279	

16 LOT

点 名	X	Y	(X-X0)*(YN-1-Y0)	(XN-1-X0)*(Y-Y0)
X0-Y0	- 150800.000	- 39000.000		
47-37	- 150906.330	- 39104.329		
47-38	- 150895.370	- 39103.357	+ 9949.856730	+ 10989.949810
47-56	- 150895.892	- 39097.768	+ 9911.109444	+ 9324.134160
47-55	- 150906.897	- 39097.934	+ 10451.105896	+ 9391.087128

* * * * * 各 筆 面 積 計 算 書 * * * * *

点 名	X	Y	(X-X0)*(YN-1-Y0)	(XN-1-X0)*(Y-Y0)
47-37	- 150906.330	- 39104.329	+ 10413.322220	+ 11152.457113
			+ 40725.394290	+ 40857.628211
		倍面積	= 132.233921	
		面積	= 66.116960	

17 LOT

点 名	X	Y	(X-X0)*(YN-1-Y0)	(XN-1-X0)*(Y-Y0)
X0-Y0	- 150800.000	- 39000.000		
47-38	- 150895.370	- 39103.357		
47-39	- 150894.049	- 39103.240	+ 9720.622493	+ 9845.998800
47-57	- 150894.563	- 39097.749	+ 9762.684120	+ 9193.195701
47-56	- 150895.892	- 39097.768	+ 9373.347108	+ 9245.235384
47-38	- 150895.370	- 39103.357	+ 9324.134160	+ 9911.109444
			+ 38180.787881	+ 38195.539329
		倍面積	= 14.751448	
		面積	= 7.375724	

18 LOT

点 名	X	Y	(X-X0)*(YN-1-Y0)	(XN-1-X0)*(Y-Y0)
X0-Y0	- 150800.000	- 39000.000		
47-18	- 150887.208	- 39102.634		
47-22	- 150887.089	- 39097.636	+ 8938.292426	+ 8514.640288
47-57	- 150894.563	- 39097.749	+ 9232.753068	+ 8512.862661
47-39	- 150894.049	- 39103.240	+ 9193.195701	+ 9762.684120
47-18	- 150887.208	- 39102.634	+ 9003.353920	+ 9652.625066
			+ 36367.595115	+ 36442.812135
		倍面積	= 75.217020	
		面積	= 37.608510	

19 LOT

点 名	X	Y	(X-X0)*(YN-1-Y0)	(XN-1-X0)*(Y-Y0)
X0-Y0	- 150800.000	- 39000.000		
47-22	- 150887.089	- 39097.636		
47-23	- 150886.845	- 39087.401	+ 8479.198420	+ 7611.665689
47-58	- 150893.109	- 39087.958	+ 8137.819709	+ 7638.712510
47-59	- 150893.610	- 39087.977	+ 8233.748380	+ 8191.450493
47-41	- 150895.463	- 39088.147	+ 8398.548351	+ 8251.440670
47-57	- 150894.563	- 39097.749	+ 8335.444761	+ 9331.412787
47-22	- 150887.089	- 39097.636	+ 8512.862661	+ 9232.753068
			+ 50097.622282	+ 50257.435217
		倍面積	= 159.812935	
		面積	= 79.906467	

* * * * * 各 筆 面 積 計 算 書 * * * * *

20 LOT

点 名	X	Y	(X-X0)*(YN-1-Y0)	(XN-1-X0)*(Y-Y0)
X0·Y0	- 150800.000	- 39000.000		
47-41	- 150895.463	- 39088.147		
47-42	- 150896.779	- 39088.267	+ 8530.778513	+ 8426.232621
47-56	- 150895.892	- 39097.768	+ 8464.099164	+ 9461.889272
47-57	- 150894.563	- 39097.749	+ 9245.235384	+ 9373.347108
47-41	- 150895.463	- 39088.147	+ 9331.412787	+ 8335.444761
			+ 35571.525848	+ 35596.913762
		倍面積	= 25.387914	
		面積	= 12.693957	

210 1

点 名	X	Y	(X-X0)*(YN-1-Y0)	(XN-1-X0)*(Y-Y0)
X0·Y0	- 150800.000	- 39000.000		
47-8	- 150886.049	- 39102.531		
47-9	- 150884.668	- 39101.045	+ 8681.094708	+ 8694.821205
47-10	- 150883.388	- 39048.061	+ 8425.940460	+ 4069.228748
47-11	- 150885.502	- 39045.846	+ 4109.311622	+ 3823.006248
47-19	- 150885.854	- 39045.845	+ 3936.062484	+ 3919.839190
47-18	- 150887.208	- 39102.634	+ 3998.050760	+ 8811.539436
47-8	- 150886.049	- 39102.531	+ 8831.553066	+ 8941.523448
			+ 37982.013100	+ 38259.958275
		倍面積	= 277.945175	
		面積	= 138.972587	

210 2

点 名	X	Y	(X-X0)*(YN-1-Y0)	(XN-1-X0)*(Y-Y0)
X0·Y0	- 150900.000	- 39100.000		
47-14	- 151001.464	- 39129.134		
47-15	- 150999.676	- 39131.496	+ 2903.960584	+ 3195.710144
47-16	- 150981.367	- 39133.879	+ 2562.735032	+ 3376.923204
47-17	- 150979.811	- 39132.702	+ 2703.916869	+ 2660.863634
47-21	- 150979.664	- 39131.587	+ 2605.172128	+ 2520.990057
47-20	- 151001.411	- 39128.727	+ 3203.269257	+ 2288.507728
47-14	- 151001.464	- 39129.134	+ 2914.756328	+ 2954.508074
			+ 16893.810198	+ 16997.502841
		倍面積	= 103.692643	
		面積	= 51.846321	

1 2339

点 名	X	Y	(X-X0)*(YN-1-Y0)	(XN-1-X0)*(Y-Y0)
X0·Y0	- 150800.000	- 39100.000		
47-1	- 150884.701	- 39102.412		
47-8	- 150886.049	- 39102.531	+ 207.550188	+ 214.378231

* * * * * 各 筆 面 積 計 算 書 * * * * *

点 名	X	Y	(X-X0)*(YN-1-Y0)	(XN-1-X0)*(Y-Y0)
47-9	- 150884.668	- 39101.045	+ 214.294708	+ 89.921205
47-1	- 150884.701	- 39102.412	+ 88.512545	+ 204.219216
			+ 510.357441	+ 508.518652
		倍面積	= 1.838789	
		面積	= 0.919394	

2 筆目

点 名	X	Y	(X-X0)*(YN-1-Y0)	(XN-1-X0)*(Y-Y0)
X0-Y0	- 150800.000	- 39000.000		
47-2	- 150883.335	- 39045.852		
47-10	- 150883.388	- 39048.061	+ 3823.506576	+ 4005.163435
47-11	- 150885.502	- 39045.846	+ 4109.311622	+ 3823.006248
47-2	- 150883.335	- 39045.852	+ 3820.576410	+ 3920.437704
			+ 11753.394608	+ 11748.607387
		倍面積	= 4.787221	
		面積	= 2.393610	

3 筆目

点 名	X	Y	(X-X0)*(YN-1-Y0)	(XN-1-X0)*(Y-Y0)
X0-Y0	- 150900.000	- 39000.000		
47-3	- 150990.507	- 39045.573		
47-12	- 150987.854	- 39045.580	+ 4003.770342	+ 4125.309060
47-13	- 150990.845	- 39048.151	+ 4140.715100	+ 4230.257954
47-3	- 150990.507	- 39045.573	+ 4358.002557	+ 4140.079185
			+ 12502.487999	+ 12495.646199
		倍面積	= 6.841800	
		面積	= 3.420900	

4 筆目

点 名	X	Y	(X-X0)*(YN-1-Y0)	(XN-1-X0)*(Y-Y0)
X0-Y0	- 150900.000	- 39100.000		
47-4	- 151001.739	- 39131.228		
47-14	- 151001.464	- 39129.134	+ 3168.517792	+ 2964.064026
47-15	- 150999.676	- 39131.496	+ 2903.960584	+ 3195.710144
47-4	- 151001.739	- 39131.228	+ 3204.371544	+ 3112.682128
			+ 9276.849920	+ 9272.456298
		倍面積	= 4.393622	
		面積	= 2.196811	

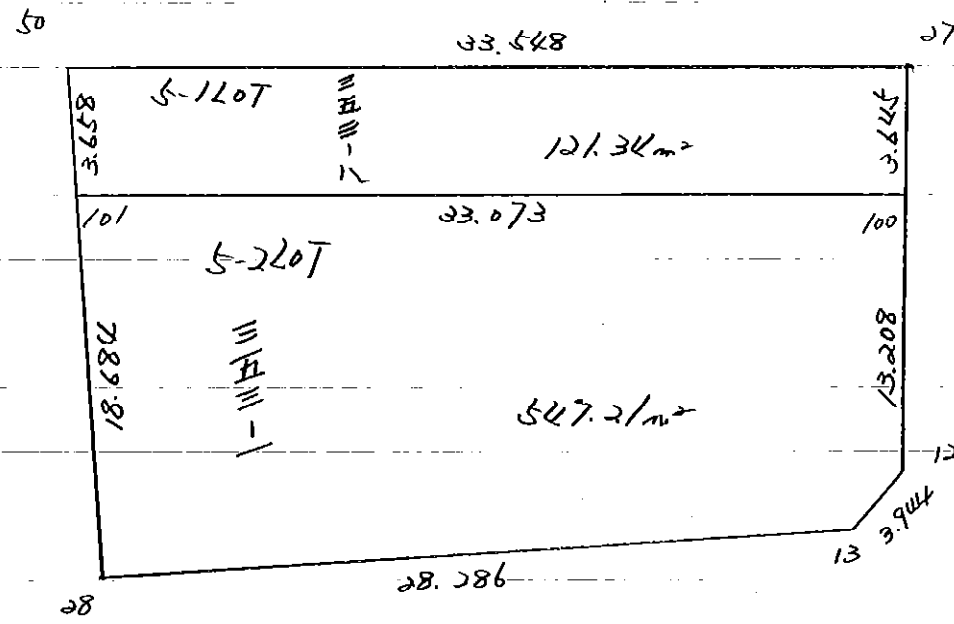
5 筆目

点 名	X	Y	(X-X0)*(YN-1-Y0)	(XN-1-X0)*(Y-Y0)
X0-Y0	- 150900.000	- 39100.000		
47-5	- 150979.990	- 39134.058		
47-16	- 150981.367	- 39133.879	+ 2771.197286	+ 2709.981210

* * * * * 各 筆 面 積 計 算 書 * * * * *

点 名	X	Y	(X-X0)*(YN-1-Y0)	(XN-1-X0)*(Y-Y0)
47-17	150979.811	39132.702	+ 2703.916869	+ 2660.863634
47-5	150979.990	39134.058	+ 2615.832980	+ 2718.203038
			+ 8090.947135	+ 8089.047882
		倍面積	= 1.899253	
		面積	= 0.949626	

47 Block



* * * * 5-1 LOT

面積計算書

* * * * NO 1

点名	X	DX	DMD.1	Y	DY	DMD.2	DX * DMD.2	DY * DMD.1
47-27	- 150971.001			- 39045.624				
47-100	- 150974.646	+ 3.645	+ 3.645	- 39045.615	- 0.009	- 0.009	- 0.032805	- 0.032805
47-101	- 150976.002	+ 1.356	+ 8.646	- 39078.661	+ 33.046	+ 33.028	+ 44.785968	+ 285.715716
47-50	- 150972.376	- 3.626	+ 6.376	- 39079.143	+ 0.482	+ 66.556	- 241.332056	+ 3.073232
47-27	- 150971.001	- 1.375	+ 1.375	- 39045.624	- 33.519	+ 33.519	- 46.088625	- 46.088625
		+ 5.001			+ 33.528		+ 44.785968	+ 288.788948
		- 5.001			- 33.528		- 287.453486	- 46.121430
							- 242.667518	+ 242.667518

面積 = ~~121.333759~~
121.34

確定後変更につき端数調整

* * * * 5-2 LOT

面積計算書 * * * * NO 1

点名	X	DX	DMD.1	Y	DY	DMD.2	DX * DMD.2	DY * DMD.1
47-100	- 150974.646			- 39045.615				
47-12	- 150987.854	+ 13.208	+ 13.208	- 39045.580	- 0.035	- 0.035	- 0.462280	- 0.462280
47-13	- 150990.845	+ 2.991	+ 29.407	- 39048.151	+ 2.571	+ 2.501	+ 7.480491	+ 75.605397
47-28	- 150994.523	+ 3.678	+ 36.076	- 39076.197	+ 28.046	+ 33.118	+ 121.808004	+ 1011.787496
47-101	- 150976.002	- 18.521	+ 21.233	- 39078.661	+ 2.464	+ 63.628	+ 1178.454188	+ 52.318112
47-100	- 150974.646	- 1.356	+ 1.356	- 39045.615	- 33.046	+ 33.046	- 44.810376	- 44.810376
		+ 19.877			+ 33.081		+ 129.288495	+ 1139.711005
		- 19.877			- 33.081		- 1223.726844	- 45.272656
							- 1094.438349	+ 1094.438349
						面積 =	547.219174	