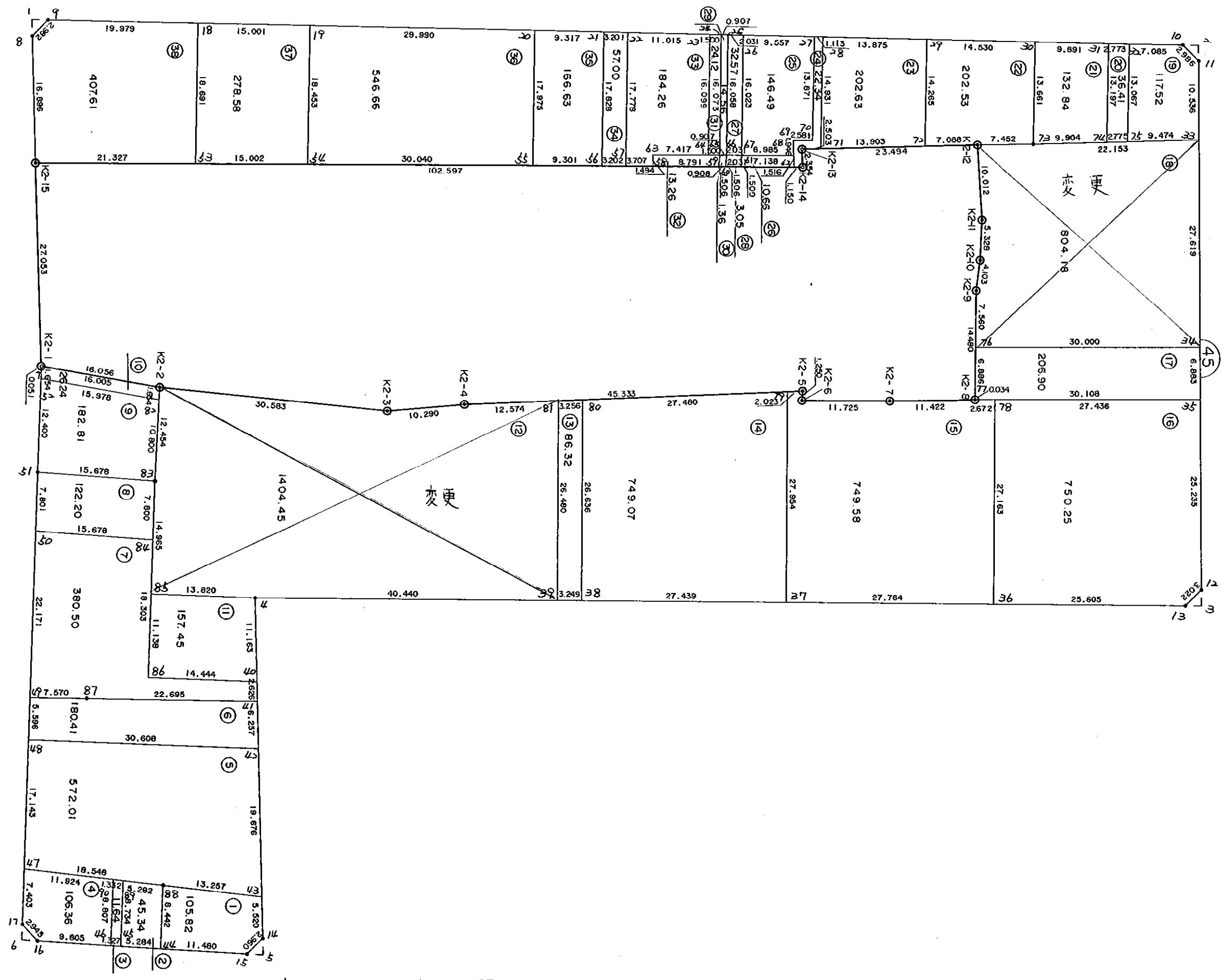


4 5 B L O C K

4
B
L
C
C
Y



* * * 各筆面積 集計表 * * *

街区名・筆名	各筆面積	隅切面積
45 BLOCK	9242.70	
1 LOT	105.82	
2 LOT	45.34	
3 LOT	11.64	
4 LOT	106.36	
5 LOT	572.01	
6 LOT	180.41	
7 LOT	380.50	
8 LOT	122.20	
9 LOT	182.81	
10 LOT	26.24	
11 LOT	157.45	
12 LOT	1404.45	{ 12-1 LOT 703.01 ^m { 12-2 LOT 306.00 ^m { 12-3 LOT 395.44 ^m
13 LOT	86.32	
14 LOT	749.07	
15 LOT	749.58	
16 LOT	750.25	{ 18-1 LOT 352.77 ^m { 18-2 LOT 94.36 ^m { 18-3 LOT 293.71 ^m { 18-4 LOT 61.34 ^m { 18-5 LOT 2.00 ^m
17 LOT	206.90	
18 LOT	804.18	
19 LOT	117.52	
20 LOT	36.41	
21 LOT	132.84	
22 LOT	202.53	
23 LOT	202.63	
24	22.34	
25 LOT	146.49	
26 LOT	10.66	
27 LOT	32.57	
28 LOT	3.05	
29 LOT	14.56	
30 LOT	1.36	
31 LOT	24.12	
32 LOT	13.26	
33 LOT	184.26	
34 LOT	57.00	
35 LOT	166.63	
36 LOT	546.66	
37 LOT	278.58	
38 LOT	407.61	
1 入三ヶリ		2.32
2 入三ヶリ		2.17
3 入三ヶリ		2.30
5 入三ヶリ		2.36
6 入三ヶリ		2.11
合計 =	9242.61	11.26

* * * * * 各 筆 面 積 計 算 書 * * * * *

45 BLOCK

点 名	X	Y	(X-X0)*(YN-1-Y0)	(XN-1-X0)*(Y-Y0)
X0-Y0	- 150700.000	- 39000.000		
K2-15	- 150881.612	- 39149.017		
45-8	- 150883.034	- 39165.853	+ 27275.177578	+ 30120.895036
45-9	- 150881.057	- 39168.086	+ 30028.846621	+ 30765.452924
45-10	- 150729.419	- 39174.305	+ 4944.922034	+ 31559.140385
45-11	- 150727.202	- 39172.304	+ 4741.444610	+ 5069.011376
45-12	- 150722.683	- 39102.177	+ 3908.371632	+ 2779.418754
45-13	- 150724.675	- 39099.905	+ 2521.217475	+ 2266.145115
45-4	- 150848.992	- 39093.212	+ 14885.045760	+ 2300.006100
45-14	- 150845.320	- 39048.119	+ 13545.567840	+ 7169.346048
45-15	- 150847.334	- 39045.950	+ 7089.564746	+ 6677.454000
45-16	- 150875.230	- 39045.864	+ 8051.818500	+ 6757.326576
45-17	- 150877.340	- 39047.918	+ 8133.521760	+ 8396.671140
45-51	- 150878.865	- 39108.013	+ 8570.853070	+ 19155.025420
45-7	- 150879.185	- 39122.063	+ 19354.309405	+ 21832.798495
K2-2	- 150863.280	- 39120.284	+ 19930.446640	+ 21553.088540
K2-3	- 150832.723	- 39119.035	+ 15964.453332	+ 19436.034800
K2-4	- 150822.545	- 39120.551	+ 14587.144075	+ 15999.890373
K2-5	- 150777.446	- 39125.154	+ 9336.192746	+ 15336.996930
K2-6	- 150777.447	- 39123.904	+ 9692.801838	+ 9595.869184
K2-7	- 150765.741	- 39124.564	+ 8145.572864	+ 9647.108108
K2-8	- 150754.354	- 39125.452	+ 6770.551656	+ 8247.339932
K2-9	- 150755.058	- 39139.915	+ 6907.136216	+ 7604.939910
K2-10	- 150754.765	- 39144.008	+ 7662.444975	+ 7928.792464
K2-11	- 150754.830	- 39149.336	+ 7895.958640	+ 8178.386040
K2-12	- 150756.023	- 39159.277	+ 8366.250728	+ 8733.157910
K2-13	- 150779.424	- 39157.192	+ 12650.416448	+ 8806.367416
K2-14	- 150779.181	- 39154.851	+ 12446.619752	+ 12298.885824
K2-15	- 150881.612	- 39149.017	+ 28122.799812	+ 11799.315077
			+321529.450753	+340014.863877
		倍面積	= 18485.413124	
		面積	= 9242.706562	

1 LOT

点 名	X	Y	(X-X0)*(YN-1-Y0)	(XN-1-X0)*(Y-Y0)
X0-Y0	- 150800.000	- 39000.000		
45-43	- 150845.768	- 39053.621		
45-14	- 150845.320	- 39048.119	+ 2430.103720	+ 2202.310392
45-15	- 150847.334	- 39045.950	+ 2277.664746	+ 2082.454000
45-44	- 150858.814	- 39045.915	+ 2702.503300	+ 2173.340610
45-88	- 150859.005	- 39054.355	+ 2709.214575	+ 3196.834970
45-43	- 150845.768	- 39053.621	+ 2487.719640	+ 3163.907105
			+ 12607.205981	+ 12818.847077
		倍面積	= 211.641096	
		面積	= 105.820548	

* * * * * 各 筆 面 積 計 算 書 * * * * *

2 LOT

点 名	X	Y	(X-X0)*(YN-1-Y0)	(XN-1-X0)*(Y-Y0)
X0-Y0	- 150800.000	- 39000.000		
45-44	- 150858.814	- 39045.915		
45-45	- 150864.098	- 39045.898	+ 2943.059670	+ 2699.444972
45-89	- 150864.290	- 39054.630	+ 2950.782420	+ 3501.673740
45-88	- 150859.005	- 39054.355	+ 3223.443150	+ 3494.482950
45-44	- 150858.814	- 39045.915	+ 3196.834970	+ 2709.214575
			+ 12314.120210	+ 12404.816237
		倍面積	= 90.696027	
		面積	= 45.348013	

3 LOT

点 名	X	Y	(X-X0)*(YN-1-Y0)	(XN-1-X0)*(Y-Y0)
X0-Y0	- 150800.000	- 39000.000		
45-45	- 150864.098	- 39045.898		
45-46	- 150865.425	- 39045.894	+ 3002.876650	+ 2941.713612
45-90	- 150865.620	- 39054.699	+ 3011.564280	+ 3578.682075
45-89	- 150864.290	- 39054.630	+ 3516.598710	+ 3584.820600
45-45	- 150864.098	- 39045.898	+ 3501.673740	+ 2950.782420
			+ 13032.713380	+ 13055.998707
		倍面積	= 23.285327	
		面積	= 11.642663	

4 LOT

点 名	X	Y	(X-X0)*(YN-1-Y0)	(XN-1-X0)*(Y-Y0)
X0-Y0	- 150800.000	- 39000.000		
45-46	- 150865.425	- 39045.894		
45-16	- 150875.230	- 39045.864	+ 3452.605620	+ 3000.652200
45-17	- 150877.340	- 39047.918	+ 3547.121760	+ 3604.871140
45-47	- 150877.528	- 39055.319	+ 3714.986704	+ 4278.371460
45-90	- 150865.620	- 39054.699	+ 3630.032780	+ 4240.704072
45-46	- 150865.425	- 39045.894	+ 3578.682075	+ 3011.564280
			+ 17923.428939	+ 18136.163152
		倍面積	= 212.734213	
		面積	= 106.367106	

5 LOT

点 名	X	Y	(X-X0)*(YN-1-Y0)	(XN-1-X0)*(Y-Y0)
X0-Y0	- 150800.000	- 39000.000		
45-47	- 150877.528	- 39055.319		
45-48	- 150877.963	- 39072.456	+ 4312.835197	+ 5617.368768

* * * * * 各 筆 面 積 計 算 書 * * * * *

点 名	X	Y	(X-X0)*(YN-1-Y0)	(XN-1-X0)*(Y-Y0)
45-42	- 150847.365	- 39073.233	+ 3431.878440	+ 5709.464379
45-43	- 150845.768	- 39053.621	+ 3351.727944	+ 2539.758665
45-88	- 150859.005	- 39054.355	+ 3163.907105	+ 2487.719640
45-47	- 150877.528	- 39055.319	+ 4214.034440	+ 3264.097595
			+ 18474.383126	+ 19618.409047
		倍面積	= 1144.025921	
		面積	= 572.012960	

6 LOT

点 名	X	Y	(X-X0)*(YN-1-Y0)	(XN-1-X0)*(Y-Y0)
X0·Y0	- 150800.000	- 39000.000		
45-48	- 150877.963	- 39072.456		
45-49	- 150878.105	- 39078.051	+ 5659.175880	+ 6085.090113
45-87	- 150870.544	- 39078.415	+ 5506.029744	+ 6124.603575
45-41	- 150847.873	- 39079.469	+ 3753.961295	+ 5606.061136
45-42	- 150847.365	- 39073.233	+ 3764.049185	+ 3505.883409
45-48	- 150877.963	- 39072.456	+ 5709.464379	+ 3431.878440
			+ 24392.680483	+ 24753.516673
		倍面積	= 360.836190	
		面積	= 180.418095	

7 LOT

点 名	X	Y	(X-X0)*(YN-1-Y0)	(XN-1-X0)*(Y-Y0)
X0·Y0	- 150800.000	- 39000.000		
45-49	- 150878.105	- 39078.051		
45-50	- 150878.667	- 39100.215	+ 6140.038017	+ 7827.292575
45-84	- 150862.990	- 39100.033	+ 6312.542850	+ 7869.296011
45-86	- 150862.526	- 39081.736	+ 6254.663358	+ 5148.550640
45-40	- 150848.086	- 39082.086	+ 3930.357296	+ 5132.509236
45-41	- 150847.873	- 39079.469	+ 3929.703078	+ 3821.346334
45-87	- 150870.544	- 39078.415	+ 5606.061136	+ 3753.961295
45-49	- 150878.105	- 39078.051	+ 6124.603575	+ 5506.029744
			+ 38297.969310	+ 39058.985835
		倍面積	= 761.016525	
		面積	= 380.508262	

8 LOT

点 名	X	Y	(X-X0)*(YN-1-Y0)	(XN-1-X0)*(Y-Y0)
X0·Y0	- 150800.000	- 39100.000		
45-50	- 150878.667	- 39100.215		
45-51	- 150878.865	- 39108.013	+ 16.955975	+ 630.358671
45-83	- 150863.188	- 39107.830	+ 506.325444	+ 617.512950

* * * * * 各 筆 面 積 計 算 書 * * * * *

点 名	X	Y	(X-X0)*(YN-1-Y0)	(XN-1-X0)*(Y-Y0)
45-84	- 150862.990	- 39100.033	+ 493.211700	+ 2.085204
45-50	- 150878.667	- 39100.215	+ 2.596011	+ 13.542850
			+ 1019.089130	+ 1263.499675
		倍面積	= 244.410545	
		面積	= 122.205272	

9 LOT

点 名	X	Y	(X-X0)*(YN-1-Y0)	(XN-1-X0)*(Y-Y0)
X0·Y0	- 150800.000	- 39100.000		
45-51	- 150878.865	- 39108.013		
45-52	- 150879.147	- 39120.409	+ 634.204911	+ 1609.555785
45-82	- 150863.268	- 39118.630	+ 1291.236612	+ 1474.508610
45-83	- 150863.188	- 39107.830	+ 1177.192440	+ 495.388440
45-51	- 150878.865	- 39108.013	+ 617.512950	+ 506.325444
			+ 3720.146913	+ 4085.778279
		倍面積	= 365.631366	
		面積	= 182.815683	

10 LOT

点 名	X	Y	(X-X0)*(YN-1-Y0)	(XN-1-X0)*(Y-Y0)
X0·Y0	- 150800.000	- 39100.000		
45-52	- 150879.147	- 39120.409		
45-7	- 150879.185	- 39122.063	+ 1616.086665	+ 1746.220261
K2-2	- 150863.280	- 39120.284	+ 1396.146640	+ 1606.188540
45-82	- 150863.268	- 39118.630	+ 1283.328112	+ 1178.906400
45-52	- 150879.147	- 39120.409	+ 1474.508610	+ 1291.236612
			+ 5770.070027	+ 5822.551813
		倍面積	= 52.481786	
		面積	= 26.240893	

11 LOT

点 名	X	Y	(X-X0)*(YN-1-Y0)	(XN-1-X0)*(Y-Y0)
X0·Y0	- 150800.000	- 39000.000		
45-4	- 150848.992	- 39093.212		
45-40	- 150848.086	- 39082.086	+ 4482.192232	+ 4021.557312
45-86	- 150862.526	- 39081.736	+ 5132.509236	+ 3930.357296
45-85	- 150862.808	- 39092.870	+ 5133.674688	+ 5806.789620
45-4	- 150848.992	- 39093.212	+ 4549.887040	+ 5854.459296
			+ 19298.263196	+ 19613.163524
		倍面積	= 314.900328	
		面積	= 157.450164	

* * * * * 各 筆 面 積 計 算 書 * * * * *

12 LOT

点 名	X	Y	(X-X0)*(YN-1-Y0)	(XN-1-X0)*(Y-Y0)
X0-Y0	- 150800.000	- 39000.000		
45-39	- 150808.610	- 39095.386		
45-4	- 150848.992	- 39093.212	+ 4673.150912	+ 802.555320
45-85	- 150862.808	- 39092.870	+ 5854.459296	+ 4549.887040
45-83	- 150863.188	- 39107.830	+ 5868.269560	+ 6772.586640
K2-2	- 150863.280	- 39120.284	+ 6823.482400	+ 7600.505392
K2-3	- 150832.723	- 39119.035	+ 3936.053332	+ 7532.534800
K2-4	- 150822.545	- 39120.551	+ 2683.644075	+ 3944.790373
45-81	- 150810.036	- 39121.828	+ 1209.849836	+ 2746.612260
45-39	- 150808.610	- 39095.386	+ 1048.939080	+ 957.293896
			+ 32097.848491	+ 34906.765721
		倍面積	= 2808.917230	
		面積	= 1404.458615	

13 LOT

点 名	X	Y	(X-X0)*(YN-1-Y0)	(XN-1-X0)*(Y-Y0)
X0-Y0	- 150800.000	- 39000.000		
45-38	- 150805.366	- 39095.561		
45-39	- 150808.610	- 39095.386	+ 822.780210	+ 511.841276
45-81	- 150810.036	- 39121.828	+ 957.293896	+ 1048.939080
45-80	- 150806.797	- 39122.159	+ 828.064916	+ 1225.987724
45-38	- 150805.366	- 39095.561	+ 655.505194	+ 649.528117
			+ 3263.644216	+ 3436.296197
		倍面積	= 172.651981	
		面積	= 86.325990	

14 LOT

点 名	X	Y	(X-X0)*(YN-1-Y0)	(XN-1-X0)*(Y-Y0)
X0-Y0	- 150700.000	- 39000.000		
45-37	- 150777.967	- 39097.035		
45-38	- 150805.366	- 39095.561	+ 10224.189810	+ 7450.604487
45-80	- 150806.797	- 39122.159	+ 10205.628117	+ 12871.405194
45-79	- 150779.459	- 39124.949	+ 9706.631981	+ 13344.178353
45-37	- 150777.967	- 39097.035	+ 9741.898683	+ 7710.304065
			+ 39878.348591	+ 41376.492099
		倍面積	= 1498.143508	
		面積	= 749.071754	

15 LOT

点 名	X	Y	(X-X0)*(YN-1-Y0)	(XN-1-X0)*(Y-Y0)
X0-Y0	- 150700.000	- 39000.000		
45-36	- 150750.243	- 39098.528		
45-37	- 150777.967	- 39097.035	+ 7681.932576	+ 4875.329505

* * * * * 各 筆 面 積 計 算 書 * * * * *

点 名	X	Y	(X-X0)*(YN-1-Y0)	(XN-1-X0)*(Y-Y0)
45-79	- 150779.459	- 39124.949	+ 7710.304065	+ 9741.898683
K2-5	- 150777.446	- 39125.154	+ 9676.800254	+ 9944.611686
K2-6	- 150777.447	- 39123.904	+ 9692.801838	+ 9595.869184
K2-7	- 150765.741	- 39124.564	+ 8145.572864	+ 9647.108108
K2-8	- 150754.354	- 39125.452	+ 6770.551656	+ 8247.339932
45-77	- 150754.356	- 39125.486	+ 6819.068912	+ 6820.666044
45-78	- 150751.689	- 39125.652	+ 6486.245854	+ 6829.940112
45-36	- 150750.243	- 39098.528	+ 6313.133436	+ 5092.813792
			+ 69296.411455	+ 70795.577046
		倍面積	= 1499.165591	
		面積	= 749.582795	

16 LOT

点 名	X	Y	(X-X0)*(YN-1-Y0)	(XN-1-X0)*(Y-Y0)
X0·Y0	- 150700.000	- 39000.000		
45-35	- 150724.306	- 39127.360		
45-12	- 150722.683	- 39102.177	+ 2888.906880	+ 2483.514162
45-13	- 150724.675	- 39099.905	+ 2521.217475	+ 2266.145115
45-36	- 150750.243	- 39098.528	+ 5019.526915	+ 2431.178400
45-78	- 150751.689	- 39125.652	+ 5092.813792	+ 6313.133436
45-35	- 150724.306	- 39127.360	+ 3054.097512	+ 6583.111040
			+ 18576.562574	+ 20077.082153
		倍面積	= 1500.519579	
		面積	= 750.259789	

17 LOT

点 名	X	Y	(X-X0)*(YN-1-Y0)	(XN-1-X0)*(Y-Y0)
X0·Y0	- 150700.000	- 39100.000		
45-34	- 150724.749	- 39134.229		
45-35	- 150724.306	- 39127.360	+ 831.970074	+ 677.132640
45-77	- 150754.356	- 39125.486	+ 1487.180160	+ 619.462716
45-76	- 150754.691	- 39132.364	+ 1393.854826	+ 1759.177584
45-34	- 150724.749	- 39134.229	+ 800.976636	+ 1872.018239
			+ 4513.981696	+ 4927.791179
		倍面積	= 413.809483	
		面積	= 206.904741	

18 LOT

点 名	X	Y	(X-X0)*(YN-1-Y0)	(XN-1-X0)*(Y-Y0)
X0·Y0	- 150700.000	- 39100.000		
45-33	- 150726.525	- 39161.790		
45-34	- 150724.749	- 39134.229	+ 1529.240710	+ 907.924225

* * * * * 各 筆 面 積 計 算 書 * * * * *

点 名	X	Y	(X-X0)*(YN-1-Y0)	(XN-1-X0)*(Y-Y0)
45-76	- 150754.691	- 39132.364	+ 1872.018239	+ 800.976636
K2-9	- 150755.058	- 39139.915	+ 1781.897112	+ 2182.991265
K2-10	- 150754.765	- 39144.008	+ 2185.944975	+ 2422.992464
K2-11	- 150754.830	- 39149.336	+ 2412.958640	+ 2701.886040
K2-12	- 150756.023	- 39159.277	+ 2763.950728	+ 3250.157910
45-73	- 150748.593	- 39159.846	+ 2880.447261	+ 3352.752458
45-33	- 150726.525	- 39161.790	+ 1587.415150	+ 3002.561470
			+ 17013.872815	+ 18622.242468
		倍面積	= 1608.369653	
		面積	= 804.184826	

19 LOT

点 名	X	Y	(X-X0)*(YN-1-Y0)	(XN-1-X0)*(Y-Y0)
X0·Y0	- 150700.000	- 39100.000		
45-32	- 150736.498	- 39174.015		
45-10	- 150729.419	- 39174.305	+ 2177.447285	+ 2711.983890
45-11	- 150727.202	- 39172.304	+ 2021.244610	+ 2127.111376
45-33	- 150726.525	- 39161.790	+ 1917.863600	+ 1680.811580
45-75	- 150735.962	- 39160.959	+ 2222.091980	+ 1616.937475
45-32	- 150736.498	- 39174.015	+ 2224.881582	+ 2661.727430
			+ 10563.529057	+ 10798.571751
		倍面積	= 235.042694	
		面積	= 117.521347	

20 LOT

点 名	X	Y	(X-X0)*(YN-1-Y0)	(XN-1-X0)*(Y-Y0)
X0·Y0	- 150700.000	- 39100.000		
45-31	- 150739.269	- 39173.901		
45-32	- 150736.498	- 39174.015	+ 2697.238698	+ 2906.495035
45-75	- 150735.962	- 39160.959	+ 2661.727430	+ 2224.881582
45-74	- 150738.727	- 39160.715	+ 2360.759193	+ 2183.432830
45-31	- 150739.269	- 39173.901	+ 2384.217335	+ 2861.964027
			+ 10103.942656	+ 10176.773474
		倍面積	= 72.830818	
		面積	= 36.415409	

21 LOT

点 名	X	Y	(X-X0)*(YN-1-Y0)	(XN-1-X0)*(Y-Y0)
X0·Y0	- 150700.000	- 39100.000		
45-30	- 150749.152	- 39173.496		
45-31	- 150739.269	- 39173.901	+ 2886.114424	+ 3632.381952
45-74	- 150738.727	- 39160.715	+ 2861.964027	+ 2384.217335

* * * * * 各 筆 面 積 計 算 書 * * * * *

点 名	X	Y	(X-X0)*(YN-1-Y0)	(XN-1-X0)*(Y-Y0)
45-73	- 150748.593	- 39159.846	+ 2950.323995	+ 2317.656042
45-30	- 150749.152	- 39173.496	+ 2941.550592	+ 3571.391128
			+ 11639.953038	+ 11905.646457
		倍面積	= 265.693419	
		面積	= 132.846709	

22 LOT

点 名	X	Y	(X-X0)*(YN-1-Y0)	(XN-1-X0)*(Y-Y0)
X0-Y0	- 150700.000	- 39100.000		
45-29	- 150763.670	- 39172.901		
45-30	- 150749.152	- 39173.496	+ 3583.229952	+ 4679.490320
45-73	- 150748.593	- 39159.846	+ 3571.391128	+ 2941.550592
K2-12	- 150756.023	- 39159.277	+ 3352.752458	+ 2880.447261
45-72	- 150763.083	- 39158.648	+ 3739.370991	+ 3285.636904
45-29	- 150763.670	- 39172.901	+ 3734.118160	+ 4598.813783
			+ 17980.862689	+ 18385.938860
		倍面積	= 405.076171	
		面積	= 202.538085	

23 LOT

点 名	X	Y	(X-X0)*(YN-1-Y0)	(XN-1-X0)*(Y-Y0)
X0-Y0	- 150700.000	- 39100.000		
45-28	- 150777.533	- 39172.333		
45-29	- 150763.670	- 39172.901	+ 4605.442110	+ 5652.233233
45-72	- 150763.083	- 39158.648	+ 4598.813783	+ 3734.118160
45-71	- 150776.931	- 39157.414	+ 4511.849288	+ 3621.847362
45-28	- 150777.533	- 39172.333	+ 4451.479662	+ 5564.650023
			+ 18167.584843	+ 18572.848778
		倍面積	= 405.263935	
		面積	= 202.631967	

24 LOT

点 名	X	Y	(X-X0)*(YN-1-Y0)	(XN-1-X0)*(Y-Y0)
X0-Y0	- 150700.000	- 39100.000		
45-27	- 150778.645	- 39172.287		
45-28	- 150777.533	- 39172.333	+ 5604.627971	+ 5688.628785
45-71	- 150776.931	- 39157.414	+ 5564.650023	+ 4451.479662
K2-13	- 150779.424	- 39157.192	+ 4560.049536	+ 4399.837752
K2-14	- 150779.181	- 39154.851	+ 4528.519752	+ 4356.485824
45-62	- 150780.329	- 39154.786	+ 4406.125979	+ 4338.010266
45-68	- 150780.482	- 39156.294	+ 4409.286852	+ 4522.040726
45-69	- 150780.677	- 39158.230	+ 4541.631038	+ 4686.466860

* * * * * 各 筆 面 積 計 算 書 * * * * *

点 名	X	Y	(X-X0)*(Yn-1-Y0)	(Xn-1-X0)*(Y-Y0)
45-70	- 150778.104	- 39158.427	+ 4547.995920	+ 4713.715079
45-27	- 150778.645	- 39172.287	+ 4594.991415	+ 5645.903848
			+ 42757.878486	+ 42802.568802
		倍面積	= 44.690316	
		面積	= 22.345158	

25 LOT

点 名	X	Y	(X-X0)*(Yn-1-Y0)	(Xn-1-X0)*(Y-Y0)
X0-Y0	- 150700.000	- 39100.000		
45-26	- 150788.194	- 39171.895		
45-27	- 150778.645	- 39172.287	+ 5654.182275	+ 6375.279678
45-70	- 150778.104	- 39158.427	+ 5645.903848	+ 4594.991415
45-69	- 150780.677	- 39158.230	+ 4713.715079	+ 4547.995920
45-68	- 150780.482	- 39156.294	+ 4686.466860	+ 4541.631038
45-67	- 150787.455	- 39155.889	+ 4923.191770	+ 4498.058498
45-26	- 150788.194	- 39171.895	+ 4929.074466	+ 6287.577225
			+ 30552.534298	+ 30845.533774
		倍面積	= 292.999476	
		面積	= 146.499738	

26 LOT

点 名	X	Y	(X-X0)*(Yn-1-Y0)	(Xn-1-X0)*(Y-Y0)
X0-Y0	- 150700.000	- 39100.000		
45-62	- 150780.329	- 39154.786		
45-61	- 150787.455	- 39154.380	+ 4791.309630	+ 4368.291020
45-67	- 150787.455	- 39155.889	+ 4755.802900	+ 4887.772495
45-68	- 150780.482	- 39156.294	+ 4498.058498	+ 4923.191770
45-62	- 150780.329	- 39154.786	+ 4522.040726	+ 4409.286852
			+ 18567.211754	+ 18588.542137
		倍面積	= 21.330383	
		面積	= 10.665191	

27 LOT

点 名	X	Y	(X-X0)*(Yn-1-Y0)	(Xn-1-X0)*(Y-Y0)
X0-Y0	- 150700.000	- 39100.000		
45-25	- 150790.223	- 39171.812		
45-26	- 150788.194	- 39171.895	+ 6333.387528	+ 6486.582585
45-67	- 150787.455	- 39155.889	+ 6287.577225	+ 4929.074466
45-66	- 150789.483	- 39155.771	+ 5001.115387	+ 4877.452805
45-25	- 150790.223	- 39171.812	+ 5031.826933	+ 6425.953196
			+ 22653.907073	+ 22719.063052
		倍面積	= 65.155979	
		面積	= 32.577989	

* * * * * 各 筆 面 積 計 算 書 * * * * *

28 LOT

点 名	X	Y	(X-X0)*(YN-1-Y0)	(XN-1-X0)*(Y-Y0)
X0·Y0	- 150700.000	- 39100.000		
45-61	- 150787.455	- 39154.380		
45-60	- 150789.483	- 39154.265	+ 4866.085540	+ 4745.745575
45-66	- 150789.483	- 39155.771	+ 4855.794995	+ 4990.556393
45-67	- 150787.455	- 39155.889	+ 4877.452805	+ 5001.115387
45-61	- 150787.455	- 39154.380	+ 4887.772495	+ 4755.802900
			+ 19487.105835	+ 19493.220255
		倍面積	= 6.114420	
		面積	= 3.057210	

29 LOT

点 名	X	Y	(X-X0)*(YN-1-Y0)	(XN-1-X0)*(Y-Y0)
X0·Y0	- 150700.000	- 39100.000		
45-24	- 150791.129	- 39171.775		
45-25	- 150790.223	- 39171.812	+ 6475.755825	+ 6544.155748
45-66	- 150789.483	- 39155.771	+ 6425.953196	+ 5031.826933
45-65	- 150790.388	- 39155.719	+ 5041.029148	+ 4985.903277
45-24	- 150791.129	- 39171.775	+ 5077.616751	+ 6487.598700
			+ 23020.354920	+ 23049.484658
		倍面積	= 29.129738	
		面積	= 14.564869	

30 LOT

点 名	X	Y	(X-X0)*(YN-1-Y0)	(XN-1-X0)*(Y-Y0)
X0·Y0	- 150700.000	- 39100.000		
45-60	- 150789.483	- 39154.265		
45-59	- 150790.390	- 39154.213	+ 4905.013350	+ 4851.141879
45-65	- 150790.388	- 39155.719	+ 4900.204644	+ 5036.440410
45-66	- 150789.483	- 39155.771	+ 4985.903277	+ 5041.029148
45-60	- 150789.483	- 39154.265	+ 4990.556393	+ 4855.794995
			+ 19781.677664	+ 19784.406432
		倍面積	= 2.728768	
		面積	= 1.364384	

31 LOT

点 名	X	Y	(X-X0)*(YN-1-Y0)	(XN-1-X0)*(Y-Y0)
X0·Y0	- 150700.000	- 39100.000		
45-23	- 150792.628	- 39171.714		
45-24	- 150791.129	- 39171.775	+ 6535.225106	+ 6648.374700
45-65	- 150790.388	- 39155.719	+ 6487.598700	+ 5077.616751

* * * * * 各 筆 面 積 計 算 書 * * * * *

点 名	X	Y	(X-X0)*(YN-1-Y0)	(XN-1-X0)*(Y-Y0)
45-64	- 150791.885	- 39155.632	+ 5119.740315	+ 5028.465216
45-23	- 150792.628	- 39171.714	+ 5153.080896	+ 6589.440890
			+ 23295.645017	+ 23343.897557
		倍面積	= 48.252540	
		面積	= 24.126270	

32 LOT

点 名	X	Y	(X-X0)*(YN-1-Y0)	(XN-1-X0)*(Y-Y0)
X0-Y0	- 150700.000	- 39100.000		
45-59	- 150790.390	- 39154.213		
45-58	- 150799.167	- 39153.713	+ 5376.140571	+ 4855.118070
45-63	- 150799.290	- 39155.202	+ 5333.163770	+ 5474.216734
45-65	- 150790.388	- 39155.719	+ 4989.598376	+ 5532.339510
45-59	- 150790.390	- 39154.213	+ 5036.440410	+ 4900.204644
			+ 20735.343127	+ 20761.878958
		倍面積	= 26.535831	
		面積	= 13.267915	

33 LOT

点 名	X	Y	(X-X0)*(YN-1-Y0)	(XN-1-X0)*(Y-Y0)
X0-Y0	- 150700.000	- 39100.000		
45-22	- 150803.634	- 39171.263		
45-23	- 150792.628	- 39171.714	+ 6600.949164	+ 7432.008676
45-64	- 150791.885	- 39155.632	+ 6589.440890	+ 5153.080896
45-63	- 150799.290	- 39155.202	+ 5523.701280	+ 5072.235770
45-58	- 150799.167	- 39153.713	+ 5474.216734	+ 5333.163770
45-57	- 150802.868	- 39153.502	+ 5525.348884	+ 5305.632834
45-22	- 150803.634	- 39171.263	+ 5544.626268	+ 7330.682284
			+ 35258.283220	+ 35626.804230
		倍面積	= 368.521010	
		面積	= 184.260505	

34 LOT

点 名	X	Y	(X-X0)*(YN-1-Y0)	(XN-1-X0)*(Y-Y0)
X0-Y0	- 150800.000	- 39100.000		
45-21	- 150806.833	- 39171.131		
45-22	- 150803.634	- 39171.263	+ 258.490054	+ 486.940079
45-57	- 150802.868	- 39153.502	+ 204.382284	+ 194.426268
45-56	- 150806.065	- 39153.320	+ 324.489630	+ 152.921760
45-21	- 150806.833	- 39171.131	+ 364.335560	+ 431.409515
			+ 1151.697528	+ 1265.697622
		倍面積	= 114.000094	
		面積	= 57.000047	

* * * * * 各 筆 面 積 計 算 書 * * * * *

35 LOT

点 名	X	Y	(X-X0)*(YN-1-Y0)	(XN-1-X0)*(Y-Y0)
X0-Y0	- 150800.000	- 39100.000		
45-20	- 150816.142	- 39170.749		
45-21	- 150806.833	- 39171.131	+ 483.427917	+ 1148.196602
45-56	- 150806.065	- 39153.320	+ 431.409515	+ 364.335560
45-55	- 150815.351	- 39152.791	+ 818.515320	+ 320.177415
45-20	- 150816.142	- 39170.749	+ 852.152322	+ 1086.067899
			+ 2585.505074	+ 2918.777476
		倍面積	= 333.272402	
		面積	= 166.636201	

36 LOT

点 名	X	Y	(X-X0)*(YN-1-Y0)	(XN-1-X0)*(Y-Y0)
X0-Y0	- 150800.000	- 39100.000		
45-19	- 150846.107	- 39169.520		
45-20	- 150816.142	- 39170.749	+ 1122.191840	+ 3262.024143
45-55	- 150815.351	- 39152.791	+ 1086.067899	+ 852.152322
45-54	- 150845.342	- 39151.083	+ 2393.649522	+ 784.175133
45-19	- 150846.107	- 39169.520	+ 2355.283881	+ 3152.175840
			+ 6957.193142	+ 8050.527438
		倍面積	= 1093.334296	
		面積	= 546.667148	

37 LOT

点 名	X	Y	(X-X0)*(YN-1-Y0)	(XN-1-X0)*(Y-Y0)
X0-Y0	- 150800.000	- 39100.000		
45-18	- 150861.095	- 39168.905		
45-19	- 150846.107	- 39169.520	+ 3177.002835	+ 4247.324400
45-54	- 150845.342	- 39151.083	+ 3152.175840	+ 2355.283881
45-53	- 150860.320	- 39150.230	+ 3081.326560	+ 2277.528660
45-18	- 150861.095	- 39168.905	+ 3068.801850	+ 4156.349600
			+ 12479.307085	+ 13036.486541
		倍面積	= 557.179456	
		面積	= 278.589728	

38 LOT

点 名	X	Y	(X-X0)*(YN-1-Y0)	(XN-1-X0)*(Y-Y0)
X0-Y0	- 150800.000	- 39100.000		
K2-15	- 150881.612	- 39149.017		
45-8	- 150883.034	- 39165.853	+ 4070.077578	+ 5374.395036
45-9	- 150881.057	- 39168.086	+ 5337.846621	+ 5653.452924

* * * * * 各 筆 面 積 計 算 書 * * * * *

点 名	X	Y	(X-X0)*(Y1-Y0)	(XN-1-X0)*(Y-Y0)
45-18	- 150861.095	- 39168.905	+ 4159.714170	+ 5585.232585
45-53	- 150860.320	- 39150.230	+ 4156.349600	+ 3068.801850
K2-15	- 150881.612	- 39149.017	+ 4099.370760	+ 2956.705440
			+ 21823.358729	+ 22638.587835
		倍面積	= 815.229106	
		面積	= 407.614553	

1 スミリ

点 名	X	Y	(X-X0)*(Y1-Y0)	(XN-1-X0)*(Y-Y0)
X0-Y0	- 150800.000	- 39100.000		
45-1	- 150883.215	- 39167.998		
45-8	- 150883.034	- 39165.853	+ 5646.145932	+ 5479.957395
45-9	- 150881.057	- 39168.086	+ 5337.846621	+ 5653.452924
45-1	- 150883.215	- 39167.998	+ 5665.776490	+ 5511.713886
			+ 16649.769043	+ 16645.124205
		倍面積	= 4.644838	
		面積	= 2.322419	

2 スミリ

点 名	X	Y	(X-X0)*(Y1-Y0)	(XN-1-X0)*(Y-Y0)
X0-Y0	- 150700.000	- 39100.000		
45-2	- 150727.336	- 39174.390		
45-10	- 150729.419	- 39174.305	+ 2188.479410	+ 2031.201480
45-11	- 150727.202	- 39172.304	+ 2021.244610	+ 2127.111376
45-2	- 150727.336	- 39174.390	+ 1976.502144	+ 2023.556780
			+ 6186.226164	+ 6181.869636
		倍面積	= 4.356528	
		面積	= 2.178264	

3 スミリ

点 名	X	Y	(X-X0)*(Y1-Y0)	(XN-1-X0)*(Y-Y0)
X0-Y0	- 150700.000	- 39000.000		
45-3	- 150722.544	- 39100.020		
45-12	- 150722.683	- 39102.177	+ 2268.753660	+ 2303.478288
45-13	- 150724.675	- 39099.905	+ 2521.217475	+ 2266.145115
45-3	- 150722.544	- 39100.020	+ 2252.258320	+ 2467.993500
			+ 7042.229455	+ 7037.616903
		倍面積	= 4.612552	
		面積	= 2.306276	

* * * * * 各 筆 面 積 計 算 書 * * * * *

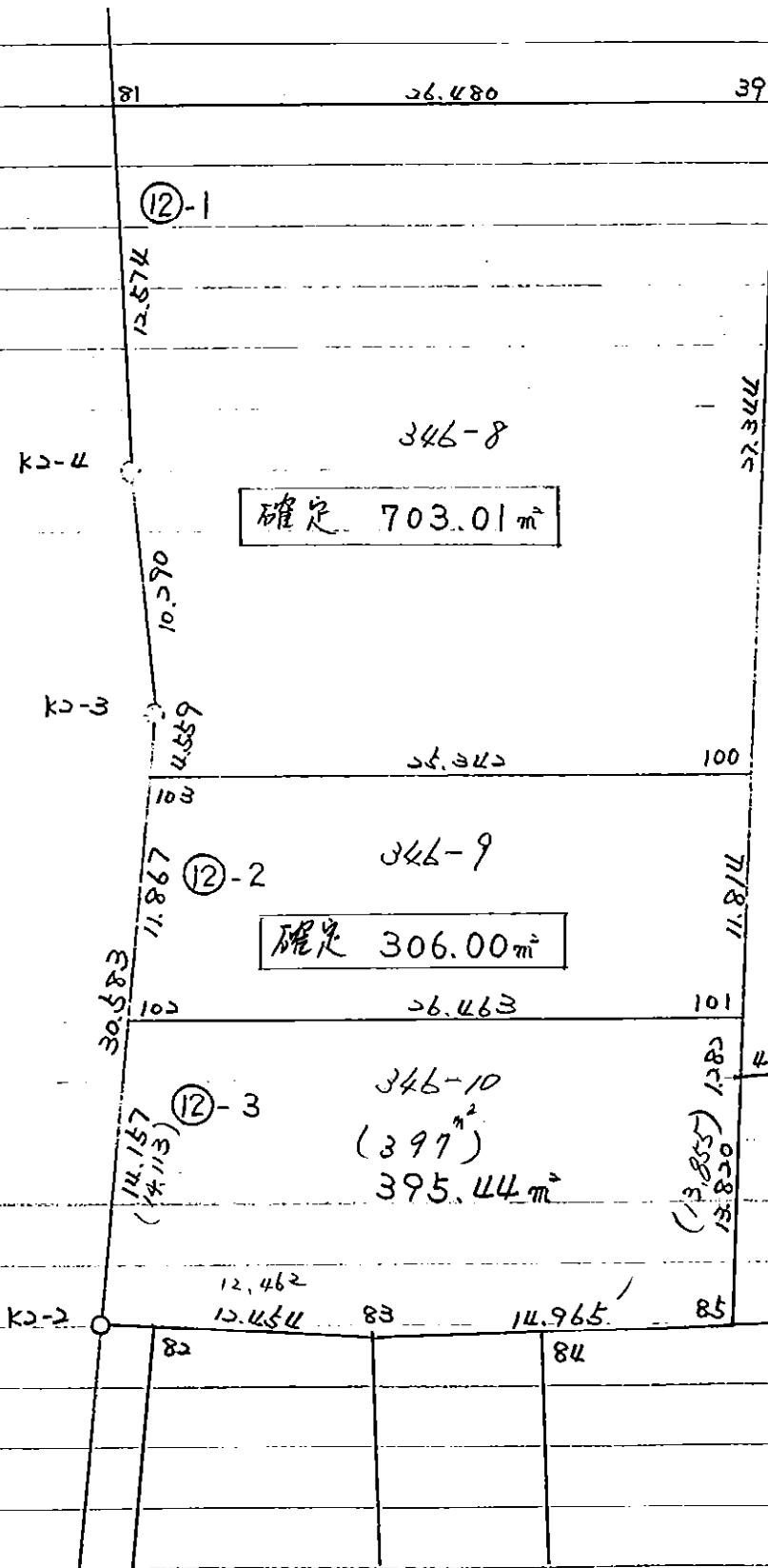
5 区判

点 名	X	Y	(X-X0)*(YN-1-Y0)	(XN-1-X0)*(Y-Y0)
X0-Y0	- 150800.000	- 39000.000		
45-5	- 150845.144	- 39045.957		
45-14	- 150845.320	- 39048.119	+ 2082.771240	+ 2172.284136
45-15	- 150847.334	- 39045.950	+ 2277.664746	+ 2082.454000
45-5	- 150845.144	- 39045.957	+ 2074.366800	+ 2175.328638
			+ 6434.802786	+ 6430.066774
		倍面積	= 4.736012	
		面積	= 2.368006	

6 区判

点 名	X	Y	(X-X0)*(YN-1-Y0)	(XN-1-X0)*(Y-Y0)
X0-Y0	- 150800.000	- 39000.000		
45-6	- 150877.288	- 39045.858		
45-16	- 150875.230	- 39045.864	+ 3449.897340	+ 3544.736832
45-17	- 150877.340	- 39047.918	+ 3547.121760	+ 3604.871140
45-6	- 150877.288	- 39045.858	+ 3703.486384	+ 3546.657720
			+ 10700.505484	+ 10696.265692
		倍面積	= 4.239792	
		面積	= 2.119896	

仲野 346-1 (A)(B) 分筆 H.3.11.18.



確定 703.01 m²

確定 306.00 m²

346-10
(397)
395.44 m²

仲野 346-1
(157 m²)

* () 書は仮換地, 地積 & 寸法

* * * * 12-1 LOT

面積計算書 * * * * NO 1

点名	X	DX	DMD.1	Y	DY	DMD.2	DX * DMD.2	DY * DMD.1
45-39	- 150808.610		- 39095.386					
45-100	- 150835.915	+ 27.305	+ 27.305	- 39093.916	- 1.470	- 1.470	- 40.138350	- 40.138350
45-103	- 150837.278	+ 1.363	+ 55.973	- 39119.221	+ 25.305	+ 22.365	+ 30.483495	+ 1416.396765
K2-3	- 150832.723	- 4.555	+ 52.781	- 39119.035	- 0.186	+ 47.484	- 216.289620	- 9.817266
K2-4	- 150822.545	- 10.178	+ 38.048	- 39120.551	+ 1.516	+ 48.814	- 496.828892	+ 57.680768
45-81	- 150810.036	- 12.509	+ 15.361	- 39121.828	+ 1.277	+ 51.607	- 645.551963	+ 19.615997
45-39	- 150808.610	- 1.426	+ 1.426	- 39095.386	- 26.442	+ 26.442	- 37.706292	- 37.706292
		+ 28.668			+ 28.098		+ 30.483495	+ 1493.693530
		- 28.668			- 28.098		- 1436.515117	- 87.661908
							- 1406.031622	+ 1406.031622

面積 = 703.015811

* * * * 12-2 LOT

面積計算書 * * * * NO 1

点名	X	DX	DMD.1	Y	DY	DMD.2	DX * DMD.2	DY * DMD.1
45-100	- 150835.915			- 39093.916				
45-101	- 150847.712	+ 11.797	+ 11.797	- 39093.281	- 0.635	- 0.635	- 7.491095	- 7.491095
45-102	- 150849.135	+ 1.423	+ 25.017	- 39119.706	+ 26.425	+ 25.155	+ 35.795565	+ 661.074225
45-103	- 150837.278	- 11.857	+ 14.583	- 39119.221	- 0.485	+ 51.095	- 605.833415	- 7.072755
45-100	- 150835.915	- 1.363	+ 1.363	- 39093.916	- 25.305	+ 25.305	- 34.490715	- 34.490715
		+ 13.220			+ 26.425		+ 35.795565	+ 661.074225
		- 13.220			- 26.425		- 647.815225	- 49.054565
							- 612.019660	+ 612.019660
							面積 =	306.009830

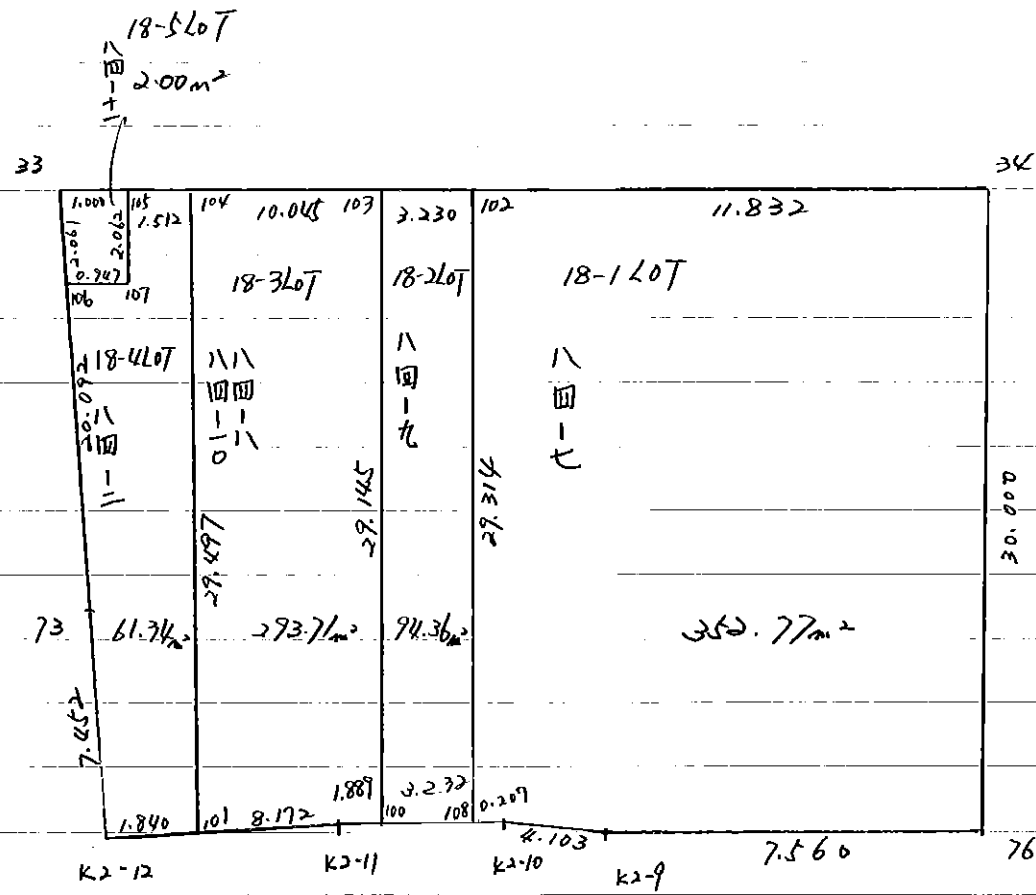
* * * * 12-3 LOT

面積計算書 * * * * NO 1

点名	X	DX	DMD.1	Y	DY	DMD.2	DX * DMD.2	DY * DMD.1
45-101	- 150847.712		- 39093.281					
45-4	- 150848.992	+ 1.280	+ 1.280	- 39093.212	- 0.069	- 0.069	- 0.088320	- 0.088320
45-85	- 150862.808	+ 13.816	+ 16.376	- 39092.870	- 0.342	- 0.480	- 6.631680	- 5.600592
45-83	- 150863.188	+ 0.380	+ 30.572	- 39107.830	+ 14.960	+ 14.138	+ 5.372440	+ 457.357120
K2-2	- 150863.280	+ 0.092	+ 31.044	- 39120.284	+ 12.454	+ 41.552	+ 3.822784	+ 386.621976
45-102	- 150849.135	- 14.145	+ 16.991	- 39119.706	- 0.578	+ 53.428	- 755.739060	- 9.820798
45-101	- 150847.712	- 1.423	+ 1.423	- 39093.281	- 26.425	+ 26.425	- 37.602775	- 37.602775
		+ 15.568			+ 27.414		+ 9.195224	+ 843.979096
		- 15.568			- 27.414		- 800.061835	- 53.112485
							- 790.866611	+ 790.866611

面積 = ~~395.433805~~
 395.44 確定後につき端数調整

45 Block



* * * * 18-1 LOT

面 積 計 算 書 * * * * NO 1

点 名	X	DX	DMD.1	Y	DY	DMD.2	DX * DMD.2	DY * DMD.1	
45-102	- 150725.510			- 39146.037					
45-34	- 150724.749	- 0.761	- 0.761	- 39134.229	- 11.808	- 11.808	+ 8.985888	+ 8.985888	
45-76	- 150754.691	+ 29.942	+ 28.420	- 39132.364	- 1.865	- 25.481	- 762.952102	- 53.003300	
K2-9	- 150755.058	+ 0.367	+ 58.729	- 39139.915	+ 7.551	- 19.795	+ 7.264765	+ 443.462679	
K2-10	- 150754.765	- 0.293	+ 58.803	- 39144.008	+ 4.093	- 8.151	+ 2.388243	+ 240.680679	
45-108	- 150754.768	+ 0.003	+ 58.513	- 39144.215	+ 0.207	- 3.851	+ 0.011553	+ 12.112191	
45-102	- 150725.510	- 29.258	+ 29.258	- 39146.037	+ 1.822	- 1.822	+ 53.308076	+ 53.308076	
		+ 30.312			+ 13.673		+ 64.682207	+ 758.549513	
		- 30.312			- 13.673		- 770.228420	- 53.003300	
							- 705.546213	+ 705.546213	
面 積 =							352.773106		

点 名	X	DX	DMD.1	Y	DY	DMD.2	DX * DMD.2	DY * DMD.1
45-103	- 150725.718			- 39149.259				
45-102	- 150725.510	- 0.208	- 0.208	- 39146.037	- 3.222	- 3.222	+ 0.670176	+ 0.670176
45-108	- 150754.768	+ 29.258	+ 28.842	- 39144.215	- 1.822	- 8.266	- 241.846628	- 52.550124
45-100	- 150754.807	+ 0.039	+ 58.139	- 39147.447	+ 3.232	- 6.856	+ 0.267384	+ 187.905248
45-103	- 150725.718	- 29.089	+ 29.089	- 39149.259	+ 1.812	- 1.812	+ 52.709268	+ 52.709268
		+ 29.297			+ 5.044		+ 53.379444	+ 241.284692
		- 29.297			- 5.044		- 242.114012	- 52.550124
							- 188.734568	+ 188.734568

面積 = 94.367284

* * * * 18-3 LOT

面積計算書 * * * * NO 1

点名	X	DX	DMD.1	Y	DY	DMD.2	DX * DMD.2	DY * DMD.1
45-104	- 150726.364			- 39159.283				
45-103	- 150725.718	- 0.646	- 0.646	- 39149.259	- 10.024	- 10.024	+ 6.475504	+ 6.475504
45-100	- 150754.807	+ 29.089	+ 27.797	- 39147.447	- 1.812	- 21.860	- 635.885540	- 50.368164
K2-11	- 150754.830	+ 0.023	+ 56.909	- 39149.336	+ 1.889	- 21.783	- 0.501009	+ 107.501101
45-101	- 150755.804	+ 0.974	+ 57.906	- 39157.450	+ 8.114	- 11.780	- 11.473720	+ 469.849284
45-104	- 150726.364	- 29.440	+ 29.440	- 39159.283	+ 1.833	- 1.833	+ 53.963520	+ 53.963520
		+ 30.086			+ 11.836		+ 60.439024	+ 637.789409
		- 30.086			- 11.836		- 647.860269	- 50.368164
							- 587.421245	+ 587.421245

面積 = 293.710622

* * * * 18-4 LOT

面積計算書

* * * * NO 1

点名	X	DX	DMD.1	Y	DY	DMD.2	DX * DMD.2	DY * DMD.1
45-105	- 150726.461			- 39160.792				
45-104	- 150726.364	- 0.097	- 0.097	- 39159.283	- 1.509	- 1.509	+ 0.146373	+ 0.146373
45-101	- 150755.804	+ 29.440	+ 29.246	- 39157.450	- 1.833	- 4.851	- 142.813440	- 53.607918
K2-12	- 150756.023	+ 0.219	+ 58.905	- 39159.277	+ 1.827	- 4.857	+ 1.063683	+ 107.619435
45-73	- 150748.593	- 7.430	+ 51.694	- 39159.846	+ 0.569	- 2.461	+ 18.285230	+ 29.413886
45-106	- 150728.578	- 20.015	+ 24.249	- 39161.609	+ 1.763	- 0.129	+ 2.581935	+ 42.750987
45-107	- 150728.519	- 0.059	+ 4.175	- 39160.664	- 0.945	+ 0.689	- 0.040651	- 3.945375
45-105	- 150726.461	- 2.058	+ 2.058	- 39160.792	+ 0.128	- 0.128	+ 0.263424	+ 0.263424
		+ 29.659			+ 4.287		+ 21.276962	+ 180.194105
		- 29.659			- 4.287		- 143.917774	- 57.553293

面積 = ~~61.320406~~
61.34

確定後に端数調整

* * * * 18-5 LOT

面積計算書

* * * * NO 1

点名	X	DX	DMD.1	Y	DY	DMD.2	DX * DMD.2	DY * DMD.1
45-33	- 150726.525			- 39161.790				
45-105	- 150726.461	- 0.064	- 0.064	- 39160.792	- 0.998	- 0.998	+ 0.063872	+ 0.063872
45-107	- 150728.519	+ 2.058	+ 1.930	- 39160.664	- 0.128	- 2.124	- 4.371192	- 0.247040
45-106	- 150728.578	+ 0.059	+ 4.047	- 39161.609	+ 0.945	- 1.307	+ 0.077113	+ 3.824415
45-33	- 150726.525	- 2.053	+ 2.053	- 39161.790	+ 0.181	- 0.181	+ 0.371593	+ 0.371593
		+ 2.117			+ 1.126		+ 0.435465	+ 4.259880
		- 2.117			- 1.126		- 4.448305	- 0.247040
							- 4.012840	+ 4.012840
						面積 =	2.006420	