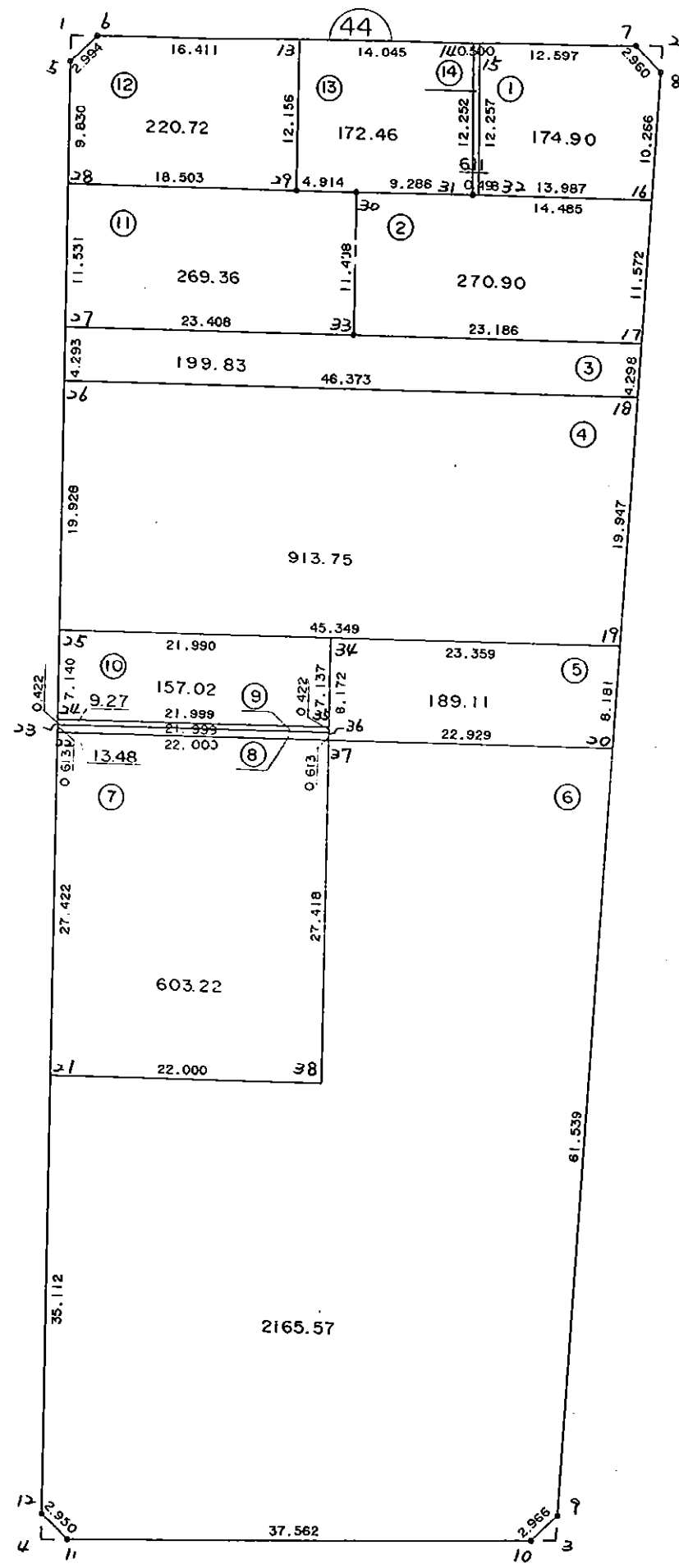


4 4 B L O C K



* * * 各筆面積 集計表 * * *

街区名・筆名	各筆面積	隅切面積
44 BLOCK	5365.78	
1 LOT	174.90	
2 LOT	270.90	
3 LOT	199.83	
4 LOT	913.75	
5 LOT	189.11	
6 LOT	2165.57	
7 LOT	603.22	
8 LOT	13.48	
9 LOT	9.27	
10 LOT	157.02	
11 LOT	269.36	
12 LOT	220.72	
13 LOT	172.46	
14 LOT	6.11	
1 スミキリ		2.21
2 スミキリ		2.32
3 スミキリ		2.03
4 スミキリ		2.23
合計 =	5365.70	8.79

* * * * * 各 筆 面 積 計 算 書 * * * * *

44 BLOCK

点 名	X	Y	(X-X0)*(YN-1-Y0)	(XN-1-X0)*(Y-Y0)
X0·Y0	- 150700.000	- 39000.000		
44-5	- 150724.261	- 39093.923		
44-6	- 150722.032	- 39091.924	+ 2069.311536	+ 2230.168164
44-7	- 150719.234	- 39048.462	+ 1768.066216	+ 1067.714784
44-8	- 150721.256	- 39046.300	+ 1030.108272	+ 890.534200
44-9	- 150837.059	- 39045.994	+ 6345.831700	+ 977.648464
44-10	- 150839.254	- 39047.989	+ 6404.848476	+ 6577.324351
44-11	- 150842.326	- 39085.425	+ 6830.082414	+ 11895.772950
44-12	- 150840.382	- 39087.644	+ 11992.132350	+ 12474.019944
44-5	- 150724.261	- 39093.923	+ 2126.331084	+ 13185.098586
			+ 38566.712048	+ 49298.281443
		倍面積	= 10731.569395	
		面積	= 5365.784697	

1 LOT

点 名	X	Y	(X-X0)*(YN-1-Y0)	(XN-1-X0)*(Y-Y0)
X0·Y0	- 150700.000	- 39000.000		
44-7	- 150719.234	- 39048.462		
44-8	- 150721.256	- 39046.300	+ 1030.108272	+ 890.534200
44-16	- 150731.522	- 39046.273	+ 1459.468600	+ 983.578888
44-32	- 150732.274	- 39060.240	+ 1493.414802	+ 1898.885280
44-15	- 150720.043	- 39061.033	+ 1207.390320	+ 1969.779042
44-7	- 150719.234	- 39048.462	+ 1173.908722	+ 971.323866
			+ 6364.290716	+ 6714.101276
		倍面積	= 349.810560	
		面積	= 174.905280	

2 LOT

点 名	X	Y	(X-X0)*(YN-1-Y0)	(XN-1-X0)*(Y-Y0)
X0·Y0	- 150700.000	- 39000.000		
44-16	- 150731.522	- 39046.273		
44-17	- 150743.094	- 39046.242	+ 1994.088662	+ 1457.640324
44-33	- 150744.324	- 39069.395	+ 2049.630408	+ 2990.508130
44-30	- 150732.852	- 39070.007	+ 2279.764540	+ 3102.990268
44-31	- 150732.301	- 39060.737	+ 2261.296107	+ 1995.331924
44-16	- 150731.522	- 39046.273	+ 1914.551714	+ 1494.664173
			+ 10499.331431	+ 11041.134819
		倍面積	= 541.803388	
		面積	= 270.901694	

* * * * * 各 筆 面 積 計 算 書 * * * * *

3 LOT

点 名	X	Y	(X-X0)*(YN-1-Y0)	(XN-1-X0)*(Y-Y0)
X0·Y0	- 150700.000	- 39000.000		
44-17	- 150743.094	- 39046.242		
44-18	- 150747.392	- 39046.231	+ 2191.500864	+ 1992.278714
44-26	- 150749.878	- 39092.537	+ 2305.909818	+ 4385.513504
44-27	- 150745.591	- 39092.769	+ 4218.854367	+ 4627.132182
44-33	- 150744.324	- 39069.395	+ 4111.893156	+ 3163.787445
44-17	- 150743.094	- 39046.242	+ 2990.508130	+ 2049.630408
			+ 15818.666335	+ 16218.342253
		倍面積	= 399.675918	
		面積	= 199.837959	

4 LOT

点 名	X	Y	(X-X0)*(YN-1-Y0)	(XN-1-X0)*(Y-Y0)
X0·Y0	- 150700.000	- 39000.000		
44-18	- 150747.392	- 39046.231		
44-19	- 150767.339	- 39046.178	+ 3113.149309	+ 2188.467776
44-25	- 150769.777	- 39091.461	+ 3222.162306	+ 6158.892279
44-26	- 150749.878	- 39092.537	+ 4561.891758	+ 6456.954249
44-18	- 150747.392	- 39046.231	+ 4385.513504	+ 2305.909818
			+ 15282.716877	+ 17110.224122
		倍面積	= 1827.507245	
		面積	= 913.753622	

5 LOT

点 名	X	Y	(X-X0)*(YN-1-Y0)	(XN-1-X0)*(Y-Y0)
X0·Y0	- 150700.000	- 39000.000		
44-19	- 150767.339	- 39046.178		
44-20	- 150775.520	- 39046.156	+ 3487.362560	+ 3108.098884
44-37	- 150776.755	- 39069.052	+ 3542.703780	+ 5214.807040
44-34	- 150768.595	- 39069.503	+ 4736.621940	+ 5334.702765
44-19	- 150767.339	- 39046.178	+ 4680.262517	+ 3167.579910
			+ 16446.950797	+ 16825.188599
		倍面積	= 378.237802	
		面積	= 189.118901	

6 LOT

点 名	X	Y	(X-X0)*(YN-1-Y0)	(XN-1-X0)*(Y-Y0)
X0·Y0	- 150700.000	- 39000.000		
44-9	- 150837.059	- 39045.994		
44-10	- 150839.254	- 39047.989	+ 6404.848476	+ 6577.324351

* * * * * 各 筆 面 積 計 算 書 * * * * *

点 名	X	Y	(X-X0)*(YN-1-Y0)	(XN-1-X0)*(Y-Y0)
44-11	- 150842.326	- 39085.425	+ 6830.082414	+ 11895.772950
44-12	- 150840.382	- 39087.644	+ 11992.132350	+ 12474.019944
44-21	- 150805.321	- 39089.540	+ 9230.753724	+ 12569.804280
44-38	- 150804.133	- 39067.572	+ 9324.068820	+ 7116.750612
44-37	- 150776.755	- 39069.052	+ 5186.488860	+ 7190.591916
44-20	- 150775.520	- 39046.156	+ 5214.807040	+ 3542.703780
44-9	- 150837.059	- 39045.994	+ 6326.095204	+ 3473.466880
			+ 60509.276888	+ 64840.434713
		倍面積	= 4331.157825	
		面積	= 2165.578912	

7 LOT

点 名	X	Y	(X-X0)*(YN-1-Y0)	(XN-1-X0)*(Y-Y0)
X0·Y0	- 150700.000	- 39000.000		
44-21	- 150805.321	- 39089.540		
44-22	- 150777.940	- 39091.020	+ 6978.747600	+ 9586.317420
44-37	- 150776.755	- 39069.052	+ 6986.240100	+ 5381.912880
44-38	- 150804.133	- 39067.572	+ 7190.591916	+ 5186.488860
44-21	- 150805.321	- 39089.540	+ 7116.750612	+ 9324.068820
			+ 28272.330228	+ 29478.787980
		倍面積	= 1206.457752	
		面積	= 603.228876	

8 LOT

点 名	X	Y	(X-X0)*(YN-1-Y0)	(XN-1-X0)*(Y-Y0)
X0·Y0	- 150700.000	- 39000.000		
44-22	- 150777.940	- 39091.020		
44-23	- 150777.328	- 39091.053	+ 7038.394560	+ 7096.670820
44-36	- 150776.143	- 39069.086	+ 6933.048579	+ 5342.282208
44-37	- 150776.755	- 39069.052	+ 5302.695930	+ 5257.826436
44-22	- 150777.940	- 39091.020	+ 5381.912880	+ 6986.240100
			+ 24656.051949	+ 24683.019564
		倍面積	= 26.967615	
		面積	= 13.483807	

9 LOT

点 名	X	Y	(X-X0)*(YN-1-Y0)	(XN-1-X0)*(Y-Y0)
X0·Y0	- 150700.000	- 39000.000		
44-23	- 150777.328	- 39091.053		
44-24	- 150776.907	- 39091.076	+ 7002.613071	+ 7042.724928
44-35	- 150775.722	- 39069.109	+ 6896.456872	+ 5314.965863
44-36	- 150776.143	- 39069.086	+ 5262.166587	+ 5231.330092

* * * * * 各 筆 面 積 計 算 書 * * * * *

点 名	X	Y	(X-X0)*(YN-1-Y0)	(XN-1-X0)*(Y-Y0)
44-23	- 150777.328	- 39091.053	+ 5342.282208	+ 6933.048579
			+ 24503.518738	+ 24522.069462
		倍面積	= 18.550724	
		面積	= 9.275362	

10 LOT

点 名	X	Y	(X-X0)*(YN-1-Y0)	(XN-1-X0)*(Y-Y0)
X0·Y0	- 150700.000	- 39000.000		
44-24	- 150776.907	- 39091.076		
44-25	- 150769.777	- 39091.461	+ 6355.010052	+ 7033.991127
44-34	- 150768.595	- 39069.503	+ 6273.767295	+ 4849.710831
44-35	- 150775.722	- 39069.109	+ 5262.906166	+ 4740.531855
44-24	- 150776.907	- 39091.076	+ 5314.965863	+ 6896.456872
			+ 23206.649376	+ 23520.690685
		倍面積	= 314.041309	
		面積	= 157.020654	

11 LOT

点 名	X	Y	(X-X0)*(YN-1-Y0)	(XN-1-X0)*(Y-Y0)
X0·Y0	- 150700.000	- 39000.000		
44-27	- 150745.591	- 39092.769		
44-28	- 150734.077	- 39093.392	+ 3161.289213	+ 4257.834672
44-29	- 150733.118	- 39074.914	+ 3092.956256	+ 2552.844378
44-30	- 150732.852	- 39070.007	+ 2461.074728	+ 2318.491826
44-33	- 150744.324	- 39069.395	+ 3102.990268	+ 2279.764540
44-27	- 150745.591	- 39092.769	+ 3163.787445	+ 4111.893156
			+ 14982.097910	+ 15520.828572
		倍面積	= 538.730662	
		面積	= 269.365331	

12 LOT

点 名	X	Y	(X-X0)*(YN-1-Y0)	(XN-1-X0)*(Y-Y0)
X0·Y0	- 150700.000	- 39000.000		
44-5	- 150724.261	- 39093.923		
44-6	- 150722.032	- 39091.924	+ 2069.311536	+ 2230.168164
44-13	- 150720.978	- 39075.547	+ 1928.381672	+ 1664.451504
44-29	- 150733.118	- 39074.914	+ 2501.965546	+ 1571.545892
44-28	- 150734.077	- 39093.392	+ 2552.844378	+ 3092.956256
44-5	- 150724.261	- 39093.923	+ 2265.783312	+ 3200.614071
			+ 11318.286444	+ 11759.735887
		倍面積	= 441.449443	
		面積	= 220.724721	

* * * * * 各 筆 面 積 計 算 書 * * * * *

13 LOT

点 名	X	Y	(X-X0)*(YN-1-Y0)	(XN-1-X0)*(Y-Y0)
X0-Y0	- 150700.000	- 39000.000		
44-13	- 150720.978	- 39075.547		
44-14	- 150720.075	- 39061.532	+ 1516.606025	+ 1290.818296
44-31	- 150732.301	- 39060.737	+ 1987.545132	+ 1219.295275
44-30	- 150732.852	- 39070.007	+ 1995.331924	+ 2261.296107
44-29	- 150733.118	- 39074.914	+ 2318.491826	+ 2461.074728
44-13	- 150720.978	- 39075.547	+ 1571.545892	+ 2501.965546
			+ 9389.520799	+ 9734.449952
		倍面積	= 344.929153	
		面積	= 172.464576	

14 LOT

点 名	X	Y	(X-X0)*(YN-1-Y0)	(XN-1-X0)*(Y-Y0)
X0-Y0	- 150700.000	- 39000.000		
44-14	- 150720.075	- 39061.532		
44-15	- 150720.043	- 39061.033	+ 1233.285876	+ 1225.237475
44-32	- 150732.274	- 39060.240	+ 1969.779042	+ 1207.390320
44-31	- 150732.301	- 39060.737	+ 1945.812240	+ 1960.225938
44-14	- 150720.075	- 39061.532	+ 1219.295275	+ 1987.545132
			+ 6368.172433	+ 6380.398865
		倍面積	= 12.226432	
		面積	= 6.113216	

1 区切り

点 名	X	Y	(X-X0)*(YN-1-Y0)	(XN-1-X0)*(Y-Y0)
X0-Y0	- 150700.000	- 39000.000		
44-1	- 150722.168	- 39094.036		
44-5	- 150724.261	- 39093.923	+ 2281.407396	+ 2082.085064
44-6	- 150722.032	- 39091.924	+ 2069.311536	+ 2230.168164
44-1	- 150722.168	- 39094.036	+ 2037.771232	+ 2071.801152
			+ 6388.490164	+ 6384.054380
		倍面積	= 4.435784	
		面積	= 2.217892	

2 区切り

点 名	X	Y	(X-X0)*(YN-1-Y0)	(XN-1-X0)*(Y-Y0)
X0-Y0	- 150700.000	- 39000.000		
44-2	- 150719.095	- 39046.306		
44-7	- 150719.234	- 39048.462	+ 890.649604	+ 925.381890
44-8	- 150721.256	- 39046.300	+ 1030.108272	+ 890.534200

* * * * * 各 筆 面 積 計 算 書 * * * * *

点 名	X	Y	(X-X0)*(YN-1-Y0)	(XN-1-X0)*(Y-Y0)
44-2	- 150719.095	- 39046.306	+ 884.098500	+ 984.280336
			+ 2804.856376	+ 2800.196426
		倍面積	= 4.659950	
		面積	= 2.329975	

3 スミリ

点 名	X	Y	(X-X0)*(YN-1-Y0)	(XN-1-X0)*(Y-Y0)
X0·Y0	- 150800.000	- 39000.000		
44-3	- 150839.090	- 39045.989		
44-9	- 150837.059	- 39045.994	+ 1704.306351	+ 1797.905460
44-10	- 150839.254	- 39047.989	+ 1805.448476	+ 1778.424351
44-3	- 150839.090	- 39045.989	+ 1875.890010	+ 1805.252206
			+ 5385.644837	+ 5381.582017
		倍面積	= 4.062820	
		面積	= 2.031410	

4 スミリ

点 名	X	Y	(X-X0)*(YN-1-Y0)	(XN-1-X0)*(Y-Y0)
X0·Y0	- 150800.000	- 39000.000		
44-4	- 150842.499	- 39087.530		
44-11	- 150842.326	- 39085.425	+ 3704.794780	+ 3630.477075
44-12	- 150840.382	- 39087.644	+ 3449.632350	+ 3709.619944
44-4	- 150842.499	- 39087.530	+ 3724.782356	+ 3534.636460
			+ 10879.209486	+ 10874.733479
		倍面積	= 4.476007	
		面積	= 2.238003	