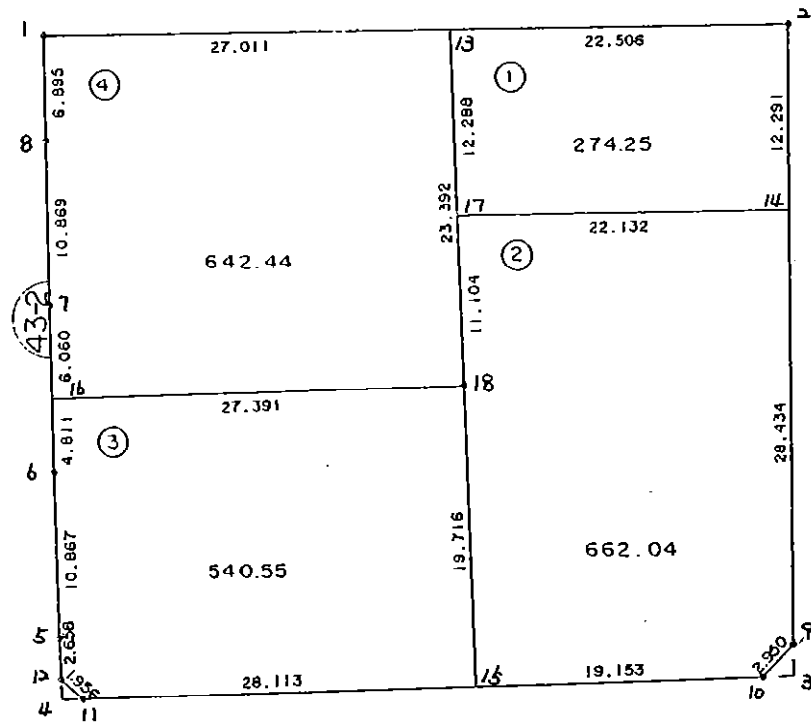


4 3 - 2 B L O C K

I



* * * 各筆面積 集計表 * * *

街区名・筆名	各筆面積	隅切面積
43-2 BLOCK	2119.30	
1 LOT	274.25	
2 LOT	662.04	
3 LOT	540.55	
4 LOT	642.44	
3 入三ヶり		2.11
4 入三ヶり		0.95
合計 =	2119.28	3.06

* * * * * 各 筆 面 積 計 算 書 * * * * *

43-2 BLOCK

点 名	X	Y	(X-X0)*(Y1-Y)	(X1-X)*(Y-Y0)
X0·Y0	- 150600.000	- 39100.000		
43-2-1	- 150678.708	- 39221.506		
43-2-2	- 150676.317	- 39172.047	+ 9272.973402	+ 5670.675276
43-2-9	- 150717.018	- 39170.649	+ 8430.795846	+ 5391.719733
43-2-10	- 150719.207	- 39172.627	+ 8421.855343	+ 8498.666286
43-2-11	- 150722.079	- 39217.802	+ 8866.231533	+ 14042.823014
43-2-12	- 150720.809	- 39219.289	+ 14231.541818	+ 14562.681831
43-2-5	- 150718.157	- 39219.466	+ 14094.830373	+ 14432.567994
43-2-6	- 150707.309	- 39220.101	+ 12819.776994	+ 14190.773857
43-2-7	- 150696.452	- 39220.656	+ 11583.981652	+ 12947.474704
43-2-8	- 150685.596	- 39221.193	+ 10327.670976	+ 11689.307236
43-2-1	- 150678.708	- 39221.506	+ 9538.858644	+ 10400.427576
			+107588.516581	+111827.117507
			倍面積 = 4238.600926	
			面積 = 2119.300463	

1 LOT

点 名	X	Y	(X-X0)*(Y1-Y)	(X1-X)*(Y-Y0)
X0·Y0	- 150600.000	- 39100.000		
43-2-13	- 150677.404	- 39194.527		
43-2-2	- 150676.317	- 39172.047	+ 7214.017059	+ 5576.725988
43-2-14	- 150688.601	- 39171.625	+ 6383.436247	+ 5466.205125
43-2-17	- 150689.666	- 39193.731	+ 6422.327250	+ 8304.660331
43-2-13	- 150677.404	- 39194.527	+ 7255.154324	+ 8475.857982
			+ 27274.934880	+ 27823.449426
			倍面積 = 548.514546	
			面積 = 274.257273	

2 LOT

点 名	X	Y	(X-X0)*(Y1-Y)	(X1-X)*(Y-Y0)
X0·Y0	- 150600.000	- 39100.000		
43-2-14	- 150688.601	- 39171.625		
43-2-9	- 150717.018	- 39170.649	+ 8381.414250	+ 6259.572049
43-2-10	- 150719.207	- 39172.627	+ 8421.855343	+ 8498.666286
43-2-15	- 150720.422	- 39191.741	+ 8745.888594	+ 10936.169387
43-2-18	- 150700.747	- 39193.012	+ 9242.630527	+ 11200.691064
43-2-17	- 150689.666	- 39193.731	+ 8340.013992	+ 9443.117057
43-2-14	- 150688.601	- 39171.625	+ 8304.660331	+ 6422.327250
			+ 51436.463037	+ 52760.543093
			倍面積 = 1324.080056	
			面積 = 662.040028	

* * * * * 各 筆 面 積 計 算 書 * * * * *

3 LOT

点 名	X	Y	(X-X0)*(YN-1-Y0)	(XN-1-X0)*(Y-Y0)
X0・Y0	- 150700.000	- 39100.000		
43-2-15	- 150720.422	- 39191.741		
43-2-11	- 150722.079	- 39217.802	+ 2025.549539	+ 2405.752444
43-2-12	- 150720.809	- 39219.289	+ 2451.341818	+ 2633.781831
43-2-5	- 150718.157	- 39219.466	+ 2165.930373	+ 2485.967994
43-2-6	- 150707.309	- 39220.101	+ 873.176994	+ 2180.673857
43-2-16	- 150702.504	- 39220.347	+ 300.732904	+ 879.616223
43-2-18	- 150700.747	- 39193.012	+ 89.899209	+ 232.902048
43-2-15	- 150720.422	- 39191.741	+ 1899.491064	+ 68.530527
			+ 9806.121901	+ 10887.224924
		倍面積	= 1081.103023	
		面積	= 540.551511	

4 LOT

点 名	X	Y	(X-X0)*(YN-1-Y0)	(XN-1-X0)*(Y-Y0)
X0・Y0	- 150600.000	- 39100.000		
43-2-16	- 150702.504	- 39220.347		
43-2-7	- 150696.452	- 39220.656	+ 11607.708844	+ 12367.722624
43-2-8	- 150685.596	- 39221.193	+ 10327.670976	+ 11689.307236
43-2-1	- 150678.708	- 39221.506	+ 9538.858644	+ 10400.427576
43-2-13	- 150677.404	- 39194.527	+ 9405.050424	+ 7440.031116
43-2-18	- 150700.747	- 39193.012	+ 9523.311669	+ 7199.500848
43-2-16	- 150702.504	- 39220.347	+ 9534.102048	+ 12124.599209
			+ 59936.702605	+ 61221.588609
		倍面積	= 1284.886004	
		面積	= 642.443002	

3 スキリ

点 名	X	Y	(X-X0)*(YN-1-Y0)	(XN-1-X0)*(Y-Y0)
X0・Y0	- 150700.000	- 39100.000		
43-2-3	- 150719.077	- 39170.578		
43-2-9	- 150717.018	- 39170.649	+ 1201.096404	+ 1347.770973
43-2-10	- 150719.207	- 39172.627	+ 1356.955343	+ 1235.966286
43-2-3	- 150719.077	- 39170.578	+ 1385.505279	+ 1355.591646
			+ 3943.557026	+ 3939.328905
		倍面積	= 4.228121	
		面積	= 2.114060	

4 スキリ

点 名	X	Y	(X-X0)*(YN-1-Y0)	(XN-1-X0)*(Y-Y0)
X0・Y0	- 150700.000	- 39200.000		
43-2-4	- 150722.168	- 39219.199		
43-2-11	- 150722.079	- 39217.802	+ 423.894721	+ 394.634736

* * * * * 各 筆 面 積 計 算 書 * * * * *

点 名	X	Y	(X-X0)*(YN-1-Y0)	(XN-1-X0)*(Y-Y0)
43-2-12	- 150720.809	- 39219.289	+ 370.441818	+ 425.881831
43-2-4	- 150722.168	- 39219.199	+ 427.598552	+ 399.511991
			+ 1221.935091	+ 1220.028558
		倍面積 =	1.906533	
		面積 =	0.953266	