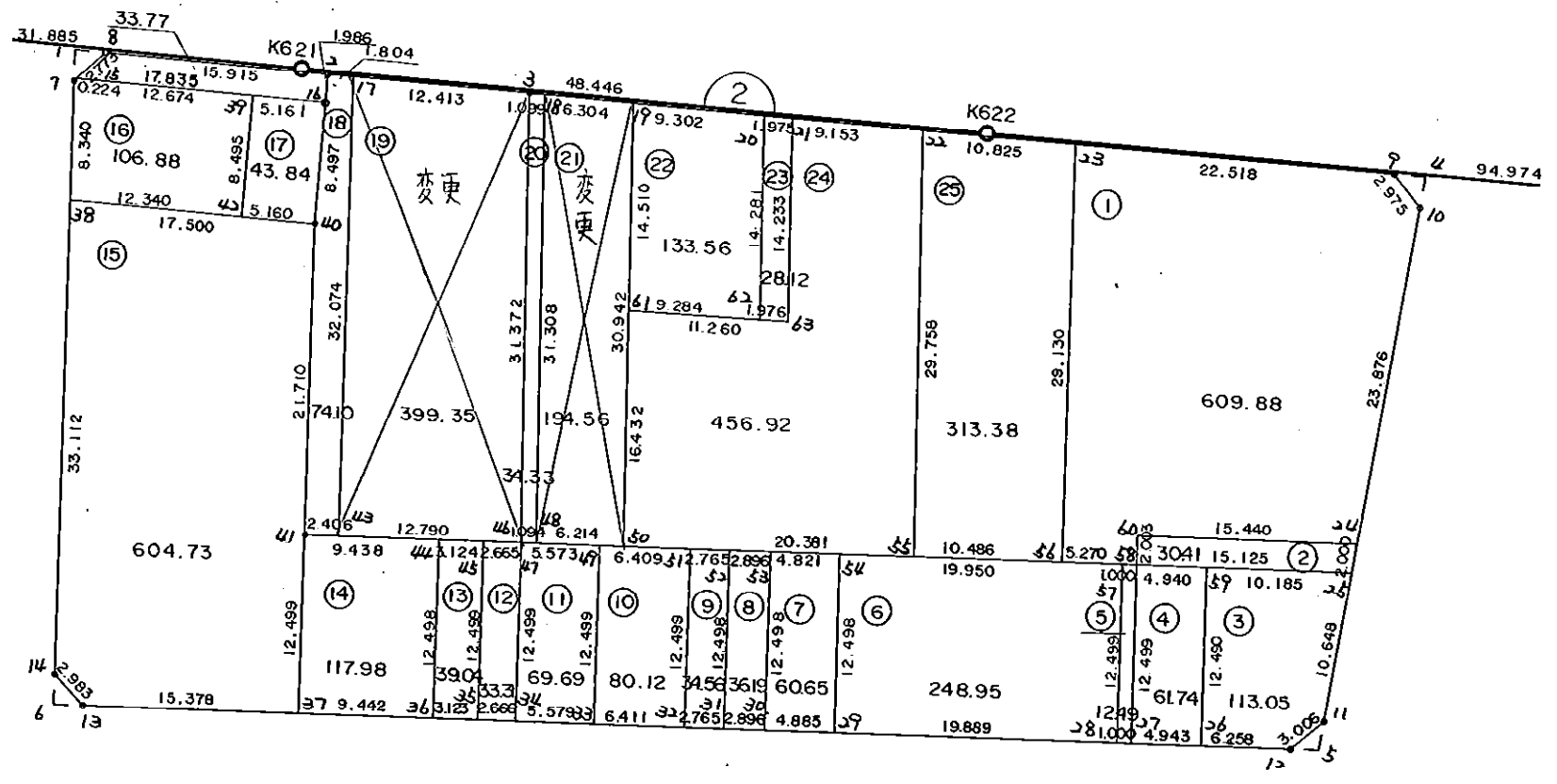


2
B
C
O
O
K

2 B L O C K



* * * 各筆面積 集計表 * * *

街区名・筆名	各筆面積	隅切面積
2 BLOCK	3971.70	
1 LOT	609.88	
2 LOT	30.41	
3 LOT	113.05	
4 LOT	61.74	
5 LOT	12.49	
6 LOT	248.95	
7 LOT	60.65	
8 LOT	36.19	
9 LOT	34.56	
10 LOT	80.12	
11 LOT	69.69	
12 LOT	33.31	
13 LOT	39.04	
14 LOT	117.98	
15 LOT	604.73	
16 LOT	106.88	
17 LOT	43.84	
18 LOT	74.10	{19-1LOT 31.87 ^m ² {19-2LOT 367.48 ^m ² {21-1LOT 6.60 ^m ² {21-2LOT 187.96 ^m ²
19 LOT	399.35	
20 LOT	34.33	
21 LOT	194.56	
22 LOT	133.56	
23 LOT	28.12	
24 LOT	456.92	
25 LOT	313.38	
アロ	33.77	
1 アミキリ		2.38
4 アミキリ		2.43
5 アミキリ		1.93
6 アミキリ		2.22
合計 =	3971.60	8.96

* * * * * 各 筆 面 積 計 算 書 * * * * *

2 BLOCK

点 名	X	Y	(X-X0)*(Yn-1-Y0)	(Xn-1-X0)*(Y-Y0)
X0·Y0	- 150500.000	- 38500.000		
2-7	- 150511.835	- 38652.110		
2-8	- 150509.526	- 38650.200	+ 1448.999860	+ 1777.617000
2-2	- 150508.502	- 38634.318	+ 1277.000400	+ 1279.513268
2-3	- 150507.542	- 38620.133	+ 1013.026356	+ 1021.370766
2-9	- 150503.483	- 38559.092	+ 418.423239	+ 445.671864
2-10	- 150505.516	- 38556.920	+ 325.951472	+ 198.252360
2-11	- 150542.023	- 38558.039	+ 2391.949160	+ 320.143124
2-12	- 150544.243	- 38560.066	+ 2567.819477	+ 2524.153518
2-13	- 150554.815	- 38644.642	+ 3292.517790	+ 6399.396006
2-14	- 150552.969	- 38646.985	+ 7661.542098	+ 8056.982775
2-7	- 150511.835	- 38652.110	+ 1739.567475	+ 8057.114590
			+ 22136.797327	+ 30080.215271
		倍面積	= 7943.417944	
		面積	= 3971.708972	

1 LOT

点 名	X	Y	(X-X0)*(Yn-1-Y0)	(Xn-1-X0)*(Y-Y0)
X0·Y0	- 150500.000	- 38500.000		
2-23	- 150504.977	- 38581.560		
2-9	- 150503.483	- 38559.092	+ 284.073480	+ 294.100884
2-10	- 150505.516	- 38556.920	+ 325.951472	+ 198.252360
2-24	- 150529.381	- 38557.652	+ 1672.366520	+ 318.008432
2-60	- 150531.242	- 38572.979	+ 1801.163784	+ 2144.195999
2-58	- 150533.229	- 38572.725	+ 2425.019191	+ 2272.074450
2-56	- 150533.883	- 38577.954	+ 2464.141175	+ 2590.333466
2-23	- 150504.977	- 38581.560	+ 387.977058	+ 2763.497480
			+ 9360.692680	+ 10580.463071
		倍面積	= 1219.770391	
		面積	= 609.885195	

2 LOT

点 名	X	Y	(X-X0)*(Yn-1-Y0)	(Xn-1-X0)*(Y-Y0)
X0·Y0	- 150500.000	- 38500.000		
2-24	- 150529.381	- 38557.652		
2-25	- 150531.380	- 38557.713	+ 1809.119760	+ 1695.665653
2-58	- 150533.229	- 38572.725	+ 1917.745277	+ 2282.110500
2-60	- 150531.242	- 38572.979	+ 2272.074450	+ 2425.019191
2-24	- 150529.381	- 38557.652	+ 2144.195999	+ 1801.163784
			+ 8143.135486	+ 8203.959128
		倍面積	= 60.823642	
		面積	= 30.411821	

* * * * * 各 筆 面 積 計 算 書 * * * * *

3 LOT

点 名	X	Y	(X-X0)*(YN-1-Y0)	(XN-1-X0)*(Y-Y0)
X0·Y0	- 150500.000	- 38500.000		
2-25	- 150531.380	- 38557.713		
2-11	- 150542.023	- 38558.039	+ 2425.273399	+ 1821.263820
2-12	- 150544.243	- 38560.066	+ 2567.819477	+ 2524.153518
2-26	- 150545.019	- 38566.276	+ 2704.111254	+ 2932.249068
2-59	- 150532.625	- 38567.822	+ 2162.254500	+ 3053.278618
2-25	- 150531.380	- 38557.713	+ 2128.254360	+ 1882.886625
			+ 11987.712990	+ 12213.831649
		倍面積	= 226.118659	
		面積	= 113.059329	

4 LOT

点 名	X	Y	(X-X0)*(YN-1-Y0)	(XN-1-X0)*(Y-Y0)
X0·Y0	- 150500.000	- 38500.000		
2-26	- 150545.019	- 38566.276		
2-27	- 150545.632	- 38571.181	+ 3024.306432	+ 3204.497439
2-58	- 150533.229	- 38572.725	+ 2365.273449	+ 3318.587200
2-59	- 150532.625	- 38567.822	+ 2372.653125	+ 2253.657238
2-26	- 150545.019	- 38566.276	+ 3053.278618	+ 2162.254500
			+ 10815.511624	+ 10938.996377
		倍面積	= 123.484753	
		面積	= 61.742376	

5 LOT

点 名	X	Y	(X-X0)*(YN-1-Y0)	(XN-1-X0)*(Y-Y0)
X0·Y0	- 150500.000	- 38500.000		
2-27	- 150545.632	- 38571.181		
2-28	- 150545.756	- 38572.173	+ 3256.957836	+ 3293.398336
2-57	- 150533.353	- 38573.717	+ 2407.186069	+ 3372.995052
2-58	- 150533.229	- 38572.725	+ 2449.542193	+ 2425.596925
2-27	- 150545.632	- 38571.181	+ 3318.587200	+ 2365.273449
			+ 11432.273298	+ 11457.263762
		倍面積	= 24.990464	
		面積	= 12.495232	

6 LOT

点 名	X	Y	(X-X0)*(YN-1-Y0)	(XN-1-X0)*(Y-Y0)
X0·Y0	- 150500.000	- 38500.000		
2-28	- 150545.756	- 38572.173		
2-29	- 150548.223	- 38591.908	+ 3480.398579	+ 4205.342448

* * * * * 各 筆 面 積 計 算 書 * * * * *

点 名	X	Y	(X-X0)*(YN-1-Y0)	(XN-1-X0)*(Y-Y0)
2-54	- 150535.828	- 38593.512	+ 3292.879824	+ 4509.429176
2-57	- 150533.353	- 38573.717	+ 3118.905736	+ 2641.132676
2-28	- 150545.756	- 38572.173	+ 3372.995052	+ 2407.186069
			+ 13265.179191	+ 13763.090369
		倍面積	= 497.911178	
		面積	= 248.955589	

7 LOT

点 名	X	Y	(X-X0)*(YN-1-Y0)	(XN-1-X0)*(Y-Y0)
X0·Y0	- 150500.000	- 38500.000		
2-29	- 150548.223	- 38591.908		
2-30	- 150548.829	- 38596.755	+ 4487.775732	+ 4665.816365
2-53	- 150536.426	- 38598.296	+ 3524.397630	+ 4799.695384
2-54	- 150535.828	- 38593.512	+ 3521.749088	+ 3406.268112
2-29	- 150548.223	- 38591.908	+ 4509.429176	+ 3292.879824
			+ 16043.351626	+ 16164.659685
		倍面積	= 121.308059	
		面積	= 60.654029	

8 LOT

点 名	X	Y	(X-X0)*(YN-1-Y0)	(XN-1-X0)*(Y-Y0)
X0·Y0	- 150500.000	- 38500.000		
2-30	- 150548.829	- 38596.755		
2-31	- 150549.188	- 38599.629	+ 4759.184940	+ 4864.784441
2-52	- 150536.785	- 38601.170	+ 3664.852765	+ 4976.349960
2-53	- 150536.426	- 38598.296	+ 3685.218420	+ 3615.818360
2-30	- 150548.829	- 38596.755	+ 4799.695384	+ 3524.397630
			+ 16908.951509	+ 16981.350391
		倍面積	= 72.398882	
		面積	= 36.199441	

9 LOT

点 名	X	Y	(X-X0)*(YN-1-Y0)	(XN-1-X0)*(Y-Y0)
X0·Y0	- 150500.000	- 38500.000		
2-31	- 150549.188	- 38599.629		
2-32	- 150549.532	- 38602.373	+ 4934.823628	+ 5035.523124
2-51	- 150537.128	- 38603.914	+ 3800.904744	+ 5147.068248
2-52	- 150536.785	- 38601.170	+ 3822.476490	+ 3756.239760
2-31	- 150549.188	- 38599.629	+ 4976.349960	+ 3664.852765
			+ 17534.554822	+ 17603.683897
		倍面積	= 69.129075	
		面積	= 34.564537	

* * * * * 各 筆 面 積 計 算 書 * * * * *

10 LOT

点 名	X	Y	(X-X0)*(YN-1-Y0)	(XN-1-X0)*(Y-Y0)
X0·Y0	- 150500.000	- 38600.000		
2-32	- 150549.532	- 38602.373		
2-33	- 150550.327	- 38608.734	+ 119.425971	+ 432.612488
2-49	- 150537.923	- 38610.274	+ 331.219482	+ 517.059598
2-51	- 150537.128	- 38603.914	+ 381.453072	+ 148.430622
2-32	- 150549.532	- 38602.373	+ 193.868248	+ 88.104744
			+ 1025.966773	+ 1186.207452
		倍面積	= 160.240679	
		面積	= 80.120339	

11 LOT

点 名	X	Y	(X-X0)*(YN-1-Y0)	(XN-1-X0)*(Y-Y0)
X0·Y0	- 150500.000	- 38600.000		
2-33	- 150550.327	- 38608.734		
2-34	- 150551.019	- 38614.270	+ 445.599946	+ 718.166290
2-47	- 150538.614	- 38615.804	+ 551.021780	+ 806.304276
2-49	- 150537.923	- 38610.274	+ 599.335092	+ 396.720236
2-33	- 150550.327	- 38608.734	+ 517.059598	+ 331.219482
			+ 2113.016416	+ 2252.410284
		倍面積	= 139.393868	
		面積	= 69.696934	

12 LOT

点 名	X	Y	(X-X0)*(YN-1-Y0)	(XN-1-X0)*(Y-Y0)
X0·Y0	- 150500.000	- 38600.000		
2-34	- 150551.019	- 38614.270		
2-35	- 150551.350	- 38616.915	+ 732.764500	+ 862.986385
2-45	- 150538.945	- 38618.448	+ 658.754675	+ 947.304800
2-47	- 150538.614	- 38615.804	+ 712.351072	+ 615.486780
2-34	- 150551.019	- 38614.270	+ 806.304276	+ 551.021780
			+ 2910.174523	+ 2976.799745
		倍面積	= 66.625222	
		面積	= 33.312611	

13 LOT

点 名	X	Y	(X-X0)*(YN-1-Y0)	(XN-1-X0)*(Y-Y0)
X0·Y0	- 150500.000	- 38600.000		
2-35	- 150551.350	- 38616.915		
2-36	- 150551.737	- 38620.014	+ 875.131355	+ 1027.718900
2-44	- 150539.333	- 38621.548	+ 787.210662	+ 1114.828876

* * * * * 各 筆 面 積 計 算 書 * * * * *

点 名	X	Y	(X-X0)*(YN-1-Y0)	(XN-1-X0)*(Y-Y0)
2-45	- 150538.945	- 38618.448	+ 839.186860	+ 725.615184
2-35	- 150551.350	- 38616.915	+ 947.304800	+ 658.754675
			+ 3448.833677	+ 3526.917635
		倍面積	= 78.083958	
		面積	= 39.041979	

14 LOT

点 名	X	Y	(X-X0)*(YN-1-Y0)	(XN-1-X0)*(Y-Y0)
X0·Y0	- 150500.000	- 38600.000		
2-36	- 150551.737	- 38620.014		
2-37	- 150552.908	- 38629.383	+ 1058.900712	+ 1520.188271
2-41	- 150540.503	- 38630.913	+ 1190.099649	+ 1635.545004
2-44	- 150539.333	- 38621.548	+ 1215.901029	+ 872.758644
2-36	- 150551.737	- 38620.014	+ 1114.828876	+ 787.210662
			+ 4579.730266	+ 4815.702581
		倍面積	= 235.972315	
		面積	= 117.986157	

15 LOT

点 名	X	Y	(X-X0)*(YN-1-Y0)	(XN-1-X0)*(Y-Y0)
X0·Y0	- 150500.000	- 38600.000		
2-37	- 150552.908	- 38629.383		
2-13	- 150554.815	- 38644.642	+ 1610.629145	+ 2361.918936
2-14	- 150552.969	- 38646.985	+ 2364.642098	+ 2575.482775
2-38	- 150520.111	- 38651.079	+ 944.915335	+ 2705.603551
2-40	- 150518.962	- 38633.617	+ 968.559998	+ 676.071487
2-41	- 150540.503	- 38630.913	+ 1361.589351	+ 586.172306
2-37	- 150552.908	- 38629.383	+ 1635.545004	+ 1190.099649
			+ 8885.880931	+ 10095.348704
		倍面積	= 1209.467773	
		面積	= 604.733886	

16 LOT

点 名	X	Y	(X-X0)*(YN-1-Y0)	(XN-1-X0)*(Y-Y0)
X0·Y0	- 150500.000	- 38600.000		
2-38	- 150520.111	- 38651.079		
2-7	- 150511.835	- 38652.110	+ 604.519965	+ 1047.984210
2-15	- 150511.662	- 38651.967	+ 607.706820	+ 615.029445
2-39	- 150510.824	- 38639.321	+ 562.490808	+ 458.561502
2-42	- 150519.301	- 38638.766	+ 758.934621	+ 419.603184
2-38	- 150520.111	- 38651.079	+ 779.623026	+ 985.875779
			+ 3313.275240	+ 3527.054120
		倍面積	= 213.778880	
		面積	= 106.889440	

* * * * * 各 筆 面 積 計 算 書 * * * * *

17 LOT

点 名	X	Y	(X-X0)*(YN-1-Y0)	(XN-1-X0)*(Y-Y0)
X0·Y0	- 150500.000	- 38600.000		
2-39	- 150510.824	- 38639.321		
2-16	- 150510.483	- 38634.171	+ 412.202043	+ 369.866904
2-40	- 150518.962	- 38633.617	+ 647.950502	+ 352.407011
2-42	- 150519.301	- 38638.766	+ 648.841717	+ 735.080892
2-39	- 150510.824	- 38639.321	+ 419.603184	+ 758.934621
			+ 2128.597446	+ 2216.289428
		倍面積	= 87.691982	
		面積	= 43.845991	

18 LOT

点 名	X	Y	(X-X0)*(YN-1-Y0)	(XN-1-X0)*(Y-Y0)
X0·Y0	- 150500.000	- 38600.000		
2-2	- 150508.502	- 38634.318		
2-17	- 150508.380	- 38632.518	+ 287.584840	+ 276.468036
2-43	- 150540.205	- 38628.526	+ 1307.386190	+ 239.047880
2-41	- 150540.503	- 38630.913	+ 1155.388578	+ 1242.857165
2-40	- 150518.962	- 38633.617	+ 586.172306	+ 1361.589351
2-16	- 150510.483	- 38634.171	+ 352.407011	+ 647.950502
2-2	- 150508.502	- 38634.318	+ 290.521842	+ 359.755594
			+ 3979.460767	+ 4127.668528
		倍面積	= 148.207761	
		面積	= 74.103880	

19 LOT

点 名	X	Y	(X-X0)*(YN-1-Y0)	(XN-1-X0)*(Y-Y0)
X0·Y0	- 150500.000	- 38600.000		
2-17	- 150508.380	- 38632.518		
2-3	- 150507.542	- 38620.133	+ 245.250756	+ 168.714540
2-46	- 150538.618	- 38615.835	+ 777.496194	+ 119.427570
2-43	- 150540.205	- 38628.526	+ 636.646175	+ 1101.617068
2-17	- 150508.380	- 38632.518	+ 239.047880	+ 1307.386190
			+ 1898.441005	+ 2697.145368
		倍面積	= 798.704363	
		面積	= 399.352181	

20 LOT

点 名	X	Y	(X-X0)*(YN-1-Y0)	(XN-1-X0)*(Y-Y0)
X0·Y0	- 150500.000	- 38600.000		
2-3	- 150507.542	- 38620.133		
2-18	- 150507.469	- 38619.036	+ 150.373377	+ 143.569512

* * * * * 各 筆 面 積 計 算 書 * * * * *

点 名	X	Y	(X-X0)*(YN-1-Y0)	(XN-1-X0)*(Y-Y0)
2-48	- 150538.482	- 38614.749	+ 732.543352	+ 110.160281
2-46	- 150538.618	- 38615.835	+ 569.576882	+ 609.362470
2-3	- 150507.542	- 38620.133	+ 119.427570	+ 777.496194
			+ 1571.921181	+ 1640.588457
		倍面積	= 68.667276	
		面積	= 34.333638	

21 LOT

点 名	X	Y	(X-X0)*(YN-1-Y0)	(XN-1-X0)*(Y-Y0)
X0·Y0	- 150500.000	- 38600.000		
2-18	- 150507.469	- 38619.036		
2-19	- 150507.051	- 38612.746	+ 134.222836	+ 95.199874
2-50	- 150537.712	- 38608.583	+ 480.677152	+ 60.518733
2-48	- 150538.482	- 38614.749	+ 330.291006	+ 556.214288
2-18	- 150507.469	- 38619.036	+ 110.160281	+ 732.543352
			+ 1055.351275	+ 1444.476247
		倍面積	= 389.124972	
		面積	= 194.562486	

22 LOT

点 名	X	Y	(X-X0)*(YN-1-Y0)	(XN-1-X0)*(Y-Y0)
X0·Y0	- 150500.000	- 38600.000		
2-19	- 150507.051	- 38612.746		
2-20	- 150506.434	- 38603.464	+ 82.007764	+ 24.424664
2-62	- 150520.586	- 38601.548	+ 71.309904	+ 9.959832
2-61	- 150521.429	- 38610.794	+ 33.172092	+ 222.205284
2-19	- 150507.051	- 38612.746	+ 76.108494	+ 273.134034
			+ 262.598254	+ 529.723814
		倍面積	= 267.125560	
		面積	= 133.562780	

23 LOT

点 名	X	Y	(X-X0)*(YN-1-Y0)	(XN-1-X0)*(Y-Y0)
X0·Y0	- 150500.000	- 38500.000		
2-20	- 150506.434	- 38603.464		
2-21	- 150506.303	- 38601.493	+ 652.133592	+ 653.005962
2-63	- 150520.407	- 38599.580	+ 2071.167651	+ 627.652740
2-62	- 150520.586	- 38601.548	+ 2049.953880	+ 2072.290036
2-20	- 150506.434	- 38603.464	+ 653.359832	+ 2129.909904
			+ 5426.614955	+ 5482.858642
		倍面積	= 56.243687	
		面積	= 28.121843	

* * * * * 各 筆 面 積 計 算 書 * * * * *

24 LOT

点 名	X	Y	(X-X0)*(YN-1-Y0)	(XN-1-X0)*(Y-Y0)
X0·Y0	- 150500.000	- 38500.000		
2-21	- 150506.303	- 38601.493		
2-22	- 150505.696	- 38592.360	+ 578.104128	+ 582.145080
2-55	- 150535.184	- 38588.358	+ 3249.594240	+ 503.287168
2-50	- 150537.712	- 38608.583	+ 3332.156896	+ 3820.384272
2-61	- 150521.429	- 38610.794	+ 2326.825107	+ 4178.263328
2-63	- 150520.407	- 38599.580	+ 2260.973158	+ 2133.899820
2-21	- 150506.303	- 38601.493	+ 627.652740	+ 2071.167651
			+ 12375.306269	+ 13289.147319
		倍面積	= 913.841050	
		面積	= 456.920525	

25 LOT

点 名	X	Y	(X-X0)*(YN-1-Y0)	(XN-1-X0)*(Y-Y0)
X0·Y0	- 150500.000	- 38500.000		
2-22	- 150505.696	- 38592.360		
2-23	- 150504.977	- 38581.560	+ 459.675720	+ 464.565760
2-56	- 150533.883	- 38577.954	+ 2763.497480	+ 387.977058
2-55	- 150535.184	- 38588.358	+ 2742.733536	+ 2993.834114
2-22	- 150505.696	- 38592.360	+ 503.287168	+ 3249.594240
			+ 6469.193904	+ 7095.971172
		倍面積	= 626.777268	
		面積	= 313.388634	

210

点 名	X	Y	(X-X0)*(YN-1-Y0)	(XN-1-X0)*(Y-Y0)
X0·Y0	- 150500.000	- 38600.000		
2-15	- 150511.662	- 38651.967		
2-8	- 150509.526	- 38650.200	+ 495.037642	+ 585.432400
2-2	- 150508.502	- 38634.318	+ 426.800400	+ 326.913268
2-16	- 150510.483	- 38634.171	+ 359.755594	+ 290.521842
2-15	- 150511.662	- 38651.967	+ 398.502202	+ 544.770061
			+ 1680.095838	+ 1747.637571
		倍面積	= 67.541733	
		面積	= 33.770866	

1 2337

点 名	X	Y	(X-X0)*(YN-1-Y0)	(XN-1-X0)*(Y-Y0)
X0·Y0	- 150500.000	- 38600.000		
2-1	- 150509.667	- 38652.380		
2-7	- 150511.835	- 38652.110	+ 619.917300	+ 503.747370

* * * * * 各 筆 面 積 計 算 書 * * * * *

点 名	X	Y	(X-X0)*(YN-1-Y0)	(XN-1-X0)*(Y-Y0)
2-8	- 150509.526	- 38650.200	+ 496.399860	+ 594.117000
2-1	- 150509.667	- 38652.380	+ 485.283400	+ 498.971880
			+ 1601.600560	+ 1596.836250
		倍面積	= 4.764310	
		面積	= 2.382155	

4 区切り

点 名	X	Y	(X-X0)*(YN-1-Y0)	(XN-1-X0)*(Y-Y0)
X0-Y0	- 150500.000	- 38500.000		
2-4	- 150503.334	- 38556.853		
2-9	- 150503.483	- 38559.092	+ 198.018999	+ 197.012728
2-10	- 150505.516	- 38556.920	+ 325.951472	+ 198.252360
2-4	- 150503.334	- 38556.853	+ 189.771280	+ 313.601148
			+ 713.741751	+ 708.866236
		倍面積	= 4.875515	
		面積	= 2.437757	

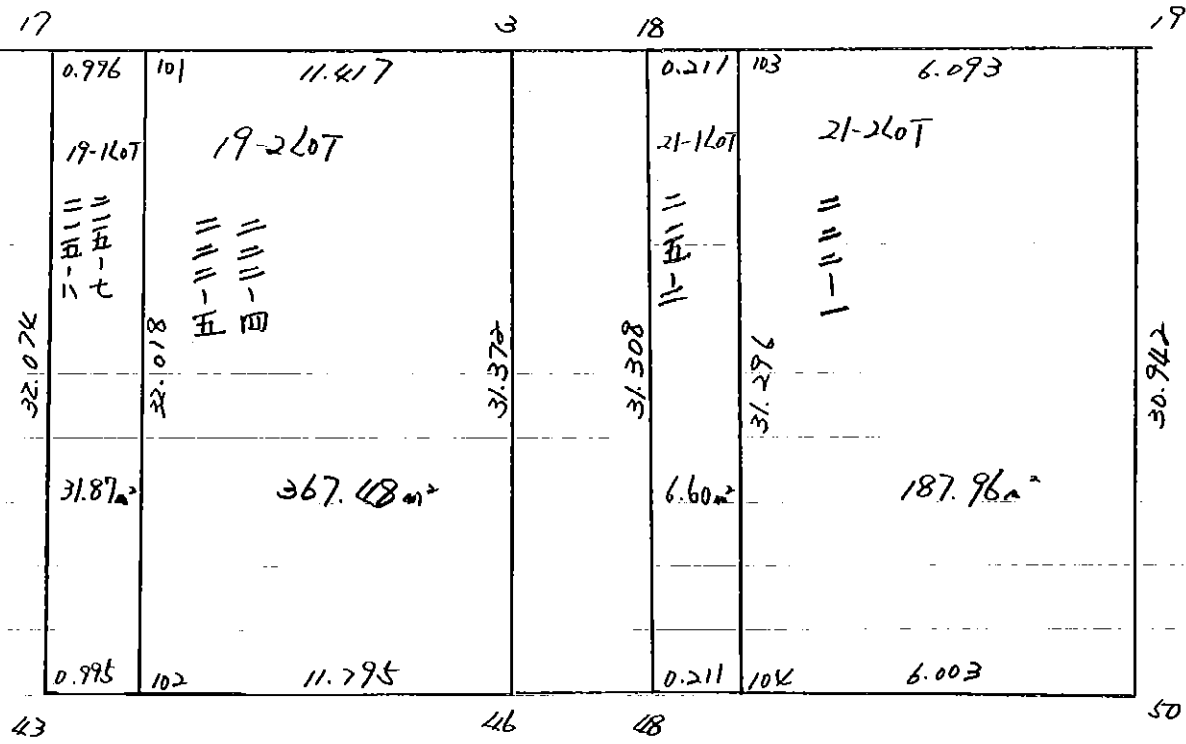
5 区切り

点 名	X	Y	(X-X0)*(YN-1-Y0)	(XN-1-X0)*(Y-Y0)
X0-Y0	- 150500.000	- 38500.000		
2-5	- 150543.997	- 38558.099		
2-11	- 150542.023	- 38558.039	+ 2441.494277	+ 2553.541883
2-12	- 150544.243	- 38560.066	+ 2567.819477	+ 2524.153518
2-5	- 150543.997	- 38558.099	+ 2642.723802	+ 2570.474057
			+ 7652.037556	+ 7648.169458
		倍面積	= 3.868098	
		面積	= 1.934049	

6 区切り

点 名	X	Y	(X-X0)*(YN-1-Y0)	(XN-1-X0)*(Y-Y0)
X0-Y0	- 150500.000	- 38600.000		
2-6	- 150555.075	- 38646.723		
2-13	- 150554.815	- 38644.642	+ 2561.121245	+ 2458.658150
2-14	- 150552.969	- 38646.985	+ 2364.642098	+ 2575.482775
2-6	- 150555.075	- 38646.723	+ 2587.698875	+ 2474.870587
			+ 7513.462218	+ 7509.011512
		倍面積	= 4.450706	
		面積	= 2.225353	

2 Block



* * * * 19-1 LOT

面積計算書 * * * * NO 1

点名	X	DX	DMD.1	Y	DY	DMD.2	DX * DMD.2	DY * DMD.1
2-17	- 150508.380			- 38632.518				
2-101	- 150508.313	- 0.067	- 0.067	- 38631.524	- 0.994	- 0.994	+ 0.066598	+ 0.066598
2-102	- 150540.082	+ 31.769	+ 31.635	- 38627.539	- 3.985	- 5.973	- 189.756237	- 126.065475
2-43	- 150540.205	+ 0.123	+ 63.527	- 38628.526	+ 0.987	- 8.971	+ 1.103433	+ 62.701149
2-17	- 150508.380	- 31.825	+ 31.825	- 38632.518	+ 3.992	- 3.992	+ 127.045400	+ 127.045400
		+ 31.892			+ 4.979		+ 127.111998	+ 189.813147
		- 31.892			- 4.979		- 190.859670	- 126.065475
							- 63.747672	+ 63.747672
						面積 =	31.873836	

* * * * 19-2 LOT

面積計算書

* * * * NO 1

点名	X	DX	DMD.1	Y	DY	DMD.2	DX * DMD.2	DY * DMD.1
2-101	- 150508.313			- 38631.524				
2-3	- 150507.542	- 0.771	- 0.771	- 38620.133	- 11.391	- 11.391	+ 8.782461	+ 8.782461
2-46	- 150538.618	+ 31.076	+ 29.534	- 38615.835	- 4.298	- 27.080	- 841.538080	- 126.937132
2-102	- 150540.082	+ 1.464	+ 62.074	- 38627.539	+ 11.704	- 19.674	+ 28.802736	+ 726.514096
2-101	- 150508.313	- 31.769	+ 31.769	- 38631.524	+ 3.985	- 3.985	+ 126.599465	+ 126.599465
		+ 32.540			+ 15.689		+ 135.381926	+ 861.896022
		- 32.540			- 15.689		- 870.340816	- 126.937132
							- 734.958890	+ 734.958890

面積 = ~~367.479445~~

367.48

確定後にき端数調整

* * * * 21-1 LOT

面積計算書

* * * * NO 1

点名	X	DX	DMD.1	Y	DY	DMD.2	DX * DMD.2	DY * DMD.1
2-18	- 150507.469			- 38619.036				
2-103	- 150507.455	- 0.014	- 0.014	- 38618.825	- 0.211	- 0.211	+ 0.002954	+ 0.002954
2-104	- 150538.456	+ 31.001	+ 30.973	- 38614.540	- 4.285	- 4.707	- 145.921707	- 132.719305
2-48	- 150538.482	+ 0.026	+ 62.000	- 38614.749	+ 0.209	- 8.783	+ 0.228358	+ 12.958000
2-18	- 150507.469	- 31.013	+ 31.013	- 38619.036	+ 4.287	- 4.287	+ 132.952731	+ 132.952731
		+ 31.027			+ 4.496		+ 132.955685	+ 145.913685
		- 31.027			- 4.496		- 146.150065	- 132.719305
							- 13.194380	+ 13.194380

面積 = ~~6.597190~~

6.60

確定後にき端数調整

