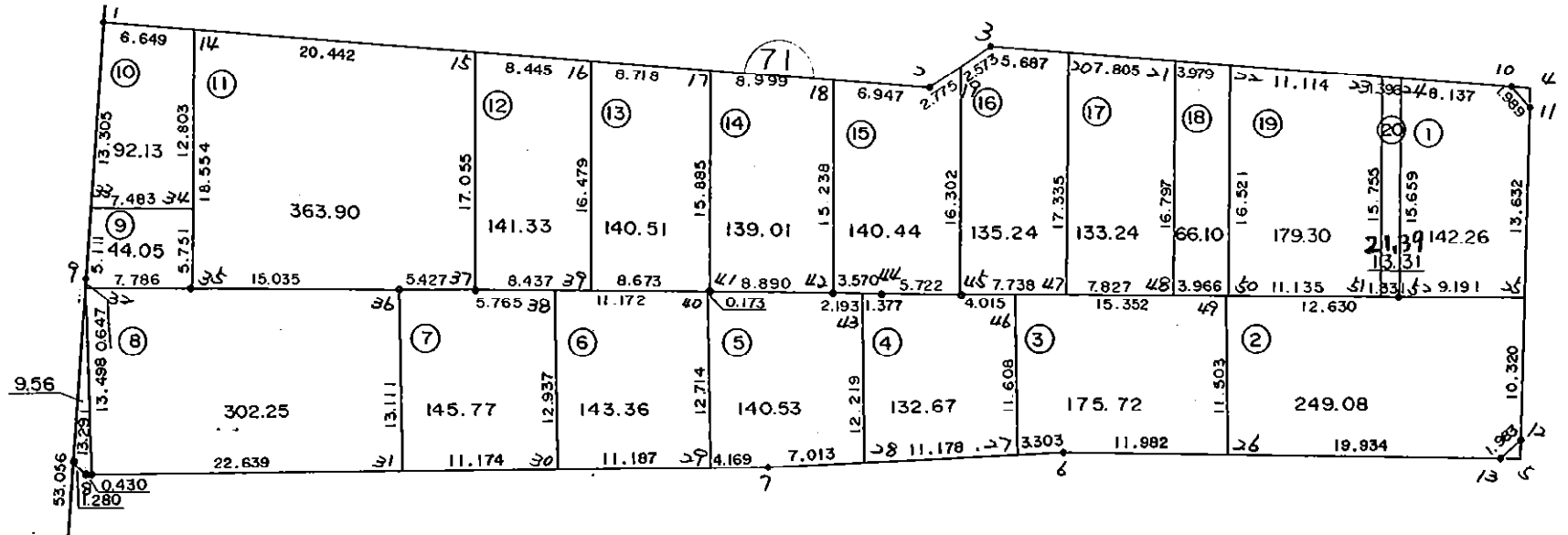


7 1 B L O C K



* * * 各筆面積 集計表 * * *

街区名・筆名	各筆面積	隅切面積
71 BLOCK	3028.40	
1 LOT	142.26	
2 LOT	249.08	
3 LOT	175.72	
4 LOT	132.67	
5 LOT	140.53	
6 LOT	143.36	
7 LOT	145.77	
8 LOT	302.25	
9 LOT	44.05	
10 LOT	92.13	
11 LOT	363.90	
12 LOT	141.33	
13 LOT	140.51	
14 LOT	139.01	
15 LOT	140.44	
16 LOT	135.24	
17 LOT	133.24	
18 LOT	66.10	
19 LOT	179.30	
20 LOT	21.39	
4 スミキリ		0.94
5 スミキリ		0.96
合計 =	3028.28	1.90

* * * * * 各 筆 面 積 計 算 書 * * * * *

71 BLOCK

点 名	X	Y	(X-X0)*(YN-1-Y0)	(XN-1-X0)*(Y-Y0)
X0·Y0	- 150800.000	- 39400.000		
71-1	- 150859.386	- 39579.788		
71-2	- 150863.739	- 39519.746	+ 11459.507332	+ 7111.235956
71-3	- 150860.784	- 39515.288	+ 7278.640864	+ 7348.341832
71-10	- 150863.471	- 39477.265	+ 7317.444648	+ 4696.475760
71-11	- 150864.957	- 39475.943	+ 5018.902605	+ 4820.178153
71-12	- 150888.901	- 39476.517	+ 6751.408643	+ 4970.314769
71-13	- 150890.204	- 39478.012	+ 6902.139468	+ 6935.344812
71-6	- 150889.940	- 39509.927	+ 7016.399280	+ 9915.855108
71-7	- 150891.114	- 39531.389	+ 10015.888678	+ 11817.126660
71-8	- 150891.898	- 39580.551	+ 12074.386322	+ 16450.723814
71-9	- 150877.761	- 39581.018	+ 14039.826311	+ 16635.192164
71-1	- 150859.386	- 39579.788	+ 10749.934948	+ 13980.494668
			+ 98624.479099	+104681.283696
		倍面積	= 6056.804597	
		面積	= 3028.402298	

1 LOT

点 名	X	Y	(X-X0)*(YN-1-Y0)	(XN-1-X0)*(Y-Y0)
X0·Y0	- 150800.000	- 39400.000		
71-24	- 150862.897	- 39485.382		
71-10	- 150863.471	- 39477.265	+ 5419.280922	+ 4859.736705
71-11	- 150864.957	- 39475.943	+ 5018.902605	+ 4820.178153
71-25	- 150878.584	- 39476.270	+ 5967.904712	+ 4954.270390
71-52	- 150878.556	- 39485.461	+ 5991.466120	+ 6715.867224
71-24	- 150862.897	- 39485.382	+ 5375.240517	+ 6707.268392
			+ 27772.794876	+ 28057.320864
		倍面積	= 284.525988	
		面積	= 142.262994	

2 LOT

点 名	X	Y	(X-X0)*(YN-1-Y0)	(XN-1-X0)*(Y-Y0)
X0·Y0	- 150800.000	- 39400.000		
71-25	- 150878.584	- 39476.270		
71-12	- 150888.901	- 39476.517	+ 6780.479270	+ 6013.011928
71-13	- 150890.204	- 39478.012	+ 6902.139468	+ 6935.344812
71-26	- 150890.039	- 39497.945	+ 7024.122468	+ 8835.030780
71-49	- 150878.537	- 39498.091	+ 7692.306465	+ 8832.015549
71-52	- 150878.556	- 39485.461	+ 7705.636596	+ 6711.850557
71-25	- 150878.584	- 39476.270	+ 6715.867224	+ 5991.466120
			+ 42820.551491	+ 43318.719746
		倍面積	= 498.168255	
		面積	= 249.084127	

* * * * * 各 筆 面 積 計 算 書 * * * * *

3 LOT

点 名	X	Y	(X-XD)*(YN-1-YD)	(XN-1-XD)*(Y-YD)
XD·YD	- 150800.000	- 39400.000		
71-26	- 150890.039	- 39497.945		
71-6	- 150889.940	- 39509.927	+ 8809.173300	+ 9897.717153
71-27	- 150890.120	- 39513.225	+ 9906.621240	+ 10183.456500
71-46	- 150878.514	- 39513.443	+ 8889.747650	+ 10223.483160
71-49	- 150878.537	- 39498.091	+ 8909.472891	+ 7701.516774
71-26	- 150890.039	- 39497.945	+ 8832.015549	+ 7692.306465
			+ 45347.030630	+ 45698.480052
		倍面積	= 351.449422	
		面積	= 175.724711	

4 LOT

点 名	X	Y	(X-XD)*(YN-1-YD)	(XN-1-XD)*(Y-YD)
XD·YD	- 150800.000	- 39500.000		
71-27	- 150890.120	- 39513.225		
71-28	- 150890.731	- 39524.386	+ 1199.917475	+ 2197.666320
71-43	- 150878.513	- 39524.557	+ 1914.618018	+ 2228.081167
71-44	- 150878.537	- 39523.180	+ 1928.633109	+ 1819.931340
71-45	- 150878.508	- 39517.458	+ 1819.815440	+ 1371.098946
71-46	- 150878.514	- 39513.443	+ 1370.697412	+ 1055.383044
71-27	- 150890.120	- 39513.225	+ 1211.483160	+ 1038.347650
			+ 9445.164614	+ 9710.508467
		倍面積	= 265.343853	
		面積	= 132.671926	

5 LOT

点 名	X	Y	(X-XD)*(YN-1-YD)	(XN-1-XD)*(Y-YD)
XD·YD	- 150800.000	- 39500.000		
71-28	- 150890.731	- 39524.386		
71-7	- 150891.114	- 39531.389	+ 2221.906004	+ 2847.955359
71-29	- 150891.181	- 39535.557	+ 2862.080409	+ 3239.740498
71-40	- 150878.470	- 39535.812	+ 2790.157790	+ 3265.373972
71-41	- 150878.471	- 39535.639	+ 2810.203452	+ 2796.592330
71-42	- 150878.475	- 39526.749	+ 2796.770525	+ 2099.020779
71-43	- 150878.513	- 39524.557	+ 2100.144237	+ 1927.110575
71-28	- 150890.731	- 39524.386	+ 2228.081167	+ 1914.618018
			+ 17809.343584	+ 18090.411531
		倍面積	= 281.067947	
		面積	= 140.533973	

* * * * * 各 筆 面 積 計 算 書 * * * * *

6 LOT

点 名	X	Y	(X-X0)*(YN-1-Y0)	(XN-1-X0)*(Y-Y0)
X0·Y0	- 150800.000	- 39500.000		
71-29	- 150891.181	- 39535.557		
71-30	- 150891.359	- 39546.743	+ 3248.451963	+ 4262.073483
71-38	- 150878.424	- 39546.984	+ 3665.773032	+ 4292.411256
71-40	- 150878.470	- 39535.812	+ 3686.834480	+ 2808.520288
71-29	- 150891.181	- 39535.557	+ 3265.373972	+ 2790.157790
			+ 13866.433447	+ 14153.162817
		倍面積	= 286.729370	
		面積	= 143.364685	

7 LOT

点 名	X	Y	(X-X0)*(YN-1-Y0)	(XN-1-X0)*(Y-Y0)
X0·Y0	- 150800.000	- 39500.000		
71-30	- 150891.359	- 39546.743		
71-31	- 150891.537	- 39557.915	+ 4278.713991	+ 5291.056485
71-36	- 150878.429	- 39558.176	+ 4542.215535	+ 5325.256512
71-37	- 150878.400	- 39552.749	+ 4560.998400	+ 4137.051321
71-38	- 150878.424	- 39546.984	+ 4136.787576	+ 3683.545600
71-30	- 150891.359	- 39546.743	+ 4292.411256	+ 3665.773032
			+ 21811.126758	+ 22102.682950
		倍面積	= 291.556192	
		面積	= 145.778096	

8 LOT

点 名	X	Y	(X-X0)*(YN-1-Y0)	(XN-1-X0)*(Y-Y0)
X0·Y0	- 150800.000	- 39500.000		
71-31	- 150891.537	- 39557.915		
71-8	- 150891.898	- 39580.551	+ 5322.272670	+ 7373.396887
71-32	- 150878.408	- 39580.997	+ 6315.842808	+ 7443.462306
71-35	- 150878.421	- 39573.211	+ 6351.865737	+ 5740.328088
71-36	- 150878.429	- 39558.176	+ 5741.865519	+ 4562.220096
71-31	- 150891.537	- 39557.915	+ 5325.256512	+ 4542.215535
			+ 29057.103246	+ 29661.622912
		倍面積	= 604.519666	
		面積	= 302.259833	

9 LOT

点 名	X	Y	(X-X0)*(YN-1-Y0)	(XN-1-X0)*(Y-Y0)
X0·Y0	- 150800.000	- 39500.000		
71-32	- 150878.408	- 39580.997		
71-9	- 150877.761	- 39581.018	+ 6298.407717	+ 6352.459344

* * * * * 各 筆 面 積 計 算 書 * * * * *

点 名	X	Y	(X-X0)*(YN-1-Y0)	(XN-1-X0)*(Y-Y0)
71-33	- 150872.661	- 39580.677	+ 5886.848898	+ 6273.524197
71-34	- 150872.670	- 39573.194	+ 5862.797590	+ 5318.349234
71-35	- 150878.421	- 39573.211	+ 5739.946674	+ 5320.243370
71-32	- 150878.408	- 39580.997	+ 5740.328088	+ 6351.865737
			+ 29528.328967	+ 29616.441882
		倍面積	= 88.112915	
		面積	= 44.056457	

10 LOT

点 名	X	Y	(X-X0)*(YN-1-Y0)	(XN-1-X0)*(Y-Y0)
X0-Y0	- 150800.000	- 39500.000		
71-33	- 150872.661	- 39580.677		
71-1	- 150859.386	- 39579.788	+ 4791.084322	+ 5797.475868
71-14	- 150859.867	- 39573.156	+ 4776.668196	+ 4344.442216
71-34	- 150872.670	- 39573.194	+ 5316.246520	+ 4381.905198
71-33	- 150872.661	- 39580.677	+ 5318.349234	+ 5862.797590
			+ 20202.348272	+ 20386.620872
		倍面積	= 184.272600	
		面積	= 92.136300	

11 LOT

点 名	X	Y	(X-X0)*(YN-1-Y0)	(XN-1-X0)*(Y-Y0)
X0-Y0	- 150800.000	- 39500.000		
71-14	- 150859.867	- 39573.156		
71-15	- 150861.345	- 39552.768	+ 4487.754820	+ 3159.061856
71-37	- 150878.400	- 39552.749	+ 4137.011200	+ 3235.887405
71-36	- 150878.429	- 39558.176	+ 4137.051321	+ 4560.998400
71-35	- 150878.421	- 39573.211	+ 4562.220096	+ 5741.865519
71-14	- 150859.867	- 39573.156	+ 4382.922937	+ 5736.966676
			+ 21706.960374	+ 22434.779856
		倍面積	= 727.819482	
		面積	= 363.909741	

12 LOT

点 名	X	Y	(X-X0)*(YN-1-Y0)	(XN-1-X0)*(Y-Y0)
X0-Y0	- 150800.000	- 39500.000		
71-15	- 150861.345	- 39552.768		
71-16	- 150861.956	- 39544.345	+ 3269.294208	+ 2720.344025
71-39	- 150878.435	- 39544.312	+ 3478.200075	+ 2745.394272
71-37	- 150878.400	- 39552.749	+ 3474.060800	+ 4137.367815
71-15	- 150861.345	- 39552.768	+ 3235.887405	+ 4137.011200
			+ 13457.442488	+ 13740.117312
		倍面積	= 282.674824	
		面積	= 141.337412	

* * * * * 各 筆 面 積 計 算 書 * * * * *

13 LOT

点 名	X	Y	(X-XD)*(YN-1-YD)	(XN-1-XD)*(Y-YD)
XD·YD	- 150800.000	- 39500.000		
71-16	- 150861.956	- 39544.345		
71-17	- 150862.586	- 39535.650	+ 2775.376170	+ 2208.731400
71-41	- 150878.471	- 39535.639	+ 2797.491150	+ 2230.502454
71-39	- 150878.435	- 39544.312	+ 2795.344965	+ 3477.206952
71-16	- 150861.956	- 39544.345	+ 2745.394272	+ 3478.200075
			+ 11113.606557	+ 11394.640881
		倍面積	= 281.034324	
		面積	= 140.517162	

14 LOT

点 名	X	Y	(X-XD)*(YN-1-YD)	(XN-1-XD)*(Y-YD)
XD·YD	- 150800.000	- 39500.000		
71-17	- 150862.586	- 39535.650		
71-18	- 150863.237	- 39526.675	+ 2254.399050	+ 1669.481550
71-42	- 150878.475	- 39526.749	+ 2093.320625	+ 1691.526513
71-41	- 150878.471	- 39535.639	+ 2099.020779	+ 2796.770525
71-17	- 150862.586	- 39535.650	+ 2230.502454	+ 2797.491150
			+ 8677.242908	+ 8955.269738
		倍面積	= 278.026830	
		面積	= 139.013415	

15 LOT

点 名	X	Y	(X-XD)*(YN-1-YD)	(XN-1-XD)*(Y-YD)
XD·YD	- 150800.000	- 39500.000		
71-18	- 150863.237	- 39526.675		
71-2	- 150863.739	- 39519.746	+ 1700.237825	+ 1248.677802
71-19	- 150862.206	- 39517.433	+ 1228.319676	+ 1111.161987
71-45	- 150878.508	- 39517.458	+ 1368.629964	+ 1085.992348
71-44	- 150878.537	- 39523.180	+ 1371.098946	+ 1819.815440
71-42	- 150878.475	- 39526.749	+ 1819.050500	+ 2100.786213
71-18	- 150863.237	- 39526.675	+ 1691.526513	+ 2093.320625
			+ 9178.863424	+ 9459.754415
		倍面積	= 280.890991	
		面積	= 140.445495	

16 LOT

点 名	X	Y	(X-XD)*(YN-1-YD)	(XN-1-XD)*(Y-YD)
XD·YD	- 150800.000	- 39500.000		
71-19	- 150862.206	- 39517.433		
71-3	- 150860.784	- 39515.288	+ 1059.647472	+ 951.005328

* * * * * 各 筆 面 積 計 算 書 * * * * *

点 名	X	Y	(X-X0)*(YN-1-Y0)	(XN-1-X0)*(Y-Y0)
71-20	- 150861.185	- 39509.615	+ 935.396280	+ 584.438160
71-47	- 150878.520	- 39509.720	+ 754.969800	+ 594.718200
71-45	- 150878.508	- 39517.458	+ 763.097760	+ 1370.802160
71-19	- 150862.206	- 39517.433	+ 1085.992348	+ 1368.629964
			+ 4599.103660	+ 4869.593812
		倍面積	= 270.490152	
		面積	= 135.245076	

17 LOT

点 名	X	Y	(X-X0)*(YN-1-Y0)	(XN-1-X0)*(Y-Y0)
X0-Y0	- 150800.000	- 39500.000		
71-20	- 150861.185	- 39509.615		
71-21	- 150861.735	- 39501.829	+ 593.582025	+ 111.907365
71-48	- 150878.532	- 39501.893	+ 143.635028	+ 116.864355
71-47	- 150878.520	- 39509.720	+ 148.638360	+ 763.331040
71-20	- 150861.185	- 39509.615	+ 594.718200	+ 754.969800
			+ 1480.573613	+ 1747.072560
		倍面積	= 266.498947	
		面積	= 133.249473	

18 LOT

点 名	X	Y	(X-X0)*(YN-1-Y0)	(XN-1-X0)*(Y-Y0)
X0-Y0	- 150800.000	- 39400.000		
71-21	- 150861.735	- 39501.829		
71-22	- 150862.016	- 39497.860	+ 6315.027264	+ 6041.387100
71-50	- 150878.537	- 39497.927	+ 7685.630820	+ 6073.040832
71-48	- 150878.532	- 39501.893	+ 7690.403164	+ 8002.370541
71-21	- 150861.735	- 39501.829	+ 6290.364355	+ 7996.835028
			+ 27981.425603	+ 28113.633501
		倍面積	= 132.207898	
		面積	= 66.103949	

19 LOT

点 名	X	Y	(X-X0)*(YN-1-Y0)	(XN-1-X0)*(Y-Y0)
X0-Y0	- 150800.000	- 39400.000		
71-22	- 150862.016	- 39497.860		
71-23	- 150862.799	- 39486.775	+ 6145.510140	+ 5381.438400
71-51	- 150878.554	- 39486.792	+ 6816.523350	+ 5450.450808
71-50	- 150878.537	- 39497.927	+ 6816.383304	+ 7692.557558
71-22	- 150862.016	- 39497.860	+ 6073.040832	+ 7685.630820
			+ 25851.457626	+ 26210.077586
		倍面積	= 358.619960	
		面積	= 179.309980	

* * * * * 各 筆 面 積 計 算 書 * * * * *

20 LOT

点 名	X	Y	(X-X0)*(YN-1-Y0)	(XN-1-X0)*(Y-Y0)
X0-Y0	- 150800.000	- 39400.000		
71-23	- 150862.799	- 39486.775		
71-24	- 150862.897	- 39485.382	+ 5457.887175	+ 5361.904218
71-52	- 150878.556	- 39485.461	+ 6707.268392	+ 5375.240517
71-51	- 150878.554	- 39486.792	+ 6713.303394	+ 6818.032352
71-23	- 150862.799	- 39486.775	+ 5450.450808	+ 6816.523350
			+ 24328.909769	+ 24371.700437
		倍面積	= 42.790668	
		面積	= 21.395334	

4 区切り

点 名	X	Y	(X-X0)*(YN-1-Y0)	(XN-1-X0)*(Y-Y0)
X0-Y0	- 150800.000	- 39400.000		
71-4	- 150863.567	- 39475.910		
71-10	- 150863.471	- 39477.265	+ 4818.083610	+ 4911.504255
71-11	- 150864.957	- 39475.943	+ 5018.902605	+ 4820.178153
71-4	- 150863.567	- 39475.910	+ 4827.468681	+ 4930.885870
			+ 14664.454896	+ 14662.568278
		倍面積	= 1.886618	
		面積	= 0.943309	

5 区切り

点 名	X	Y	(X-X0)*(YN-1-Y0)	(XN-1-X0)*(Y-Y0)
X0-Y0	- 150800.000	- 39400.000		
71-5	- 150890.216	- 39476.549		
71-12	- 150888.901	- 39476.517	+ 6805.282649	+ 6903.057672
71-13	- 150890.204	- 39478.012	+ 6902.139468	+ 6935.344812
71-5	- 150890.216	- 39476.549	+ 7037.930592	+ 6905.025996
			+ 20745.352709	+ 20743.428480
		倍面積	= 1.924229	
		面積	= 0.962114	