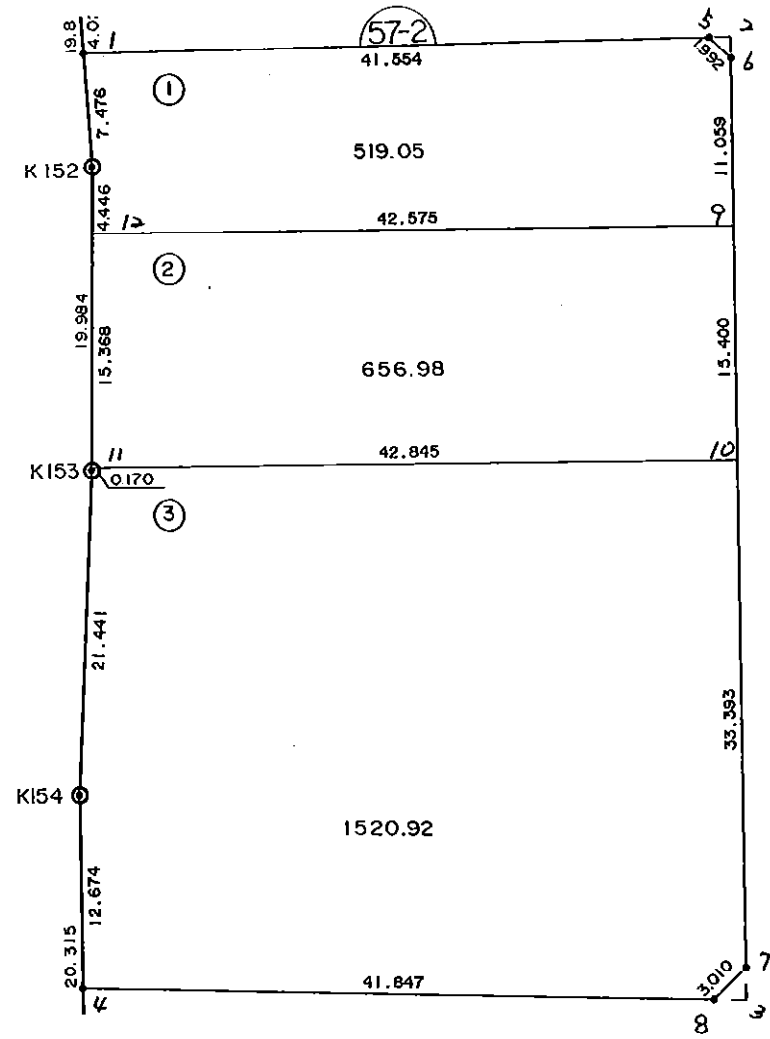


5 7 - 2 B L O C K

57-
B
L
O
C
K



* * * 各筆面積 集計表 * * *

街区名・筆名	各筆面積	隅切面積
57-2 BLOCK	2696.94	
1 LOT	519.05	
2 LOT	656.98	
3 LOT	1520.92	
2 入ミキリ		1.00
3 入ミキリ		2.33
合計 =	2696.95	3.33

* * * * * 各 筆 面 積 計 算 書 * * * * *

57-2 BLOCK

点 名	X	Y	(X-X0)*(YN-1-Y0)	(XN-1-X0)*(Y-Y0)
X0·Y0	- 150700.000	- 39300.000		
57-2-1	- 150722.886	- 39363.171		
57-2-5	- 150721.972	- 39321.627	+ 1387.993212	+ 494.955522
57-2-6	- 150723.352	- 39320.190	+ 505.033704	+ 443.614680
57-2-7	- 150783.201	- 39319.646	+ 1679.828190	+ 458.773392
57-2-8	- 150785.317	- 39321.787	+ 1676.137782	+ 1812.700187
57-2-4	- 150784.417	- 39363.625	+ 1839.193179	+ 5428.294125
K154	- 150771.744	- 39363.756	+ 4564.712000	+ 5382.090252
K153	- 150750.325	- 39362.794	+ 3208.520700	+ 4505.092736
K152	- 150730.342	- 39362.624	+ 1905.295548	+ 3151.552800
57-2-1	- 150722.886	- 39363.171	+ 1433.212864	+ 1916.734482
			+ 18199.927179	+ 23593.808176
		倍面積	= 5393.880997	
		面積	= 2696.940498	

1 LOT

点 名	X	Y	(X-X0)*(YN-1-Y0)	(XN-1-X0)*(Y-Y0)
X0·Y0	- 150700.000	- 39300.000		
57-2-1	- 150722.886	- 39363.171		
57-2-5	- 150721.972	- 39321.627	+ 1387.993212	+ 494.955522
57-2-6	- 150723.352	- 39320.190	+ 505.033704	+ 443.614680
57-2-9	- 150734.411	- 39320.089	+ 694.758090	+ 469.118328
57-2-12	- 150734.788	- 39362.662	+ 698.856132	+ 2156.262082
K152	- 150730.342	- 39362.624	+ 1901.290404	+ 2178.563712
57-2-1	- 150722.886	- 39363.171	+ 1433.212864	+ 1916.734482
			+ 6621.144406	+ 7659.248806
		倍面積	= 1038.104400	
		面積	= 519.052200	

2 LOT

点 名	X	Y	(X-X0)*(YN-1-Y0)	(XN-1-X0)*(Y-Y0)
X0·Y0	- 150700.000	- 39300.000		
57-2-9	- 150734.411	- 39320.089		
57-2-10	- 150749.810	- 39319.949	+ 1000.633090	+ 686.465039
57-2-11	- 150750.155	- 39362.793	+ 1000.542095	+ 3127.719330
57-2-12	- 150734.788	- 39362.662	+ 2184.442884	+ 3142.812610
57-2-9	- 150734.411	- 39320.089	+ 2156.262082	+ 698.856132
			+ 6341.880151	+ 7655.853111
		倍面積	= 1313.972960	
		面積	= 656.986480	

* * * * * 各 筆 面 積 計 算 書 * * * * *

3 LOT

点 名	X	Y	(X-X0)*(YN-1-Y0)	(XN-1-X0)*(Y-Y0)
X0·Y0	- 150700.000	- 39300.000		
57-2-10	- 150749.810	- 39319.949		
57-2-7	- 150783.201	- 39319.646	+ 1659.776749	+ 978.567260
57-2-8	- 150785.317	- 39321.787	+ 1676.137782	+ 1812.700187
57-2-4	- 150784.417	- 39363.625	+ 1839.193179	+ 5428.294125
K154	- 150771.744	- 39363.756	+ 4564.712000	+ 5382.090252
K153	- 150750.325	- 39362.794	+ 3208.520700	+ 4505.092736
57-2-11	- 150750.155	- 39362.793	+ 3149.433070	+ 3160.057725
57-2-10	- 150749.810	- 39319.949	+ 3127.719330	+ 1000.542095
			+ 19225.492810	+ 22267.344380
		倍面積	= 3041.851570	
		面積	= 1520.925785	

2 区切り

点 名	X	Y	(X-X0)*(YN-1-Y0)	(XN-1-X0)*(Y-Y0)
X0·Y0	- 150700.000	- 39300.000		
57-2-2	- 150721.941	- 39320.203		
57-2-5	- 150721.972	- 39321.627	+ 443.900316	+ 474.518007
57-2-6	- 150723.352	- 39320.190	+ 505.033704	+ 443.614680
57-2-2	- 150721.941	- 39320.203	+ 442.988790	+ 471.780456
			+ 1391.922810	+ 1389.913143
		倍面積	= 2.009667	
		面積	= 1.004833	

3 区切り

点 名	X	Y	(X-X0)*(YN-1-Y0)	(XN-1-X0)*(Y-Y0)
X0·Y0	- 150700.000	- 39300.000		
57-2-3	- 150785.364	- 39319.626		
57-2-7	- 150783.201	- 39319.646	+ 1632.902826	+ 1677.061144
57-2-8	- 150785.317	- 39321.787	+ 1676.137782	+ 1812.700187
57-2-3	- 150785.364	- 39319.626	+ 1859.825468	+ 1674.431442
			+ 5168.866076	+ 5164.192773
		倍面積	= 4.673303	
		面積	= 2.336651	