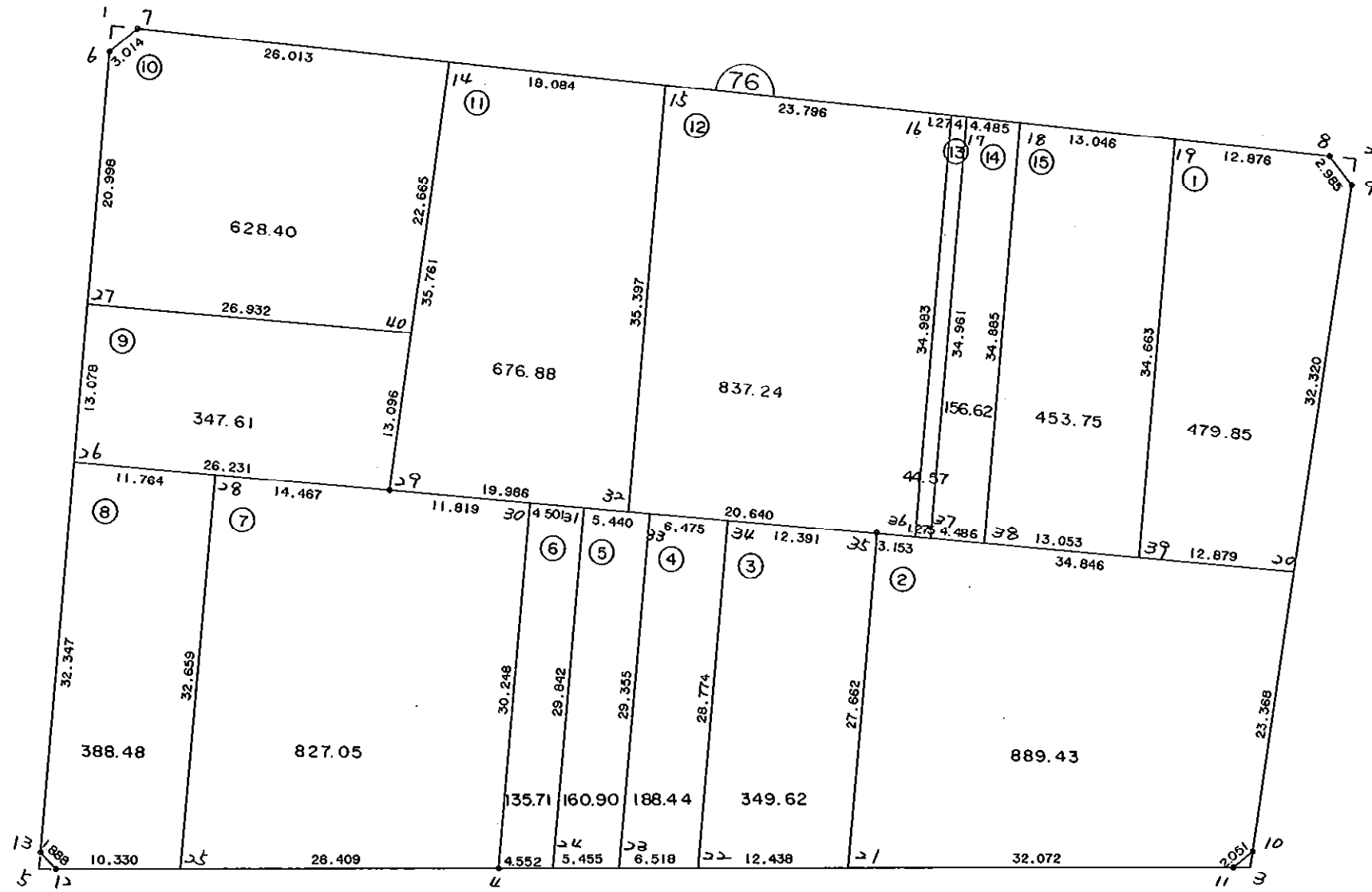


7 6 B L O C K

[



* * * 各筆面積 集計表 * * *

街区名・筆名	各筆面積	隅切面積
76 BLOCK	6564.59	
1 LOT	479.85	
2 LOT	889.43	
3 LOT	349.62	
4 LOT	188.44	
5 LOT	160.90	
6 LOT	135.71	
7 LOT	827.05	
8 LOT	388.48	
9 LOT	347.61	
10 LOT	628.40	
11 LOT	676.88	
12 LOT	837.24	
13 LOT	44.57	
14 LOT	156.62	
15 LOT	453.75	
1 スミキリ		2.31
2 スミキリ		2.32
3 スミキリ		0.90
5 スミキリ		0.97
合計 =	6564.55	6.50

* * * * * 各 筆 面 積 計 算 書 * * * * *

76 BLOCK

点 名	X	Y	(X-X0)*(YN-1-Y0)	(XN-1-X0)*(Y-Y0)
X0·Y0	- 150900.000	- 39300.000		
76-6	- 150966.392	- 39472.053		
76-7	- 150964.233	- 39469.950	+ 11051.480349	+ 11283.320400
76-8	- 150964.476	- 39370.376	+ 10957.696200	+ 4520.461608
76-9	- 150966.633	- 39368.313	+ 4689.364008	+ 4404.548988
76-10	- 151022.259	- 39370.916	+ 8351.879067	+ 4725.345828
76-11	- 151023.743	- 39372.332	+ 8775.358588	+ 8843.237988
76-4	- 151030.100	- 39433.035	+ 9410.393200	+ 16462.150005
76-12	- 151034.031	- 39469.563	+ 17830.814085	+ 22060.146300
76-13	- 151032.806	- 39471.000	+ 22518.983778	+ 22919.301000
76-6	- 150966.392	- 39472.053	+ 11353.032000	+ 22849.670718
			+104939.001275	+118068.182835
		倍面積	= 13129.181560	
		面積	= 6564.590780	

1 LOT

点 名	X	Y	(X-X0)*(YN-1-Y0)	(XN-1-X0)*(Y-Y0)
X0·Y0	- 150900.000	- 39300.000		
76-19	- 150964.445	- 39383.252		
76-8	- 150964.476	- 39370.376	+ 5367.755952	+ 4535.381320
76-9	- 150966.633	- 39368.313	+ 4689.364008	+ 4404.548988
76-20	- 150998.917	- 39369.823	+ 6757.317021	+ 4652.515959
76-39	- 150999.104	- 39382.700	+ 6919.738592	+ 8180.435900
76-19	- 150964.445	- 39383.252	+ 5329.601500	+ 8250.606208
			+ 29063.777073	+ 30023.488375
		倍面積	= 959.711302	
		面積	= 479.855651	

2 LOT

点 名	X	Y	(X-X0)*(YN-1-Y0)	(XN-1-X0)*(Y-Y0)
X0·Y0	- 150900.000	- 39300.000		
76-20	- 150998.917	- 39369.823		
76-10	- 151022.259	- 39370.916	+ 8536.490157	+ 7014.797972
76-11	- 151023.743	- 39372.332	+ 8775.358588	+ 8843.237988
76-21	- 151027.083	- 39404.230	+ 9192.167556	+ 12897.732890
76-35	- 150999.424	- 39404.665	+ 10362.963520	+ 13301.142195
76-20	- 150998.917	- 39369.823	+ 10353.147805	+ 6942.081952
			+ 47220.127626	+ 48998.992997
		倍面積	= 1778.865371	
		面積	= 889.432685	

* * * * * 各 筆 面 積 計 算 書 * * * * *

3 LOT

点 名	X	Y	(X-X0)*(YN-1-Y0)	(XN-1-X0)*(Y-Y0)
X0·Y0	- 150900.000	- 39400.000		
76-21	- 151027.083	- 39404.230		
76-22	- 151028.379	- 39416.600	+ 543.043170	+ 2109.577800
76-34	- 150999.609	- 39417.055	+ 1653.509400	+ 2189.503845
76-35	- 150999.424	- 39404.665	+ 1695.676320	+ 464.675985
76-21	- 151027.083	- 39404.230	+ 592.842195	+ 420.563520
			+ 4485.071085	+ 5184.321150
		倍面積	= 699.250065	
		面積	= 349.625032	

4 LOT

点 名	X	Y	(X-X0)*(YN-1-Y0)	(XN-1-X0)*(Y-Y0)
X0·Y0	- 150900.000	- 39400.000		
76-22	- 151028.379	- 39416.600		
76-23	- 151029.058	- 39423.083	+ 2142.362800	+ 2963.372457
76-33	- 150999.706	- 39423.529	+ 2301.513598	+ 3036.605682
76-34	- 150999.609	- 39417.055	+ 2343.700161	+ 1700.485830
76-22	- 151028.379	- 39416.600	+ 2189.503845	+ 1653.509400
			+ 8977.080404	+ 9353.973369
		倍面積	= 376.892965	
		面積	= 188.446482	

5 LOT

点 名	X	Y	(X-X0)*(YN-1-Y0)	(XN-1-X0)*(Y-Y0)
X0·Y0	- 150900.000	- 39400.000		
76-23	- 151029.058	- 39423.083		
76-24	- 151029.626	- 39428.508	+ 2992.156958	+ 3679.185464
76-31	- 150999.788	- 39428.968	+ 2844.756304	+ 3755.005968
76-33	- 150999.706	- 39423.529	+ 2888.283408	+ 2347.911852
76-23	- 151029.058	- 39423.083	+ 3036.605682	+ 2301.513598
			+ 11761.802352	+ 12083.616882
		倍面積	= 321.814530	
		面積	= 160.907265	

6 LOT

点 名	X	Y	(X-X0)*(YN-1-Y0)	(XN-1-X0)*(Y-Y0)
X0·Y0	- 150900.000	- 39400.000		
76-24	- 151029.626	- 39428.508		
76-4	- 151030.100	- 39433.035	+ 3708.890800	+ 4282.194910
76-30	- 150999.855	- 39433.468	+ 3298.709925	+ 4354.186800

* * * * * 各 筆 面 積 計 算 書 * * * * *

点 名	X	Y	(X-X0)*(YN-1-Y0)	(XN-1-X0)*(Y-Y0)
76-31	- 150999.788	- 39428.968	+ 3339.704784	+ 2892.599640
76-24	- 151029.626	- 39428.508	+ 3755.005968	+ 2844.756304
			+ 14102.311477	+ 14373.737654
		倍面積	= 271.426177	
		面積	= 135.713088	

7 LOT

点 名	X	Y	(X-X0)*(YN-1-Y0)	(XN-1-X0)*(Y-Y0)
X0·Y0	- 150900.000	- 39400.000		
76-4	- 151030.100	- 39433.035		
76-25	- 151032.926	- 39459.292	+ 4391.210410	+ 7713.889200
76-28	- 151000.270	- 39459.751	+ 5945.208840	+ 7942.461426
76-29	- 151000.032	- 39445.286	+ 5977.012032	+ 4540.827220
76-30	- 150999.855	- 39433.468	+ 4522.033530	+ 3347.870976
76-4	- 151030.100	- 39433.035	+ 4354.186800	+ 3298.709925
			+ 25189.651612	+ 26843.758747
		倍面積	= 1654.107135	
		面積	= 827.053567	

8 LOT

点 名	X	Y	(X-X0)*(YN-1-Y0)	(XN-1-X0)*(Y-Y0)
X0·Y0	- 151000.000	- 39400.000		
76-25	- 151032.926	- 39459.292		
76-12	- 151034.031	- 39469.563	+ 2017.766052	+ 2290.431338
76-13	- 151032.806	- 39471.000	+ 2282.083778	+ 2416.201000
76-26	- 151000.463	- 39471.513	+ 32.873000	+ 2346.055478
76-28	- 151000.270	- 39459.751	+ 19.308510	+ 27.664713
76-25	- 151032.926	- 39459.292	+ 1967.361426	+ 16.008840
			+ 6319.392766	+ 7096.361369
		倍面積	= 776.968603	
		面積	= 388.484301	

9 LOT

点 名	X	Y	(X-X0)*(YN-1-Y0)	(XN-1-X0)*(Y-Y0)
X0·Y0	- 150900.000	- 39400.000		
76-26	- 151000.463	- 39471.513		
76-27	- 150987.387	- 39471.720	+ 6249.306531	+ 7205.206360
76-40	- 150986.945	- 39444.792	+ 6235.695400	+ 3914.238504
76-29	- 151000.032	- 39445.286	+ 4480.633344	+ 3937.391270
76-26	- 151000.463	- 39471.513	+ 4549.567418	+ 7153.588416
			+ 21515.202693	+ 22210.424550
		倍面積	= 695.221857	
		面積	= 347.610928	

* * * * * 各 筆 面 積 計 算 書 * * * * *

10 LOT

点 名	X	Y	(X-X0)*(YN-1-Y0)	(XN-1-X0)*(Y-Y0)
X0·Y0	- 150900.000	- 39400.000		
76-27	- 150987.387	- 39471.720		
76-6	- 150966.392	- 39472.053	+ 4761.634240	+ 6296.495511
76-7	- 150964.233	- 39469.950	+ 4628.180349	+ 4644.120400
76-14	- 150964.296	- 39443.937	+ 4497.505200	+ 2822.205321
76-40	- 150986.945	- 39444.792	+ 3820.102465	+ 2879.946432
76-27	- 150987.387	- 39471.720	+ 3914.238504	+ 6235.695400
			+ 21621.660758	+ 22878.463064
		倍面積	= 1256.802306	
		面積	= 628.401153	

11 LOT

点 名	X	Y	(X-X0)*(YN-1-Y0)	(XN-1-X0)*(Y-Y0)
X0·Y0	- 150900.000	- 39400.000		
76-14	- 150964.296	- 39443.937		
76-15	- 150964.340	- 39425.853	+ 2826.906580	+ 1662.244488
76-32	- 150999.733	- 39425.302	+ 2578.397249	+ 1627.930680
76-29	- 151000.032	- 39445.286	+ 2531.009664	+ 4516.508638
76-14	- 150964.296	- 39443.937	+ 2911.708656	+ 4395.105984
			+ 10848.022149	+ 12201.789790
		倍面積	= 1353.767641	
		面積	= 676.883820	

12 LOT

点 名	X	Y	(X-X0)*(YN-1-Y0)	(XN-1-X0)*(Y-Y0)
X0·Y0	- 150900.000	- 39400.000		
76-15	- 150964.340	- 39425.853		
76-16	- 150964.399	- 39402.057	+ 1664.907347	+ 132.347380
76-36	- 150999.378	- 39401.512	+ 204.420546	+ 97.371288
76-35	- 150999.424	- 39404.665	+ 150.329088	+ 463.598370
76-32	- 150999.733	- 39425.302	+ 465.254445	+ 2515.626048
76-15	- 150964.340	- 39425.853	+ 1627.930680	+ 2578.397249
			+ 4112.842106	+ 5787.340335
		倍面積	= 1674.498229	
		面積	= 837.249114	

13 LOT

点 名	X	Y	(X-X0)*(YN-1-Y0)	(XN-1-X0)*(Y-Y0)
X0·Y0	- 150900.000	- 39400.000		
76-16	- 150964.399	- 39402.057		
76-17	- 150964.402	- 39400.783	+ 132.474914	+ 50.424417

* * * * * 各 筆 面 積 計 算 書 * * * * *

点 名	X	Y	(X-X0)*(Yn-1-Y0)	(Xn-1-X0)*(Y-Y0)
76-37	- 150999.359	- 39400.237	+ 77.798097	+ 15.263274
76-36	- 150999.378	- 39401.512	+ 23.552586	+ 150.230808
76-16	- 150964.399	- 39402.057	+ 97.371288	+ 204.420546
			+ 331.196885	+ 420.339045
		倍面積	= 89.142160	
		面積	= 44.571080	

14 LOT

点 名	X	Y	(X-X0)*(Yn-1-Y0)	(Xn-1-X0)*(Y-Y0)
X0·Y0	- 150900.000	- 39300.000		
76-17	- 150964.402	- 39400.783		
76-18	- 150964.413	- 39396.298	+ 6491.735379	+ 6201.783796
76-38	- 150999.294	- 39395.752	+ 9561.813612	+ 6167.673576
76-37	- 150999.359	- 39400.237	+ 9513.822968	+ 9952.932678
76-17	- 150964.402	- 39400.783	+ 6455.463274	+ 10013.698097
			+ 32022.835233	+ 32336.088147
		倍面積	= 313.252914	
		面積	= 156.626457	

15 LOT

点 名	X	Y	(X-X0)*(Yn-1-Y0)	(Xn-1-X0)*(Y-Y0)
X0·Y0	- 150900.000	- 39300.000		
76-18	- 150964.413	- 39396.298		
76-19	- 150964.445	- 39383.252	+ 6205.924610	+ 5362.511076
76-39	- 150999.104	- 39382.700	+ 8250.606208	+ 5329.601500
76-38	- 150999.294	- 39395.752	+ 8211.613800	+ 9489.406208
76-18	- 150964.413	- 39396.298	+ 6167.673576	+ 9561.813612
			+ 28835.818194	+ 29743.332396
		倍面積	= 907.514202	
		面積	= 453.757101	

1 区切り

点 名	X	Y	(X-X0)*(Yn-1-Y0)	(Xn-1-X0)*(Y-Y0)
X0·Y0	- 150900.000	- 39400.000		
76-1	- 150964.228	- 39472.087		
76-6	- 150966.392	- 39472.053	+ 4786.000104	+ 4627.820084
76-7	- 150964.233	- 39469.950	+ 4628.180349	+ 4644.120400
76-1	- 150964.228	- 39472.087	+ 4492.748600	+ 4630.364271
			+ 13906.929053	+ 13902.304755
		倍面積	= 4.624298	
		面積	= 2.312149	

* * * * * 各 筆 面 積 計 算 書 * * * * *

2 区画

点 名	X	Y	(X-X0)*(YN-1-Y0)	(XN-1-X0)*(Y-Y0)
X0-Y0	- 150900.000	- 39300.000		
76-2	- 150964.481	- 39368.212		
76-8	- 150964.476	- 39370.376	+ 4398.036912	+ 4537.914856
76-9	- 150966.633	- 39368.313	+ 4689.364008	+ 4404.548988
76-2	- 150964.481	- 39368.212	+ 4404.890553	+ 4545.170196
			+ 13492.291473	+ 13487.634040
		倍面積	= 4.657433	
		面積	= 2.328716	

3 区画

点 名	X	Y	(X-X0)*(YN-1-Y0)	(XN-1-X0)*(Y-Y0)
X0-Y0	- 151000.000	- 39300.000		
76-3	- 151023.601	- 39370.979		
76-10	- 151022.259	- 39370.916	+ 1579.921561	+ 1673.688516
76-11	- 151023.743	- 39372.332	+ 1683.758588	+ 1610.037988
76-3	- 151023.601	- 39370.979	+ 1707.107532	+ 1685.254397
			+ 4970.787681	+ 4968.980901
		倍面積	= 1.806780	
		面積	= 0.903390	

5 区画

点 名	X	Y	(X-X0)*(YN-1-Y0)	(XN-1-X0)*(Y-Y0)
X0-Y0	- 151000.000	- 39400.000		
76-5	- 151034.183	- 39470.978		
76-12	- 151034.031	- 39469.563	+ 2415.452318	+ 2377.872029
76-13	- 151032.806	- 39471.000	+ 2282.083778	+ 2416.201000
76-5	- 151034.183	- 39470.978	+ 2426.993000	+ 2328.504268
			+ 7124.529096	+ 7122.577297
		倍面積	= 1.951799	
		面積	= 0.975899	