

9

10

11

12

4

1,674.52

989.88

8,758.72

526.70

17.497

8.300

43.076

11.219

37.263

20.024

3.206

34.730

34.196

55.495

52.281

37

47

41.197

50

19.435

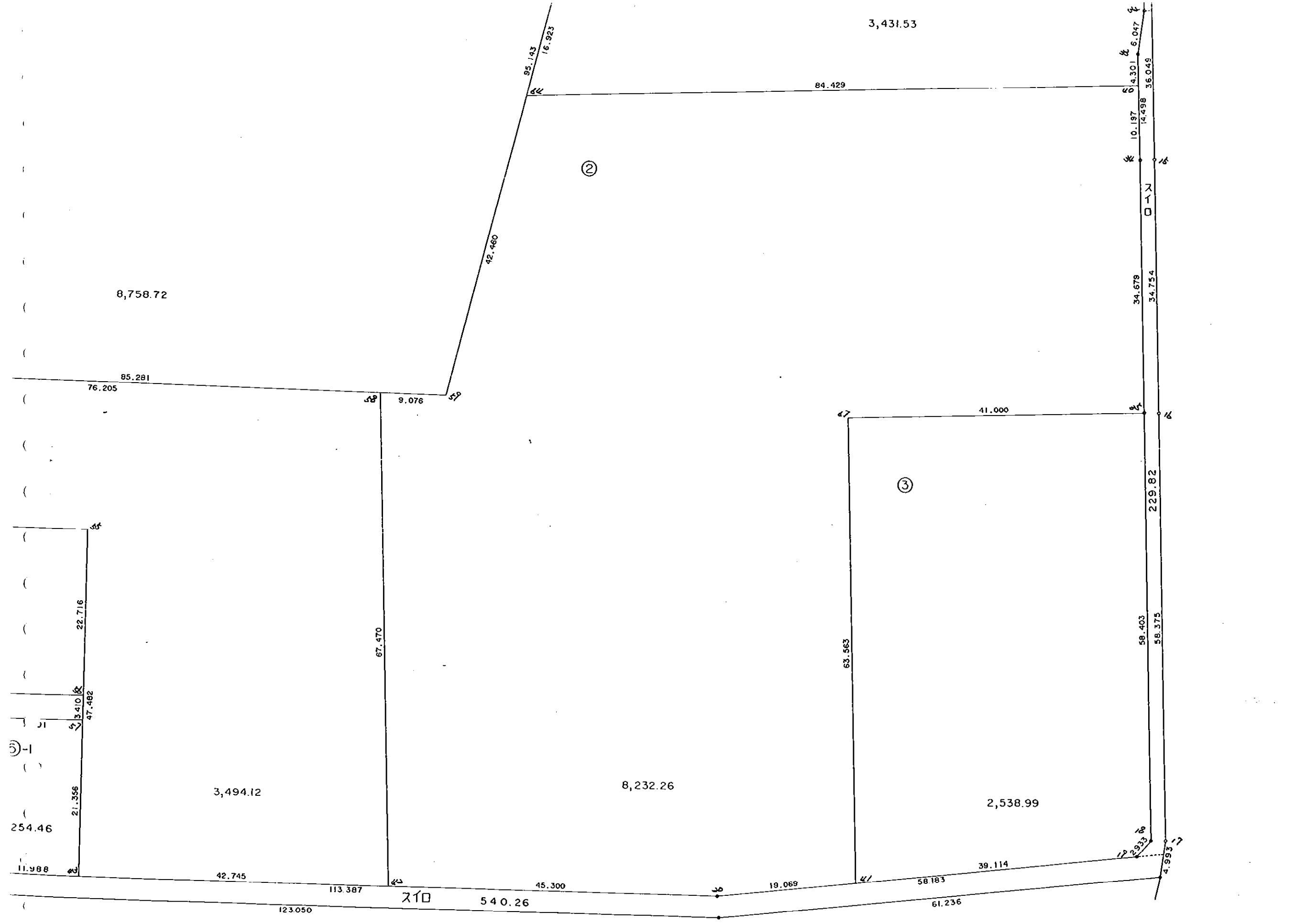
1.858

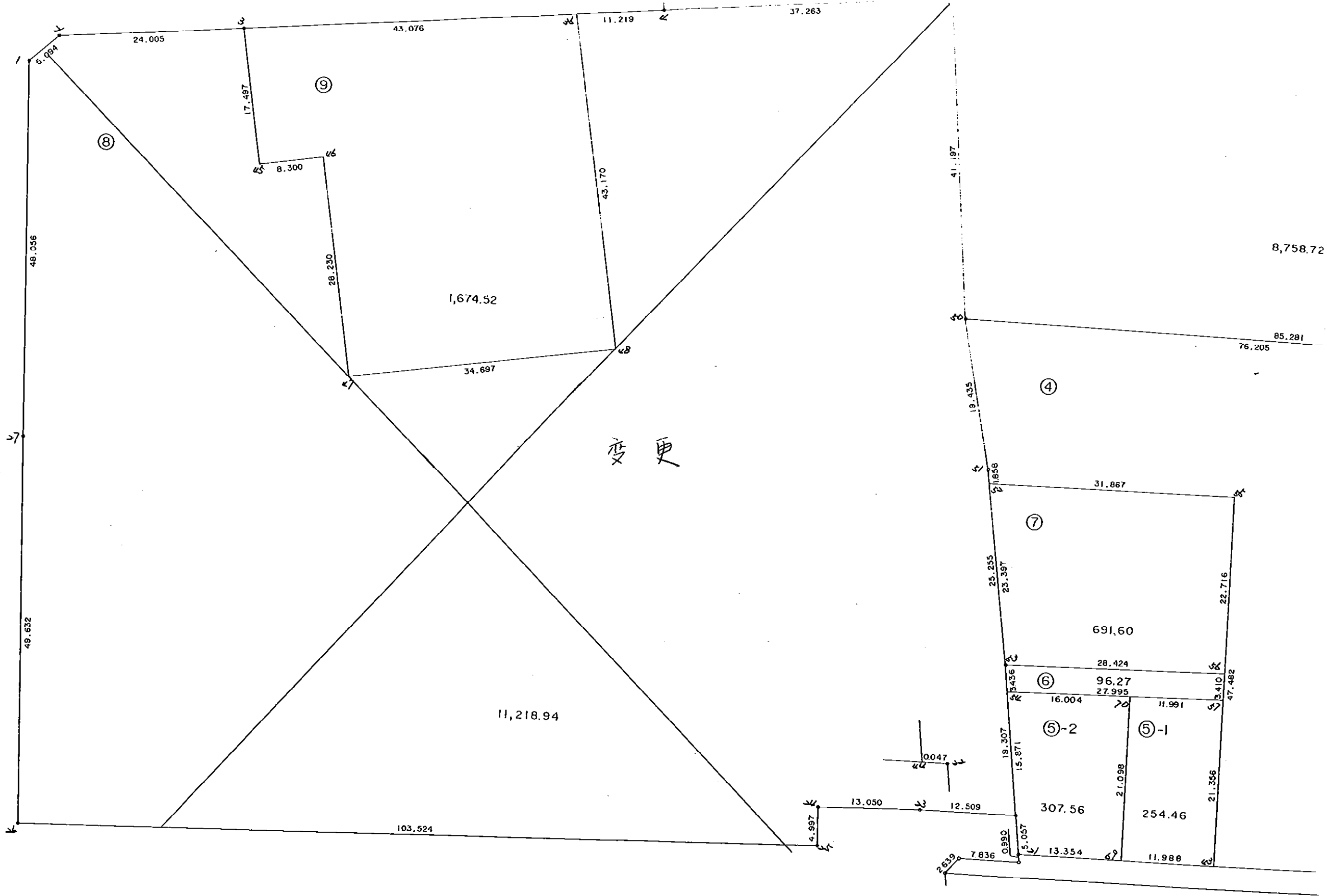
31.867

9.0

76.205

85.281





* * * 各筆面積 集計表 * * *

街区名・筆名	各筆面積	隔切面積
12-1 BLOCK	44811.74	
1 LOT	3431.53	
2 LOT	8232.26	
3 LOT	2538.99	
4 LOT	3494.12	
5-1 LOT	254.46	
5-2 LOT	307.56	
6 LOT	96.27	
7 LOT	691.60	
8 LOT	11218.94	
9 LOT	1674.52	
10 LOT	989.88	
11 LOT	8758.72	
12 LOT	526.70	
13 LOT	1187.38	
14 LOT	534.80	
ス イ 口	878.98	
合計 =	44811.66	0.00

103.85
229.82
540.26

* * * * * 各 筆 面 積 計 算 書 * * * * *

12-1 BLOCK

点 名	X	Y	(X-X0)*(YN-1-Y0)	(XN-1-X0)*(Y-Y0)
X0·Y0	- 149400.000	- 39600.000		
12-1-1	- 149510.610	- 39945.754		
12-1-2	- 149507.234	- 39941.939	+ 37076.584436	+ 37821.872790
12-1-3	- 149505.078	- 39918.031	+ 35930.266242	+ 34103.736254
12-1-4	- 149499.984	- 39863.975	+ 31798.011504	+ 27737.965050
12-1-5	- 149480.042	- 39865.787	+ 21129.086950	+ 26574.447408
12-1-6	- 149477.310	- 39864.109	+ 20547.992970	+ 21139.812578
12-1-7	- 149431.131	- 39748.575	+ 8221.977279	+ 11486.333250
12-1-8	- 149410.441	- 39709.291	+ 1551.271575	+ 3402.338121
12-1-9	- 149411.162	- 39706.404	+ 1219.906142	+ 1110.964164
12-1-10	- 149420.604	- 39700.044	+ 2192.348016	+ 1116.691128
12-1-11	- 149445.890	- 39706.876	+ 4591.019160	+ 2202.073104
12-1-12	- 149442.914	- 39645.844	+ 4586.476664	+ 2103.781160
12-1-13	- 149445.750	- 39642.773	+ 2097.363000	+ 1835.560522
12-1-14	- 149469.354	- 39642.094	+ 2966.478642	+ 1925.800500
12-1-15	- 149505.381	- 39640.828	+ 4435.907814	+ 2831.585112
12-1-16	- 149540.115	- 39639.641	+ 5720.615220	+ 4177.408221
12-1-17	- 149598.458	- 39637.718	+ 7867.073578	+ 5284.857570
12-2-5	- 149603.404	- 39638.400	+ 7671.992072	+ 7620.787200
12-2-4	- 149610.102	- 39699.269	+ 8067.916800	+ 20191.711676
12-2-1	- 149608.671	- 39822.311	+ 20714.561499	+ 46707.985722
12-2-2	- 149606.687	- 39820.571	+ 45948.793657	+ 46026.771141
12-2-3	- 149606.779	- 39812.736	+ 45609.450809	+ 43969.765632
12-1-21	- 149605.796	- 39812.851	+ 43780.217856	+ 44013.116929
12-1-22	- 149600.773	- 39813.438	+ 42734.733823	+ 43924.686648
12-1-23	- 149600.653	- 39825.993	+ 42826.975014	+ 45373.292589
12-1-24	- 149600.923	- 39839.040	+ 45407.191539	+ 47964.093120
12-1-25	- 149605.918	- 39838.896	+ 49222.638720	+ 47999.701008
12-1-26	- 149608.240	- 39942.394	+ 49747.703040	+ 70505.087692
12-1-27	- 149558.640	- 39944.185	+ 54317.384160	+ 71673.084400
12-1-1	- 149510.610	- 39945.754	+ 38070.302850	+ 54850.414560
			+686052.241031	+775675.725249
		倍面積	= 89623.484218	
		面積	= 44811.742109	

1 LOT

点 名	X	Y	(X-X0)*(YN-1-Y0)	(XN-1-X0)*(Y-Y0)
X0·Y0	- 149400.000	- 39600.000		
12-1-68	- 149446.761	- 39704.128		
12-1-29	- 149443.919	- 39646.201	+ 4573.197632	+ 2160.404961
12-1-30	- 149446.184	- 39643.755	+ 2133.746984	+ 1921.675845
12-1-31	- 149469.359	- 39643.092	+ 3034.803045	+ 1990.160928
12-1-32	- 149485.002	- 39642.603	+ 3662.906184	+ 2954.901477
12-1-33	- 149491.002	- 39643.353	+ 3876.958206	+ 3685.091706

* * * * * 各 筆 面 積 計 算 書 * * * * *

点 名	X	Y	(X-X0)*(YN-1-Y0)	(XN-1-X0)*(Y-Y0)
12-1-40	- 149495.300	- 39643.194	+ 4131.540900	+ 3930.740388
12-1-64	- 149498.181	- 39727.574	+ 4240.830114	+ 12157.802200
12-1-63	- 149481.773	- 39723.430	+ 10432.108702	+ 12118.480830
12-1-66	- 149480.818	- 39702.532	+ 9975.365740	+ 8384.349236
12-1-68	- 149446.761	- 39704.128	+ 4794.498852	+ 8415.416704
			+ 50855.956359	+ 57719.024275
		倍面積	= 6863.067916	
		面積	= 3431.533958	

2 LOT

点 名	X	Y	(X-X0)*(YN-1-Y0)	(XN-1-X0)*(Y-Y0)
X0·Y0	- 149400.000	- 39600.000		
12-1-40	- 149495.300	- 39643.194		
12-1-34	- 149505.490	- 39642.818	+ 4556.535060	+ 4080.555400
12-1-35	- 149540.149	- 39641.640	+ 6000.899882	+ 4392.603600
12-1-67	- 149541.498	- 39682.618	+ 5891.976720	+ 11578.830082
12-1-41	- 149605.026	- 39680.518	+ 16938.838068	+ 11393.135964
12-1-20	- 149607.118	- 39699.472	+ 16676.727124	+ 20394.346272
12-1-42	- 149606.590	- 39744.769	+ 20549.920480	+ 29984.265742
12-1-58	- 149539.158	- 39747.045	+ 20145.764502	+ 30378.026550
12-1-59	- 149539.348	- 39737.971	+ 20490.426660	+ 19199.768418
12-1-64	- 149498.181	- 39727.574	+ 13546.130751	+ 17777.181752
12-1-40	- 149495.300	- 39643.194	+ 12157.802200	+ 4240.830114
			+136955.021447	+153419.543894
		倍面積	= 16464.522447	
		面積	= 8232.261223	

3 LOT

点 名	X	Y	(X-X0)*(YN-1-Y0)	(XN-1-X0)*(Y-Y0)
X0·Y0	- 149500.000	- 39600.000		
12-1-35	- 149540.149	- 39641.640		
12-1-18	- 149598.520	- 39639.718	+ 4102.372800	+ 1594.637982
12-1-19	- 149600.735	- 39641.640	+ 4000.992730	+ 4102.372800
12-1-41	- 149605.026	- 39680.518	+ 4373.282640	+ 8110.980730
12-1-67	- 149541.498	- 39682.618	+ 3341.335964	+ 8677.038068
12-1-35	- 149540.149	- 39641.640	+ 3317.030082	+ 1727.976720
			+ 19135.014216	+ 24213.006300
		倍面積	= 5077.992084	
		面積	= 2538.996042	

4 LOT

点 名	X	Y	(X-X0)*(YN-1-Y0)	(XN-1-X0)*(Y-Y0)
X0·Y0	- 149500.000	- 39700.000		
12-1-42	- 149606.590	- 39744.769		
12-1-43	- 149606.091	- 39787.511	+ 4749.587979	+ 9327.797490

* * * * * 各 筆 面 積 計 算 書 * * * * *

点 名	X	Y	(X-X0)*(YN-1-Y0)	(XN-1-X0)*(Y-Y0)
12-1-55	- 149558.611	- 39787.175	+ 5129.107221	+ 9248.482925
12-1-52	- 149558.435	- 39819.042	+ 5094.071125	+ 6977.170662
12-1-51	- 149556.595	- 39819.303	+ 6737.181990	+ 6971.470805
12-1-50	- 149537.561	- 39823.233	+ 4481.139983	+ 6974.371635
12-1-58	- 149539.158	- 39747.045	+ 4825.557814	+ 1767.057245
12-1-42	- 149606.590	- 39744.769	+ 5014.526550	+ 1753.064502
			+ 36031.172662	+ 43019.415264
		倍面積	= 6988.242602	
		面積	= 3494.121301	

5-1 LOT

点 名	X	Y	(X-X0)*(YN-1-Y0)	(XN-1-X0)*(Y-Y0)
X0·Y0	- 149500.000	- 39700.000		
12-1-43	- 149606.091	- 39787.511		
12-1-69	- 149605.951	- 39799.498	+ 9271.877961	+ 10555.842318
12-1-70	- 149584.854	- 39799.350	+ 8442.803292	+ 10526.231850
12-1-57	- 149584.736	- 39787.360	+ 8418.521600	+ 7412.845440
12-1-43	- 149606.091	- 39787.511	+ 9268.109760	+ 7415.332096
			+ 35401.312613	+ 35910.251704
		倍面積	= 508.939091	
		面積	= 254.469545	

5-2 LOT

点 名	X	Y	(X-X0)*(YN-1-Y0)	(XN-1-X0)*(Y-Y0)
X0·Y0	- 149500.000	- 39700.000		
12-1-69	- 149605.951	- 39799.498		
12-1-21	- 149605.796	- 39812.851	+ 10526.490408	+ 11956.676301
12-1-22	- 149600.773	- 39813.438	+ 11372.333823	+ 12001.286648
12-1-44	- 149600.773	- 39813.485	+ 11431.487574	+ 11436.223905
12-1-54	- 149585.012	- 39815.354	+ 9647.586820	+ 11624.568642
12-1-70	- 149584.854	- 39799.350	+ 9788.248316	+ 8445.942200
12-1-69	- 149605.951	- 39799.498	+ 10526.231850	+ 8442.803292
			+ 63292.378791	+ 63907.500988
		倍面積	= 615.122197	
		面積	= 307.561098	

6 LOT

点 名	X	Y	(X-X0)*(YN-1-Y0)	(XN-1-X0)*(Y-Y0)
X0·Y0	- 149500.000	- 39700.000		
12-1-54	- 149585.012	- 39815.354		
12-1-53	- 149581.600	- 39815.759	+ 9412.886400	+ 9840.904108
12-1-56	- 149581.326	- 39787.336	+ 9414.216434	+ 7126.617600

* * * * * 各 筆 面 積 計 算 書 * * * * *

点 名	X	Y	(X-X0)*(YN-1-Y0)	(XN-1-X0)*(Y-Y0)
12-1-57	- 149584.736	- 39787.360	+ 7400.503296	+ 7104.639360
12-1-54	- 149585.012	- 39815.354	+ 7426.648320	+ 9774.636544
			+ 33654.254450	+ 33846.797612
		倍面積	= 192.543162	
		面積	= 96.271581	

7 LOT

点 名	X	Y	(X-X0)*(YN-1-Y0)	(XN-1-X0)*(Y-Y0)
X0·Y0	- 149500.000	- 39700.000		
12-1-53	- 149581.600	- 39815.759		
12-1-52	- 149558.435	- 39819.042	+ 6764.377165	+ 9713.827200
12-1-55	- 149558.611	- 39787.175	+ 6977.170662	+ 5094.071125
12-1-56	- 149581.326	- 39787.336	+ 7089.594050	+ 5118.850296
12-1-53	- 149581.600	- 39815.759	+ 7126.617600	+ 9414.216434
			+ 27957.759477	+ 29340.965055
		倍面積	= 1383.205578	
		面積	= 691.602789	

8 LOT

点 名	X	Y	(X-X0)*(YN-1-Y0)	(XN-1-X0)*(Y-Y0)
X0·Y0	- 149400.000	- 39800.000		
12-1-44	- 149600.773	- 39813.485		
12-1-23	- 149600.653	- 39825.993	+ 2705.805705	+ 5218.692589
12-1-24	- 149600.923	- 39839.040	+ 5222.591539	+ 7833.493120
12-1-25	- 149605.918	- 39838.896	+ 8039.038720	+ 7815.101008
12-1-26	- 149608.240	- 39942.394	+ 8099.703040	+ 29321.487692
12-1-27	- 149558.640	- 39944.185	+ 22589.384160	+ 30025.084400
12-1-1	- 149510.610	- 39945.754	+ 15948.302850	+ 23122.414560
12-1-2	- 149507.234	- 39941.939	+ 15629.784436	+ 15699.872790
12-1-3	- 149505.078	- 39918.831	+ 14914.666242	+ 12656.936254
12-1-45	- 149522.343	- 39915.194	+ 14440.266633	+ 12104.355132
12-1-46	- 149520.997	- 39907.004	+ 13938.128418	+ 13091.190372
12-1-47	- 149548.853	- 39902.427	+ 15927.866412	+ 12393.359719
12-1-48	- 149543.632	- 39868.125	+ 14711.794864	+ 10140.610625
12-1-36	- 149501.037	- 39875.145	+ 6883.145625	+ 10793.226640
12-1-4	- 149499.984	- 39863.975	+ 7513.297680	+ 6463.842075
12-1-49	- 149496.525	- 39826.873	+ 6175.186875	+ 2686.870032
12-1-50	- 149537.561	- 39823.233	+ 3696.676753	+ 2242.565325
12-1-51	- 149556.595	- 39819.303	+ 3638.171635	+ 2655.339983
12-1-53	- 149581.600	- 39815.759	+ 3505.424800	+ 2467.780605
12-1-44	- 149600.773	- 39813.485	+ 3163.981707	+ 2448.876000
			+186743.218094	+209181.038921
		倍面積	= 22437.880827	
		面積	= 11218.940413	

* * * * * 各 筆 面 積 計 算 書 * * * * *

9 LOT

点 名	X	Y	(X-X0)*(YN-1-Y0)	(XN-1-X0)*(Y-Y0)
X0·Y0	- 149500.000	- 39800.000		
12-1-3	- 149505.078	- 39918.031		
12-1-36	- 149501.037	- 39875.145	+ 122.398147	+ 381.586310
12-1-48	- 149543.632	- 39868.125	+ 3278.726640	+ 70.645625
12-1-47	- 149548.853	- 39902.427	+ 3328.110625	+ 4469.094864
12-1-46	- 149520.997	- 39907.004	+ 2150.659719	+ 5227.466412
12-1-45	- 149522.343	- 39915.194	+ 2390.790372	+ 2418.728418
12-1-3	- 149505.078	- 39918.031	+ 584.955132	+ 2637.166633
			+ 11855.640635	+ 15204.688262
		倍面積	= 3349.047627	
		面積	= 1674.523813	

10 LOT

点 名	X	Y	(X-X0)*(YN-1-Y0)	(XN-1-X0)*(Y-Y0)
X0·Y0	- 149400.000	- 39800.000		
12-1-4	- 149499.984	- 39863.975		
12-1-5	- 149480.042	- 39865.787	+ 5120.686950	+ 6577.647408
12-1-6	- 149477.310	- 39864.109	+ 5085.992970	+ 5131.412578
12-1-37	- 149464.420	- 39831.860	+ 4129.901780	+ 2463.096600
12-1-49	- 149496.525	- 39826.873	+ 3075.286500	+ 1731.158660
12-1-4	- 149499.984	- 39863.975	+ 2686.870032	+ 6175.186875
			+ 20098.738232	+ 22078.502121
		倍面積	= 1979.763889	
		面積	= 989.881944	

11 LOT

点 名	X	Y	(X-X0)*(YN-1-Y0)	(XN-1-X0)*(Y-Y0)
X0·Y0	- 149400.000	- 39700.000		
12-1-37	- 149464.420	- 39831.860		
12-1-38	- 149451.728	- 39800.106	+ 6820.854080	+ 6448.828520
12-1-61	- 149450.876	- 39747.832	+ 5092.992856	+ 2474.253696
12-1-60	- 149444.529	- 39747.593	+ 2129.911128	+ 2421.341468
12-1-62	- 149447.102	- 39714.673	+ 2241.725486	+ 653.374017
12-1-59	- 149539.348	- 39737.971	+ 2044.653204	+ 1788.510042
12-1-50	- 149537.561	- 39823.233	+ 5223.328731	+ 17172.272084
12-1-49	- 149496.525	- 39826.873	+ 11895.065325	+ 17452.776753
12-1-37	- 149464.420	- 39831.860	+ 8173.158660	+ 12727.786500
			+ 43621.689470	+ 61139.143080
		倍面積	= 17517.453610	
		面積	= 8758.726805	

* * * * * 各 筆 面 積 計 算 書 * * * * *

12 LOT

点 名	X	Y	(X-X0)*(YN-1-Y0)	(XN-1-X0)*(Y-Y0)
X0·Y0	- 149400.000	- 39700.000		
12-1-38	- 149451.728	- 39800.106		
12-1-7	- 149431.131	- 39748.575	+ 3116.399886	+ 2512.687600
12-1-39	- 149430.707	- 39747.770	+ 1491.592525	+ 1487.127870
12-1-60	- 149444.529	- 39747.593	+ 2127.150330	+ 1461.438251
12-1-61	- 149450.876	- 39747.832	+ 2421.341468	+ 2129.911128
12-1-38	- 149451.728	- 39800.106	+ 2474.253696	+ 5092.992856
			+ 11630.737905	+ 12684.157705
		倍面積	= 1053.419800	
		面積	= 526.709900	

13 LOT

点 名	X	Y	(X-X0)*(YN-1-Y0)	(XN-1-X0)*(Y-Y0)
X0·Y0	- 149400.000	- 39700.000		
12-1-39	- 149430.707	- 39747.770		
12-1-8	- 149410.441	- 39709.291	+ 498.766570	+ 285.298737
12-1-9	- 149411.162	- 39706.404	+ 103.706142	+ 66.864164
12-1-10	- 149420.604	- 39700.044	+ 131.948016	+ 0.491128
12-1-11	- 149445.890	- 39706.876	+ 2.019160	+ 141.673104
12-1-28	- 149446.909	- 39707.148	+ 322.546284	+ 328.021720
12-1-65	- 149447.675	- 39707.341	+ 340.780900	+ 344.358969
12-1-60	- 149444.529	- 39747.593	+ 326.887389	+ 2268.996275
12-1-39	- 149430.707	- 39747.770	+ 1461.438251	+ 2127.150330
			+ 3188.092712	+ 5562.854427
		倍面積	= 2374.761715	
		面積	= 1187.380857	

14 LOT

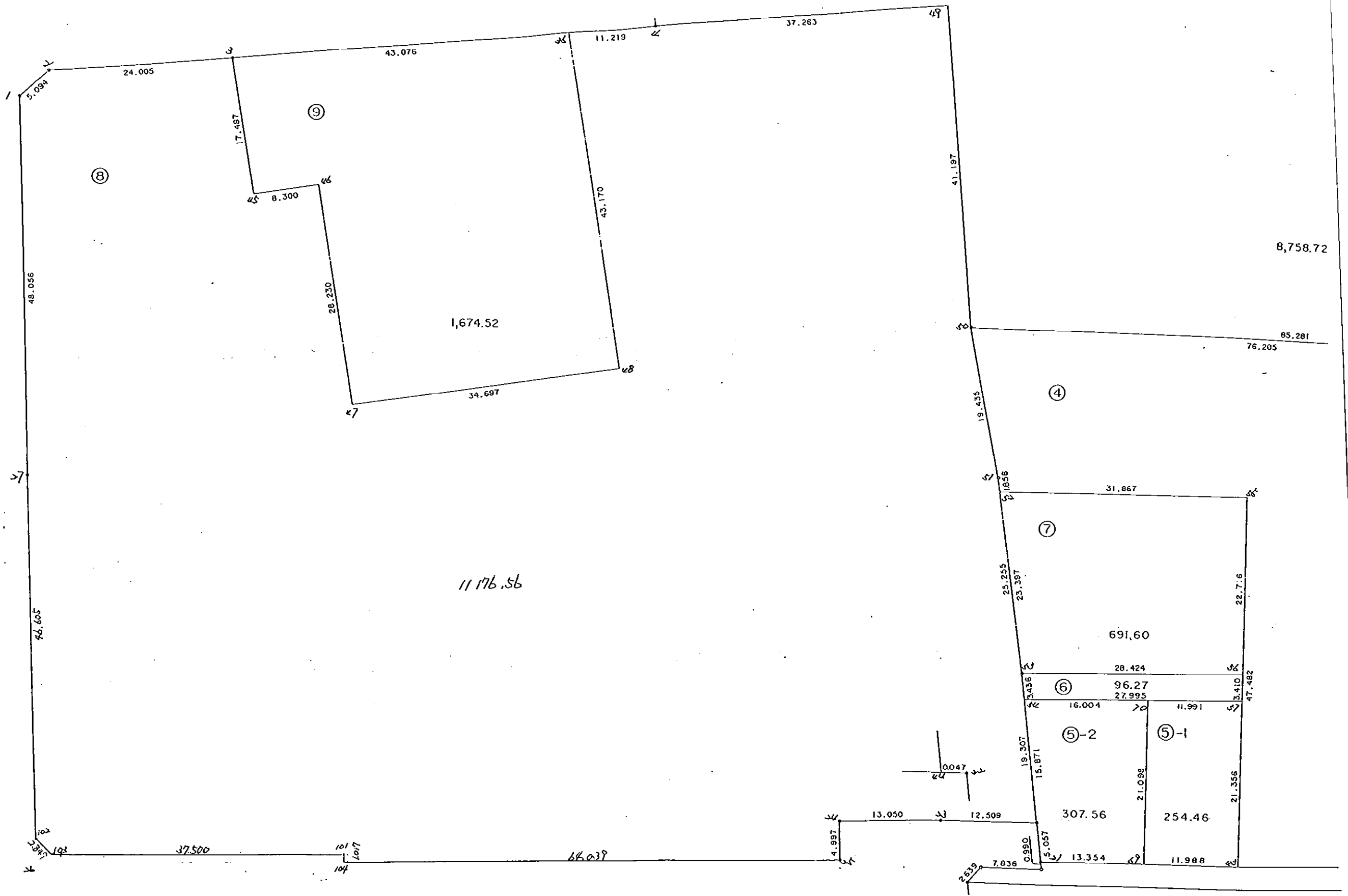
点 名	X	Y	(X-X0)*(YN-1-Y0)	(XN-1-X0)*(Y-Y0)
X0·Y0	- 149400.000	- 39700.000		
12-1-28	- 149446.909	- 39707.148		
12-1-68	- 149446.761	- 39704.128	+ 334.247628	+ 193.640352
12-1-66	- 149480.818	- 39702.532	+ 333.616704	+ 118.398852
12-1-63	- 149481.773	- 39723.430	+ 207.049236	+ 1893.565740
12-1-62	- 149447.102	- 39714.673	+ 1103.599860	+ 1199.855229
12-1-65	- 149447.675	- 39707.341	+ 699.535275	+ 345.775782
12-1-28	- 149446.909	- 39707.148	+ 344.358969	+ 340.780900
			+ 3022.407672	+ 4092.016855
		倍面積	= 1069.609183	
		面積	= 534.804591	

テシメイ	X	DX	DND.1	Y	DY	DY * DND.1	高ヨウカク	付リ
12-1-28	- 149446.999			- 39707.148				
12-1-11	- 149445.390	- 1.019	- 1.019	- 39706.876	- 0.272	+ 0.277168	14-56-43	1.055
12-1-12	- 149442.914	- 2.976	- 5.014	- 39645.844	- 61.032	+ 306.014448	87-12-30	61.105
12-1-13	- 149445.750	+ 2.836	- 5.154	- 39642.773	- 3.071	+ 15.827934	132-43-18	4.180
12-1-14	- 149469.354	+ 23.604	+ 21.286	- 39642.094	- 0.679	- 14.453194	178-21- 8	23.614
K048	- 149484.969	+ 15.615	+ 60.505	- 39641.545	- 0.549	- 33.217245	177-59-11	15.625
12-1-32	- 149485.002	+ 0.033	+ 76.153	- 39642.603	+ 1.058	+ 80.569874	268-12-48	1.059
12-1-31	- 149469.359	- 15.643	+ 60.543	- 39643.092	+ 0.489	+ 29.605527	358-12-34	15.651
12-1-30	- 149446.184	- 23.175	+ 21.725	- 39643.755	+ 0.663	+ 14.403675	358-21-41	23.184
12-1-29	- 149443.919	- 2.265	- 3.715	- 39646.201	+ 2.446	- 9.086890	312-47-59	3.334
12-1-28	- 149446.909	+ 2.990	- 2.990	- 39707.148	+ 60.947	- 182.231530	267-11-29	61.020
		+ 45.078			+ 65.603	+ 446.698626		
		- 45.078			- 65.603	- 238.988859		
						+ 207.709767		
				メンピキ	=	103.854883		

* * * * * 各 筆 面 積 計 算 書 * * * * *

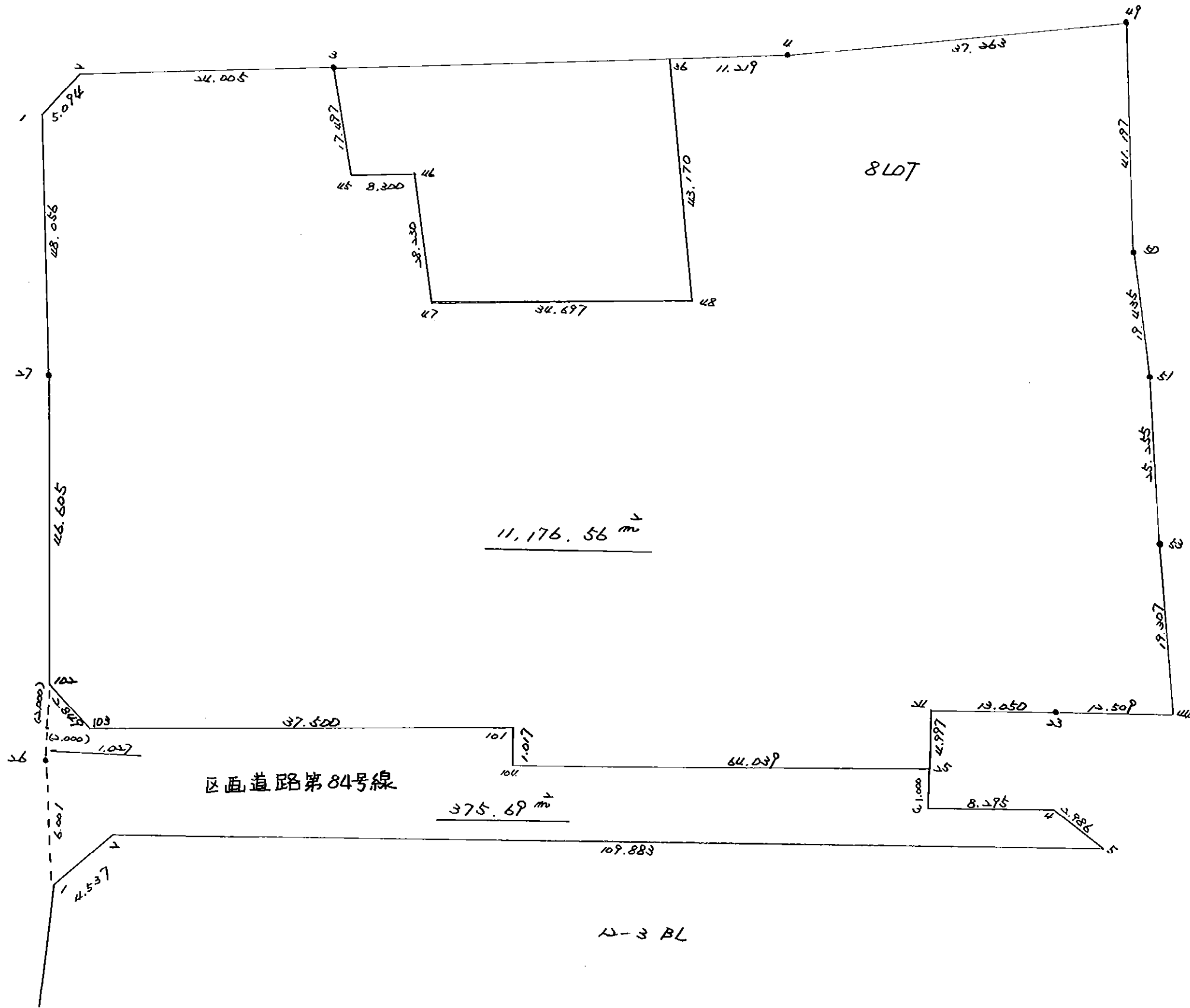
ス イ ロ

点 名	X	Y	(X-X0)*(YN-1-Y0)	(XN-1-X0)*(Y-Y0)
X0・Y0	- 149400.000	- 39600.000		
12-1-11	- 149445.890	- 39706.876		
12-1-12	- 149442.914	- 39645.844	+ 4586.476664	+ 2103.781160
12-1-13	- 149445.750	- 39642.773	+ 2097.363000	+ 1835.560522
12-1-14	- 149469.354	- 39642.094	+ 2966.478642	+ 1925.800500
12-1-15	- 149505.381	- 39640.828	+ 4435.907814	+ 2831.585112
12-1-16	- 149540.115	- 39639.641	+ 5720.615220	+ 4177.408221
12-1-17	- 149598.458	- 39637.718	+ 7867.073578	+ 5284.857570
12-2-5	- 149603.404	- 39638.400	+ 7671.992072	+ 7620.787200
12-2-4	- 149610.102	- 39699.269	+ 8067.916800	+ 20191.711676
12-2-1	- 149608.671	- 39822.311	+ 20714.561499	+ 46707.985722
12-2-2	- 149606.687	- 39820.571	+ 45948.793657	+ 46026.771141
12-2-3	- 149606.779	- 39812.736	+ 45609.450809	+ 43969.765632
12-1-21	- 149605.796	- 39812.851	+ 43780.217856	+ 44013.116929
12-1-20	- 149607.118	- 39699.472	+ 44085.273418	+ 20470.939712
12-1-19	- 149600.735	- 39641.640	+ 19967.511920	+ 8624.393520
12-1-18	- 149598.520	- 39639.718	+ 8266.372800	+ 7972.792730
12-1-35	- 149540.149	- 39641.640	+ 5566.437982	+ 8266.372800
12-1-34	- 149505.490	- 39642.818	+ 4392.603600	+ 6000.899882
12-1-33	- 149491.002	- 39643.353	+ 3896.523636	+ 4573.307970
12-1-32	- 149485.002	- 39642.603	+ 3685.091706	+ 3876.958206
12-1-31	- 149469.359	- 39643.092	+ 2954.901477	+ 3662.906184
12-1-30	- 149446.184	- 39643.755	+ 1990.160928	+ 3034.803045
12-1-29	- 149443.919	- 39646.201	+ 1921.675845	+ 2133.746984
12-1-28	- 149446.909	- 39707.148	+ 2167.242709	+ 4705.833012
12-1-11	- 149445.890	- 39706.876	+ 4917.021720	+ 5013.446284
			+303277.665352	+305025.531714
		倍面積	= 1747.866362	
		面積	= 873.933181	



12-1 BL
(8LOT 变更)

H5, 2, 10



* * * * 8 LOT

面積計算書 * * * * NO 1

点名	X	DX	DMD.1	Y	DY	DMD.2	DX * DMD.2	DY * DMD.1
12-1-44	- 149600.773			- 39813.485				
12-1-23	- 149600.653	- 0.120	- 0.120	- 39825.993	+ 12.508	+ 12.508	- 1.500960	- 1.500960
12-1-24	- 149600.923	+ 0.270	+ 0.030	- 39839.040	+ 13.047	+ 38.063	+ 10.277010	+ 0.391410
12-1-25	- 149605.918	+ 4.995	+ 5.295	- 39838.896	- 0.144	+ 50.966	+ 254.575170	- 0.762480
12-1-104	- 149607.354	+ 1.436	+ 11.726	- 39902.919	+ 64.023	+ 114.845	+ 164.917420	+ 750.733698
12-1-101	- 149606.338	- 1.016	+ 12.146	- 39902.941	+ 0.022	+ 178.890	- 181.752240	+ 0.267212
12-1-103	- 149607.169	+ 0.831	+ 11.961	- 39940.431	+ 37.490	+ 216.402	+ 179.830062	+ 448.417890
12-1-102	- 149605.214	- 1.955	+ 10.837	- 39942.503	+ 2.072	+ 255.964	- 500.409620	+ 22.454264
12-1-27	- 149558.640	- 46.574	- 37.692	- 39944.185	+ 1.682	+ 259.718	- 12096.106132	- 63.397944
12-1-1	- 149510.610	- 48.030	- 132.296	- 39945.754	+ 1.569	+ 262.969	- 12630.401070	- 207.572424
12-1-2	- 149507.234	- 3.376	- 183.702	- 39941.939	- 3.815	+ 260.723	- 880.200848	+ 700.823130
12-1-3	- 149505.078	- 2.156	- 189.234	- 39918.031	- 23.908	+ 233.000	- 502.348000	+ 4524.206472
12-1-45	- 149522.343	+ 17.265	- 174.125	- 39915.194	- 2.837	+ 206.255	+ 3560.992575	+ 493.992625
12-1-46	- 149520.997	- 1.346	- 158.206	- 39907.004	- 8.190	+ 195.228	- 262.776888	+ 1295.707140
12-1-47	- 149548.853	+ 27.856	- 131.696	- 39902.427	- 4.577	+ 182.461	+ 5082.633616	+ 602.772592
12-1-48	- 149543.632	- 5.221	- 109.061	- 39868.125	- 34.302	+ 143.582	- 749.641622	+ 3741.010422
12-1-36	- 149501.037	- 42.595	- 156.877	- 39875.145	+ 7.020	+ 116.300	- 4953.798500	- 1101.276540
12-1-4	- 149499.984	- 1.053	- 200.525	- 39863.975	- 11.170	+ 112.150	- 118.093950	+ 2239.864250
12-1-49	- 149496.525	- 3.459	- 205.037	- 39826.873	- 37.102	+ 63.878	- 220.954002	+ 7607.282774
12-1-50	- 149537.561	+ 41.036	- 167.460	- 39823.233	- 3.640	+ 23.136	+ 949.408896	+ 609.554400
12-1-51	- 149556.595	+ 19.034	- 107.390	- 39819.303	- 3.930	+ 15.566	+ 296.283244	+ 422.042700
12-1-53	- 149581.600	+ 25.005	- 63.351	- 39815.759	- 3.544	+ 8.092	+ 202.340460	+ 224.515944
12-1-44	- 149600.773	+ 19.173	- 19.173	- 39813.485	- 2.274	+ 2.274	+ 43.599402	+ 43.599402
		+ 156.901			+ 139.433		+ 10744.857855	+ 23727.636325
		- 156.901			- 139.433		- 33097.983832	- 1374.510348
							- 22353.125977	+ 22353.125977
						面積 =	11176.562988	

* * * * * 1990 84 199

面積計算書

* * * * * NO 1

点 名	X	DX	DMD.1	Y	DY	DMD.2	DX * DMD.2	DY * DMD.1
12-1-102	- 149605.214			- 39942.503				
12-1-103	- 149607.169	+ 1.955	+ 1.955	- 39940.431	- 2.072	- 2.072	- 4.050760	- 4.050760
12-1-101	- 149606.338	- 0.831	+ 3.079	- 39902.941	- 37.490	- 41.634	+ 34.597854	- 115.431710
12-1-104	- 149607.354	+ 1.016	+ 3.264	- 39902.919	- 0.022	- 79.146	- 80.412336	- 0.071808
12-1-25	- 149605.918	- 1.436	+ 2.844	- 39838.896	- 64.023	- 143.191	+ 205.622276	- 182.081412
12-3-3	- 149606.918	+ 1.000	+ 2.408	- 39838.867	- 0.029	- 207.243	- 207.243000	- 0.069832
12-3-4	- 149606.726	- 0.192	+ 3.216	- 39830.574	- 8.293	- 215.565	+ 41.388480	- 26.670288
12-3-5	- 149608.688	+ 1.962	+ 4.986	- 39828.323	- 2.251	- 226.109	- 443.625858	- 11.223486
12-3-2	- 149611.120	+ 2.432	+ 9.380	- 39938.179	+ 109.856	- 118.504	- 288.201728	+ 1030.449280
12-3-1	- 149614.178	+ 3.058	+ 14.870	- 39941.530	+ 3.351	- 5.297	- 16.198226	+ 49.829370
12-1-26	- 149608.240	- 5.938	+ 11.990	- 39942.394	+ 0.864	- 1.082	+ 6.424916	+ 10.359360
12-1-102	- 149605.214	- 3.026	+ 3.026	- 39942.503	+ 0.109	- 0.109	+ 0.329834	+ 0.329834
		+ 11.423			+ 114.180		+ 288.363360	+ 1090.967844
		- 11.423			- 114.180		- 1039.731908	- 339.599296
							- 751.368548	+ 751.368548

面積 = ~~375.604274~~
375.69