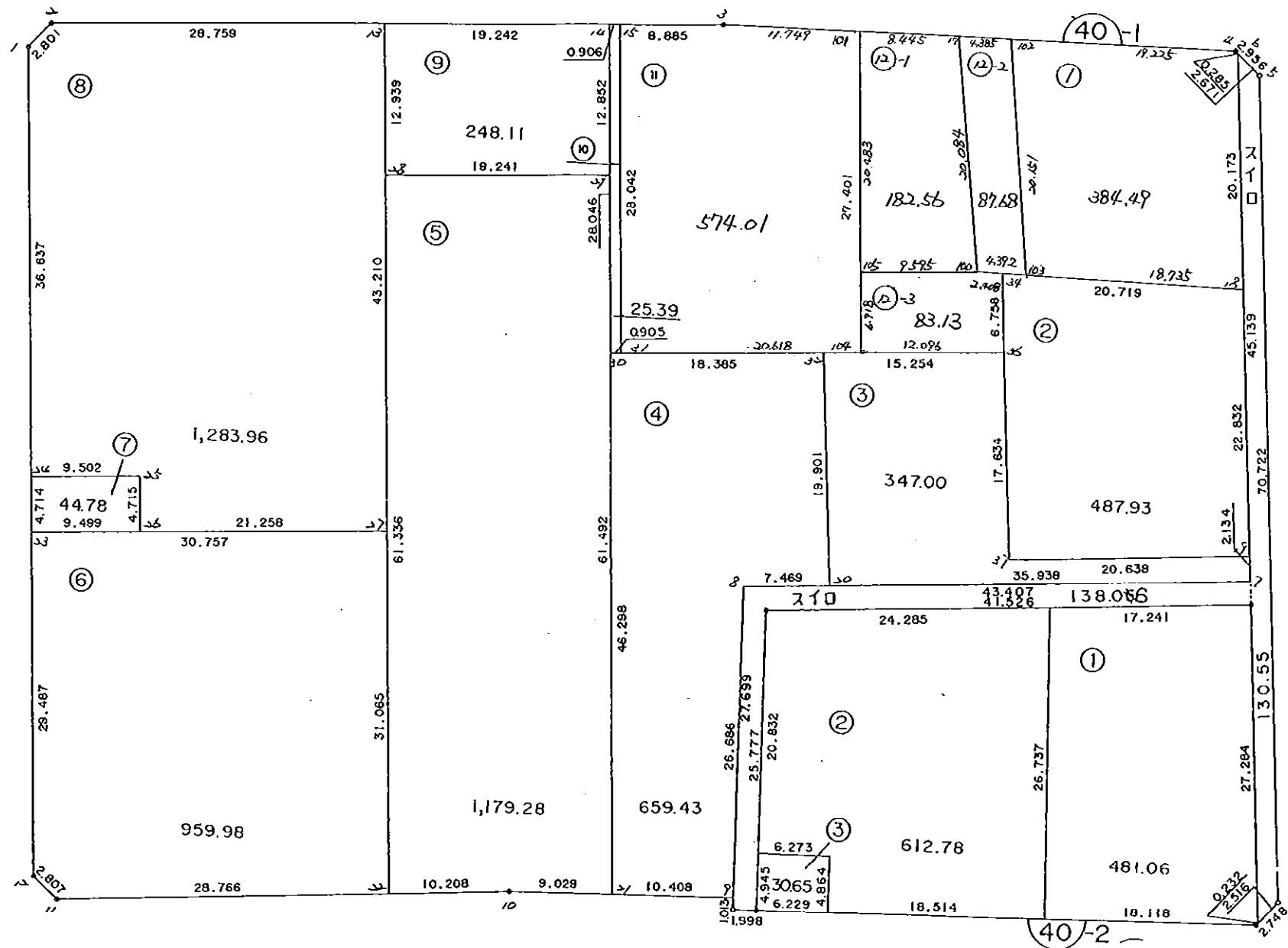


This area contains faint, illegible text, likely bleed-through from the reverse side of the page. The text is mostly horizontal and appears to be a list or a set of notes, but the characters are too light to be transcribed accurately.



カクヒツ . カクヒツ	カクヒツ メンセキ	入ミキリ メンセキ
-------------	-----------	-----------

40-1 BLOCK	6816.40	
------------	---------	--

1 LOT	393.19	
2 LOT	487.93	
3 LOT	347.00	
4 LOT	659.43	
5 LOT	1179.28	
6 LOT	959.98	
7 LOT	44.78	
8 LOT	1283.96	
9 LOT	248.11	
10 LOT	25.39	
11 LOT	562.87	
12 LOT	355.81	
入イロ	<del>268.68</del>	

128 4506  
130.55

ショウケイ =	<del>6816.34</del> 6816.33	0.00
---------	-------------------------------	------

\*\*\*\*\* カクヒツ メンセキ ケイサン \*\*\*\*\*

40-1 BLOCK

テコメイ	X	Y	(X-X0)*(YN-1-Y0)	(XN-1-X0)*(Y-Y0)
X0.Y0	- 149800.000	- 39900.000		
40-1-1	- 149866.266	- 40043.483		
40-1-2	- 149864.184	- 40041.609	+ 9209.312872	+ 9383.861994
40-1-3	- 149861.084	- 39983.900	+ 8650.044156	+ 5385.037600
40-1-4	- 149860.795	- 39940.097	+ 5100.700500	+ 2449.285148
40-1-5	- 149862.807	- 39937.931	+ 2518.372279	+ 2306.015145
40-2-3	- 149933.300	- 39932.240	+ 5056.202300	+ 2024.897680
40-2-4	- 149935.166	- 39933.928	+ 4357.751840	+ 4522.602400
40-2-2	- 149907.967	- 39936.079	+ 3663.104376	+ 4876.654114
40-2-1	- 149910.743	- 39977.512	+ 3995.496697	+ 8368.738104
40-2-6	- 149936.513	- 39976.929	+ 10581.395656	+ 8519.348247
40-2-7	- 149936.568	- 39978.926	+ 10506.039672	+ 10774.425038
40-1-9	- 149935.555	- 39978.949	+ 10698.813930	+ 10781.907032
40-1-10	- 149936.064	- 39998.379	+ 10742.116736	+ 13335.765345
40-1-11	- 149938.836	- 40037.254	+ 13658.546844	+ 18675.328256
40-1-12	- 149936.984	- 40039.363	+ 18801.601936	+ 19348.601468
40-1-1	- 149866.266	- 40043.483	+ 9235.028558	+ 19654.875272
			+126774.528352	+140407.342843
	ハイ	メンセキ	= 13632.814491	
	メンセキ	=	6816.407245	

1 LOT

テコメイ	X	Y	(X-X0)*(YN-1-Y0)	(XN-1-X0)*(Y-Y0)
X0.Y0	- 149800.000	- 39900.000		
40-1-17	- 149860.923	- 39959.434		
40-1-4	- 149860.795	- 39940.097	+ 3613.290030	+ 2442.829531
40-1-6	- 149860.989	- 39939.888	+ 2445.475933	+ 2424.990960
40-1-18	- 149881.096	- 39938.255	+ 3234.757248	+ 2333.134195
40-1-35	- 149880.930	- 39957.748	+ 3095.977150	+ 4683.131808
40-1-17	- 149860.923	- 39959.434	+ 3518.181404	+ 4809.993620
			+ 15907.681765	+ 16694.080114
	ハイ	メンセキ	= 786.398349	
	メンセキ	=	393.199174	

2 LOT

テコメイ	X	Y	(X-X0)*(YN-1-Y0)	(XN-1-X0)*(Y-Y0)
X0.Y0	- 149800.000	- 39900.000		
40-1-18	- 149881.096	- 39938.255		
40-1-19	- 149903.853	- 39936.407	+ 3972.896515	+ 2952.462072
40-1-37	- 149905.232	- 39956.999	+ 3831.181424	+ 5919.517147
40-1-36	- 149887.660	- 39958.482	+ 4996.532340	+ 6154.177824
40-1-34	- 149880.920	- 39958.973	+ 4732.363440	+ 5169.573180

\*\*\*\*\* カクヒツ メンセキ ケイリン \*\*\*\*\*

デジメイ	X	Y	(X-X0)*(YN-1-Y0)	(XN-1-X0)*(Y-Y0)
40-1-18	- 149881.096	- 39938.255	+ 4782.474408	+ 3095.594600
			+ 22315.448127	+ 23291.324823
		ハイ メンセキ =	975.876696	
		メンセキ =	487.938348	

3 LOT

デジメイ	X	Y	(X-X0)*(YN-1-Y0)	(XN-1-X0)*(Y-Y0)
X0.Y0	- 149800.000	- 39900.000		
40-1-7	- 149905.980	- 39936.234		
40-1-20	- 149908.378	- 39972.092	+ 3926.968452	+ 7640.310160
40-1-32	- 149888.543	- 39973.710	+ 6383.241956	+ 7988.542380
40-1-36	- 149887.660	- 39958.482	+ 6461.418600	+ 5178.171726
40-1-37	- 149905.232	- 39956.999	+ 6154.177824	+ 4996.532340
40-1-19	- 149903.853	- 39936.407	+ 5919.517147	+ 3831.181424
40-1-7	- 149905.980	- 39936.234	+ 3858.413860	+ 3763.009602
			+ 32703.737839	+ 33397.747632
		ハイ メンセキ =	694.009793	
		メンセキ =	347.004896	

4 LOT

デジメイ	X	Y	(X-X0)*(YN-1-Y0)	(XN-1-X0)*(Y-Y0)
X0.Y0	- 149800.000	- 39900.000		
40-1-20	- 149908.378	- 39972.092		
40-1-8	- 149908.876	- 39979.544	+ 7849.088592	+ 8620.819632
40-1-9	- 149935.555	- 39978.949	+ 10782.586920	+ 8595.651324
40-1-21	- 149935.828	- 39989.353	+ 10723.484772	+ 12112.245915
40-1-30	- 149889.608	- 39992.045	+ 8006.743624	+ 12502.288260
40-1-32	- 149888.543	- 39973.710	+ 8149.940435	+ 6605.005680
40-1-20	- 149908.378	- 39972.092	+ 7988.542380	+ 6383.241956
			+ 53500.386723	+ 54819.252767
		ハイ メンセキ =	1318.866044	
		メンセキ =	659.433022	

5 LOT

デジメイ	X	Y	(X-X0)*(YN-1-Y0)	(XN-1-X0)*(Y-Y0)
X0.Y0	- 149800.000	- 39900.000		
40-1-21	- 149935.828	- 39989.353		
40-1-10	- 149936.064	- 39998.379	+ 12157.726592	+ 13362.622812
40-1-22	- 149936.790	- 40008.561	+ 13457.263410	+ 14771.243904
40-1-28	- 149875.558	- 40012.137	+ 8202.652038	+ 15339.220230
40-1-29	- 149874.440	- 39992.929	+ 8347.478280	+ 7021.529382
40-1-21	- 149935.828	- 39989.353	+ 12622.360212	+ 6651.437320

\*\*\*\*\* カクヒツ メンセキ ケイザン \*\*\*\*\*

テンメイ	X	Y	(X-X0)*(YN-1-Y0)	(XN-1-X0)*(Y-Y0)
			+ 54787.480532	+ 57146.053648
		ハイ	= 2358.573116	
		メンセキ	= 1179.286558	

6 LOT

テンメイ	X	Y	(X-X0)*(YN-1-Y0)	(XN-1-X0)*(Y-Y0)
X0.Y0	- 149900.000	- 40000.000		
40-1-22	- 149936.790	- 40008.561		
40-1-11	- 149938.836	- 40037.254	+ 332.474996	+ 1370.574660
40-1-12	- 149936.984	- 40039.363	+ 1377.801936	+ 1528.701468
40-1-23	- 149907.547	- 40041.078	+ 297.072561	+ 1519.228752
40-1-27	- 149905.778	- 40010.372	+ 237.348684	+ 78.277484
40-1-22	- 149936.790	- 40008.561	+ 381.585880	+ 49.465458
			+ 2626.284057	+ 4546.247822
		ハイ	= 1919.963765	
		メンセキ	= 959.981882	

7 LOT

テンメイ	X	Y	(X-X0)*(YN-1-Y0)	(XN-1-X0)*(Y-Y0)
X0.Y0	- 149900.000	- 40000.000		
40-1-23	- 149907.547	- 40041.078		
40-1-24	- 149902.841	- 40041.352	+ 116.702598	+ 312.083544
40-1-25	- 149902.294	- 40031.866	+ 94.861488	+ 90.531306
40-1-26	- 149907.001	- 40031.595	+ 223.093866	+ 72.478930
40-1-23	- 149907.547	- 40041.078	+ 238.447465	+ 287.587078
			+ 673.105417	+ 762.680858
		ハイ	= 89.575441	
		メンセキ	= 44.787720	

8 LOT

テンメイ	X	Y	(X-X0)*(YN-1-Y0)	(XN-1-X0)*(Y-Y0)
X0.Y0	- 149800.000	- 40000.000		
40-1-24	- 149902.841	- 40041.352		
40-1-1	- 149866.266	- 40043.483	+ 2740.231632	+ 4471.835203
40-1-2	- 149864.184	- 40041.609	+ 2790.912872	+ 2757.261994
40-1-13	- 149862.641	- 40012.891	+ 2606.429369	+ 827.395944
40-1-27	- 149905.778	- 40010.372	+ 1363.584198	+ 649.712452
40-1-26	- 149907.001	- 40031.595	+ 1109.814372	+ 3342.055910
40-1-25	- 149902.294	- 40031.866	+ 3231.978930	+ 3409.693866
40-1-24	- 149902.841	- 40041.352	+ 3277.131306	+ 4230.061488
			+ 17120.082679	+ 19688.016857
		ハイ	= 2567.934178	
		メンセキ	= 1283.967089	

\*\*\*\*\* カクヒツ メンセキ ケイリョウ \*\*\*\*\*

9 LOT

テコメイ	X	Y	(X-X0)*(YN-1-Y0)	(XN-1-X0)*(Y-Y0)
X0.Y0	- 149800.000	- 39900.000		
40-1-13	- 149862.641	- 40012.891		
40-1-14	- 149861.610	- 39993.677	+ 6955.214510	+ 5868.020957
40-1-29	- 149874.440	- 39992.929	+ 6973.315880	+ 5725.355690
40-1-28	- 149875.558	- 40012.137	+ 7021.529382	+ 8347.478280
40-1-13	- 149862.641	- 40012.891	+ 7024.373817	+ 8529.818178
			+ 27974.433589	+ 28470.673105
	ハイ	メンセキ	= 496.239516	
	メンセキ		= 248.119758	

10 LOT

テコメイ	X	Y	(X-X0)*(YN-1-Y0)	(XN-1-X0)*(Y-Y0)
X0.Y0	- 149800.000	- 39900.000		
40-1-14	- 149861.610	- 39993.677		
40-1-15	- 149861.561	- 39992.772	+ 5766.849797	+ 5715.682920
40-1-31	- 149889.556	- 39991.142	+ 8308.289232	+ 5610.792662
40-1-30	- 149889.608	- 39992.045	+ 8167.052336	+ 8243.182020
40-1-14	- 149861.610	- 39993.677	+ 5670.892450	+ 8394.208616
			+ 27913.083815	+ 27963.866218
	ハイ	メンセキ	= 50.782403	
	メンセキ		= 25.391201	

11 LOT

テコメイ	X	Y	(X-X0)*(YN-1-Y0)	(XN-1-X0)*(Y-Y0)
X0.Y0	- 149800.000	- 39900.000		
40-1-15	- 149861.561	- 39992.772		
40-1-3	- 149861.084	- 39983.900	+ 5666.884848	+ 5164.967900
40-1-16	- 149861.009	- 39972.559	+ 5118.655100	+ 4432.193956
40-1-33	- 149888.384	- 39970.964	+ 6413.054656	+ 4329.442676
40-1-31	- 149889.556	- 39991.142	+ 6355.251984	+ 8055.494528
40-1-15	- 149861.561	- 39992.772	+ 5610.792662	+ 8308.289232
			+ 29164.639250	+ 30290.388292
	ハイ	メンセキ	= 1125.749042	
	メンセキ		= 562.874521	

12 LOT

テコメイ	X	Y	(X-X0)*(YN-1-Y0)	(XN-1-X0)*(Y-Y0)
X0.Y0	- 149800.000	- 39900.000		
40-1-16	- 149861.009	- 39972.559		
40-1-17	- 149860.923	- 39959.434	+ 4420.511957	+ 3626.008906

\*\*\*\*\* カクヒツ メンセキ ケイサン \*\*\*\*\*

テシメイ	X	Y	(X-X0)*(YN-1-Y0)	(XN-1-X0)*(Y-Y0)
40-1-35	- 149880.930	- 39957.748	+ 4809.993620	+ 3518.181404
40-1-34	- 149880.920	- 39958.973	+ 4672.968160	+ 4772.684890
40-1-36	- 149887.660	- 39958.482	+ 5169.573180	+ 4732.363440
40-1-33	- 149888.384	- 39970.964	+ 5168.873088	+ 6220.704240
40-1-16	- 149861.009	- 39972.559	+ 4329.442676	+ 6413.054656
			+ 28571.362681	+ 29282.997536
		ハイ	= 711.634855	
		メンセキ	= 355.817427	

λ イ ロ

テシメイ	X	Y	(X-X0)*(YN-1-Y0)	(XN-1-X0)*(Y-Y0)
X0.Y0	- 149800.000	- 39900.000		
40-1-8	- 149908.876	- 39979.544		
40-1-7	- 149905.980	- 39936.234	+ 8430.073120	+ 3945.012984
40-1-6	- 149860.989	- 39939.888	+ 2209.875426	+ 4227.330240
40-1-5	- 149862.807	- 39937.931	+ 2505.245616	+ 2313.373759
40-2-3	- 149933.300	- 39932.240	+ 5056.202300	+ 2024.897680
40-2-4	- 149935.166	- 39933.928	+ 4357.751840	+ 4522.602400
40-2-2	- 149907.967	- 39936.079	+ 3663.104376	+ 4876.654114
40-2-1	- 149910.743	- 39977.512	+ 3995.496697	+ 8368.738104
40-2-6	- 149936.513	- 39976.929	+ 10581.395656	+ 8519.348247
40-2-7	- 149936.568	- 39978.926	+ 10506.039672	+ 10774.425038
40-1-8	- 149908.876	- 39979.544	+ 8593.147176	+ 10863.164992
			+ 59898.331879	+ 60435.547558
		ハイ	= 537.215679	
		メンセキ	= 268.607839	



\* \* \* \* \* 210 1860

## 面積計算書

\* \* \* \* \* NO 1

点名	X	DX	DMD.1	Y	DY	DMD.2	DX * DMD.2	DY * DMD.1
40-1-8	- 149908.876			- 39979.544				
40-1-7	- 149905.980	- 2.896	- 2.896	- 39936.234	- 43.310	- 43.310	+ 125.425760	+ 125.425760
40-2-2	- 149907.967	+ 1.987	- 3.805	- 39936.079	- 0.155	- 86.775	- 172.421925	+ 0.589775
40-2-1	- 149910.743	+ 2.776	+ 0.958	- 39977.512	+ 41.433	- 45.497	- 126.299672	+ 39.692814
40-2-6	- 149936.513	+ 25.770	+ 29.504	- 39976.929	- 0.583	- 4.647	- 119.753190	- 17.200832
40-2-7	- 149936.568	+ 0.055	+ 55.329	- 39978.926	+ 1.997	- 3.233	- 0.177815	+ 110.492013
40-1-9	- 149935.555	- 1.013	+ 54.371	- 39978.949	+ 0.023	- 1.213	+ 1.228769	+ 1.250533
40-1-8	- 149908.876	- 26.679	+ 26.679	- 39979.544	+ 0.595	- 0.595	+ 15.874005	+ 15.874005
		+ 30.588			+ 44.048		+ 142.528534	+ 293.324900
		- 30.588			- 44.048		- 418.652602	- 17.200832
							- 276.124068	+ 276.124068

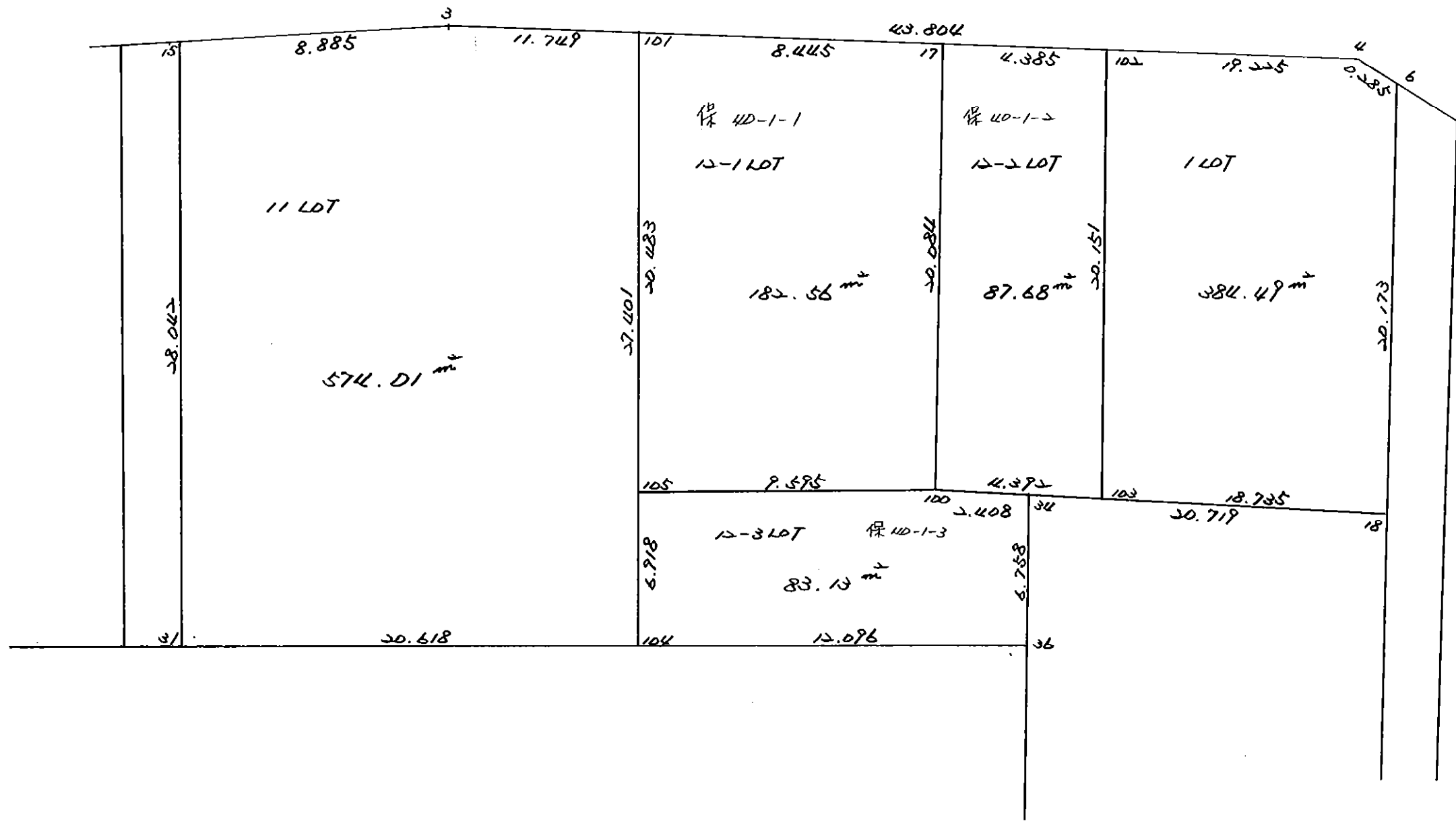
面積 = 138.062034

点名	X	DX	DMD.1	Y	DY	DMD.2	方向角	距離	DX*DMD.2	DY*DMD.1
40-1-6	- 149860.989		-	39939.888						
40-1-5	- 149862.807	+ 1.818	+ 1.818	- 39937.931	- 1.957	1.957	132-53-29	2.671	- 3.557826	- 3.557826
40-2-3	- 149933.300	+ 70.493	+ 74.129	- 39932.240	- 5.691	9.605	175-23-4	70.722	- 677.085265	- 421.868139
40-2-4	- 149935.166	+ 1.866	+ 146.488	- 39933.928	+ 1.688	13.608	222-8-21	2.516	+ 25.392528	+ 247.271744
40-2-2	- 149907.967	- 27.199	+ 121.155	- 39936.079	+ 2.151	9.769	355-28-42	27.284	+ 265.707031	+ 260.604405
40-1-7	- 149905.980	- 1.987	+ 91.969	- 39936.234	+ 0.155	7.463	355-32-22	1.993	+ 14.828981	+ 14.255195
40-1-6	- 149860.989	- 44.991	+ 44.991	- 39939.888	+ 3.654	3.654	355-21-25	45.139	+ 164.397114	+ 164.397114
		+ 74.177			+ 7.648				+ 444.933126	+ 686.528458
		- 74.177			- 7.648				- 706.035619	- 425.425965
									- 261.102493	+ 261.102493

面積 = 130.551246

40-1 BL

HK, 12, 2



\* \* \* \* 1 LOT

面積計算書

\* \* \* \* NO 1

点名	X	DX	DMD.1	Y	DY	DMD.2	DX * DMD.2	DY * DMD.1
40-1-102	- 149860.922			- 39959.322				
40-1-4	- 149860.795	- 0.127	- 0.127	- 39940.097	- 19.225	- 19.225	+ 2.441575	+ 2.441575
40-1-6	- 149860.989	+ 0.194	- 0.060	- 39939.888	- 0.209	- 38.659	+ 7.499846	+ 0.012540
40-1-18	- 149881.096	+ 20.107	+ 20.241	- 39938.255	- 1.633	- 40.501	- 814.353607	- 33.053553
40-1-103	- 149880.937	- 0.159	+ 40.189	- 39956.989	+ 18.734	- 23.400	+ 3.720600	+ 752.900726
40-1-102	- 149860.922	- 20.015	+ 20.015	- 39959.322	+ 2.333	- 2.333	+ 46.694995	+ 46.694995
		+ 20.301			+ 21.067		+ 52.857170	+ 802.049836
		- 20.301			- 21.067		- 821.853453	- 33.053553
							- 768.996283	+ 768.996283
						面積 =	384.498141	



\* \* \* \* 12-1 LOT

面積計算書

\* \* \* \* NO 1

点名	X	DX	DMD.1	Y	DY	DMD.2	DX * DMD.2	DY * DMD.1
40-1-101	- 149861.007			- 39972.152				
40-1-17	- 149860.951	- 0.056	- 0.056	- 39963.707	- 8.445	- 8.445	+ 0.472920	+ 0.472920
40-1-100	- 149880.900	+ 19.949	+ 19.837	- 39961.381	- 2.326	- 19.216	- 383.339984	- 46.140862
40-1-105	- 149881.456	+ 0.556	+ 40.342	- 39970.960	+ 9.579	- 11.963	- 6.651428	+ 386.436018
40-1-101	- 149861.007	- 20.449	+ 20.449	- 39972.152	+ 1.192	- 1.192	+ 24.375208	+ 24.375208
		+ 20.505			+ 10.771		+ 24.848128	+ 411.284146
		- 20.505			- 10.771		- 389.991412	- 46.140862
							- 365.143284	+ 365.143284

面積 = ~~182.571642~~  
182.56

\* \* \* \* 12-2 LOT

面積計算書

\* \* \* \* NO 1

点名	X	DX	DMD.1	Y	DY	DMD.2	DX * DMD.2	DY * DMD.1
40-1-17	- 149860.951			- 39963.707				
40-1-102	- 149860.922	- 0.029	- 0.029	- 39959.322	- 4.385	- 4.385	+ 0.127165	+ 0.127165
40-1-103	- 149880.937	+ 20.015	+ 19.957	- 39956.989	- 2.333	- 11.103	- 222.226545	- 46.559681
40-1-100	- 149880.900	- 0.037	+ 39.935	- 39961.381	+ 4.392	- 9.044	+ 0.334628	+ 175.394520
40-1-17	- 149860.951	- 19.949	+ 19.949	- 39963.707	+ 2.326	- 2.326	+ 46.401374	+ 46.401374
		+ 20.015			+ 6.718		+ 46.863167	+ 221.923059
		- 20.015			- 6.718		- 222.226545	- 46.559681
							- 175.363378	+ 175.363378
						面積 =	87.681689	

\* \* \* \* 12-3 LOT

面 積 計 算 書

\* \* \* \* NO 1

点 名	X	DX	DMD.1	Y	DY	DMD.2	DX * DMD.2	DY * DMD.1
40-1-34	- 149880.920			- 39958.973				
40-1-36	- 149887.660	+ 6.740	+ 6.740	- 39958.482	- 0.491	- 0.491	- 3.309340	- 3.309340
40-1-104	- 149888.362	+ 0.702	+ 14.182	- 39970.558	+ 12.076	+ 11.094	+ 7.787988	+ 171.261832
40-1-105	- 149881.456	- 6.906	+ 7.978	- 39970.960	+ 0.402	+ 23.572	- 162.788232	+ 3.207156
40-1-100	- 149880.900	- 0.556	+ 0.516	- 39961.381	- 9.579	+ 14.395	- 8.003620	- 4.942764
40-1-34	- 149880.920	+ 0.020	- 0.020	- 39958.973	- 2.408	+ 2.408	+ 0.048160	+ 0.048160
		+ 7.462			+ 12.478		+ 7.836148	+ 174.517148
		- 7.462			- 12.478		- 174.101192	- 8.252104
							- 166.265044	+ 166.265044
						面 積 =	83.132522	