

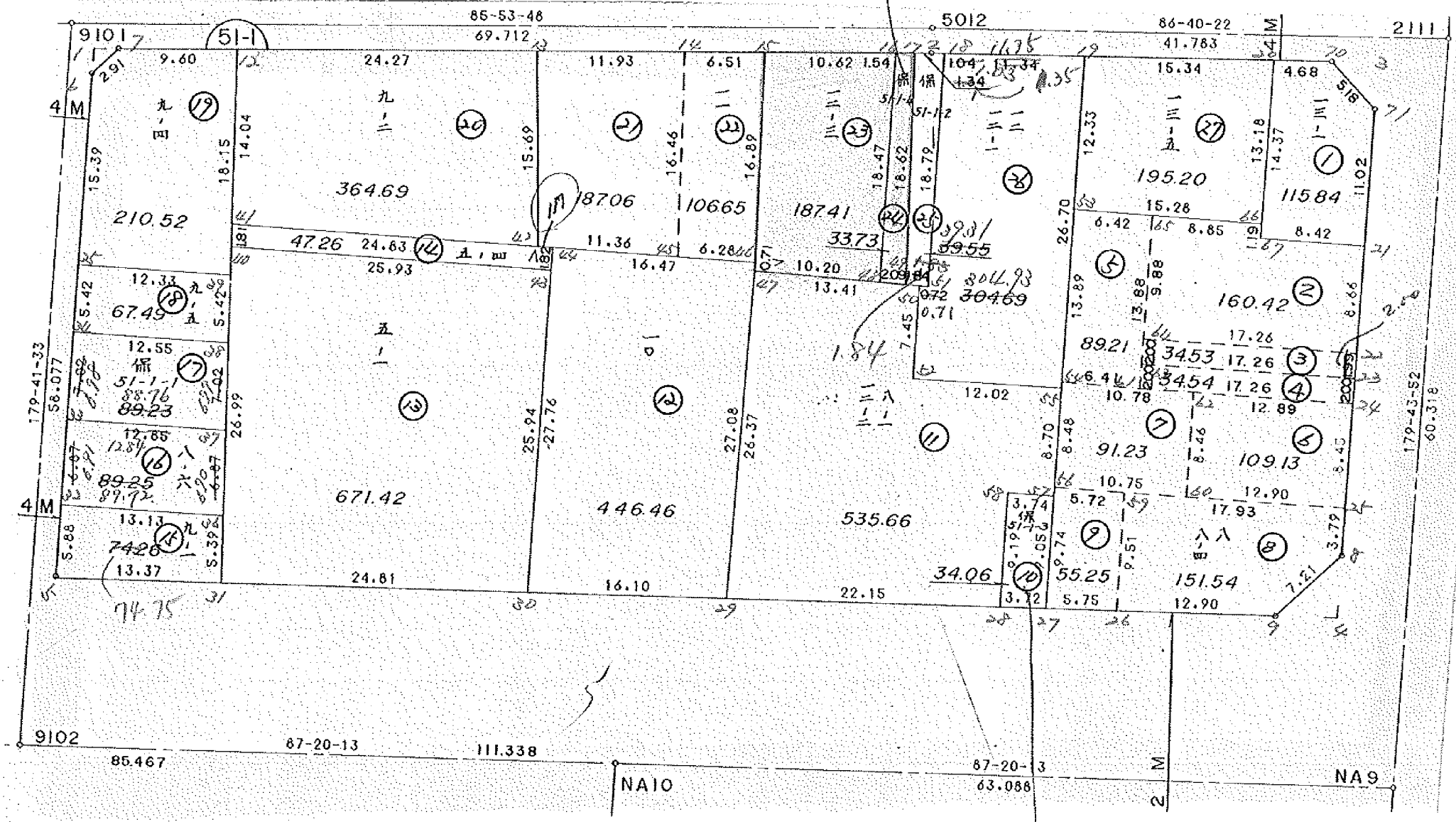
面地確定計算書

BLOCK NO. 51-1

90-1-42

調整不能

保留地變更 556.12



調整不能  
 依據地圖地籍  
 保留地台帳地籍

BLOCK . LOT KAKUHITSU MENSEKI SUMIKIRI.SUIRO MENSEKI

51-1 BLOCK 4533.969588

1 LOT	122.937581	-7090887 = 115.846694
2 LOT	160.427000	
3 LOT	34.533913	
4 LOT	34.545187	
5 LOT	89.217300	
6 LOT	109.136164	
7 LOT	91.239992	
8 LOT	151.546800	
9 LOT	55.254731	
10 LOT	34.066151	
11 LOT	535.664752	
12 LOT	446.468230	
13 LOT	671.421070	
14 LOT	47.261790	
15 LOT	74.750308	
16 LOT	<del>89.257884</del>	81.727905
17 LOT	<del>89.234472</del>	88.766107
18 LOT	67.490990	
19 LOT	210.520158	
20 LOT	364.696542	
21 LOT	187.061129	
22 LOT	106.659078	
23 LOT	187.411466	
24 LOT	33.733314	
25 LOT	<del>39.557896</del>	07.313595
26 LOT	<del>304.695939</del>	304.959156
27 LOT	195.205772	

保留地調整の為

1 入三キリ		1.995786
4 入三キリ		12.490168
3 入三キリ		7.090887
TOTAL =	4526.904422	21.576841
	<del>4533.969588</del>	<del>14.485954</del>

51-1 BLOCK

TENMEI	X	Y	(X-X0)*(YN-1-Y0)	(XN-1-X0)*(Y-Y0)
X0.Y0	- 149900.000	- 39000.000		
OS511-6	- 149914.743	- 39152.289		
OS511-7	- 149912.600	- 39150.305	+ 1918.841400	+ 2215.946615
OS511-2	- 149907.889	- 39084.647	+ 1185.756145	+ 1066.552200
OS511-3	- 149905.790	- 39048.553	+ 490.106130	+ 383.034617
OS511-8	- 149945.528	- 39048.366	+ 2210.520984	+ 280.039140
OS511-9	- 149950.760	- 39053.338	+ 2455.058160	+ 2428.372464
OS511-5	- 149955.352	- 39152.071	+ 2952.364976	+ 7719.123960
OS511-6	- 149914.743	- 39152.289	+ 2241.982753	+ 8429.500728
			+ 13454.630548	+ 22522.569724
		BAI MENSEKI =	9067.939176	
		MENSEKI =	4533.969588	

1 LOT

TENMEI	X	Y	(X-X0)*(YN-1-Y0)	(XN-1-X0)*(Y-Y0)
X0.Y0	- 149900.000	- 39000.000		
OS511-3	- 149905.790	- 39048.553		
OS511-21	- 149920.615	- 39048.483	+ 1000.920095	+ 280.716570
OS511-67	- 149920.649	- 39056.912	+ 1001.125467	+ 1173.240880
OS511-20	- 149906.280	- 39056.966	+ 357.407360	+ 1176.290934
OS511-3	- 149905.790	- 39048.553	+ 329.833140	+ 304.912840
			+ 2689.286062	+ 2935.161224
		BAI MENSEKI =	245.875162	
		MENSEKI =	122.937581	

変更後の資料なし

2 LOT

TENMEI	X	Y	(X-X0)*(YN-1-Y0)	(XN-1-X0)*(Y-Y0)
X0.Y0	- 149900.000	- 39000.000		
OS511-21	- 149920.615	- 39048.483		
OS511-22	- 149929.281	- 39048.442	+ 1419.630723	+ 998.631830
OS511-64	- 149929.367	- 39065.710	+ 1422.596214	+ 1924.054510
OS511-65	- 149919.485	- 39065.772	+ 1280.359350	+ 1931.526324
OS511-66	- 149919.459	- 39056.916	+ 1279.857348	+ 1109.008260
OS511-67	- 149920.649	- 39056.912	+ 1175.258484	+ 1107.450608
OS511-21	- 149920.615	- 39048.483	+ 1173.240880	+ 1001.125467
			+ 7750.942999	+ 8071.796999
		BAI MENSEKI =	320.854000	
		MENSEKI =	160.427000	

変更後の資料なし

3 LOT

TENMEI	X	Y	(X-X0)*(YN-1-Y0)	(XN-1-X0)*(Y-Y0)
X0.Y0	- 149900.000	- 39000.000		
OS511-22	- 149929.281	- 39048.442		
OS511-23	- 149931.280	- 39048.433	+ 1515.265760	+ 1418.166673

\*\*\*\*\* MENSEKI KEISAN \*\*\*\*\*

TENMEI	X	Y	(X-X0)*(YN-1-Y0)	(XN-1-X0)*(Y-Y0)
OS511-63	- 149931.368	- 39065.698	+ 1519.246344	+ 2055.033440
OS511-64	- 149929.367	- 39065.710	+ 1929.353166	+ 2061.191280
OS511-22	- 149929.281	- 39048.442	+ 1924.054510	+ 1422.596214
			+ 6887.919780	+ 6956.987607
		BAI MENSEKI =	69.067827	変更後の資料なし
		MENSEKI =	34.533913	

4 LOT

TENMEI	X	Y	(X-X0)*(YN-1-Y0)	(XN-1-X0)*(Y-Y0)
X0.Y0	- 149900.000	- 39000.000		
OS511-23	- 149931.280	- 39048.433		
OS511-24	- 149933.281	- 39048.424	+ 1611.898673	+ 1514.702720
OS511-61	- 149933.369	- 39065.686	+ 1615.860456	+ 2186.095766
OS511-63	- 149931.368	- 39065.698	+ 2060.438448	+ 2192.276562
OS511-23	- 149931.280	- 39048.433	+ 2055.033440	+ 1519.246344
			+ 7343.231017	+ 7412.321392
		BAI MENSEKI =	69.090375	変更後の資料なし
		MENSEKI =	34.545187	

5 LOT

TENMEI	X	Y	(X-X0)*(YN-1-Y0)	(XN-1-X0)*(Y-Y0)
X0.Y0	- 149900.000	- 39000.000		
OS511-65	- 149919.485	- 39065.772		
OS511-61	- 149933.369	- 39065.686	+ 2194.745868	+ 1279.891710
OS511-54	- 149933.402	- 39072.104	+ 2194.043772	+ 2406.038376
OS511-53	- 149919.504	- 39072.199	+ 1406.316416	+ 2411.590998
OS511-65	- 149919.485	- 39065.772	+ 1406.797515	+ 1282.817088
			+ 7201.903571	+ 7380.338172
		BAI MENSEKI =	178.434601	変更後の資料なし
		MENSEKI =	89.217300	

6 LOT

TENMEI	X	Y	(X-X0)*(YN-1-Y0)	(XN-1-X0)*(Y-Y0)
X0.Y0	- 149900.000	- 39000.000		
OS511-24	- 149933.281	- 39048.424		
OS511-25	- 149941.731	- 39048.384	+ 2020.781944	+ 1610.267904
OS511-60	- 149941.813	- 39061.292	+ 2023.080192	+ 2557.776452
OS511-62	- 149933.347	- 39061.322	+ 2043.904324	+ 2564.056786
OS511-24	- 149933.281	- 39048.424	+ 2040.857482	+ 1614.795128
			+ 8128.623942	+ 8346.896270
		BAI MENSEKI =	218.272328	変更後の資料なし
		MENSEKI =	109.136164	

7 LOT

TENMEI	X	Y	(X-X0)*(YN-1-Y0)	(XN-1-X0)*(Y-Y0)
X0.Y0	- 149900.000	- 39000.000		
OS511-62	- 149933.347	- 39061.322		
OS511-60	- 149941.813	- 39061.292	+ 2564.056786	+ 2043.904324
OS511-56	- 149941.882	- 39072.046	+ 2567.031544	+ 3012.459398
OS511-54	- 149933.402	- 39072.104	+ 2406.480492	+ 3019.859728
OS511-62	- 149933.347	- 39061.322	+ 2404.452088	+ 2048.277444
			+ 9942.020910	+ 10124.500894
		BAI MENSEKI =	182.479984	
		MENSEKI =	91.239992	変更後の資料なし

8 LOT

TENMEI	X	Y	(X-X0)*(YN-1-Y0)	(XN-1-X0)*(Y-Y0)
X0.Y0	- 149900.000	- 39000.000		
OS511-25	- 149941.731	- 39048.384		
OS511-8	- 149945.528	- 39048.366	+ 2202.826752	+ 2018.361546
OS511-9	- 149950.760	- 39053.338	+ 2455.058160	+ 2428.372464
OS511-26	- 149951.360	- 39066.229	+ 2739.439680	+ 3361.784040
OS511-59	- 149941.845	- 39066.323	+ 2771.352505	+ 3406.349280
OS511-25	- 149941.731	- 39048.384	+ 2767.725113	+ 2024.628480
			+ 12936.402210	+ 13239.495810
		BAI MENSEKI =	303.093600	
		MENSEKI =	151.546800	

9 LOT

TENMEI	X	Y	(X-X0)*(YN-1-Y0)	(XN-1-X0)*(Y-Y0)
X0.Y0	- 149900.000	- 39000.000		
OS511-26	- 149951.360	- 39066.229		
OS511-27	- 149951.627	- 39071.979	+ 3419.204583	+ 3696.841440
OS511-56	- 149941.882	- 39072.046	+ 3014.624478	+ 3719.518842
OS511-59	- 149941.845	- 39066.323	+ 3014.764870	+ 2777.739886
OS511-26	- 149951.360	- 39066.229	+ 3406.349280	+ 2771.352505
			+ 12854.943211	+ 12965.452673
		BAI MENSEKI =	110.509462	
		MENSEKI =	55.254731	

10 LOT

TENMEI	X	Y	(X-X0)*(YN-1-Y0)	(XN-1-X0)*(Y-Y0)
X0.Y0	- 149900.000	- 39000.000		
OS511-27	- 149951.627	- 39071.979		
OS511-28	- 149951.800	- 39075.704	+ 3728.512200	+ 3908.370408

\* \* \* \* \* M E N S E K I K E I S A N \* \* \* \* \*

TENMEI	X	Y	(X-X0)*(Yn-1-Y0)	(Xn-1-X0)*(Y-Y0)
OS511-58	- 149942.604	- 39075.781	+ 3225.293216	+ 3925.455800
OS511-57	- 149942.573	- 39072.041	+ 3226.224513	+ 3069.234764
OS511-27	- 149951.627	- 39071.979	+ 3719.260707	+ 3064.361967
			+ 13899.290636	+ 13967.422939
		BAI MENSEKI =	68.132303	
		MENSEKI =	34.066151	

11 LOT

TENMEI	X	Y	(X-X0)*(Yn-1-Y0)	(Xn-1-X0)*(Y-Y0)
X0.Y0	- 149900.000	- 39000.000		
OS511-28	- 149951.800	- 39075.704		
OS511-29	- 149952.830	- 39097.838	+ 3999.442320	+ 5068.008400
OS511-47	- 149926.453	- 39097.596	+ 2588.108614	+ 5155.996680
OS511-50	- 149926.612	- 39084.178	+ 2597.224752	+ 2226.760634
OS511-52	- 149934.064	- 39084.122	+ 2867.439392	+ 2238.654664
OS511-55	- 149933.871	- 39072.101	+ 2849.296262	+ 2456.048464
OS511-57	- 149942.573	- 39072.041	+ 3069.555873	+ 2440.100711
OS511-58	- 149942.604	- 39075.781	+ 3069.234764	+ 3226.224513
OS511-28	- 149951.800	- 39075.704	+ 3925.455800	+ 3225.293216
			+ 24965.757777	+ 26037.087282
		BAI MENSEKI =	1071.329505	
		MENSEKI =	535.664752	

12 LOT

TENMEI	X	Y	(X-X0)*(Yn-1-Y0)	(Xn-1-X0)*(Y-Y0)
X0.Y0	- 149900.000	- 39000.000		
OS511-29	- 149952.830	- 39097.838		
OS511-30	- 149953.578	- 39113.927	+ 5241.964364	+ 6018.763410
OS511-44	- 149925.810	- 39114.058	+ 2940.455870	+ 6110.999524
OS511-46	- 149925.743	- 39097.589	+ 2936.195094	+ 2518.772090
OS511-29	- 149952.830	- 39097.838	+ 5155.626870	+ 2518.643634
			+ 16274.242198	+ 17167.178658
		BAI MENSEKI =	892.936460	
		MENSEKI =	446.468230	

13 LOT

TENMEI	X	Y	(X-X0)*(Yn-1-Y0)	(Xn-1-X0)*(Y-Y0)
X0.Y0	- 149900.000	- 39100.000		
OS511-30	- 149953.578	- 39113.927		
OS511-31	- 149954.731	- 39138.714	+ 762.238637	+ 2074.218692
OS511-40	- 149927.762	- 39139.982	+ 1074.778068	+ 2188.254842
OS511-43	- 149927.631	- 39114.049	+ 1104.742642	+ 390.028338

\*\*\*\*\* MENSEKI KEISAN \*\*\*\*\*

TENMEI	X	Y	(X-X0)*(YN-1-Y0)	(XN-1-X0)*(Y-Y0)
OS511-30	- 149953.578	- 39113.927	+ 752.717322	+ 384.816937
			+ 3694.476669	+ 5037.318809
		BAI MENSEKI =	1342.842140	
		MENSEKI =	671.421070	

14 LOT

TENMEI	X	Y	(X-X0)*(YN-1-Y0)	(XN-1-X0)*(Y-Y0)
X0.Y0	- 149900.000	- 39100.000		
OS511-43	- 149927.631	- 39114.049		
OS511-40	- 149927.762	- 39139.982	+ 390.028338	+ 1104.742642
OS511-41	- 149925.945	- 39140.067	+ 1037.332990	+ 1112.340054
OS511-42	- 149925.815	- 39115.233	+ 1034.329605	+ 395.220185
OS511-44	- 149925.810	- 39114.058	+ 393.163730	+ 362.907270
OS511-43	- 149927.631	- 39114.049	+ 388.436598	+ 362.604690
			+ 3243.291261	+ 3337.814841
		BAI MENSEKI =	94.523580	
		MENSEKI =	47.261790	

15 LOT

TENMEI	X	Y	(X-X0)*(YN-1-Y0)	(XN-1-X0)*(Y-Y0)
X0.Y0	- 149900.000	- 39100.000		
OS511-5	- 149955.352	- 39152.071		
OS511-32	- 149949.466	- 39152.103	+ 2575.744086	+ 2884.005256
OS511-36	- 149949.339	- 39138.967	+ 2570.709917	+ 1927.541622
OS511-31	- 149954.731	- 39138.714	+ 2132.702877	+ 1910.110046
OS511-5	- 149955.352	- 39152.071	+ 2142.897328	+ 2849.897901
			+ 9422.054208	+ 9571.554825
		BAI MENSEKI =	149.500617	
		MENSEKI =	74.750308	

16 LOT

TENMEI	X	Y	(X-X0)*(YN-1-Y0)	(XN-1-X0)*(Y-Y0)
X0.Y0	- 149900.000	- 39100.000		
OS511-32	- 149949.466	- 39152.103		
OS511-33	- 149942.593	- 39152.140	+ 2219.223079	+ 2579.157240
OS511-37	- 149942.476	- 39139.290	+ 2214.698640	+ 1673.478970
OS511-36	- 149949.339	- 39138.967	+ 1938.529310	+ 1655.162292
OS511-32	- 149949.466	- 39152.103	+ 1927.541622	+ 2570.709917
			+ 8299.992651	+ 8478.508419
		BAI MENSEKI =	178.515768	
		MENSEKI =	89.257884	



17 LOT

TENMEI	X	Y	(X-X0)*(Yn-1-Y0)	(Xn-1-X0)*(Y-Y0)
X0.Y0	- 149900.000	- 39100.000		
OS511-33	- 149942.593	- 39152.140		
OS511-34	- 149935.564	- 39152.178	+ 1854.306960	+ 2222.417554
OS511-38	- 149935.460	- 39139.620	+ 1850.231880	+ 1409.045680
OS511-37	- 149942.476	- 39139.290	+ 1682.899120	+ 1393.223400
OS511-33	- 149942.593	- 39152.140	+ 1673.478970	+ 2214.698640
			+ 7060.916930	+ 7239.385274
		BAI MENSEKI =	178.468344	
		MENSEKI =	89.234172	

18 LOT

TENMEI	X	Y	(X-X0)*(Yn-1-Y0)	(Xn-1-X0)*(Y-Y0)
X0.Y0	- 149900.000	- 39100.000		
OS511-34	- 149935.564	- 39152.178		
OS511-35	- 149930.138	- 39152.207	+ 1572.540564	+ 1856.689748
OS511-39	- 149930.042	- 39139.875	+ 1568.402694	+ 1201.752750
OS511-38	- 149935.460	- 39139.620	+ 1413.967500	+ 1190.264040
OS511-34	- 149935.564	- 39152.178	+ 1409.045680	+ 1850.231880
			+ 5963.956438	+ 6098.938418
		BAI MENSEKI =	134.981980	
		MENSEKI =	67.490990	

19 LOT

TENMEI	X	Y	(X-X0)*(Yn-1-Y0)	(Xn-1-X0)*(Y-Y0)
X0.Y0	- 149900.000	- 39100.000		
OS511-35	- 149930.138	- 39152.207		
OS511-6	- 149914.743	- 39152.289	+ 769.687801	+ 1575.885882
OS511-7	- 149912.600	- 39150.305	+ 658.841400	+ 741.646615
OS511-12	- 149911.913	- 39140.727	+ 599.283465	+ 513.160200
OS511-39	- 149930.042	- 39139.875	+ 1223.520534	+ 475.030875
OS511-35	- 149930.138	- 39152.207	+ 1201.752750	+ 1568.402694
			+ 4453.085950	+ 4874.126266
		BAI MENSEKI =	421.040316	
		MENSEKI =	210.520158	

20 LOT

TENMEI	X	Y	(X-X0)*(Yn-1-Y0)	(Xn-1-X0)*(Y-Y0)
X0.Y0	- 149900.000	- 39100.000		
OS511-12	- 149911.913	- 39140.727		
OS511-13	- 149910.176	- 39116.518	+ 414.437952	+ 196.778934

\*\*\*\*\* MENSEKI KEISAN \*\*\*\*\*

TENMEI	X	Y	(X-X0)*(YN-1-Y0)	(XN-1-X0)*(Y-Y0)
OS511-42	- 149925.815	- 39115.233	+ 426.412170	+ 155.011008
OS511-41	- 149925.945	- 39140.067	+ 395.220185	+ 1034.329605
OS511-12	- 149911.913	- 39140.727	+ 477.318171	+ 1056.662015
			+ 1713.388478	+ 2442.781562
		BAI MENSEKI =	729.393084	
		MENSEKI =	364.696542	

21 LOT

TENMEI	X	Y	(X-X0)*(YN-1-Y0)	(XN-1-X0)*(Y-Y0)
X0.Y0	- 149900.000	- 39100.000		
OS511-13	- 149910.176	- 39116.518		
OS511-14	- 149909.322	- 39104.617	+ 153.980796	+ 46.982592
OS511-45	- 149925.769	- 39103.871	+ 118.975473	+ 36.085462
OS511-42	- 149925.815	- 39115.233	+ 99.929865	+ 392.539177
OS511-13	- 149910.176	- 39116.518	+ 155.011008	+ 426.412170
			+ 527.897142	+ 902.019401
		BAI MENSEKI =	374.122259	
		MENSEKI =	187.061129	

22LOTと合筆

22 LOT

TENMEI	X	Y	(X-X0)*(YN-1-Y0)	(XN-1-X0)*(Y-Y0)
X0.Y0	- 149900.000	- 39000.000		
OS511-14	- 149909.322	- 39104.617		
OS511-15	- 149908.856	- 39098.119	+ 926.488152	+ 914.665318
OS511-46	- 149925.743	- 39097.589	+ 2525.877417	+ 864.248184
OS511-45	- 149925.769	- 39103.871	+ 2514.770941	+ 2673.951153
OS511-14	- 149909.322	- 39104.617	+ 968.285462	+ 2695.875473
			+ 6935.421972	+ 7148.740128
		BAI MENSEKI =	213.318156	
		MENSEKI =	106.659078	

21LOTと合筆

23 LOT

TENMEI	X	Y	(X-X0)*(YN-1-Y0)	(XN-1-X0)*(Y-Y0)
X0.Y0	- 149900.000	- 39000.000		
OS511-15	- 149908.856	- 39098.119		
OS511-16	- 149908.096	- 39087.526	+ 794.371424	+ 775.130256
OS511-48	- 149926.574	- 39087.393	+ 2325.915924	+ 707.533728
OS511-47	- 149926.453	- 39097.596	+ 2311.807029	+ 2593.516104
OS511-46	- 149925.743	- 39097.589	+ 2512.413828	+ 2581.521817
OS511-15	- 149908.856	- 39098.119	+ 864.248184	+ 2525.877417
			+ 8808.756389	+ 9183.579322
		BAI MENSEKI =	374.822933	
		MENSEKI =	187.411466	

変更後の資料なし

24 LOT

TENMEI	X	Y	(X-X0)*(YN-1-Y0)	(XN-1-X0)*(Y-Y0)
X0.Y0	- 149900.000	- 39000.000		
OS511-16	- 149908.096	- 39087.526		
OS511-17	- 149907.986	- 39085.989	+ 698.982636	+ 696.166944
OS511-49	- 149926.599	- 39085.294	+ 2287.221411	+ 681.157884
OS511-48	- 149926.574	- 39087.393	+ 2266.602756	+ 2324.566407
OS511-16	- 149908.096	- 39087.526	+ 707.533728	+ 2325.915924
			+ 5960.340531	+ 6027.807159
	BAI MENSEKI	=	67.466628	
	MENSEKI	=	33.733314	

25 LOT

TENMEI	X	Y	(X-X0)*(YN-1-Y0)	(XN-1-X0)*(Y-Y0)
X0.Y0	- 149900.000	- 39000.000		
OS511-17	- 149907.986	- 39085.989		
OS511-2	- 149907.889	- 39084.647	+ 678.367221	+ 675.990942
OS511-18	- 149907.828	- 39083.606	+ 662.616716	+ 659.567734
OS511-51	- 149926.621	- 39083.451	+ 2225.675326	+ 653.254428
OS511-49	- 149926.599	- 39085.294	+ 2219.713149	+ 2270.611574
OS511-17	- 149907.986	- 39085.989	+ 681.157884	+ 2287.221411
			+ 6467.530296	+ 6546.646089
	BAI MENSEKI	=	79.115793	
	MENSEKI	=	39.557896	

26 LOT

TENMEI	X	Y	(X-X0)*(YN-1-Y0)	(XN-1-X0)*(Y-Y0)
X0.Y0	- 149900.000	- 39000.000		
OS511-18	- 149907.828	- 39083.606		
OS511-19	- 149907.170	- 39072.283	+ 599.455020	+ 565.831324
OS511-55	- 149933.871	- 39072.101	+ 2448.297493	+ 516.964170
OS511-52	- 149934.064	- 39084.122	+ 2456.048464	+ 2849.296262
OS511-50	- 149926.612	- 39084.178	+ 2238.654664	+ 2867.439392
OS511-51	- 149926.621	- 39083.451	+ 2240.902538	+ 2220.798012
OS511-18	- 149907.828	- 39083.606	+ 653.254428	+ 2225.675326
			+ 10636.612607	+ 11246.004486
	BAI MENSEKI	=	609.391879	
	MENSEKI	=	304.695939	

変更後の資料なし

27 LOT

TENMEI	X	Y	(X-X0)*(YN-1-Y0)	(XN-1-X0)*(Y-Y0)
X0.Y0	- 149900.000	- 39000.000		
OS511-19	- 149907.170	- 39072.283		
OS511-20	- 149906.280	- 39056.966	+ 453.937240	+ 408.446220

\*\*\*\*\* MENSEKI KEISAN \*\*\*\*\*

TENMEI	X	Y	(X-X0)*(YN-1-Y0)	(XN-1-X0)*(Y-Y0)
OS511-66	- 149919.459	- 39056.916	+ 1108.501394	+ 357.432480
OS511-53	- 149919.504	- 39072.199	+ 1110.089664	+ 1404.920341
OS511-19	- 149907.170	- 39072.283	+ 517.666830	+ 1409.807632
			+ 3190.195128	+ 3580.606673
		BAI MENSEKI =	390.411545	
		MENSEKI =	195.205772	

1 追加

TENMEI	X	Y	(X-X0)*(YN-1-Y0)	(XN-1-X0)*(Y-Y0)
X0.Y0	- 149900.000	- 39100.000		
OS511-1	- 149912.743	- 39152.300		
OS511-6	- 149914.743	- 39152.289	+ 771.058900	+ 666.318727
OS511-7	- 149912.600	- 39150.305	+ 658.841400	+ 741.646615
OS511-1	- 149912.743	- 39152.300	+ 641.036615	+ 658.980000
			+ 2070.936915	+ 2066.945342
		BAI MENSEKI =	3.991573	
		MENSEKI =	1.995786	

4 追加

TENMEI	X	Y	(X-X0)*(YN-1-Y0)	(XN-1-X0)*(Y-Y0)
X0.Y0	- 149900.000	- 39000.000		
OS511-4	- 149950.528	- 39048.343		
OS511-8	- 149945.528	- 39048.366	+ 2200.960104	+ 2443.837248
OS511-9	- 149950.760	- 39053.338	+ 2455.058160	+ 2428.372464
OS511-4	- 149950.528	- 39048.343	+ 2695.062464	+ 2453.890680
			+ 7351.080728	+ 7326.100392
		BAI MENSEKI =	24.980336	
		MENSEKI =	12.490168	

16 LOT

NO.	X	Y	(X-X <sub>0</sub> ) (Y <sub>N-1</sub> -Y <sub>0</sub> )	(X <sub>N-1</sub> -X <sub>0</sub> ) (Y-Y <sub>0</sub> )
X <sub>0</sub> Y <sub>0</sub>	-149900.000	-39100.000		
37	-149942.444	-39139.291		
36	-149949.339	-39138.967	1938.578649	1653.915348
32	-149949.466	-39152.103	1927.541622	2570.709917
33	-149942.552	-39152.140	2217.086856	2579.157240
37	-149942.444	-39139.291	2213.030160	1671.910632
			8296.237287	8475.693137
			イメジキ=	179.455850
			スジキ=	89.727925

17 LOT

NO.	X	Y	(X-X <sub>0</sub> ) (Y <sub>N-1</sub> -Y <sub>0</sub> )	(X <sub>N-1</sub> -X <sub>0</sub> ) (Y-Y <sub>0</sub> )
X <sub>0</sub> Y <sub>0</sub>	-149900.000	-39100.000		
38	-149935.460	-39139.620		
37	-149942.444	-39139.291	1681.631280	1393.258860
33	-149942.552	-39152.140	1671.910632	2213.030160
34	-149935.564	-39152.178	1854.306960	2220.278256
38	-149935.460	-39139.620	1850.231880	1409.045680
			7058.080752	7235.612956
			イメジキ=	177.532204
			スジキ=	88.766102

25 LOT

元NO. X。Y。	X	Y	(X-X。)(YN-1-Y。)	(XN-1-X。)(Y-Y。)
18	-149900.000	-39000.000		
18	-149907.829	-39083.619		
51	-149926.620	-39083.464	2225.937780	653.439656
50	-149926.612	-39084.178	2221.143968	2240.818360
49	-149926.599	-39085.294	2239.050622	2269.843928
17	-149907.986	-39085.989	681.157884	2287.221411
2	-149907.889	-39084.647	678.367221	675.990942
18	-149907.829	-39083.619	662.701363	659.670291
			8708.358838	8786.984588
			ハ イメジキ=	78.625750
			メジキ=	39.312875

26 LOT

元NO. X。Y。	X	Y	(X-X。)(YN-1-Y。)	(XN-1-X。)(Y-Y。)
19	-149900.000	-39000.000		
19	-149907.170	-39072.283		
55	-149933.871	-39072.101	2448.297493	516.964170
52	-149934.064	-39084.122	2456.048464	2849.296262
50	-149926.612	-39084.178	2238.654664	2867.439392
51	-149926.620	-39083.464	2240.818360	2221.143968
18	-149907.829	-39083.619	653.439656	2225.937780
19	-149907.170	-39072.283	599.548230	565.903607
			10636.806867	11246.685179
			ハ イメジキ=	609.878312
			メジキ=	304.939156

51-1 Block



13-1 LOT

POINT X <sub>0</sub> Y <sub>0</sub>	X	Y	(X-X <sub>0</sub> ) (Y-Y <sub>0</sub> )	(X <sub>N-1</sub> -X <sub>0</sub> ) (Y-Y <sub>0</sub> )
30	-149953.578	-39113.927		
101	-149954.206	-39127.426	754.926962	1469.430228
102	-149935.813	-39127.991	982.207338	1517.280146
100	-149936.352	-39139.578	1017.528832	1417.406914
40	-149927.762	-39139.982	1098.764436	1453.425664
43	-149927.631	-39114.049	1104.742642	390.028338
30	-149953.578	-39113.927	752.717322	384.816937
			5710.887532	6632.388227
			平均値=	921.500695
			標準値=	460.750347

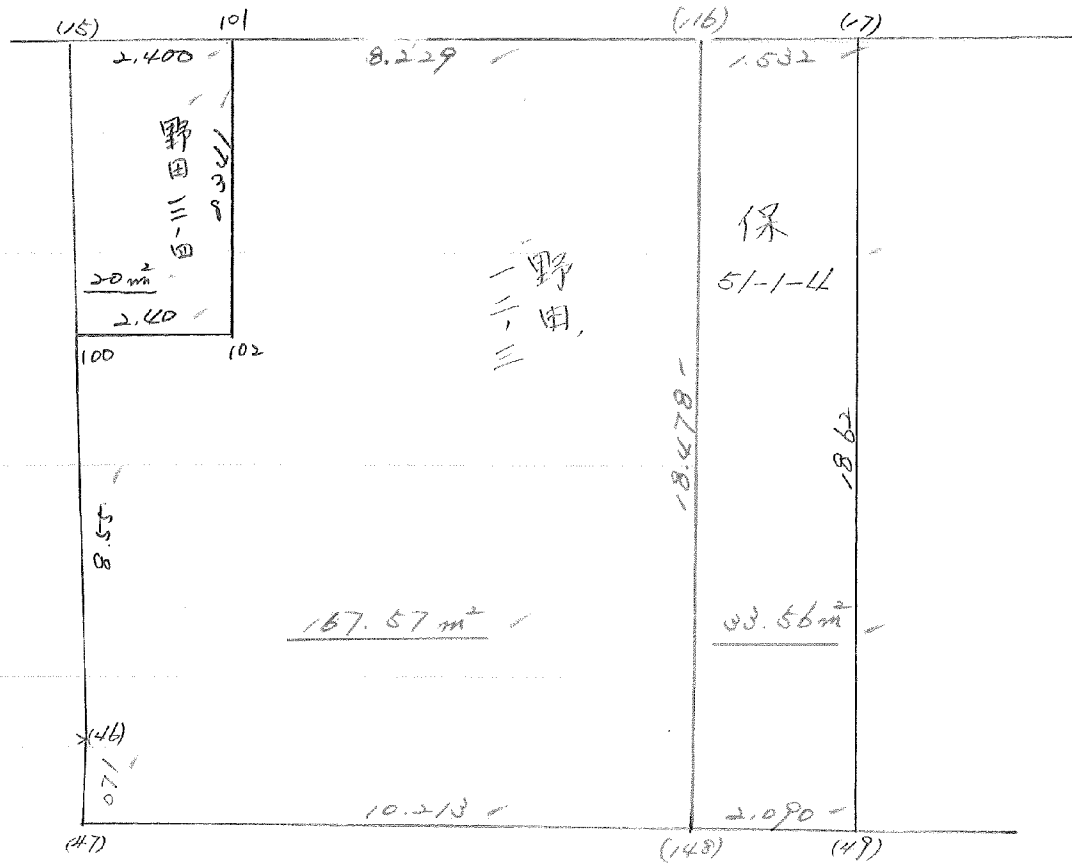
13-2 LOT

POINT X <sub>0</sub> Y <sub>0</sub>	X	Y	(X-X <sub>0</sub> ) (Y-Y <sub>0</sub> )	(X <sub>N-1</sub> -X <sub>0</sub> ) (Y-Y <sub>0</sub> )
101	-149954.206	-39127.426		
31	-149954.731	-39138.714	1501.052406	2098.531084
100	-149936.352	-39139.578	1407.331328	2166.143518
102	-149935.813	-39127.991	1417.406914	1017.528832
101	-149954.206	-39127.426	1517.280146	982.207338
			5843.070794	6264.410772
			平均値=	421.339978
			標準値=	210.669989



056.12.10

51-1 Block 1



23 LOT

元/NO. X。Y。	X	Y	(X-X。)(YN-1-Y。)	(XN-1-X。)(Y-Y。)
	-149900.000	-39000.000		
101	-149908.684	-39095.725		
116	-149908.096	-39087.517	774.989600	759.997628
148	-149926.574	-39087.384	2325.676758	707.460864
47	-149926.453	-39097.596	2311.568952	2593.516104
46	-149925.743	-39097.589	2512.413828	2581.521817
100	-149917.193	-39097.858	1677.847677	2519.158494
102	-149917.021	-39095.463	1665.641018	1641.295359
101	-149908.684	-39095.725	829.000692	1629.335225
			12097.138525	12432.285491
			Δイ/セキ=	335.146966
			Δセキ=	167.573483

(ホ)51-1-4 LOT

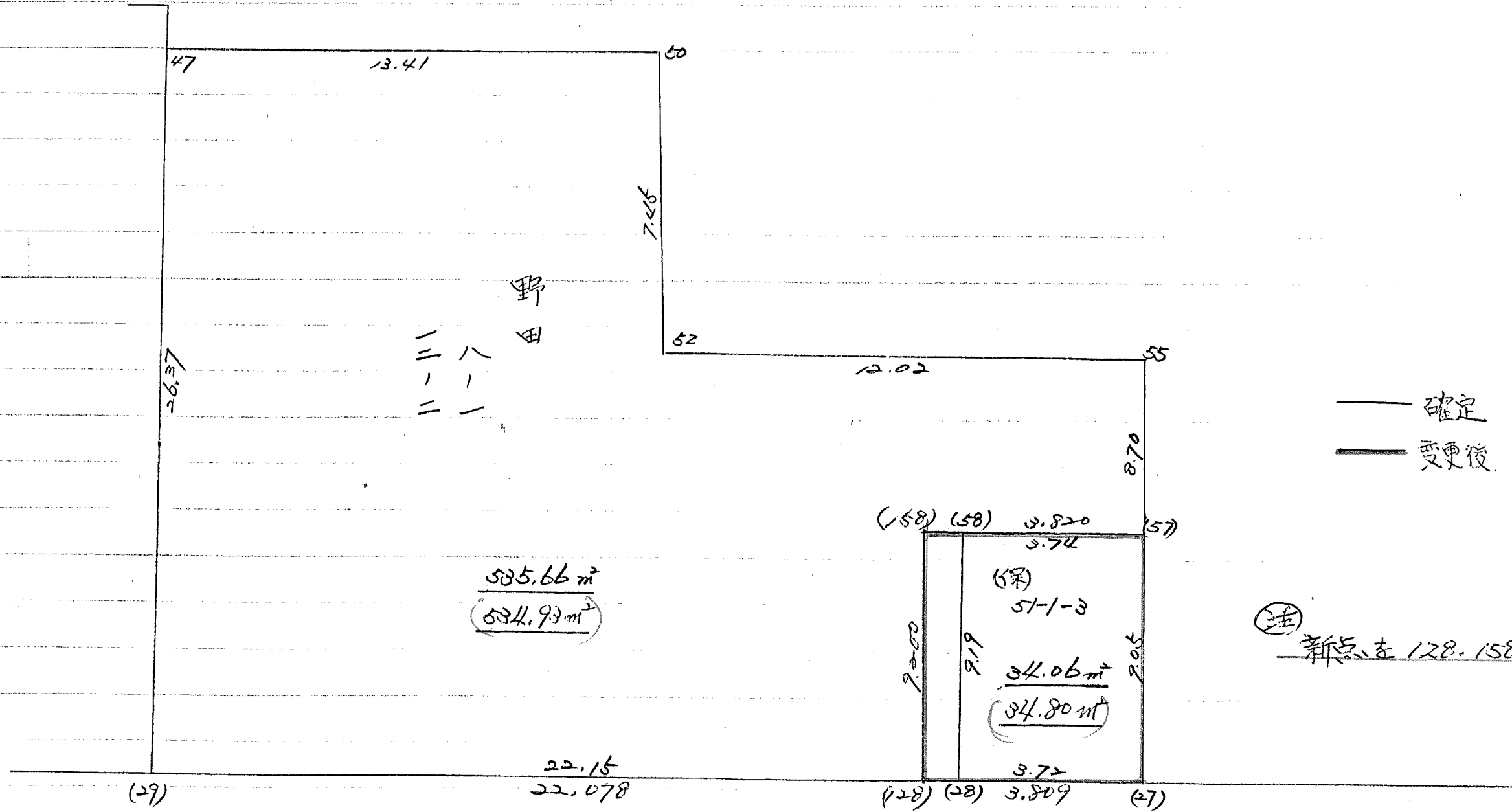
\*\*\*\*\*

(ホ)51-1-4 LOT

元/NO. X。Y。	X	Y	(X-X。)(YN-1-Y。)	(XN-1-X。)(Y-Y。)
	-149900.000	-39000.000		
116	-149908.096	-39087.517		
17	-149907.986	-39085.989	698.910762	696.166944
49	-149926.599	-39085.294	2287.221411	681.157884
148	-149926.574	-39087.384	2266.602756	2324.327016
116	-149908.096	-39087.517	707.460864	2325.676758
			5960.195793	6027.328602
			Δイ/セキ=	67.132809
			Δセキ=	33.566404

51-1 BLOCK.

◎ 556. 11. 7



10 LOT

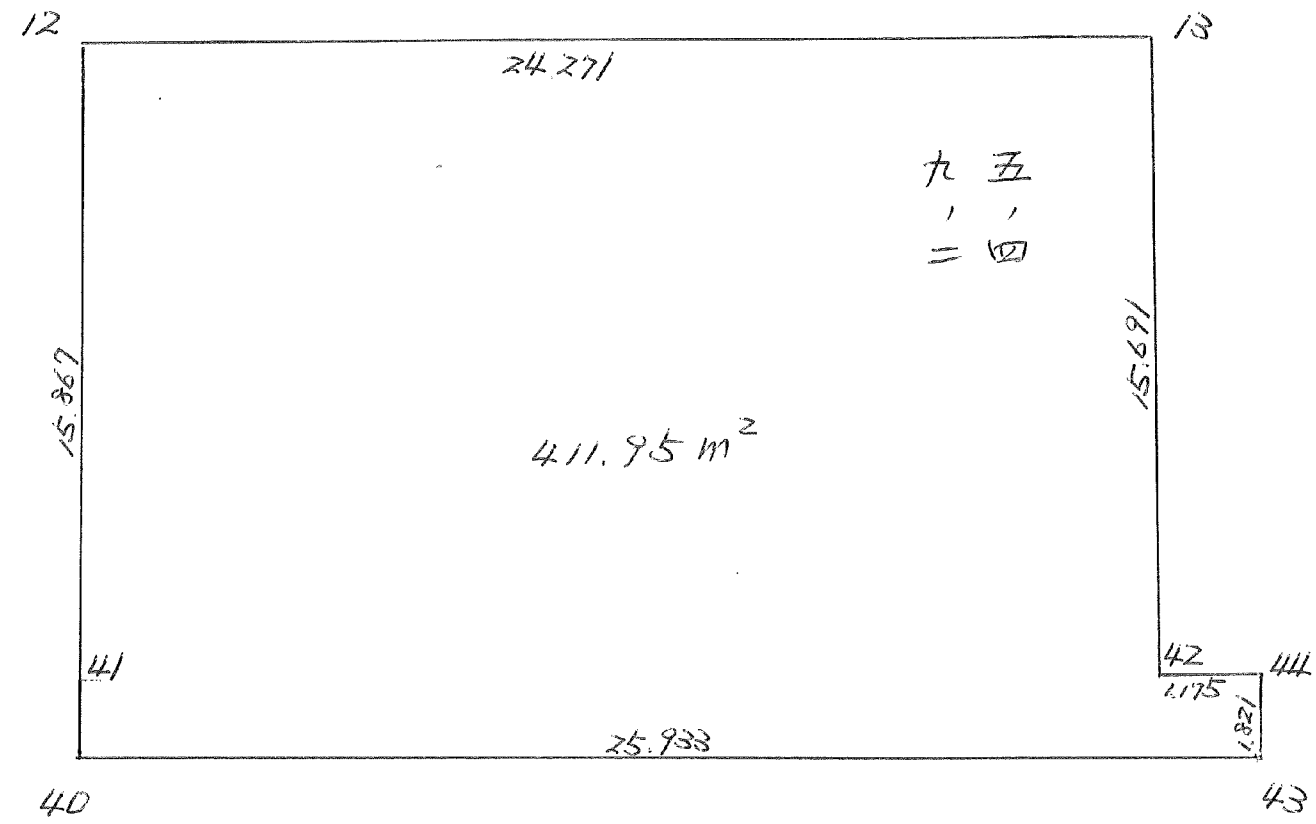
テ/NO. X <sub>o</sub> Y <sub>o</sub>	X	Y	(X-X <sub>o</sub> )(Y <sub>N-1</sub> -Y <sub>o</sub> )	(X <sub>N-1</sub> -X <sub>o</sub> )(Y-Y <sub>o</sub> )
158	-149942.604	-39075.861		
57	-149942.573	-39072.041	3229.630353	3069.234764
27	-149951.627	-39071.979	3719.260707	3064.361967
128	-149951.804	-39075.784	3728.800116	3912.500568
158	-149942.604	-39075.861	3228.701536	3929.903244
			13906.392712	13976.000543
			ハ イノセキ=	69.607831
			ノセキ=	34.803915

11 LOT

テ/NO. X <sub>o</sub> Y <sub>o</sub>	X	Y	(X-X <sub>o</sub> )(Y <sub>N-1</sub> -Y <sub>o</sub> )	(X <sub>N-1</sub> -X <sub>o</sub> )(Y-Y <sub>o</sub> )
55	-149933.871	-39072.101		
57	-149942.573	-39072.041	3069.555873	2440.100711
158	-149942.604	-39075.861	3069.234764	3229.630353
128	-149951.804	-39075.784	3929.903244	3228.701536
29	-149952.830	-39097.838	4003.668720	5068.399752
47	-149926.453	-39097.596	2588.108614	5155.996680
50	-149926.612	-39084.178	2597.224752	2226.760634
52	-149934.064	-39084.122	2867.439392	2238.654664
55	-149933.871	-39072.101	2849.296262	2456.048464
			24974.431621	26044.292794
			ハ イノセキ=	1069.861173
			ノセキ=	534.930586

変更後の資料なし

BNO, 51-1



51-1 BLOCK

元/NO. X <sub>0</sub> , Y <sub>0</sub> =	X	Y	(X-X <sub>0</sub> ) (Y <sub>N-1</sub> -Y <sub>0</sub> )	(X <sub>N-1</sub> -X <sub>0</sub> ) (Y-Y <sub>0</sub> )
12	-149900.000	-39100.000		
12	-149911.913	-39140.727		
13	-149910.176	-39116.518	414.437952	196.778934
42	-149925.815	-39115.233	426.412170	155.011008
44	-149925.810	-39114.058	393.163730	362.907270
43	-149927.631	-39114.049	388.436598	362.604690
40	-149927.762	-39139.982	390.028338	1104.742642
41	-149925.945	-39140.067	1037.332990	1112.340054
12	-149911.913	-39140.727	477.318171	1056.662015
			3527.129949	4351.046613
			ハイ/セキ=	823.916664
			ノセキ=	411.958332