

画地確定計算書

BLOCK NO. 142

BLOCK . LOT KAKUHITSU MENSEKI SUMIKIRI.SUIRO MENSEKI

142 BLOCK

6339.638580

1 LOT	1026.602280
2 LOT	699.572577
3 LOT	843.265636
4 LOT	1110.837874
5 LOT	909.731588
6 LOT	632.656208
7 LOT	98.619006
8 LOT	45.988214
9 LOT	108.794268
10 LOT	35.116820
11 LOT	43.907877
12 LOT	37.109912
13 LOT	111.000475
14 LOT	197.550713
15 LOT	224.669332
入付	214.110648

28.614031
 46.023015
 113.711524
 34.155768
 43.614676
 77.563721
 111.101911
 182.756915

保留地調整に付書更

2 入付
 3 入付

2.000919
 4.494834

TOTAL =

~~6339.563428~~

6.495753

***** MENSEKI KEISAN *****

142 BLOCK

TENMEI	X	Y	(X-X0)*(YN-1-Y0)	(XN-1-X0)*(Y-Y0)
X0.Y0	- 150500.000	- 38800.000		
OS142-1	- 150591.015	- 38937.090		
OS142-5	- 150584.024	- 38832.141	+ 11518.850160	+ 2925.313115
OS142-6	- 150585.887	- 38830.011	+ 2760.494067	+ 2521.644264
OS142-7	- 150638.358	- 38826.497	+ 4152.261938	+ 2275.747839
OS142-8	- 150641.687	- 38829.277	+ 3754.280439	+ 4050.707166
OS142-4	- 150653.060	- 38930.050	+ 4481.137620	+ 18426.394350
OS142-1	- 150591.015	- 38937.090	+ 11836.500750	+ 20982.995400
			+ 38503.524974	+ 51182.802134
		BAI MENSEKI =	12679.277160	
		MENSEKI =	6339.638580	

1 LOT

TENMEI	X	Y	(X-X0)*(YN-1-Y0)	(XN-1-X0)*(Y-Y0)
X0.Y0	- 150500.000	- 38800.000		
OS142-5	- 150584.024	- 38832.141		
OS142-6	- 150585.887	- 38830.011	+ 2760.494067	+ 2521.644264
OS142-21	- 150606.400	- 38828.637	+ 3193.170400	+ 2459.546019
OS142-33	- 150611.195	- 38871.578	+ 3184.291215	+ 7615.899200
OS142-20	- 150586.831	- 38874.286	+ 6215.189318	+ 8260.231770
OS142-5	- 150584.024	- 38832.141	+ 6241.806864	+ 2790.835171
			+ 21594.951864	+ 23648.156424
		BAI MENSEKI =	2053.204560	
		MENSEKI =	1026.602280	

2 LOT

TENMEI	X	Y	(X-X0)*(YN-1-Y0)	(XN-1-X0)*(Y-Y0)
X0.Y0	- 150600.000	- 38800.000		
OS142-21	- 150606.400	- 38828.637		
OS142-7	- 150638.358	- 38826.497	+ 1098.458046	+ 169.580800
OS142-8	- 150641.687	- 38829.277	+ 1104.580439	+ 1123.007166
OS142-22	- 150643.519	- 38845.514	+ 1274.105763	+ 1897.342118
OS142-34	- 150608.718	- 38849.395	+ 396.791052	+ 2149.621005
OS142-21	- 150606.400	- 38828.637	+ 316.128000	+ 249.657366
			+ 4190.063300	+ 5589.208455
		BAI MENSEKI =	1399.145155	
		MENSEKI =	699.572577	

3 LOT

TENMEI	X	Y	(X-X0)*(YN-1-Y0)	(XN-1-X0)*(Y-Y0)
X0.Y0	- 150600.000	- 38800.000		
OS142-34	- 150608.718	- 38849.395		
OS142-22	- 150643.519	- 38845.514	+ 2149.621005	+ 396.791052

***** M E N S E K I K E I S A N *****

TENMEI	X	Y	(X-X0)*(YN-1-Y0)	(XN-1-X0)*(Y-Y0)
OS142-23	- 150646.218	- 38869.432	+ 2103.566052	+ 3021.611208
OS142-32	- 150611.390	- 38873.321	+ 790.830480	+ 3388.749978
OS142-34	- 150608.718	- 38849.395	+ 639.212478	+ 562.609050
			+ 5683.230015	+ 7369.761288
		BAI MENSEKI =	1686.531273	
		MENSEKI =	843.265636	

4 LOT

TENMEI	X	Y	(X-X0)*(YN-1-Y0)	(XN-1-X0)*(Y-Y0)
X0.Y0	- 150600.000	- 38800.000		
OS142-32	- 150611.390	- 38873.321		
OS142-23	- 150646.218	- 38869.432	+ 3388.749978	+ 790.830480
OS142-24	- 150649.769	- 38900.897	+ 3455.561208	+ 4663.257546
OS142-27	- 150614.908	- 38904.823	+ 1504.172476	+ 5216.935887
OS142-32	- 150611.390	- 38873.321	+ 1193.933970	+ 1093.069468
			+ 9542.417632	+ 11764.093381
		BAI MENSEKI =	2221.675749	
		MENSEKI =	1110.837874	

5 LOT

TENMEI	X	Y	(X-X0)*(YN-1-Y0)	(XN-1-X0)*(Y-Y0)
X0.Y0	- 150600.000	- 38900.000		
OS142-27	- 150614.908	- 38904.823		
OS142-24	- 150649.769	- 38900.897	+ 240.035887	+ 13.372476
OS142-9	- 150652.675	- 38926.641	+ 47.249475	+ 1325.895929
OS142-25	- 150617.787	- 38930.597	+ 473.863467	+ 1611.696975
OS142-27	- 150614.908	- 38904.823	+ 456.140076	+ 85.786701
			+ 1217.288905	+ 3036.752081
		BAI MENSEKI =	1819.463176	
		MENSEKI =	909.731588	

6 LOT

TENMEI	X	Y	(X-X0)*(YN-1-Y0)	(XN-1-X0)*(Y-Y0)
X0.Y0	- 150500.000	- 38900.000		
OS142-11	- 150589.206	- 38909.928		
OS142-26	- 150615.152	- 38907.007	+ 1143.229056	+ 625.066442
OS142-25	- 150617.787	- 38930.597	+ 825.333509	+ 3523.305744
OS142-10	- 150590.787	- 38933.658	+ 2777.809839	+ 3964.474846
OS142-11	- 150589.206	- 38909.928	+ 3002.495548	+ 901.333336
			+ 7748.867952	+ 9014.180368
		BAI MENSEKI =	1265.312416	
		MENSEKI =	632.656208	

***** MENSEKI KEISAN *****

7 LOT

TENMEI	X	Y	(X-X0)*(YN-1-Y0)	(XN-1-X0)*(Y-Y0)
X0.Y0	- 150500.000	- 38900.000		
OS142-12	- 150589.073	- 38907.929		
OS142-35	- 150601.965	- 38906.483	+ 808.480485	+ 577.460259
OS142-36	- 150601.566	- 38902.935	+ 658.452378	+ 299.267275
OS142-28	- 150614.534	- 38901.475	+ 336.157290	+ 149.809850
OS142-26	- 150615.152	- 38907.007	+ 169.849200	+ 802.539738
OS142-11	- 150589.206	- 38909.928	+ 625.066442	+ 1143.229056
OS142-12	- 150589.073	- 38907.929	+ 884.316744	+ 707.314374
			+ 3482.322539	+ 3679.620552
		BAI MENSEKI =	197.298013	
		MENSEKI =	98.649006	

8 LOT

TENMEI	X	Y	(X-X0)*(YN-1-Y0)	(XN-1-X0)*(Y-Y0)
X0.Y0	- 150500.000	- 38900.000		
OS142-13	- 150588.836	- 38904.369		
OS142-36	- 150601.566	- 38902.935	+ 443.741854	+ 260.733660
OS142-35	- 150601.965	- 38906.483	+ 299.267275	+ 658.452378
OS142-12	- 150589.073	- 38907.929	+ 577.460259	+ 808.480485
OS142-13	- 150588.836	- 38904.369	+ 704.380644	+ 389.159937
			+ 2024.850032	+ 2116.826460
		BAI MENSEKI =	91.976428	
		MENSEKI =	45.988214	

9 LOT

TENMEI	X	Y	(X-X0)*(YN-1-Y0)	(XN-1-X0)*(Y-Y0)
X0.Y0	- 150500.000	- 38800.000		
OS142-14	- 150588.552	- 38900.106		
OS142-29	- 150614.070	- 38897.324	+ 11419.091420	+ 8618.234848
OS142-28	- 150614.534	- 38901.475	+ 11146.907016	+ 11575.253250
OS142-13	- 150588.836	- 38904.369	+ 9014.633100	+ 11953.799046
OS142-14	- 150588.552	- 38900.106	+ 9242.083688	+ 8893.016616
			+ 40822.715224	+ 41040.303760
		BAI MENSEKI =	217.588536	
		MENSEKI =	108.794268	

10 LOT

TENMEI	X	Y	(X-X0)*(YN-1-Y0)	(XN-1-X0)*(Y-Y0)
X0.Y0	- 150500.000	- 38800.000		
OS142-15	- 150588.462	- 38898.756		
OS142-30	- 150613.916	- 38895.945	+ 1249.888496	+ 8487.486590

***** MENSEKI KEISAN *****

TENMEI	X	Y	(X-X0)*(YN-1-Y0)	(XN-1-X0)*(Y-Y0)
OS142-29	- 150614.070	- 38897.324	+ 10944.446150	+ 11086.760784
OS142-14	- 150588.552	- 38900.106	+ 8618.234848	+ 11419.091420
OS142-15	- 150588.462	- 38898.756	+ 8855.576972	+ 8745.041312
			+ 39668.146466	+ 39738.380106
		BAI MENSEKI =	70.233640	
		MENSEKI =	35.116820	

11 LOT

TENMEI	X	Y	(X-X0)*(YN-1-Y0)	(XN-1-X0)*(Y-Y0)
X0.Y0	- 150500.000	- 38800.000		
OS142-16	- 150588.261	- 38895.745		
OS142-38	- 150602.660	- 38894.152	+ 9829.181700	+ 8309.949672
OS142-37	- 150603.002	- 38897.150	+ 9697.844304	+ 9973.419000
OS142-15	- 150588.462	- 38898.756	+ 8594.083300	+ 10172.065512
OS142-16	- 150588.261	- 38895.745	+ 8716.303316	+ 8469.794190
			+ 36837.412620	+ 36925.228374
		BAI MENSEKI =	87.815754	
		MENSEKI =	43.907877	

12 LOT

TENMEI	X	Y	(X-X0)*(YN-1-Y0)	(XN-1-X0)*(Y-Y0)
X0.Y0	- 150500.000	- 38800.000		
OS142-17	- 150588.090	- 38893.177		
OS142-39	- 150602.368	- 38891.595	+ 9538.343136	+ 8068.603550
OS142-38	- 150602.660	- 38894.152	+ 9403.142700	+ 9638.151936
OS142-16	- 150588.261	- 38895.745	+ 8309.949672	+ 9829.181700
OS142-17	- 150588.090	- 38893.177	+ 8434.177050	+ 8223.895197
			+ 35685.612558	+ 35759.832383
		BAI MENSEKI =	74.219825	
		MENSEKI =	37.109912	

13 LOT

TENMEI	X	Y	(X-X0)*(YN-1-Y0)	(XN-1-X0)*(Y-Y0)
X0.Y0	- 150500.000	- 38800.000		
OS142-18	- 150587.569	- 38885.363		
OS142-40	- 150601.481	- 38883.815	+ 8662.722603	+ 7339.595735
OS142-39	- 150602.368	- 38891.595	+ 8579.973920	+ 9295.152195
OS142-17	- 150588.090	- 38893.177	+ 8068.603550	+ 9538.343136
OS142-18	- 150587.569	- 38885.363	+ 8159.416713	+ 7519.626670
			+ 33470.716786	+ 33692.717736
		BAI MENSEKI =	222.000950	
		MENSEKI =	111.000475	

14 LOT

TENMEI	X	Y	(X-X0)*(YN-1-Y0)	(XN-1-X0)*(Y-Y0)
X0.Y0	- 150500.000	- 38800.000		
OS142-19	- 150587.436	- 38883.367		
OS142-31	- 150612.203	- 38880.609	+ 9354.027501	+ 7048.128524
OS142-30	- 150613.916	- 38895.945	+ 9182.654844	+ 10765.316835
OS142-37	- 150603.002	- 38897.150	+ 9882.526890	+ 11066.939400
OS142-40	- 150601.481	- 38883.815	+ 9858.879150	+ 8633.112630
OS142-18	- 150587.569	- 38885.363	+ 7339.595735	+ 8662.722603
OS142-19	- 150587.436	- 38883.367	+ 7463.799268	+ 7300.364823
			+ 53081.483388	+ 53476.584815
		BAI MENSEKI =	395.101427	
		MENSEKI =	197.550713	

15 LOT

TENMEI	X	Y	(X-X0)*(YN-1-Y0)	(XN-1-X0)*(Y-Y0)
X0.Y0	- 150500.000	- 38800.000		
OS142-20	- 150586.831	- 38874.286		
OS142-33	- 150611.195	- 38871.578	+ 8260.231770	+ 6215.189318
OS142-31	- 150612.203	- 38880.609	+ 8031.266334	+ 8963.317755
OS142-19	- 150587.436	- 38883.367	+ 7048.128524	+ 9354.027501
OS142-20	- 150586.831	- 38874.286	+ 7238.839977	+ 6495.270696
			+ 30578.466605	+ 31027.805270
		BAI MENSEKI =	449.338665	
		MENSEKI =	224.669332	

16 LOT

TENMEI	X	Y	(X-X0)*(YN-1-Y0)	(XN-1-X0)*(Y-Y0)
X0.Y0	- 150500.000	- 38900.000		
OS142-1	- 150591.015	- 38937.090		
OS142-10	- 150590.787	- 38933.658	+ 3367.289830	+ 3063.382870
OS142-9	- 150652.675	- 38926.641	+ 5138.735150	+ 2418.656467
OS142-4	- 150653.060	- 38930.050	+ 4077.671460	+ 4587.883750
OS142-1	- 150591.015	- 38937.090	+ 2735.000750	+ 5676.995400
			+ 15318.697190	+ 15746.918487
		BAI MENSEKI =	428.221297	
		MENSEKI =	214.110648	

2 17 LOT

TENMEI	X	Y	(X-X0)*(YN-1-Y0)	(XN-1-X0)*(Y-Y0)
X0.Y0	- 150500.000	- 38800.000		
OS142-2	- 150583.891	- 38830.145		
OS142-5	- 150584.024	- 38832.141	+ 2532.903480	+ 2696.340631

スロ LOT

元NO. X _o Y _o	X	Y	(X-X _o) (YN-1-Y _o)	(XN-1-X _o) (Y-Y _o)
10	-150590.787	-38933.658		
9	-150652.675	-38926.641	5138.735150	2418.656467
50	-150652.723	-38927.068	4068.693443	4132.606900
51	-150650.079	-38930.388	4062.338372	4640.946524
52	-150593.002	-38936.865	2826.144776	5532.662335
53	-150590.883	-38935.095	3350.401795	3263.905190
10	-150590.787	-38933.658	3186.169765	3058.940014
			22632.483301	23047.717430
			平均イロセキ=	415.234129
			スロセキ=	207.617064

4 スロキリ

元NO. X _o Y _o	X	Y	(X-X _o) (YN-1-Y _o)	(XN-1-X _o) (Y-Y _o)
4	-150653.060	-38930.050		
50	-150652.723	-38927.068	1584.326150	1436.228080
51	-150650.079	-38930.388	1355.538372	1602.146524
4	-150653.060	-38930.050	1612.387280	1504.873950
			4532.251802	4543.248554
			平均イロセキ=	9.003248
			スロセキ=	4.501624

1 スロキリ

元NO. X _o Y _o	X	Y	(X-X _o) (YN-1-Y _o)	(XN-1-X _o) (Y-Y _o)
1	-150591.015	-38937.090		
52	-150593.002	-38936.865	3449.444180	3355.267975
53	-150590.883	-38935.095	3350.401795	3263.905190
1	-150591.015	-38937.090	3194.171425	3370.850470
			9994.017400	9990.023635
			平均イロセキ=	3.993765
			スロセキ=	1.996882

***** MENSEKI KEISAN *****

TENMEI	X	Y	(X-X0)*(YN-1-Y0)	(XN-1-X0)*(Y-Y0)
OS142-6	- 150585.887	- 38830.011	+ 2760.494067	+ 2521.644264
OS142-2	- 150583.891	- 38830.145	+ 2517.652801	+ 2589.063615
			+ 7811.050348	+ 7807.048510
		BAI MENSEKI =	4.001838	
		MENSEKI =	2.000919	

3 次刊

TENMEI	X	Y	(X-X0)*(YN-1-Y0)	(XN-1-X0)*(Y-Y0)
X0.Y0	- 150600.000	- 38800.000		
OS142-3	- 150641.351	- 38826.296		
OS142-7	- 150638.358	- 38826.497	+ 1008.661968	+ 1095.677447
OS142-8	- 150641.687	- 38829.277	+ 1104.580439	+ 1123.007166
OS142-3	- 150641.351	- 38826.296	+ 1210.633227	+ 1096.201352
			+ 3323.875634	+ 3314.885965
		BAI MENSEKI =	8.989669	
		MENSEKI =	4.494834	

7 LOT

元NO. X _o Y _o	X	Y	(X-X _o) (YN-1-Y _o)	(XN-1-X _o) (Y-Y _o)
36	-150500.000	-38900.000		
28	-150601.575	-38902.934		
26	-150614.534	-38901.475	336.042756	149.823125
11	-150615.152	-38907.007	169.849200	802.539738
12	-150589.206	-38909.928	625.066442	1143.229056
35	-150589.073	-38907.929	884.316744	707.314374
36	-150601.975	-38906.482	808.559775	577.371186
36	-150601.575	-38902.934	658.409150	299.194650
			3482.244067	3679.472129
			平均イタセキ=	197.226062
			ズレキ=	98.614031

8 LOT

元NO. X _o Y _o	X	Y	(X-X _o) (YN-1-Y _o)	(XN-1-X _o) (Y-Y _o)
13	-150500.000	-38900.000		
36	-150588.836	-38904.369		
35	-150601.575	-38902.934	443.781175	260.644824
12	-150601.975	-38906.482	299.194650	658.409150
13	-150589.073	-38907.929	577.371186	808.559775
13	-150588.836	-38904.369	704.380644	389.159937
			2024.727655	2116.773686
			平均イタセキ=	92.046031
			ズレキ=	46.023015

9 LOT

元NO. X _o Y _o	X	Y	(X-X _o) (YN-1-Y _o)	(XN-1-X _o) (Y-Y _o)
15	-150500.000	-38800.000		
30	-150588.462	-38898.756		
28	-150613.916	-38895.945	11249.888496	8487.486590
13	-150614.534	-38901.475	10988.964630	11559.626100
15	-150588.836	-38904.369	9014.633100	11953.799046
15	-150588.462	-38898.756	9232.690478	8773.088016
			40486.176704	40773.999752
			平均イタセキ=	287.823048
			ズレキ=	143.911524

25.414

2.811

25.414

2.811

0.618 0.33

10 LOT

元NO. X ₀ Y ₀	X	Y	(X-X ₀)(Y _{N-1} -Y ₀)	(X _{N-1} -X ₀)(Y-Y ₀)
	-150500.000	-38800.000		
14	-150588.372	-38897.411		
29	-150613.766	-38894.606	11082.059826	8360.521432
30	-150613.916	-38895.945	10777.137096	10915.278870
15	-150588.462	-38898.756	8487.486590	11249.888496
14	-150588.372	-38897.411	8727.265232	8617.171882
			39073.948744	39142.860680
			平均偏差=	68.911936
			偏差=	34.455968

11 LOT

元NO. X ₀ Y ₀	X	Y	(X-X ₀)(Y _{N-1} -Y ₀)	(X _{N-1} -X ₀)(Y-Y ₀)
	-150500.000	-38800.000		
16	-150588.171	-38894.400		
38	-150602.507	-38892.817	9676.660800	8183.767707
37	-150602.849	-38895.812	9546.135633	9821.400684
14	-150588.372	-38897.411	8467.098064	10018.623939
16	-150588.171	-38894.400	8588.825281	8342.316800
			36278.719778	36366.109130
			平均偏差=	87.389352
			偏差=	43.694676

12 LOT

元NO. X ₀ Y ₀	X	Y	(X-X ₀)(Y _{N-1} -Y ₀)	(X _{N-1} -X ₀)(Y-Y ₀)
	-150500.000	-38800.000		
17	-150588.090	-38893.181		
39	-150602.369	-38891.605	9538.845789	8069.484450
38	-150602.507	-38892.817	9390.153735	9501.583473
16	-150588.171	-38894.400	8183.767707	9676.660800
17	-150588.090	-38893.181	8315.696000	8215.861951
			35428.463231	35463.590674
			平均偏差=	35.127443
			偏差=	17.563721

13 LOT

元NO. X ₀ Y ₀	X	Y	(X-X ₀)(Y _{N-1} -Y ₀)	(X _{N-1} -X ₀)(Y-Y ₀)
	-150500.000	-38800.000		

18	-150587.569	-38885.363		
40	-150601.481	-38883.815	8662.722603	7339.595735
39	-150602.369	-38891.605	8580.057735	9296.167005
17	-150588.090	-38893.181	8069.484450	9538.845789
18	-150587.569	-38885.363	8159.766989	7519.626670

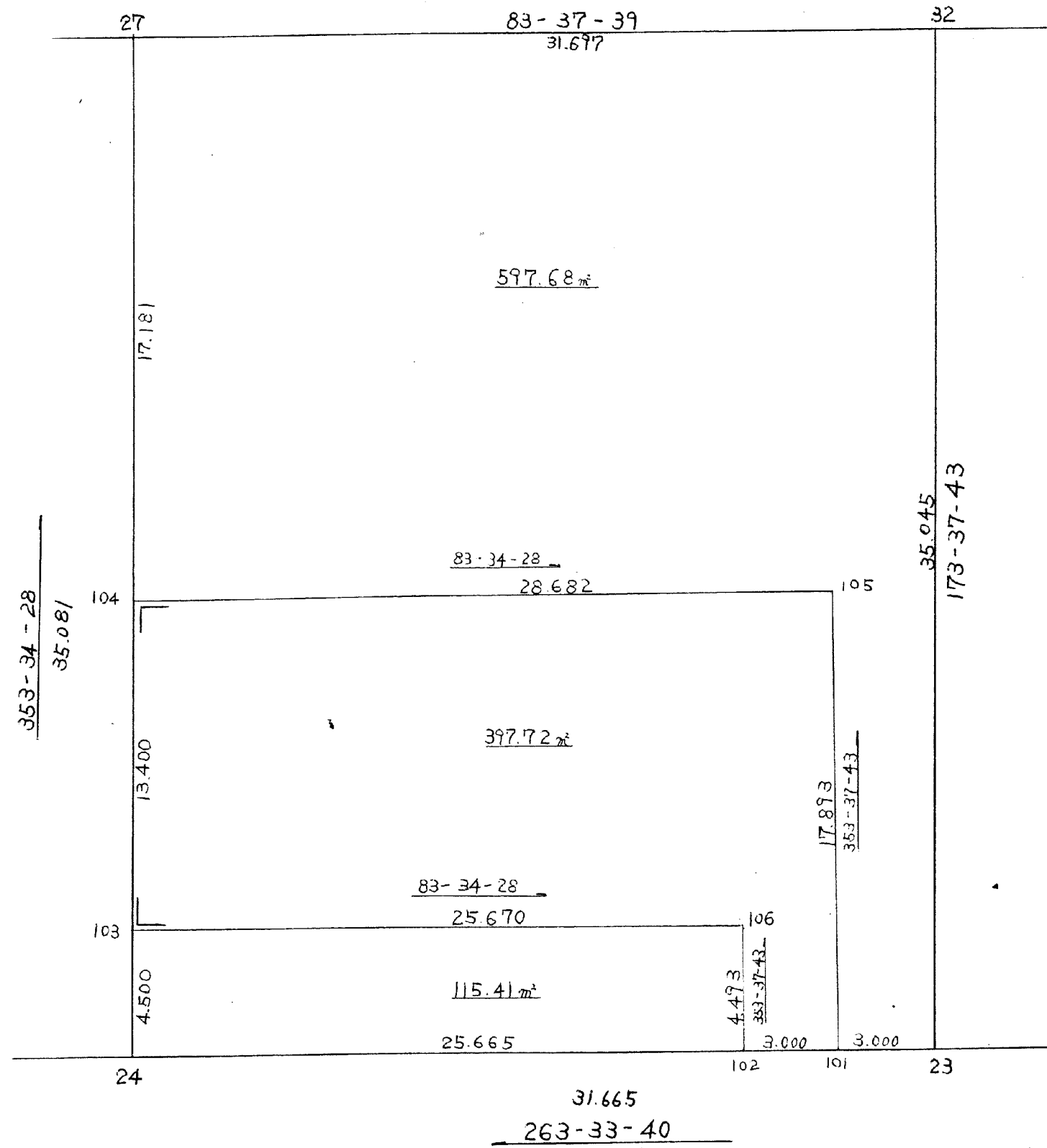
	33472.031777	33694.235199
	平均値=	222.203422
	分散=	111.101711

14 LOT

元NO. X ₀ Y ₀	X	Y	(X-X ₀)(Y _{N-1} -Y ₀)	(X _{N-1} -X ₀)(Y-Y ₀)
	-150500.000	-38800.000		
19	-150587.436	-38883.367		
31	-150612.203	-38880.609	9354.027501	7048.128524
29	-150613.766	-38894.606	9170.563494	10615.077018
37	-150602.849	-38895.812	9730.132494	10900.147992
40	-150601.481	-38883.815	9723.097572	8620.288735
18	-150587.569	-38885.363	7339.595735	8662.722603
19	-150587.436	-38883.367	7463.799268	7300.364823

	52781.216064	53146.729895
	平均値=	365.513831
	分散=	182.756915

142 BLOCK



1 LOT

POINT NO. X, Y	X	Y	(X-X ₀) (Y-Y ₀)	(XN-1-X ₀) (Y-Y ₀)
	-150600.000	-38800.000		
27	-150614.908	-38904.823		
32	-150611.390	-38873.321	1193.933970	1093.069468
23	-150646.218	-38869.432	3388.749978	790.830480
101	-150646.554	-38872.413	3232.337328	3346.784034
105	-150628.772	-38874.399	2083.466836	3463.571046
104	-150631.981	-38902.900	2379.354419	2960.638800
27	-150614.908	-38904.823	1534.033200	3352.344363
			13811.875731	15007.238191
			平均イメジシキ=	1195.362460
			ズレシキ=	597.681230

2 LOT

POINT NO. X, Y	X	Y	(X-X ₀) (Y-Y ₀)	(XN-1-X ₀) (Y-Y ₀)
	-150600.000	-38800.000		
104	-150631.981	-38902.900		
105	-150628.772	-38874.399	2960.638800	2379.354419
101	-150646.554	-38872.413	3463.571046	2083.466836
102	-150646.890	-38875.394	3395.445570	3509.892276
106	-150642.425	-38875.893	3198.590450	3558.622770
103	-150645.297	-38901.401	3437.725221	4301.937425
104	-150631.981	-38902.900	3242.905381	4661.061300
			19698.876468	20494.335026
			平均イメジシキ=	795.458558
			ズレシキ=	397.729279

3 LOT

POINT NO. X, Y	X	Y	(X-X ₀) (Y-Y ₀)	(XN-1-X ₀) (Y-Y ₀)
	-150600.000	-38800.000		
103	-150645.297	-38901.401		
106	-150642.425	-38875.893	4301.937425	3437.725221
102	-150646.890	-38875.394	3558.622770	3198.590450
24	-150649.769	-38900.897	3752.283986	4731.060330
103	-150645.297	-38901.401	4570.331409	5046.626369
			16183.175590	16414.002370
			平均イメジシキ=	230.826780
			ズレシキ=	115.413390