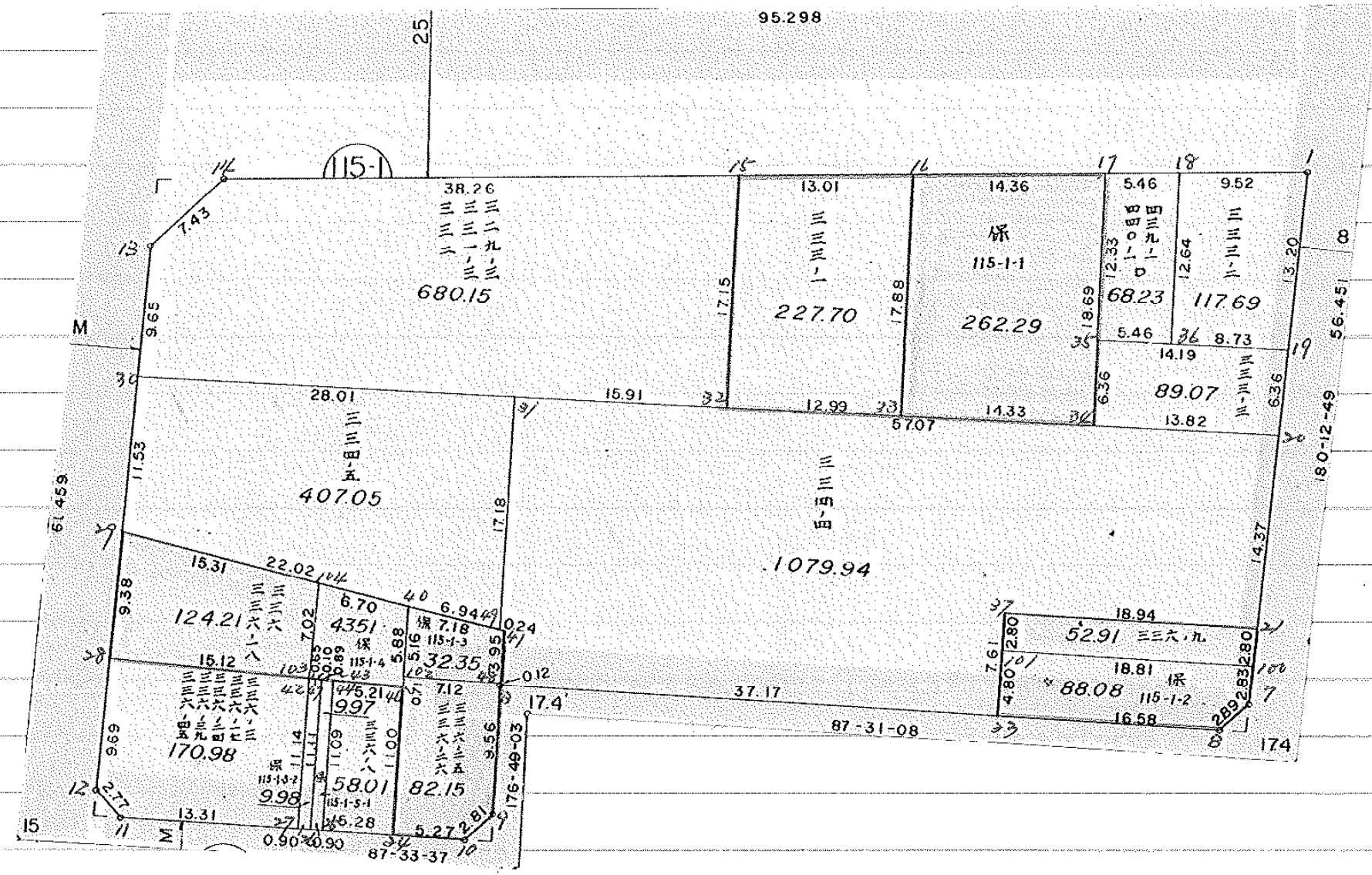


面地確定計算書

BLOCK NO. 115-1

确定以后变更

保留地变更 556.12



\* \* \* \* \* KAKUHITSU MENSEKI KESAN-SHO \* \* \* \* \*

BLOCK . LOT	KAKUHITSU MENSEKI	SUMIKIRI .SUIRO MENSEKI
115-1 BLOCK	3604.274502	
1 LOT	117.698012	
2 LOT	89.073961	
3 LOT	1079.947247	
4 LOT	52.861641	
5 LOT	88.136935	
6 LOT	82.096560	
7 LOT	58.010785	
8 LOT	9.971415	
9 LOT	9.988374	
10 LOT	170.988465	
11 LOT	123.293850	
12 LOT	44.439883	
13 LOT	32.412433	
14 LOT	407.055101	
15 LOT	680.154231	
16 LOT	227.702914	
17 LOT	262.290975	
18 LOT	68.233970	
2 入三ヶ刈		1.997695
4 入三ヶ刈		1.999720
5 入三ヶ刈		1.998425
6 入三ヶ刈		12.429184
TOTAL =	3604.356752	18.425024

\*\*\*\*\* MENSEKI KEISAN \*\*\*\*\*

115-1 BLOCK

TENMEI	X	Y	(X-X0)*(YN-1-Y0)	(XN-1-X0)*(Y-Y0)
X0.Y0	- 150300.000	- 38900.000		
01151-1	- 150310.624	- 38951.648		
01151-7	- 150350.213	- 38951.796	+ 2593.401024	+ 550.280704
01151-8	- 150352.300	- 38953.801	+ 2708.930800	+ 2701.509613
01151-3	- 150354.626	- 39007.505	+ 2938.933426	+ 5622.511500
01151-9	- 150364.172	- 39006.974	+ 6898.810860	+ 5843.561724
01151-10	- 150366.254	- 39008.861	+ 7087.455396	+ 6985.828092
01151-11	- 150367.347	- 39034.523	+ 7331.461767	+ 8912.686842
01151-12	- 150365.432	- 39036.531	+ 8802.108936	+ 9194.953257
01151-13	- 150325.164	- 39036.722	+ 3435.666084	+ 8945.993904
01151-14	- 150319.607	- 39031.777	+ 2680.708254	+ 3316.036428
01151-1	- 150310.624	- 38951.648	+ 1399.998848	+ 1012.662336
			+ 45877.475395	+ 53086.024400
		BAI MENSEKI =	7208.549005	
		MENSEKI =	3604.274502	

1 LOT

TENMEI	X	Y	(X-X0)*(YN-1-Y0)	(XN-1-X0)*(Y-Y0)
X0.Y0	- 150300.000	- 38900.000		
01151-18	- 150311.684	- 38961.114		
01151-1	- 150310.624	- 38951.648	+ 649.275136	+ 603.455232
01151-19	- 150323.830	- 38951.697	+ 1230.771840	+ 549.228928
01151-36	- 150324.312	- 38960.416	+ 1256.857464	+ 1439.713280
01151-18	- 150311.684	- 38961.114	+ 705.900544	+ 1485.803568
			+ 3842.804984	+ 4078.201008
		BAI MENSEKI =	235.396024	
		MENSEKI =	117.698012	

2 LOT

TENMEI	X	Y	(X-X0)*(YN-1-Y0)	(XN-1-X0)*(Y-Y0)
X0.Y0	- 150300.000	- 38900.000		
01151-35	- 150324.613	- 38965.871		
01151-36	- 150324.312	- 38960.416	+ 1601.455752	+ 1487.019008
01151-19	- 150323.830	- 38951.697	+ 1439.713280	+ 1256.857464
01151-20	- 150330.199	- 38951.721	+ 1561.197703	+ 1232.511430
01151-34	- 150330.963	- 38965.521	+ 1601.437323	+ 1978.668679
01151-35	- 150324.613	- 38965.871	+ 1612.668373	+ 2039.563773
			+ 7816.472431	+ 7994.620354
		BAI MENSEKI =	178.147923	
		MENSEKI =	89.073961	

\*\*\*\*\* MENSEKI KEISAN \*\*\*\*\*

3 LOT

TENMEI	X	Y	(X-X0)*(YN-1-Y0)	(XN-1-X0)*(Y-Y0)
X0.Y0	- 150300.000	- 38900.000		
01151-31	- 150333.353	- 39008.704		
01151-32	- 150332.474	- 38992.812	+ 3530.053696	+ 3095.558636
01151-33	- 150331.755	- 38979.834	+ 2947.245060	+ 2592.529316
01151-34	- 150330.963	- 38965.521	+ 2471.900142	+ 2080.619355
01151-20	- 150330.199	- 38951.721	+ 1978.668679	+ 1601.437323
01151-21	- 150344.573	- 38951.775	+ 2305.360133	+ 1563.553225
01151-37	- 150345.415	- 38970.700	+ 2351.361625	+ 3151.311100
01151-38	- 150348.213	- 38970.578	+ 3408.659100	+ 3205.299870
01151-23	- 150353.018	- 38970.369	+ 3741.904404	+ 3392.700597
01151-3	- 150354.626	- 39007.505	+ 3843.976994	+ 5699.700090
01151-48	- 150354.504	- 39007.504	+ 5859.452520	+ 5872.513504
01151-41	- 150350.557	- 39007.720	+ 5435.079728	+ 5871.170880
01151-49	- 150350.524	- 39007.966	+ 5442.445280	+ 5458.437062
01151-31	- 150333.353	- 39008.704	+ 3600.989998	+ 5492.160896
			+ 46917.097359	+ 49076.991854
		BAI MENSEKI =	2159.894495	
		MENSEKI =	1079.947247	

4 LOT

TENMEI	X	Y	(X-X0)*(YN-1-Y0)	(XN-1-X0)*(Y-Y0)
X0.Y0	- 150300.000	- 38900.000		
01151-37	- 150345.415	- 38970.700		
01151-21	- 150344.573	- 38951.775	+ 3151.311100	+ 2351.361625
01151-22	- 150347.376	- 38951.785	+ 2452.892400	+ 2308.212805
01151-38	- 150348.213	- 38970.578	+ 2496.710205	+ 3343.703328
01151-37	- 150345.415	- 38970.700	+ 3205.299870	+ 3408.659100
			+ 11306.213575	+ 11411.936858
		BAI MENSEKI =	105.723283	
		MENSEKI =	52.861641	

5 LOT

TENMEI	X	Y	(X-X0)*(YN-1-Y0)	(XN-1-X0)*(Y-Y0)
X0.Y0	- 150300.000	- 38900.000		
01151-38	- 150348.213	- 38970.578		
01151-22	- 150347.376	- 38951.785	+ 3343.703328	+ 2496.710205
01151-7	- 150350.213	- 38951.796	+ 2600.280205	+ 2453.887296
01151-8	- 150352.300	- 38953.801	+ 2708.930800	+ 2701.509613
01151-23	- 150353.018	- 38970.369	+ 2852.421418	+ 3680.298700
01151-38	- 150348.213	- 38970.578	+ 3392.700597	+ 3741.904404
			+ 14898.036348	+ 15074.310218
		BAI MENSEKI =	176.273870	
		MENSEKI =	88.136935	

\* \* \* \* \* M E N S E K I K E I S A N \* \* \* \* \*

6 LOT

TENMEI	X	Y	(X-X0)*(YN-1-Y0)	(XN-1-X0)*(Y-Y0)
X0.Y0	- 150300.000	- 39000.000		
01151-45	- 150354.787	- 39014.621		
01151-48	- 150354.504	- 39007.504	+ 796.902984	+ 411.121648
01151-3	- 150354.626	- 39007.505	+ 409.913504	+ 409.052520
01151-9	- 150364.172	- 39006.974	+ 481.610860	+ 380.961724
01151-10	- 150366.254	- 39008.861	+ 462.055396	+ 568.628092
01151-24	- 150366.478	- 39014.127	+ 589.061558	+ 935.970258
01151-46	- 150355.482	- 39014.592	+ 783.794214	+ 970.046976
01151-45	- 150354.787	- 39014.621	+ 799.451904	+ 811.202322
			+ 4322.790420	+ 4486.983540
		BAI MENSEKI =	164.193120	
		MENSEKI =	82.096560	

7 LOT

TENMEI	X	Y	(X-X0)*(YN-1-Y0)	(XN-1-X0)*(Y-Y0)
X0.Y0	- 150300.000	- 39000.000		
01151-44	- 150355.614	- 39019.801		
01151-46	- 150355.482	- 39014.592	+ 1098.599082	+ 811.519488
01151-24	- 150366.478	- 39014.127	+ 970.046976	+ 783.794214
01151-25	- 150366.703	- 39019.411	+ 942.313281	+ 1290.404458
01151-44	- 150355.614	- 39019.801	+ 1079.523354	+ 1320.786103
			+ 4090.482693	+ 4206.504263
		BAI MENSEKI =	116.021570	
		MENSEKI =	58.010785	

8 LOT

TENMEI	X	Y	(X-X0)*(YN-1-Y0)	(XN-1-X0)*(Y-Y0)
X0.Y0	- 150300.000	- 39000.000		
01151-43	- 150355.637	- 39020.691		
01151-44	- 150355.614	- 39019.801	+ 1150.709274	+ 1101.668237
01151-25	- 150366.703	- 39019.411	+ 1320.786103	+ 1079.523354
01151-26	- 150366.742	- 39020.316	+ 1295.528962	+ 1355.138148
01151-43	- 150355.637	- 39020.691	+ 1130.321292	+ 1380.958722
			+ 4897.345631	+ 4917.288461
		BAI MENSEKI =	19.942830	
		MENSEKI =	9.971415	

9 LOT

TENMEI	X	Y	(X-X0)*(YN-1-Y0)	(XN-1-X0)*(Y-Y0)
X0.Y0	- 150300.000	- 39000.000		
01151-42	- 150355.645	- 39021.581		
01151-47	- 150355.640	- 39020.797	+ 1200.766840	+ 1157.249065

\*\*\*\*\* MENSEKI KEISAN \*\*\*\*\*

TENMEI	X	Y	(X-X0)*(YN-1-Y0)	(XN-1-X0)*(Y-Y0)
01151-43	- 150355.637	- 39020.691	+ 1157.082689	+ 1151.247240
01151-26	- 150366.742	- 39020.316	+ 1380.958722	+ 1130.321292
01151-27	- 150366.781	- 39021.221	+ 1356.722796	+ 1416.331982
01151-42	- 150355.645	- 39021.581	+ 1180.842545	+ 1441.200761
			+ 6276.373592	+ 6296.350340
		BAI MENSEKI =	19.976748	
		MENSEKI =	9.988374	

10 LOT

TENMEI	X	Y	(X-X0)*(YN-1-Y0)	(XN-1-X0)*(Y-Y0)
X0.Y0	- 150300.000	- 39000.000		
01151-28	- 150355.739	- 39036.577		
01151-42	- 150355.645	- 39021.581	+ 2035.327165	+ 1202.903359
01151-27	- 150366.781	- 39021.221	+ 1441.200761	+ 1180.842545
01151-11	- 150367.347	- 39034.523	+ 1429.170687	+ 2305.480463
01151-12	- 150365.432	- 39036.531	+ 2258.908936	+ 2460.253257
01151-28	- 150355.739	- 39036.577	+ 2036.201409	+ 2393.306264
			+ 9200.808958	+ 9542.785888
		BAI MENSEKI =	341.976930	
		MENSEKI =	170.988465	

11 LOT

TENMEI	X	Y	(X-X0)*(YN-1-Y0)	(XN-1-X0)*(Y-Y0)
X0.Y0	- 150300.000	- 39000.000		
01151-29	- 150346.352	- 39036.622		
01151-39	- 150348.595	- 39021.605	+ 1779.646090	+ 1001.434960
01151-42	- 150355.645	- 39021.581	+ 1202.210225	+ 1048.728695
01151-28	- 150355.739	- 39036.577	+ 1202.903359	+ 2035.327165
01151-29	- 150346.352	- 39036.622	+ 1695.417104	+ 2041.273658
			+ 5880.176778	+ 6126.764478
		BAI MENSEKI =	246.587700	
		MENSEKI =	123.293850	

12 LOT

TENMEI	X	Y	(X-X0)*(YN-1-Y0)	(XN-1-X0)*(Y-Y0)
X0.Y0	- 150300.000	- 39000.000		
01151-39	- 150348.595	- 39021.605		
01151-40	- 150349.606	- 39014.838	+ 1071.737630	+ 721.052610
01151-45	- 150354.787	- 39014.621	+ 812.929506	+ 725.289326
01151-46	- 150355.482	- 39014.592	+ 811.202322	+ 799.451904
01151-44	- 150355.614	- 39019.801	+ 811.519488	+ 1098.599082
01151-43	- 150355.637	- 39020.691	+ 1101.668237	+ 1150.709274

\*\*\*\*\* MENSEKI KEISAN \*\*\*\*\*

TENMEI	X	Y	(X-X0)*(YN-1-Y0)	(XN-1-X0)*(Y-Y0)
01151-47	- 150355.640	- 39020.797	+ 1151.247240	+ 1157.082689
01151-42	- 150355.645	- 39021.581	+ 1157.249065	+ 1200.766840
01151-39	- 150348.595	- 39021.605	+ 1048.728695	+ 1202.210225
			+ 7966.282183	+ 8055.161950
		BAI MENSEKI =	88.879767	
		MENSEKI =	44.439883	

13 LOT

TENMEI	X	Y	(X-X0)*(YN-1-Y0)	(XN-1-X0)*(Y-Y0)
X0.Y0	- 150300.000	- 39000.000		
01151-40	- 150349.606	- 39014.838		
01151-49	- 150350.524	- 39007.966	+ 749.675112	+ 395.161396
01151-41	- 150350.557	- 39007.720	+ 402.737062	+ 390.045280
01151-48	- 150354.504	- 39007.504	+ 420.770880	+ 379.379728
01151-45	- 150354.787	- 39014.621	+ 411.121648	+ 796.902984
01151-40	- 150349.606	- 39014.838	+ 725.289326	+ 812.929506
			+ 2709.594028	+ 2774.418894
		BAI MENSEKI =	64.824866	
		MENSEKI =	32.412433	

14 LOT

TENMEI	X	Y	(X-X0)*(YN-1-Y0)	(XN-1-X0)*(Y-Y0)
X0.Y0	- 150300.000	- 39000.000		
01151-30	- 150334.816	- 39036.677		
01151-31	- 150333.353	- 39008.704	+ 1223.287981	+ 303.038464
01151-49	- 150350.524	- 39007.966	+ 439.760896	+ 265.689998
01151-40	- 150349.606	- 39014.838	+ 395.161396	+ 749.675112
01151-39	- 150348.595	- 39021.605	+ 721.052610	+ 1071.737630
01151-29	- 150346.352	- 39036.622	+ 1001.434960	+ 1779.646090
01151-30	- 150334.816	- 39036.677	+ 1275.031552	+ 1700.052304
			+ 5055.729395	+ 5869.839598
		BAI MENSEKI =	814.110203	
		MENSEKI =	407.055101	

15 LOT

TENMEI	X	Y	(X-X0)*(YN-1-Y0)	(XN-1-X0)*(Y-Y0)
X0.Y0	- 150300.000	- 38900.000		
01151-14	- 150319.607	- 39031.777		
01151-15	- 150315.344	- 38993.756	+ 2021.986288	+ 1838.273892
01151-32	- 150332.474	- 38992.812	+ 3044.632344	+ 1424.107328
01151-31	- 150333.353	- 39008.704	+ 3095.558636	+ 3530.053696
01151-30	- 150334.816	- 39036.677	+ 3784.638464	+ 4558.587981



\*\*\*\*\* MENSEKI KEISAN \*\*\*\*\*

TENMEI	X	Y	(X-X0)*(YN-1-Y0)	(XN-1-X0)*(Y-Y0)
01151-13	- 150325.164	- 39036.722	+ 3439.34028	+ 4760.113152
01151-14	- 150319.607	- 39031.777	+ 2680.708254	+ 3316.036428
			+ 18066.864014	+ 19427.172477
		BAI MENSEKI =	1360.308463	
		MENSEKI =	680.154231	

16 LOT

TENMEI	X	Y	(X-X0)*(YN-1-Y0)	(XN-1-X0)*(Y-Y0)
X0.Y0	- 150300.000	- 38900.000		
01151-15	- 150315.344	- 38993.756		
01151-16	- 150313.894	- 38980.824	+ 1302.645864	+ 1240.163456
01151-33	- 150331.755	- 38979.834	+ 2566.566120	+ 1109.213596
01151-32	- 150332.474	- 38992.812	+ 2592.529316	+ 2947.245060
01151-15	- 150315.344	- 38993.756	+ 1424.107328	+ 3044.632344
			+ 7885.848628	+ 8341.254456
		BAI MENSEKI =	455.405828	
		MENSEKI =	227.702914	

17 LOT

TENMEI	X	Y	(X-X0)*(YN-1-Y0)	(XN-1-X0)*(Y-Y0)
X0.Y0	- 150300.000	- 38900.000		
01151-16	- 150313.894	- 38980.824		
01151-17	- 150312.293	- 38966.549	+ 993.569432	+ 924.631806
01151-35	- 150324.613	- 38965.871	+ 1637.970537	+ 809.752203
01151-34	- 150330.963	- 38965.521	+ 2039.563773	+ 1612.668373
01151-33	- 150331.755	- 38979.834	+ 2080.619355	+ 2471.900142
01151-16	- 150313.894	- 38980.824	+ 1109.213596	+ 2566.566120
			+ 7860.936693	+ 8385.518644
		BAI MENSEKI =	524.581951	
		MENSEKI =	262.290975	

18 LOT

TENMEI	X	Y	(X-X0)*(YN-1-Y0)	(XN-1-X0)*(Y-Y0)
X0.Y0	- 150300.000	- 38900.000		
01151-17	- 150312.293	- 38966.549		
01151-18	- 150311.684	- 38961.114	+ 777.558516	+ 751.274402
01151-36	- 150324.312	- 38960.416	+ 1485.803568	+ 705.900544
01151-35	- 150324.613	- 38965.871	+ 1487.019008	+ 1601.455752
01151-17	- 150312.293	- 38966.549	+ 809.752203	+ 1637.970537
			+ 4560.133295	+ 4696.601235
		BAI MENSEKI =	136.467940	
		MENSEKI =	68.233970	

\* \* \* \* \* M E N S E K I K E I S A N \* \* \* \* \*

2 入三キリ

TENMEI	X	Y	(X-X0)*(YN-1-Y0)	(XN-1-X0)*(Y-Y0)
X0.Y0	- 150300.000	- 38900.000		
01151-2	- 150352.213	- 38951.803		
01151-7	- 150350.213	- 38951.796	+ 2601.184039	+ 2704.424548
01151-8	- 150352.300	- 38953.801	+ 2708.930800	+ 2701.509613
01151-2	- 150352.213	- 38951.803	+ 2809.111613	+ 2709.296900
			+ 8119.226452	+ 8115.231061
		BAI MENSEKI =	3.995391	
		MENSEKI =	1.997695	

4 入三キリ

TENMEI	X	Y	(X-X0)*(YN-1-Y0)	(XN-1-X0)*(Y-Y0)
X0.Y0	- 150300.000	- 39000.000		
01151-4	- 150366.169	- 39006.863		
01151-9	- 150364.172	- 39006.974	+ 440.412436	+ 461.462606
01151-10	- 150366.254	- 39008.861	+ 462.055396	+ 568.628092
01151-4	- 150366.169	- 39006.863	+ 586.323509	+ 454.701202
			+ 1488.791341	+ 1484.791900
		BAI MENSEKI =	3.999441	
		MENSEKI =	1.999720	

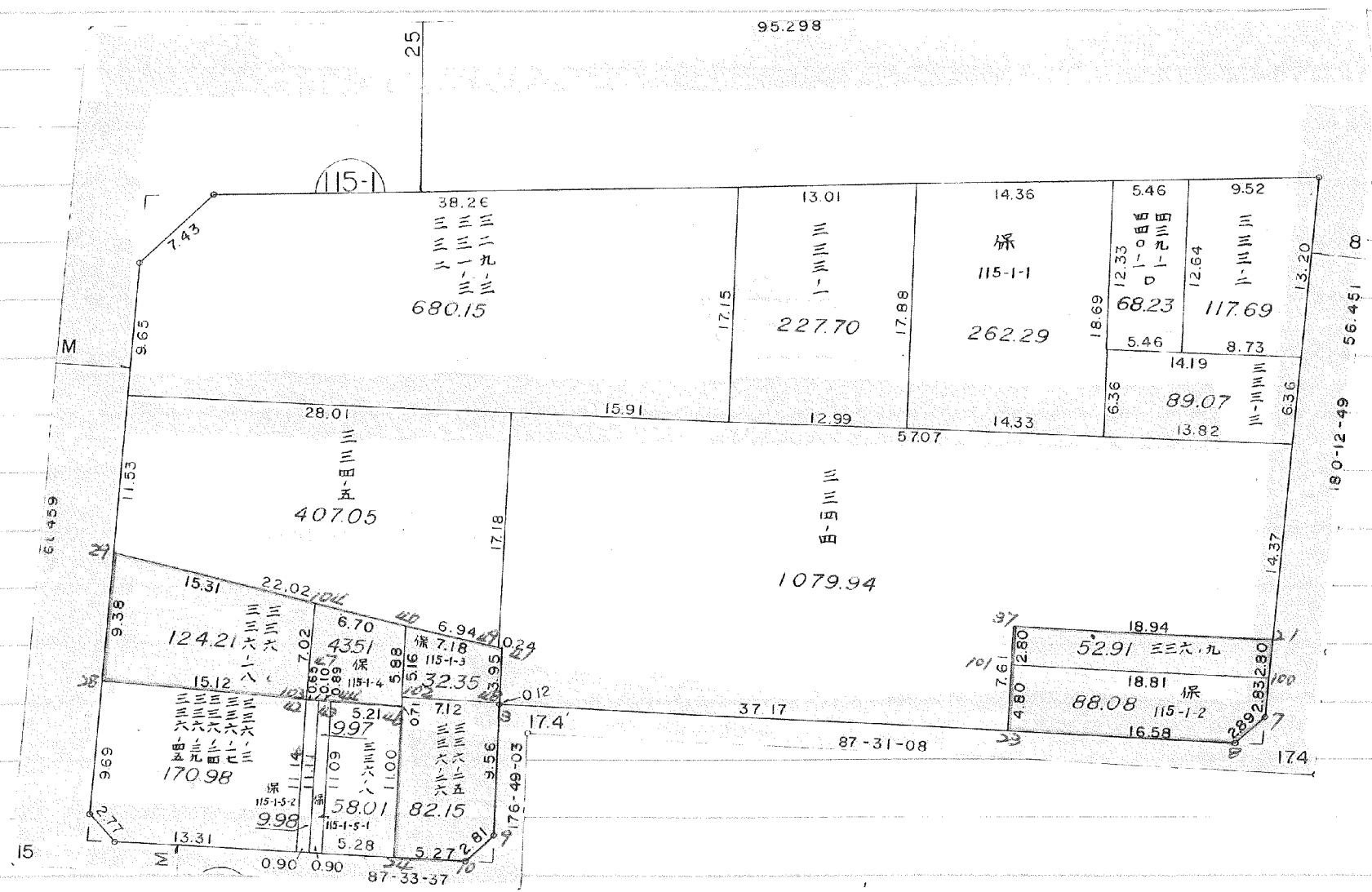
5 入三キリ

TENMEI	X	Y	(X-X0)*(YN-1-Y0)	(XN-1-X0)*(Y-Y0)
X0.Y0	- 150300.000	- 39000.000		
01151-5	- 150367.432	- 39036.521		
01151-11	- 150367.347	- 39034.523	+ 2489.579787	+ 2327.954936
01151-12	- 150365.432	- 39036.531	+ 2258.908936	+ 2460.253257
01151-5	- 150367.432	- 39036.521	+ 2463.358392	+ 2389.642072
			+ 7184.847115	+ 7177.850265
		BAI MENSEKI =	3.996850	
		MENSEKI =	1.998425	

6 入三キリ

TENMEI	X	Y	(X-X0)*(YN-1-Y0)	(XN-1-X0)*(Y-Y0)
X0.Y0	- 150300.000	- 39000.000		
01151-6	- 150320.164	- 39036.746		
01151-13	- 150325.164	- 39036.722	+ 924.676344	+ 740.462408
01151-14	- 150319.607	- 39031.777	+ 720.008254	+ 799.636428
01151-6	- 150320.164	- 39036.746	+ 640.751428	+ 720.478822
			+ 2285.436026	+ 2260.577658
		BAI MENSEKI =	24.858368	
		MENSEKI =	12.429184	

确定以後変更



4 LOT

元NO. X <sub>o</sub> Y <sub>o</sub>	X	Y	(X-X <sub>o</sub> )(Y <sub>N-1</sub> -Y <sub>o</sub> )	(X <sub>N-1</sub> -X <sub>o</sub> )(Y-Y <sub>o</sub> )
21	-150300.000	-38900.000		
100	-150344.573	-38951.775		
101	-150347.379	-38951.785	2453.047725	2308.212805
37	-150348.216	-38970.578	2496.865560	3343.915062
21	-150345.415	-38970.700	3205.299870	3408.871200
21	-150344.573	-38951.775	3151.311100	2351.361625
			11306.524255	11412.360692
			平均値=	105.836437
			標準値=	52.918218

5 LOT

元NO. X <sub>o</sub> Y <sub>o</sub>	X	Y	(X-X <sub>o</sub> )(Y <sub>N-1</sub> -Y <sub>o</sub> )	(X <sub>N-1</sub> -X <sub>o</sub> )(Y-Y <sub>o</sub> )
100	-150300.000	-38900.000		
7	-150347.379	-38951.785		
8	-150350.213	-38951.796	2600.280205	2454.042684
23	-150352.300	-38953.801	2708.930800	2701.509613
101	-150353.018	-38970.369	2852.421418	3680.298700
100	-150348.216	-38970.578	3392.911704	3741.904404
100	-150347.379	-38951.785	3343.915062	2496.865560
			14898.459189	15074.620961
			平均値=	176.161772
			標準値=	88.080886

6 LOT

元NO. X <sub>o</sub> Y <sub>o</sub>	X	Y	(X-X <sub>o</sub> )(Y <sub>N-1</sub> -Y <sub>o</sub> )	(X <sub>N-1</sub> -X <sub>o</sub> )(Y-Y <sub>o</sub> )
48	-150300.000	-39000.000		
3	-150354.504	-39007.504		
9	-150354.626	-39007.505	409.913504	409.052520
10	-150364.172	-39006.974	481.610860	380.961724
24	-150366.254	-39008.861	462.055396	568.628092
46	-150366.478	-39014.127	589.061558	935.970258
102	-150355.482	-39014.592	783.794214	970.046976
48	-150354.770	-39014.622	799.203840	811.257804
48	-150354.504	-39007.504	796.957488	410.994080
			4322.596860	4486.911454
			平均値=	164.314594
			標準値=	82.157297

11 LOT

元NO. X <sub>0</sub> Y <sub>0</sub>	X	Y	(X-X <sub>0</sub> )(Y <sub>N-1</sub> -Y <sub>0</sub> )	(X <sub>N-1</sub> -X <sub>0</sub> )(Y-Y <sub>0</sub> )
	-150300.000	-39000.000		
29	-150346.352	-39036.622		
104	-150348.615	-39021.474	1780.378530	995.362848
103	-150355.644	-39021.450	1194.899256	1042.791750
42	-150355.645	-39021.581	1193.585250	1200.853164
28	-150355.739	-39036.577	1202.903359	2035.327165
29	-150346.352	-39036.622	1695.417104	2041.273658
			7067.183499	7315.608585
			平均偏差=	248.425086
			偏差=	124.212543

12 LOT

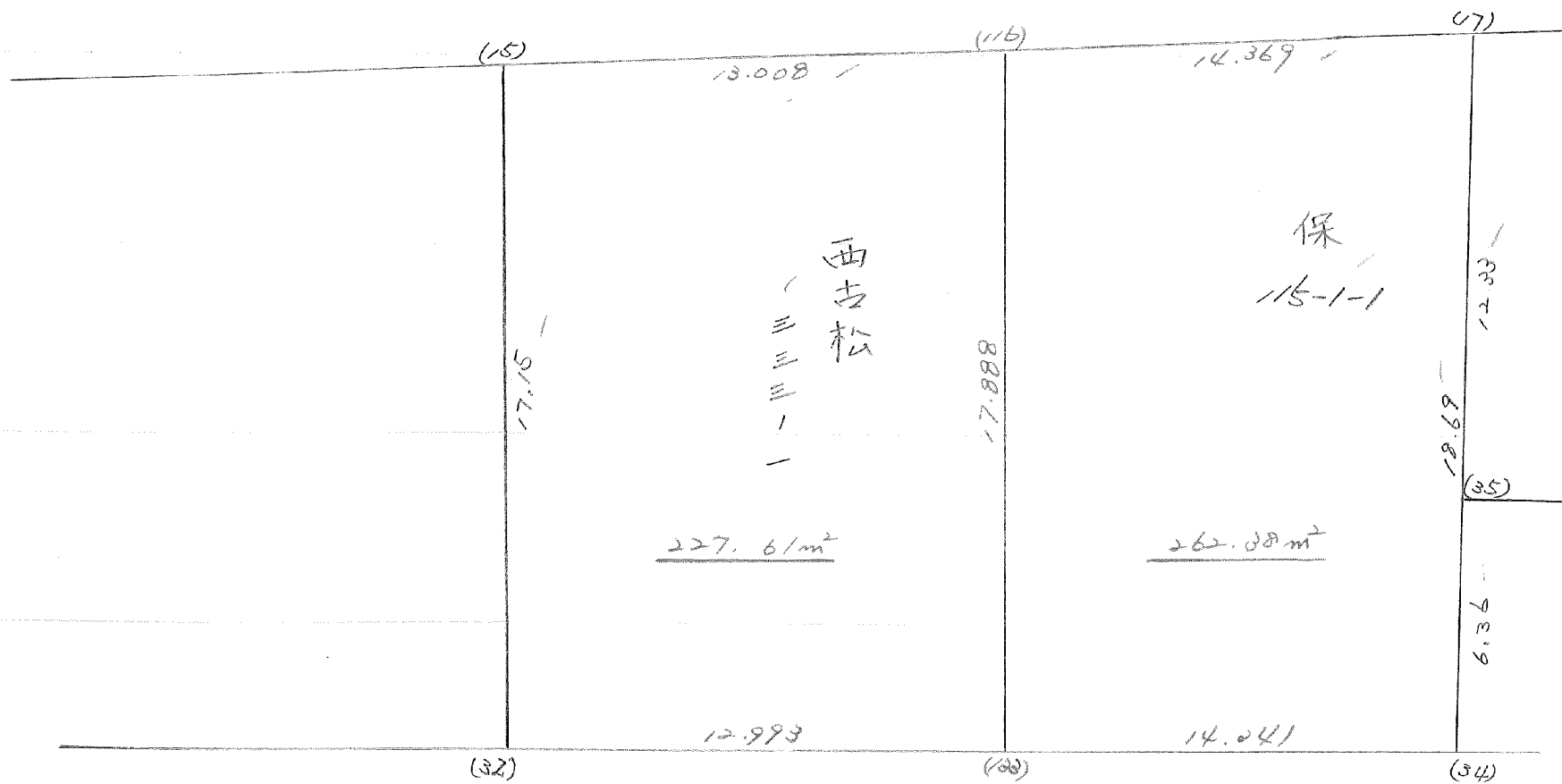
元NO. X <sub>0</sub> Y <sub>0</sub>	X	Y	(X-X <sub>0</sub> )(Y <sub>N-1</sub> -Y <sub>0</sub> )	(X <sub>N-1</sub> -X <sub>0</sub> )(Y-Y <sub>0</sub> )
	-150300.000	-39000.000		
104	-150348.615	-39021.474		
40	-150349.606	-39014.838	1065.239244	721.349370
102	-150354.770	-39014.622	812.677260	725.338932
46	-150355.482	-39014.592	811.257804	799.203840
44	-150355.614	-39019.801	811.519488	1098.599082
43	-150355.637	-39020.691	1101.668237	1150.709274
47	-150355.640	-39020.797	1151.247240	1157.082689
103	-150355.644	-39021.450	1157.228268	1193.478000
104	-150348.615	-39021.474	1042.791750	1194.899256
			7953.629291	8040.660443
			平均偏差=	87.031152
			偏差=	43.515576

13 LOT

元NO. X <sub>0</sub> Y <sub>0</sub>	X	Y	(X-X <sub>0</sub> )(Y <sub>N-1</sub> -Y <sub>0</sub> )	(X <sub>N-1</sub> -X <sub>0</sub> )(Y-Y <sub>0</sub> )
	-150300.000	-39000.000		
41	-150350.557	-39007.720		
48	-150354.504	-39007.504	420.770880	379.379728
102	-150354.770	-39014.622	410.994080	796.957488
40	-150349.606	-39014.838	725.338932	812.677260
49	-150350.524	-39007.966	749.675112	395.161396
41	-150350.557	-39007.720	402.737062	390.045280
			2709.516066	2774.221152
			平均偏差=	64.705086
			偏差=	32.352543

2.56.12.15

115-1 Block



16 LOT

FONNO. X.Y.	X	Y	(X-X <sub>0</sub> )(Y <sub>N-1</sub> -Y <sub>0</sub> )	(X <sub>N-1</sub> -X <sub>0</sub> )(Y-Y <sub>0</sub> )
	-150300.000	-38900.000		
15	-150315.344	-38993.756		
116	-150313.895	-38980.829	1302.739620	1240.240176
133	-150331.756	-38979.839	2566.805724	1109.362905
32	-150332.474	-38992.812	2592.691686	2947.337872
15	-150315.344	-38993.756	1424.107328	3044.632344
			7886.344358	8341.573297
			イノセキ=	455.228939
			ノセキ=	227.614469

(株)115-1-1 LOT

FONNO. X.Y.	X	Y	(X-X <sub>0</sub> )(Y <sub>N-1</sub> -Y <sub>0</sub> )	(X <sub>N-1</sub> -X <sub>0</sub> )(Y-Y <sub>0</sub> )
	-150300.000	-38900.000		
116	-150313.895	-38980.829		
17	-150312.293	-38966.549	993.630897	924.698355
35	-150324.613	-38965.871	1637.970537	809.752203
34	-150330.963	-38965.521	2039.563773	1612.668373
133	-150331.756	-38979.839	2080.684876	2472.054957
116	-150313.895	-38980.829	1109.362905	2566.805724
			7861.212988	8385.979612
			イノセキ=	524.766624
			ノセキ=	262.383312