

画地確定計算書

BLOCK NO. 90

* * * * * KAKUHITSU MENSEKI KESAN-SHO * * * * *

BLOCK . . . LOT KAKUHITSU MENSEKI SUMIKIRI .SUIRO MENSEKI

90 BLOCK 6207.109016

1 LOT 318.458013 *318.995910*
2 LOT 257.890675
3 LOT 821.678940
4 LOT 704.242156
5 LOT 148.385958
6 LOT 500.711093
7 LOT 133.159817 *96.847884*
8 LOT 96.152549 *132.460153*
9 LOT 96.116213
10 LOT 515.895472
11 LOT 2551.459369 *2550.829918*
入口 63.002338

1 入三才 2.000023
2 入三才 1.995505
3 入三才 4.479600
4 入三才 4.496473

TOTAL = 6207.152593 12.971601

90 BLOCK

TENMEI	X	Y	(X-X0)*(YN-1-Y0)	(XN-1-X0)*(Y-Y0)
X0.Y0	- 150000.000	- 38900.000		
OS90-5	- 150041.031	- 38949.007		
OS90-6	- 150042.937	- 38946.944	+ 2104.213559	+ 1926.159264
OS90-7	- 150104.842	- 38944.936	+ 4921.702848	+ 1929.417032
OS90-8	- 150107.041	- 38946.861	+ 4809.994376	+ 4913.000962
OS90-9	- 150115.751	- 39033.577	+ 5424.207611	+ 14298.215657
OS90-10	- 150113.051	- 39036.576	+ 15101.013427	+ 15808.808576
OS90-11	- 150048.113	- 39036.882	+ 6571.081088	+ 15474.646982
OS90-12	- 150044.974	- 39033.899	+ 6156.131068	+ 6442.282587
OS90-5	- 150041.031	- 38949.007	+ 5494.009869	+ 2204.040818
			+ 50582.353846	+ 62996.571878
		BAI MENSEKI =	12414.218032	
		MENSEKI =	6207.109016	

~~1 LOT~~

TENMEI	X	Y	(X-X0)*(YN-1-Y0)	(XN-1-X0)*(Y-Y0)
X0.Y0	- 150000.000	- 38900.000		
OS90-23	- 150041.626	- 38961.834		
OS90-5	- 150041.031	- 38949.007	+ 2537.110854	+ 2039.965382
OS90-13	- 150041.984	- 38947.976	+ 2057.509888	+ 1968.503256
OS90-24	- 150063.564	- 38947.276	+ 3049.546464	+ 1984.835584
OS90-26	- 150065.104	- 38961.081	+ 3077.856704	+ 3882.552684
OS90-23	- 150041.626	- 38961.834	+ 2542.557706	+ 4025.640736
			+ 13264.581616	+ 13901.497642
		BAI MENSEKI =	636.916026	
		MENSEKI =	318.458013	

~~2 LOT~~

TENMEI	X	Y	(X-X0)*(YN-1-Y0)	(XN-1-X0)*(Y-Y0)
X0.Y0	- 150000.000	- 38900.000		
OS90-24	- 150063.564	- 38947.276		
OS90-25	- 150082.594	- 38946.659	+ 3904.713944	+ 2965.832676
OS90-27	- 150083.294	- 38960.497	+ 3886.414746	+ 4996.689218
OS90-26	- 150065.104	- 38961.081	+ 3938.596688	+ 5087.680814
OS90-24	- 150063.564	- 38947.276	+ 3882.552684	+ 3077.856704
			+ 15612.278062	+ 16128.059412
		BAI MENSEKI =	515.781350	
		MENSEKI =	257.890675	

3 LOT

TENMEI	X	Y	(X-X0)*(YN-1-Y0)	(XN-1-X0)*(Y-Y0)
X0.Y0	- 150000.000	- 38900.000		
OS90-25	- 150082.594	- 38946.659		
OS90-14	- 150105.944	- 38945.901	+ 4943.241096	+ 3791.147194

* * * * * M E N S E K I K E I S A N * * * * *

TENMEI	X	Y	(X-X0)*(YN-1-Y0)	(XN-1-X0)*(Y-Y0)
OS90-8	- 150107.041	- 38946.861	+ 4913.288941	+ 4964.641784
OS90-15	- 150110.293	- 38979.239	+ 5168.440273	+ 8481.821799
OS90-28	- 150084.203	- 38978.489	+ 6672.161517	+ 8656.787277
OS90-27	- 150083.294	- 38960.497	+ 6537.662766	+ 5094.028891
OS90-25	- 150082.594	- 38946.659	+ 4996.689218	+ 3886.414746
			+ 33231.483811	+ 34874.841691
		BAI MENSEKI =	1643.357880	
		MENSEKI =	821.678940	

4 LOT

TENMEI	X	Y	(X-X0)*(YN-1-Y0)	(XN-1-X0)*(Y-Y0)
X0.Y0	- 150000.000	- 38900.000		
OS90-15	- 150110.293	- 38979.239		
OS90-16	- 150112.819	- 39004.384	+ 8939.664741	+ 11512.824512
OS90-32	- 150098.329	- 39004.545	+ 10263.974336	+ 11794.662355
OS90-29	- 150084.041	- 39004.703	+ 8786.066345	+ 10295.341287
OS90-28	- 150084.203	- 38978.489	+ 8816.306709	+ 6596.294049
OS90-15	- 150110.293	- 38979.239	+ 8656.787277	+ 6672.161517
			+ 45462.799408	+ 46871.283720
		BAI MENSEKI =	1408.484312	
		MENSEKI =	704.242156	

5 LOT

TENMEI	X	Y	(X-X0)*(YN-1-Y0)	(XN-1-X0)*(Y-Y0)
X0.Y0	- 150000.000	- 39000.000		
OS90-16	- 150112.819	- 39004.384		
OS90-17	- 150113.816	- 39014.315	+ 498.969344	+ 1615.003985
OS90-31	- 150098.439	- 39014.475	+ 1409.154285	+ 1647.486600
OS90-32	- 150098.329	- 39004.545	+ 1423.312275	+ 447.405255
OS90-16	- 150112.819	- 39004.384	+ 512.762355	+ 431.074336
			+ 3844.198259	+ 4140.970176
		BAI MENSEKI =	296.771917	
		MENSEKI =	148.385958	

6 LOT

TENMEI	X	Y	(X-X0)*(YN-1-Y0)	(XN-1-X0)*(Y-Y0)
X0.Y0	- 150000.000	- 39000.000		
OS90-17	- 150113.816	- 39014.315		
OS90-18	- 150115.035	- 39026.452	+ 1646.726025	+ 3010.660832
OS90-33	- 150102.104	- 39026.257	+ 2700.855008	+ 3020.473995
OS90-34	- 150092.922	- 39026.119	+ 2439.852954	+ 2666.854376
OS90-35	- 150083.909	- 39025.983	+ 2191.619171	+ 2414.392326

* * * * * M E N S E K I K E I S A N * * * * *

TENMEI	X	Y	(X-X0)*(YN-1-Y0)	(XN-1-X0)*(Y-Y0)
OS90-30	- 150084.015	- 39008.839	+ 2182.961745	+ 741.671651
OS90-29	- 150084.041	- 39004.703	+ 742.838399	+ 395.122545
OS90-32	- 150098.329	- 39004.545	+ 462.441287	+ 381.966345
OS90-31	- 150098.439	- 39014.475	+ 447.405255	+ 1423.312275
OS90-17	- 150113.816	- 39014.315	+ 1647.486600	+ 1409.154285
			+ 14462.186444	+ 15463.608630
		BAI MENSEKI =	1001.422186	
		MENSEKI =	500.711093	

~~7 LOT~~

TENMEI	X	Y	(X-X0)*(YN-1-Y0)	(XN-1-X0)*(Y-Y0)
X0.Y0	- 150100.000	- 39000.000		
OS90-18	- 150115.035	- 39026.452		
OS90-9	- 150115.751	- 39033.577	+ 416.645452	+ 504.830195
OS90-10	- 150113.051	- 39036.576	+ 438.213427	+ 576.108576
OS90-19	- 150102.094	- 39036.628	+ 76.590144	+ 478.032028
OS90-33	- 150102.104	- 39026.257	+ 77.065312	+ 54.982158
OS90-18	- 150115.035	- 39026.452	+ 394.773995	+ 55.655008
			+ 1403.288330	+ 1669.607965
		BAI MENSEKI =	266.319635	
		MENSEKI =	133.159817	

8 LOT

TENMEI	X	Y	(X-X0)*(YN-1-Y0)	(XN-1-X0)*(Y-Y0)
X0.Y0	- 150000.000	- 39000.000		
OS90-19	- 150102.094	- 39036.628		
OS90-20	- 150092.894	- 39036.671	+ 3402.521432	+ 3743.889074
OS90-34	- 150092.922	- 39026.119	+ 3407.542662	+ 2426.298386
OS90-33	- 150102.104	- 39026.257	+ 2666.854376	+ 2439.852954
OS90-19	- 150102.094	- 39036.628	+ 2680.682158	+ 3739.865312
			+ 12157.600628	+ 12349.905726
		BAI MENSEKI =	192.305098	
		MENSEKI =	96.152549	

9 LOT

TENMEI	X	Y	(X-X0)*(YN-1-Y0)	(XN-1-X0)*(Y-Y0)
X0.Y0	- 150000.000	- 39000.000		
OS90-20	- 150092.894	- 39036.671		
OS90-21	- 150083.843	- 39036.714	+ 3074.606653	+ 3410.510316
OS90-35	- 150083.909	- 39025.983	+ 3080.635026	+ 2178.492669
OS90-34	- 150092.922	- 39026.119	+ 2414.392326	+ 2191.619171
OS90-20	- 150092.894	- 39036.671	+ 2426.298386	+ 3407.542662

* * * * * M E N S E K I K E I S A N * * * * *

TENMEI	X	Y	(X-X0)*(YN-1-Y0)	(XN-1-X0)*(Y-Y0)
			+ 10995.932391	+ 11188.164818
		BAI MENSEKI =	192.232427	
		MENSEKI =	96.116213	

10 LOT

TENMEI	X	Y	(X-X0)*(YN-1-Y0)	(XN-1-X0)*(Y-Y0)
X0.Y0	- 150000.000	- 39000.000		
OS90-21	- 150083.843	- 39036.714		
OS90-22	- 150065.406	- 39036.801	+ 2401.315884	+ 3085.506243
OS90-36	- 150065.570	- 39008.725	+ 2413.041570	+ 570.667350
OS90-30	- 150084.015	- 39008.839	+ 733.030875	+ 579.573230
OS90-35	- 150083.909	- 39025.983	+ 741.671651	+ 2182.961745
OS90-21	- 150083.843	- 39036.714	+ 2178.492669	+ 3080.635026
			+ 8467.552649	+ 9499.343594
		BAI MENSEKI =	1031.790945	
		MENSEKI =	515.895472	

11 LOT

TENMEI	X	Y	(X-X0)*(YN-1-Y0)	(XN-1-X0)*(Y-Y0)
X0.Y0	- 150000.000	- 38900.000		
OS90-22	- 150065.406	- 39036.801		
OS90-11	- 150048.113	- 39036.882	+ 6581.906513	+ 8952.904092
OS90-12	- 150044.974	- 39033.899	+ 6156.131068	+ 6442.282587
OS90-23	- 150041.626	- 38961.834	+ 5573.679774	+ 2780.922316
OS90-26	- 150065.104	- 38961.081	+ 4025.640736	+ 2542.557706
OS90-27	- 150083.294	- 38960.497	+ 5087.680814	+ 3938.596688
OS90-28	- 150084.203	- 38978.489	+ 5094.028891	+ 6537.662766
OS90-29	- 150084.041	- 39004.703	+ 6596.294049	+ 8816.306709
OS90-30	- 150084.015	- 39008.839	+ 8796.622545	+ 9146.938399
OS90-36	- 150065.570	- 39008.725	+ 7136.573230	+ 9134.530875
OS90-22	- 150065.406	- 39036.801	+ 7111.267350	+ 8970.041570
			+ 62159.824970	+ 67262.743708
		BAI MENSEKI =	5102.918738	
		MENSEKI =	2551.459369	

λ10

TENMEI	X	Y	(X-X0)*(YN-1-Y0)	(XN-1-X0)*(Y-Y0)
X0.Y0	- 150000.000	- 38900.000		
OS90-6	- 150042.937	- 38946.944		
OS90-7	- 150104.842	- 38944.936	+ 4921.702848	+ 1929.417032
OS90-14	- 150105.944	- 38945.901	+ 4760.699584	+ 4812.352642
OS90-25	- 150082.594	- 38946.659	+ 3791.147194	+ 4943.241096

* * * * * M E N S E K I K E I S A N * * * * *

TENMEI	X	Y	(X-X0)*(YN-1-Y0)	(XN-1-X0)*(Y-Y0)
OS90-24	- 150063.564	- 38947.276	+ 2965.832676	+ 3904.713944
OS90-13	- 150041.984	- 38947.976	+ 1984.835584	+ 3049.546464
OS90-6	- 150042.937	- 38946.944	+ 2059.945512	+ 1970.896896
			+ 20484.163398	+ 20610.168074
		BAI MENSEKI =	126.004676	
		MENSEKI =	63.002338	

1 入替り

TENMEI	X	Y	(X-X0)*(YN-1-Y0)	(XN-1-X0)*(Y-Y0)
X0.Y0	- 150000.000	- 38900.000		
OS90-1	- 150040.938	- 38947.009		
OS90-5	- 150041.031	- 38949.007	+ 1928.826279	+ 2006.248566
OS90-6	- 150042.937	- 38946.944	+ 2104.213559	+ 1926.159264
OS90-1	- 150040.938	- 38947.009	+ 1921.793472	+ 2018.425433
			+ 5954.833310	+ 5950.833263
		BAI MENSEKI =	4.000047	
		MENSEKI =	2.000023	

2 入替り

TENMEI	X	Y	(X-X0)*(YN-1-Y0)	(XN-1-X0)*(Y-Y0)
X0.Y0	- 150100.000	- 38900.000		
OS90-2	- 150106.841	- 38944.871		
OS90-7	- 150104.842	- 38944.936	+ 217.265382	+ 307.407176
OS90-8	- 150107.041	- 38946.861	+ 316.394376	+ 226.900962
OS90-2	- 150106.841	- 38944.871	+ 320.576101	+ 315.936711
			+ 854.235859	+ 850.244849
		BAI MENSEKI =	3.991010	
		MENSEKI =	1.995505	

3 入替り

TENMEI	X	Y	(X-X0)*(YN-1-Y0)	(XN-1-X0)*(Y-Y0)
X0.Y0	- 150100.000	- 39000.000		
OS90-3	- 150116.051	- 39036.562		
OS90-9	- 150115.751	- 39033.577	+ 575.888062	+ 538.944427
OS90-10	- 150113.051	- 39036.576	+ 438.213427	+ 576.108576
OS90-3	- 150116.051	- 39036.562	+ 587.081376	+ 477.170662
			+ 1601.182865	+ 1592.223665
		BAI MENSEKI =	8.959200	
		MENSEKI =	4.479600	

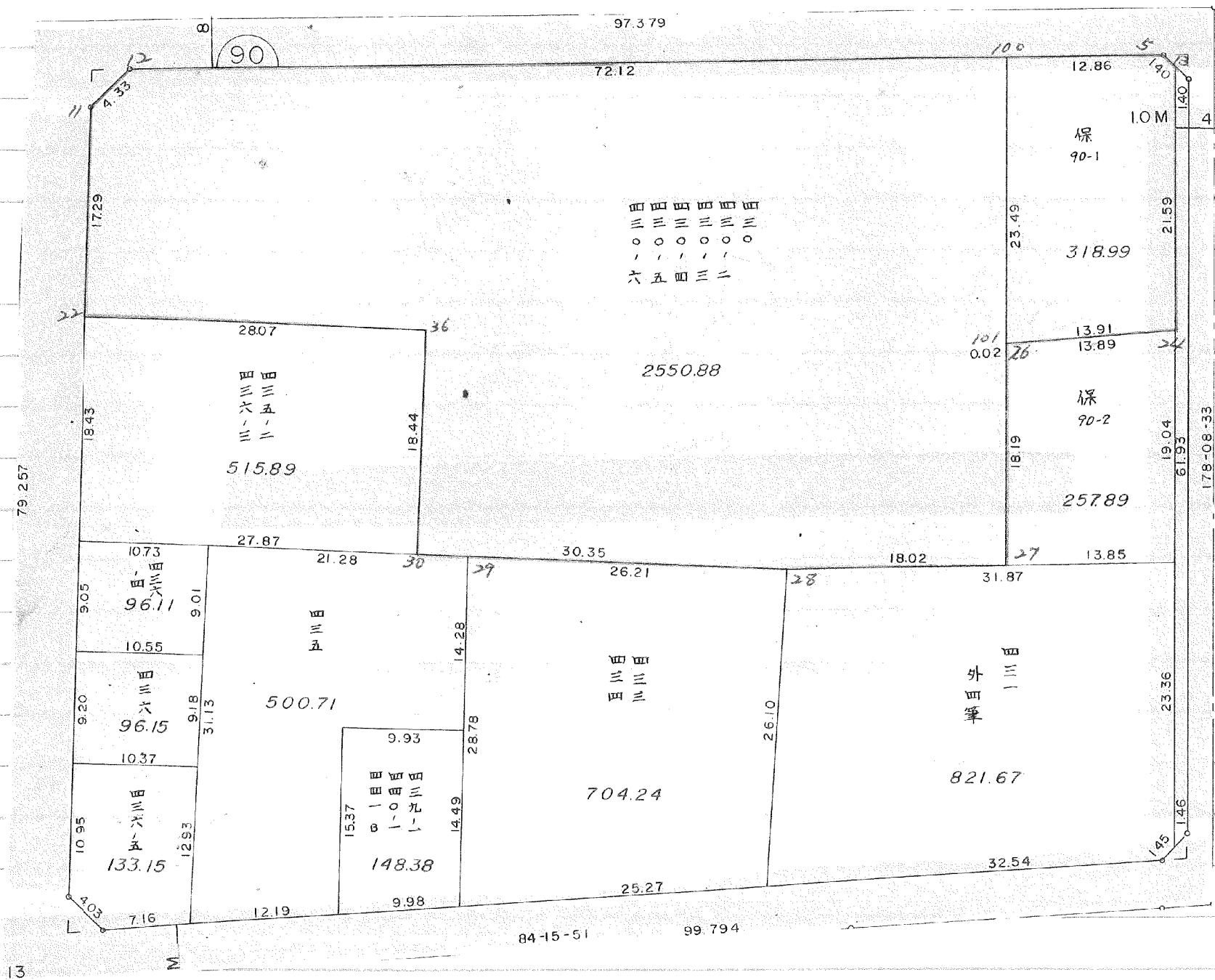
* * * * * M E N S E K I K E I S A N * * * * *

4 入替り

TENMEI	X	Y	(X-X0)*(YN-1-Y0)	(XN-1-X0)*(Y-Y0)
X0.Y0	- 150000.000	- 39000.000		
OS90-4	- 150045.113	- 39036.896		
OS90-11	- 150048.113	- 39036.882	+ 1775.177248	+ 1663.857666
OS90-12	- 150044.974	- 39033.899	+ 1658.731068	+ 1630.982587
OS90-4	- 150045.113	- 39036.896	+ 1529.285587	+ 1659.360704
			+ 4963.193903	+ 4954.200957
		BAI MENSEKI =	8.992946	
		MENSEKI =	4.496473	



確定以後変更



I LOT

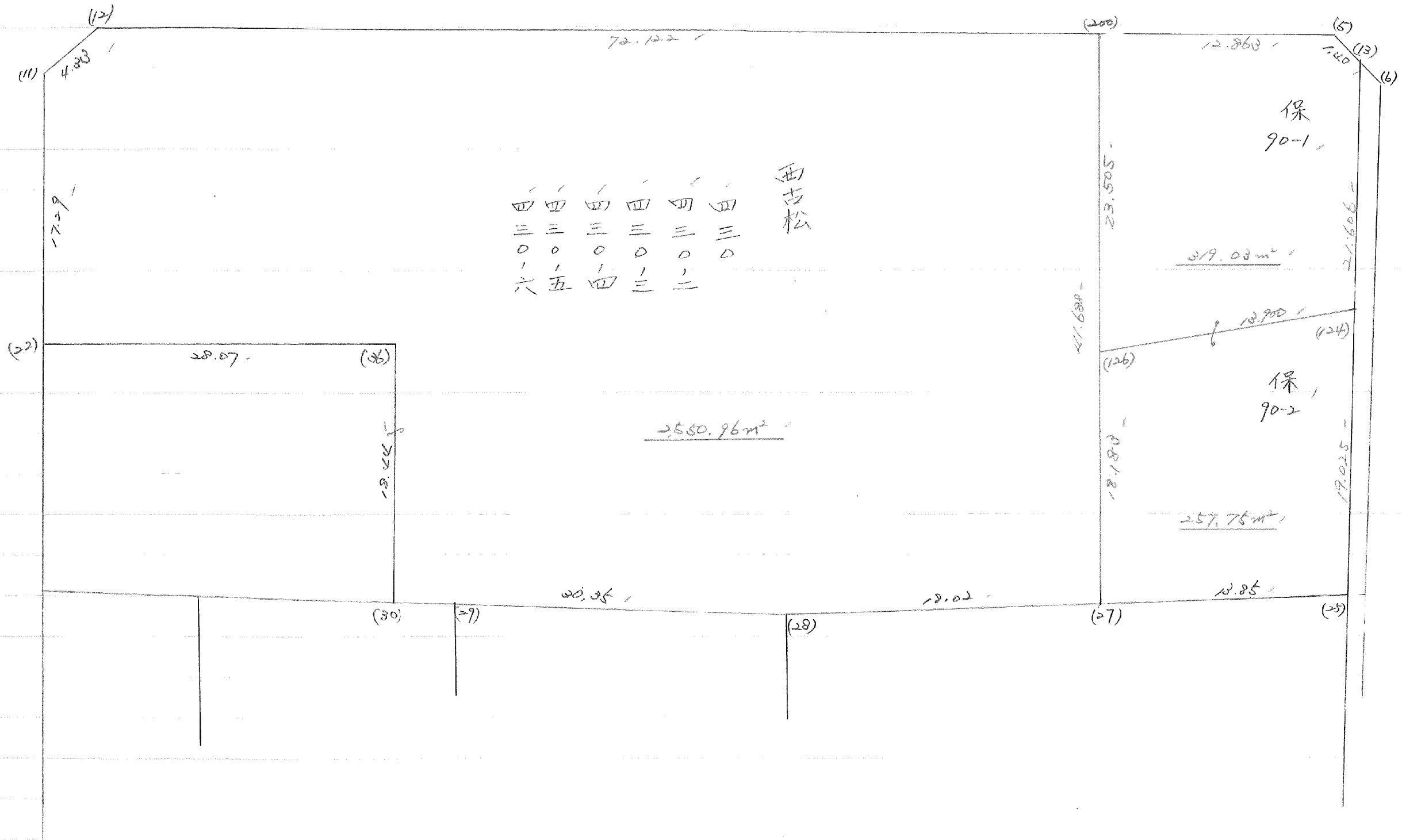
元NO. X _o Y _o	X	Y	(X-X _o) (Y _{N-1} -Y _o)	(X _{N-1} -X _o) (Y-Y _o)
	-150000.000	-38900.000		
5	-150041.031	-38949.007		
13	-150041.984	-38947.976	2057.509888	1968.503256
24	-150063.564	-38947.276	3049.546464	1984.835584
101	-150065.107	-38961.104	3077.998532	3884.014656
100	-150041.628	-38961.857	2543.637312	4027.323699
5	-150041.031	-38949.007	2538.054567	2040.063396
			13266.746763	13904.740591
			平均値=	637.993828
			分散=	318.996914

II LOT

元NO. X _o Y _o	X	Y	(X-X _o) (Y _{N-1} -Y _o)	(X _{N-1} -X _o) (Y-Y _o)
	-150000.000	-38900.000		
100	-150041.628	-38961.857		
101	-150065.107	-38961.104	4027.323699	2543.637312
26	-150065.104	-38961.081	3978.114816	3976.800667
27	-150083.294	-38960.497	5087.680814	3938.596688
28	-150084.203	-38978.489	5094.028891	6537.662766
29	-150084.041	-39004.703	6596.294049	8816.306709
30	-150084.015	-39008.839	8796.622545	9146.938399
36	-150065.570	-39008.725	7136.573230	9134.530875
22	-150065.406	-39036.801	7111.267350	8970.041570
11	-150048.113	-39036.882	6581.906513	8952.904092
12	-150044.974	-39033.899	6156.131068	6442.282587
100	-150041.628	-38961.857	5573.947572	2781.956718
			66139.890547	71241.658383
			平均値=	5101.767836
			分散=	2550.883918

S. 56. 12. 14.

90 BLOCK.



(株)90-1 LOT

元NO. X,Y	X	Y	(X-X ₀)(Y _{N-1} -Y ₀)	(X _{N-1} -X ₀)(Y-Y ₀)
	-150000.000	-38900.000		
200	-150041.628	-38961.856		
5	-150041.031	-38949.007	2538.013536	2040.063396
13	-150041.984	-38947.976	2057.509888	1968.503256
124	-150063.579	-38947.276	3050.266104	1984.835584
126	-150065.121	-38961.090	3078.660396	3884.041110
200	-150041.628	-38961.856	2543.054520	4028.124576
			13267.504444	13905.567922
			ハイ/セキ=	638.063478
			ノセキ=	319.031739

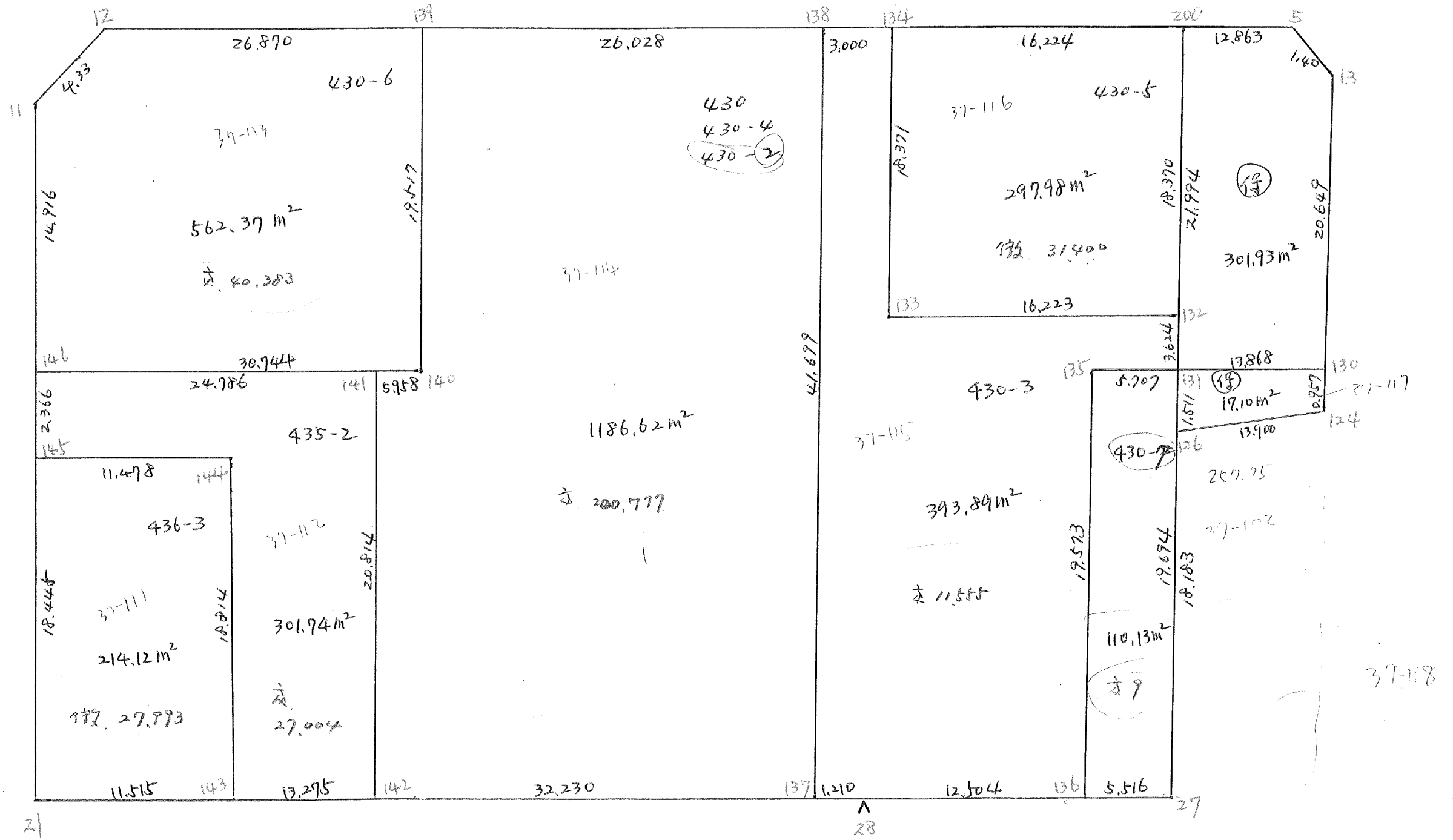
(株)90-2 LOT

元NO. X,Y	X	Y	(X-X ₀)(Y _{N-1} -Y ₀)	(X _{N-1} -X ₀)(Y-Y ₀)
	-150000.000	-38900.000		
124	-150063.579	-38947.276		
25	-150082.594	-38946.659	3904.713944	2966.532561
27	-150083.294	-38960.497	3886.414746	4996.689218
126	-150065.121	-38961.090	3939.625137	5088.430460
124	-150063.579	-38947.276	3884.041110	3078.660396
			15614.794937	16130.312635
			ハイ/セキ=	515.517698
			ノセキ=	257.758849

11 LOT

テ/NO. X _o Y _o	X	Y	(X-X _o) (YN-1-Y _o)	(XN-1-X _o) (Y-Y _o)
	-150000.000	-38900.000		
11	-150048.113 ✓	-39036.882 ✓		
12	-150044.974 ✓	-39033.899 ✓	6156.131068	6442.282587
200	-150041.628	-38961.856	5573.947572	2781.911744
126	-150065.121	-38941.090	4028.124576	2543.054520
27	-150083.294 ✓	-38960.497 ✓	5088.430460	3939.625137
28	-150084.203 ✓	-38978.489 ✓	5094.028891	6537.662766
29	-150084.041 ✓	-39004.703 ✓	6596.294049	8816.306709
30	-150084.015 ✓	-39008.839 ✓	8796.622545	9146.938399
36	-150065.570 ✓	-39008.725 ✓	7136.573230	9134.530875
22	-150065.406 ✓	-39036.801 ✓	7111.267350	8970.041570
11	-150048.113	-39036.882	6581.906513	8952.904092
			62163.326254	67265.258399
			イイノセキ=	5101.932145
			ノセキ=	2550.966072

90 Blok



90 BLOCK

元NO.	X	Y	(X-X ₀)(Y _{N-1} -Y ₀)	(X _{N-1} -X ₀)(Y-Y ₀)
X ₀ , Y ₀ =	-150000.000	-38900.000		
200	-150041.628	-38961.856		
5	-150041.031	-38949.007	2538.013536	2040.063396
13	-150041.984	-38947.976	2057.509888	1968.503256
124	-150063.579	-38947.276	3050.266104	1984.835584
126	-150065.121	-38961.090	3078.660396	3884.041110
200	-150041.628	-38961.856	2543.054520	4028.124576
			13267.504444	13905.567922
			平均値 =	638.063478
			分散 =	319.031739

1 LOT

元NO.	X	Y	(X-X ₀)(Y _{N-1} -Y ₀)	(X _{N-1} -X ₀)(Y-Y ₀)
X ₀ , Y ₀ =	-150000.000	-38900.000		
200	-150041.628	-38961.856		
5	-150041.031	-38949.007	2538.013536	2040.063396
13	-150041.984	-38947.976	2057.509888	1968.503256
130	-150062.622	-38947.306	3004.353072	1986.095104
131	-150063.610	-38961.139	3009.134660	3828.646458
200	-150041.628	-38961.856	2545.094292	3934.660160
			13154.105448	13757.968374
			平均値 =	603.862926
			分散 =	301.931463

2 LOT

元NO.	X	Y	(X-X ₀)(Y _{N-1} -Y ₀)	(X _{N-1} -X ₀)(Y-Y ₀)
X ₀ , Y ₀ =	-150000.000	-38900.000		
131	-150063.610	-38961.139		
130	-150062.622	-38947.306	3828.646458	3009.134660
124	-150063.579	-38947.276	3007.668174	2960.517672
126	-150065.121	-38961.090	3078.660396	3884.041110
131	-150063.610	-38961.139	3885.934900	3981.432819
			13800.909928	13835.126261
			平均値 =	34.216333
			分散 =	17.108167

90 BLOCK

円NO.	X	Y	(X-X ₀)(Y _{N-1} -Y ₀)	(X _{N-1} -X ₀)(Y-Y ₀)
X ₀ , Y ₀ =	-150000.000	-38900.000		
12	-150044.974	-39033.899		
200	-150041.628	-38961.856	5573.947572	2781.911744
27	-150083.294	-38960.497	5152.233664	2518.369116
28	-150084.203	-38978.489	5094.028891	6537.662766
21	-150083.843	-39036.714	6580.753227	11511.728942
11	-150048.113	-39036.882	6577.720682	11476.597526
12	-150044.974	-39033.899	6156.131068	6442.282387
			35134.815104	41268.552681
			円ノイノセキ=	6133.737577
			ノセキ=	3066.868789

1 LOT

円NO.	X	Y	(X-X ₀)(Y _{N-1} -Y ₀)	(X _{N-1} -X ₀)(Y-Y ₀)
X ₀ , Y ₀ =	-150000.000	-39000.000		
12	-150044.974	-39033.899		
139	-150043.727	-39007.058	1482.301573	317.426492
140	-150063.219	-39006.068	446.199702	265.335436
146	-150063.029	-39036.812	382.459972	2327.217828
11	-150048.113	-39036.882	1771.135756	2324.635578
12	-150044.974	-39033.899	1658.731068	1630.982587
			5740.828071	6865.597921
			円ノイノセキ=	1124.769850
			ノセキ=	562.384925
				562.37 ... 換地計画に利按分

2 LOT

円NO.	X	Y	(X-X ₀)(Y _{N-1} -Y ₀)	(X _{N-1} -X ₀)(Y-Y ₀)
X ₀ , Y ₀ =	-150000.000	-39000.000		
145	-150065.395	-39036.800		
144	-150065.100	-39025.326	2395.680000	1656.193770
143	-150083.914	-39025.203	2125.205964	1640.715300
21	-150083.843	-39036.714	2113.095129	3080.818596
145	-150065.395	-39036.800	2400.912030	3085.422400
			9034.893123	9463.150066
			円ノイノセキ=	428.256943
			ノセキ=	214.128472

3 LOT

元NO.	X	Y	(X-X ₀) (Y _{N-1} -Y ₀)	(X _{N-1} -X ₀) (Y-Y ₀)
X ₀ , Y ₀ =	-150000.000	-39000.000		
146	-150063.029	-39036.812		
141	-150063.182	-39012.026	2325.855784	757.986754
142	-150083.996	-39011.928	1010.135896	753.634896
143	-150083.914	-39025.203	1000.926192	2116.951188
144	-150065.100	-39025.326	1640.715300	2125.205964
145	-150065.395	-39036.800	1656.193770	2395.680000
146	-150063.029	-39036.812	2319.467200	2407.320740
			9953.294142	10556.779542
			内イノセキ=	603.485400
			ノセキ=	301.742700

4 LOT

元NO.	X	Y	(X-X ₀) (Y _{N-1} -Y ₀)	(X _{N-1} -X ₀) (Y-Y ₀)
X ₀ , Y ₀ =	-150000.000	-38900.000		
139	-150043.727	-39007.058		
138	-150042.519	-38981.058	4551.999102	3544.423166
137	-150084.196	-38979.699	6824.759368	3388.721781
142	-150083.996	-39011.928	6694.397204	9423.889888
141	-150063.182	-39012.026	7071.834896	9409.735896
140	-150063.219	-39006.068	7082.171694	6701.588376
139	-150043.727	-39007.058	4638.035436	6768.099702
			36863.197700	39236.458809
			内イノセキ=	2373.261109
			ノセキ=	1186.630555
				1186.62 ... 換地計画(25) 控分

5 LOT

元NO.	X	Y	(X-X ₀) (Y _{N-1} -Y ₀)	(X _{N-1} -X ₀) (Y-Y ₀)
X ₀ , Y ₀ =	-150000.000	-38900.000		
138	-150042.519	-38981.058		
134	-150042.380	-38978.061	3435.238040	3319.075659
133	-150060.741	-38977.462	4741.503201	3282.839560
132	-150059.988	-38961.257	4646.790456	3720.811437
131	-150063.610	-38961.139	3896.557770	3667.606332
135	-150064.017	-38966.831	3913.935363	4251.119910
136	-150083.573	-38966.006	5585.267163	4225.506102
28	-150084.203	-38978.489	5557.903218	6559.561197
137	-150084.196	-38979.699	6608.459844	6710.894897
138	-150042.519	-38981.058	3388.721781	6824.759368
			41774.376836	42562.174462
			内イノセキ=	787.797626
			ノセキ=	393.898813

6 LOT

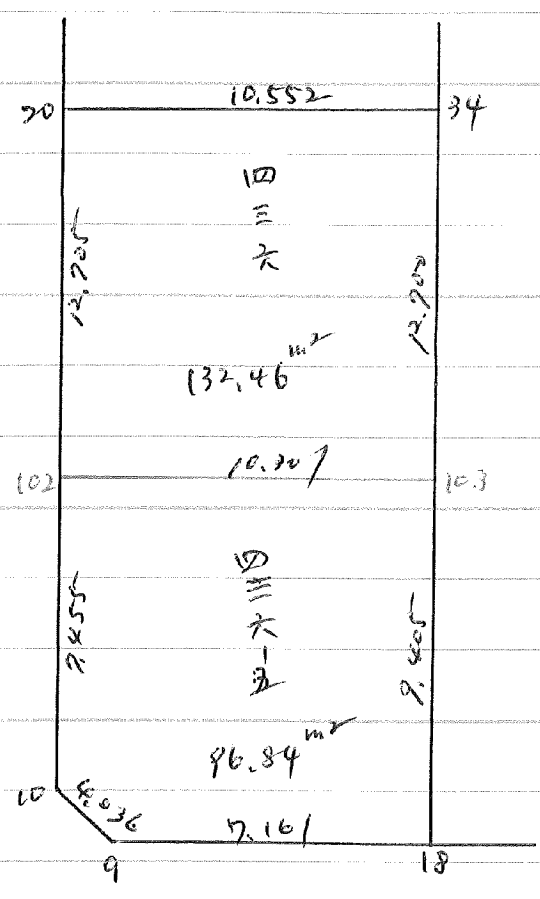
元NO.	X	Y	(X-X ₀)(Y _{N-1} -Y ₀)	(X _{N-1} -X ₀)(Y-Y ₀)
X ₀ ,Y ₀ =	-150000.000	-38900.000		
134	-150042.380	-38978.061		
200	-150041.628	-38961.856	3249.523308	2621.457280
132	-150059.988	-38961.257	3710.617728	2550.006396
133	-150060.741	-38977.462	3720.811437	4646.790456
134	-150042.380	-38978.061	3282.839560	4741.503201
			13963.792033	14559.757333
			平均シンセキ=	595.965300
			シンセキ=	297.982650

7 LOT

元NO.	X	Y	(X-X ₀)(Y _{N-1} -Y ₀)	(X _{N-1} -X ₀)(Y-Y ₀)
X ₀ ,Y ₀ =	-150000.000	-38900.000		
135	-150064.017	-38966.831		
131	-150063.610	-38961.139	4251.119910	3913.935363
27	-150083.294	-38960.497	5092.511866	3848.214170
136	-150083.573	-38966.006	5055.915781	5497.903764
135	-150064.017	-38966.831	4225.506102	5585.267163
			18625.053659	18845.320460
			平均シンセキ=	220.266801
			シンセキ=	110.133401

№ 55. 12. 12

БНО. 90



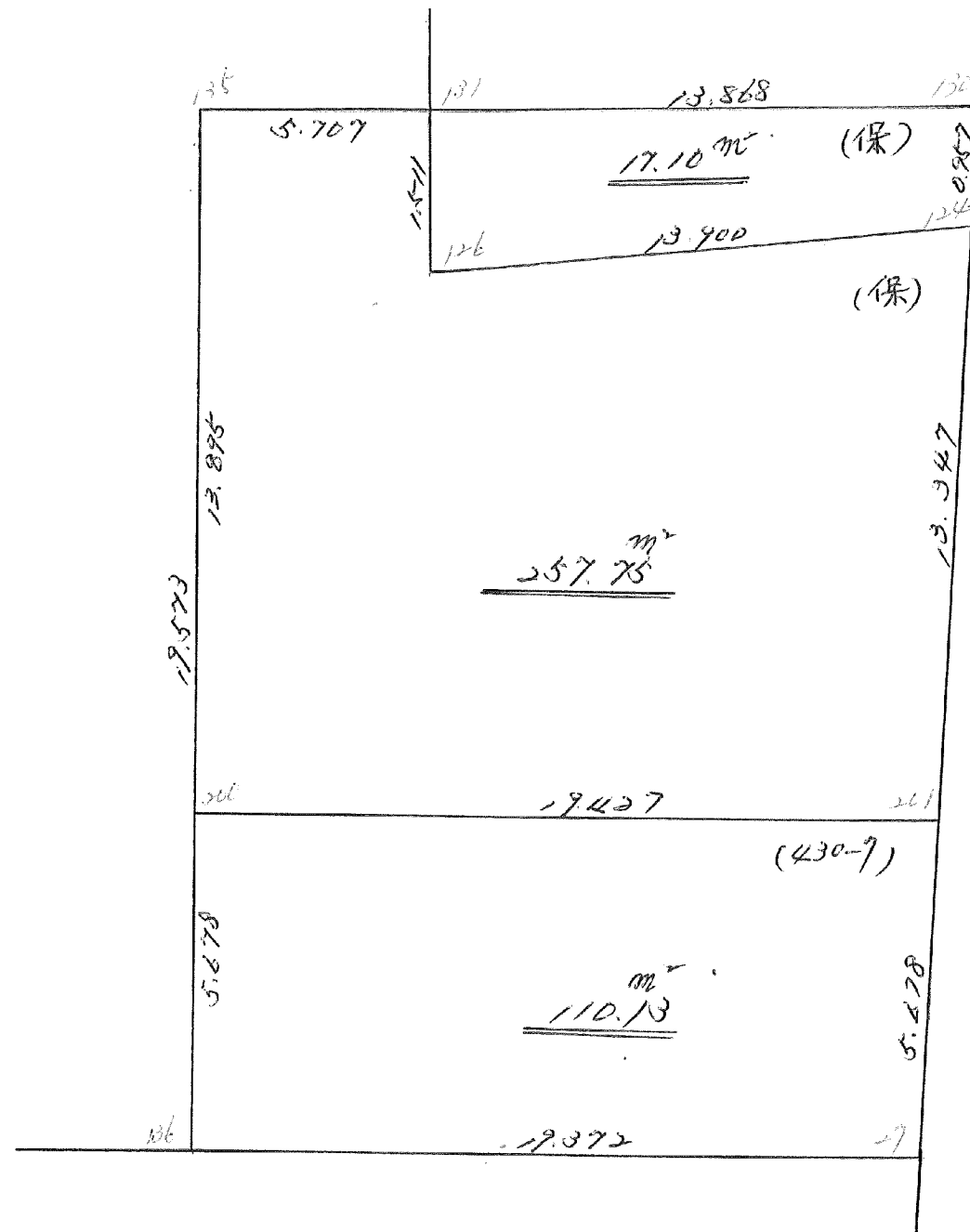
1 LOT

元/NO.	X	Y	(X-X ₀)(Y _{N-1} -Y ₀)	(X _{N-1} -X ₀)(Y-Y ₀)
X ₀ Y ₀	-150000.000	-39000.000		
34	-150092.922	-39026.119		
103	-150105.627	-39026.310	2758.871613	2444.777820
102	-150105.597	-39036.611	2778.257070	3867.110097
20	-150092.894	-39036.671	3400.942234	3872.347587
34	-150092.922	-39026.119	5467.542662	2426.298386
			12345.613579	12610.533890
			平均値=	244.920311
			分散=	132.460155

2 LOT

元/NO.	X	Y	(X-X ₀)(Y _{N-1} -Y ₀)	(X _{N-1} -X ₀)(Y-Y ₀)
X ₀ Y ₀	-150100.000	-39000.000		
103	-150105.627	-39026.310		
18	-150115.035	-39026.452	395.570850	148.845404
9	-150115.751	-39033.577	416.645452	504.830195
10	-150113.051	-39036.576	438.213427	576.108576
102	-150105.597	-39036.611	204.715872	477.810161
103	-150105.627	-39026.310	206.010097	147.257070
			1661.155698	1854.851406
			平均値=	193.695708
			分散=	96.847854

90 BLOCK



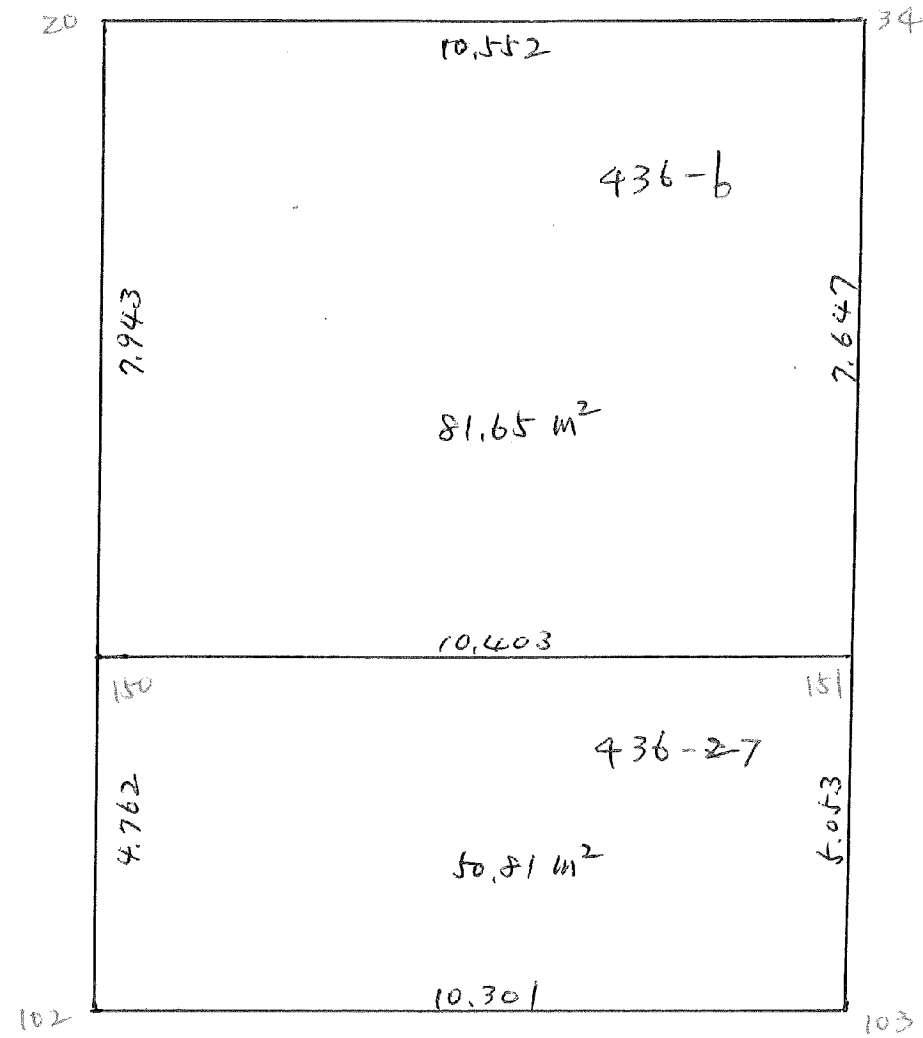
1 LOT

72NO.	X	Y	(X-X ₀)(Y _{N-1} -Y ₀)	(X _{N-1} -X ₀)(Y-Y ₀)
X ₀ Y ₀	-150000.000	-38900.000		
25	-150082.594	-38946.659		
136	-150083.573	-38966.006	3899.432607	5451.699564
200	-150077.900	-38966.245	5141.867400	5536.293385
201	-150076.919	-38946.843	5095.499155	3649.069700
25	-150082.594	-38946.659	3868.950742	3588.963621
			18005.749904	18226.026270
			11イノノナナ	220.276366
			ノノナナ	110.138183

2 LOT

72NO.	X	Y	(X-X ₀)(Y _{N-1} -Y ₀)	(X _{N-1} -X ₀)(Y-Y ₀)
X ₀ Y ₀	-150000.000	-38900.000		
201	-150076.919	-38946.843		
200	-150077.900	-38966.245	3649.069700	5095.499155
135	-150064.017	-38966.831	4240.806165	5206.134900
131	-150063.610	-38961.139	4251.119910	3913.935363
126	-150063.121	-38961.090	3981.432819	3885.934900
124	-150063.579	-38947.276	3884.041110	3078.660396
201	-150076.919	-38946.843	3636.422644	2978.231097
			23642.892348	24158.395811
			11イノノナナ	515.503463
			ノノナナ	257.751731

90 BLOK



90 BLOCK

元NO.	X	Y	(X-X ₀)(Y _{N-1} -Y ₀)	(X _{N-1} -X ₀)(Y-Y ₀)
X ₀ , Y ₀ =	-150000.000	-39000.000		
20	-150092.894	-39036.671		
34	-150092.922	-39026.119	3407.542662	2426.298386
103	-150105.627	-39026.310	2758.871613	2444.777820
102	-150105.597	-39036.611	2778.257070	3867.110097
20	-150092.894	-39036.671	3400.942234	3872.347587
			12345.613579	12610.533890
			平均値=	264.920311
			分散=	132.460156

1 LOT

元NO.	X	Y	(X-X ₀)(Y _{N-1} -Y ₀)	(X _{N-1} -X ₀)(Y-Y ₀)
X ₀ , Y ₀ =	-150000.000	-39000.000		
20	-150092.894	-39036.671		
34	-150092.922	-39026.119	3407.542662	2426.298386
151	-150100.568	-39026.234	2626.735592	2437.715748
150	-150100.837	-39036.634	2645.357858	3684.208112
20	-150092.894	-39036.671	3403.078796	3697.793627
			12082.714908	12246.015873
			平均値=	163.300965
			分散=	81.650483

2 LOT

元NO.	X	Y	(X-X ₀)(Y _{N-1} -Y ₀)	(X _{N-1} -X ₀)(Y-Y ₀)
X ₀ , Y ₀ =	-150100.000	-39000.000		
150	-150100.837	-39036.634		
151	-150100.568	-39026.234	20.808112	21.957858
103	-150105.627	-39026.310	147.618718	14.944080
102	-150105.597	-39036.611	147.257070	206.010097
150	-150100.837	-39036.634	30.643407	205.040498
			346.327307	447.952533
			平均値=	101.625226
			分散=	50.812613