

BLOCK NO. 4

街区略図

工区

ブロック 4

記入者

点検者



II

3~33~12
38.141

85~90~23
6.705

I
0.277
187m540
K.34-1

2.126
168m543

279.69
m²

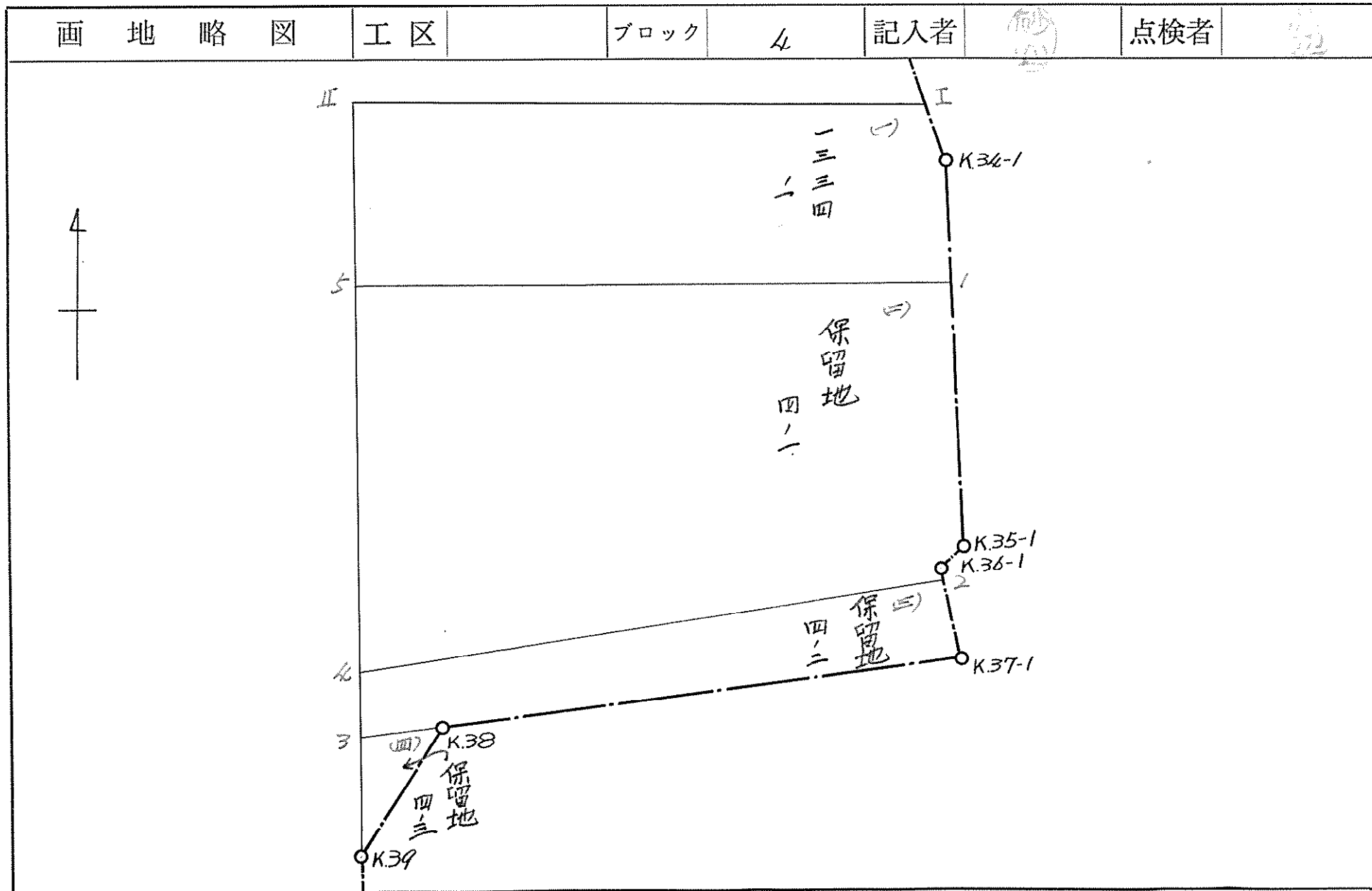
K.35-1
K.36-1
219~4~51
0.638

3.548
160m33
K.37-1

13.444
246~5~41

8.491
190m41.33
K.38
K.39

面積計算書		工区	ブロック	4	計算者	精算者	備考	全面積		
点	①	②	③	④	⑤	⑥	③ × ⑤	② × ⑥		
	X	X - (定数)	X _{n-1} - X _{n+1}	Y	Y - (定数)	Y _{n-1} - Y _{n+1}	+	-		
I	526.826 ^{+480.000}	46.826	- 0.229	475.094 ^{+460.000}	15.094	- 6.367		3.456526	298.141142	
K34-1	526.561	46.561	+ 20.936	475.175	15.175	- 4.442	317.703800		206.823962	
K35-1	505.890	25.890	+ 21.166	479.536	19.536	- 3.959	413.498976		102.498510	
K36-1	505.395	25.395	+ 3.837	479.134	19.134	- 0.789	73.417158		20.036655	
K37-1	502.053	22.053	+ 8.790	480.325	20.325	+ 11.100	178.656750	244.788300		
K38	496.605	16.605	+ 13.789	468.034	8.034	+ 13.881	110.780806	230.494005		
K39	488.264	8.264	- 29.727	466.444	6.444	- 0.774	191.560788		6.396376	
II	526.332	46.332	- 38.562	468.808	8.808	- 8.650	339.654096	400.471800		
							1094.057510	534.671410	475.282705	1034.668405
							559.386100		559.386100	
										$\sum = 279.693050$



面積計算書

工区

ブロック

4

計算者

(印)

精算者

(印)

備考

(一) 1334-1

(二) 保留地 4-1

点	①	②	③	④	⑤	⑥	③ × ⑤		② × ⑥	
	X	X-(定数)	X _{n-1} -X _{n+1}	Y	Y-(定数)	Y _{n-1} -Y _{n+1}	+	-	+	-
I	526.826	^{+510.000} 16.826	-0.229	475.094	^{+460.000} 15.094	-6.367		7.456526		107.131142
K34-1	526.561	16.561	+7.270	475.175	15.175	-1.685	119.427250			27.905285
1	518.956	3.956	+7.192	476.779	16.779	+6.799	120.674568		60.891844	
5	519.369	9.369	-7.376	468.376	8.376	+7.971		61.781376	74.680299	
II	526.332	16.332	-7.457	468.808	8.808	-6.718		65.631256		109.712376
							240.101818	130.919158	135.572143	244.754803
							109.182660			109.182660
									72=54,591,330	
1	518.956	^{+4490.000} 28.956	+13.479	476.779	^{+460.000} 16.779	-11.160	226.164141			323.148960
K35-1	505.890	15.890	+13.561	479.536	19.536	-2.355	264.927696			37.420950
K36-1	505.395	15.395	+1.950	479.134	19.134	-0.117	37.311300			1.801215
2	503.940	13.940	+5.483	479.653	19.653	+11.967	107.757399		166.819980	
4	499.912	9.912	-15.429	467.167	7.167	+11.277		110.579643	111.777624	
5	519.369	29.369	-19.044	468.376	8.376	-9.612		159.512544		282.294828
							636.160536	270.092187	278.597604	644.665955
							366.068349			366.068349
									72=183,034,174.5	

面積計算書

工区

ブロック

4

計算者

(Handwritten signature)

精算者

(Handwritten signature)

備考

(三) 保留地 4-2

(四) 保留地 4-3

点	①	②	③	④	⑤	⑥	③	×	⑤	②	×	⑥
	X	X - (定数)	X _{n-1} - X _{n+1}	Y	Y - (定数)	Y _{n-1} - Y _{n+1}	+		-	+		-
2	503.940	^{+490.000} 13.940	- 2.141	479.653	^{+460.000} 19.653	- 13.158			42.077073			183.422520
K37-1	502.053	12.053	+ 7.335	480.325	20.325	+ 11.619	149.083875			140.043807		
K38	496.605	6.605	+ 5.967	463.034	8.034	+ 13.795	47.938878			88.473975		
3	496.086	6.086	- 3.307	466.930	6.930	+ 0.867		22.917510		5.276562		
4	499.912	9.912	- 7.854	457.167	7.167	- 12.723		56.289618				126.110376
								197.022753	121.28420	233.794344	309.532896	
								45.738552				75.738552
										1/2 = 37.869276		
K38	496.605	^{+480.000} 16.605	+ 7.822	462.034	^{+466.000} 2.034	+ 0.486	15.909948			8.070030		
K39	488.264	8.264	+ 0.519	466.444	0.444	+ 1.104	0.230436			9.123456		
3	496.086	16.086	- 8.341	466.930	0.930	- 1.590		7.757130				25.576740
								16.140384	7.757130	17.193436	25.576740	
								8.383254				8.383254
										1/2 = 4.191627		

