

面積計算書

工
区

ブ
ロ
ック

58-1

計
算
者



精
算
者





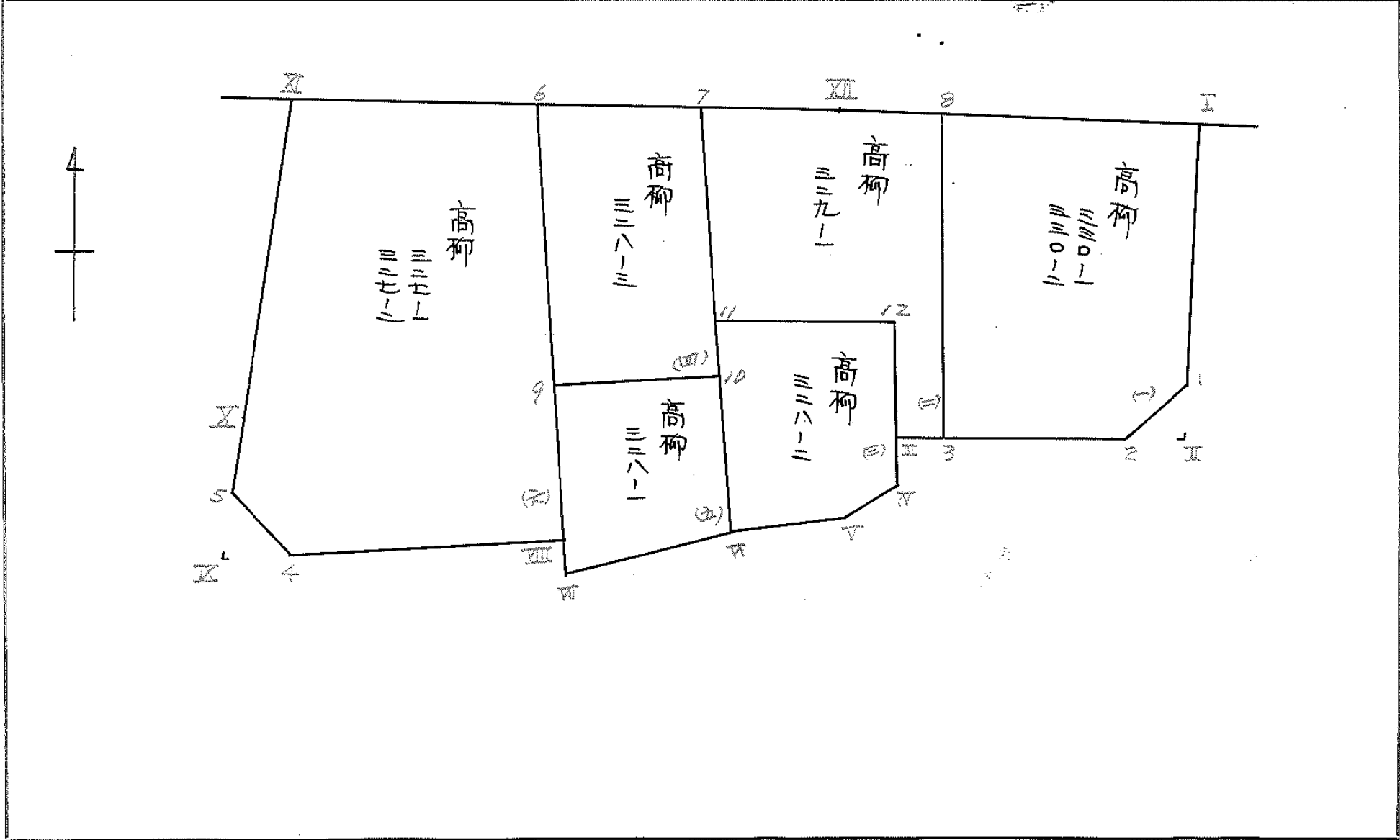
備
考

全体

点	①	②	③	④	⑤	⑥	③ × ⑤		② × ⑥	
	X	X - (定数)	X _{n-1} - X _{n+1}	Y	Y - (定数)	Y _{n-1} - Y _{n+1}	+	-	+	-
I	⁻¹⁴⁸ 744.043	^{-148.740} 4.043	+24.658	⁻³⁹ 842.318	^{-39.840} 2.318	-30.705			57.107562	132.226315
II	769.669	29.669	+27.987	841.786	1.786	+21.058			44.884782	624.71471
III	772.030	22.030	+4.341	863.377	23.377	+21.287			101.479557	682.142910
IV	774.010	24.010	+3.821	863.083	23.083	+2.888			88.200143	98.560980
V	775.851	25.851	+4.722	866.275	26.275	+15.830			124.070550	571.106420
VI	778.732	38.732	+6.329	879.013	39.013	+24.335			246.913277	942.543220
VII	782.180	42.180	+2.291	890.610	50.610	+11.695			115.847510	492.295700
VIII	781.023	41.023	+0.723	890.708	50.708	+26.193			36.661884	1074.515478
IX	782.903	42.903	-2.651	916.803	76.803	+26.204	203.604753			1124.230212
X	778.372	38.372	-36.666	916.912	76.912	-1.714	2820.055392			65.769608
XI	746.237	6.237	-33.362	915.089	75.089	-42.421	2505.118218			264.571777
XII	745.010	5.010	-2.194	874.491	34.491	-72.721	75.673254			364.582710
							5604.452617	820.417255	827.158410	5611.183762
							4784.035352			4784.035352
							X/2 = 2392.017676			
							2392.01 - (2.05 + 2.00) = 2387.96			

面地計算

画地略図	工区	ブロック	58-1	記入者		点検者	
------	----	------	------	-----	---	-----	---



面積計算書

工区

ブロック

58-1

計算者

三和

精算者

三和

備考

1. 高柳 330-1, 330-2
2. 高柳 329-1

点	①	②	③	④	⑤	⑥	③ × ⑤		② × ⑥		
	X	X-(定数)	X _{n-1} -X _{n+1}	Y	Y-(定数)	Y _{n-1} -Y _{n+1}	+	-	+	-	
I	-148 744.043	-148.740 4.043	+22.922	-39 842.318	-39.840 2.318	-23.947			53.133196	96.817721	
1	767.670	27.670	+25.850	841.827	1.827	+1.516			47.227950		41.947720
2	769.893	29.893	+4.143	843.834	2.834	+19.563			15.884262		524.796759
3	771.813	31.813	-25.145	861.390	21.390	+21.940	527.851550				697.977220
8	744.748	4.748	-27.770	865.774	25.774	-19.072	715.743980			90.553856	
							1253.595530	116.245608	187.371577	1224.701699	
							1137.350122		Y ₃ = 568.675061		1137.350122
9	-148 744.748	-148.740 4.748	+26.803	-39 865.774	-39.840 5.774	-13.101			154.710522	62.203548	
3	771.813	31.813	+27.222	861.390	1.390	-2.397			27.921980	76.255761	
IV	772.030	32.030	-7.722	863.377	3.377	+3.296	26.077194				105.570880
12	764.091	24.091	-7.581	864.686	4.686	+17.048	25.524566				410.703368
11	764.449	24.449	-18.844	880.425	20.425	+17.627	224.288700				431.207013
7	745.247	5.247	-19.439	882.323	22.323	-5.924	423.936797			21.125698	
IX	745.010	5.010	-0.429	874.491	14.491	-16.549	7.231009			82.910490	
							887.658266	172.692502	252.525497	947.481261	
							694.975764				694.975764

Y₂ = 247.487882

面積計算書

工
区

プロ
ック

58-1

計
算
者

精
算
者

備
考

3. 高柳 328-2
4. 高柳 328-3

点	①	②	③	④	⑤	⑥	③ × ⑤		② × ⑥	
	X	X-(定数)	X _{n-1} -X _{n+1}	Y	Y-(定数)	Y _{n-1} -Y _{n+1}	+	-	+	-
	-108	-108.760		-39	-39.860					
Ⅰ	772.030	12.030	+9.919	862.377	3.377	-1.603		22.696463	19.284090	
Ⅱ	774.010	14.010	+3.821	863.083	3.083	+2.898		11.780143		40.600980
Ⅲ	775.851	15.851	+4.722	866.275	6.275	+15.930		29.630550		252.506430
Ⅳ	778.732	18.732	-11.402	879.013	19.013	+14.150	216.786226			265.057800
Ⅴ	764.449	4.449	-14.641	880.425	20.425	-14.327	299.062425		63.740923	
Ⅵ	764.091	4.091	+7.521	864.686	4.686	-17.048		25.524566	69.743368	
							55.828651	110.421722	152.768228	552.165210
							405.396929	Y ₂ = 202.6924645		405.396929
7										
10										
9										
8										

面積計算書

工区

ブロック

58-1

計算者



精算者

備考

備考

4. 高柳 328-3
5. 高柳 328-1

点	①	②	③	④	⑤	⑥	③ × ⑤		② × ⑥	
	X	X-(定数)	X _{n-1} -X _{n+1}	Y	Y-(定数)	Y _{n-1} -Y _{n+1}	+	-	+	-
7	745.247	5.247	+21.960	882.323	2.323	-13.700		51.013080	71.883400	
10	767.554	27.554	+23.312	880.118	0.118	+9.479		2.750816		261.184366
9	768.559	28.559	-21.960	891.802	11.802	+13.700	259.171920			391.258300
6	745.544	5.544	-23.312	893.818	13.818	-9.479	222.125216		53.025526	
							581.287136	58.768896	124.404266	652.442666
							527.533240			527.533240
							$\times \frac{1}{2} = 263.766620$			
10	767.554	7.554	+10.173	880.118	10.118	-12.789		102.930444	96.608106	
Ⅱ	778.732	18.732	+14.626	879.013	9.013	+10.492		131.824138		196.536144
Ⅲ	782.180	22.180	+2.291	890.610	20.610	+11.695		47.217510		259.395100
Ⅳ	791.023	21.023	-13.621	890.708	20.708	+1.192	282.063668			25.054416
9	768.559	8.559	-13.469	891.802	21.802	-10.590	293.651138		90.634810	
							575.742806	281.972062	187.244916	480.990660
							293.742744			293.742744
							$\times \frac{1}{2} = 146.871372$			

面積計算書

工区

ブロック

58-1

計算者



精算者



備考

5. 高野 328-1

6. 高野 327-1, 327-2

点	①	②	③	④	⑤	⑥	③ × ⑤		② × ⑥	
	X	X - (定数)	X _{n-1} - X _{n+1}	Y	Y - (定数)	Y _{n-1} - Y _{n+1}	+	-	+	-
10										
9										
8										
7										
6										
5										
4										
3										
2										
1										
10	-103	-108.740		-37	-37.800					
9	781.023	44.023	+37.165	890.708	90.708	+20.990			3271.162820	861.072770
8	782.759	42.759	-0.119	914.909	114.909	+26.143	13.662152			1117.818597
7	780.904	40.904	-4.387	916.851	116.851	+2.104	512.625307			86.062016
6	779.372	39.372	-34.667	916.912	116.912	-1.762	4052.988304			67.611464
5	746.237	6.237	-32.778	915.089	115.089	-23.094	3772.387042			144.037278
4	745.594	5.594	+34.786	893.818	93.818	-24.381		2267.552919	136.387314	
3								8351.663025	1134.715768	208.036056
2										2084.983323
1								1716.947267		1716.947267
										1/2 = 858.4736335

面積計算書

工区

ブロック

58-1

計算者

1982

経算者

1982

備考

スミキリⅡ

スミキリⅢ

点	①	②	③	④	⑤	⑥	③ × ⑤		② × ⑥	
	X	X-(定数)	X _{n-1} -X _{n+1}	Y	Y-(定数)	Y _{n-1} -Y _{n+1}	+	-	+	-
I	-108.767.670	-108.760 7.670	-0.224	-39.841.827	-39.940 1.927	-2.048	0.409248		15.708.160	
II	769.669	9.669	+2.223	841.786	1.796	+2.007		3.970278		19.405.683
Z	769.893	9.893	-1.999	863.834	3.834	+0.041	7.664.166			0.405.613
							9.073.614	3.970278	15.708.160	19.911.296
							4.103.136			4.103.136
								Σ = 2.051.568		
LL	-148 782.759	-108.750 2.759	+1.999	-39.914.808	-39.910 4.809	-0.048		9.611.192	0.132.432	
IR	782.903	2.903	-1.855	916.803	6.803	+2.043	12.619.565			5.930.829
IS	780.904	0.904	-0.144	916.851	6.851	-1.995	0.986.544		1.903.480	
							13.606.109	9.611.192	1.935.912	5.930.829
							3.994.917			3.994.917
								Σ = 1.997.458.5		

