

街区略図

工区

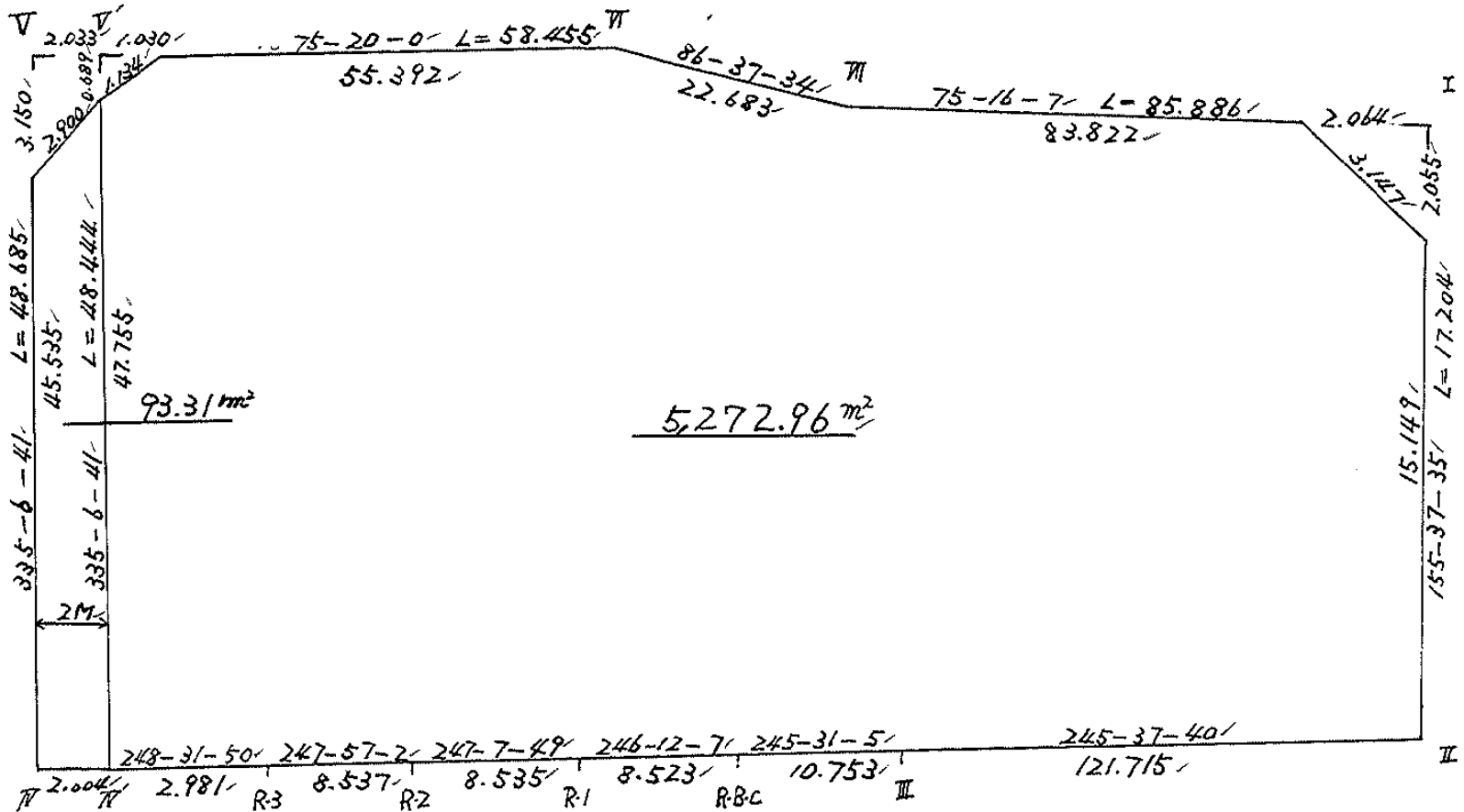
ブロック

57

記入者



点検者



面積計算書

工  
区

ブ  
ロ  
ック

37

計算者



精算者



備考

全体

点	①	②	③	④	⑤	⑥	③ × ⑤		② × ⑥	
	X	X-(定数)	Xn-1-Xn+1	Y	Y-(定数)	Yn-1-Yn+1	+	-	+	-
I	<sup>-148</sup> 835.337	<sup>-148.800</sup> 35.337	-6.169	<sup>-39</sup> 841.939	<sup>-39.800</sup> 41.939	-90.163	258.721691		3186.089931	
II	851.008	51.008	+65.898	834.839	34.839	+103.768		2295.820422		5292.998144
III	901.235	101.235	+54.683	945.707	145.707	+120.654		7967.695881		12214.407690
RBC	905.691	105.691	+7.895	955.493	155.493	+17.584		1227.617235		1858.470544
R.1	909.130	109.130	+6.756	963.291	163.291	+15.662		1103.193996		1709.194060
R.2	912.447	112.447	+6.522	971.155	171.155	+15.777		1116.272910		1774.076319
R.3	915.652	115.652	+5.029	979.068	179.068	+12.552		900.532972		1451.663904
IV	917.476	117.476	-42.339	983.707	183.707	+25.128	1777.970673			2951.936928
V	873.313	73.313	-58.964	<sup>-40</sup> 904.196	204.196	-36.061	12040.212944		2643.740093	
VI	858.512	58.512	-16.136	<sup>-39</sup> 947.646	147.646	-79.194	2382.415856		4633.799328	
VII	857.177	57.177	-23.175	925.002	125.002	-105.707	2896.721350		6044.009139	
							25356.242514	14611.133416	16507.638491	27252.747589
							10745.109098			10745.109098
				水路				1/2=5372.554549		
				5372.55-	93.31-	2.09-	4.19-	5272.96		

# 地 計 算

画地略図

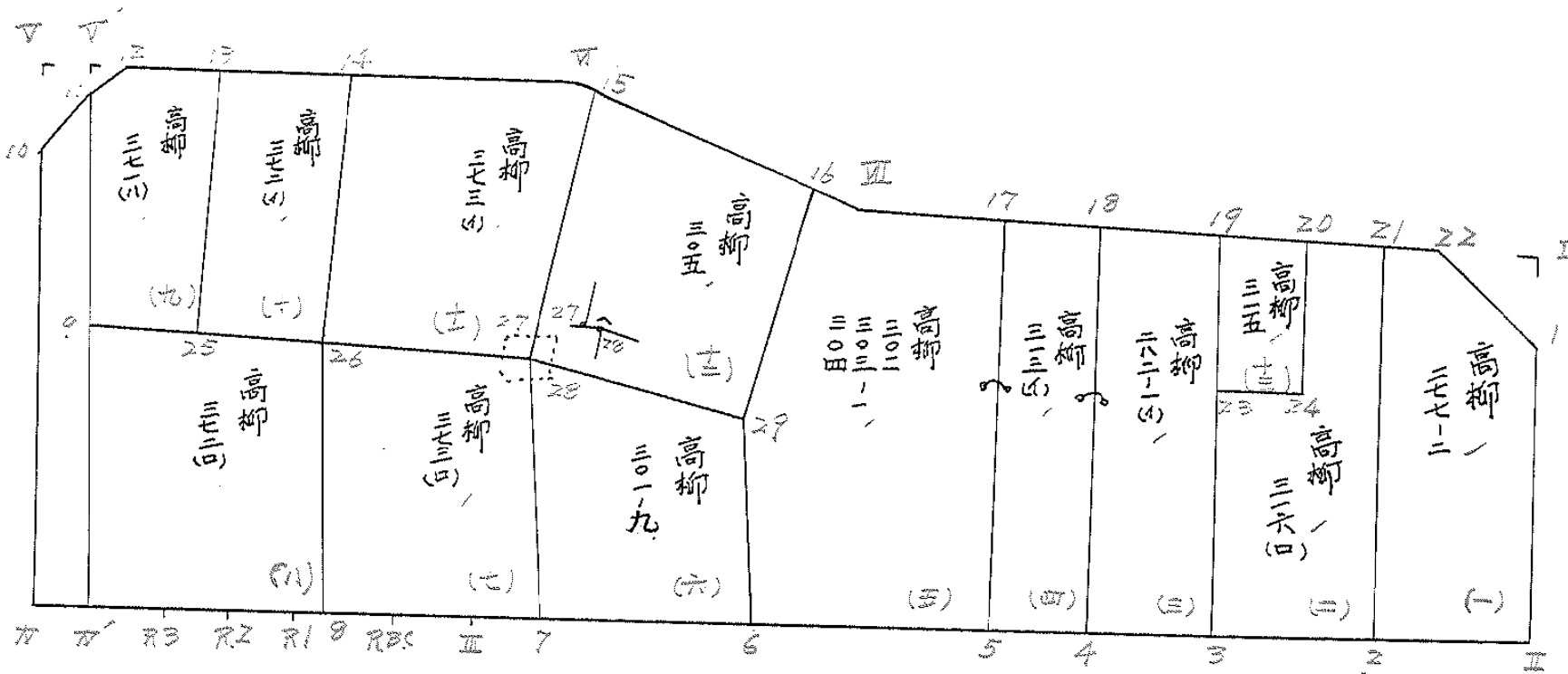
工区

ブロック

57

記入者

点検者



# 面積計算書

工  
区

ブ  
ロ  
ック

57

計  
算  
者



精  
算  
者



備  
考

高柳

(1) 277-21, (2) 316(14)

点	①	②	③	④	⑤	③ × ⑤		② × ⑥		
	X	X-(定数)	X <sub>n-1</sub> -X <sub>n+1</sub>	Y	Y-(定数)	+	-	+	-	
(一) 1	<sup>-148</sup> 837.209	<sup>-148,830</sup> 7.209	+ 15.146	<sup>-39</sup> 841.091	<sup>-39,830</sup> 1.091	- 9.086		167,984,286	65,573,066	
II 2	851.008	21.008	+ 18.485	834.839	4.839	+ 4.091		89,448,915	85,943,728	
2	855.694	25.694	- 12.744	845.182	15.182	+ 18.231	193,479,408		458,427,316	
21	838.264	8.264	- 19.832	853.070	23.070	- 1.247	457,526,240		10,305,208	
22	835.862	5.862	- 1.055	843.935	13.935	- 11.979	14,701,425		70,220,898	
							665,705,073	257,433,201	146,099,170	554,371,042
							408,271,892			408,271,892
								72 = 204,136,936		
(二) 21	<sup>-148</sup> 838.264	<sup>-148,830</sup> 8.264	A 16.388	<sup>-39</sup> 853.070	<sup>-39,840</sup> 13.070	- 11.852		214,191,160	97,944,928	
2	855.694	25.694	+ 21.423	845.182	5.182	+ 0.926		111,013,986	23,792,646	
3	859.687	29.687	- 4.922	853.996	13.996	+ 12.845	68,888,312		381,329,515	
23	850.772	20.772	- 11.249	858.027	18.027	- 1.092	202,785,723		22,583,026	
24	848.438	18.438	- 11.466	852.904	12.904	- 0.993	147,957,264		18,308,936	
20	839.306	9.306	- 10.174	857.034	17.034	A 0.166	173,303,916		1,544,796	
							592,935,215	225,205,146	138,936,886	406,666,956
							267,730,069			267,730,069
								72 = 123,865,036		

面積計算書						工区	ブロック	計算者	精算者	備考	高柳
	①	②	③	④	⑤	⑥	③ × ⑤	② × ⑥			
点	X	X-(定数)	X <sub>n-1</sub> -X <sub>n+1</sub>	Y	Y-(定数)	Y <sub>n-1</sub> -Y <sub>n+1</sub>	+	-	+	-	
≒) 19	<sup>-148</sup> 842.752	<sup>-148.840</sup> 0.758	+ 14.525	<sup>-39</sup> 862.556	<sup>-39.850</sup> 12.556	- 25.308		182.375900	19.183464		
3	859.687	19.687	+ 25.981	853.996	3.996	+ 7.006		103.820076		137.927122	
4	866.739	26.739	- 14.525	869.562	19.562	+ 25.308	284.138050			676.710612	
18	845.162	5.162	- 25.981	879.304	29.304	- 7.006	761.347224		36.164972		
							1045.485274	286.195976	55.348436	814.637734	
							759.289298			759.289298	
								1/2 = 379.644649			
(四) 18	<sup>-148</sup> 845.162	<sup>-148.840</sup> 5.162	+ 19.144	<sup>-39</sup> 879.304	<sup>-39.860</sup> 19.304	- 18.997		369.555776	98.062514		
4	866.739	26.739	+ 25.470	869.562	9.562	- 1.148		243.544140	30.696372		
5	870.632	30.632	- 19.144	878.156	18.156	+ 18.997	347.578464			581.916104	
17	847.595	7.595	- 25.470	888.559	28.559	+ 1.148	727.397730			8.719060	
							1074.976194	613.099916	128.758886	590.635164	
							461.876278			461.876278	
								1/2 = 230.938139			

# 面積計算書

工区: \_\_\_\_\_ プロック: \_\_\_\_\_ 計算者: 徳山 精算者: 高柳 備考: (五) 302, 303, 304 (六) 301-9...

点	①	②	③	④	⑤	⑥	③ × ⑤		② × ⑥	
	X	X-(定数)	X <sub>n-1</sub> -X <sub>n+1</sub>	Y	Y-(定数)	Y <sub>n-1</sub> -Y <sub>n+1</sub>	+	-	+	-
(五) 17	-148, 847.595	-148, 840, 7.595	+ 13.455	-39, 888.559	-39, 870, 18.559	-46.846			249.711345	355.795370
5	870.632	30.632	+ 42.871	878.156	8.156	+33.376			349.655876	1022.373632
6	890.466	50.466	+ 9.330	921.935	51.935	+ 48.479			484.553550	2446.541214
29	879.962	39.962	- 33.443	926.635	56.635	+ 5.541	1877.053805			221.429442
16	857.323	17.323	- 22.785	927.476	57.476	- 1.633	1309.590660			28.288459
10	857.177	17.177	- 9.728	925.002	55.002	-38.917	535.059456			168.477309
							3721.703921	1083.920771	1052.561138	3690.944288
							2637.783150			2637.783150
							x/2 = 1318.891575			
(六) 29	-148, 879.962	-148, 870, 9.962	+ 10.226	-39, 926.635	-39, 920, 6.635	- 24.513			67.849510	244.198506
6	890.466	20.466	+ 18.002	921.935	1.935	+ 11.852			34.833870	242.563032
7	897.964	27.964	- 10.226	938.487	18.487	+ 24.513	189.048062			685.481532
28	880.240	10.240	- 18.002	946.448	26.448	- 11.852	476.116896			121.364480
							665.164958	102.683380	365.562986	928.044564
							562.481578			562.481578
							x/2 = 281.240789			

面積計算書						工 区	フ ロ ック	57	計 算 者	精 算 者	備 考
点	①	②	③	④	⑤	⑥	③ × ⑤		② × ⑥		
	X	X-(定数)	X <sub>n-1</sub> -X <sub>n+1</sub>	Y	Y-(定数)	Y <sub>n-1</sub> -Y <sub>n+1</sub>	+	-	+	-	
(七) 28	-148 880.240	-148.880 0.240	+ 11.697	-37. 946.448	-37.730 16.448	- 30.575			192.392256	7.338000	
7	897.964	17.964	+ 20.995	938.487	8.487	- 0.741			178.184565	13.311324	
Ⅲ	901.235	21.235	+ 7.727	945.707	15.707	+ 17.006			121.367989	361.122410	
RBL	905.691	25.691	+ 6.197	955.493	25.493	+ 13.733			157.980121	352.814503	
8	907.432	27.432	- 19.424	959.440	29.440	+ 13.569	571.842560			372.224808	
25	886.267	6.267	- 27.192	969.062	39.062	- 12.992	1062.173904		81.420864		
							1634.016464	649.924931	102.070188	1086.161721	
							984.091533			984.091533	
									1/2 = 492.0457665		



面積計算書						工区	ブロック	計算者	精算者	備考
							57			(1) 高柳 372 (2) /
点	①	②	③	④	⑤	③ × ⑤		② × ⑥		
	X	X-(定数)	X <sub>n-1</sub> -X <sub>n+1</sub>	Y	Y-(定数)	+	-	+	-	
(11) 26	-148. 886.267	-148.880. .6.267	14.781	-37. 969.062	-37.950. 19.062	33.579		281.755422	210.439593	
8	907.432	27.432	22.863	959.440	9.440	5.771		215.826720	158.310072	
R.1	909.130	29.130	5.015	963.291	13.291	11.715		66.654365	341.257950	
R.2	912.447	32.447	6.522	971.155	21.155	15.777		137.972910	511.916319	
R.3	915.652	35.652	4.296	979.068	29.068	10.687		124.876128	381.012924	
π'	916.743	36.743	23.001	981.842	31.842	13.951	732.397842		512.601592	
9	892.651	12.651	30.476	993.019	43.019	12.780	1311.047044		161.679780	
							2043.444886	827.085545	530.429445	1746.788786
							1216.359341			1216.359341
								1/2 = 608.1796705		

# 面積計算書

工  
区

ブ  
ロ  
ック

57

計  
算  
者

精  
算  
者

備  
考

高柳

(大) 371 (小) / (大) 372 (小)

点	①	②	③	④	⑤	⑥	③ × ⑤		② × ⑥	
	X	X-(定数)	X <sub>n-1</sub> -X <sub>n+1</sub>	Y	Y-(定数)	Y <sub>n-1</sub> -Y <sub>n+1</sub>	+	-	+	-
(2) 13	-148. 868.917	-148.860 8.917	+ 17.142	-39. 987.399	-39.980 7.399	- 19.367			126.833658	172.695539
25	829.679	29.679	+ 23.734	981.866	1.866	+ 5.620			44.287644	166.795980
9	892.651	32.651	- 16.256	993.019	13.019	+ 20.074	211.636864			655.426174
11	873.423	13.423	- 20.114	-400 001.940	21.940	+ 8.214	441.301160			110.256522
12	872.537	12.537	+ 4.506	-400 001.233	21.233	- 14.541	95.675898		182.300517	
							748.613922	171.121302	354.996056	932.428676
							577.492620			577.492620
									1/2 = 288.746310	
(4) 14	-148 865.559	-148.860 5.559	+ 17.350	-39. 974.571	-39.960 14.571	- 12.337			252.806850	101.935383
26	886.267	26.267	+ 24.120	969.062	9.062	+ 7.295			218.575440	191.617765
25	889.679	29.679	+ 17.350	981.866	21.866	+ 12.337	379.375100			544.223823
13	868.917	8.917	+ 24.120	987.399	27.399	- 7.295	660.263880		65.049515	
							1040.238980	471.382290	166.984898	735.841588
							568.856690			568.856690
									1/2 = 284.428345	

# 面積計算書

工  
区

ブ  
ロ  
ック

57

計  
算  
者



精  
算  
者



備  
考

高柳

(±) 373 M / (±) 305

点	①	②	③	④	⑤	③ × ⑤		② × ⑥		
	X	X-(定数)	X <sub>n-1</sub> -X <sub>n+1</sub>	Y	Y-(定数)	Y <sub>n-1</sub> -Y <sub>n+1</sub>	+	-	+	-
(±) 15	748. 858.493	-148.850 8.493	+ 21.774	-39. 947.327	-37.940 7.327	1.026			159.538098	8713 8/8
27	880.286	30.286	+ 27.774	946.620	6.620	+ 21.735			183.863880	658.2662/0
26	886.267	36.267	- 14.727	969.062	29.062	+ 27.951	127.996074			1013.698917
14	865.559	15.559	- 27.755	974.571	34.571	- 21.416	959.518105			333.211544
Ⅳ	858.512	8.512	- 7.066	947.646	7.646	- 27.244	54.026636			221.900928
							1441.540815	343.401978	573.826290	1671.965127
							1098.138837			1098.138837
									1/2 = 549.0694185	
(±) 16	-148. 857.323	-148.850 7.323	+ 21.469	-37. 927.476	-37.920 7.476	20.692			160.502244	151.527516
29	879.962	29.962	+ 22.917	926.635	6.635	+ 18.972			182.054295	568.489064
28	880.240	30.240	+ 0.324	946.448	26.448	+ 19.985			8.569152	604.346400
27	880.286	30.286	- 21.747	946.620	26.620	+ 0.879	578.905140			26.62/294
15	858.493	8.493	- 22.963	947.327	27.327	- 19.144	627.509901			162.589992
							1206.415041	321.125691	214.117508	1199.406858
							885.289350			885.289350
									1/2 = 442.644675	

# 面積計算書

工  
区

フ  
ロ  
ン  
ク

57

計  
算  
者



精  
算  
者



備  
考

田高柳315

十三

点	①	②	③	④	⑤	⑥	③ × ⑤		② × ⑥	
	X	X-(定数)	X <sub>n-1</sub> -X <sub>n+1</sub>	Y	Y-(定数)	Y <sub>n-1</sub> -Y <sub>n+1</sub>	+	-	+	-
20	<sup>-148</sup> 839.306	<sup>-148.830</sup> 9.306	+ 7.680	<sup>-39</sup> 857.024	<sup>-39.850</sup> 7.034	- 9.652		54.021120	89.821512	
24	848.438	18.438	+ 11.466	852.904	2.904	+ 0.993		23.297264		18.308934
23	850.772	20.772	- 7.680	858.027	8.027	+ 9.652	61.647360			200.491344
19	840.758	10.758	+ 11.466	862.556	12.556	- 0.993	143.967096		10.682694	
							205.614456	87.318384	100.504206	218.800278
							118.296072			118.296072
								x 1/2 = 59.148036		

# 面積計算書

工  
区

フ  
ロ  
ック

57

計  
算  
者

積  
算  
者

備  
考

隅切 I, V

(I)

(V)

点	①	②	③	④	⑤	⑥	③ × ⑤		② × ⑥	
	X	X-(定数)	X <sub>n-1</sub> -X <sub>n+1</sub>	Y	Y-(定数)	Y <sub>n-1</sub> -Y <sub>n+1</sub>	+	-	+	-
I	-148 835.337	-148.830 5.337	+ 1.347	-39 841.939	-39.840 1.939	- 2.844		2.611833	15.178428	
1	837.209	7.209	+ 0.525	841.091	1.091	+ 1.996		0.572775		14.389164
22	835.862	5.862	- 1.872	843.935	3.935	+ 0.848	7.366320			4.970976
							7.366320	3.184608	15.178428	19.360140
							4.181712			4.181712
								$\frac{1}{2} = 2.090856$		
								<u>2.09</u>		
12	-148 872.537	-148.870 2.537	+ 0.110	-40 001.233	-40.001 0.233	- 2.256		0.025630	5.723472	
11	873.423	3.423	+ 0.633	001.940	0.940	+ 1.638		0.415020		5.606874
10	876.170	6.170	- 0.110	002.871	1.871	+ 2.256	0.205810			13.919520
V	873.313	3.313	- 0.633	004.196	4.196	- 1.638	11.611068		5.426694	
							11.816878	0.440650	11.150166	12.526394
							8.376228			8.376228
								$\frac{1}{2} = 4.188114$		
								<u>4.19</u>		

# 面積計算書

工区

ブロック

57

計算者

(印)

精算者

(印)

備考

水路105線-2M

点	①	②	③	④	⑤	⑥	③ × ⑤		② × ⑥	
	X	X-(定数)	X <sub>n-1</sub> -X <sub>n+1</sub>	Y	Y-(定数)	Y <sub>n-1</sub> -Y <sub>n+1</sub>	+	-	+	-
11	-108.873	-148.870	40.573	-40.001.940	-39.980	21.940			290.171620	71.982267
11'	916.743	46.743	44.053	39.981.942	1.842	18.233			81.145626	852.265119
11''	917.476	47.476	40.573	993.707	3.707	21.029	150.404111			998.372804
10	876.170	6.170	44.053	40,002.871	22.871	18.233	1007.536163			112.487610
							1157.940274	971.317246	924,247386	1110.870414
							186.623028			186.623028
								1/2 = 93.311514		
								93.31		

計年 月 算日	計 算 者		檢 查 者	
---------------	-------------	---	-------------	---

B. NO. 57

各筆面積計算書

地番	算式	隅切	地積	摘要
1	高柳 277-2		204 131	
2	" 316 (口)		133 86	✓
3	" 282-1 (イ)		379 64	✓
4	" 313 (イ)		230 93	✓
5	" 302, 303-1, 304		1,318 89	✓
6	" 301-9 ;		281 24	✓
7	" 373 (ア)		492 04	✓
8	" 372 (口)		608 17	✓
9	" 371 (イ)		288 74	✓
10	" 372 (イ)		284 42	✓
11	" 373 (イ)		549 06	✓
12	" 305		442 64	✓
13	" 315		59 14	✓
		合計	5,272 90	良地13筆
		金体	5,272 96	
			-0 06	
	水路10筆線2M		93 31	