

街区略図

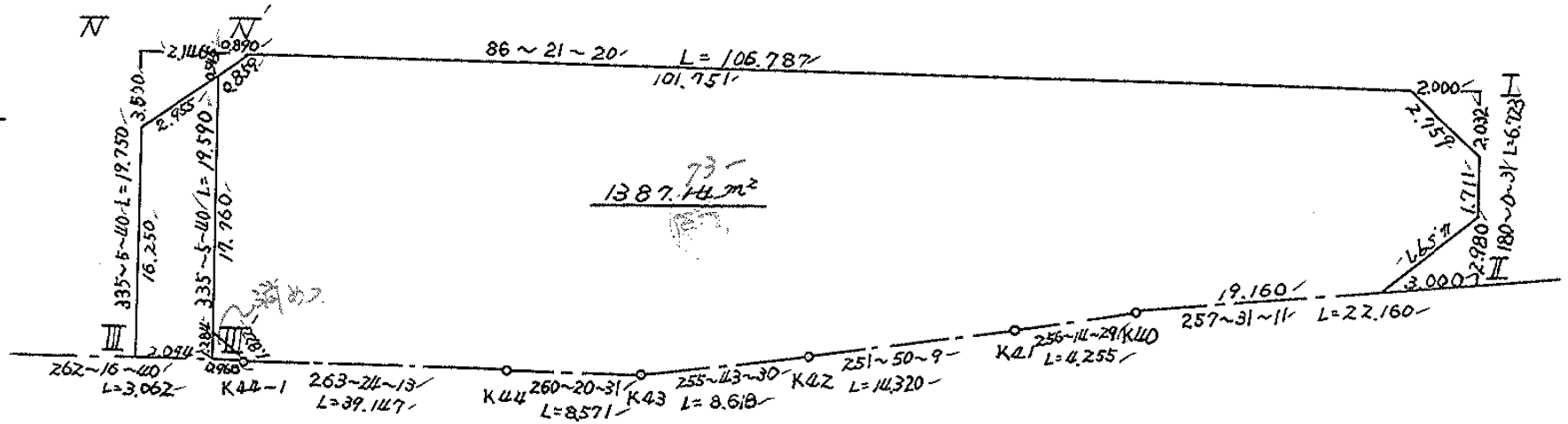
工区

ブロック

56-2

記入者

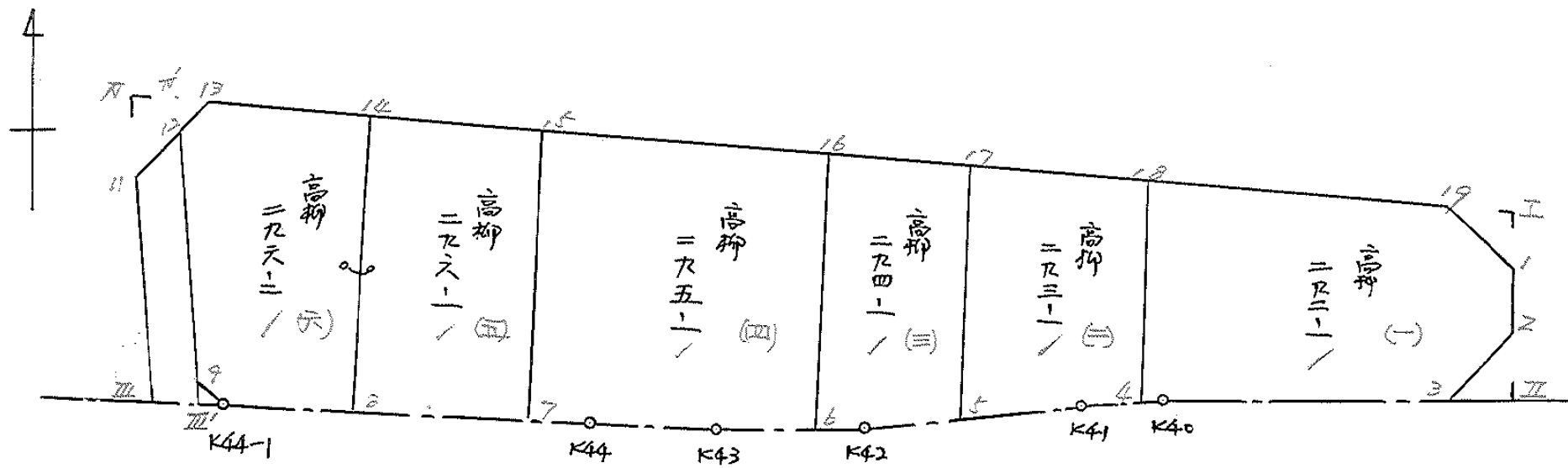
点検者





# 画地計算

画地略図	工区	ブロック	5b-2	記入者	点検者
------	----	------	------	-----	-----



# 面積計算書

工区

ブロック

56-2

計算者

計

精算者

徳山

備考

1. 高柳 292-1  
2. " 293-1

点	①	②	③	④	⑤	⑥	③ × ⑤		② × ⑥	
	X	X-(定数)	X <sub>n-1</sub> -X <sub>n+1</sub>	Y	Y-(定数)	Y <sub>n-1</sub> -Y <sub>n+1</sub>	+	-	+	-
1	-148, 967.238	-148, 960- 7.238	+3.616	-39 851.767	-39, 850 1.767	-1.995		6.389472	14.439810	
2	968.949	8.949	+5.237	851.768	1.768	+2.951		9.259216		26.408499
3	972.475	12.475	+7.011	854.718	4.718	+21.790		33.077898		271.830250
K40	975.960	15.960	+3.781	873.558	23.558	+20.049		29.072798		319.982040
4	976.256	16.256	-9.250	874.767	24.767	+1.817	229.0916750			29.537152
18	966.710	6.710	-10.923	875.375	25.375	-21.004	277.171125		140.936840	
19	965.333	5.333	+0.528	853.763	3.763	-23.608		1.986864	125.901464	
							506.265875	139.786048	281.278114	647.757941
							366.479827			366.479827
								$\times \frac{1}{2} = 183.2399135$		
4	-148 976.256	-148, 960- 16.256	+10.262	-39 874.767	-39, 870- 4.767	+2.316		48.918954		37.648896
K41	976.972	16.972	+3.213	877.691	7.691	+10.535		24.711183		178.800020
5	979.469	19.469	-9.581	885.302	15.302	+8.376	146.608462			163.072344
17	967.391	7.391	-12.759	886.067	16.067	-9.927	204.998853		73.370457	
18	966.710	6.710	+8.865	875.375	5.375	-11.300		47.649375	75.823000	
							351.607315	121.279512	149.193457	379.521260
							230.327803			230.327803

$\times \frac{1}{2} = 115.1639015$

三和測量建設株式会社

# 面積計算書

工  
区

ブ  
ロ  
ック

56-2

計  
算  
者



精  
算  
者



備  
考

3, 高柳 294-1  
4, " 295-1

点	①	②	③	④	⑤	⑥	③ × ⑤		② × ⑥	
	X	X-(定数)	X <sub>n-1</sub> -X <sub>n+1</sub>	Y	Y-(定数)	Y <sub>n-1</sub> -Y <sub>n+1</sub>	+	-	+	-
5	<sup>-148</sup> 979.469	<sup>-148,960</sup> 19.469	+ 14.045	<sup>-39</sup> 885.302	<sup>-39,880</sup> 5.302	+ 5.230				
K42	981.436	21.436	+ 2.563	891.297	11.297	+ 8.339				
6	982.032	22.032	- 13.505	893.641	13.641	+ 3.246	184.221705			71.515872
16	967.931	7.931	- 14.641	894.543	14.543	- 7.574	212.924063			60.069394
17	967.391	7.391	+ 11.538	886.067	6.067	+ 9.241				
							397.145768	173.421847	128.369625	352.093546
							223.723921			223.723921
							x/2 = 111.8619605			
6	<sup>-148</sup> 982.032	<sup>-148,960</sup> 22.032	+ 15.630	<sup>-39</sup> 893.641	<sup>-39,880</sup> 3.641	+ 5.106				
K43	983.561	23.561	+ 2.967	899.649	9.649	+ 14.458				
K44	984.999	24.999	+ 1.836	908.099	18.099	+ 11.889				
7	985.397	25.397	- 15.917	911.538	21.538	+ 4.515	342.820346			114.667455
15	969.082	9.082	- 17.466	912.614	22.614	- 16.995	394.976124			154.348590
16	967.931	7.931	+ 12.950	894.543	4.543	- 18.973				
							737.796470	177.599027	304.823453	865.020896
							560.197443			560.197443
							x/2 = 280.0987215			

# 面積計算書

工区

ブロック

56-2

計算者

計

箱算者

計

備考

5. 1877MP 296-1

6. " 296-2

点	①	②	③	④	⑤	⑥	③ × ⑤		② × ⑥	
	X	X-(定数)	X <sub>n-1</sub> -X <sub>n+1</sub>	Y	Y-(定数)	Y <sub>n-1</sub> -Y <sub>n+1</sub>	+	-	+	-
7	-148 985.397	-148,960- 25.397	+18.501	-3P. 911.538	-39,910- 1.538	+17.831			28,454,538	452,853,907
8	987.583	27.583	-15.107	930.445	20.445	+20.044	308,862,615			552,873,652
14	970.290	10.290	-18.501	921.582	21.582	-17.831	399,288,582		183,480,990	
15	969.082	9.082	+15.107	912.614	2.614	-20.044		39,489,698	182,039,608	
							708,151,197	67,944,236	365,520,598	1005,727,559
							640,206,961			640,206,961
							X <sub>1/2</sub> = 320,103,480.5			
8	-148 987.583	-148,970- 17.583	+19.206	-3P. 930.445	-39,930- 0.445	+15.405			8,546,670	270,866,115
KAA-1	989.496	19.496	+0.878	946.987	16.987	+18.042			14,914,586	351,746,832
9	988.461	18.461	-17.143	948.487	18.487	+8.979	316,922,641			165,761,319
12	972.353	2.353	-16.660	955.966	25.966	+6.821	432,593,560			16,049,813
13	971.801	1.801	-2.063	955.308	25.308	-24.384	52,210,404		43,915,584	
14	970.290	0.290	+15.782	931.582	1.582	-24.863		24,967,124	7,210,270	
							801,726,605	48,428,380	51,125,854	804,424,079
							753,298,225			753,298,225
							X <sub>1/2</sub> = 376,649,112.5			
							+0.59			
							377.23			







# 面積計算書

工  
区

ブ  
ロ  
ック

56-2

計  
算  
者

精  
算  
者

備  
考

永路10号線2010

点	①	②	③	④	⑤	⑥	③ × ⑤		② × ⑥	
	X	X - (定数)	X <sub>n-1</sub> - X <sub>n+1</sub>	Y	Y - (定数)	Y <sub>n-1</sub> - Y <sub>n+1</sub>	+	-	+	-
Ⅲ	-148. 989.907	-148, 970 19.907	-14.458	-39 950.021	-39, 940 10.021	+8.918	144.883.618			177.530.628
11	975.168	5.168	-17.554	956.864	16.864	+5.945	296.030.656			30.723.760
12	972.353	2.353	+14.458	955.966	15.966	-8.918		230.836.428	20.984.054	
Ⅲ'	989.626	19.626	+17.554	947.946	7.946	-5.945		139.484.084	116.676.570	
							440.914.274	370.320.512	137.660.624	208.254.388
							70.593.762			70.593.762
							x/2 = 35.296.881			

