

街区略図

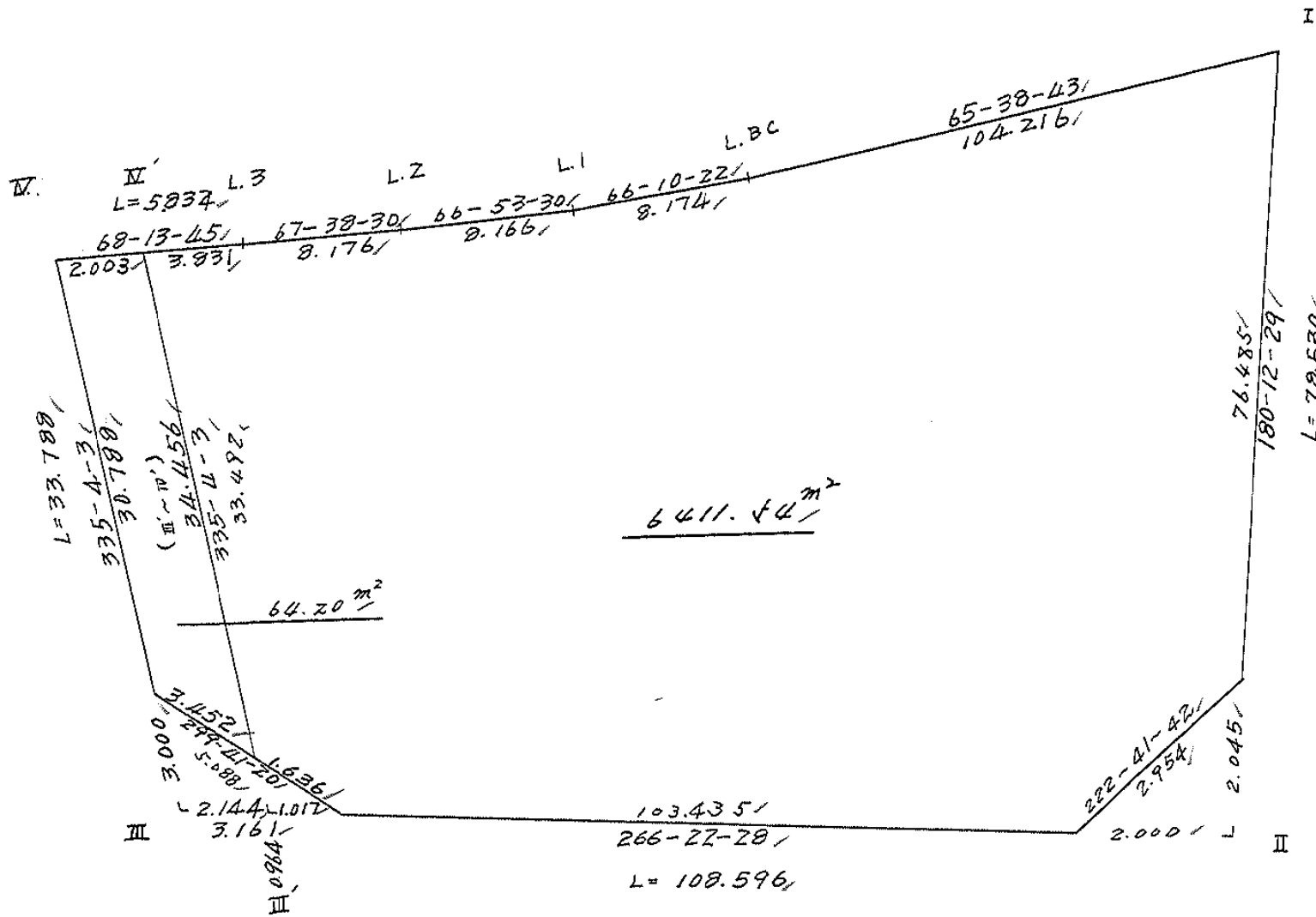
工区

ブロック

56-1

記入者

点検者



# 面積計算書

工  
区

ブ  
ロ  
ック

56-1

計  
算  
者



精  
算  
者



備  
考

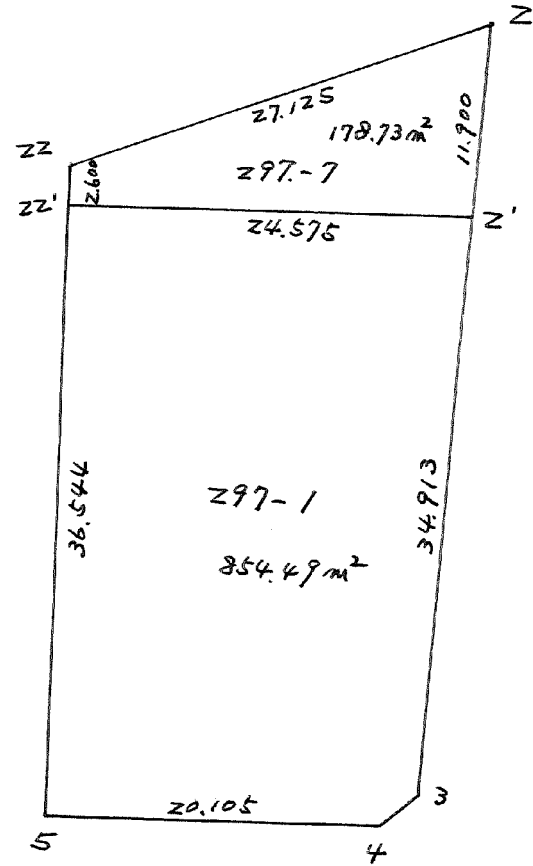
全面積


点	①	②	③	④	⑤	⑥	③ × ⑤		② × ⑥			
	X	X - (定数)	X <sub>n-1</sub> - X <sub>n+1</sub>	Y	Y - (定数)	Y <sub>n-1</sub> - Y <sub>n+1</sub>	+	-	+	-		
I	892.702	82.702	+ 35.552	851.476	51.476	- 94.657			1930.074752	2828.323216		
II	961.231	161.231	+ 85.396	851.761	51.761	+ 108.664			4420.182356	17520.005384		
III	968.098	168.098	- 23.772	960.140	160.140	+ 122.622	3806.848080			20612.512956		
IV	937.459	137.459	- 32.802	974.383	174.383	+ 8.827	5722.111166			1213.350593		
L.3	935.296	135.296	- 5.273	968.967	168.967	- 12.977	890.962996			1755.736192		
L.2	932.186	132.186	- 6.315	961.406	161.406	- 15.072	1019.278890			1992.307392		
L.1	928.981	128.981	- 6.507	953.895	153.895	- 14.988	1001.394765			1933.167228		
L.BC	925.679	125.679	- 46.279	946.418	146.418	- 102.419	6776.078622			12871.917501		
									19214.674454	6250.257108	26381.451527	39345.868933
									12964.417406			12964.417406
									× 1/2 = 6482.208703			
					*路	II	III					
				6482.20	(64.20 + 2.04 + 4.42)					= 6411.64		

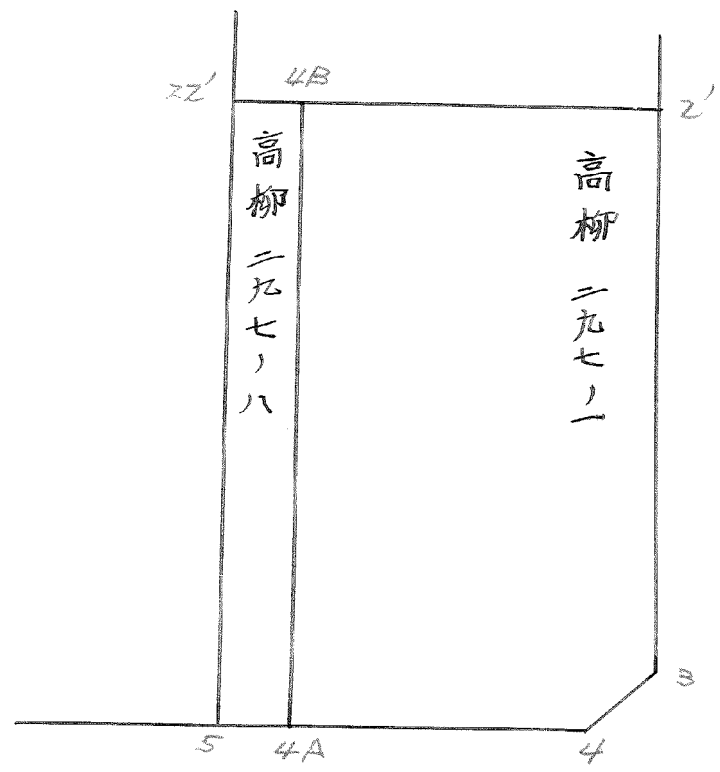
# 画地計算



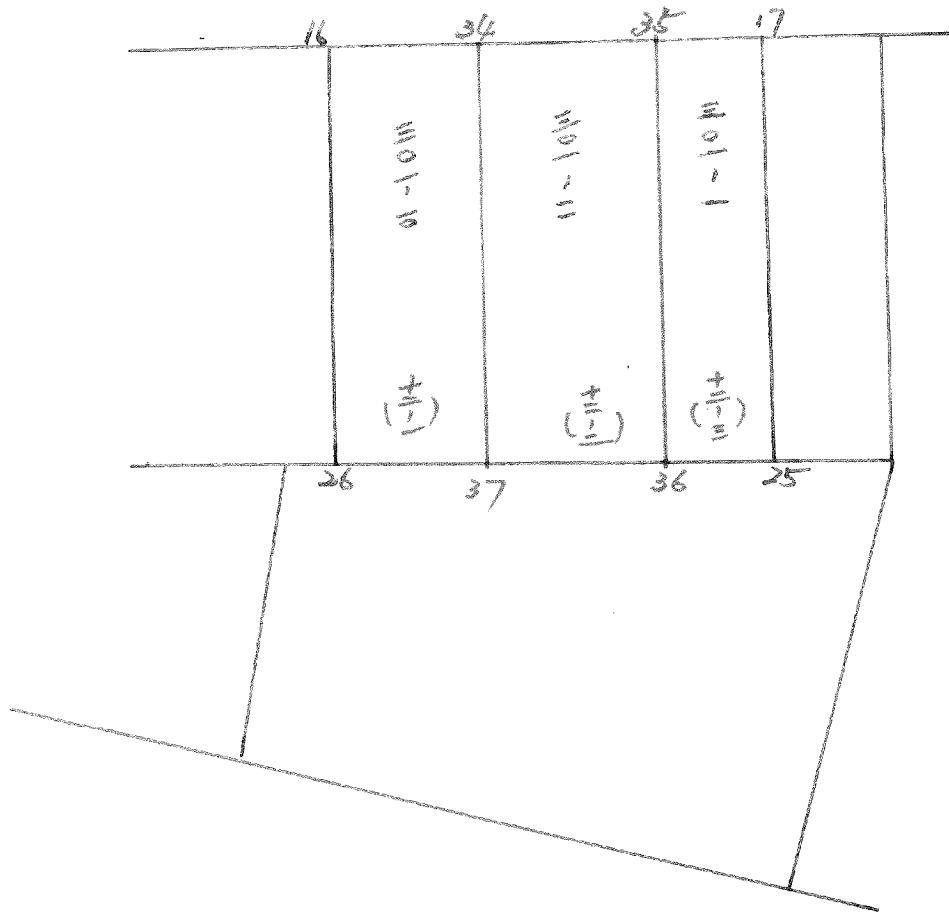
BN0, 56-1



略	図	工区	ブロック	56-1	記入者		点検者
---	---	----	------	------	-----	---	-----



BNO. 56-1 分割計算



# 面積計算書

工  
区

フ  
ロ  
ック

56-1

計  
算  
者

(S)

精  
算  
者

(S)

備  
考

(1) 保 561-1号  
(2) 高柳 297-1 (4)

点	①	②	③	④	⑤	⑥	③ × ⑤		② × ⑥	
	X	X-(定数)	X <sub>n-1</sub> -X <sub>n+1</sub>	Y	Y-(定数)	Y <sub>n-1</sub> -Y <sub>n+1</sub>	+	-	+	-
I	-148. 882.702	-148.880.0 2.702	+12.357	-39. 851.476	-39.850.0 1.476	-12.239		18.238932	33.069778	
1	900.629	20.629	+20.413	851.541	1.541	+5.555		31.456433		114.594095
23	903.115	23.115	-12.357	857.031	7.031	+12.239	86.882067			282.904485
20	888.272	8.272	-20.413	863.780	13.780	-5.555	281.291140		45.950960	
							368.173207	49.695365	79.020738	397.498580
							318.477842			318.477842
								1/2 = 159.238921		
1	-148. 900.629	-148.900.0 0.629	-1.467	-39. 851.541	-39.850.0 1.541	-29.131	2.260647		18.323399	
2	912.374	12.374	+22.934	851.584	1.584	+24.753		36.327456		306.293622
22	923.563	23.563	+1.467	876.294	26.294	+29.131		38.573298		686.413753
21	913.841	13.841	-22.934	880.715	30.715	-24.753	704.417810		342.606273	
							706.678457	74.900754	360.929672	992.707375
							631.777703			631.777703
								1/2 = 315.8888515		



# 面積計算書

工区

ブロック

56-1

計算者

精算者

備考

(3) 297-1 (ロ)

(4) 297-1 (ウ)

点	①	②	③	④	⑤	⑥	③ × ⑤	② × ⑥
	X	X - (定数)	X <sub>n-1</sub> - X <sub>n+1</sub>	Y	Y - (定数)	Y <sub>n-1</sub> - Y <sub>n+1</sub>	+ -	+ -
	-148.	-148.910.0		-39.	-39.850.0			
2	977.274	2.374	+ 25.623	851.484	1.584	- 24.540	56.426832	48.257960
3	959.186	49.186	+ 48.983	851.754	1.754	+ 2.173	85.716182	106.88178
4	961.357	51.357	+ 3.443	853.757	3.757	+ 22.068	12.734351	1133.346276
5	962.629	52.629	- 37.794	873.822	22.822	+ 22.437	900.328668	1186.099773
20	923.463	13.463	- 50.255	876.294	26.294	- 22.228	1221.404970	301.613994
							2221.733620	278365359, 871954
							2066.454273	2426.327227
								2066.454273
								$Y_2 = 1033.227636$
	-148.	-148.920.0		-39.	-39.870.0			
22	923.463	3.463	+ 28.009	876.294	6.294	- 26.891	176.288646	98.812633
5	962.629	42.629	+ 40.652	873.822	3.822	+ 22.556	155.371944	961.539724
6	964.215	44.215	- 28.009	898.850	28.850	+ 26.891	808.059650	1189.984565
27	934.620	14.620	- 40.652	900.713	20.713	- 22.556	1248.44876	329.768720
							2056.604526	331.660590
							425.581353	2150.421289
							1724.943936	1724.943936
								$Y_2 = 862.471968 \text{ m}^2$

# 面積計算書

工  
区

ブ  
ロ  
ック

56-1

計  
算  
者

精  
算  
者

備  
考

297-7

点	①	②	③	④	⑤	⑥	⑧ × ⑤		② × ⑥	
	X	X - (定数)	X <sub>n-1</sub> - X <sub>n+1</sub>	Y	Y - (定数)	Y <sub>n-1</sub> - Y <sub>n+1</sub>	+	-	+	-
ZZ	-148.923.563	<sup>-148.900</sup> 23.563	-13.784	-39.876.294	<sup>-39.850</sup> 26.294	-24.546	362.436496		578.377398	
Z	-148.912.374	12.374	+0.711	-39.851.584	1.584	-24.667		1.126224	305.229458	
Z'	-148.924.274	24.274	+13.784	-39.851.627	1.627	+24.546		22.426568		595.829604
ZZ'	-148.926.158	26.158	-0.711	-39.876.130	26.130	+24.667	18.578430			645.239386
							381.014926	23.552.792	883.606856	1241.068990
							357.462134			357.462134
								$\times \frac{1}{2} = 178.73$		

面積計算書

工区

ブロック

56-1

計算者



精算者

備考

高柳 297-8

高柳 297-1

点	①	②	③	④	⑤	⑥	③ × ⑤		② × ⑥	
	X	X-(定数)	X <sub>n-1</sub> -X <sub>n+1</sub>	Y	Y-(定数)	Y <sub>n-1</sub> -Y <sub>n+1</sub>	+	-	+	-
4B	<del>-148,</del> 925.973	<del>-148,920-</del> 5.973	+36.318	<del>-39</del> 873.719	<del>-39,870-</del> 3.719	-4.721		135.066642	28.198533	
4A	962.476	42.476	+36.6586	871.409	1.409	+0.103		51.648304		4.375028
5	962.629	42.629	-36.318	873.822	3.822	+4.721	198.807396			201.251509
ZZ'	926.158	6.158	-36.656	876.130	6.130	-0.103	224.701280		0.634274	
							363.508676	186.714946	28.832807	205.626537
							176.793730			176.793730
							x/2 = 89.396865			
							= 88.39			
Z'	<del>-148,</del> 924.274	<del>-148,920</del> 4.274	+33.213	<del>-39</del> 851.627	<del>-39,850-</del> 1.627	-21.965		54.037551	93.878410	
3	959.186	39.186	+37.083	851.754	1.754	+2.130		65.043582		88.466180
4	961.357	41.357	+3.290	853.757	3.757	+19.655		12.360530		812.871825
4A	962.476	42.476	-35.384	871.409	21.409	+19.962	757.536056			847.905912
4B	925.973	5.973	-38.202	873.719	23.719	-19.782	906.113238		118.157886	
							1663.649294	131.441663	212.036296	1744.243927
							1532.207631			1532.207631
							x/2 = 766.1038155			
							= 766.10			
	854.49 - 88.39 =		766.10							

# 面積計算書

工  
区

ブ  
ロ  
ック

56-1

計  
算  
者

精  
算  
者

備  
考

(4) 高柳298-10)

(6) " 299-10)

点	①	②	③	④	⑤	⑥	③ × ⑤		② × ⑥	
	X	X-(定数)	X <sub>n-1</sub> -X <sub>n+1</sub>	Y	Y-(定数)	Y <sub>n-1</sub> -Y <sub>n+1</sub>	+	-	+	-
27	-148. 934.620	-148.930.0 4.620	+15.437	-39. 900.713	-39.890.0 10.713	-39.140		165.376581	153.060600	
6	964.215	34.215	+31.624	898.850	8.850	+30.173		279.872400		1032.369195
7	966.244	36.244	-15.437	930.886	40.886	+33.130	631.157182			1200.763720
30	948.778	18.778	-31.624	931.980	41.980	-30.173	1327.575520		566.588594	
							1958.732702	445.248981	719.649194	2233.132915
							1513.483721			1513.483721
								1/2 = 756.7418605		
30	-148. 948.778	-148.940.0 8.778	+12.924	-39. 931.980	-39.930.0 1.980	-11.124		25.589520	97.646472	
7	966.244	26.244	+18.118	930.886	0.886	+9.185		16.052548		241.051140
8	966.896	26.896	-12.924	941.165	11.165	+11.124	144.296460			299.191104
31	953.320	13.320	-18.118	942.010	12.010	-9.185	217.597180		122.344200	
							361.893640	41.642068	219.990672	540.242244
							320.251572			320.251572
								1/2 = 160.125786		

# 面積計算書

工  
区

フ  
ロ  
ン  
ク

56-1

計  
算  
者

精  
算  
者

備  
考

① 高柳 210 ㍍  
② " 374-㍍

点	①	②	③	④	⑤	⑥	③ × ⑤		② × ⑥	
	X -148,	X-(定数) -148,930	X <sub>n-1</sub> -X <sub>n+1</sub>	Y -39,	Y-(定数) -39,940	Y <sub>n-1</sub> -Y <sub>n+1</sub>	+	-	+	-
31	953.320	3.320	+ 5.048	942.010	2.010	- 19.678		10.146480	65.330960	
8	966.896	16.896	+ 14.578	941.165	1.165	+ 14.975		16.983370		253.017600
9	967.898	17.898	+ 0.192	956.985	16.985	+ 17.242		3.261120		308.597316
10	967.088	17.088	- 6.050	958.407	18.407	+ 3.858	111.362350			65.925506
33	961.848	11.848	- 13.768	960.843	20.843	- 16.397	286.966424		194.271656	
							398.328774	30.390970	259.602616	627.540420
							367.937804			367.937804
								$\frac{1}{2} = 183.968902$		
13	930.467	0.467	+ 23.020	957.377	17.377	- 15.232		400.018540	7.113344	
32	955.206	25.206	+ 31.381	946.174	6.174	+ 3.466		193.746294		87.363996
33	961.848	31.848	- 18.489	960.843	20.843	+ 26.351	385.366227			839.226648
IV'	936.717	6.717	- 26.552	972.525	32.525	+ 8.124	863.603800			54.568908
L3	935.296	5.296	- 4.531	968.967	28.967	- 11.119	131.249477		58.886224	
L2	932.186	2.186	- 4.829	961.406	21.406	- 11.590	103.369574		25.335740	
							1483.589078	593.764834	91.335308	991.159552
							889.824244			889.824244
								$\frac{1}{2} = 444.912122$		

# 面積計算書

工  
区

ブ  
ロ  
ック

56-1

計  
算  
者

精  
算  
者

備  
考

(9) 高柳 399-10

(10) 299-2 300

点	①	②	③	④	⑤	⑥	③ × ⑤		② × ⑥	
	X	X - (定数)	X <sub>n-1</sub> - X <sub>n+1</sub>	Y	Y - (定数)	Y <sub>n-1</sub> - Y <sub>n+1</sub>	+	-	+	-
	-148	148.920		-39	39.920					
14	920.652	0.652	+ 19.561	935.312	15.312	- 22.252		299.518032	14.508304	
29	945.240	25.240	+ 34.554	924.166	4.166	+ 10.862		143.951964		274.156880
32	955.206	35.206	- 14.773	946.174	26.174	+ 33.211	386.668502			1169.226466
13	930.467	10.467	- 26.225	957.377	37.377	+ 7.721	980.211825			80.815707
L1	928.981	8.981	- 4.788	953.895	33.895	- 10.959	162.289260		98.422779	
LBC	925.679	5.679	- 8.329	946.418	26.418	- 18.583	220.035522		105.532257	
							1749.205109	443.469996	218.463940	1524.199053
							1305.735113			1305.735113
									$\frac{1}{2} = 652.8675565 \text{ m}^2$	
15	-148	148.910		-39	39.910					
	916.223	6.223	+ 20.157	925.528	15.528	- 20.933		312.997896	130.266059	
28	940.809	30.809	+ 29.017	914.379	4.379	- 1362		127.065443	4.961858	
29	945.240	35.240	- 20.157	924.166	14.166	+ 20.933	285.544062			737.678920
14	920.652	10.652	- 29.017	935.312	25.312	+ 1.362	734.478344			14.508024
							1020.022366	440.063339	172.227917	752.186944
							579.959027			579.959027
									$\frac{1}{2} = 289.9795135 \text{ m}^2$	

# 面積計算書

工区

ブロック

f6-1

計算者

(13)

精算者

(12)

備考

(13) 高柳 301-4 (14) 高柳  
301-6 301-8  
301-7

点	①	②	③	④	⑤	⑥	③ × ⑤		② × ⑥	
	X	X-(定数)	X <sub>n-1</sub> -X <sub>n+1</sub>	Y	Y-(定数)	Y <sub>n-1</sub> -Y <sub>n+1</sub>	+	-	+	-
18	-148.888.888	-148.888.0	+23.247	-39.887.467	-39.870.0	-14.093		406.055349	14.008442	
22	923.463	24.463	+25.893	876.294	6.294	-8.248		162.970542	210.843624	
25	924.887	26.887	-23.247	879.219	9.219	+14.093	214.314093			378.918491
17	900.316	2.316	-25.893	890.387	20.387	+8.248	527.880591			19.102368
							742.194684	569.025891	224.852066	398.020859
							173.168793			173.168793
								$\frac{1}{2} = 86.5843965$		
19	-148.888.633	-148.890.0	+9.484	-39.875.623	-39.860.0	-18.594		148.168532	67.552002	
24	908.478	12.478	+20.208	868.873	8.873	+5.092		179.305584		94.089976
21	913.841	23.841	-9.484	880.715	20.715	+18.594	196.461060			443.299554
18	888.888	8.888	-20.208	887.467	27.467	-5.092	555.053186			45.797448
							756.514196	327.474116	113.349450	537.389530
							424.040080			424.040080
								$\frac{1}{2} = 212.020040$		

# 面積計算書

工 区: フロック 56-1 計算者 (印) 精算者 (印) 備考 (1) 高柳 298-1(1) (2) " 301-1

点	①	②	③	④	⑤	⑥	③ × ⑤		② × ⑥	
	X	X-(定数)	X <sub>n-1</sub> -X <sub>n+1</sub>	Y	Y-(定数)	Y <sub>n-1</sub> -Y <sub>n+1</sub>	+	-	+	-
	-148	-148.900		-39	-39.899					
16	909.629	9.629	+ 17.982	910.962	11.962	- 25.731		215.100684	247.763799	
26	934.205	34.205	+ 31.180	899.797	0.797	+ 3.417		24.850460		116.878485
28	940.809	40.809	- 17.982	914.379	15.379	+ 25.731	276.545178			1050.056379
15	916.223	16.223	- 31.180	925.528	26.528	- 3.417	827.143040		55.423991	
							1103.698218	239.951144	303.197790	1166.934864
							863.737074			863.737074
								1/2 = 431.868537		
	-148	-148.900		-39	-39.870					
17	900.316	0.316	+ 15.258	890.387	20.387	- 31.743		311.064846	10.030788	
25	924.887	24.887	+ 33.889	879.219	9.219	+ 9.410		312.422691		234.186670
26	934.205	34.205	- 15.258	899.797	29.797	+ 31.743	454.642626			1085.769315
16	909.629	9.629	- 33.889	910.962	40.962	- 9.410	1388.161218		90.608890	
							1842.803844	623.487539	100.639.678	1319.955785
							1219.31307			1219.31307
								1/2 = 609.6581535		





面積計算書						工区	ブロック	計算者	精算者	備考
				56-1					(2-3) 301-1	
点	①	②	③	④	⑤	⑥	③ × ⑤		② × ⑥	
	X	X-(定数)	X <sub>n-1</sub> -X <sub>n+1</sub>	Y	Y-(定数)	Y <sub>n-1</sub> -Y <sub>n+1</sub>	+	-	+	-
35	<sup>-168,</sup> 902.369	<sup>-148,00</sup> 2.369	- 26.625	<sup>-39,</sup> 896.723	<sup>-39,870</sup> 24.923	+ 6.631	663.574875			15.708839
17	900.316	0.316	+ 22.518	890.387	20.387	- 15.704		459.074466	4.962464	
25	924.887	24.887	+ 26.625	879.219	9.219	- 6.631		245.455875	165.025697	
36	926.961	26.961	- 22.518	883.756	13.756	+ 15.704	309.757608			423.081464
							973.332483	704.530341	169.988161	438.790303
							268.802142			268.802142
								x 1/2 = 134.401071		

# 面積計算書

工  
区

フ  
ロ  
ン  
ク

56-1

計  
算  
者

(印)

精  
算  
者

(印)

備  
考

(45) 商柳 301-5

点	①	②	③	④	⑤	⑥	③ × ⑤		② × ⑥	
	X	X-(定数)	X <sub>n-1</sub> -X <sub>n+1</sub>	Y	Y-(定数)	Y <sub>n-1</sub> -Y <sub>n+1</sub>	+	-	+	-
20	-148. 888.272	-148.880.0 8.272	+ 9.482	-39. 863.780	-39.850.0 13.780	-18.592		130.661960	153.793024	
23	903.115	23.115	+ 20.206	847.031	7.031	+ 5.093		142.068386		117.724695
24	908.478	28.478	- 9.482	868.873	18.873	+ 18.592	178.953786			529.462976
19	893.633	13.633	- 20.206	875.623	25.623	- 5.093	517.738338		69.432869	
							696.692124	272.730346	223.225893	607.127671
							423.961778			423.961778
									1/2 = 211.980889	

# 面積計算書

工  
区

ブ  
ロ  
ック

56-1

計  
算  
者



精  
算  
者



備  
考

隅切 II, III

点	①	②	③	④	⑤	⑥	③ × ⑤	② × ⑥
	X	X - (定数)	X <sub>n-1</sub> - X <sub>n+1</sub>	Y	Y - (定数)	Y <sub>n-1</sub> - Y <sub>n+1</sub>	+	-
	-148	-148.959		-39	-39.851			
3	959.186	0.186	- 0.126	851.754	0.754	- 1.996	0.095004	0.371256
II	961.231	2.231	+ 2.171	851.761	0.761	+ 2.003		1.652131
4	961.357	2.357	- 2.045	853.757	2.757	- 0.007	5.638065	0.016499
							5.733069	1.652131
							4.080938	0.387755
								4.468693
								$\frac{1}{2} = 2.040269$ $= 2.04$
9	-149	-149.960		-39	-39.950			
	967.898	7.898	+ 2.720	956.985	6.985	- 1.265	18.999200	9.990970
III	968.098	8.098	- 2.520	960.140	10.140	+ 4.420	25.552800	35.993160
11	965.378	5.378	- 0.200	961.405	11.405	- 3.155	2.281000	16.967590
							27833800	18.999200
							8.834600	26.958560
								35.793160
								8.834600
							$\frac{1}{2} = 4.4173$ $= 4.42$	

# 面積計算書

工  
区

フ  
ロ  
ック

56-1

計  
算  
者

精  
算  
者

備  
考

水路10号線

点	①	②	③	④	⑤	⑥	③ × ⑤	② × ⑥
	X	X-(定数)	X <sub>n-1</sub> -X <sub>n+1</sub>	Y	Y-(定数)	Y <sub>n-1</sub> -Y <sub>n+1</sub>	+	-
N'	<sup>-148.</sup> 936.717	<sup>-148.900-</sup> 36.717	+ 29.629	<sup>-39.</sup> 972.525	<sup>-39.900-</sup> 72.525	- 15.976		2148.843225, 586.590792
10	967.088	67.088	+ 28.661	958.407	58.407	- 11.120		1674.003027, 746.018560
11	965.378	65.378	- 29.629	961.405	61.405	+ 15.976	1819.368745	1044.478928
IV	939.459	37.459	- 28.661	974.383	74.383	+ 11.120	2131.891163	416.544080
							3951.259908, 3922.946252, 1332.609352	1461.023008
							128.413656	128.413656
							1/2 = 64.206828	

計年 月 算日	計 算 者	檢 查 者
---------------	-------------	-------------

B. NO. 56-1 各筆面積計算書

地番	算式	隅切	地積	摘要
1	保 56-1-1号		159.23	
2	高柳 297-1 (A)		215.88	
3	" 297-1 (B)		1033.22	
4	" 297-1 (C)		862.47	
5	" 298-1 (A)		756.74	
6	" 299-1 (A)		160.12	
7	" 210 (B)		183.86	
8	" 374 (A)		444.81	
9	" 299-1 (A)		652.86	
10	" 299-2 300		289.87	
11	" 298-1 (A)		431.86	301-10 233.73
12	" 301-1		609.65	301-11 261.52 301-1 134.40
13	" 301-4, 301-7 301-6		86.58	
14	" 301-8		212.02	
15	" 301-5		211.88	
		合計	6411.45	
		全件	6411.44	
		差	-0.01	
	空地面積		6252.22	14筆
	保留地面積		159.23	1筆
	水路面積 10号線2M		64.20	