

街区略図

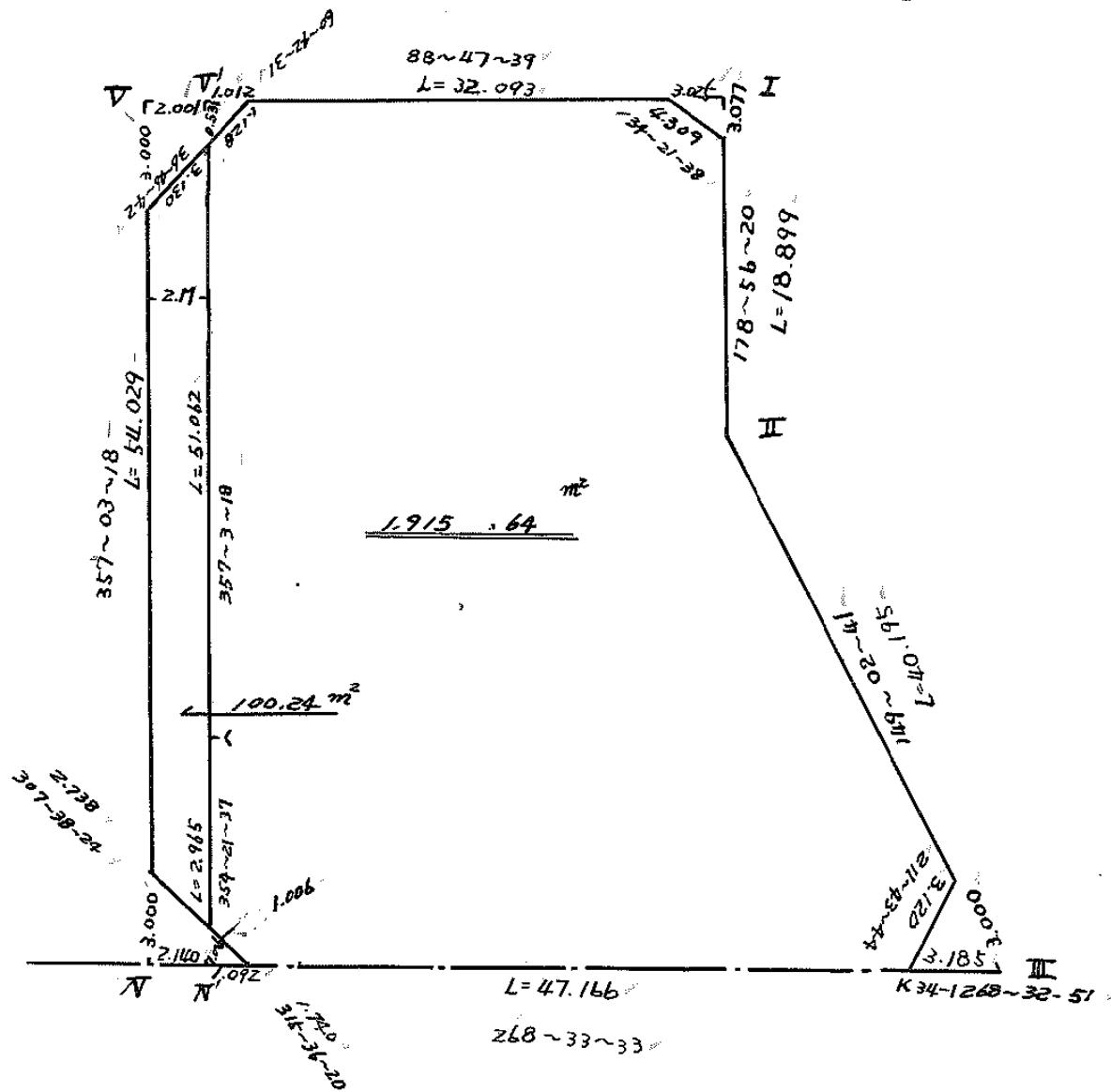
工区

ブロック

49

記入者

点検者



面積計算書		工 区	フ ロ ック	49	計 算 者	精 算 者	備 考	全		
点	①	②	③	④	⑤	⑥	③ × ⑤	② × ⑥		
	X	X - (定数)	X _{n-1} - X _{n+1}	Y	Y - (定数)	Y _{n-1} - Y _{n+1}	+	-	+	-
I	⁻¹²⁸ 905.981	^{-128.900} 5.981	+18.221	^{-3A} 614.312	^{-3P.5PD} 24.312	-32.436			442.98952	193.99716
II	924.877	24.877	+53.866	613.962	23.962	-21.025			1278.75602	523.03825
III	959.347	59.347	+34.551	593.287	3.287	-17.491			113.56137	1028.03837
K34-1	959.428	59.428	+1.267	596.471	6.471	+50.335			8.198757	2991.908980
IV	960.614	60.614	-52.772	643.622	53.622	+49.927	2829.740184			3026.275178
V	906.656	6.656	-54.638	646.398	56.398	-29.310	3081.191934		195.087360	
							5910.932118	1843.512938	1950.164378	6017.593558
							4067.419180			4067.419180
							$\times \frac{1}{2} = 2033.709590$			
							$= 2033.70$			
				*路	陽印I	III	II	丁		
				2033.70 + 100.24	-	(4.65 + 4.16 + 5.18 + 3.80)	=	1915.67	m^2	
										17.79 m^2

画地計算

画地略図

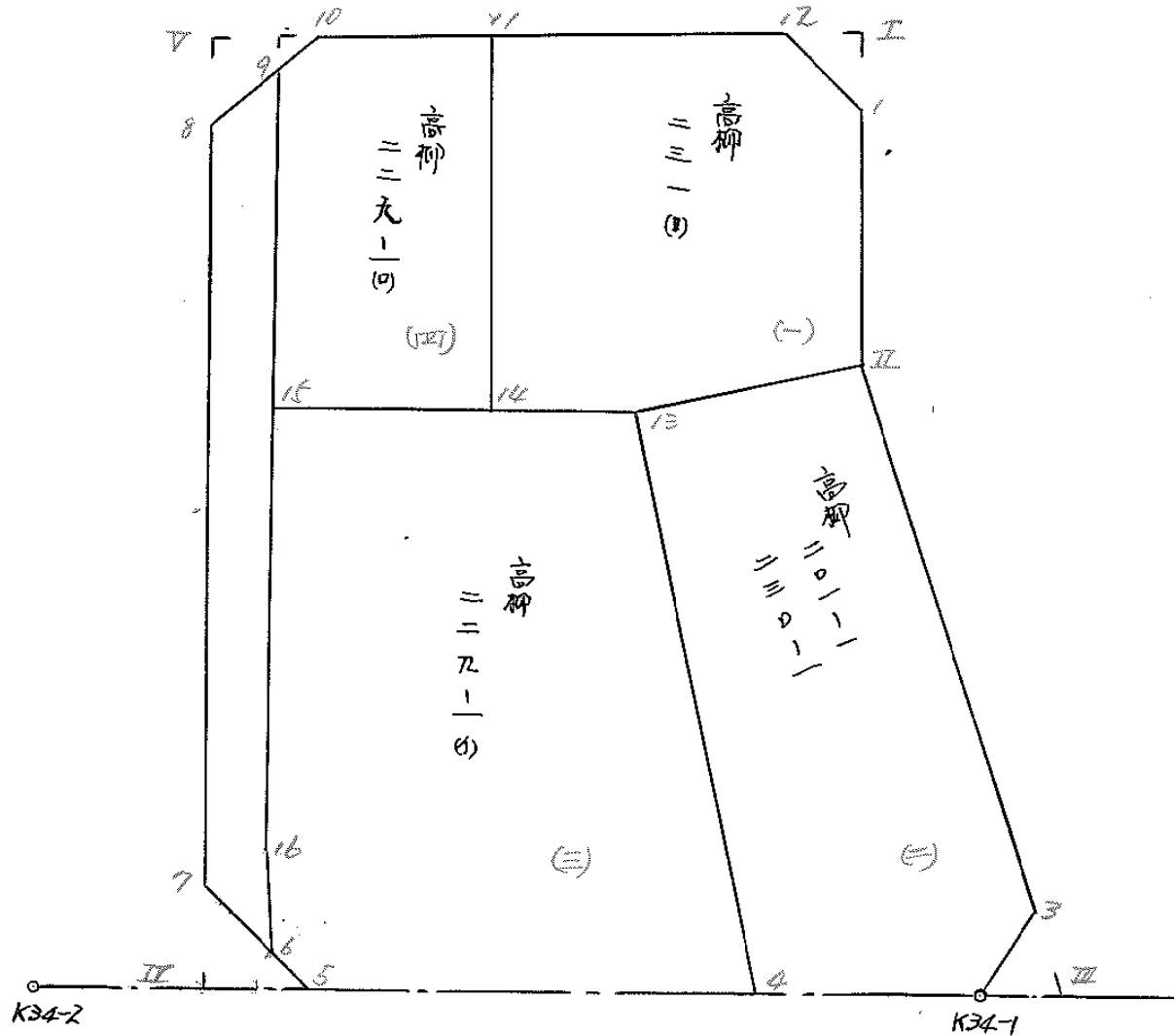
工区

ブロック

49

記入者

点検者



面積計算書

工
区

ブ
ロ
ック

49

計
算
者

精
算
者



備
考

高柳 23/ (B) (一)

高柳 2019/1, 2020/1 (二)

点	①	②	③	④	⑤	⑥	③ × ⑤		② × ⑥	
	X	X-(定数)	X _{n-1} -X _{n+1}	Y	Y-(定数)	Y _{n-1} -Y _{n+1}	+	-	+	-
		-148,900.-			-39,610.-					
12	-148,906.044	6.044	+ 2.726	-39,617.336	7.336	-16.684		19,997,936	100,838,096	
1	909.057	9.057	+ 18,833	614.255	4.255	- 3.374		80,134,415	30,558,318	
II	924,877	24,877	+ 19,097	613.962	3.962	+ 11.220		75,662,314		279,119,940
13	928,154	28,154	+ 3,528	625,475	15,475	+ 16,531		54,595,800		465,413,774
14	928,405	28,405	- 21,823	630,493	20,493	+ 5,464	447,218,739			155,204,920
11	906,331	6,331	- 22,361	630,939	20,939	- 13,157	468,216,979		82,296,967	
							915,435,718	230,390,465	214,673,381	879,738,624
							685,045,253			685,045,253
								X ^{1/2} = 342,522,625		
II	-148,924,877	4,877	+ 28,620	-39,613,962	23,962	-30,645		685,792,440	149,455,665	
3	956,774	36,774	+ 34,551	594,830	4,830	-17,491		166,881,220	642,214,034	
13A-1	959,428	39,428	+ 3,054	596,471	6,471	+17,553		19,762,434		692,079,684
4	959,828	39,828	- 31,274	612,383	22,383	+29,004	700,005,942			1155,171,912
13	928,154	8,154	- 34,951	625,475	35,475	+ 1,579	1239,886,725			12,875,166
							1939,892,667	872,436,204	792,669,699	1860,126,162
							1067,456,463			1067,456,463
								X ^{1/2} = 533,728,231.5		

面積計算書

工
区

フ
ロ
ック

49

計
算
者

精
算
者



備
考

高柳 2299/ (イ)

(ロ)

2299/ (ロ)

(四)

点	①	②	③	④	⑤	⑥	③ × ⑤		② × ⑥	
	X	X - (定数)	X _{n-1} - X _{n+1}	Y	Y - (定数)	Y _{n-1} - Y _{n+1}	+	-	+	-
13	-148,928,154	-148,928. - 8,154	+30,784	-39,625,475	-39,610. - 15,475	-30,860		476,382,400	251,632,440	
4	959,828	39,828	+32,379	612,383	2,383	+14,916		77,159,157		594,074,448
5	960,533	40,533	-0,538	640,391	30,391	+29,225	16,350,558			1184,576,925
6	959,290	39,290	-2,924	641,608	31,608	+1,383	92,421,792			54,338,070
16	957,609	37,609	-30,246	641,774	31,774	+1,635	961,036,404			61,490,715
15	929,044	9,044	-29,455	643,243	33,243	-16,299	979,172,565		147,408,156	
							2048,981,119	553,541,557	399,040,596	1894,480,158
							1,495,439,562			1,495,439,562
							$X \frac{1}{2} = 747,719,781$			
11	-148,906,331	-148,900. - 6,331	+21,812	-39,630,959	-39,630. - 0,939	-12,893		20,481,468	81,625,583	
14	928,405	28,405	+22,713	630,493	0,493	+12,304		11,197,509		349,495,120
15	929,044	29,044	-21,260	643,243	13,243	+13,877	281,546,180			403,040,588
9	907,145	7,145	-22,451	644,370	14,370	+0,143	322,620,870			1,021,735
10	906,593	6,593	-0,814	643,386	13,386	-13,431	10,896,204		88,550,583	
							615,063,254	31,678,977	170,176,166	753,560,443
							583,384,277			583,384,277
							$X \frac{1}{2} = 291,692,138$			

面積計算書		工 区	フ ロ ック	4P	計 算 者	精 算 者	備 考	陽切工、Ⅲ		
点	①	②	③	④	⑤	⑥	③ × ⑤	② × ⑥		
	X	X - (定数)	X _{n-1} - X _{n+1}	Y	Y - (定数)	Y _{n-1} - Y _{n+1}	+	-		
I	-148 905.881	-148.905 0.881	+3.018	-3P 614.312	-3P.614 0.312	-3.081		0.940056	3.022461	
I	909.057	4.057	+0.063	614.255	0.255	+3.024		0.016065	12.268368	
Ⅱ	906.044	1.044	-3.076	617.336	2.336	+0.057	10.261536		0.059508	
							10.261536	0.956121	3.022461	12.327876
								9.305415		9.305415
								$\times \frac{1}{2} = 4.6527075 = 4.65$		
Ⅲ	-148 956.774	-148.956 0.774	-0.081	-3P 594.830	-3P.593 1.830	-3.184		0.148230	2.464416	
Ⅲ	959.347	3.347	+2.654	593.287	0.287	+1.641		0.761698	5.492427	
K347	959.428	3.428	-2.578	596.471	3.471	+1.543	8.930883		5.294104	
							9.029113	0.761698	2.464416	10.781931
								8.317415		8.317415
								$\times \frac{1}{2} = 4.1587075 = 4.16$		

面積計算書

工
区

フ
ロ
ック

49

計
算
者

精
算
者

備
考

隅 切 Ⅱ Ⅴ

点	①	②	③	④	⑤	⑥	③ × ⑤		② × ⑥	
	X	X-(定数)	X _{n-1} -X _{n+1}	Y	Y-(定数)	Y _{n-1} -Y _{n+1}	+	-	+	-
5	-148,960.533	^{-148,960.-} 10.533	+1.324	-39,640.391	^{-39,640.-} 0.391	+2.014		0.517684		21.213462
Ⅱ	960.614	10.614	-2.915	643.622	3.622	+3.385	10,558.130			35,928.390
7	957.618	7.618	-1.324	643.776	3.776	-2.014	4,999.424		15,342.652	
6	959.290	9.290	+2.915	641.608	1.608	-3.385		1,687.320	31,446.650	
							15,557.554	5,205.004	46,789.302	57,141.852
							10,352.550			10,352.550
									$K_2 = 5.176275$	
8	-148,909.652	^{-148,900.-} 9.652	-0.489	-39,646.244	^{-39,640} 6.244	+2.028	3,053.316			19,574.256
Ⅴ	906.656	6.656	-3.059	646.398	6.398	-2.858	19,571.482		19,022.848	
10	906.593	6.593	+0.489	643.386	3.386	-2.028		1,655.754	13,370.604	
9	907.145	7.145	+3.059	644.370	4.370	+2.858		13,367.830		20,420.410
							22,624.798	15,023.584	32,393.452	39,994.666
							7,601.214			7,601.214
									$K_2 = 3.800607$	

