

街区略図

工区

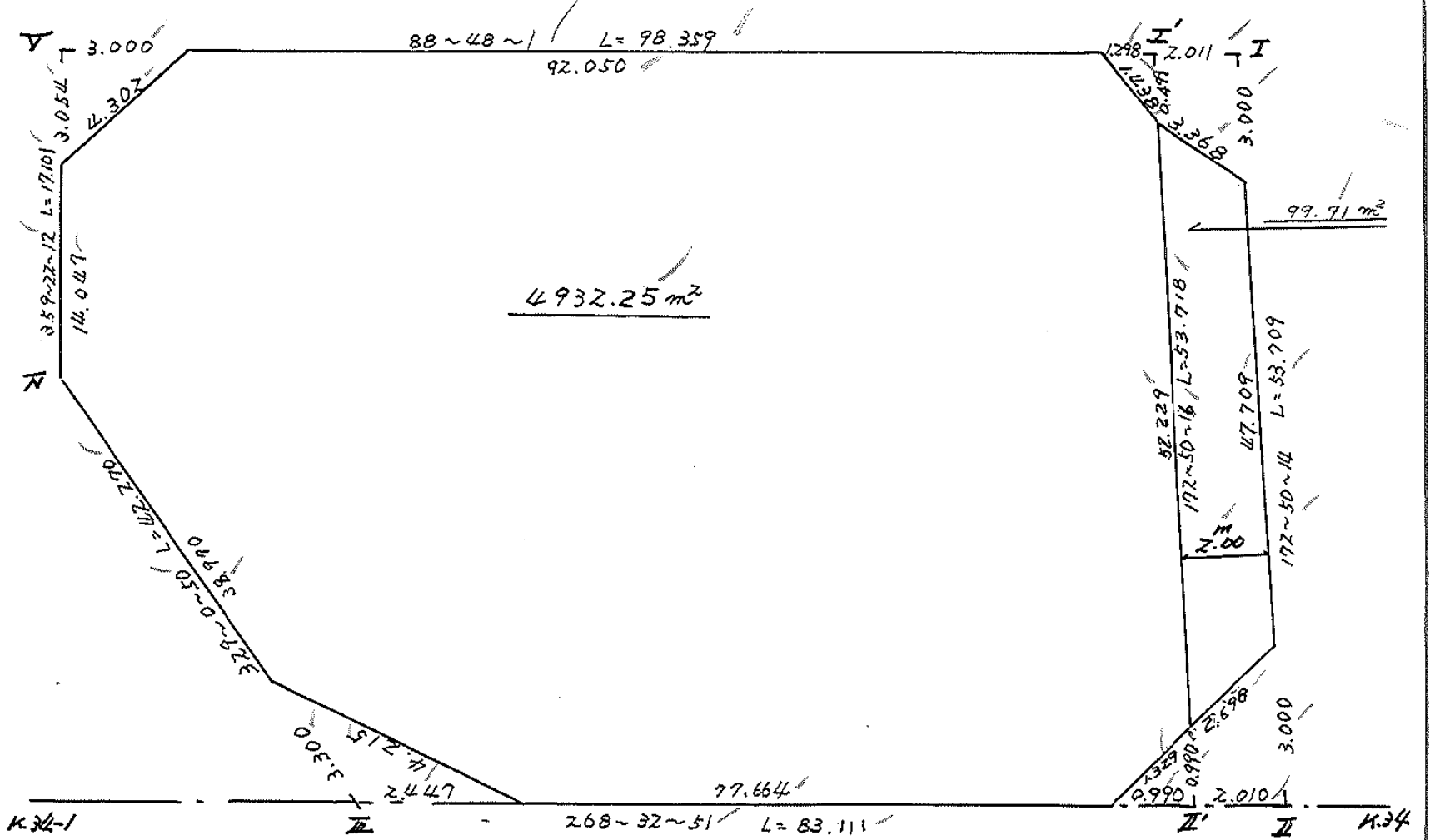
ブロック

48

記入者



点検者



面地計算

画地略図

工区

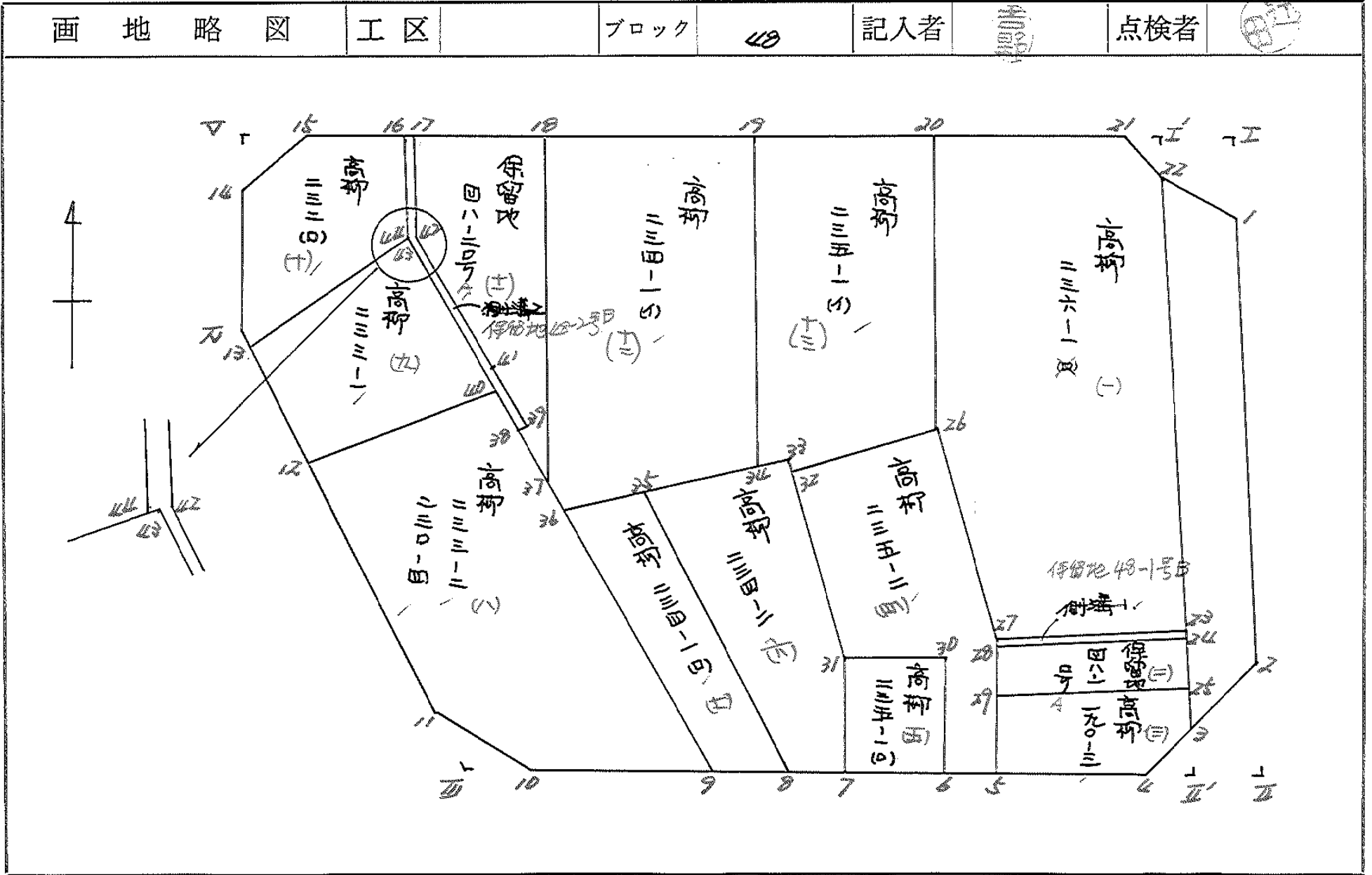
ブロック

48

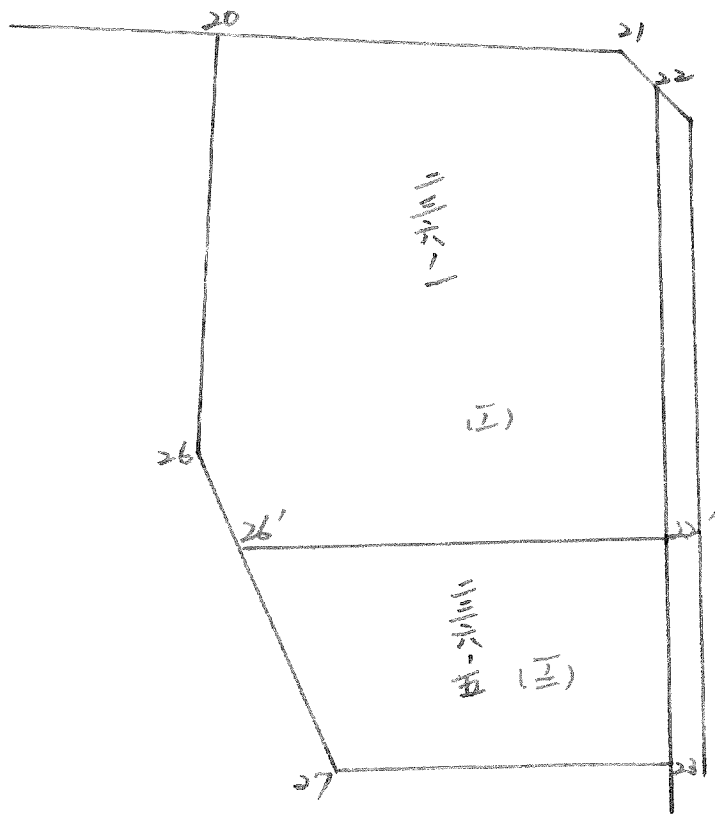
記入者

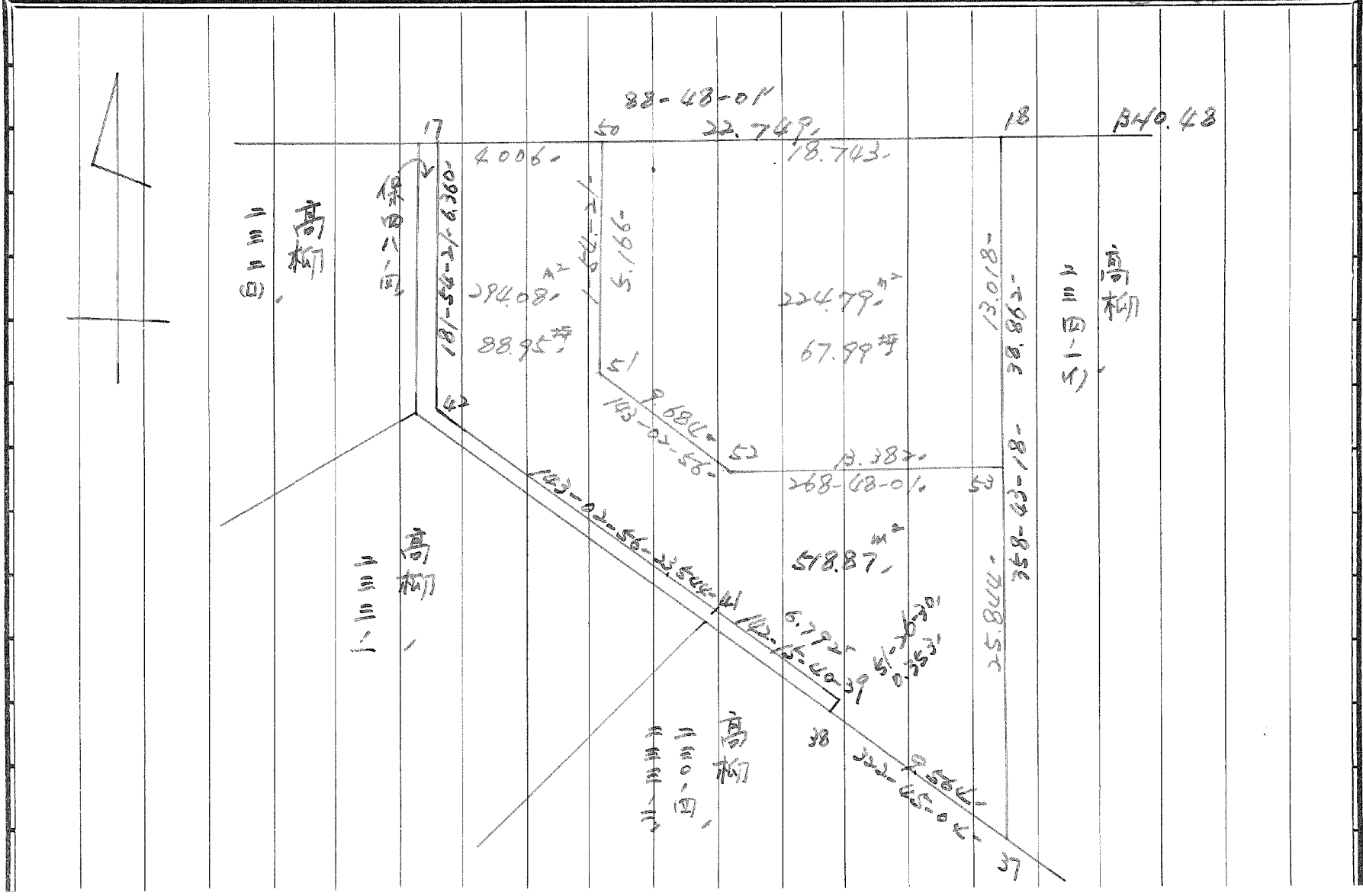
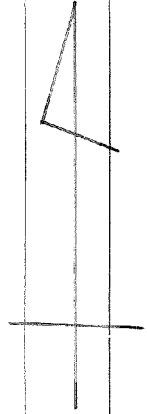
三和測量建設株式会社

点検者



BNO. 48 分割計算





面積計算書

工区

ブロック

48

計算者

精算者



備考

1. 高柳 236-1 (2)
2. 保留地 48-1号A

点	①	②	③	④	⑤	⑥	③ × ⑤		② × ⑥	
	X	X-(定数)	X _{n-1} -X _{n+1}	Y	Y-(定数)	Y _{n-1} -Y _{n+1}	+	-	+	-
20	-148.900	-148.900	-24.750	-39.500	-39.500	-23.061	913.002750		100.038618	
21	903.8431	4.3381	-0.027	513.2491	13.2491	-25.000	0.357723		96.075000	
22	904.3111	4.3111	+40.239	511.8891	11.8891	-6.358		478.401471	27.409338	
23	944.0821	44.0821	+42.128	506.8911	6.8911	+13.880		290.304048		611.858160
27	946.4391	46.4391	-15.489	525.7691	25.7691	+29.419	399.136041			1366.188941
26	928.5931	28.5931	-42.101	536.3101	36.3101	+11.120	1528.687310			317.954160
							2841.183824	768.705519	223.522956	2296.001261
							2072.478305			2072.478305
								1/2 = 1036.2391525		
24	-148.940	-148.940	+1.803	-39.500	-39.500	-19.466		12.289248	91.042482	
25	943.8421	8.8421	+6.526	506.2931	6.2931	+18.876		41.068118		166.901592
29	951.2031	11.2031	-1.803	525.6921	25.6921	+19.466	46.322676			218.077598
28	947.0391	7.0391	-6.526	525.7591	25.7591	-18.876	168.103234		132.868164	
							214.425910	53.357366	223.910646	384.979190
							161.068544			161.068544
								1/2 = 80.5342721		

面積計算書

工
区

ブ
ロ
ック

48

計
算
者

精
算
者

備
考

(1-1) 236-1
(1-2) 236-5

点	①	②	③	④	⑤	⑥	③ × ⑤		② × ⑥	
	X	X-(定数)	X _{n-1} -X _{n+1}	Y	Y-(定数)	Y _{n-1} -Y _{n+1}	+	-	+	-
20	^{-148.} 906.338	^{-148.900.} 4.338	- 24.750	^{-39.} 536.889	^{-39.500.} 36.889	- 23.061	913.002750		100.038618	
21	903.943	3.843	- 0.027	513.269	13.269	- 25.000	0.357723		96.075000	
22	904.311	4.311	+ 27.598	511.889	11.889	- 4.769		328.112622	20.559159	
22'	931.441	31.441	+ 30.238	508.680	8.480	+ 20.903		256.418240		657.211223
26'	934.549	34.549	- 2.848	532.792	32.792	+ 27.830	93.391616			961.498670
26	928.593	28.593	- 30.211	536.310	36.310	+ 4.097	1096.961410			117.145521
							2103.713499	584.630862	216.672777	1735.855410
							1519.182637			1519.182637
								$\frac{1}{2} = 759.591318^5$		
22'	^{-148.} 931.441	^{-148.930.} 1.441	+ 9.533	^{-39.} 508.680	^{-39.500} 8.680	- 25.901		80.839840	37.323341	
23	944.082	14.082	+ 14.998	506.891	6.891	+ 17.289		103.351218		243.663698
27	946.439	16.439	- 9.533	525.769	25.769	+ 25.901	245.655877			425.786539
26'	934.549	4.549	- 14.998	532.792	32.792	- 17.289	691.814416		78.647661	
							737.670293	184.191058	115.771002	667.250237
							553.279235			553.279235
								$\times \frac{1}{2} = 276.6396175$		

1036.23 - 759.59 = 276.64... 236.5

面積計算書

工
区

フ
ロ
ック

48

計
算
者



精
算
者



備
考

3高柳 190-3

点	①	②	③	④	⑤	⑥	③ × ⑤		② × ⑥	
	X	X-(定数)	X _{n-1} -X _{n+1}	Y	Y-(定数)	Y _{n-1} -Y _{n+1}	+	-	+	-
25	-148 948.842	-148.940 8.842	+ 4.930	-39 506.293	-39.500 6.293	- 20.316			31.024490	179.634072
3	956.133	16.133	+ 8.298	505.376	5.376	- 0.050			44.610048	0.806650
4	957.140	17.140	+ 1.498	506.243	6.243	+ 20.213			9.352014	346.450820
5	957.631	17.631	- 5.937	525.589	25.589	+ 19.449	151.921893			842.905319
29	951.203	11.203	- 8.789	525.692	25.692	- 19.296	225.806988			216.173089
							377.728881	84.986552	396.613810	589.356139
							292.742329			292.742329
									1/2 = 146.3711645	

面積計算書

工区

ブロック

48

計算者



精算者



備考

川高柳 235-2

点	①	②	③	④	⑤	⑥	③ × ⑤		② × ⑥	
	X	X-(定数)	X _{n-1} -X _{n+1}	Y	Y-(定数)	Y _{n-1} -Y _{n+1}	+	-	+	-
5	-148. 957.631	-148.920 27.631	+ 11.268	-39 525.589	-39.520 5.689	+ 2.818		62.976		106.044
6	957.707	37.707	- 10.726	528.587	8.687	+ 3.149	72.104			118.739
30	946.905	26.905	- 8.462	528.738	8.738	+ 11.066	77.940			297.730
31	949.245	29.245	- 10.692	539.653	19.653	+ 19.189	210.129			561.823
32	936.213	16.213	- 20.652	547.927	27.927	- 3.343	576.748			542.000
26	928.593	8.693	+ 10.226	536.310	16.310	- 22.158		166.786	190.403	
27	946.439	26.439	+ 29.038	525.769	5.769	- 10.721		167.520	293.452	
							952.923	397.283	528.056	1087.696
							556.640			556.640
									72 = 297.820	

面積計算書

工区

ブロック

48

計算者



精算者



備考

5. 高柳 235-1 (9)
6. " 234-2

点	①	②	③	④	⑤	⑥	③ × ⑤		② × ⑥	
	X	X-(定数)	X _{n-1} -X _{n+1}	Y	Y-(定数)	Y _{n-1} -Y _{n+1}	+	-	+	-
6	-148 957.707	-148.940 17.707	+ 11.079	-39 528.529	-39.520 2.527	+ 10.778				
7	957.984	17.984	- 8.462	539.516	19.516	+ 11.066	165.144392			199.010944
31	949.245	9.245	- 11.079	539.653	19.653	- 11.778	217.725527			99.642610
20	946.905	6.905	+ 8.462	528.738	2.738	- 11.066		73.940956	76.410720	
							282.279979	189.076329	176.053340	389.256990
							213.803650			213.803650
									Σ = 106.901825	
7	-148 957.984	-148.930 27.984	+ 8.890	-39 539.516	-39.520 9.516	+ 5.843				
8	958.135	28.135	- 16.724	545.496	15.496	+ 17.147	259.55104			482.430845
35	941.260	11.260	- 22.260	556.663	26.663	+ 2.645	593.59380			29.782700
33	935.875	5.875	+ 7.985	548.141	18.141	- 17.010		144.855825	99.923950	
31	949.245	19.245	+ 22.109	539.653	9.653	- 2.625		213.418179	165.988125	
							85.573484	442.871302	265.921875	575.724057
							409.802182			409.802182
									Σ = 204.901091	

面積計算書

工区

ブロック

48

計算者

徳山

精算者

82

備考

7. 高柳 234-1 (a)
8 " 233-2 230-4

点	①	②	③	④	⑤	⑥	③ × ⑤		② × ⑥	
	X	X-(定数)	X _{n-1} -X _{n+1}	Y	Y-(定数)	Y _{n-1} -Y _{n+1}	+	-	+	-
8	-148 958.135	-148.940 18.135	+ 17.084	-39 545.496	-39.540 5.496	- 2.940			73.293664	53.319000
9	958.344	18.344	- 12.525	553.723	12.723	+ 17.955	172.703955			329.366520
36	945.550	5.550	- 17.084	563.451	23.451	+ 2.940	400.536884			16.717000
35	941.260	1.260	+ 12.585	556.663	16.663	- 17.955			209.703255	22.123700
							573.340839	303.597519	75.940200	345.683520
							259.743320			259.743320
									Σ = 134,871,660	
9	-148 958.344	-148.930 28.344	+ 28.625	-39 553.723	-39.550 3.723	+ 9.129			105.826275	258.695688
10	959.109	29.109	- 2.002	583.882	33.882	+ 34.304	62.831764			778.555136
11	956.342	26.342	- 20.574	588.027	38.027	+ 14.838	782.357498			390.862596
12	938.535	8.535	- 25.658	598.720	48.720	- 13.272	126.057760			112.276520
40	930.684	0.684	+ 19.809	574.755	24.755	- 44.997			490.371995	30.777948
							2100.257022	596.198070	1044.054468	1648.113420
							1504.058952			1504.058952
									Σ = 752,029,476	

面積計算書

工区

ブロック

18

計算者

計算者

827

備考

9. 高柳 222-1
10 " 222(6)

点	①	②	③	④	⑤	⑥	③ × ⑤		② × ⑥	
	X	X-(定数)	X _{n-1} -X _{n+1}	Y	Y-(定数)	Y _{n-1} -Y _{n+1}	+	-	+	-
12	⁻¹⁴⁸ 938.535	^{-148,900} 38.535	-7.569	⁻³⁹ 598.720	^{-39,570} 28.720	+33.226	217.381680			1280.363710
13	923.115	23.115	-26.582	607.981	37.981	-9.722	1009.610942		224.724030	
43	911.953	11.953	+7.569	588.998	18.998	+33.226		143.795862	397.150378	
40	930.684	30.684	+26.582	574.755	4.755	+9.722		126.397410		298.309848
							1226.992622	270.193272	621.874408	1578.673758
							966.799350			956.799250
										X/2 = 478.399675 ←
13	⁻¹⁴⁸ 923.115	^{-148,900} 23.115	+10.902	⁻³⁹ 607.981	^{-39,580} 27.981	+18.960		305.046862		438.260400
7	922.933	22.933	-14.228	608.090	28.090	+0.263	399.664520			6.031379
14	908.887	8.887	-17.163	608.244	28.244	-2.811	484.751772		2498.1357	
15	905.770	5.770	-3.459	605.279	25.279	-19.327	87.440061		111.516790	
16	905.428	5.428	+6.261	588.917	8.917	-16.149		55.829337	87.656772	
44	912.031	12.031	+17.687	589.130	9.130	+19.064		161.482310		229.358984
							971.856353	522.360509	224.154919	673.650763
							449.495844			449.495844
										X/2 = 224.747922 ←

面積計算書

工
区

ブ
ロ
ック

48

計
算
者



繪
算
者



備
考

11. 市留地 48-2号A

点	①	②	③	④	⑤	⑥	③ × ⑤		② × ⑥	
	X	X-(定数)	X _{n-1} -X _{n+1}	Y	Y-(定数)	Y _{n-1} -Y _{n+1}	+	-	+	-
17	905.417	5.417	+ 6.833	588.399	28.399	+ 22.956		194.050367		124.352652
42	911.773	11.773	+ 25.171	588.611	28.611	- 13.941		720.167481	164.127393	
41	930.588	30.588	+ 24.186	574.458	14.458	- 18.310		349.681188	560.066280	
39	935.959	35.959	+ 5.591	570.301	10.301	- 3.881		57.592891	139.556879	
38	936.179	36.179	+ 7.833	570.577	10.577	- 5.513		82.849641	199.454827	
37	943.792	43.792	- 31.239	564.799	4.788	- 4.922	149.572332		215.544224	
18	904.940	4.940	- 38.375	565.655	5.655	+ 23.611	217.010625			116.638340
							366.582957	1404.341518	1278.749603	240.990992
							1,037.758611	1,037.758611		
										X/2 518.87930551

面積計算書							工 区	ブ ロ ック	計 算 者	精 算 者	備 考
点	①	②	③	④	⑤	⑥	③ × ⑤		② × ⑥		
	X	X-(定数)	X _{n-1} -X _{n+1}	Y	Y-(定数)	Y _{n-1} -Y _{n+1}	+	-	+	-	
	-100	-108.900		-39	-39.560						
17	905.417	5.417	- 6.440	588.399	20.399	- 4.217	182.889560		22.843489		
50	905.333	5.333	+ 5.079	584.394	24.394	- 3.833		123.897126	20.461389		
51	910.496	10.496	+ 12.902	584.566	24.566	- 5.650		316.950522	59.302400		
52	918.235	18.235	+ 7.459	578.744	18.744	- 19.201		139.811496	350.130235		
53	917.955	17.955	+ 25.557	565.365	5.365	- 13.956		137.113305	250.579980		
37	943.792	43.792	+ 18.224	564.788	4.788	+ 5.212		87.256512		228.243904	
38	936.179	36.179	- 7.833	570.577	10.577	+ 5.513	82.849641			199.654827	
39	935.959	35.959	- 5.591	570.301	10.301	+ 3.881	57.592891			129.556879	
41	930.588	30.588	- 24.186	574.458	14.458	+ 18.310	249.681188			560.066280	
42	911.773	11.773	- 25.171	588.811	28.811	+ 13.941	720.167681			164.127293	
							1392.180761	805.028977	297493	1291669283	
							588.151790			588.151790	
									1/2 = 294.075895		
				518.87	- 224.79	=	294.08				

面積計算書

工
区

ブ
ロ
ック

48

計
算
者



積
算
者



備
考

点	①	②	③	④	⑤	⑥	③ × ⑤		② × ⑥	
	X	X - (定数)	X _{n-1} - X _{n+1}	Y	Y - (定数)	Y _{n-1} - Y _{n+1}	+	-	+	-
18	-148 904.940	-148.900 4.940	+ 12.622	-39 565.655	-39.560 5.655	- 19.029			71.377410	94.003260
53	917.955	17.955	+ 13.295	565.365	5.365	+ 13.089			71.327675	225.012995
52	918.235	18.235	- 7.459	578.744	18.744	+ 19.201	139.811496			350.130235
51	910.496	10.496	- 12.902	584.566	24.566	+ 5.650	316.955522			59.302400
50	905.333	5.333	- 5.556	584.394	24.394	- 18.911	135.523064			100.852363
							592.295092			142705085
							194855623			648.045630
							449.590007			449.590007
										1/2 = 224.7950035

面積計算書

工区

ブロック

48

計算者

徳山

精算者

田中

備考

12. 高柳 234-1 (A)
13. " 235-1 (A)

点	①	②	③	④	⑤	⑥	③ × ⑤	② × ⑥
	X	X - (定数)	X _{n-1} - X _{n+1}	Y	Y - (定数)	Y _{n-1} - Y _{n+1}	+	-
18	904.940	4.940	+39,173	565.655	25.655	+14.485		
37	943.792	43.792	+40.610	564.788	24.788	-2.204	1004.983315	71.555900
36	945.550	45.550	-7.016	563.451	23.451	-15.222	1006.640680	96.517568
34	936.776	36.776	-40.931	549.566	9.566	-13.148	164.532216	693.362100
19	904.619	4.619	-31.836	550.303	10.303	+16.089	391.545946	483.530848
							328.006308	74.315091
							884.084470	2011.623995
							1273.410516	145.870991
							1127.539525	1127.539525
								X/2 = 563.7697625
19	904.619	4.619	+32.438	550.303	20.303	+12.677		
34	936.776	36.776	+31.256	549.566	19.566	-2.162	658.588714	58.555063
33	935.875	35.875	-0.563	548.141	18.141	-1.639	611.554896	79.509712
32	936.213	36.213	-7.282	547.927	17.927	+11.831	10.213383	58.799125
26	928.593	28.593	-31.875	536.310	6.310	-11.038	130.544414	428.436003
20	904.338	4.338	-23.974	536.889	6.889	+13.993	201.131250	315.609534
							165.156886	60.701634
							507.045933	1270.143610
							882.354374	119.256697
							763.097677	763.097677

三和測量建設株式会社

X/2 = 381.5488385

面積計算書

工
区

プロ
ック

48

計
算
者



精
算
者



備(13)側 葦 1 号地 48-13 B
考(14) 1 号地 48-29 B

点	①	②	③	④	⑤	⑥	③ × ⑤		② × ⑥	
	X	X-(定数)	X _{n-1} -X _{n+1}	Y	Y-(定数)	Y _{n-1} -Y _{n+1}	+	-	+	-
23	944.082	4.082	-1.762	506.891	6.891	-18.953	12.141942		77.366146	
24	944.677	4.677	+2.957	506.816	6.816	+18.868		20.154912	106.88.245636	
28	947.039	7.039	+1.762	525.759	25.759	+18.953		45.387358	133.40167	
27	946.439	6.439	-2.957	525.769	25.769	+18.868	76.198933		121.491052	
							88.340875	65.542270	198.857198	221.655803
							22.798605			22.798605
							$\times \frac{1}{2} = 11.3993025$			
17	905.417	5.417	+6.345	588.399	18.399	-0.306		116.741655	1.657602	
42	911.773	11.773	+25.171	588.611	18.611	-13.941		468.457481	164.127393	
41	930.588	30.588	+24.186	574.458	4.458	-18.310		107.821188	560.066280	
39	935.959	35.959	+5.591	570.301	0.301	-3.881		1.682891	139.556879	
38	936.179	36.179	-24.006	570.577	0.577	+18.697	13.851462			676.438763
43	911.953	11.953	-24.148	588.998	18.998	+18.553	458.763704			221.764009
44	912.031	12.031	-6.525	589.130	19.130	-0.081	124.823250		0.994511	
16	905.428	5.428	-6.614	588.917	18.917	-0.731	125.117038		3.967868	
							722.555454	694.703245	870.350533	898.202772
							27.852239			27.852239

$\times \frac{1}{2} = 13.9261195$ 三和測量建設株式会社

面積計算書

工
区

ブ
ロ
ック

48

計
算
者

精
算
者

備
考

スミキリ I

II

点	①	②	③	④	⑤	⑥	③ × ⑤		② × ⑥	
	X	X-(定数)	X _{n-1} -X _{n+1}	Y	Y-(定数)	Y _{n-1} -Y _{n+1}	+	-	+	-
I	-148. 903.774	-148.900 3.774	+ 2.908	-39 509.941	-39.500 9.941	- 3.682			28.908428	13.895868
1	906.751	6.751	+ 0.537	509.567	9.567	+ 1.948			5.137479	13.150948
22	904.311	4.311	- 2.908	511.889	11.889	+ 3.682	34.573212			15.873102
21	903.843	3.843	- 0.537	513.249	13.249	- 1.948	7.114713			7.486164
							41.687925	34.045907	21.382032	29.024050
							7.642018			7.642018
								1/2 = 3.821009		
								= 3.82		
Z	-148 954.087	-148.950 4.087	+ 0.931	-39 503.618	-39.500 3.618	- 2.132			3.368258	8.713484
II	957.064	7.064	+ 3.053	503.244	3.244	+ 2.625			9.903932	18.544300
4	957.140	7.140	- 0.931	506.243	6.243	+ 2.132	5.812238			15.222480
3	956.133	6.133	- 3.053	505.376	5.376	- 2.625	16.412928			16.099125
							22.225161	13.272290	24.812609	33.765480
							8.952871			8.952871
								1/2 = 4.4764355		
								= 4.48		

面積計算書

工区

ブロック

48

計算者

精算者

備考

スミキリ Ⅱ

スミキリ Ⅲ

点	①	②	③	④	⑤	⑥	③ × ⑤		② × ⑥	
	X	X-(定数)	X _{n-1} -X _{n+1}	Y	Y-(定数)	Y _{n-1} -Y _{n+1}	+	-	+	-
10	⁻¹⁴⁸ 959.109	^{-148,950} -9.109	+2.829	⁻³⁹ 583.882	^{-39,580} 3.882	-1.699			10.982.178	15.476.191
Ⅲ	959.171	9.171	-2.767	586.328	6.328	+4.145	17.509.576			38.013.795
11	956.342	6.342	-0.062	588.027	8.027	-2.446	0.497.674			15.512.532
							18.007.250	10.982.178	30.988.723	38.013.795
							7.025.072			7.025.072
							x ^{1/2} = 3.512.536 /			
							= 3.51 /			
14	⁻¹⁴⁸ 908.887	^{-148,900} 8.887	+0.063	⁻³⁹ 608.244	^{-39,600} 8.244	+2.999			0.519.372	26.652.113
Ⅴ	905.833	5.833	-3.117	608.278	8.278	-2.965	25.802.526			17.294.845
15	905.770	5.770	+3.054	605.279	5.279	-0.034			16.122.066	0.196.180
							25.802.526	16.641.438	17.491.025	26.652.113
							9.161.088			9.161.088
							x ^{1/2} = 4.580.544 /			
							= 4.58 /			

面積計算書

工
区

ブ
ロ
ック

48

計
算
者



精
算
者



備
考

水路9号線M

点	①	②	③	④	⑤	⑥	③ × ⑤		② × ⑥	
	X	X - (定数)	X _{n-1} - X _{n+1}	Y	Y - (定数)	Y _{n-1} - Y _{n+1}	+	-	+	-
1	⁻¹⁴⁸ 906.751	^{-128,900} 6.751	+ 49.776	⁻³⁹ 509.567	^{-29,500} 7.567	- 8.271		476.206992	15.83752	
2	954.087	54.087	+ 49.382	503.618	7.618	- 4.191		178.664076	226.678617	
3	956.133	56.133	- 49.776	505.376	5.376	+ 8.271	267.596276			464.276043
22	904.311	4.311	- 49.382	511.889	11.889	+ 4.191	587.102598			18.067401
							854.698374	654.871068	282.516138	682.343444
							199.827306			199.827306
									72 = 99.913653	

計年
月
算日

計
算
者



檢
查
者



B. NO. 48

各筆面積計算書

地番	算式	隅切	地積	摘要
1	高柳 236-1		1,036.23	236-1 759.59 236-5 276.64
2	保留地 48-1号A		80.53	
3	高柳 190-3		146.37	
4	" 235-2		277.82	
5	" 235-1(10)		106.90	
6	" 234-2		204.90	
7	" 234-1(10)		134.87	
8	" 233-2, 230-4		752.02	
9	" 233-1		478.39	
10	" 232(1)		224.74	
11	保留地 48-2号A		518.87	
12	高柳 234-1(1)		563.76	
13	" 235-1(1)		381.54	
14	保留地 48-1号B		11.39	
15	" 48-2号B		13.92	
		合計	4,932.25	
		全体	4,932.33	
		差	-0.08	
	宅地		4,307.54	11筆
	保留地		624.71	4筆
	水路沿線2M		99.91	