

面地計算

画地略図

工区

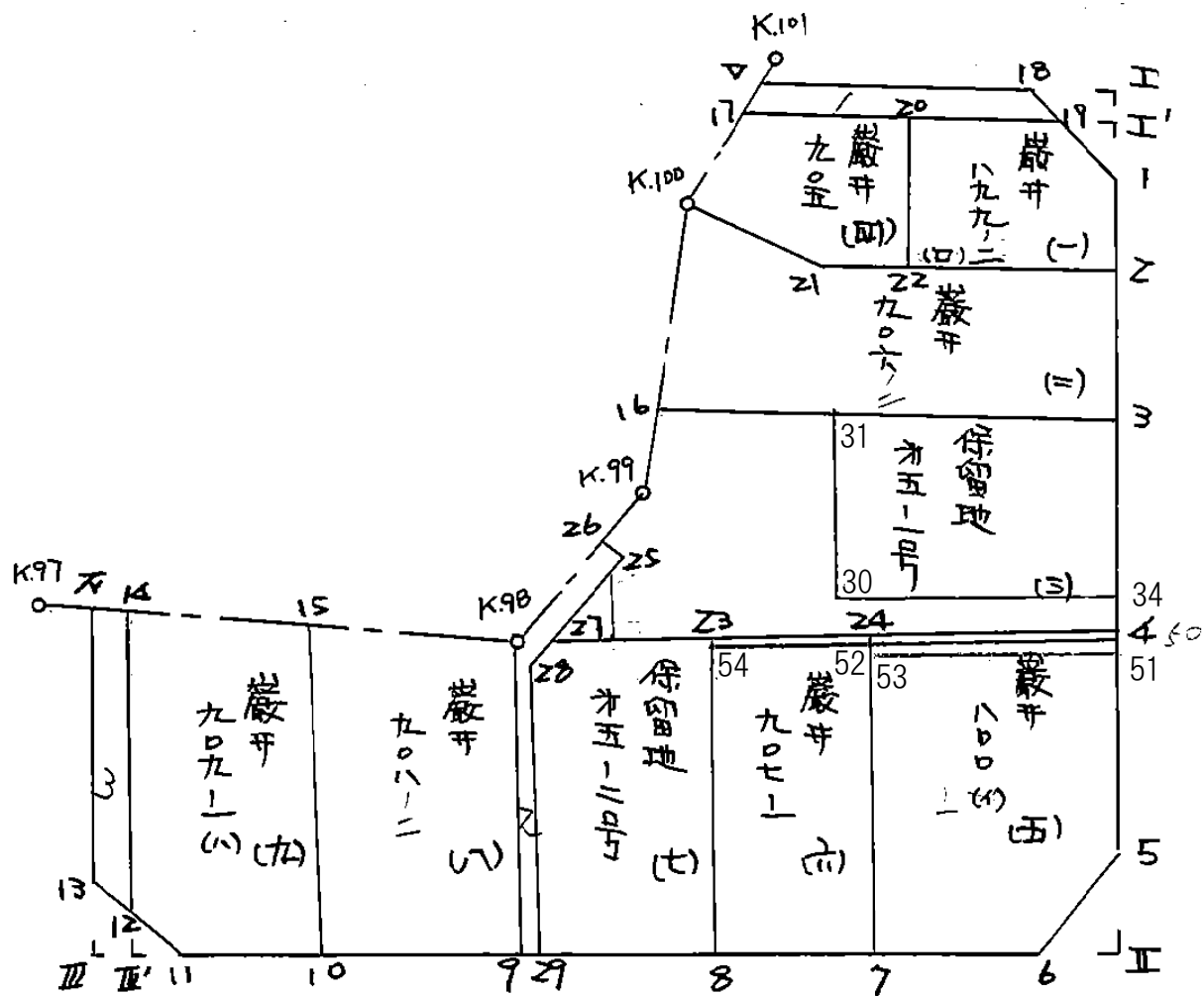
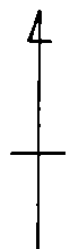
ブロック

5

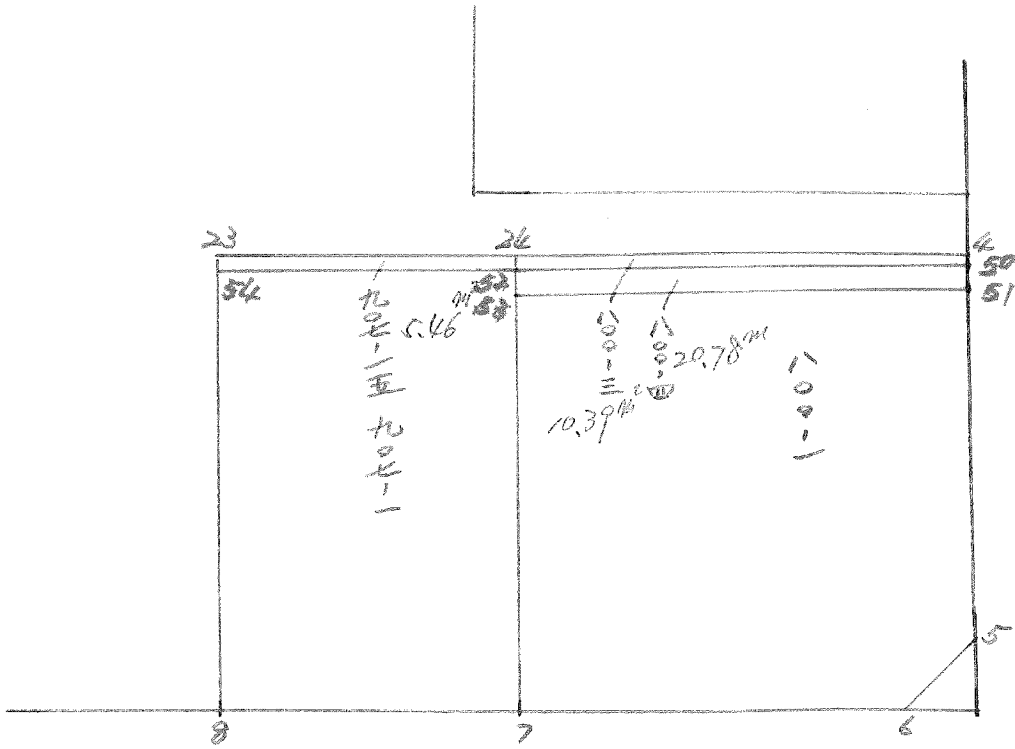
記入者

吉野

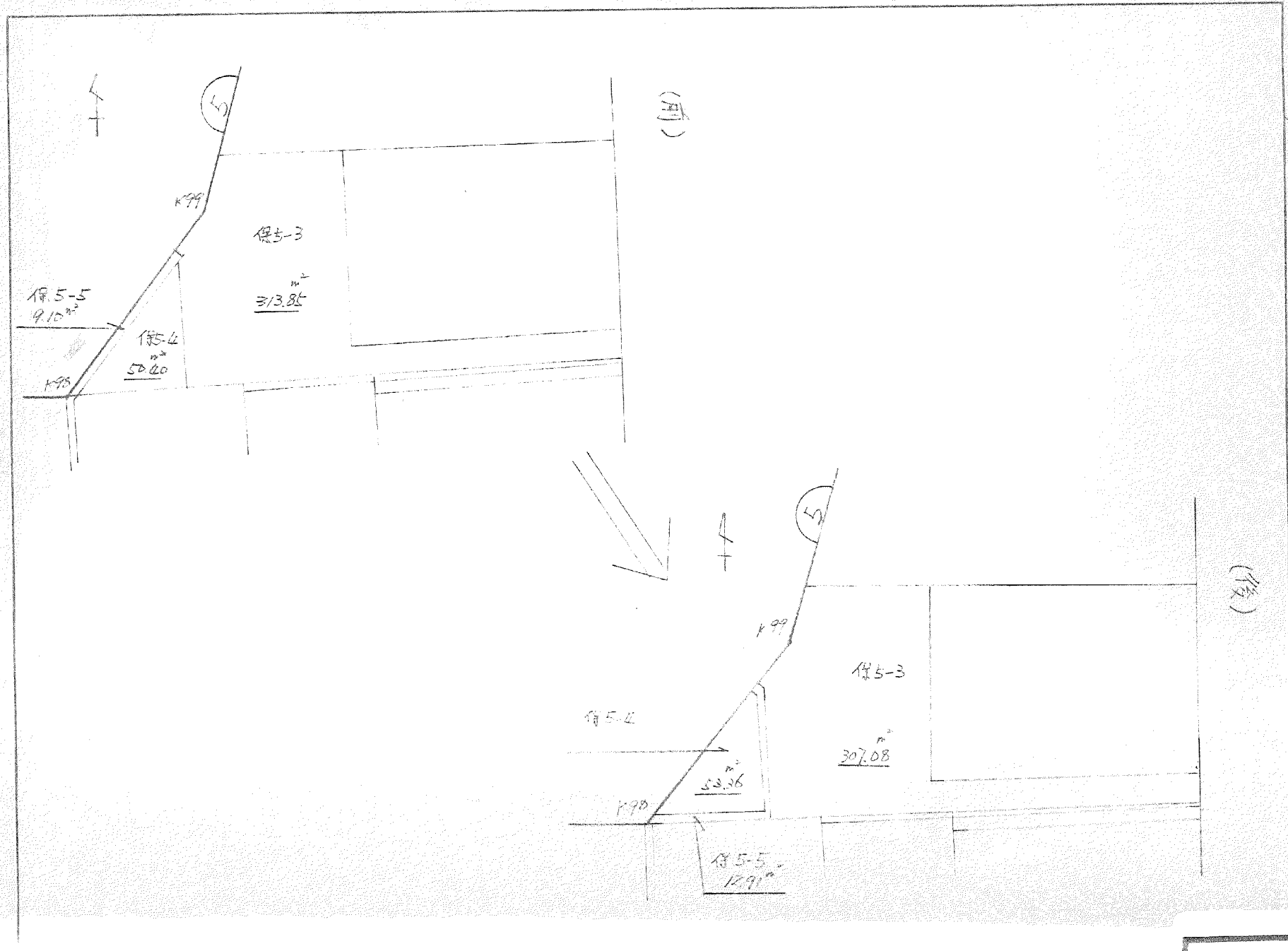
点検者

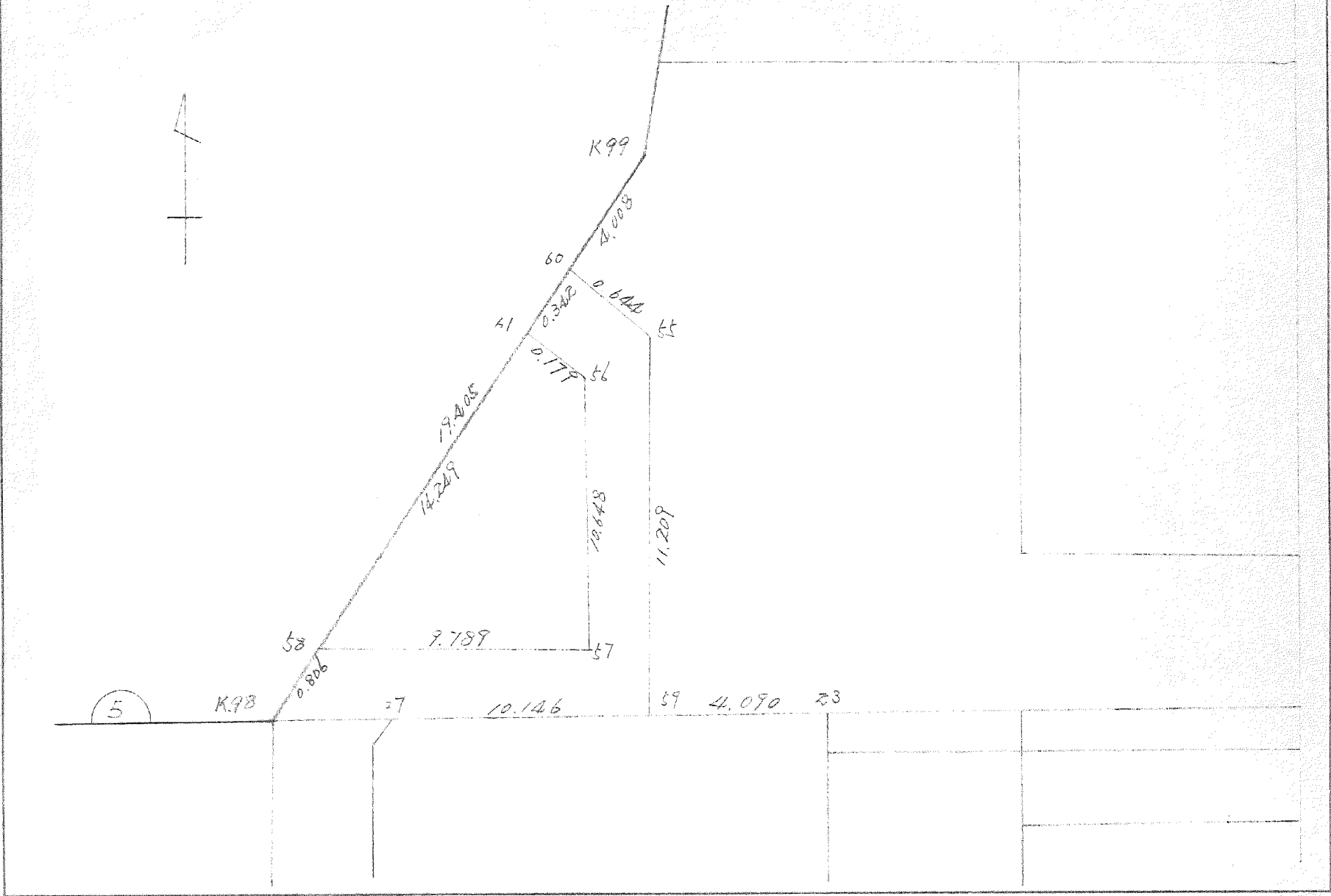


BNo. 5 変更計算



52.93 変更





面積計算書

工区

ブロック

5

計算者

(Handwritten signature)

精算者

(Handwritten mark)

備考

1. 巖井. 899-2(口)
2. 巖井. 906.

点	①	②	③	④	⑤	⑥	③ × ⑤		② × ⑥			
	X	X-(定数)	X _{n-1} -X _{n+1}	Y	Y-(定数)	Y _{n-1} -Y _{n+1}	+	-	+	-		
1	-148. 364.889	-148.360 4.889	+10.869	815.486	-39. 5.486	-1.046			60.175834	5.218494		
2	274.801	14.801	+9.801	815.493	5.493	+14.296			54.386193		213.024696	
22	274.890	14.890	-11.146	827.782	19.782	+14.315	1220.490172				213.150350	
20	363.755	3.755	-10.948	829.808	19.808	-13.243	1217.056064			48.727465		
19	363.822	3.822	+1.234	816.539	6.539	-14.322			8.069126	16.314104		
									437.546236	122.631253	111.260063	426.175046
									314.914883			314.914883
												Y ₂ = 157.4574915
2	-148. 374.801	-148.360 14.801	+20.331	815.493	-39. 5.493	-18.593			111.678183	277.054293		
3	295.218	25.218	+19.888	815.509	5.509	+33.055			109.562992		1164.130990	
16	394.789	34.789	-25.436	848.548	38.548	+25.852	980.506928				899.365228	
K-100	369.782	9.782	-19.902	841.361	31.361	-14.446	624.146622			141.310772		
21	374.887	14.887	+5.119	834.102	24.102	-25.868			123.378138	325.096916		
									1604.653510	344.619313	803.461981	2063.496218
									1260.034237			1260.034237
												Y ₂ = 630.0171185

面積計算書

工
区

ブ
ロ
ック

ト

計
算
者

精
算
者

備
考

5. 蔵平. 800 (1)
6. 蔵井. 907-1

点	①	②	③	④	⑤	⑥	③ × ⑤		② × ⑥	
	X	X-(定数)	X _{n-1} -X _{n+1}	Y	Y-(定数)	Y _{n-1} -Y _{n+1}	+	-	+	-
	-148.	-148.410.0		-39.	-39.810.					
4	413.215	3.315	+20.849	815.423	5.523	-20.790			115.204257	68.918850
5	434.872	24.872	+24.656	815.439	5.539	+3.017			136.569596	75.038824
6	437.971	27.971	+3.660	818.440	8.540	+19.993			31.256400	559.224203
7	438.432	28.432	-23.858	824.432	25.532	+17.789	611.695656			507.555708
24	414.013	4.013	-25.217	826.329	26.329	-20.009	413.938393			80.296117
							1275.634049	83.030241	149.210967	114.818775
							992.603808			992.603808
							$\times \frac{1}{2} = 496.301904$			
	-148.	-148.410.0		-39.	-39.830.					
7	438.432	28.432	+24.880	835.432	5.532	+10.148			137.636160	289.542736
8	438.893	28.893	-24.152	846.477	16.477	+11.740	397.952504			339.203820
23	414.380	4.380	-24.880	847.272	17.272	-10.148	429.727360			44.448240
24	414.013	4.013	+24.152	836.329	6.329	-11.740			157.858008	47.112620
							827.679864	280.494168	91.560860	628.746556
							537.185696			537.185696
							$\times \frac{1}{2} = 268.592848$			

面積計算書

工
区

ブ
ロ
ック

5

計
算
者

精
算
者

備
考

800-1

点	①	②	③	④	⑤	⑥	③ × ⑤		② × ⑥	
	X	X-(定数)	X _{n-1} -X _{n+1}	Y	Y-(定数)	Y _{n-1} -Y _{n+1}	+	-	+	-
5/	-148 414.815	-148400 14.815	+ 19.361	-39 815.524	-39800 15.524	- 20.741			300.560164	307.277915
5	434.872	34.872	+ 23.156	815.539	15.539	+ 3.016			359.821084	105.173952
6	437.971	37.971	+ 3.660	818.540	18.540	+ 19.993			67.856400	759.154203
7	438.532	38.532	- 22.460	835.532	35.532	+ 17.740	798.048720			683.557680
50	415.511	15.511	- 23.717	836.280	36.280	- 20.008	860.452760			310.744088
							1658.501480	728.237648	617.622003	1547.885835
							930.263832			930.263832
							930.263832 × 1/2 = 465.131916			

面積計算書							工区	ブロック	5	計算書	精算書	備考	800-3	800-4
点	①	②	③	④	⑤	⑥	③ × ⑤		② × ⑥					
	X	X-(定数)	X _{n-1} -X _{n+1}	Y	Y-(定数)	Y _{n-1} -Y _{n+1}	+	-	+	-				
4	-148 413.315	-148410 3.315	-0.198	-39 815.523	-39810 5.523	-20.806	1.093554		68.971890					
50	413.815	3.815	+1.197	815.523	5.523	+20.790		6.611031		79.313850				
52	414.512	4.512	+0.198	836.313	26.313	+20.806		5.209974		93.876672				
24	414.013	4.013	-1.197	836.329	26.329	-20.790	31.515813		83.430270					
							32.609367	11.821005	152.402160	173.190522				
							20.788362			20.788362				
							20.788362 × 1/2 = 10.394181							
50	-148 413.815	-148410 3.815	+0.203	-39 815.523	-39810 5.523	-20.789		1.673469	79.310035					
51	414.815	4.815	+1.696	815.524	5.524	+20.757		9.368704		99.944955				
53	415.511	5.511	-0.703	836.280	26.280	+20.789	7.962840			114.568179				
52	414.512	4.512	-1.696	836.313	26.313	-20.757	44.626848		93.655584					
							52.589688	11.042173	172.965619	214.513134				
							41.547515			41.547515				
			496.30	465.13	-10.39 = 20.78 ^{m²}	800-4	41.547515	× 1/2 = 20.773757						

面積計算書

工
区

フ
ロ
ック

フ

計
算
者



精
算
者



備
考

(7) 保才5-2号
(8) 敷# 908

点	①	②	③	④	⑤	⑥	③ × ⑤		② × ⑥	
	X	X - (定数)	X _{n-1} - X _{n+1}	Y	Y - (定数)	Y _{n-1} - Y _{n+1}	+	-	+	-
8	-148. 438.893	-148.410 28.893	+ 24.990	-39. 846.477	-39.840 1.477	+ 13.648		161.860230		394.331664
29	439.370	29.370	- 23.827	860.920	20.920	+ 15.193	498.460840			446.218410
28	415.066	5.066	- 24.513	861.670	21.670	+ 0.579	531.196710			2.933214
27	414.857	11.857	- 0.686	861.489	21.489	- 14.398	14.748314		69.931086	
23	414.380	11.380	+ 24.036	867.272	7.272	- 15.022		176.789792	65.796360	
							1046.405864	336.650022	135.727466	843.683288
							707.755842			707.755842
							x ₁ = 353.877921			
9	-148. 439.390	-148.410.0 29.390	+ 25.178	-39. 861.520	-39.860.0 1.520	+ 18.875		38.270560		554.736250
10	440.038	30.038	- 24.848	881.152	21.152	+ 20.466	525.584896			614.156948
15	414.542	4.542	- 25.178	881.966	21.966	- 18.875	543.059948		85.730250	
11.99	414.860	4.860	+ 24.848	862.277	2.277	- 20.466		56.578896	99.367560	
							1078.648844	94.849456	125.097810	1168.893198
							983.795388			983.795388
							y ₂ = 491.897694			

面積計算書

工
区

フ
ロ
ック

5

計
算
者



精
算
者



備
考

スミキリ 工
スミキリ Ⅱ

点	①	②	③	④	⑤	⑥	③ × ⑤		② × ⑥	
	X	X-(定数)	X _{n-1} -X _{n+1}	Y	Y-(定数)	Y _{n-1} -Y _{n+1}	+	-	+	-
工	-148, 367.946	-148.360 2.946	+ 2.069	-39, 815.484	-39.810 5.484	- 1.998		11.346396	5.886108	
1	364.989	4.989	+ 0.986	815.486	5.486	+ 1.055		5.409196		5.263395
19	363.932	3.932	- 2.069	816.539	6.539	+ 1.998	13.529191			7.856136
18	362.920	2.920	- 0.986	817.484	7.484	- 1.055	7.379224		3.080600	
							20.908415	16.755592	8.966708	13.119531
					<u>4.08</u>		4.152823			4.162823
								$\times \frac{1}{2} = 2.0764115$		
5	-148, 434.872	-148.430 4.872	- 0.099	-39, 815.539	-39.810 5.539	- 2.998	0.548361		14.606256	
Ⅱ	437.872	7.872	+ 3.099	815.542	5.542	+ 3.001		17.174658		23.623872
6	437.971	7.971	- 3.000	818.540	8.540	- 0.003	25.620000		0.023913	
							26.168361	17.174658	14.630169	23.623872
							8.993703			8.993703
								$\times \frac{1}{2} = 4.4968515$		
								<u>4.50</u>		

面積計算書

工
区

ブ
ロ
ック

5

計
算
者



精
算
者



備
考

スミナリ Ⅴ
水路 14号線

点	①	②	③	④	⑤	⑥	③ × ⑤		② × ⑥	
	X	X-(定数)	X _{n-1} -X _{n+1}	Y	Y-(定数)	Y _{n-1} -Y _{n+1}	+	-	+	-
	-108	-148.438		-39	-39.890					
11	440.406	2.406	+ 0.981	892.307	2.307	+ 0.970		2 263167		2.333820
12	440.472	2.472	- 1.933	894.310	4.310	+ 2.069	2 231230			5.114568
13	438.473	0.473	- 0.981	894.376	4.376	- 0.970	4 292856		0.458810	
12	439.491	1.491	+ 1.933	893.340	3.340	- 2.069		6.456220	3.084879	
							12.624086	8.719387	3.543689	7.448388
							3.904699			3.904699
								1/2 = 1.9523495		
								<u>1.95-</u>		
TV	-148	-148.410		-39	-39.890					
14	414.329	4.329	- 24.128	895.170	5.170	- 0.209	124.741760		0.904761	
14	414.305	4.305	+ 25.162	894.107	4.107	- 1.830		104.860054	7.951360	
12	439.491	29.491	+ 24.128	893.340	3.340	+ 0.209		80.487520		6.163619
13	438.473	28.473	- 25.162	894.376	4.376	+ 1.830	110.108912			52.105590
							234.860672	185.437574	8.256111	58.269209
							49.413098			49.413098
								1/2 = 24.706549		
								<u>24.71-</u>		

面積計算書

工
区

フ
ロ
ック

ト

計
算
者

精
算
者

備
考

本路第13号線

点	①	②	③	④	⑤	⑥	③ × ⑤		② × ⑥	
	X	X-(定数)	X _{n-1} -X _{n+1}	Y	Y-(定数)	Y _{n-1} -Y _{n+1}	+	-	+	-
17	-148. 362.679	-148.360.0 2.679	-0.748	-39. 835.480	-39.810.0 25.480	-18.900	19.133840		40.633100	
18	362.920	2.920	+1.243	817.484	7.484	-18.041		9.377452	45.199720	
19	363.932	3.932	+0.748	816.439	6.439	+18.900	4.891172			74.314800
17	363.668	3.668	-1.243	836.384	26.384	+18.041	33.059152			69.842388
							42.192992	14.268624	106.232820	104.157188
							37.924368			37.924368
								1/2 = 18.962184		
								<u>18.96</u>		
26	-148. 402.927	-148.400.0 2.927	-11.443	-39. 852.426	-39.840.0 2.426	-10.216	29.182878		29.902232	
25	403.307	3.307	+12.139	852.061	2.061	+9.144	25.018479			30.239208
28	415.066	15.066	+36.063	861.670	11.670	+8.859	420.855210			133.469694
29	439.370	39.370	+24.324	860.920	10.920	-0.150	265.618080		4.905100	
9	439.390	39.390	-24.410	861.420	11.420	+1.347	282.355200			43.452230
K-98	414.860	14.860	-36.463	862.277	12.277	-8.994	447.656251		133.650840	
							769.194329	711.491769	169.458572	217.161132
							47.702560			47.702560
								1/2 = 23.851280		

面積計算書

工区

ブロック

5

計算者

精算者

備考

保 5-5号
保 5-6号

点	①	②	③	④	⑤	⑥	③ × ⑤		② × ⑥	
	X	X-(定数)	X _{n-1} -X _{n+1}	Y	Y-(定数)	Y _{n-1} -Y _{n+1}	+	-	+	-
25	403.307	3.307	+ 11.930	852.061	2.061	+ 8.973			26.587730	29.673711
27	414.857	14.857	+ 14.553	861.499	11.499	+ 10.216			132.847967	151.779112
K98	414.860	14.860	- 11.930	862.277	12.277	- 8.973	146.466610		133.338780	
26	402.927	2.927	- 11.553	852.526	2.526	- 10.216	29.182878		29.902232	
							175.607689	157.435677	163.261012	181.452823
							18.211811			18.211811
							x/2 = 9.1059055			
27	414.857	14.857	+ 0.206	861.499	1.499	- 0.607			0.308794	9.018199
28	415.066	15.066	+ 24.513	861.670	1.670	- 0.579			40.936710	8.723214
29	439.370	39.370	+ 24.824	860.920	0.920	- 0.150			22.378080	5.905500
9	439.390	39.390	- 24.510	861.520	1.520	+ 1.357	37.255200			53.452230
K98	414.860	14.860	- 24.533	862.277	2.277	- 0.021	55.861641		0.312060	
							93.116841	63.623584	23.959973	53.452230
							29.493257			29.493257
							x/2 = 14.7466285			

面積計算書

工区

ブロック

5

計算者



精算者

備考

保留地5-5号

点	①	②	③	④	⑤	⑥	③ × ⑤		② × ⑥	
	X	X-(定数)	X _{n-1} -X _{n+1}	Y	Y-(定数)	Y _{n-1} -Y _{n+1}	+	-	+	-
60	-148 402.938	-148.650 2.938	+ 0.124	-39 852.534	-39.850 2.534	- 0.730		0.314216	2.104740	
55	403.327	3.327	+ 11.579	852.021	2.021	- 1.176		23.401159	3.912552	
59	414.517	14.517	+ 11.530	851.358	1.358	+ 9.478		15.657740		127.592126
27	414.857	14.857	+ 0.343	861.499	11.499	+ 10.919		3.944157		162.223583
K98	414.860	14.860	- 0.621	862.277	12.277	+ 0.268	7.624017			3.932480
58	414.236	14.236	- 0.927	861.767	11.767	- 10.294	10.908009		146.545384	
57	413.933	13.933	- 10.933	851.983	1.983	- 9.164	21.680139		127.682012	
56	403.303	3.303	- 10.730	852.603	2.603	+ 0.768	27.930190			2.536704
61	403.203	3.203	- 0.365	852.751	2.751	- 0.069	1.004115		0.221007	
							69.146470	43.37272	280.505695	706.334893
							25.829198			25.829198
								1/2 = 12914599		

面積計算書

工区

ブロック

f

計算者



精算者



備考

3. 保留地. 市土-1号.
4. 巖井. 90f

点	①	②	③	④	⑤	⑥	③ × ⑤		② × ⑥	
	X	X-(定数)	X _{n-1} -X _{n+1}	Y	Y-(定数)	Y _{n-1} -Y _{n+1}	+	-	+	-
	-148.	-148.370.0		-37.	-37.810.0					
3	375.218	5.218	+18.526	815.509	5.509	-33.025		102.059734	172.224450	
4	413.315	23.315	+19.639	815.523	5.523	+45.990		108.466197		1072.246850
27	414.857	24.857	-10.008	861.499	5.499	+36.538	515.401992			908.225066
25	403.307	12.307	-11.930	852.061	42.061	-8.973	501.787730		119.403711	
26	402.927	12.927	-3.473	852.526	42.526	-2.063	147.692798		26.668401	
K.99	399.834	9.834	-8.138	849.998	39.998	-3.928	325.603724		29.119642	
16	394.789	4.789	-4.616	848.548	38.548	-34.489	177.937668		165.167821	
							1668.323812	210.521921	522.684035	1980.481916
							1057.797881			1457.797881
									X ^{1/2} = 728.8989405	
20	363.755	3.755	+11.222	829.808	9.808	-6.602		110.065376	24.790510	
22	374.890	14.890	+11.132	829.782	9.782	+4.294		108.893224		69.937660
21	374.887	14.887	-5.108	834.102	14.102	+11.579	72.933016			172.376573
K.100	369.782	9.782	-11.219	841.361	21.361	+2.282	239.649059			22.322524
17	363.668	3.668	-6.027	836.384	16.384	-11.553	99.746368		42.376404	
							410.428443	219.958600	67.166914	258.636757
							191.469843			191.469843

X^{1/2} = 95.7342215 三和地区建設株式会社

面積計算書

工
区

ブ
ロ
ック

5

計
算
者

精
算
者

備
考

保 5-1
保 5-3

点	①	②	③	④	⑤	⑥	③ × ⑤		② × ⑥	
	X	X-(定数)	X _{n-1} -X _{n+1}	Y	Y-(定数)	Y _{n-1} -Y _{n+1}	+	-	+	-
23	395.218	5.218	+15.890	815.509	5.509	-22.606			87.538010	117.958108
24	410.814	20.814	+16.355	815.521	5.521	+22.629			90.295155	471.000006
20	411.573	21.573	-15.890	838.138	28.138	+22.606	447.112820			487.679238
21	414.924	4.924	-16.355	838.127	28.127	-22.629	460.017085		111.425116	
							107.129905	177.839165	229.382504	158.679244
							729.295155			729.295155
							x 1/2 = 364.647170			
24	410.814	20.814	+1.742	815.521	5.521	-22.615			1.617582	470.708610
4	413.315	23.315	+3.728	815.523	5.523	+36.593			20.589744	853.165715
22	414.542	24.542	-9.502	852.114	42.114	+36.952	400.167228			906.875984
33	403.813	13.813	-11.235	852.475	42.475	-0.053	477.206625		0.732089	
25	403.307	13.307	-0.886	852.061	42.061	+0.051	37.266046			0.678657
26	402.927	12.927	-3.473	852.526	42.526	-2.063	147.692718			26.668401
K99	414.834	1.834	-8.138	849.998	39.998	-3.798	325.503724			39.111652
16	414.789	4.789	-4.110	848.548	38.548	-11.871	189.270680			56.850219
21	394.924	4.924	+16.784	838.127	28.127	-10.410			472.983568	51.258840
20	411.573	21.573	+15.890	838.138	28.138	-22.606	447.112820		487.679238	

変更調書列

1577.107101 949.403714 1733.017011 1760.720626
627.703387 x 1/2 = 313.8516935 627.703387

面積計算書

工区

ブロック

5

計算者



精算者



備考

保5-3

点	①	②	③	④	⑤	⑥	③ × ⑤		② × ⑥	
	X	X-(定数)	X _{n-1} -X _{n+1}	Y	Y-(定数)	Y _{n-1} -Y _{n+1}	+	-	+	-
2.99	-148 399.834	-148.390 9.834	- 8.149	-37 307.998	-39.800 49.998	- 3.986	407.433702		39.198324	
16	394.789	4.789	- 4.910	308.518	48.518	- 11.871	238.370680		56.250219	
21	394.924	4.924	+ 16.784	308.127	38.127	- 10.410		639.923568	51.258840	
30	411.573	21.573	+ 15.890	308.138	38.138	- 22.606		666.012820	487.679238	
34	410.814	20.814	+ 1.742	315.521	15.521	- 22.615		27.037682	470.708610	
4	413.315	23.315	+ 3.703	315.523	15.523	+ 35.837		57.481669		335.539655
59	414.517	24.517	- 9.988	351.358	51.358	+ 36.498		512.963704		894.821466
55	403.327	13.327	- 11.579	352.021	52.021	+ 1.176		602.351159		15.672552
60	402.938	12.938	- 3.493	352.534	52.534	- 2.023		183.501262		26.173574
								1904.620507	1330.455639	1131.268825
								614.164868		614.164868
								1/2=307.082134		

面積計算書

工
区

ブ
ロ
ック

5

計
算
者

精
算
者

備
考

保-5-4

点	①	②	③	④	⑤	⑥	③ × ⑤		② × ⑥		
	X	X-(定数)	X _{n-1} -X _{n+1}	Y	Y-(定数)	Y _{n-1} -Y _{n+1}	+	-	+	-	
21	403.813	-108.400	-0.315	852.475	-37.850	-9.385	0.779625		25.785005		
22	414.542	14.542	+11.024	852.114	2.114	+9.024		23.347016		131.227008	
27	414.857	14.857	-10.729	861.449	11.449	+0.361		123.372771		5.363377	
								123.372771	23.347016	25.785005	136.590385
								100.805380			100.805380
								x 1/2 = 50.402690			

面積計算書							工区	ブロック	5	計算者	精算者	備考	保5-4号
点	①	②	③	④	⑤	⑥	③ × ⑤		② × ⑥				
	X	X-(定数)	X _{n-1} -X _{n+1}	Y	Y-(定数)	Y _{n-1} -Y _{n+1}	+	-	+	-			
61	403.203 403.203	3.203 3.203	-10.933	852.751	2.751	-9.164	30.076683		29.352292				
56	403.303	3.303	+10.730	852.603	2.603	-0.768		27.930190	2.536704				
57	413.933	13.933	+10.933	851.983	1.983	+9.164		21.680139		127.682012			
58	414.236	14.236	-10.730	861.767	11.767	+0.768	126.259910			10.923248			
							156.336593	49.610329	3.888996	138.615260			
							106.726264			106.726264			
								1/2=53.363132					

計年月算日	計算者	検査者	Bit
-------	-----	-----	-----

B. NO. 5

各筆面積計算書

地番	算式	隅切	地積	摘要
1	巖井 899-2(口)		157 45	
2	" 906		630 01	(5-3 5-4 元
3	保留地 5-1号		364 64	分割地積 (728.89)
4	巖井 905		95 73	800-1 465.13
5	" 800 (口)		496 30	800-3 10.39
6	" 907-1		268 59	800-4 22.78 907-15 5.66 907-1 263.13
7	保留地 5-2号		353 87	
8	巖井 908		491 89	
9	" 909-1 (口)		313 76	
10	保留地 5-3号		313 85	
11	" 5-4号		50 40	
12	" 5-5号		9 10	... 側溝
13	" 5-6号		14 74	... "
		合計	3,560 33	
		全体	3,560 37	
		差	-0 04	
			2,453 73	宅地 7筆
			1,106 60	保留地 6筆
			18 96	水路 13号線
			24 71	" 14号線