

街区略図

工区

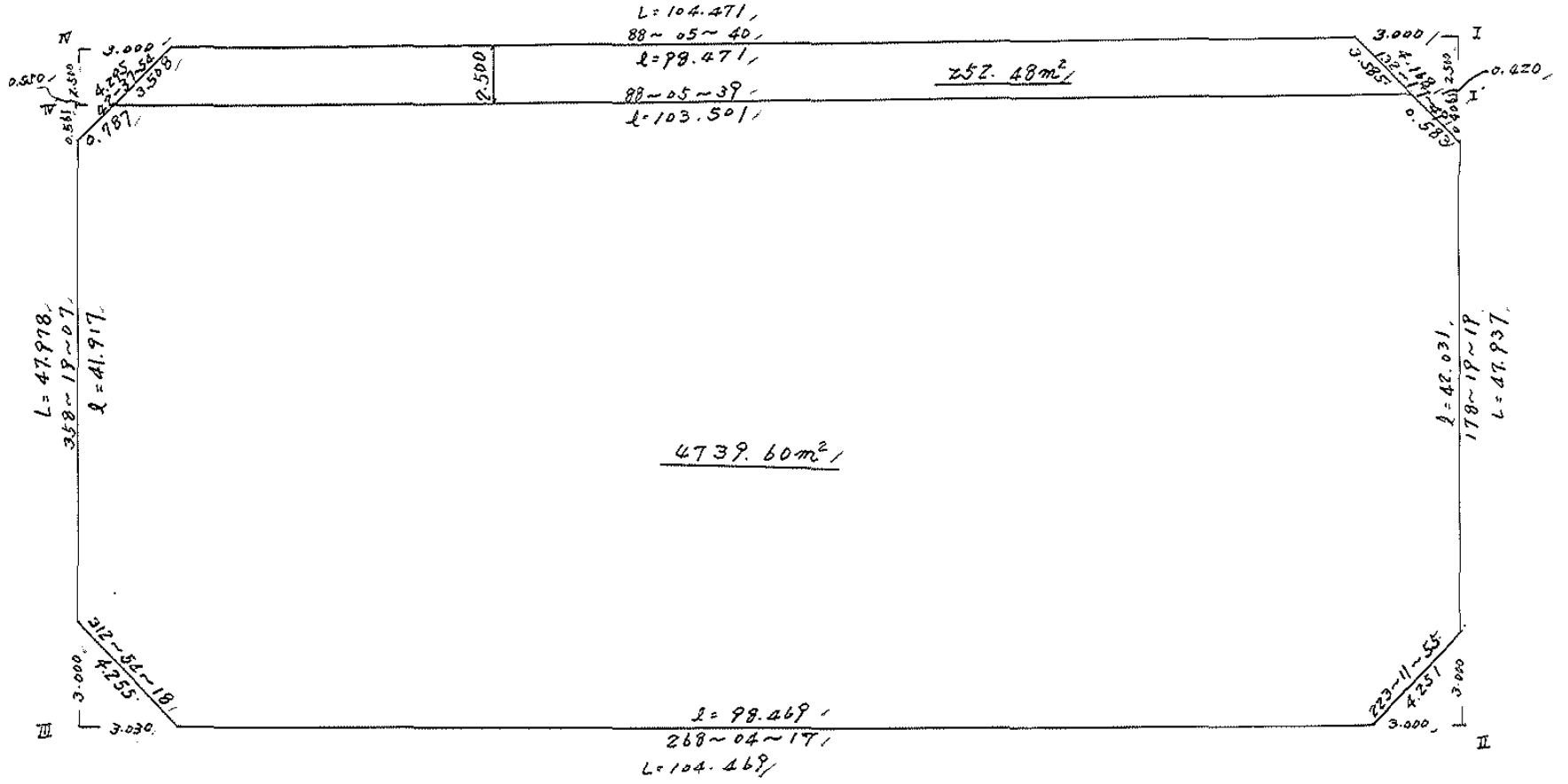
ブロック

32

記入者



点検者



面積計算書

工
区

ブ
ロ
ック

32

計
算
者

精
算
者

備
考

全体

点	①	②	③	④	⑤	⑥	③ × ⑤		② × ⑥	
	X	X-(定数)	X _{n-1} -X _{n+1}	Y	Y-(定数)	Y _{n-1} -Y _{n+1}	+	-	+	-
I	-148 505.117	148.500 - 5.117	+ 44.442	-39 911.660	39.910 - 1.660	- 105.817		73.773720	541.465589	
II	553.033	- 53.033	+ 51.432	910.256	- 0.256	+ 103.006		13.166592		5462.717198
III	556.549	- 56.549	- 44.442	-40 014.666	- 104.666	+ 105.817	4651.566372			5983.845533
IV	508.591	- 8.591	- 51.432	016.073	- 106.073	- 103.006	5455.546536		884.924546	
							10107.112908	86.940312	1476.390135	11446.562731
							10020.172596			10020.172596
								1/2=5010.086298		
				修正 I	II	III	IV			
										5010.08 - (4.36 + 4.56 + 4.55 + 4.59) = 4992.08 - 252.48 = 4739.60
					12.0					

画地計算

画地略図

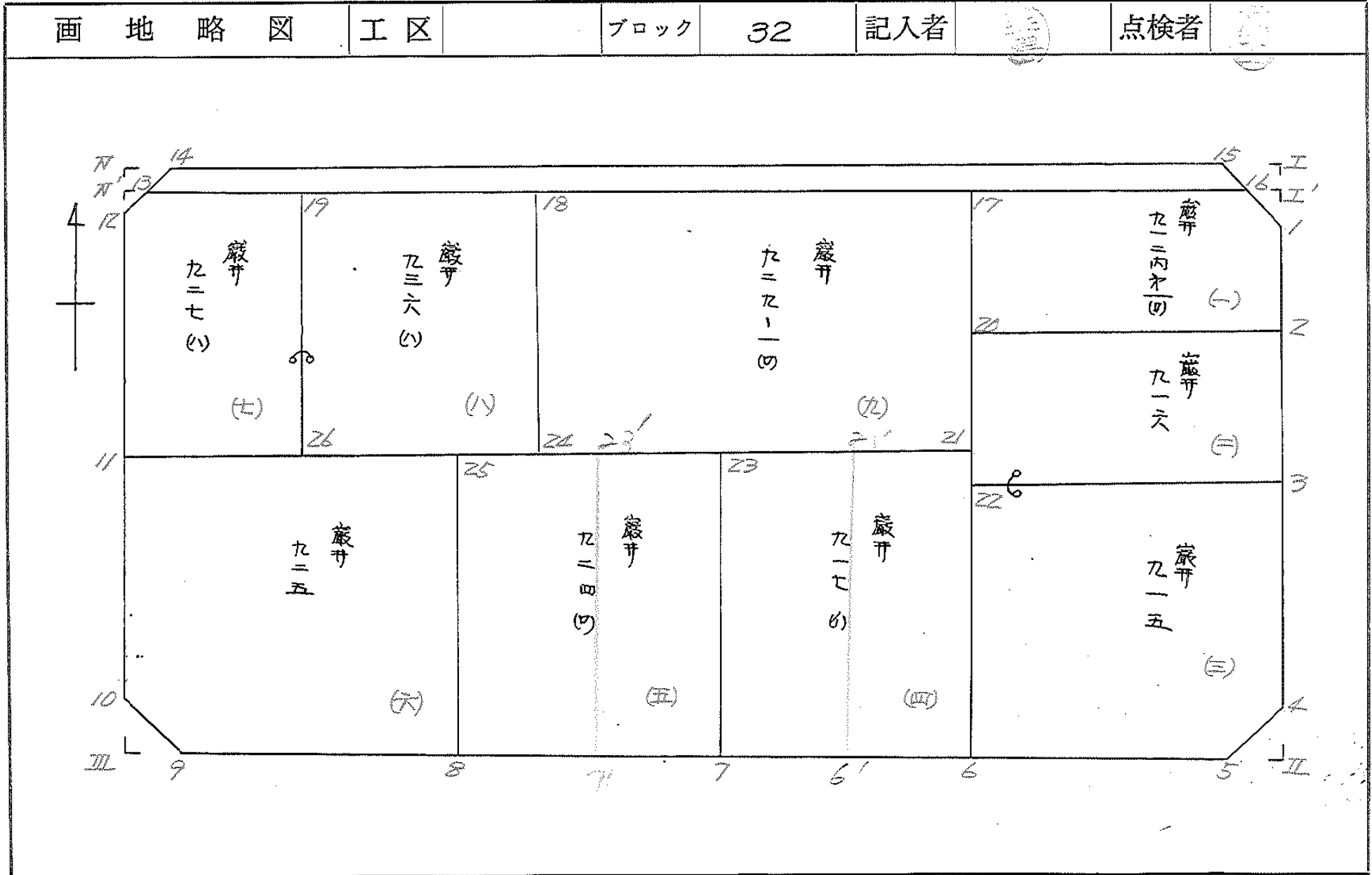
工区

ブロック

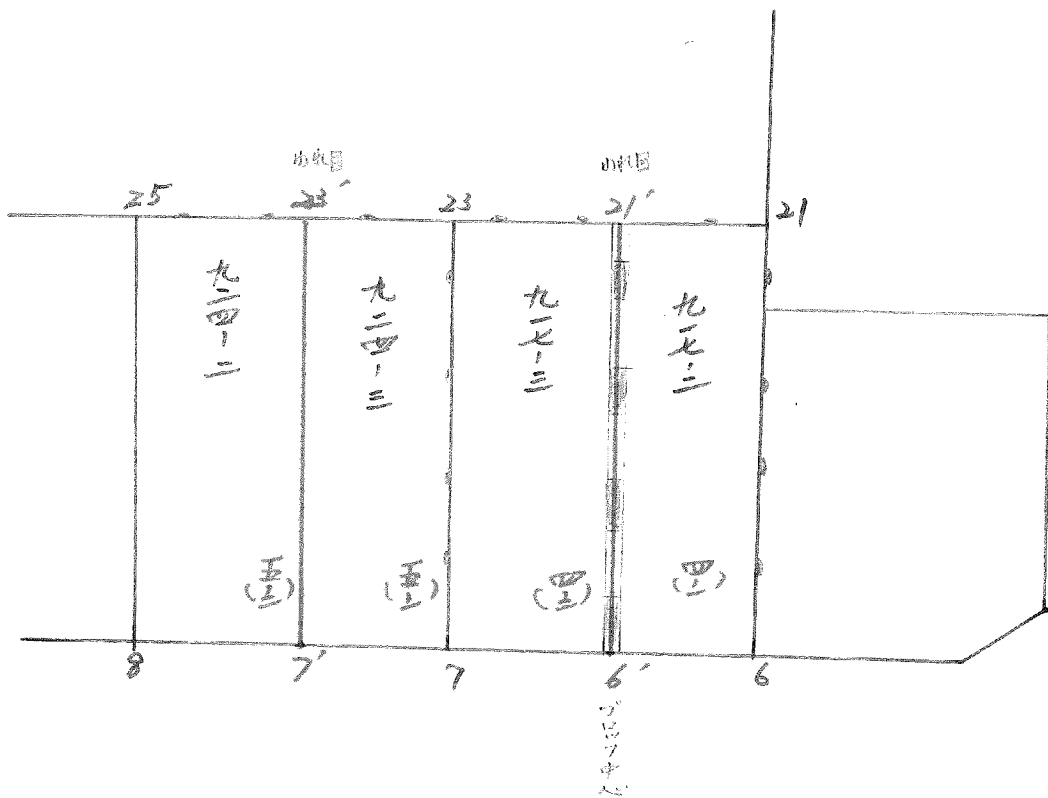
32

記入者

点検者



BN0.32 分割計算



面積計算書

工区

ブロック

22

計算者

精算者

備考

敷#912内才-(0) 敷#916 (-) (=)

点	①	②	③	④	⑤	⑥	③ × ⑤		② × ⑥	
	X	X-(定数)	X _{n-1} -X _{n+1}	Y	Y-(定数)	Y _{n-1} -Y _{n+1}	+	-	+	-
16	-148,507.630	^{-148,500.} 7.630	- 0.600	-39,912.007	^{-39,910} 2.007	- 30.256	1,206,6200		230,853,280	
1	508.022	8.022	+ 13.613	911.575	1.575	- 0.819		21,440,475	6,570,018	
2	521.243	21.243	+ 14.279	911.188	1.188	+ 29,802		16,963,452		633,083,880
20	522.301	22.301	- 12.621	941.377	31.377	+ 30,543	296,009,117			683,369,443
17	508.622	8.622	- 14.571	941.831	31.831	- 29,370	466,992,601		253,228,140	
							866,205,918	38,403,927	490,651,438	1316,453,429
							825,801,991			825,801,991
									72 = 412,900,995	
2	-148,521.243	^{-148,520} 1.243	+ 8.700	-39,911.188	^{-39,910} 1.188	- 30.475		10,335,600	37,880,425	
3	531.001	11.001	+ 10.802	910.902	0.902	+ 29,865		9,743,404		329,544,865
22	532.045	12.045	- 8.700	941.053	31.053	+ 30.475	270,161,100			367,071,375
20	522.301	2.301	- 10.802	941.377	31.377	- 29,865	338,934,356		68,719,365	
							609,095,454	20,079,004	106,599,790	695,616,240
							589,016,450			589,016,450
									72 = 296,508,225	

面積計算書

工区

ブロック

32

計算者



精算者



備考

巖#915 (三) 巖#917(四)

点	①	②	③	④	⑤	⑥	③ × ⑤		② × ⑥	
	X	X-(定数)	X _{n-1} -X _{n+1}	Y	Y-(定数)	Y _{n-1} -Y _{n+1}	+	-	+	-
3	-148.531.001	^{-148.530} 1.001	+ 17.990	-39.910.902	^{-39.910} 0.902	- 30.709		16.226980	30.739709	
4	550.035	20.035	+ 22.133	910.344	0.344	+ 2.352		7.613752		47.122320
5	553.134	23.134	+ 4.010	913.254	3.254	+ 29.978		12.048540		693.511052
6	554.045	24.045	- 21.089	940.322	30.322	+ 27.799	639.460658			668.426955
22	532.045	2.045	- 23.044	941.053	31.053	- 29.420	715.585332		60.163900	
							1255.045990	36.889272	90.903609	1409.060327
							1318.156718			1318.156718
								$\frac{1}{2} = 659.078359$		
21	-148.531.086	^{-148.530} 1.086	+ 22.198	-39.941.085	^{-39.940} 1.085	- 23.542		24.084830	25.566612	
6	554.045	24.045	+ 23.726	940.322	0.322	+ 22.011		7.639772		529.254495
7	554.812	24.812	- 22.198	963.096	23.096	+ 23.542	512.685008			584.124104
23	531.847	1.847	- 23.726	963.864	23.864	- 22.011	566.197264		40.654317	
							1078.882272	31.724602	66.220929	1113.378599
							1047.157670			1047.157670
								$\frac{1}{2} = 523.578825$		

面積計算書							工区	ブロック	32	計算者	精算者	備考	(4-1) 917-2	(4-2) 917-3
点	①	②	③	④	⑤	⑥	③ × ⑤		② × ⑥					
	X	X-(定数)	X _{n-1} -X _{n+1}	Y	Y-(定数)	Y _{n-1} -Y _{n+1}	+	-	+	-				
21	^{-108.} 531.086	^{-108.530.} 1.086	+ 22.570	^{-39.} 941.085	^{-39.940.} 1.085	- 12.278			24.492790	13.333908				
6	554.045	24.045	+ 23.347	940.322	0.322	+ 10.761			7.517734	258.708245				
6'	554.433	24.433	- 22.570	951.846	11.846	+ 12.278	267.411604			299.883740				
21'	531.471	1.471	- 23.307	952.600	12.600	- 10.761	294.172200			15.829431				
							561.523804	32.010524	29.163339	558.736619				
							529.573280			529.573280				
									$\frac{1}{2} = 264.786640$					
21'	^{-108.} 531.471	^{-108.530.} 1.471	+ 22.586	^{-39.} 952.600	^{-39.950.} 2.600	- 12.018			58.723600	17.678478				
6'	554.433	24.433	+ 23.341	951.846	1.846	+ 10.496			43.087486	256.448768				
7	554.812	24.812	- 22.586	963.096	13.096	+ 12.018	295.786256			298.190616				
23	531.867	1.867	- 23.341	963.864	13.864	- 10.496	323.599624			19.386112				
							619.385880	101.811086	37.064590	550.639384				
							517.570794			517.570794				
									$\frac{1}{2} = 258.787397$					
										523.57-264.78=258.79... 917-3				

面積計算書

工区

ブロック

32

計算者

(S)

精算者

(S)

備考

層#924(口) (五) 層#925 (六)

点	①	②	③	④	⑤	⑥	③ × ⑤		② × ⑥	
	X	X-(定数)	X _{n-1} -X _{n+1}	Y	Y-(定数)	Y _{n-1} -Y _{n+1}	+	-	+	-
23	-148.531.847	-148.530 1.847	+ 22.230	-39.963.864	-39.960 3.864	- 22.754		85.896720	42.026638	
7	554.812	24.812	+ 23.706	963.096	3.096	+ 21.217		73.393776		526.436204
8	555.553	25.553	- 22.230	965.081	25.081	+ 22.754	557.550630			581.432962
25	522.582	2.582	- 23.706	985.850	25.850	- 21.217	612.800100		54.782294	
							1170.350730	159.290496	96.808932	1107.869166
							1011.060234			1011.060234
								1/2 = 505.530117		
25	-148.532.582	-148.530 2.582	+ 21.986	-39.985.850	-39.980 5.850	- 20.260		128.618100	78.131320	
8	555.553	25.553	+ 23.865	985.081	5.081	+ 25.787		121.258065		658.935211
9	556.447	26.447	- 2.003	-40.011.637	31.637	+ 29.673	63.368911			784.761831
10	553.550	23.550	- 22.880	014.754	34.754	+ 3.704	795.171520			87.229200
11	533.567	3.567	- 20.968	015.341	35.341	- 28.904	741.030088		103.100568	
							1599.570519	249.876165	181.231888	1330.926242
							1349.694354			1349.694354
								1/2 = 674.847177		

面積計算書		工 区	ブ ロ ック	32	計 算 書	精 算 書	備 考	(5-1) 924-3	(5-2) 924-2
点	①	②	③	④	⑤	⑥	⑧ × ⑤	② × ⑥	
	X	X-(定数)	X _{n-1} -X _{n+1}	Y	Y-(定数)	Y _{n-1} -Y _{n+1}	+ -	+ -	
23	^{-148.} 531.867	^{-148.530.} 1.847	+ 22.598	^{-37.} 963.864	^{-37.960} 3.864	- 11.756	87.318672	21.713332	
7	554.812	24.812	+ 23.335	963.096	3.096	+ 10.230	72.245160	253.826760	
7'	555.182	25.182	- 22.598	974.094	14.094	+ 11.756	318.496212	296.039592	
23'	532.214	2.214	- 23.335	976.852	14.852	- 10.230	346.571420	22.649220	
							665.067632	159.563832	44.362552
							505.503800		505.503800
							$\frac{1}{2} 252.751900$		
23'	^{-148.} 532.214	^{-148.530} 2.214	+ 22.600	^{-37.} 974.852	^{-37.970.} 4.852	- 11.756	109.655200	26.027784	
7'	555.182	25.182	+ 23.339	974.094	4.094	+ 10.229	95.549866	257.586678	
8	555.553	25.553	- 22.600	985.081	15.081	+ 11.756	340.830600	300.401068	
25	532.582	2.582	- 23.339	985.850	15.850	- 10.229	369.923150	26.411278	
							710.753750	205.205066	52.439062
							505.508684		505.508684
							$\frac{1}{2} = 252.774342$		
			$505.53 - 252.75 = 252.78 \dots 924-2$						

面積計算書

工
区

ブ
ロ
ック

32

計
算
者



精
算
者



備
考

巖井 927(ハ) 巖井 936(ハ) (ハ)

点	①	②	③	④	⑤	⑥	③ × ⑤		② × ⑥	
	X	X-(定数)	X _{n-1} -X _{n+1}	Y	Y-(定数)	Y _{n-1} -Y _{n+1}	+	-	+	-
19	-148.510.576	^{-148.510} 0.576	+21.975	-40.000.549	^{-39.990} 10.549	-15.666		231.814.275	9.023.616	
26	533.047	23.047	+22.991	-39.999.785	9.785	+14.792		224.966.935		340.911.224
11	533.567	23.567	-21.396	-40.015.341	25.341	+16.199	542.196.036			381.761.833
12	511.651	1.651	-22.495	015.984	25.984	+0.110	584.510.080			0.181.610
13	511.072	1.072	-1.075	015.451	25.451	-15.435	27.359.825		16.546.320	
							1154.065.941	456.781.210	25.569.936	772.854.667
							697.284.731			697.284.731
							1/2 = 348.642.365.5			
18	-148.509.942	^{-148.500} 9.942	+21.834	-39.981.482	^{-39.980} 1.482	-19.828		32.357.988	197.129.976	
24	532.410	32.410	+23.105	980.721	0.721	+18.303		16.658.705		593.200.230
26	533.047	33.047	-21.834	999.785	19.785	+19.828	431.985.690			655.255.916
19	510.576	10.576	-23.105	-40.000.549	20.549	-18.303	474.784.645		193.572.528	
							906.770.335	49.016.693	390.702.504	1248.456.146
							857.753.642			857.753.642
							1/2 = 428.876.821			

面積計算書

工区

ブロック

32

計算者

(印)

精算者

(印)

備考

巖井 929-1 (0) (九)

点	①	②	③	④	⑤	⑥	③ × ⑤		② × ⑥	
	X	X - (定数)	X _{n-1} - X _{n+1}	Y	Y - (定数)	Y _{n-1} - Y _{n+1}	+	-	+	-
17	-148.508622	^{-148.500} 8.622	+ 21.144	-39.941.831	^{-39.940} 1.831	- 40.397		38.714664	348.302934	
21	531.086	31.086	+ 23.788	941.085	1.085	+ 38.890		25.809980		1208.934540
24	532.410	32.410	- 21.144	980.721	40.721	+ 40.397	861.004824			1309.266770
18	509.942	9.942	- 23.788	981.482	41.482	- 38.890	986.773816		386.644380	
							1847.778640	64.524644	734.947314	2518.201310
							1783.253996			1783.253996
								1/2 = 891.626998		

面積計算書

工区

ブロック

32

計算者

精算者

備考

陽平工.
" Ⅱ.

点	①	②	③	④	⑤	⑥	③ × ⑤		② × ⑥	
	X	X-(定数)	X _{n-1} -X _{n+1}	Y	Y-(定数)	Y _{n-1} -Y _{n+1}	+	-	+	-
I	-148,505.117	-148,500.0 5.117	+2.805	-39,911.660	-39,900.0 11.660	-3.083		32.706300	15.775711	
1	-148,508.022	8.022	+0.100	-39,911.575	11.575	+2.998		1.157500		24.049956
15	-148,505.217	5.217	-2.905	-39,914.658	14.658	+0.085	42.581490			0.443445
							42.581490	33.863800	15.775711	24.493401
							8.717690			8.717690
										1/2 = 4.358845
Ⅱ	-148,553.033	-148,550.0 3.033	+3.099	-39,910.256	-39,910.0 0.256	+2.910		0.739344		8.826030
4	-148,553.134	3.134	-2.998	-39,913.254	3.254	+0.088	9.755492			0.275792
4	-148,550.035	0.035	0.101	-39,910.344	0.344	-2.998	0.034744		0.104930	
							9.790236	0.793344	0.104930	9.101822
							8.996892			8.996892
										1/2 = 4.498446

面積計算書

工
区

フ
ロ
ック

32

計
算
者

精
算
者

備
考

隔切Ⅲ・Ⅳ

点	①	②	③	④	⑤	⑥	③ × ⑤		② × ⑥	
	X	X-(定数)	X _{n-1} -X _{n+1}	Y	Y-(定数)	Y _{n-1} -Y _{n+1}	+	-	+	-
Ⅲ	-148,556.549	^{-148.550} 6.549	-2.897	-40,014.666	^{-40.010} 4.666	+3.117	13,517.402			20,413.233
10	553.550	3.550	-0.102	014.754	4.754	-3.029	0.484908		10.752950	
9	556.447	6.447	+2.999	011.637	1.637	-0.088		4.909363	0.567336	
							14,002310	4,909363	11,320286	20,413233
							9,092947			9,092947
								½=4,5464735		
Ⅳ	-148,508.591	^{-148.500} 8.591	-3.160	-40,016.073	^{-40.010} 6.073	-2.909	19,190680		24,991219	
14	508,491	8,491	+3.060	013,075	3,075	-0.089		9,409500	0,755699	
12	511.651	11.651	+0.100	015,984	5,984	+2.998		0,598400		34,929698
							19,190680	10,007900	25,746918	34,929698
							9,182780			9,182780
								½=4,591390		

面積計算書

工
区

フ
ロ
ック

JZ

計
算
者

精
算
者

備
考

水路4号線 2.5M

計年 月 算日	計算者	検査者
---------------	-----	-----

B. NO. 32

各筆面積計算書

地番	算式	隅切	地積	摘要
1	巖井 912 内才1(口)		412 90/	
2	" 916		294 50/	
3	" 915		659 07/	
4	" 917 (1)		520 57/	917-2 264.78 917-3 258.79
5	" 924 (口)		505 53/	924-3 252.75 924-2 252.78
6	" 925		674 84/	
7	" 927 (ハ)		348 64/	
8	" 936 (ハ)		428 87/	
9	" 929-1(口)		891 62/	
		計	4739 54/	
		全体	4739 60/	
		差	- 0 06/	
	空地		4739 54/	9筆
	水路4線		252 48/	2.5M