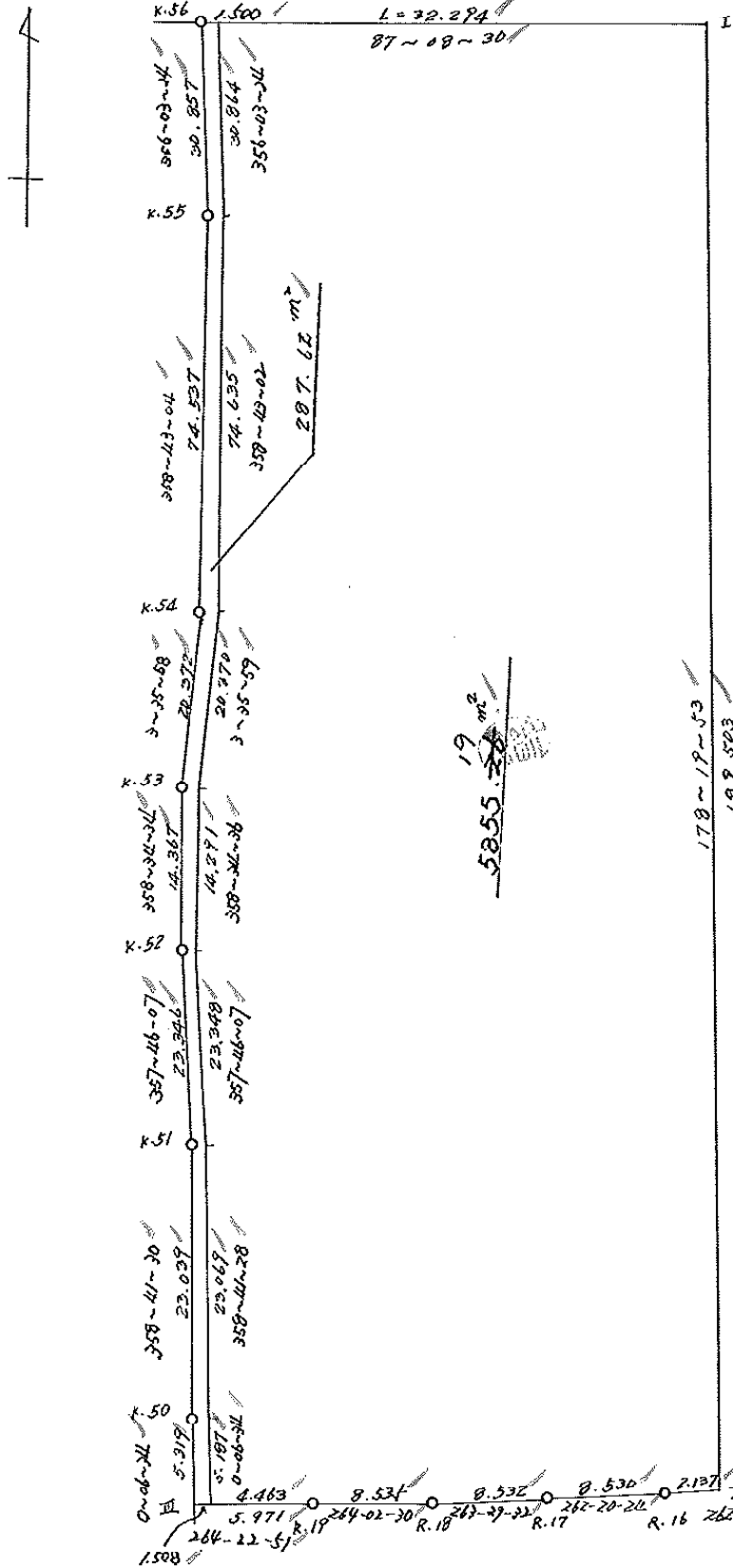


街	区	略	図	工	区	ブ	ロ	ク	65	記	入	者	点	検	者
---	---	---	---	---	---	---	---	---	----	---	---	---	---	---	---



面積計算書

工
区

フ
ロ
ック

65

計
算
者



測
定
者



備
考



点	①	②	③	④	⑤	⑥	③ × ⑤		② × ⑥		
	X	X-(定数)	X _{n-1} -X _{n+1}	Y	Y-(定数)	Y _{n-1} -Y _{n+1}	+	-	+	-	
	-148	-148.750		-40	-49.080						
I	754.341	4.341	+ 187.812	089.442	9.442	27.772		1773.320904	163.968252		
II	943.763	193.763	+ 189.712	083.924	3.924	3.401		744.429888	658.987963		
R16	944.053	194.053	+ 1.427	086.041	6.041	10.571		8.620509		2051.334263	
R17	945.190	195.190	+ 2.104	094.445	14.495	16.931		30.497480		3304.761890	
R18	946.157	196.157	+ 1.853	102.972	22.972	16.966		42.567116		3327.999662	
R19	947.043	197.043	+ 1.471	111.461	31.461	14.431		46.279121		2843.527533	
III	947.628	197.628	- 4.734	117.403	37.403	5.932		177.065802		1172.329296	
K50	942.309	192.309	- 28.352	117.393	37.393	0.516		1060.166336		99.231444	
K51	919.276	169.276	- 46.361	117.919	37.919	1.435		1757.962759		242.911060	
K52	895.948	145.948	- 37.691	118.828	38.828	1.266		1463.466168		184.770168	
K53	891.585	131.585	- 34.695	119.185	39.185	0.922		1359.523575	121.321370		
K54	861.253	111.253	- 94.850	117.906	37.906	0.389		3595.384100		43.277417	
K55	796.735	36.735	- 105.302	119.574	39.574	3.790		4167.221348		139.225650	
K56	755.951	5.951	- 32.394	121.696	41.696	30.132		1350.700224	199.315532		
								16931.490292	2665.715026	1123.593117	13409.368383
								12285.775266			12285.775266
											6142.88 - 287.62 = 5855.26 m ²
											1/2 = 6142.887633

地 地 計 算



点検者



記入者

65

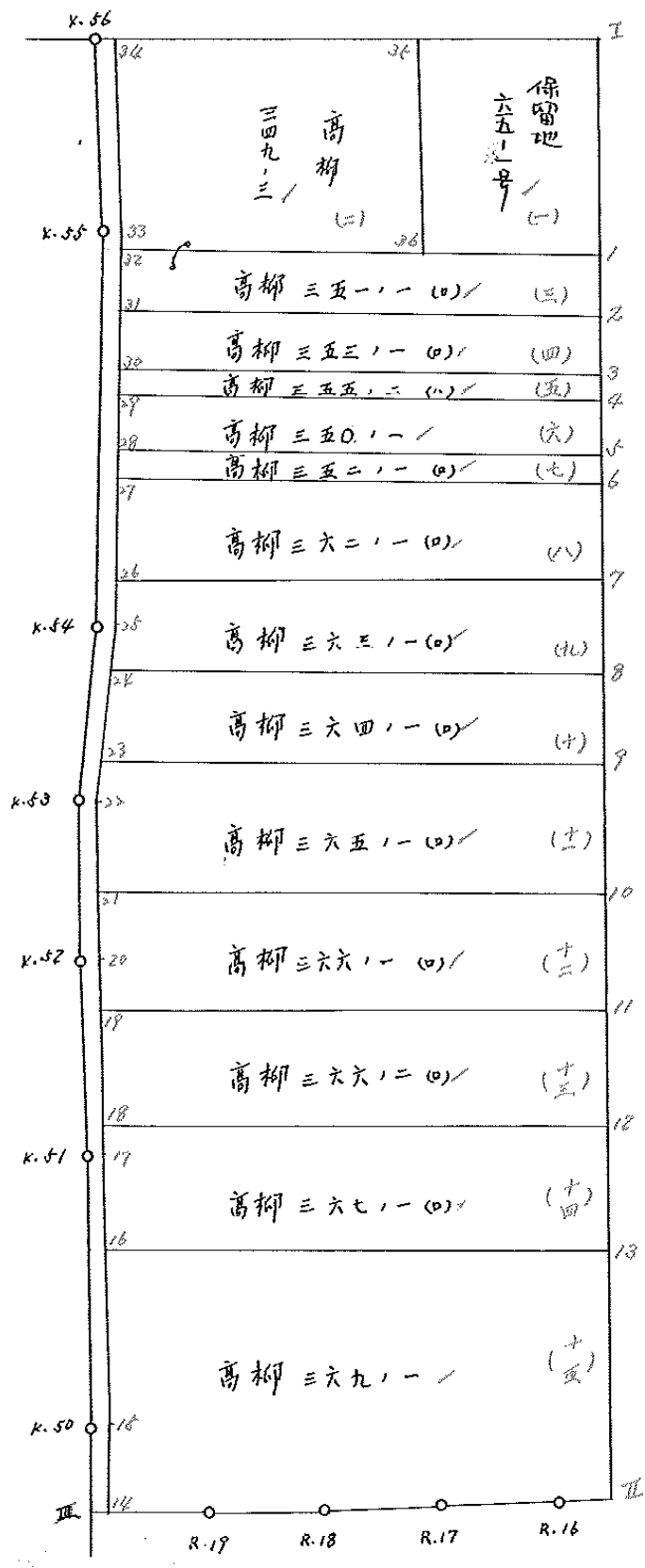
ブロック

工区

略図

地略

画面



略

☒

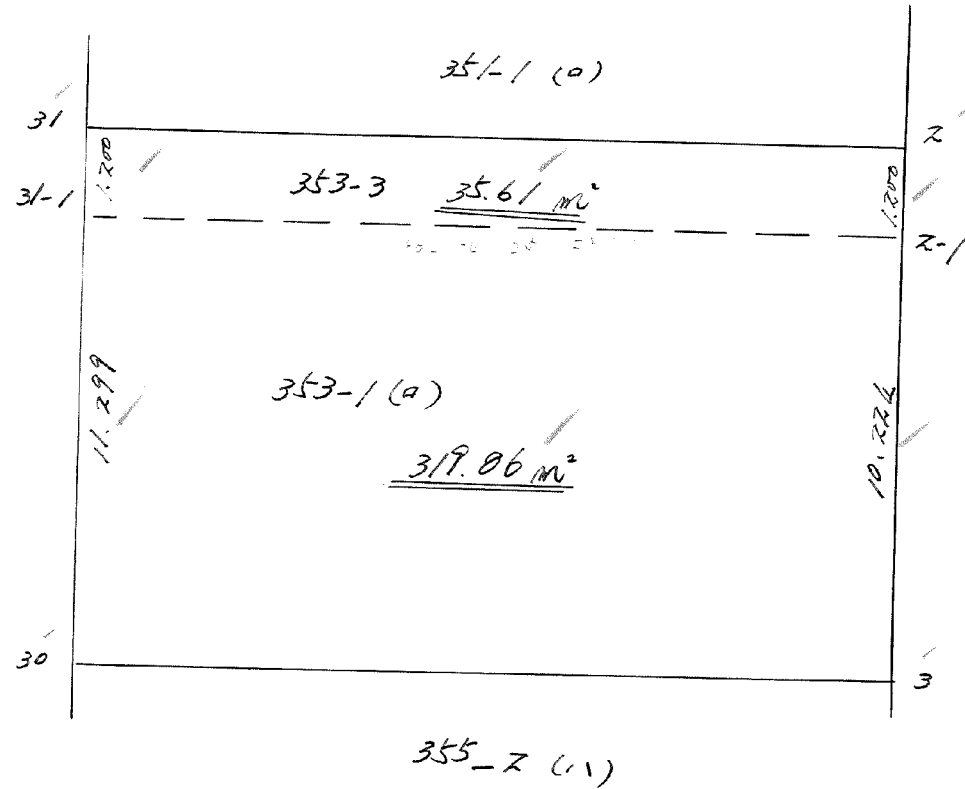
工区

ブロック

65

記入者

点検者



面積計算書

工
区

ブ
ロ
ック

65

計
算
者



精
算
者



備
考

保留地65-1号
苗畑 24903

1.
2.

点	①	②	③	④	⑤	⑥	③	×	⑤	②	×	⑥
	X	X-(定数)	X _{n-1} -X _{n+1}	Y	Y-(定数)	Y _{n-1} -Y _{n+1}	-		-	+		-
工	-148 754.341	-107.750 4.341	+ 33.419	-40 089.442	-110.080 9.442	- 8.972				215,542,198		38,947,452
1	788.159	38.159	+ 34.095	089.447	8.457	+ 7.010				288,341,415		267,294,590
26	788.436	38.436	- 33.419	096.452	16.452	8.972	549,809,388					344,847,792
35	754.740	4.740	- 34.095	097.429	17.429	- 7.010	594,241,755				33,227,400	
							114,405,143	603,883,613		72,174,858	612,342,382	
							540,167,530					540,167,530
										1/2 = 270,083,765		
35	-108 754.740	-107.750 4.740	+ 32.460	-40 097.429	-110.090 7.429	- 23.746				241,828,240		112,556,040
36	788.436	38.436	+ 34.445	096.452	6.452	+ 20.591				222,239,140		791,435,676
37	789.185	39.185	- 1.769	118.020	29.020	+ 21.624	49,567,380					847,326,440
33	786.667	36.667	- 33.329	118.076	29.076	+ 2.178	925,103,484					79,860,726
34	755.876	5.876	- 31.927	120.198	30.198	- 20.647	964,131,546				121,321,772	
							1848,882,410	464,127,380		223,877,812		178,632,842
							1484,755,020					748,475,020
										1/2 = 742,377,515		

面積計算書

工
区

ブ
ロ
ック

65

計
算
者



測
算
者

備
考

高柳 35101 (B)

3.

" 34301 (B)

4.

点	①	②	③	④	⑤	⑥	③ × ⑤		② × ⑥	
	X	X - (定数)	X _{n-1} - X _{n+1}	Y	Y - (定数)	Y _{n-1} - Y _{n+1}	+	-	+	-
	-148	148,780		-40	140,080					
1	788.159'	8.159'	+ 14,528	088.447'	8.447'	- 30,016		122,863,296	244,900,544	
2	803.713'	23,713'	+ 15,342	088.004'	8,004'	+ 29,242		122,797,368		693,415,546
31	803.501'	23,501'	- 14,528	117.699'	37,699'	+ 30,016	547,691,072			705,406,016
32	789.185'	9,185'	- 15,342	118.020'	38,020'	- 29,242	583,802,840		268,587,770	
							1130,993,912	245,660,664	513,488,314	1398,821,562
							885,333,248			885,333,248
										$\frac{1}{2} = 442,666,624 \text{ m}^2$
	-148	140,880		-40	140,080					
2	803.713'	3,713'	+ 11,631	088.004'	8,004'	- 30,028		93,094,524	111,493,964	
3	815.132'	15,132'	+ 12,283	087.671'	7,671'	+ 29,415		94,222,893		445,107,780
30	815.996'	15,996'	- 11,631	117.419'	37,419'	+ 30,028	425,220,389			480,327,888
31	803.501'	3,501'	- 12,283	117.699'	37,699'	- 29,415	463,056,817		102,981,915	
							898,277,206	187,317,417	214,475,879	925,435,668
							710,959,789			710,959,789
										$\frac{1}{2} = 355,479,894.5 \text{ m}^2$

分筆あり

面積計算書

工
区ブ
ロ
ック

65

計
算
者精
算
書備
考

353-3

点	①	②	③	④	⑤	⑥	③ × ⑤		② × ⑥	
	X	X-(定数)	X _{n-1} -X _{n+1}	Y	Y-(定数)	Y _{n-1} -Y _{n+1}	+	-	+	-
2	-128,803.713	-129,800 3.713	+ 1.411	-40,000.004	-40,080 8.004	- 29.730	11.293644	110.307290		
2-1	804.912	4.912	+ 0.900	087.969	7969+	29.668	7.073372		145.729216	
31-1	804.701	4.701	- 1.411	117.672	37.672+	29.730	53.155192		139.760700	
31	803.501	3.501	- 0.900	117.699	37.699-	29.668	37.246612	103.867660		
							90.401004	19.167016	214.255150	285.409946
							71.234700			71.234700
							x'z = 35.617394			
					353-3	353-1 (a)				
				355.27	- 35.61	= 319.06				

面積計算書

工区

ブロック

64

計算者



精算者



備考

高柳 35502 (ハ)
" 35001

4.
6.

点	①	②	③	④	⑤	⑥	③	×	⑤	②	×	⑥	
	X	X-(定数)	X _{n-1} -X _{n+1}	Y	Y-(定数)	Y _{n-1} -Y _{n+1}	+		-	+		-	
	-148	148810		-40	40080								
3	815.132'	-5.132'	+4.160	087.671'	-7.671'	-29.894			31.911360			153.416008	
4	820.156'	-10.156'	+5.893	087.525'	-7.525'	+29.636			44.344825			300.983216	
29	821.025'	-11.025'	-4.160	117.307'	-37.307'	+29.894	155.197120					329.581350	
30	815.996'	-5.996'	-5.893	117.419'	-37.419'	-29.636	220.510167					177.697456	
									375.707287		16.256185	331.113464	630.564566
									299.451102				299.451102
									1/2 = 149.725551'				
	-148	148820		-40	40080								
4	820.156'	-0.156'	+11.018	087.525'	-7.525'	-30.129			82.910450			4.700124	
5	832.043'	-12.043'	+12.755	087.178'	-7.178'	+29.515			91.555390			355.449145	
28	832.711'	-12.911'	-11.018	117.040'	-37.040'	+30.129	408.106720					388.995519	
29	821.025'	-1.025'	-12.755	117.307'	-37.307'	-29.515	475.850785					30.252875	
									883.957505		14.465840	34.952999	744.444664
									709.491665				709.491665
									1/2 = 354.7458325'				

面積計算書

工
区

ブ
ロ
ック

65

計
算
者



積
算
名



備
考

高柳 2420/101
" 3620/101

7.
8.

点	①	②	③	④	⑤	⑥	③ × ⑤	② × ⑥
	X	X-(定数)	X _{n-1} -X _{n+1}	Y	Y-(定数)	Y _{n-1} -Y _{n+1}	+ -	+ -
	-148.148830			-40	40080			
4	832.043	-2.043	+5.689	027.178	-7.178	-30.053	40.835642	61.398279
6	838.600	-8.600	+7.426	026.927	-6.927	+29.716	51.885462	255.557600
27	839.469	-9.469	-5.689	116.294	-36.894	+30.053	209.889966	284.571857
28	832.911	-2.911	-7.426	117.040	-37.040	-29.716	275.059040	86.503276
							484.949006	92.721104
							392.227902	392.227902
							1/2 = 196.113951	
	-148.148830			-40	40080			
6	838.600	-8.600	+15.223	026.927	-6.927	-30.375	106.363101	261.225000
7	854.692	-24.692	+16.964	026.519	-6.519	+29.546	110.588316	729.549832
26	855.564	-25.564	-15.223	116.533	-36.533	+30.375	556.141859	176.506500
27	839.469	-9.469	-16.964	116.294	-36.894	-29.546	625.869816	279.771074
							1182.011675	216.951417
							965.060258	965.060258
							1/2 = 482.530129	

面積計算書

工
区

ブ
ロ
ック

64

計
算
者



監
算
者



備
考

高柳 36371 (E) 9.

" 36471 (D) 10.

点	①	②	③	④	⑤	⑥	③ × ⑤		② × ⑥	
	X	X - (定数)	X _{n-1} - X _{n+1}	Y	Y - (定数)	Y _{n-1} - Y _{n+1}	+	-	+	-
	-148	148850		-40	40080					
7	244.692	-4.692	+11.425	226.419	-6.519	-30.373		74.479575	142.510116	
8	266.989	-16.989	+13.188	226.160	-6.160	+30.301		81.238080		514.783689
24	267.880	-17.880	-5.706	116.220	-36.820	+30.245	210.094920			540.780600
25	261.283	-11.283	-12.316	116.405	-36.405	-0.287	448.363980		3.238221	
26	255.464	-5.564	-6.591	116.433	-36.533	-29.886	240.789003		166.285704	
							899.247903	155.717655	312.034041	1055.564289
							743.530248			743.530248
							1/2 = 371.765124			
	-148	148860		-40	40080					
8	266.989	-6.989	+9.211	226.160	-6.160	-30.954		56.739760	216.337506	
9	277.091	-17.091	+11.012	225.266	-5.866	+31.297		64.596392		534.897027
23	278.001	-18.001	-9.211	117.457	-37.457	+30.954	345.016427			557.202954
24	267.880	-7.880	-11.012	116.220	-36.820	-31.297	405.461840		246.620360	
							750.478267	121.336152	462.957866	1092.099981
							629.142115			629.142115
							1/2 = 314.5710575			

面積計算書

工区: ブロック: 計算者: 備考: 高柳 365 m / (10) 11.
 " 366 m / (10) 12.

点	①	②	③	④	⑤	⑥	③ × ⑤		② × ⑥	
	X	X - (定数)	X _{n-1} - X _{n+1}	Y	Y - (定数)	Y _{n-1} - Y _{n+1}	-	-	+	-
	-148	148870		-40	40080					
9	877.091	7.091	+ 9.689	885.866	5.866	- 31.900		56.835674	226.202900	
10	887.690	17.690	+ 11.525	885.557	5.557	+ 31.644		64.044425		559.782360
21	888.616	18.616	- 6.077	117.510	37.510	+ 32.127	227.948270			598.076232
27	881.613	11.613	- 10.615	117.694	37.694	- 0.053	400.015660		0.615489	
23	878.001	8.001	- 4.522	117.457	37.457	- 31.818	169.580554		254.575818	
							797.344484	120.880099	481.394207	1157.858592
							676.464385			676.464385
									$\frac{1}{2} = 339.2321925 \text{ m}^2$	
	-148	148880		-40	40080					
10	887.690	7.690	+ 9.971	885.557	5.557	- 32.270		55.408847	248.156300	
11	898.537	18.537	+ 11.831	885.240	5.240	+ 31.631		61.994440		587.925397
19	899.521	19.521	- 2.687	117.188	37.188	+ 32.089	99.924156			626.409369
20	895.900	15.900	- 10.905	117.329	37.329	+ 0.322	407.072745			5.119800
21	888.616	8.616	- 8.210	117.510	37.510	- 31.772	307.957100		273.747552	
							814.954001	117.403287	521.903852	1219.454566
							697.550714			697.550714
									$\frac{1}{2} = 318.775357 \text{ m}^2$	

面積計算書

工区

ブロック

65

計算者



計算者



備考

高柳 36692 (2) 13.
" 36701 (9) 14.

点	①	②	③	④	⑤	⑥	③ × ⑤		② × ⑥	
	X	X - (定数)	X _{n-1} - X _{n+1}	Y	Y - (定数)	Y _{n-1} - Y _{n+1}	-	-	+	-
	-148	148.890		-40	40.080					
11	898.487	8.587	+9.366	084.240	5.240	-32.248		49.077840	206.913576	
12	908.887	19.887	+11.232	084.940	4.940	+31.547		55.486080		595.828189
18	909.819	19.819	-9.366	116.787	36.787	+32.248	344.547042			639.123112
19	899.421	9.521	-11.232	117.188	37.188	-31.547	417.695616		300.358987	
							162.242658	104.563920	577.272563	1234.951301
							657.678738			657.678738
									$\frac{1}{2} = 328.839367$	
	-148	148.900		-40	40.080					
17	907.887	8.887	+11.144	084.940	4.940	-32.199		55.051360	286.152513	
13	920.963	20.963	+13.001	084.588	4.588	+31.419		59.648588		658.636497
16	921.888	21.888	-1.733	116.359	36.359	+31.832	63.010149			696.738816
17	919.230	19.230	-12.069	116.420	36.420	+0.428	439.552980			8.230440
18	909.819	9.819	-10.343	116.787	36.787	-31.480	380.487941		309.102120	
							883.051068	114.699948	595.254633	1363.605753
							768.351120			768.351120
									$\frac{1}{2} = 384.175560$	

面積計算書

工区

ブロック

65

計算者

精算者

備考

高柳 36701

14

点	①	②	③	④	⑤	⑥	③ × ⑤	② × ⑥
	X	X - (定数)	X _{n-1} - X _{n+1}	Y	Y - (定数)	Y _{n-1} - Y _{n+1}	+ -	+ -
	-148	148.920		-40	40.080			
13	920.963	0.963	+21.875	084.588	4.588	-32.435	100.362500	31.234905
Ⅱ	943.763	23.763	+23.090	083.924	3.924	+1.453	90.605160	34.527639
R.16	944.053	24.053	+1.427	086.041	6.041	+10.571	8.620507	254.264263
R.17	945.190	25.190	+2.104	094.495	14.495	+16.931	30.497480	426.491890
R.18	946.157	26.157	+1.853	102.972	22.972	+16.966	42.567116	443.779662
R.19	947.043	27.043	+1.323	111.461	31.461	+12.931	44.622993	349.693039
14	947.480	27.480	-4.750	115.903	35.903	+4.432	170.539250	121.791310
15	947.293	22.293	-25.592	115.893	35.893	+0.456	918.573656	10.165608
16	941.888	1.888	-21.330	116.349	36.359	-31.305	775.537470	59.103840
							1864.650376	344.275666
							90.338745	1640.713455
							1550.374710	1550.374710
							1/2 = 775.187355	

面積計算書

工
区

フ
ロ
ック

65

計
算
者





測
算
者

備
考

小
提

点	①	②	③	④	⑤	⑥	③ × ⑤		② × ⑥	
	X	X - (定数)	X _{n-1} - X _{n+1}	Y	Y - (定数)	Y _{n-1} - Y _{n+1}	+	-	+	-
	-148.	-148.750		-40.	-40.110					
24	755.876	5.876	+ 30.716	120.198	10.198	- 3.620		313.241768	21.271120	
23	786.667	36.667	+ 105.407	118.076	8.076	- 3.793		851.266932	139.077931	
25	861.283	111.283	+ 94.946	116.405	6.405	- 0.392		608.129130	43.622936	
22	891.613	131.613	+ 34.617	117.684	7.684	+ 0.924		265.997028		121.610412
20	895.900	145.900	+ 37.617	117.329	7.329	- 1.264		275.694993	184.417600	
17	919.230	169.230	+ 46.393	116.420	6.420	- 1.436		297.843060	243.014280	
15	942.293	192.293	+ 28.250	115.893	5.893	- 0.517		166.477250	99.415481	
14	947.480	197.480	+ 5.325	115.903	5.903	+ 1.510		31.692505		298.194800
III	947.628	197.628	- 5.171	117.403	7.403	+ 1.490	38.280913			284.665720
K50	942.309	192.309	- 28.352	117.393	7.393	+ 0.516	209.606336			99.231666
K51	919.276	169.276	- 46.361	117.919	7.919	+ 1.435	367.132769			242.911060
K52	895.948	145.948	- 37.691	118.828	8.828	+ 1.266	332.936148			184.770168
K53	891.585	131.585	- 34.695	119.185	9.185	- 0.922	318.673573		121.321370	
K54	861.253	111.253	- 94.850	117.906	7.906	+ 0.389	749.884100			43.277417
K55	786.735	36.735	- 105.302	119.574	9.574	+ 3.790	1008.161348			139.225650
K56	755.951	5.951	- 30.859	121.696	11.696	+ 0.624	360.926864			3.713424

3385.402043 2810.142666 852.140718 1427.400085
 575.259377 575.259377
 $\frac{1}{2} = 287.6296885$

計年 月 算日	計 算 者 	檢 查 者 
---------------	--	--

B. NO. 65

各筆面積計算書

地番	算式	隅切	地積	摘要
1	保留地 65-1号		270.08	
2	高柳 349-2		742.37	
3	" 351-1 (甲)		442.66	
4	" 353-1 (甲)		255.47	
5	" 355-2 (乙)		149.72	
6	" 350-1		354.74	
7	" 352-1 (甲)		196.11	
8	" 362-1 (甲)		482.53	
9	" 363-1 (甲)		271.76	
10	" 364-1 (甲)		214.57	
11	" 365-1 (甲)		228.23	
12	" 366-1 (甲)		248.77	
13	" 366-2 (甲)		228.83	
14	" 367-1 (甲)		284.17	
15	" 369-1		775.18	
		合計	5855.19	
		全面積	5855.26	
			- 0.07	
	空地面積		5585.11	14筆
	保留地面積		270.08	1筆
	小堤面積		287.62	水路敷