

街区略図

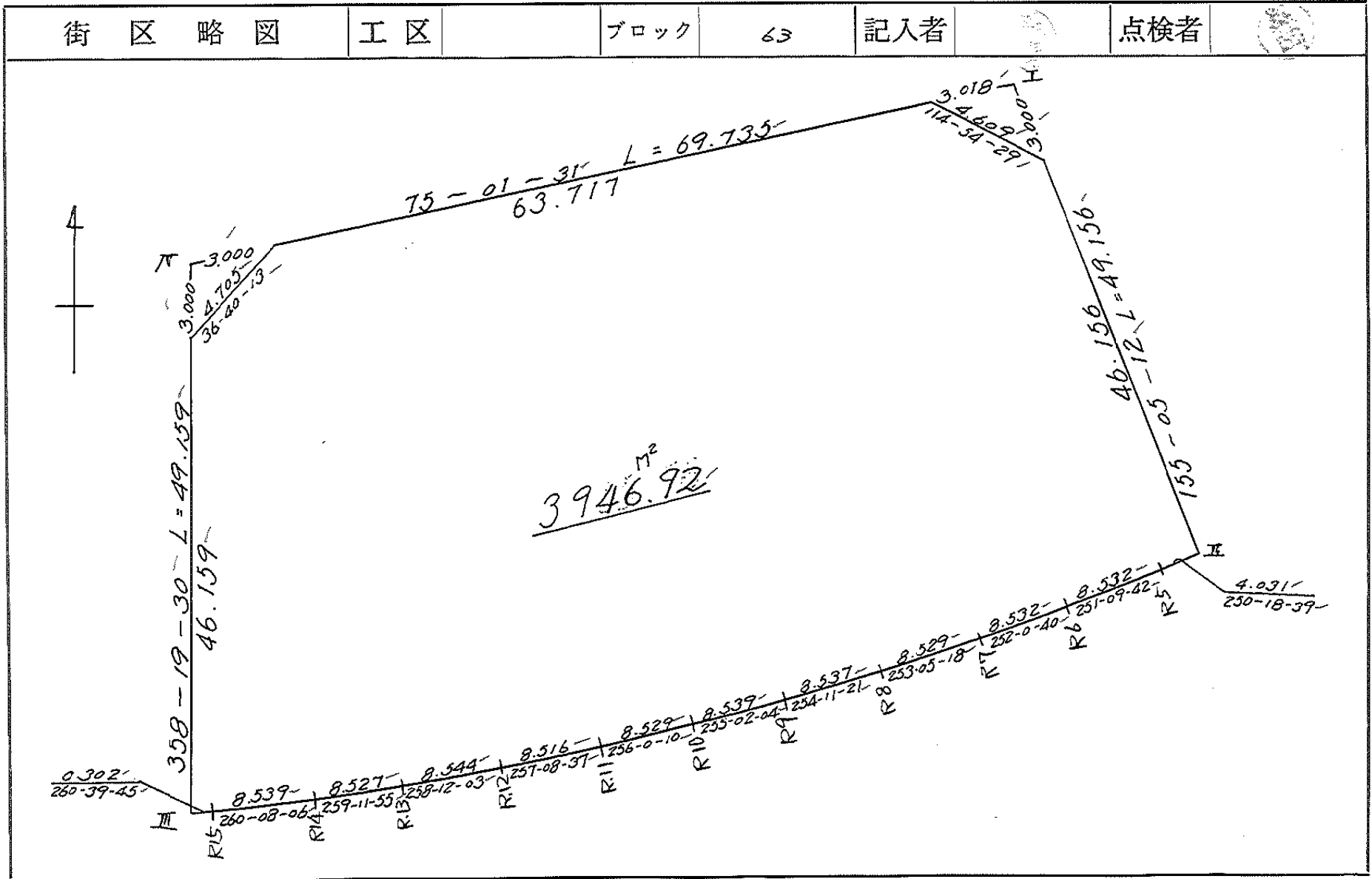
工区

ブロック

63

記入者

点検者



面積計算書

工
区

ブ
ロ
ック

63

計
算
者



結
算
者



備
考

全体面積

点	①	②	③	④	⑤	⑥	③ × ⑤		② × ⑥	
	X	X - (定数)	X _{n-1} - X _{n+1}	Y	Y - (定数)	Y _{n-1} - Y _{n+1}	+	-	+	-
I	875.619	75.619	+ 26.563	011.987	111.987	- 88.074			2,774,710,681	6,660,067,806
II	920.201	120.201	+ 45.940	991.280	91.280	- 16.912			4,193,403,200	2,032,839,312
R 5	921.559	121.559	+ 4.113	995.075	95.075	+ 11.870			391,043,475	1,442,905,330
R 6	924.314	124.314	+ 5.390	103.150	103.150	+ 16.190			555,978,500	2,012,643,660
R 7	926.949	126.949	+ 5.116	011.265	111.265	+ 16.275			669,231,740	2,066,094,975
R 8	929.430	129.430	+ 4.807	019.425	119.425	+ 16.374			574,075,975	2,119,286,820
R 9	931.756	131.756	+ 4.531	027.639	127.639	+ 16.463			578,332,309	2,169,099,028
R 10	933.961	133.961	+ 4.268	035.888	135.888	+ 16.525			579,969,984	2,213,705,525
R 11	936.024	136.024	+ 3.958	044.164	144.164	+ 16.579			570,601,112	2,255,141,896
R 12	937.919	137.919	+ 3.642	052.467	152.467	+ 16.666			555,284,814	2,298,558,064
R 13	939.666	139.666	+ 3.345	060.830	160.830	+ 16.739			537,976,350	2,337,869,174
R 14	941.264	141.264	+ 3.061	069.206	169.206	+ 16.789			517,939,566	2,371,681,296
R 15	942.727	142.727	+ 1.512	077.619	177.619	+ 8.711			269,559,928	1,243,294,897
III	942.776	142.776	- 49.089	077.917	177.917	+ 1.735			8,733,267,613	247,716,360
IV	893.638	93.638	- 67.157	079.354	179.354	- 65.930			12,044,876,578	6,173,553,340
									20,778,644,191	12,867,107,634
									14,866,460,458	22,777,997,015
									7,911,536,557	7,911,536,557

$$\dot{x} = 3,955.76 - \frac{(4.46 + 4.38)}{0.84^2} = 3,946.92$$

$$y_2 = 3,955.768278$$

三和測量建設株式会社

画地計算

画地略図

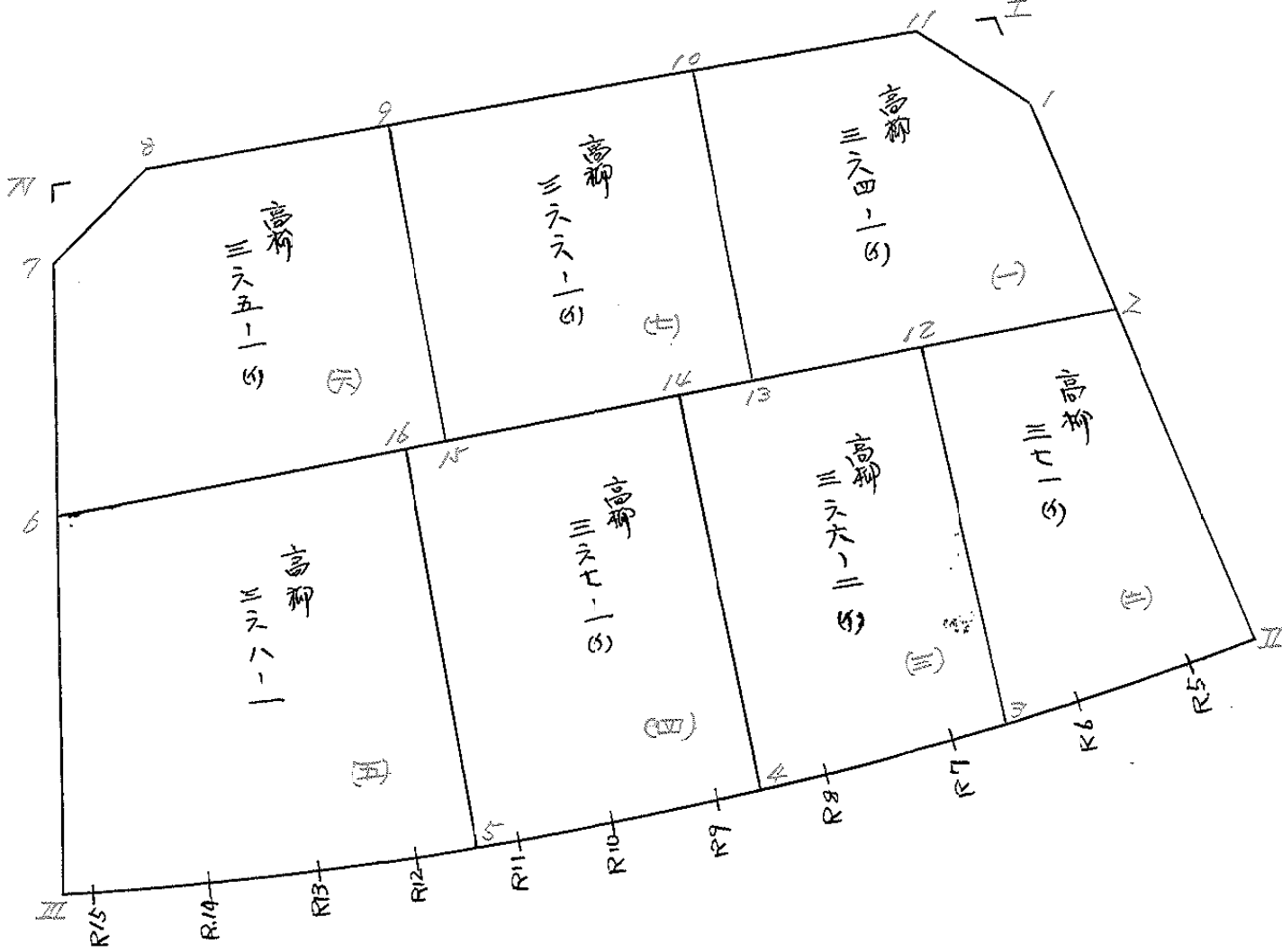
工区

ブロック

63

記入者

点検者



面積計算書						工区	ブロック	63	計算者	精算者	備考	高柳 3640/6) (1)	(1)
												" 3660/6) (7)	(7)
点	①	②	③	④	⑤	⑥	③	×	⑤	②	×	⑥	
	X	X-(定数)	X _{n-1} -X _{n+1}	Y	Y-(定数)	Y _{n-1} -Y _{n+1}	+		-	+		-	
	-148,	142,870		-40,	40,000								
1.	878.340	8.340	+ 18,827	010.723	10.723	- 12,023				201,881,921		100,271,820	
2.	875.226	25.226	+ 23,478	022.890	2,880	+ 16,823				67,616,640		424,376,998	
12.	901.818	31.818	- 13,982	027.546	27,546	+ 30,137	385,148,172					958,899,066	
10.	881.244	11.244	- 25,419	033.017	33,017	- 12,643	839,259,123			142,157,892			
11.	876.399	6.399	- 2,904	014.903	14,903	- 22,294	43,278,312			142,659,306			
							1267,625,607	269,498,561	385,089,018	1383,276,064			
							998,187,046			998,187,046			
										$\frac{1}{2} = 499,093,523 \text{ m}^2$			
	-148,	142,880		-40,	40,020								
10.	881.244	1.244	+ 13,968	033.017	13,017	- 30,170				181,821,656		37,531,480	
13.	901.818	21.818	+ 27,172	027.546	7,546	+ 19,220				205,039,912		419,341,960	
15.	908.416	28,416	- 13,968	022.237	32,237	+ 30,170	450,286,416					857,310,720	
9.	887.850	7.850	- 27,172	027.716	37,716	- 19,220	1024,819,152			150,877,000			
							1475,105,568	386,861,368	188,408,480	1276,652,680			
							1088,244,200			1088,244,200			
										$\frac{1}{2} = 544,122,100 \text{ m}^2$			

面積計算書

工区: フロック: 計算者: 発注者: 備考: 高柳 371 41 (2)

63

点	①	②	③	④	⑤	⑥	③	×	⑤	②	×	⑥	
	X	X - (定数)	X _{n-1} - X _{n+1}	Y	Y - (定数)	Y _{n-1} - Y _{n+1}	+		-	+		-	
	-148,	-148,890.		-40,	-39,990.								
7c	295.226,	5.226,	+ 21.549,	502.880,	12.880,	- 24.418,				277.551120,	127.608468,		
II	920.201,	30.201,	+ 21.333,	991.280,	1280,	- 7.805,				33.706240,	235.718805,		
R 5c	921.559,	31.559,	+ 4.113,	995.075,	5.075,	+ 11.870,				20.873475,		374.605330,	
R 6c	924.314,	34.314,	+ 4.471,	1003.150,	13.150,	+ 13.359,				58.793650,		458.400726,	
3c	926.030,	36.030,	- 25.662,	1008.434,	18.434,	+ 12.548,				473.053308,		452.104440,	
17c	898.652,	2.652,	- 32.204,	915.698,	25.698,	- 5.554,				791.601192,		48.053208,	
										1244.654500,	390.924485,	411.320021,	1225.110496,
										873.730015,		873.830015,	
													7/2 = 436.8650075,

面積計算書

工区

ブロック

63

計算者



精算者

備考

高柳 3660261

(3)

点	①	②	③	④	⑤	⑥	③ × ⑤		② × ⑥	
	X	X - (定数)	X _{n-1} - X _{n+1}	Y	Y - (定数)	Y _{n-1} - Y _{n+1}	+	-	+	-
	-148,	148,890		-40,	40,000					
12	298.657	8,652	+ 22,830	215.678	15,698	- 24,285			358,385,340	210,113,820
3	296.030	36,030	+ 28,297	208.434	8,434	- 4,433			238,656,898	159,720,990
R7	296.947	36,949	+ 3,400	211.265	11,265	+ 10,991			38,301,000	406,106,459
R8	299.430	39,430	+ 4,139	219.425	19,425	+ 14,016			80,400,075	552,650,880
4	291.088	41,088	- 26,230	225.281	25,281	+ 13,294	663,120,630			546,223,872
14	203.200	13,200	- 32,436	232.719	32,719	- 9,583	1061,273,484		126,495,600	
							1724,394,114	715,743,313	496,330,410	1504,981,211
							1008,650,801			1008,650,801
										1/2 = 504,325,400.5 m ²

面積計算書

工区

ブロック

63

計算者



計算者



備考

高柳 36701 6)

(4)

点	①	②	③	④	⑤	⑥	③ × ⑤		② × ⑥	
	X	X - (定数)	X _{n-1} - X _{n+1}	Y	Y - (定数)	Y _{n-1} - Y _{n+1}	+	-	+	-
	-148.	148,900		-40.	40,020					
14	903.200	3.200 -	+ 22.281 -	032.719	12.719 -	- 28.420 -			283.392039	90.944000 -
4	931.088	31.088 -	+ 28.556 -	025.281	5.281 -	- 5.080 -			150.804236	157.927040 -
R 9	931.756	31.756 -	+ 2.873 -	027.639	7.639 -	+ 10.607 -			21.946847 -	336.835892
R 10	933.961	33.961 -	+ 4.268 -	026.228	15.228 -	+ 16.525 -			67.809984 -	561.205525
R 11	936.024	36.024 -	+ 2.554 -	044.164	24.164 -	+ 10.427 -			61.714856 -	375.622248
5	936.415	36.515 -	- 27.217 -	046.315	26.315 -	+ 9.537 -	716.215355			348.243555
16	908.807	8.807 -	- 33.315 -	053.701	33.701 -	- 13.596 -	1122.748815		119.739972	
							1838.964170	585.667962	368.611012	1621907220
							1253296208			1253296208
										1/2 = 626648104 m ²

面積計算書

工区

ブロック

63

計算者



精算者



備考

高柳 368の1

(5)

点	①	②	③	④	⑤	⑥	⑦	⑧	⑨	
	X	X-(定数)	X _{n-1} -X _{n+1}	Y	Y-(定数)	Y _{n-1} -Y _{n+1}	+	-	+	-
16	^{-148.} 908.807	^{148.900} 8.807	+ 21.023	^{-40.} 043.701	^{40.040} 13.701	- 32.400			288.026123	285.341800
5	936.515	36.515	+ 29.112	046.315	6.315	- 12.344			183.842280	45.059510
R 12	937.919	37.919	+ 3.151	052.467	12.467	+ 14.515			39.283517	550.394285
R 13	939.666	39.666	+ 3.325	060.230	20.830	+ 16.739			69.676350	663.969174
R 14	941.264	41.264	+ 3.061	069.206	29.206	+ 16.789			89.399526	692.781296
R 15	942.727	42.727	+ 1.512	077.619	37.619	+ 8.711			56.879928	372.194897
Ⅲ	942.776	42.776	- 27.235	077.917	37.917	+ 1.096	1032.669495			46.882496
6	915.492	15.492	- 33.969	078.715	38.715	- 24.216	1315.109835		375.154272	21251.512
							2347.779230		727.117764	705.560582
									2326.222448	727.222448
							1620.661566			1620.661566
										1/2 = 810.330783 m ²

面積計算書

工区

ブロック

63

計算者

精算者

図章

備考

陽印 I.
陽印 II.

点	①	②	③	④	⑤	⑥	⑦	⑧	⑨	⑩
	X	X-(定数)	X _{n-1} -X _{n+1}	Y	Y-(定数)	Y _{n-1} -Y _{n+1}	+	-	+	-
I	-148. 875.619	148870. 5.619	+ 1.941	-40. 011.727	40010 1.987	- 4.180			3,856,767	23,487,420
I	878.340	8.340	+ 0.780	010.723	0.723	+ 2.916			0,563,940	24,319,440
II	876.399	6,399	- 2.721	014.903	4.903	+ 1.264	13,341,063			8,088,336
							13,341,063	4,420,707	23,487,420	32,407,776
							8,920,356			8,920,356
								1/2 = 4,460,178		
								= 4.46 m ²		
IV	-148. 893.638	148890 3.638	- 3.774	-40. 077.354	40070 9.354	- 2,810	35,301,996			10,222,780
8	892.263	2,263	+ 2,999	076.456	6,456	- 0.088		19,361,544	0.251,944	
7	896.637	6,637	+ 0.775	077.266	9.266	+ 2,898		7,181,150		19,234,026
							35,301,996	26,542,694	10,474,724	19,234,026
							8,759,302			8,759,302
								1/2 = 4,379,651		
								= 4.38 m ²		

計年月
算日

計算者



検査者



B. NO. 63

各筆面積計算書

地番	算式	隅切	地積	摘要
1	高柳 364-1 ㌿		499.09	
2	高柳 371 ㌿		436.86	
3	高柳 366-2 ㌿		504.32	
4	高柳 367-1 ㌿		626.64	
5	高柳 368-1 ㌿		810.33	
6	高柳 365-1 ㌿		525.56	
7	高柳 366-1 ㌿		564.12	
		合計(全体)	3,946.92	
		全体	3,946.92	
		差	0.00	
	宅地面積		3,946.92	7筆