

画地計算

画地略図

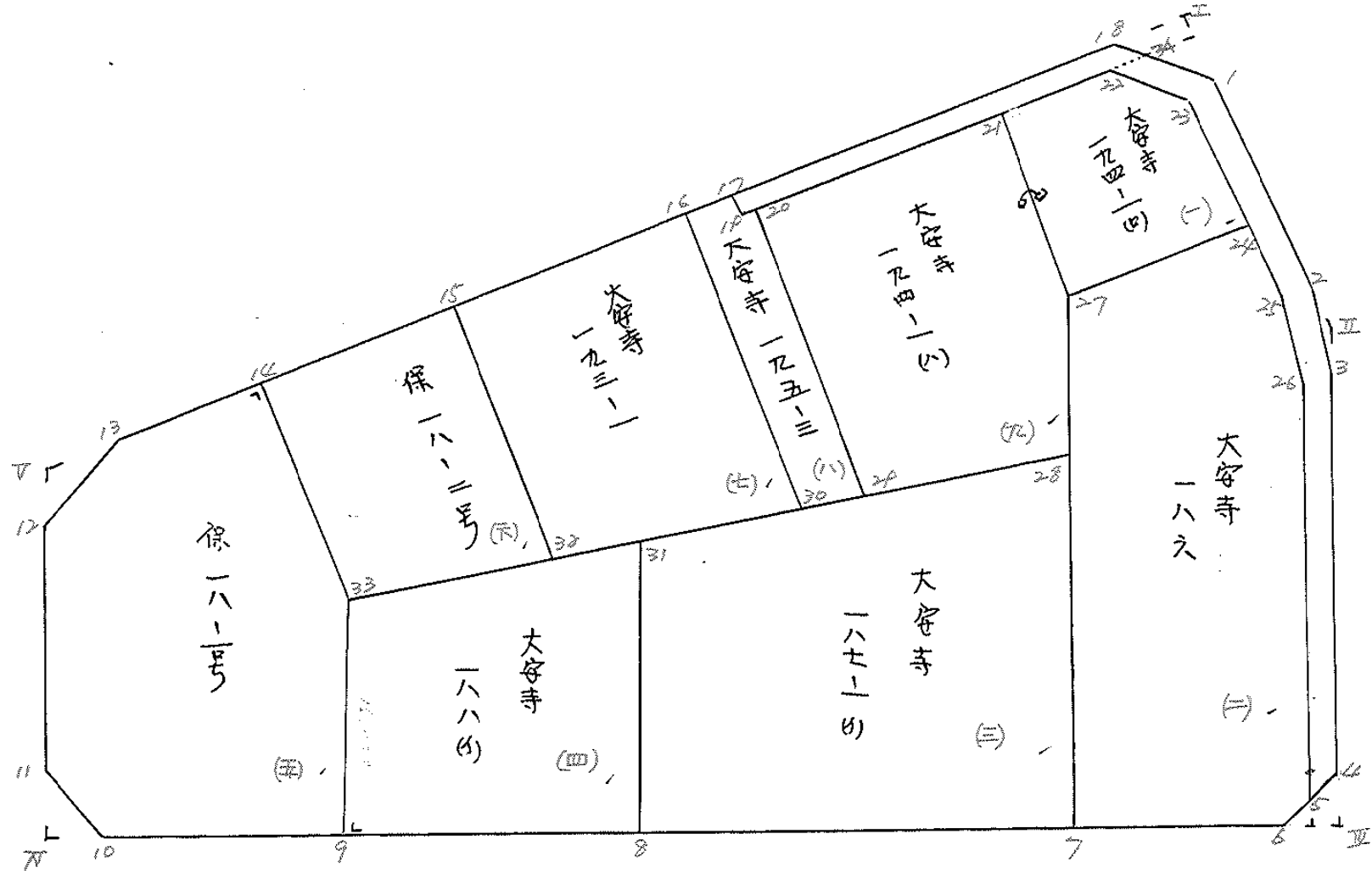
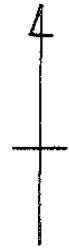
工区

ブロック

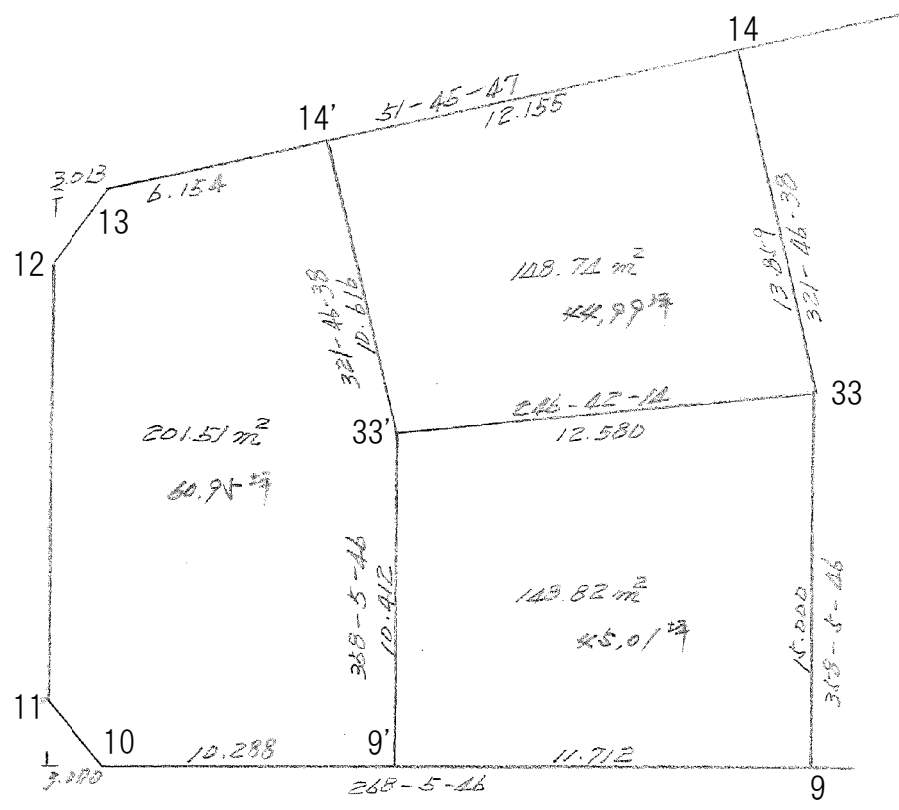
18

記入者

点検者



187° 07'



面積計算書

工
区

ブ
ロ
ック

18

計
算
者



精
算
者



備
考

大塚 194-1(0) (-)
大塚 194-1(1) (2)

点	①	②	③	④	⑤	⑥	③ × ⑤		② × ⑥	
	X	X-(定数)	X _{n-1} -X _{n+1}	Y	Y-(定数)	Y _{n-1} -Y _{n+1}	+	-	+	-
	-148	-148,370		-40	-40,140					
21	387.552	17.552	-23.331	168.344	28.344	-5.320	661.293864		99.376640	
22	376.030	6.030	-11.125	153.741	13.741	-17.836	152.868625		107.551080	
23	376.427	6.427	+10.573	150.508	10.508	-10.860		111.101084	69.797220	
24	386.603	16.603	+22.934	142.821	2.821	+8.553		66.072854		142.005459
27	399.361	29.361	+0.949	159.061	19.061	+25.463		12.028889		747.619143
							214.162489	175.262827	270.724760	889.624602
							618.879662			618.879662
										$\frac{1}{2} = 309.449831$
	-148	-148,380		-40	-40,150					
20	408.384	22.384	-32.513	187.141	27.141	-4.847	1207.565373		108.495248	
21	387.552	7.552	-3.023	168.344	18.344	-28.080	55.453912		212.060160	
27	399.361	19.361	+26.180	159.061	9.061	-9.744		237.216980	188.653524	
28	413.732	33.732	+20.704	152.600	8.600	+14.130		170.054400		476.633160
29	420.065	40.065	-11.348	173.191	23.191	+28.541	263.171468			1143.495165
							1526.190713	445.271380	599.209992	1620.128325
							1110.919333			1110.919333
										$\frac{1}{2} = 555.4596665$

面積計算書

工
区

ブ
ロ
ック

18

計算者



計算者



備考

大電 186 (=)
大電 187-1(1) (≡)

点	①	②	③	④	⑤	⑥	③ × ⑤		② × ⑥	
	X	X-(定数)	X _{n-1} -X _{n+1}	Y	Y-(定数)	Y _{n-1} -Y _{n+1}	+	-	+	-
24	⁻¹⁴⁸ 386.603	^{128.380} 6.603	-4.499	⁻⁴⁰ 147.881	^{20.130} 12.881	-22.370	57.951619		147.909110	
25	394.862	14.862	+13.101	136.671	6.691	-7.863		87.658791	116.859906	
26	399.704	19.704	+52.533	135.018	5.018	-3.031		263.610594	59.722824	
5	447.395	67.395	+48.724	133.660	3.660	-0.387		178.329840	26.081865	
6	448.428	68.428	+1.992	134.631	4.631	+23.802		8.298752		1628.723256
7	449.187	19.187	+49.067	157.462	27.462	+24.430	1347.477954			1490.238410
27	399.361	19.361	-62.584	159.061	29.061	-14.531	1818.753624		282.302741	
							3224.183197	537.897977	632.676446	3318.961666
							2686.285220			2686.285220
							$V_2 = 1343.14261$			
28	⁻¹⁴⁸ 413.732	^{128.210} 3.732	+21.841	⁻⁴⁰ 158.600	^{20.150} 8.600	-32.503		187.832600	121.301196	
7	449.187	39.187	+36.511	157.462	7.462	+30.630		272.445092		1200.297810
8	450.243	40.243	-21.841	189.230	39.230	+32.503	856.822430			1308.018229
31	427.346	19.346	+36.511	189.965	39.965	-30.630	1459.162115		531.307980	
							2215.984545	460.277682	652.609176	2508.316039
							1855.706863			1855.706863

面積計算書

工区

ブロック

18

計測者

計測者

備考

大塚 188 (1)

(四)

保 18-1号

(五)

点	①	②	③	④	⑤	⑥	③ × ⑤	② × ⑥
	X	X - (定数)	X _{n-1} - X _{n+1}	Y	Y - (定数)	Y _{n-1} - Y _{n+1}	+	-
	-148	148.420		-40	40.180			
31	427.346	7.346	+14.328	189.965	9.965	-20.477	142.998.520	150.424.042
8	450.243	30.243	+23.561	189.230	9.230	+19.244	219.468.030	581.996.392
9	450.907	30.907	-14.328	209.209	29.209	+20.477	418.506.552	632.882.639
33	435.915	15.915	-23.561	209.707	29.707	-19.244	699.926.627	306.268.260
							1118.433.179	360.246.550
							758.186.629	456.692.302
								1214.828.931
								758.186.629
								$\frac{1}{2} = 379.093.315$
	-148	148.420		-40	40.200			
9	450.907	30.907	+15.723	209.209	9.209	+21.490	144.793.109	664.191.430
10	451.638	31.638	-2.181	231.197	31.197	+25.192	68.040.657	796.391.736
11	448.726	28.726	-10.420	234.381	34.381	+3.648	358.250.020	104.792.448
12	441.218	21.218	-12.367	234.845	34.845	-1.918	430.928.115	36.452.524
13	436.359	16.359	-16.191	232.663	32.663	+4.563	528.846.633	270.954.117
14	425.027	5.027	-0.444	218.282	18.282	-22.956	8.417.208	115.399.812
33	435.915	15.915	+25.880	209.707	9.707	-9.073	251.219.160	144.396.725
							1394.182.633	396.010.269
								547.203.249
								1565.395.614
							998.172.366	998.172.366

$\frac{1}{2} = 499.086.782$ 株式会社

面積計算書

工
区

ブ
ロ
ック

18

計
算
者



測
算
者

備
考

上、下

点	①	②	③	④	⑤	⑥	③ × ⑤		② × ⑥	
	X	X-(定数)	Xn-1-Xn+1	Y	Y-(定数)	Yn-1-Yn+1	+	-	+	-
14'	-118,032.550	-118,032.550 12,550	-15.863	-10,227.827	-10,200 27,827	-2,979	441,451,427		37,386,450	
14	425,027	5,027	+3.365	218,282	18,282	-18.122		61,518,930	91,099,294	
33	435,915	15,915	+15.863	209,707	9,707	+2,979		153,982,141		47,410,785
33'	440,890	20,890	-3.365	221,261	21,261	+18.122	71,513,265			378,568,580
							512,994,692	215,501,071	178,085,744	125,979,365
							297,493,621			297,493,621
								$\frac{1}{2} = 118,716,810.5$		
33'	440,890	-118,032.550 10,890	-15.381	221,261	-10,300 21,261	-11,208	327,015,441		122,055,120	
33	435,915	5,915	+10.017	209,707	9,707	-12,052		97,235,019	71,287,580	
9	450,707	20,707	+15.381	209,209	9,209	+11,208		141,613,629		236,325,656
9'	451,296	21,296	-10.017	220,915	20,915	+12,052	209,505,565			256,659,392
							536,520,996	238,878,648	193,342,700	190,985,048
							297,642,348			297,642,348
								$\frac{1}{2} = 118,821,174$		

面積計算書

工
区

ブ
ロ
ック

18

計
算
者

積
算
者



備
考

保18-2号 (六)

大塚193-1 (七)

点	①	②	③	④	⑤	⑥	③ × ⑤		② × ⑥	
	X	X-(定数)	X _{n-1} -X _{n+1}	Y	Y-(定数)	Y _{n-1} -Y _{n+1}	+	-	+	-
15	⁻¹⁴⁸ 413.511	^{-148.410} 3.511 + 3.237		⁻⁴⁰ 203.667	^{-40.170} 13.667 - 26.207					
32	428.264	18.264 + 22.404		192.080	2.080 + 6.040					
33	435.915	25.915 - 3.237		209.707	19.707 + 26.202		63.791559			
14	425.027	15.027 - 22.404		218.282	28.282 - 6.040		633.629728			
							677.421487	90.840399	182.758302	787.337310
							606.581088			606.581088
							1/2 = 303.290544			
16	⁻¹⁴⁸ 403.649	^{-148.400} 3.649 + 8.184		⁻⁴⁰ 191.151	^{-40.170} 21.151 - 26.720					
30	421.695	21.695 + 24.615		176.947	6.947 + 0.929					
32	428.264	28.264 - 8.184		192.080	22.080 + 26.720		180.702720			
15	413.511	13.511 - 24.615		203.667	33.667 - 0.929		822.713205			
							1009.445925	306.100189	110.052999	775.368735
							665.315736			665.315736
							1/2 = 332.657868			

面積計算書

工
区

ブ
ロ
ック

18

計
算
者

計
算
者

備
考

大塚 195-3 (11)

項	①	②	③	④	⑤	⑥	③ × ⑤		② × ⑥		
	X	X - (定数)	X _{n-1} - X _{n+1}	Y	Y - (定数)	Y _{n-1} - Y _{n+1}	+	-	+	-	
16	⁻¹⁴⁸ 403.649	^{748.380} 23.649	-20.306	⁻⁴⁰ 191.151	^{-40.140} 51.151	+ 11.336	1038.672206			268.095064	
17	401.389	21.389	- 1.092	189.283	48.283	- 3.790	52.725036			81.064310	
19	402.557	22.557	+ 0.995	187.361	47.361	- 1.142		47.124195		25.760094	
20	402.384	22.384	+ 17.508	187.141	47.141	- 14.170		825.344628		317.121280	
29	420.065	40.065	+ 19.311	173.191	33.191	- 10.194		640.951401		408.422610	
30	421.695	41.695	- 16.416	176.947	36.947	+ 17.760		606.521952		748.842200	
								167.919194	1513.426224	232,428294	1016.727264
								184.498970			184.498970
											$\frac{1}{2} = 90,249,485$

面積計算書

Ⅰ
区

ブ
ロ
ック

18

計
算
者

計
算
者

備
考

Ⅰ
Ⅱ

点	①	②	③	④	⑤	⑥	③ × ⑤		② × ⑥	
	X	X - (定数)	X _{n-1} - X _{n+1}	Y	Y - (定数)	Y _{n-1} - Y _{n+1}	+	-	+	-
	-148	-148,372.000		-40	-40,149.000					
Ⅰ	372.169	0.169	+0.544	151.201	2.201	-4.155		1.197344	0.702195	
1	374.570	2.570	+1.857	149.402	0.402	+2.356		0.746514		6.054920
18	374.026	2.026	-2.401	153.557	4.557	+1.799	10.941357			3.644774
							10.941357	1.943858	0.702195	9.699694
							8.997499			8.997499
										$\frac{1}{2} = 4.4987495$
										≈ 4.50
	-148	-148,393.000		-40	-40,133.000					
Ⅱ	393.901	0.901	-2.999	134.913	1.913	+0.085	5.737087			0.076585
2	396.301	3.301	+5.399	133.114	0.114	-1.884		0.615486	6.219084	
3	399.300	6.300	-2.400	133.029	0.029	+1.799	0.069600			11.333700
							5.806687	0.615486	6.219084	11.410285
							5.191201			5.191201
										$\frac{1}{2} = 2.5956005$
										$= 2.60$

面積計算書

工区

ブロック

18

計算者

計算者

備考

715711 Ⅱ
" 71

点	①	②	③	④	⑤	⑥	③ × ⑤		② × ⑥	
	X	X-(定数)	X _{n-1} -X _{n+1}	Y	Y-(定数)	Y _{n-1} -Y _{n+1}	+	-	+	-
	-148	-148,445.000		-40	-40,131.000					
4	445.330	0.330	-0.099	131.718	0.718	-2.999	0.071082		0.989670	
Ⅱ	448.329	3.329	+3.098	131.632	0.632	+2.913		1.957936		9.697377
6	448.428	3.428	-2.999	134.631	3.631	+0.086	10.889369			0.294808
							10.960451	1.957936	0.989670	9.992185
							9.002515			9.002515
										$\frac{1}{2} = 4.5012575$
										$\approx 4.50^{\text{m}^2}$
	-148	-148,448.000		-40	-40,231.000					
10	451.638	3.638	+3.012	231.197	0.197	-0.186		0.593364	0.676668	
71	451.738	3.738	-2.912	234.195	3.195	+3.184	9.303840			11.901792
11	448.726	0.726	-0.100	234.381	3.381	-2.998	0.338100		2.176548	
							9.641940	0.593364	2.253216	11.901792
							9.048576			9.048576
										$\frac{1}{2} = 4.524288$
										$\approx 4.52^{\text{m}^2}$

面積計算書

工区

ブロック

18

計算者

精算者

備考

陽印

点	①	②	③	④	⑤	⑥	③ × ⑤		② × ⑥	
	X	X - (定数)	X _{n-1} - X _{n+1}	Y	Y - (定数)	Y _{n-1} - Y _{n+1}	+	-	+	-
	-148	-148,436.000		-40	-40,232.000					
12	441.218	5.218	+1.265	234.845	2.845	+2.367		5.305925		12.351006
11	438.224	2.224	-4.859	235.030	3.030	-2.182	14.722770		4.852768	
13	436.359	0.359	+2.994	232.663	0.663	-0.185		1.985022	0.066415	
							14.722770	7.290947	4.919183	12.351006
							7.431823			7.431823
									1/2 = 3.7159115	
										≒ 3.72

面積計算書

工
区

ブ
ロ
ック

計
算
者

監
理
者

精
算
者



備
考

水路7号線

点	①	②	③	④	⑤	⑥	③ × ⑤		② × ⑥		
	X	X-(定数)	X _{n-1} -X _{n+1}	Y	Y-(定数)	Y _{n-1} -Y _{n+1}	+	-	+	-	
34	-148 374.391	-148.370 4.291	-1.460	-40 151.537	-40.130 21.537	-4.339	31.444020			18.618649	
1	374.570	4.570	+19.610	149.402	19.402	-16.624		380.473220		75.971680	
2	393.901	23.901	+24.730	134.913	4.913	-16.373		121.498490		391.331073	
3	399.300	29.300	+51.429	133.029	3.029	-3.195		155.772441		93.613500	
4	445.330	75.330	+48.095	131.718	1.718	+0.631		82.627210			47.533230
5	447.395	77.395	-45.626	133.660	3.660	+3.300	166.991160				255.403500
26	399.704	29.704	-52.533	135.018	5.018	+3.031	263.610594				90.032824
25	394.862	24.862	-23.277	136.691	6.691	+15.490	155.746407				385.112380
23	376.427	6.427	-18.832	150.508	20.508	+17.050	386.206656				109.580350
22	376.030	6.030	-2.136	153.741	23.741	+1.029	50.710776				6.201870
							1054.709613	740.377361	579.534902	893.867152	
							314.332252			314.332252	
								1/2 = 157.166126			
								≒ 157.17 m ²			

面積計算書

工
区

ブ
ロ
ック

18

計
算
者



符
算
者

備
考

木路11号線.

点	①	②	③	④	⑤	⑥	③ × ⑤		② × ⑥	
	X	X-(定数)	X _{n-1} -X _{n+1}	Y	Y-(定数)	Y _{n-1} -Y _{n+1}	+	-	+	-
18	148 374.026	148.370 4.026	-27.098	40 153.557	40.150 3.557	-36.746	96.387586		117.939396	
18	374.291	4.291	+28.531	151.537	1.537	+33.804		43.852147		115.052964
19	402.557	32.557	+27.098	187.361	37.361	+36.746		1012.408378		1196.339522
17	401.389	31.389	-28.531	188.283	38.283	-33.804	1092.252273		1061.073756	
							1188.639859	1056.260525	1209.013152	1341.392486
							132,379.334			192,379.934
								$\times \frac{1}{2} = 66.189667$		
								$\approx 66.19 \text{ m}^2$		

計年月
算日

計算者



検査者



B. NO. 18

各筆面積計算書

地番	算式	隅切	地積	摘要
1	畑 194-1 田		309.44	
2	畑 186		1343.14	
3	畑 187-1 田		927.85	
4	畑 188 田		379.09	
5	保 18-1号		499.08	
6	保 18-2号		303.29	
7	畑 193-1		332.65	
8	畑 195-3		92.24	
9	畑 194-1 田		555.45	
		計	4742.23	
		全体	4742.39	
		差	-0.16	
			3939.86	宅地 7筆
			802.37	保留地 2筆
			157.17	水路 7号線 2M
			66.19	" 11号線 1.5M