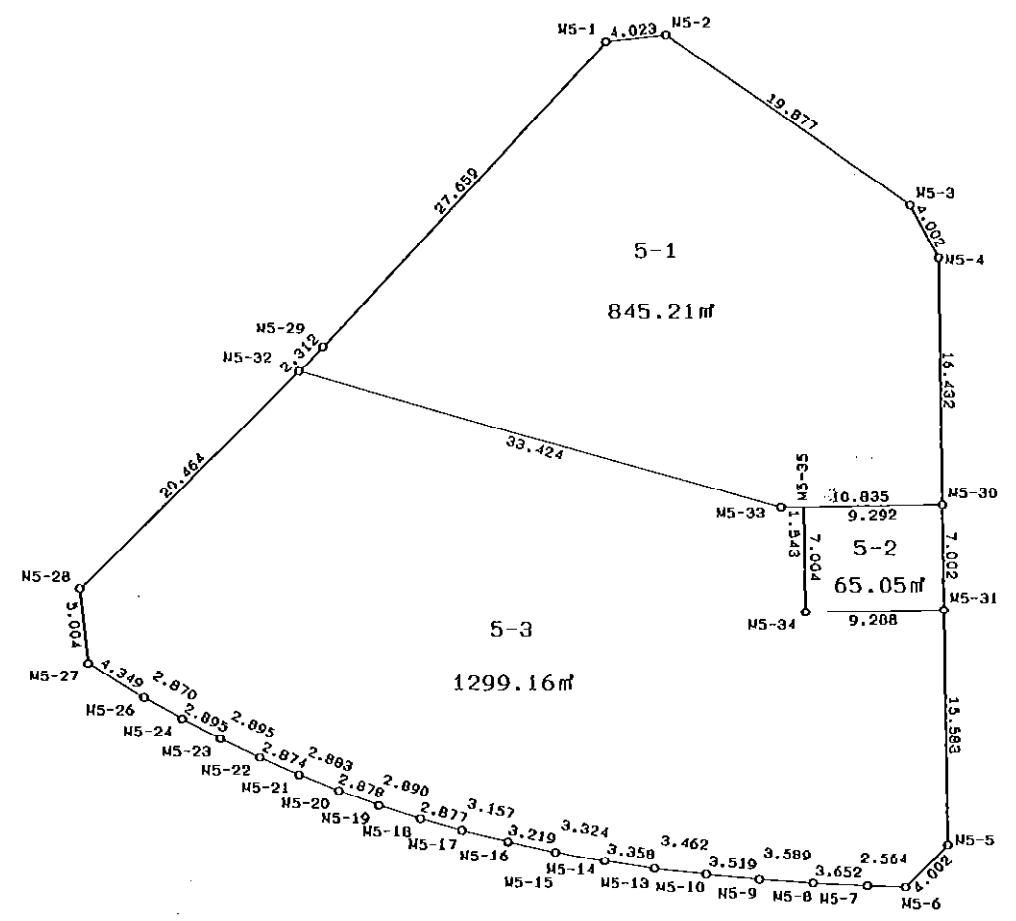
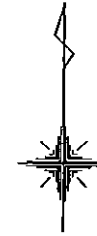


5 街区



S=1:500

\* \* 面積計算 (座標法) \* \*

地 器械点	番 : 5 視準点	内角	方向角	距離	[1] X(i)	[2] Y(i)	[3] X(i+1)-X(i-1)	[2]*[3]
M5-1	M5-29	139-17-36	222-47-05	27.659	-148499.837	-37929.399	-20.755	787224.676245
M5-29	M5-32	181-46-38	224-33-43	2.312	-148520.136	-37948.186	-21.946	832810.889956
M5-32	M5-28	180-24-16	224-57-59	20.464	-148521.783	-37949.808	-16.126	611978.603808
M5-28	M5-27	128-29-32	173-27-31	5.004	-148536.262	-37964.270	-19.450	738405.051500
M5-27	M5-26	127-58-22	121-25-53	4.349	-148541.233	-37963.700	-7.239	274819.224300
M5-26	M5-24	178-15-06	119-40-59	2.870	-148543.501	-37959.989	-3.689	140034.399421
M5-24	M5-23	177-50-49	117-31-48	2.895	-148544.922	-37957.496	-2.759	104724.731464
M5-23	M5-22	177-55-11	115-26-59	2.895	-148546.260	-37954.929	-2.582	97999.626678
M5-22	M5-21	177-59-04	113-26-03	2.874	-148547.504	-37952.315	-2.387	90592.175905
M5-21	M5-20	177-45-17	111-11-20	2.883	-148548.647	-37949.678	-2.185	82920.046430
M5-20	M5-19	178-12-33	109-23-53	2.878	-148549.689	-37946.990	-1.998	75818.086020
M5-19	M5-18	177-44-44	107-08-37	2.890	-148550.645	-37944.275	-1.808	68603.249200
M5-18	M5-17	177-48-02	104-56-39	2.877	-148551.497	-37941.513	-1.594	60478.771722
M5-17	M5-16	178-41-14	103-37-53	3.157	-148552.239	-37938.733	-1.486	56376.957238
M5-16	M5-15	178-38-06	102-15-59	3.219	-148552.983	-37935.665	-1.428	54172.129620
M5-15	M5-14	177-48-59	100-04-58	3.324	-148553.667	-37932.519	-1.266	48022.569054
M5-14	M5-13	178-10-13	98-15-11	3.358	-148554.249	-37929.246	-1.064	40356.717744
M5-13	M5-10	178-03-55	96-19-06	3.462	-148554.731	-37925.923	-0.863	32730.071549
M5-10	M5-9	178-55-56	95-15-02	3.519	-148555.112	-37922.482	-0.703	26659.504846
M5-9	M5-8	178-35-01	93-50-03	3.589	-148555.434	-37918.978	-0.562	21310.465636
M5-8	M5-7	178-55-41	92-45-44	3.652	-148555.674	-37915.397	-0.416	15772.805152
M5-7	M5-6	179-09-35	91-55-19	2.564	-148555.850	-37911.749	-0.262	9932.878238
M5-6	M5-5	133-22-18	45-17-37	4.002	-148555.936	-37909.186	2.729	-103454.168594
M5-5	M5-31	133-33-46	358-51-23	15.583	-148553.121	-37906.342	18.395	-697287.161090
M5-31	M5-30	180-09-42	359-01-05	7.002	-148537.541	-37906.653	22.581	-855970.131393
M5-30	M5-4	179-54-16	358-55-21	16.432	-148530.540	-37906.773	23.430	-888155.691390
M5-4	M5-3	152-37-00	331-32-21	4.002	-148514.111	-37907.082	19.947	-756132.564654
M5-3	M5-2	152-47-55	304-20-16	19.877	-148510.593	-37908.989	14.730	-558399.407970
M5-2	M5-1	139-09-13	263-29-29	4.023	-148499.381	-37925.402	10.756	-407925.623912
							倍面積	4418.882723
							面積	2209.441362

\* \* 面積計算 (座標法) \* \*

地 器械点	番 : 5-1 視準点	内角	方向角	距離	[1] X(i)	[2] Y(i)	[3] X(i+1)-X(i-1)	[2]*[3]
M5-1	M5-29	139-17-36	222-47-05	27.659	-148499.837	-37929.399	-20.755	787224.676245
M5-29	M5-32	181-46-38	224-33-43	2.312	-148520.136	-37948.186	-21.946	832810.889956
M5-32	M5-33	60-58-49	105-32-32	33.424	-148521.783	-37949.808	-10.603	402381.814224
M5-33	M5-30	163-24-19	88-56-51	10.835	-148530.739	-37917.606	-8.757	332044.475742
M5-30	M5-4	89-58-30	358-55-21	16.432	-148530.540	-37906.773	16.628	-630313.821444
M5-4	M5-3	152-37-00	331-32-21	4.002	-148514.111	-37907.082	19.947	-756132.564654
M5-3	M5-2	152-47-55	304-20-16	19.877	-148510.593	-37908.989	14.730	-558399.407970
M5-2	M5-1	139-09-13	263-29-29	4.023	-148499.381	-37925.402	10.756	-407925.623912
							倍面積	1690.438187
							面積	845.219094

\* \* 面積計算 (座標法) \* \*

地 器械点	番 : 5-2 視準点	内角	方向角	距離	[1] X(i)	[2] Y(i)	[3] X(i+1)-X(i-1)	[2]*[3]
M5-35	M5-34	90-02-24	178-59-08	7.004	-148530.711	-37916.063	-7.174	272009.835962
M5-34	M5-31	89-56-50	88-55-58	9.288	-148537.714	-37915.939	-6.830	258965.863370
M5-31	M5-30	90-05-07	359-01-05	7.002	-148537.541	-37906.653	7.174	-271942.328622
M5-30	M5-35	89-55-39	268-56-44	9.292	-148530.540	-37906.773	6.830	-258903.259590
							倍面積	130.111120
							面積	65.055560

\* \* 面積計算 (座標法) \* \*

地 器械点	番 : 5-3 視準点	内角	方向角	距離	[1] X(i)	[2] Y(i)	[3] X(i+1)-X(i-1)	[2]*[3]
M5-32	M5-28	119-25-27	224-57-59	20.464	-148521.783	-37949.808	-5.523	209596.789584
M5-28	M5-27	128-29-32	173-27-31	5.004	-148536.262	-37964.270	-19.450	738405.051500
M5-27	M5-26	127-58-22	121-25-53	4.349	-148541.233	-37963.700	-7.239	274819.224300
M5-26	M5-24	178-15-06	119-40-59	2.870	-148543.501	-37959.989	-3.689	140034.399421
M5-24	M5-23	177-50-49	117-31-48	2.895	-148544.922	-37957.496	-2.759	104724.731464
M5-23	M5-22	177-55-11	115-26-59	2.895	-148546.260	-37954.929	-2.582	97999.626678
M5-22	M5-21	177-59-04	113-26-03	2.874	-148547.504	-37952.315	-2.387	90592.175905
M5-21	M5-20	177-45-17	111-11-20	2.883	-148548.647	-37949.678	-2.185	82920.046430
M5-20	M5-19	178-12-33	109-23-53	2.878	-148549.689	-37946.990	-1.998	75818.086020
M5-19	M5-18	177-44-44	107-08-37	2.890	-148550.645	-37944.275	-1.808	68603.249200
M5-18	M5-17	177-48-02	104-56-39	2.877	-148551.497	-37941.513	-1.594	60478.771722
M5-17	M5-16	178-41-14	103-37-53	3.157	-148552.239	-37938.733	-1.486	56376.957238
M5-16	M5-15	178-38-06	102-15-59	3.219	-148552.983	-37935.665	-1.428	54172.129620
M5-15	M5-14	177-48-59	100-04-58	3.324	-148553.667	-37932.519	-1.266	48022.569054
M5-14	M5-13	178-10-13	98-15-11	3.358	-148554.249	-37929.246	-1.064	40356.717744
M5-13	M5-10	178-03-55	96-19-06	3.462	-148554.731	-37925.923	-0.863	32730.071549
M5-10	M5-9	178-55-56	95-15-02	3.519	-148555.112	-37922.482	-0.703	26659.504846
M5-9	M5-8	178-35-01	93-50-03	3.589	-148555.434	-37918.978	-0.562	21310.465636
M5-8	M5-7	178-55-41	92-45-44	3.652	-148555.674	-37915.397	-0.416	15772.805152
M5-7	M5-6	179-09-35	91-55-19	2.564	-148555.850	-37911.749	-0.262	9932.878238
M5-6	M5-5	133-22-18	45-17-37	4.002	-148555.936	-37909.186	2.729	-103454.168594
M5-5	M5-31	133-33-46	358-51-23	15.583	-148553.121	-37906.342	18.395	-697287.161090
M5-31	M5-34	90-04-35	268-55-58	9.288	-148537.541	-37906.653	15.407	-584027.802771
M5-34	M5-35	270-03-10	358-59-08	7.004	-148537.714	-37915.939	6.830	-258965.863370
M5-35	M5-33	89-58-29	268-57-37	1.543	-148530.711	-37916.063	6.975	-264464.539425
M5-33	M5-32	196-34-55	285-32-32	33.424	-148530.739	-37917.606	8.928	-338528.386368
							倍面積	2598.329683
							面積	1299.164842