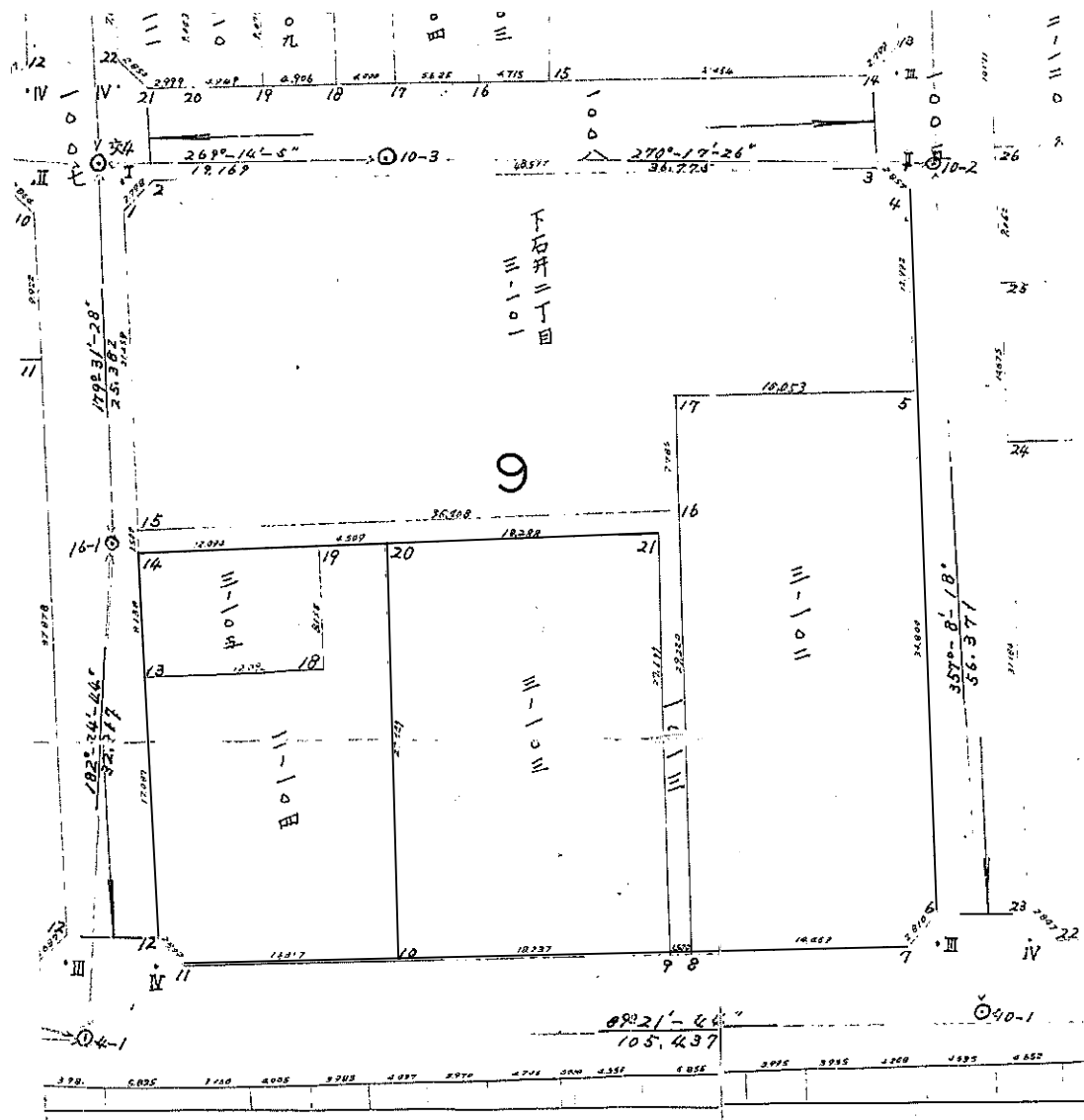


9 ブロック



座標面積計算

工区

ブロック

ρ

計算者

大隈昌信

点検

196

地番

点	① X	② X-(定数)	③ X _{n-1} -X _{n+1}	④ Y	⑤ Y-(定数)	⑥ Y _{n-1} -Y _{n+1}	③ × ⑤ +	③ × ⑤ -	② × ⑥ +	② × ⑥ -
下石 309			1,077,284.610							
下石 309-2			597,997.858							
通路			96,163.353							
内山下 4-19			98,415.221							
下石 310-1			349,532.062							
下石 310-5			503,560.634							
小計			2,723,533.738							
隅切 1			1,999.850							
2			1,999.825							
3			2,000.320							
4			2,000.360							
合計			2,731,554.093							
全面積			2,731,553.054							
E			0.001039							

196

面積計算書

工区

ブロック

9

番地

大隈昌信

番地



備考

196

地番	点	①	②	③	④	⑤	⑥	③	⑤	②	⑥
		X	X—(定数) (48,900.000)	X _{n-1} —X _n	Y	Y—(定数) (37,800.000)	Y _{n-1} —Y _n	+	-	+	-
I		148,960.913	+ 60.913	52.808	37,824.666	+ 24.666	+50.810	1,302,562.128		3,094,989.530	
II		148,960.259	+ 60.259	-51.110	37,772.093	- 27.907	+54.276	1,426,326.770		3,270,617.484	
III		149,012.023	+ 12.023	-52.808	37,770.390	- 29.610	-50.810	1,563,644.880			5,691,888.630
IV		149,013.067	+ 13.067	51.110	37,822.903	+ 22.903	-54.276	1,170,572.330			6,136,824.692
				+ 103.918			+105.086	5,463,106.108	0.000.000	6,365,607.014	11,828,719.122
				- 103.918			-105.086	0.000.000			6,365,607.014
				0.000			0.000	5,463,106.108			5,463,106.108
							1/2 =	2,731,553.054			1/2 = 2,731,553.054

面積計算書

工区

ブロック

9

計算者

大隈昌信

精算者

備考

測

測

測

点	①	②	③	④	⑤	⑥	③ × ⑤		② × ⑥	
	X	X-(定数)	X _{n-1} -X _{n+1}	Y	Y-(定数)	Y _{n-1} -Y _{n+1}	+	-	+	-
I	148,960.913	(148,960.000) + 0.913	+ 2.024	37,824.666	(37,820.000) + 4.666	+ 1.932	9,443,984		1,763,916	
2	148,960.888	+ 0.888	- 1.999	37,822.666	+ 2.666	+ 0.068		5,329,334	0,060,384	
1	148,962.912	+ 2.912	- 0.025	37,824.598	+ 4.598	- 2.000		0,114,950		5,824,000
							9,443,984	5,444,284	1,824,300	5,824,000
							F ₁ = 3,999,700		F ₁ = 1,999,700	
							F ₂ = 1,999,850		F ₂ = 1,999,850	
3	148,960.284	(148,960.000) + 0.284	+ 1.999	37,774.093	(37,770.000) + 4.093	- 0.066	8,181,907		0,018,704	
II	148,960.259	+ 0.259	- 1.974	37,772.093	+ 2.093	+ 2.066		4,131,582	0,535,094	
4	148,962.258	+ 2.258	- 0.025	37,772.027	+ 2.027	- 2.000		0,050,675		4,516,000
							8,181,907	4,182,257	0,535,094	4,534,744
							F ₁ = 3,999,650		F ₁ = 3,999,650	
							F ₂ = 1,999,825		F ₂ = 1,999,825	
6	149,010.024	(149,010.000) + 0.024	+ 0.040	37,770.456	(37,770.000) + 0.456	+ 2.000	0,018,240		0,048,000	
II	149,012,023	+ 2.023	- 2.039	37,770.390	+ 0.390	- 1.934		0,795,210		3,912,482
7	149,012.063	+ 2.063	+ 1.999	37,772.390	+ 2.390	- 0.066	4,777,610		0,136,158	
							4,795,850	0,795,210	0,048,000	4,048,640
							F ₁ = 2,000,640		F ₁ = 2,000,640	
							F ₂ = 2,000,320		F ₂ = 2,000,320	

面積計算書

工区

ブロック

大隈昌信

計算者

備考

点	① X	② X-(定数) (48.010.000)	③ X _{n-1} -X _n	④ Y	⑤ Y-(定数) (37.820.000)	⑥ Y _{n-1} -Y _n	⑦ +	⑧ -	⑨ +	⑩ -
11	148.013.027	+3.027	-1.999	37.820.903	+0.903	+0.068		1.805.097	0.205836	
10	148.013.067	+3.067	+1.959	37.822.903	+2.903	-2.068	5.686.977			6.342.556
12	148.011.068	+1.068	+0.040	37.822.971	+2.971	+2.000	0.118840		2.136.000	
							5.805.817	1.805.097	2.341.836	6.342.556
							F=4.000.720		F=4.000.720	
							F/2=2.000.360		F/2=2.000.360	
2	148.960.888	+0.888	+2.628	37.822.666	+22.666	+50.505	59.566.248		44.848.440	
3	148.960.284	+0.284	-1.370	37.774.093	-25.907	+50.639	35.492.590		14.381.476	
4	148.962.258	+2.258	-14.959	37.772.027	-27.973	+2.493	418.448.107		5.629.194	
5	148.975.243	+15.243	-13.098	37.771.600	-28.400	-15.893	371.954.800			238.187.118
17	148.975.354	+15.354	-7.894	37.787.920	-12.880	-15.076	97.467.218			243.898.290
16	148.983.137	+23.137	-9.004	37.787.676	-12.304	-35.953	95.359.520			247.154.080
15	148.984.359	+24.359	+20.225	37.823.873	+23.873	37.113	112.687.575			838.022.140
1	148.962.912	+2.912	+23.471	37.824.598	+24.598	-36.902	40.725.216			831.844.561
							482.831.425			904.035.567
							577.338.658		3.514.784	898.895.818
							2,153,769,221			4,123,115
							F=15,775,64		68,373,894	2,220,151,118
							1,077,884,610			2,153,769,221
							F/2=1,075,884,82			F=2,153,779,564
										1,077,884,610
										F/2=1,075,884,82

鴨田

下石三〇九

面積計算書

工
区

ブ
ロ
ック

計
算
者

大隈昌信

精
算
者

備
考

点	①	②	③	④	⑤	⑥	③ × ⑤		② × ⑥	
	X	X-(定数)	X _{n-1} -X _{n+1}	Y	Y-(定数)	Y _{n-1} -Y _{n+1}	+	-	+	-
		(148,980,000)			(37,770,000)					
5	148,975,243	-4,757	-34.6 ⁷⁰ 67	37,771,600	+1,620	+17.2 ¹⁸⁷ 64		2000 55,470,400		81,806,129 83,076,248
6	149,010,024	+30,024	-36.820	37,770,456	+0,456	-0.790		16,789,920		23,718,960
7	149,012,063	+32,063	-2.326	37,772,390	+2,390	-16,400		5,559,140		525,833,200
8	149,012,350	+32,350	+36.70 ⁹ 8	37,786,856	+16,856	-15.5 ²⁶³ 530	66,904 618,750,048			483,758,050 502,395,500
17	148,975,35 ⁴	-4.64 ⁶ 5	+37.107	37,787.9 ⁶⁵³ 20	+17.9 ⁶⁵³ 20	+15.256	155,049,871 164,957,440			879,376 70,864,120
							1273,818,775 1283,707,488	77,821,060 77,819,460		
			+73.815 -73.815			-32.720 -32.720	1195,995,715 F=1205,888,028			1195,995,715 F=1205,888,028
							597,997,858 F/2=602,944,014			597,997,858 F/2=602,944,014
		(149,000,000)			(37,800,000)					
15	148,984,359	-15,641	+2,721	37,823,873	+23,873	+36.1 ³³⁸ 27	44,958,433			8,362,658 565,062,407
16	148,983,137	-16,863	-27,991	37,787.6 ⁴⁸⁵ 86	-12.3 ⁵¹⁵ 04	+37.017	350,307,365			124,217,671
8	149,012,350	+12,350	-29,243	37,786,856	-13,144	-0.6 ⁸⁷¹ 660	384,369,992			10,756,850 8,151,000
9	149,012,380	+12,380	+27,663	37,788,356	-11,644	-2.2 ⁰⁹⁶ 96		322,107,972		25,948,480
21	148,984,687	-15,313	+26,522	37,789.1 ⁸⁹⁵² 52	-11.0 ⁸ 48	-35.467		293,015,055		543,106,171
14	148,985,858	-14,142	+0,328	37,823,823	+23,823	-34.9 ^{p21} 21	7,813,944			493,852,782
							807,449,734 609,812,628	615,123,028 10,96888,953		1,229,285,659
			-57,230 -57,230			-73.146 -73.146	F=192,326,706 F=191,925,005			F=192,326,706
							F/2=96,163,353 F/2=95,862,502			F/2=96,163,353

11-11-03

22

23

11-11-03

面積計算書

工区

ブロック

計算者

大隈昌信

精算者

備考

点	①	②	③	④	⑤	⑥	③ × ⑤		② × ⑥	
	X	X-(定数)	X _{n-1} -X _n	Y	Y-(定数)	Y _{n-1} -Y _n	+	-	+	-
14	148.985.858	(148.990.000) - 4.142	+ 8.5 ³⁹ ₄₇	37.823.823	(37.810.000) + 13.823	+ 11.812	118.0 ³⁴ ₆₂ 243			48.925 304
19	148.985.45 ²	- 4.5 ⁴⁸ ₅₉	- 7.72 ⁷ ₅	37.811.736	+ 1.736	+ 12.362		2 072 13.410 600		222 376 56.347 100
18	148.993.58 ⁵	+ 3.5 ⁵ ₈₃	- 8.5 ³⁹ ₄₇	37.811.461	+ 1.461	- 11.812		5 479 12.478 601		46 020 42.922 226
13	148.993.991	+ 3.991	+ 7.72 ⁷ ₅	37.823.548	+ 13.548	- 12.362	485 386 104.5 ⁴⁸ ₅₉ 200			49.336 742
							719 993 222.720.547	551 25.889.061		
							0 422 F ₁ = 196.831 542	0 422		0 422 F ₁ = 196.831 542
							F ₂ = 98.415 971	2 21		2 21 F ₂ = 98.415 971
12	149.011.068	(149.000.000) + 11.068	+ 19.036	37.822.971	(37.810.000) + 12.971	- 2.645	246.915 956			29.274 860
13	148.993.991	- 6.009	+ 17.48 ³ _X	37.823.548	+ 13.548	+ 11.510	859 884 226.886 780			69.163 590
18	148.993.58 ⁵	- 6.41 ⁵ ₉	+ 8.5 ³⁹ ₄₇	37.811.461	+ 1.461	+ 11.812	5 479 12.478 601			773 980 75.797 604
19	148.985.45 ²	- 14.5 ⁴⁸ ₅₉	+ 8.28 ⁴ ₅	37.811.736	+ 1.736	+ 4.23 ¹ ₂	1 024 14.382 760			52 588 61.575 600
20	148.985.29 ³⁰¹	- 14.7 ⁶⁸⁹ ₀₂	- 27.29 ¹ ₃	37.807.22 ³⁰ ₉	- 2.77 ⁷⁰ ₁	+ 5.147	576 070 75.628 903			655 753 75.671 194
10	149.012.743	+ 12.743	- 27.72 ⁶ ₉	37.806.589	- 3.411	- 13.67 ³ ₄	573 386 94.583 619			235 039 174.247 782
11	149.013.027	+ 13.027	+ 1.675	37.820.903	+ 10.903	- 16.382	18.262 525			213.48 314
			- 55.022							
			- 25.022							
							064 124 F ₁ = 699.138 944			064 124 F ₁ = 699.138 944
							532 062 F ₂ = 349.569 472			532 062 F ₂ = 349.569 472

四一九

下石三〇一

面積計算書

工区

ブロック

10

計算者

大隈昌信

精算者

備考

10.11.10.11.12

点	①	②	③	④	⑤	⑥	③ × ⑤	② × ⑥
	X	X-(定数)	X _{n-1} -X _{n+1}	Y	Y-(定数)	Y _{n-1} -Y _{n+1}	+ -	+ -
20	148.985.298 ³⁰¹	149.800.000 ⁵⁸⁹ - 14.522 ⁹	+28.056	37.807.229 ²³⁰	(37.800.000) + 7.229 ³⁹	637	844.880 202.816.824	259.246.263 256.352.774
21	148.984.687	- 15.313	+27.082 ⁷⁹	37.789.152 ^{8.952}	- 1.048 ⁴	+18.873	9.168.792 293.785.536	017.562 289.402.249
9	149.012.380	+ 12.380	+28.056	37.788.356	- 11.644	-17.637 ⁶³⁷	326.684.064	218.346.060 315.270.060
10	149.012.743	+ 12.743	+27.082 ⁷⁹	37.806.589	+ 6.589	-18.873 ⁴	423.531 178.443.298	511.382 240.498.639
							Fi = 1007.121.267 1007.729.722 503.560.634	Fi = 1007.121.267 1007.729.722 503.560.634
							F1/2 = 500.864.864	F1/2 = 500.864.864