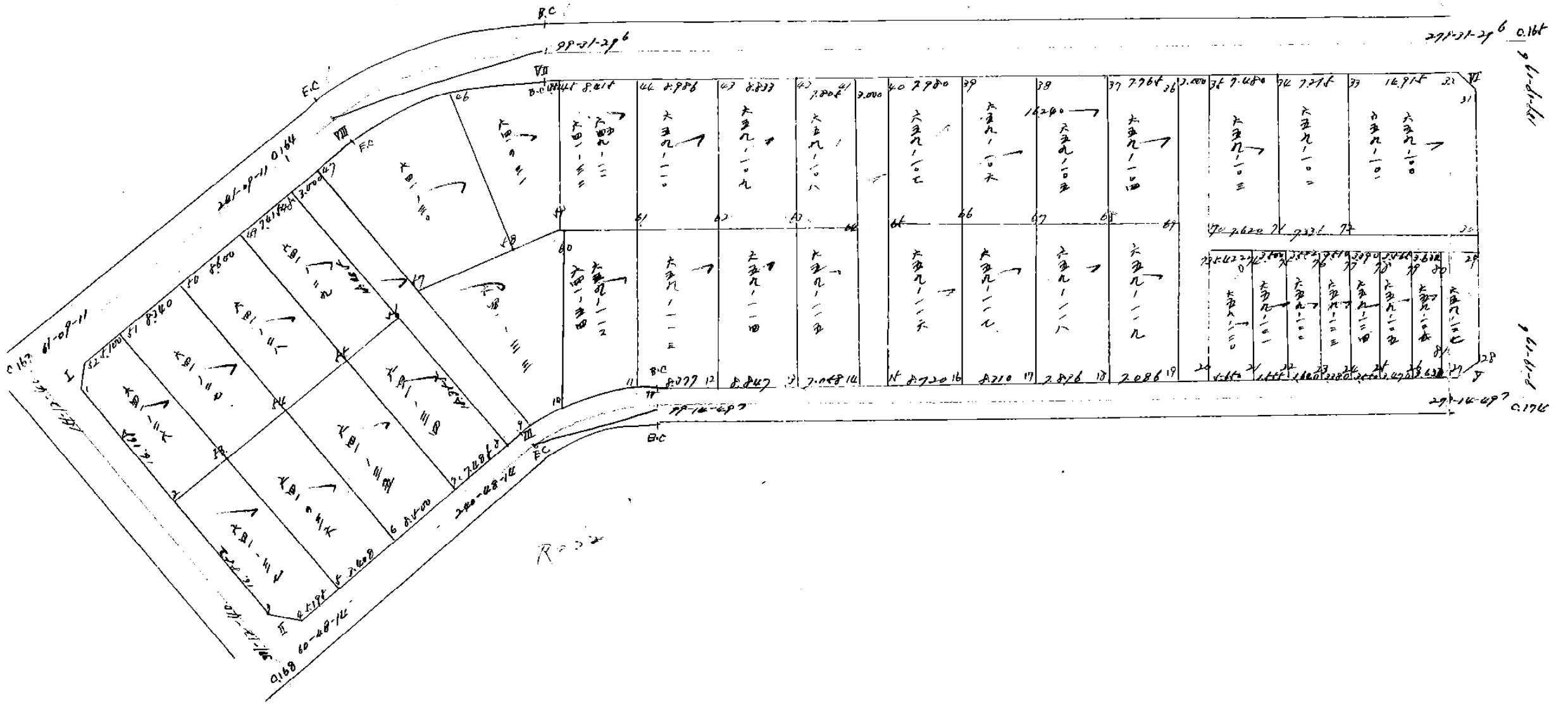


R=26

CL=24.110



0.164

0.176

291-16-497

R=22

# 面積計算書

工区: \_\_\_\_\_ ブロック: 98 計算者: \_\_\_\_\_ 精算者: \_\_\_\_\_ 備考: \_\_\_\_\_

点	①	②	③	④	⑤	⑥	③	×	⑤	②	×	⑥
	X	X - (定数)	$X_{n-1} - X_n$	Y	Y - (定数)	$Y_{n-1} - Y_n$	+		-	+		-
		<del>154, 100, 000</del>			<del>57, 330, 000</del>							
V	<del>154 182 320</del>	2.320	- 1.653	<del>333 623</del>	2.623	- 2.298	5.9888			5.3313		
28	<del>154 180 346</del> <del>154 181 999</del>	0.346	- 0.321	<del>333 299</del> <del>335 597</del>	2.299	+ 1.994	1.0589					0.6870
29	<del>154 181 999</del>	1.999	+ 1.994	<del>335 597</del>	5.699	+ 0.324			11.0484			0.6476
							7.0477		11.0484	5.3213		1.3706
							4.0007		$\frac{1}{2} = 2.0003 \text{ m}^2$			4.0007
									0.6060			
		<del>154, 140, 000</del>			<del>57, 320, 000</del>							
VI	<del>154 148 931</del>	8.931	- 2.205	<del>328 142</del>	8.142	+ 1.648	18.7673					14.7182
32	<del>154 148 600</del>	8.600	+ 1.994	<del>330 114</del>	10.114	+ 0.324			17.9650	<del>2.7864</del>		2.7864
31	<del>154 150 705</del>	10.905	+ 0.331	<del>328 466</del> <del>327 218</del>	8.466	- 1.992			2.8022	21.5046		
							18.7673		22.7672	21.5046		17.5044
							3.9799		<del>22.8229</del>	<del>24.2910</del>		<del>20.6044</del>
							<del>3.9844</del>		<del>22.8229</del>	<del>24.2910</del>		4.0002
									$\frac{1}{2} = 2.0000 \text{ m}^2$			3.9844
									0.6060			

# 面積計算書

点	①		②		③		④		⑤		⑥		備考
	X	X - (定数)	X <sub>n-1</sub> - X <sub>n</sub>	Y	Y - (定数)	Y <sub>n-1</sub> - Y <sub>n</sub>	+	-	+	-			
I	<del>154.150.000</del>		<del>35.480.000</del>										
	102	4.102	2.718	486.825	6.825	0.789		18.5503		3.2364			
	154	5.855	0.965	485.862	5.862	1.752	5.6568		10.2599				
	153	3.137	1.753	485.073	5.073	0.963	8.8929			3.0209			
						14.5497	18.5503	10.2599	6.2573				
						4.0006 $\frac{1}{2} = 2.0003 m^2$			4.0006				
							0.6050						
II	<del>154.180.000</del>		<del>35.460.000</del>										
	539	6.539	0.779	467.000	7.000	2.709		8.9930		17.7141			
	184	5.563	1.753	467.254	7.254	0.963	12.7162			5.2591			
	184	4.786	0.976	467.960	7.963	1.746		9.7238		8.3563			
						12.7162	16.7168	17.7141	12.7134				
						4.0006 $\frac{1}{2} = 2.0003$			4.0007				
							0.6050						

# 面積計算書

工  
区

ブ  
ロ  
ック

88

計  
算  
者

精  
算  
者

備  
考

641-26

641-37

点	①	②	③	④	⑤	⑥	③	×	⑤	②	×	⑥
	X	X -- (定数)	X <sub>n-1</sub> - X <sub>n</sub>	Y	Y -- (定数)	Y <sub>n-1</sub> - Y <sub>n</sub>	+		-	+		-
		-154.150.000			-15.470.000							
1	-154 154 855	5.855	+ 16.884	-154 485 862	15.862	- 6.996			267.8140	40.9615		
2	-154 170 021	20.021	+ 10.772	-154 478 077	8.077	- 14.081			87.0054	281.9157		
53	-154 166 627	16.627	- 19.325	-154 471 781	1.781	+ 2.529	34.4534					42.0496
51	-154 150 676	0.676	- 13.490	-154 480 606	10.606	+ 13.292	143.0749					2.9853
52	-154 153 137	3.137	+ 5.199	-154 485 073	15.073	+ 5.256			78.0630			16.4880
							177.5283	432.8824	322.8772	67.5227		
							255.3541	$\frac{1}{2} = 127.6770 \text{ m}^2$	78.6222			255.3443
		-154.160.000			-15.460.000							
2	-154 170 021	10.021	+ 18.159	-154 478 077	18.077	- 1.818			328.2602	18.2181		
3	-154 184 786	24.786	+ 15.542	-154 469 763	7.763	- 10.823			154.8449	268.2588		
4	-154 185 563	25.563	- 1.757	-154 467 254	7.254	- 7.243	12.7452			185.1528		
5	-154 183 027	23.027	- 18.936	-154 462 720	2.720	+ 4.527	51.5059					104.2522
53	-154 166 627	6.627	- 13.008	-154 471 781	11.781	+ 15.359	153.2472					101.7708
									483.1051	471.6297	206.0230	
							27.4282	462.9461	546.2427	189.7750		
							265.6068	132.8033		265.6067		
							247.4478	$\frac{1}{2} = 123.7238 \text{ m}^2$		247.4479		
								40.1729				

# 面積計算書

工  
区

ブ  
ロ  
ック

88

計  
算  
者

精  
算  
者

備  
考

641-27

点	①	②	③	④	⑤	⑥	③	×	⑤	②	×	⑥
	X	X - (定数)	X <sub>n-1</sub> - X <sub>n</sub>	Y	Y - (定数)	Y <sub>n-1</sub> - Y <sub>n</sub>	+		-	+		-
		-154.140.000			-21.460.000							
51	-154 150 676	10.676	19.974	-21 470 606	20.606	- 1.521			411.5742	16.2381		
53	-154 166 627	26.627	11.949	-21 471 781	11.781	- 16.249			140.9711	432.6621		
54	-154 162 625	22.625	19.974	-21 484 357	4.357	+ 1.521	87.0267					34.4126
50	-154 146 653	6.653	11.949	-21 473 302	13.302	+ 16.249	158.7455					108.1045
							245.9722	552.3553	448.9002	142.5771		
							306.3831	1/2 = 153.1915 m <sup>2</sup>		306.3831		

641-36

点	①	②	③	④	⑤	⑥	③	×	⑤	②	×	⑥
	X	X - (定数)	X <sub>n-1</sub> - X <sub>n</sub>	Y	Y - (定数)	Y <sub>n-1</sub> - Y <sub>n</sub>	+		-	+		-
		-154.160.000			-21.450.000							
53	-154 166 627	6.627	20.404	-21 471 781	21.781	- 1.627			444.4195	10.8483		
5	-154 183 029	23.029	12.302	-21 462 720	12.720	- 16.389			156.4814	377.6525		
6	-154 178 929	18.929	20.404	-21 444 382	5.382	+ 1.627	109.8143					20.9869
54	-154 162 625	2.625	12.302	-21 468 257	14.257	+ 16.389	176.6198					43.0473
							286.4341	600.9009	328.5008	78.0340		
							314.4668	1/2 = 157.2334 m <sup>2</sup>		314.4668		
								47.5631				

# 面積計算書

工  
区

ブ  
ロ  
ック

88

計  
算  
者

精  
算  
者

備  
考

点	①	②	③	④	⑤	⑥	③ × ⑤		② × ⑥	
	X	X - (定数)	X <sub>n-1</sub> - X <sub>n</sub>	Y	Y - (定数)	Y <sub>n-1</sub> - Y <sub>n</sub>	+	-	+	-
641-28										
		<del>-54, 140.000</del>			<del>-35, 450.000</del>					
50	-154 126 653	6.653	-20.121	-35 473 302	-23.302	-1.413		468.8595	7.4006	
54	-154 162 625	22.625	11.938	-35 464 357	14.357	-16.427		171.3938	371.6608	
55	-154 158 591	18.591	-20.121	-35 456 375	6.875	+1.413	138.3318			26.2690
49	-154 142 502	2.504	11.938	-35 461 770	15.770	+16.427	188.2622			41.1332
							326.5940	640.2523	381.0614	67.4022
							313.6593	1/2 = 156.8296	m <sup>2</sup>	313.6592
								47.0009	↓	
641-35										
		<del>-54, 140.000</del>			<del>-35, 440.000</del>					
54	-154 162 625	12.625	-20.338	-35 464 357	24.357	-1.493		495.3726	18.8491	
6	-154 178 929	28.929	12.159	-35 455 382	15.382	-16.393		189.0297	474.2330	
7	-154 174 784	24.784	-20.338	-35 447 964	7.964	+1.493	161.9718			37.0025
55	-154 158 591	8.591	-12.159	-35 456 375	16.875	+16.393	205.1831			140.8322
							367.1549	682.4023	493.0821	177.8347
							315.2474	1/2 = 157.6237	m <sup>2</sup>	315.2474
								47.6811	↓	

# 面積計算書

工  
区

ブ  
ロ  
ック

AA

計  
算  
者

精  
算  
者

備  
考

点	①	②	③	④	⑤	⑥	③ × ⑤		② × ⑥	
	X	X - (定数)	X <sub>n-1</sub> - X <sub>n</sub>	Y	Y - (定数)	Y <sub>n-1</sub> - Y <sub>n</sub>	+	-	+	-
641-29		-154,120.000			-25,450.000					
49	-154 142 500	12.504	19.665	-35 461 770	15.770	- 2.400		310.1170	30.0096	
55	-154 158 571	28.591	12.561	-35 456 875	6.875	- 15.436		86.3568	441.3306	
56	-154 155 065	25.065	19.665	-35 450 334	0.334	+ 2.400	6.5681			60.1560
48	-154 130 726	8.926	12.561	-35 449 275	9.275	+ 15.436	116.5022			137.7819
							123.0713	396.4732	471.3402	198.7277
							273.2025	$\frac{1}{2} = 136.7012 m^2$		273.2025
								41.3521		
641-34		-154,150.000			-25,450.000					
55	-154 158 571	8.591	19.719	-35 456 875	16.875	- 2.370		332.7581	20.2606	
7	-154 124 784	24.784	12.542	-35 449 764	7.964	- 15.444		99.8844	282.7640	
8	-154 171 133	21.133	19.719	-35 441 431	1.431	+ 2.370	22.2178			50.0852
56	-154 155 065	5.065	12.542	-35 450 334	10.334	+ 15.444	129.6092			78.2238
							157.8268	432.6425	402.1246	128.3090
							274.8157	$\frac{1}{2} = 137.4078 m^2$		274.8156
								41.5658		

# 面積計算書

工  
区

ブ  
ロ  
ック

PP

計  
算  
者

精  
算  
者

備  
考

219

点	①	②	③	④	⑤	⑥	③	×	⑤	②	×	⑥
	X	X - (定数)	X <sub>n-1</sub> - X <sub>n</sub>	Y	Y - (定数)	Y <sub>n-1</sub> - Y <sub>n</sub>	+		-	+		-
		<del>154,100.500</del>			<del>25,400.000</del>							
48	154 138 726	22.926 + 33.654	-35	459 275	29.275 - 15.216			785.2208		592.2980		
81	154 171 133	7.133 + 31.020	-35	441 431	11.431 - 19.968			354.5896		1420.3837		
III	154 169 946	69.946 - 1.458	-35	439 307	9.307 - 2.622			13.5696		183.3984		
91	154 169 675	69.675 - 32.467	-35	438 809	8.809 + 17.340		286.0018					1208.1645
47	154 137 479	27.479 - 30.749	-35	456 647	26.647 + 20.466		819.3686					767.0452
							1118.9400	1339.8104	2196.0801			1975.2077
							220.8704	$\frac{1}{2} = 110.4352 m^2$				220.8704
								$- \frac{0.0011}{100.4352}$				
								33.4063				
		<del>154,140.000</del>			<del>25,420.000</del>							
57	154 132 574	13.574 + 20.505	-35	447 720	17.720 - 9.864			365.2266		106.7459		
91	154 169 675	29.675 + 14.195	-35	438 809	8.809 - 13.988			125.8085		415.0939		
10	154 169 765	29.765 - 20.507	-35	433 742	3.742 - 8.496		76.7371			235.3361		
60	154 149 788	9.788 - 18.695	-35	430 333	0.333 - 2.797		6.2276			25.6438		
59	154 149 790	9.790 + 4.424	-35	430 345	0.345 + 7.377			4.1626		157.7909		
								4.1449		158.1389		
							82.9624	6887	0728	5366		
							82.5709	494.0989	676.4490	264.8806		
							411.5260	205.7681		4364		
								$\frac{1}{2} = 205.7681 m^2$		411.5260		
								$- \frac{0.6007}{205.1674}$		62.0631		

641-33



# 面積計算書

工  
区

ブロック

計  
算  
者

精  
算  
者

備  
考

2A

点	①	②	③	④	⑤	⑥	③ × ⑤		② × ⑥	
	X	X - (定数)	X <sub>n-1</sub> - X <sub>n+1</sub>	Y	Y - (定数)	Y <sub>n-1</sub> - Y <sub>n+1</sub>	+	-	+	-
641-30		-154.130.000			-15.420.000					
47	-154 137 477	- 7.479	+ 17.800	456 647	- 26.647	- 5.821		474.3166	43.5222	
57	-154 139 574	- 23.574	+ 13.187	447 730	- 17.730	- 19.823		4686 233.6794	467.3074	
58	-154 150 660	- 20.660	- 22.027	426 824	- 6.824	- 7.372	150.2986		2096 152.3044	
46	-154 131 549	- 1.549	- 14.873	440 358	- 10.358	+ 16.727	154.7874			25.9101
(Bc) TII	-154 135 774	- 5.774	+ 5.930	453 551	- 23.551	+ 16.289		139.6574		94.0526
641-31		-154.130.000			-15.420.000					
46	-154 131 549	- 1.549	+ 18.844	440 358	- 20.358	+ 6.599	304.3531 487.4879	4826 247.6724	663.0522 4424	119.9627
58	-154 150 660	- 20.660	+ 17.541	416 824	- 16.824	- 9.413	543.0895 185.44	5447 1/2 = 271.5923 m <sup>2</sup> + 6.2242	543.0895 4854	
59	-154 149 790	- 19.790	+ 18.537	430 945	- 10.945	- 8.426	202.8874 203.2297		3502 194.4705	
45	-154 132 110	- 2.110	- 17.267	428 398	- 8.398	+ 0.720	145.1962		6838 160.8527	
(Bc) TII	-154 131 803	- 1.803	- 0.561	430 225	- 10.225	+ 11.960	5.7262		1.5192	21.5638
							6318 353.7424	678.3794 679.0005	356.5532 356.8440	31.7856 272
							324.7676 272.0584	3838 1/2 = 162.5292 m <sup>2</sup> + 2.4242	324.7676 325.0584	164.8082 m <sup>2</sup>

(2A)

49.8544

# 面積計算書

工  
区

ブロック

AD

計算者

精算者

備考

2 19

641-54  
659-112

① X      ② X -- (定数)      ③  $X_{n-1} - X_{n-1}$       ④ Y      ⑤ Y -- (定数)      ⑥  $Y_{n-1} - Y_{n-1}$       ③ × ⑤      ② × ⑥

60	<del>154 149</del> <sup>168</sup> 168	<del>9.188</del> <sup>168</sup> 168	<del>17.365</del> <sup>8</sup> 8	<del>420 333</del> <sup>8</sup> 8	<del>10.333</del> <sup>8</sup> 8	<del>10.926</del> <sup>941</sup> 941	<del>179.4221</del> <sup>4636</sup> 4636	<del>100.4799</del> <sup>39874</sup> 39874
10	<del>154 167</del> <sup>265</sup> 265	<del>27.365</del> <sup>198</sup> 198	<del>18.799</del> <sup>198</sup> 198	<del>433 742</del> <sup>742</sup> 742	<del>13.742</del> <sup>742</sup> 742	<del>4.227</del> <sup>321</sup> 321	<del>249.4421</del> <sup>9669</sup> 9669	<del>134.2847</del> <sup>132.4668</sup> 132.4668
11	<del>154 167</del> <sup>267</sup> 267	<del>27.367</del> <sup>348</sup> 348	<del>17.365</del> <sup>198</sup> 198	<del>424 476</del> <sup>476</sup> 476	<del>5.476</del> <sup>476</sup> 476	<del>10.926</del> <sup>851</sup> 851	<del>96.6000</del> <sup>96.6000</sup> 96.6000	<del>299.2855</del> <sup>1974</sup> 1974
61	<del>154 150</del> <sup>397</sup> 397	<del>10.397</del> <sup>180</sup> 180	<del>18.777</del> <sup>180</sup> 180	<del>422 791</del> <sup>791</sup> 791	<del>2.791</del> <sup>791</sup> 791	<del>4.229</del> <sup>321</sup> 321	<del>50.9275</del> <sup>7680</sup> 7680	<del>49.6040</del> <sup>49.6040</sup> 49.6040

147.76901  
429.4304  
429.9916  
282.0614  
282.0614  
R14

$\frac{1}{2} = 141.4668 m^2$   
- 2.1051  
138.39295

432.0642  
423.1702  
150.7101  
282.0614  
282.0614

641-32  
659-111

45	<del>154 132</del> <sup>110</sup> 110	<del>2.110</del> <sup>567</sup> 567	<del>15.707</del> <sup>567</sup> 567	<del>428 398</del> <sup>398</sup> 398	<del>8.398</del> <sup>398</sup> 398	<del>10.847</del> <sup>398</sup> 398	<del>130.9316</del> <sup>130.9316</sup> 130.9316	<del>22.8071</del> <sup>22.8071</sup> 22.8071
49	<del>154 149</del> <sup>070</sup> 070	<del>19.070</del> <sup>070</sup> 070	<del>18.287</del> <sup>567</sup> 567	<del>430 945</del> <sup>945</sup> 945	<del>10.945</del> <sup>945</sup> 945	<del>5.607</del> <sup>945</sup> 945	<del>200.1512</del> <sup>106.9254</sup> 106.9254	<del>109.0796</del> <sup>109.0796</sup> 109.0796
61	<del>154 150</del> <sup>397</sup> 397	<del>20.397</del> <sup>567</sup> 567	<del>15.509</del> <sup>567</sup> 567	<del>422 791</del> <sup>791</sup> 791	<del>2.791</del> <sup>791</sup> 791	<del>10.847</del> <sup>791</sup> 791	<del>43.5077</del> <sup>4424</sup> 4424	<del>221.2462</del> <sup>221.2462</sup> 221.2462
44	<del>154 132</del> <sup>503</sup> 503	<del>3.503</del> <sup>567</sup> 567	<del>18.287</del> <sup>567</sup> 567	<del>420 098</del> <sup>098</sup> 098	<del>0.098</del> <sup>098</sup> 098	<del>5.607</del> <sup>098</sup> 098	<del>1.7921</del> <sup>1.7921</sup> 1.7921	<del>17.6413</del> <sup>17.6413</sup> 17.6413

2395  
45.2704  
285.6433  
285.7554

330.8828  
327.0508  
142.8216  
 $\frac{1}{2} = 142.8216 m^2$   
43.2035

328.1716  
328.2038  
42.5204  
285.6432  
285.7554

# 面積計算書

工  
区

フ  
ロ  
ック

88

計  
算  
者

精  
算  
者

備  
考

219

659-113

点	①	②	③	④	⑤	⑥	③ × ⑤		② × ⑥	
	X	X - (定数)	X <sub>n-1</sub> - X <sub>n+1</sub>	Y	Y - (定数)	Y <sub>n-1</sub> - Y <sub>n+1</sub>	+	-	+	-
		-154,150.000			-28,410.000					
61	-154 150 397	0.397	+15.458	-35 422 991	12.991	+11.573		198 8872		4.4944
11	-154 167 349	17.349	+17.039	-35 425 494	15.494	+2.250		265 1609		39.0757
17	-154 167 436	17.436	+1.456	-35 425 041	15.041	-8.793		21.2980	13.710	
12	-154 160 983	18.983	-15.629	-35 416 969	6.769	-11.052	105.7791		209.5897	
62	-154 151 809	1.809	-18.986	-35 413 989	3.989	+6.022	73.3417			10.8937
							179.1208	405 2815	360 9044	54 5436
							306.3607	<del>414 3766</del>	<del>369 9525</del>	<del>54 5436</del>
							219	1/2 = 152.6080	21	306.3607
								- 0.0005		<del>305.2160</del>

659-110

		-154,130.000			-28,410.000					
44	-154 133 503	2.503	+15.407	-35 420 090	10.090	+11.557		155.5798		40.4841
61	-154 150 397	20.397	+18.306	-35 422 991	12.991	-6.109		234.1520	6052	124.6057
62	-154 151 809	21.809	-15.407	-35 413 989	3.989	-4.557	61.4585		252.0466	
43	-154 134 990	4.990	-18.306	-35 411 234	1.234	+6.109	22.5896			30.4839
							84.0481	389.7318	376.6518	70.9680
							305.6837	1/2 = 152.8419		305.6838
								46.2306		

# 面積計算書

工  
区

ソ  
ロ  
ク  
ク

AB

計  
算  
者

精  
算  
者

備  
考

659-109

点	①	②	③	④	⑤	⑥	③ × ⑤		② × ⑥	
	X	X - (定数)	X <sub>n-1</sub> - X <sub>n+1</sub>	Y	Y - (定数)	Y <sub>n-1</sub> - Y <sub>n+1</sub>	+	-	+	-
		<del>154.134.990</del>			<del>11.234</del>					
43	-154.134.990	4.990	+15.357	-35.411.234	-11.234	+11.468		172.5206		57.2253
62	-154.151.809	21.809	+18.219	-35.413.989	-13.989	-5.977		254.8655	130.3523	
63	-154.153.209	23.209	-15.257	-35.405.257	6.257	-11.468	80.7317		266.1609	
42	-154.136.452	6.452	-18.219	-35.402.521	2.521	+5.977	45.9300			38.5636
							126.6617	427.3860	296.5131	95.7829
							300.7243	= 150.3621 m <sup>2</sup>		300.7242

659-114

点	①	②	③	④	⑤	⑥	③ × ⑤		② × ⑥	
	X	X - (定数)	X <sub>n-1</sub> - X <sub>n+1</sub>	Y	Y - (定数)	Y <sub>n-1</sub> - Y <sub>n+1</sub>	+	-	+	-
		<del>154.150.000</del>			<del>13.989</del>					
62	-154.151.809	1.809	+15.574	-35.413.989	-13.989	+11.512		27.8646		20.8252
12	-154.168.783	18.783	+18.396	-35.416.787	-16.769	-5.956		208.4825	111.8715	
13	-154.170.205	20.205	-15.574	-35.408.033	8.033	+11.512	125.105.9		232.5999	
63	-154.153.209	3.209	-18.396	-35.405.257	5.257	+5.956	96.7077		20.8252	19.1128
							221.8136	526.3471	344.4714	39.9280
							304.5335	= 152.2667 m <sup>2</sup>		304.5334
								46.0606		

# 面積計算書

工  
区

ブ  
ロ  
ック

88

計  
算  
者

精  
算  
者

備  
考

659-108

点	①	②	③	④	⑤	⑥	③ × ⑤		② × ⑥	
	X	X - (定数)	X <sub>n-1</sub> - X <sub>n+1</sub>	Y	Y - (定数)	Y <sub>n-1</sub> - Y <sub>n+1</sub>	+	-	+	-
		<del>154,170.000</del>			<del>35,390.000</del>					
42	-154 136.452	- 6.452	+ 15.465	-35 402.521	- 12.521	+ 10.435		193.6372		67.2266
63	-154 153.209	- 23.209	+ 17.934	-35 405.257	- 15.257	- 4.607		273.6190	106.9238	
64	-154 154.386	- 24.386	- 15.465	-35 397.714	- 7.714	- 10.435	122.2900		254.4679	
41	-154 137.744	- 7.744	- 17.934	-35 394.822	- 4.822	+ 4.607	86.4777			25.6766
							208.8677	467.2562	261.2917	103.0032
							258.3885	1/2 = 129.1942 m <sup>2</sup>		258.3885
								29.0812		

659-115

		<del>154,150.000</del>			<del>35,390.000</del>					
63	-154 153.209	- 3.209	+ 15.819	-35 405.257	- 15.257	+ 10.119		241.3504		32.4718
13	-154 170.205	- 20.205	+ 18.131	-35 408.032	- 18.032	- 4.193		326.7563	84.7195	
14	-154 171.340	- 21.340	- 15.819	-35 401.064	- 11.064	- 10.119	145.0214		215.9294	
64	-154 154.386	- 4.386	- 18.131	-35 397.914	- 7.914	+ 4.193	143.4887			18.3904
							318.5101	568.3067	300.6589	50.8622
							249.7966	1/2 = 124.8983 m <sup>2</sup>		249.7967
								27.7017		

# 面積計算書

工  
区

フ  
ロ  
ク

AD

計  
算  
者

精  
算  
者

備  
考

点	①	②	③	④	⑤	⑥	③ × ⑤		② × ⑥	
	X	X - (定数)	X <sub>n-1</sub> - X <sub>n</sub>	Y	Y - (定数)	Y <sub>n-1</sub> - Y <sub>n</sub>	+	-	+	-
		<del>154.100.000</del>			<del>-35.270.000</del>					
41	-154 137 744	37.744	+ 33.100	-35 374 822	4.822	+ 9.201		159.6022		347.2825
14	-154 171 340	71.340	+ 34.078	-35 401.064	11.064	+ 2.281		377.0389		234.0665
15	-154 171 822	71.822	- 33.100	-35 378.103	8.103	- 9.201	268.2093		660.8342	
40	-154 138 240	38.240	- 34.078	-35 391 863	1.863	- 3.281	63.4873		125.4654	
							331.6766	<sup>536.</sup> <del>446.6471</del>	786.2996	181.3490
							<sup>204.</sup> <del>246.9505</del>	$\frac{1}{2} = 102.4753 \text{ m}^2$		204.9506
								30.9987		
		<del>154.170.000</del>			<del>-35.280.000</del>					
40	-154 138 240	8.240	+ 15.314	-35 391 863	11.863	+ 10.963		181.6699		90.3351
65	-154 144 875	24.875	+ 17.997	-35 394 754	14.754	- 5.147		269.1271	128.0316	
66	-154 146 237	26.237	- 15.314	-35 386 716	6.716	- 10.963	102.8488		287.6262	
37	-154 139 561	9.561	- 17.997	-35 389 991	2.991	+ 5.147	71.8260			49.2104
							<sup>6748</sup> <del>174.7080</del>	450.7770	415.6678	137.5455
							<sup>1222</sup> <del>276.0480</del>	$\frac{1}{2} = 138.0611 \text{ m}^2$		276.1223
								11.7634		

659-107

# 面積計算書

工  
区

フ  
ロ  
ック

88

計  
算  
者

精  
算  
者

備  
考

点	① X	② X - (定数)	③ X <sub>n-1</sub> - X <sub>n</sub>	④ Y	⑤ Y - (定数)	⑥ Y <sub>n-1</sub> - Y <sub>n</sub>	③ × ⑤ +	⑤ -	② × ⑥ +	⑥ -
659-117		-154,150.000			-35.370.000					
66	-154 156 237	6.237	+ 15.644	-35 386 716	16.716	+ 10.900		261.5051		67.7033
16	-154 173 224	23.224	+ 18.327	-35 389 492	19.492	- 5.470		357.1519	126.1063	
17	-154 174 560	24.560	- 15.644	-35 381 286	11.286	- 10.900	176.5581		267.7040	
67	-154 157 580	7.580	- 18.327	-35 378 592	2.592	+ 5.470	157.4712			41.4794
							333.9893	618.6570	392.8103	109.1427
							284.6677 $\frac{1}{2}$	142.3338 $\frac{1}{2}$		284.6676
								47.0569		
659-105		-154,140.000			-35.360.000					
38	-154 140 911	0.911	+ 15.331	-35 375 747	15.947	+ 10.622		244.4874		9.6766
67	-154 157 580	17.580	+ 17.974	-35 378 592	12.592	- 5.243		334.1726	92.1719	
68	-154 158 885	12.885	- 15.331	-35 370 704	10.704	- 10.622	164.1030		200.5964	
37	-154 142 249	2.249	- 17.974	-35 367 970	7.970	+ 5.243	143.2527			11.7915
							307.3557	578.6560	292.7683	21.4681
							271.7003 $\frac{1}{2}$	135.8501 $\frac{1}{2}$		271.7002
								41.0341		

# 面積計算書

工  
区

フ  
ロ  
ック

88

計  
算  
者

精  
算  
者

備  
考

659-119

点	①	②	③	④	⑤	⑥	③ × ⑤		② × ⑥		
	X	X - (定数)	X <sub>n-1</sub> - X <sub>n-1</sub>	Y	Y - (定数)	Y <sub>n-1</sub> - Y <sub>n-1</sub>	+	-	+	-	
		154,150.000			35,360.000						
68	154 158 885	2.885	+ 15.732	370 704	10.704	+ 10.117		168.4060		89.8895	
18	154 175 830	25.830	+ 18.084	373 489	13.489	- 4.212		243.9350	108.1719	66.6759	
19	154 176 969	26.969	- 15.733	366 492	6.492	- 10.117	102.1386		272.8453		
69	154 160 977	10.977	- 18.084	363 372	3.372	+ 4.212	60.9792			42.5285	
							163.1178	412.3410	381.6412	329.5212	132.4180
							249.2232	124.6116m <sup>2</sup>			249.2232
								37.6950			
		154,140.000			35,350.000						
36	154 143 534	3.534	+ 22.939	360 310	10.310	+ 9.141		329.6010		32.2042	
19	154 176 969	36.969	+ 33.717	366 492	16.492	+ 3.221		559.3591		119.0771	
20	154 177 451	37.451	- 32.939	363 531	13.531	- 9.141	445.6776		242.3395		
35	154 144 030	4.030	- 33.917	357 351	7.351	- 3.221	249.7238		12.9806		
							695.0214	898.9601	355.7201	151.3813	
							203.9387	101.9692m <sup>2</sup>			203.9388
								30.8457			



# 面積計算書

工区 \_\_\_\_\_ プロック \_\_\_\_\_ 計算者 *JA* 精算者 \_\_\_\_\_ 備考 \_\_\_\_\_

点	①	②	③	④	⑤	⑥	③ × ⑤		② × ⑥	
	X	X - (定数)	X <sub>n-1</sub> - X <sub>n</sub>	Y	Y - (定数)	Y <sub>n-1</sub> - Y <sub>n</sub>	+	-	+	-
659-118										
		<i>154,150.000</i>			<i>370.000</i>					
67	154 157 570	7.580	+ 15.675	378 592	2.592	+ 10.582		134.6776		80.2115
17	154 174 560	24.560	+ 18.250	381 286	11.286	- 5.103		205.9695	125.3296	
18	154 175 830	25.830	- 15.675	373 489	3.489	- 10.582	54 6900		273.3330	
68	154 188 885	8.885	- 18.250	370 704	0.704	+ 5.103	12.8480			45.7401
							67.5380	340.6491	398.6626	125.5516
							273.1111	$\frac{1}{2} = 136.5555 \text{ m}^2$		273.1110
								41.7080	↓	
659-104										
		<i>154,140.000</i>			<i>360.000</i>					
27	154 142 249	2.249	- 15.351	367 920	7.990	+ 10.394		122.3474		23.2761
68	154 158 885	18.885	+ 17.848	370 704	10.704	- 4.598		191.0449	86.8332	
69	154 160 097	20.097	- 15.351	363 372	3.372	- 10.394	51.7635		208.8882	
36	154 143 524	3.534	- 17.848	360 310	0.310	+ 4.598	5.5228			16.2493
							17.2963	213.3923	295.7214	396.2544
							256.0960			
							$\frac{256.0960}{2} = 128.0480 \text{ m}^2$			256.0960
								28.7364	↓	

# 面積計算書

工 区  
 フロック  
 計算者  
 精算者  
 備考

659-116

点	① X	② X - (定数)	③ X <sub>n-1</sub> - X <sub>n</sub>	④ Y	⑤ Y - (定数)	⑥ Y <sub>n-1</sub> - Y <sub>n</sub>	③ × ⑤ +	⑤ -	② × ⑥ +	⑥ -
		<del>154.150.000</del>			<del>15.380.000</del>					
65	-154 154 875	4.875	+ 15.585	-35 394 954	14.954	+ 11.387		237.0580		15.5116
16	-154 171 822	2.822	+ 18.349	-35 398 103	18.103	- 5.462		332.1719	119.1719	
16	-154 173 224	23.224	- 15.585	-35 389 492	9.492	- 11.387	147.9328		264.4516	
66	-154 156 237	6.237	- 18.349	-35 386 716	6.716	+ 5.462	123.2318			34.0664
							271.1646	565.2299	383.6433	29.5780
							294.0653	$\frac{1}{2} = 147.0326 \text{ m}^2$		294.0653
								44.4973		

659-106

		<del>154.130.000</del>			<del>13.770.000</del>					
39	-154 139 561	9.561	+ 15.726	-35 383 991	13.721	+ 10.769	<del>214.4260</del>	214.4260		102.9624
66	-154 156 237	26.237	+ 18.019	-35 386 716	16.716	- 5.399		201.2056	141.6535	
67	-154 157 580	27.580	- 15.726	-35 378 592	8.592	- 10.769	131.6809	<del>131.6809</del>	297.2090	
38	-154 140 711	10.711	- 18.019	-35 375 947	5.947	+ 5.399	107.1589			58.9084
							238.8398	515.6316		
							<del>351.5849</del>	<del>422.8845</del>	438.6625	161.8708
							276.7918	$\frac{1}{2} = 138.3958 \text{ m}^2$		276.7917
								41.8647		

# 面積計算書

工  
区

ブロック

88

計算者

精算者

備考

659-120

点	① X	② X - (定数)	③ X <sub>n-1</sub> - X <sub>n</sub>	④ Y	⑤ Y - (定数)	⑥ Y <sub>n-1</sub> - Y <sub>n</sub>	③ × ⑤ +	② × ⑥ +	② × ⑥ -
		-154,160.000			-25,350.000				
73	-154 161 569	1.569	+ 14.778	-25 360 594	10.574	+ 0.225	158.6769		12.7991 13.8519
20	-154 177 451	17.451	+ 16.790	-25 363 531	13.531	- 2.642	227.1854	46.1055	
21	-154 178 359	18.359	- 14.998	-25 357 952	7.952	- 0.225	119.1050	142.1043 162.0244	
74	-154 162 473	2.473	- 16.790	-25 355 246	5.246	+ 2.642	88.0803		6.5336
							207.1853	385.8623	198.2078 208.1899
							178.6770	$\frac{1}{2} = 89.3385$	178.6771

659-121

		-154,160.000			-25,350.000				
74	-154 162 473	2.473	+ 15.302	-25 355 246	5.246	+ 6.158	80.2742		15.2287
21	-154 178 359	18.359	+ 16.458	-25 357 952	7.952	- 0.805	130.8740	14.7789	
22	-154 178 931	18.931	- 15.302	-25 354 441	4.441	- 6.158	67.9561	116.5770	
75	-154 163 057	3.057	- 16.458	-25 351 794	1.794	+ 0.805	29.5256		2.4608
							99.4819	211.1482	131.3559
							113.6665	$\frac{1}{2} = 56.8332$	17.6895
								17.1920	113.6664

# 面積計算書

工区

2

ブロック

28

計算者

125

精算者

備考

102.3.2

	①	②	③	④	⑤	⑥	③	×	⑤	②	×	⑥	
659-120	X	X-(定数)	X <sub>n-1</sub> -X <sub>n+1</sub>	Y	Y-(定数)	Y <sub>n-1</sub> -Y <sub>n+1</sub>	+		-	+		-	
	72-144	162-126=63	12.010	260-908=64	958/1	2.928	282.0675			502.712			
	74-144	164-144=20	14.823	255-603=45	603/1	2.006	224.2032		197.7096				
	21-144	128-159=78	259/1	12.010	257-952=47	952/1	2.928		257.9549			671.2301	
	20-144	177-45=77	45/1	14.823	262-531=63	531/1	2.006	901.7200				222.8177	
								1.724	282.1578	158	497	427.0978	
								156.6248	1/2 = 78.3124			156.6248	
659-121													
	74-144	164-144=20	12.333	255-603=45	603/1	2.006	741.1547			274.1440			
	75-144	165-126=63	14.490	252-146=42	146/1	1.162	745.4545		75.4602				
	22-144	178-131=78	22/1	12.333	254-441=44	441/1	2.006	724.8618				408.2733	
	21-144	178-159=78	259/1	14.490	257-952=47	952/1	2.162	819.7200				91.2521	
								1.581	0.791	1.481	45.73	449.7046	549.2264
								99.6248	1/2 = 49.8124			99.6248	

# 面積計算書

工区 \_\_\_\_\_ ブロック 88. \_\_\_\_\_ 計算者 \_\_\_\_\_ 精算者 \_\_\_\_\_ 備考 \_\_\_\_\_

点	① X	② X - (定数)	③ X <sub>n-1</sub> - X <sub>n</sub>	④ Y	⑤ Y - (定数)	⑥ Y <sub>n-1</sub> - Y <sub>n+1</sub>	③ +	⑤ -	② +	⑥ -
659-122										
75	-154 163 057	3.057	+15.277	-35 351 796	11.794	+ 6.180		180.1718		18.8922
22	-154 178 931	18.931	+16.459	-35 354 441	14.441	- 0.948		237.6844	17.9465	
23	-154 179 516	19.516	-15.277	-35 350 846	10.846	- 6.180	165.6943		120.6088	
76	-154 163 654	3.654	-16.459	-35 348 261	8.261	+ 0.948	135.7677			3.4639
							301.6620	417.8613	138.5553	22.3561
							116.1993 $\frac{1}{2}$	58.0796 m <sup>2</sup>		116.1992
								17.4741		
659-123										
76	-154 163 654	3.654	+15.277	-35 348 261	8.261	+ 6.047		126.2032		22.0957
23	-154 179 516	19.516	+16.405	-35 350 846	10.846	- 0.752		177.9286	14.6760	
24	-154 180 059	20.059	-15.277	-35 347 509	7.507	- 6.047	114.7149		121.2967	
77	-154 164 239	4.239	-16.405	-35 344 779	4.779	+ 0.752	78.7275			3.1577
							193.4424	304.1318	125.9727	25.2834
							110.6894 $\frac{1}{2}$	55.3446 m <sup>2</sup>		110.6893
								16.7417		

# 面積計算書

工区

2

ブロック

88

計算者

児子

精算者

備考

2.43.3.2

	①	②	③	④	⑤	⑥	③ ×	⑤	② ×	⑥
659-122	X	X-(定数)	X <sub>n-1</sub> -X <sub>n+1</sub>	Y	Y-(定数)	Y <sub>n-1</sub> -Y <sub>n+1</sub>	+	-	+	-
	75.754.165.026	-65.026	13.207	75.252.146	-42.146	-4.823	492.9068		229.2966	
	76.754.165.624	-65.624	14.420	76.252.608	-48.608	-1.300		704.2299	25.2112	
	22.754.179.416	-79.416	13.307	22.252.846	-40.846	-5.823	496.6077		463.8188	
	22.754.179.921	-79.921	14.420	22.252.401	-44.401	-1.300	782.8500		102.6108	
							1.482.7588	1,280.9276	464.6078	466.4271
							101.8188	1/2 = 40.9096	101.8193	
659-123										
	76.754.165.624	-65.624	7.14.306	76.252.608	-48.608	-4.705	646.7780		274.3849	
	77.754.166.210	-66.210	14.425	77.252.141	-45.141	-1.099		651.6107	72.7647	
	24.754.180.049	-80.049	13.306	24.252.409	-47.409	-5.705	612.1547		456.7265	
	22.754.179.416	-79.416	13.425	22.252.846	-40.846	-1.099	712.9622		27.2880	
							1,280.7400	1,282.7650	467.1496	468.1246
							96.9750	1/2 = 48.4875	96.9749	

# 面積計算書

工  
区

ブロック

88

計算者

精算者

備考

659-124

点	① X	② X - (定数)	③ X <sub>n-1</sub> - X <sub>n</sub>	④ Y	⑤ Y - (定数)	⑥ Y <sub>n-1</sub> - Y <sub>n+1</sub>	③ × ⑤ +	⑤ -	② × ⑥ +	⑥ -
77	-154 164 239	4.239	+15.255	-35 344 779	4.779	+ 6.054		73.2087		24.6629
24	-154 180 059	20.059	+16.391	-35 347 599	7.599	- 0.795		123.0800		15.9469
25	-154 180 636	20.630	-15.255	-35 344 004	4.004	- 6.054	61.0810		124.8940	
78	-154 164 804	4.804	-16.391	-35 341 455	1.455	+ 0.795	23.8489			2.8191

84.9299 196.2087 140.8409 29.4820  
 $111.3588 \frac{1}{2} = 55.6794 \text{ m}^2$   
 16.8430 ✓

659-125

78	-154 164 804	4.804	+15.232	-35 341 455	11.455	+ 6.066		174.4225		29.1410
25	-154 180 630	20.630	+16.384	-35 344 004	14.004	- 0.877		229.4415		18.0925
26	-154 181 188	21.188	-15.232	-35 340 598	10.598	- 6.066	161.1240		128.5264	
79	-154 165 798	5.398	-16.384	-35 337 938	7.938	+ 0.877	130.0561			4.7240

291.1801 402.9240 146.6189 33.8750  
 $112.7429 \frac{1}{2} = 56.3719 \text{ m}^2$   
 17.0524 ✓

# 面積計算書

工区

2

ブロック

28

計算者

123

精算者

備考

1. 2. 3. 2.

659-124

①	②	③	④	⑤	⑥	③	×	⑤	②	×	⑥
X	X-(定数)	X <sub>n-1</sub> -X <sub>n+1</sub>	Y	Y-(定数)	Y <sub>n-1</sub> -Y <sub>n+1</sub>	+		-	+		-
77-144166270-66	270 <sup>1</sup> -112	270 <sup>1</sup> -112	341-41	141 <sup>1</sup> -41	7161	4996079			2784563		
78-144166776-66	776 <sup>1</sup> +14	420	341-797	41	797 <sup>1</sup> +1	137		6026550	759242		
25-144180670-80	670 <sup>1</sup> +13	283	344006	44	006 <sup>1</sup> +1	7161		484657			4608810
24-144180079-80	079 <sup>1</sup> -14	420	36749	47	49 <sup>1</sup> +1	137		6850729			910276
								12846876	187160	4442806	4419080
								975275	1/2 = 487637		974276

659-125

78-144166776-66	776 <sup>1</sup> -13	281	341-797	41	797 <sup>1</sup> -1	7221	4441153		2827600		
79-144167271-67	271 <sup>1</sup> +14	412	348272	48	272 <sup>1</sup> -1	2151		4444960	818557		
26-144181188-81	188 <sup>1</sup> +13	281	340478	40	478 <sup>1</sup> +1	7221	750005	750005			4467694
25-144180670-80	670 <sup>1</sup> -14	412	344004	44	004 <sup>1</sup> +1	151	6341856				979150
							11881189	10874997	6294745	4646157	4632245
							987192	4607829	1/2 = 4925961		987192



# 面積計算書

工  
区

ブ  
ロ  
ック

24

計  
算  
者

精  
算  
者

備  
考

659-126

	①	②	③	④	⑤	⑥	③	×	⑤	②	×	⑥
	X	X-(定数)	X <sub>n-1</sub> -X <sub>n+1</sub>	Y	Y-(定数)	Y <sub>n-1</sub> -Y <sub>n+1</sub>	+		-	+		-
79	154 165 398	- 65. 398	- 15. 185	37 377 938	- 37. 938	- 6. 221	476. 0888			406. 8409		
80	154 166 003	- 66. 003	+ 16. 374	37 374 347	- 34. 347	- 0. 945		462. 7018		62. 2728		
81	154 181 772	- 81. 772	+ 15. 185	37 386 993	- 36. 993	+ 6. 221		461. 7387				408. 7026
26	154 181 188	- 81. 188	- 16. 374	37 340. 478	- 40. 478	+ 0. 945		464. 4241				36. 7226
							1240. 4126		1124. 3002	469. 2107		488. 4262
							2116. 2124		1/2 = 42. 1062			116. 2124
									17. 5771			

659-127

43. 3.

80	154 166 003	- 66. 003	- 15. 207	37 334 347	- 34. 347	- 4. 946	422. 4668			393. 1138		
79	154 166 465	- 66. 465	+ 14. 343	37 331. 037	- 31. 037	- 1. 058		445. 1676		70. 4247		
38	154 180 346	- 80. 346	+ 15. 434	37 373 299	- 33. 299	+ 4. 460		457. 9267				366. 3777
27	154 181 999	- 81. 999	+ 1. 426	37 387 497	- 37. 497	+ 3. 694		457. 7813				302. 9043
81	154 181 772	- 81. 772	- 15. 996	37 336 993	- 36. 993	- 1. 240	491. 2400			101. 3872		
							1114. 2068		1009. 8616	464. 9267		669. 282
							104. 3452		1/2 = 42. 1726			104. 3452
									15. 7022			

# 面積計算書

工区

2

ブロック

88

計算者

123

精算者

備考

N 40. 3. 2.

659-126

① X      ② X-(定数)      ③  $X_{n-1} - X_{n+1}$       ④ Y      ⑤ Y-(定数)      ⑥  $Y_{n-1} - Y_{n+1}$       ③ × ⑤      ② × ⑥

	X	X-(定数)	$X_{n-1} - X_{n+1}$	Y	Y-(定数)	$Y_{n-1} - Y_{n+1}$	+	-	+	-
	77 754 167 271-67	271 11 12 2111-X 228 272-28	272 11 12 2111-X 228 272-28	272 11 12 2111-X 228 272-28	272 11 12 2111-X 228 272-28	272 11 12 2111-X 228 272-28	405.6113		397.0173	
	80 754 167 277-67	277 11 14 4011-X 224 681-24	277 11 14 4011-X 224 681-24	277 11 14 4011-X 224 681-24	277 11 14 4011-X 224 681-24	277 11 14 4011-X 224 681-24	489.4986		26.9425	
	81 754 181 272-81	272 11 13 2111-X 236 993-26	272 11 13 2111-X 236 993-26	272 11 13 2111-X 236 993-26	272 11 13 2111-X 236 993-26	272 11 13 2111-X 236 993-26	488.7145		481.8023	
	26 754 181 188-81	188 11 14 4011-X 240 478-40	188 11 14 4011-X 240 478-40	188 11 14 4011-X 240 478-40	188 11 14 4011-X 240 478-40	188 11 14 4011-X 240 478-40	484.2637		103.8290	
							1089.2756	288.2121	482.9598	485.7217
							101.7619	1/2 = 40.8809		101.7619

659-127

	X	X-(定数)	$X_{n-1} - X_{n+1}$	Y	Y-(定数)	$Y_{n-1} - Y_{n+1}$	+	-	+	-
	80 754 167 277-67	277 11 12 223 -X 224 681-24	277 11 12 223 -X 224 681-24	277 11 12 223 -X 224 681-24	277 11 12 223 -X 224 681-24	277 11 12 223 -X 224 681-24	458.9866		282.1464	
	27 754 168 439-68	439 11 12 269 -X 231 261-21	439 11 12 269 -X 231 261-21	439 11 12 269 -X 231 261-21	439 11 12 269 -X 231 261-21	439 11 12 269 -X 231 261-21	387.90502		96.9950	
	28 754 180 246-80	246 11 13 460 -X 233 299-21	246 11 13 460 -X 233 299-21	246 11 13 460 -X 233 299-21	246 11 13 460 -X 233 299-21	246 11 13 460 -X 233 299-21	448.2045		240.2456	
	27 754 181 999-81	999 11 1 426 -X 235 497-25	999 11 1 426 -X 235 497-25	999 11 1 426 -X 235 497-25	999 11 1 426 -X 235 497-25	999 11 1 426 -X 235 497-25	40.7613		202.9042	
	81 754 181 272-81	272 11 14 022 -X 236 993-26	272 11 14 022 -X 236 993-26	272 11 14 022 -X 236 993-26	272 11 14 022 -X 236 993-26	272 11 14 022 -X 236 993-26	418.7158		76.4760	
							972.7029	886.8700	452.4150	640.2497
							90.8229	1/2 = 45.4112		90.8229

# 面積計算書

工区

ブロック

AP

計算者

精算者

備考

659-100  
659-101

	①	②	③	④	⑤	⑥	③	×	⑤	②	×	⑥
	X	X - (定数)	X <sub>n-1</sub> - X <sub>n</sub>	Y	Y - (定数)	Y <sub>n-1</sub> - Y <sub>n</sub>	+		-	+		-
		-154,140.000			-15,320.000							
33	-154 146 462	- 6.462	+ 13.495	-35 342 854	- 22.854	+ 15.372			308.4147			79.3338
72	-154 162 095	- 22.095	+ 18.130	-35 346 486	- 25.486	- 12.141			262.0611	268.2553		
30	-154 166 592	- 24.592	- 11.190	-35 330 713	- 10.713	- 17.668	119.0784			418.5558		
21	-154 150 905	- 10.905	- 15.992	-35 328 466	- 8.466	- 0.599	135.3882			434.4914		
32	-154 148 600	- 8.600	+ 4.443	-35 330 114	- 10.114	- 14.888	78.0254			6.5320		123.7368
							44.9365					129.7096
							300.503403					223.0706
							229.5443	770.4958	673.3431	209.7989		228.64246
							470.272754		235.513			490.2725
							480.6775	1/2 = 240.33875				480.6257
								235.1362 m <sup>2</sup>				
								71.1287				
		-154,150.000			-15,320.000							
70	-154 159 603	- 9.603	- 3.943	-35 360 231	- 30.231	+ 29.887	91.3883					286.9472
73	-154 161 569	- 11.569	+ 6.966	-35 360 594	- 30.594	- 29.194			212.9954			
29	-154 166 565	- 16.565	+ 7.027	-35 331 037	- 1.037	- 29.881			213.478	337.7453		
30	-154 164 592	- 14.592	- 6.966	-35 330 713	- 0.713	+ 29.194	9639		3.1348	494.9787		
							4.9669					425.9988
							96.3522		216.1302			
							96.2550		216.2556	832.7240		712.9460
							149.8976					
							119.2780	1/2 = 59.8890 m <sup>2</sup>				119.7780
								18.1164				

2,  
3,  
43.

18.1164

# 面積計算書

工区

2

ブロック

28

計算者

123

精算者

備考

N 02. 2-2

659-100  
659-101

①

②

③

④

⑤

⑥

③

×

⑤

②

×

⑥

X

X-(定数)

X<sub>n-1</sub>-X<sub>n+1</sub>

Y

Y-(定数)

Y<sub>n-1</sub>-Y<sub>n+1</sub>

+

-

+

-

25	154	126	462	-46	462	15	462	75	342	854	-42	854	15	734	662.608		731.023		
22	154	128	600	-48	600	14	452	75	330	114	-30	114	14	388		122.7662	699.2568		
21	154	150	905	-50	905	17	866	75	328	466	-28	466	17	923	611.4201		46.9843		
20	154	166	667	-66	667	13	157	75	221	027	-21	027	17	382	408.2848		408.4158	1157.0502	
72	154	166	067	-66	067	20	108	75	346	848	-46	848	11	817	241.7281		247.0206	757.0224	
															1.54.3366	1.053.5712		1.961.0551	
															<del>1.54.3366</del>	<del>1.053.5712</del>		<del>1.961.0551</del>	
															530.7654	265.3827		530.7652	
															<del>530.7654</del>	<del>265.3827</del>		<del>530.7652</del>	
70	154	161	590	-61	590	13	030	75	360	590	-60	590	13	921		182.6998	842.2060		
70	154	166	466	-66	466	16	970	75	221	027	-21	027	17	233	216.3278		206.2768	1945.9238	
29	154	168	539	-68	539	13	030	75	311	361	-21	361	17	921	65.0238			2,050.7044	
71	154	162	576	-62	576	16	970	75	260	948	-60	948	17	233	624.8772		624.8772	1,057.3076	
															519.2010	399.9274		1.788.1298	
															<del>519.2010</del>	<del>399.9274</del>		<del>1.788.1298</del>	
															119.2730	49.9867		119.2730	
															<del>119.2730</del>	<del>49.9867</del>		<del>119.2730</del>	



# 面積計算書

工区 2      ブロック 88      計算者 児子      精算者      備考 43. 3. 2.

659-103	①	②	③	④	⑤	⑥	③	×	⑤	②	×	⑥
	X	X-(定数)	X <sub>n-1</sub> -X <sub>n+1</sub>	Y	Y-(定数)	Y <sub>n-1</sub> -Y <sub>n+1</sub>	+		-	+		-
	24.744.144.020	-44.020	16.302	75.357.241	-47.241	10.622	934.8786			467.6866		
	34.754.144.268	-44.268	18.809	75.348.872	-48.872	4.270		919.9233	193.2943			
	71.754.162.62	-62.62	16.302	75.253.081	-43.081	10.622		865.2733		667.4758		
	72.754.161.570	-61.570	18.809	75.260.594	-40.594	4.270	1119.7125			262.8996		
							2074.4911	1805.1966	660.9809	930.2754		
							269.2945	1/2 = 134.6472		269.2945		

659-102	①	②	③	④	⑤	⑥	③	×	⑤	②	×	⑥
	X	X-(定数)	X <sub>n-1</sub> -X <sub>n+1</sub>	Y	Y-(定数)	Y <sub>n-1</sub> -Y <sub>n+1</sub>	+		-	+		-
	24.744.144.268	-44.268	16.302	75.348.872	-48.872	10.227	818.3910			462.9558		
	21.744.144.462	-46.462	18.798	75.342.854	-42.854	4.124		805.2980	191.6092			
	72.754.164.062	-64.062	16.302	75.264.288	-44.288	10.227		950.2526		655.1620		
	71.754.162.62	-62.62	18.798	75.253.081	-43.081	4.124	997.6043			259.1480		
							1815.9949	556.2106	156.4650	914.3100		
							259.7457	1/2 = 129.8728		259.7457		