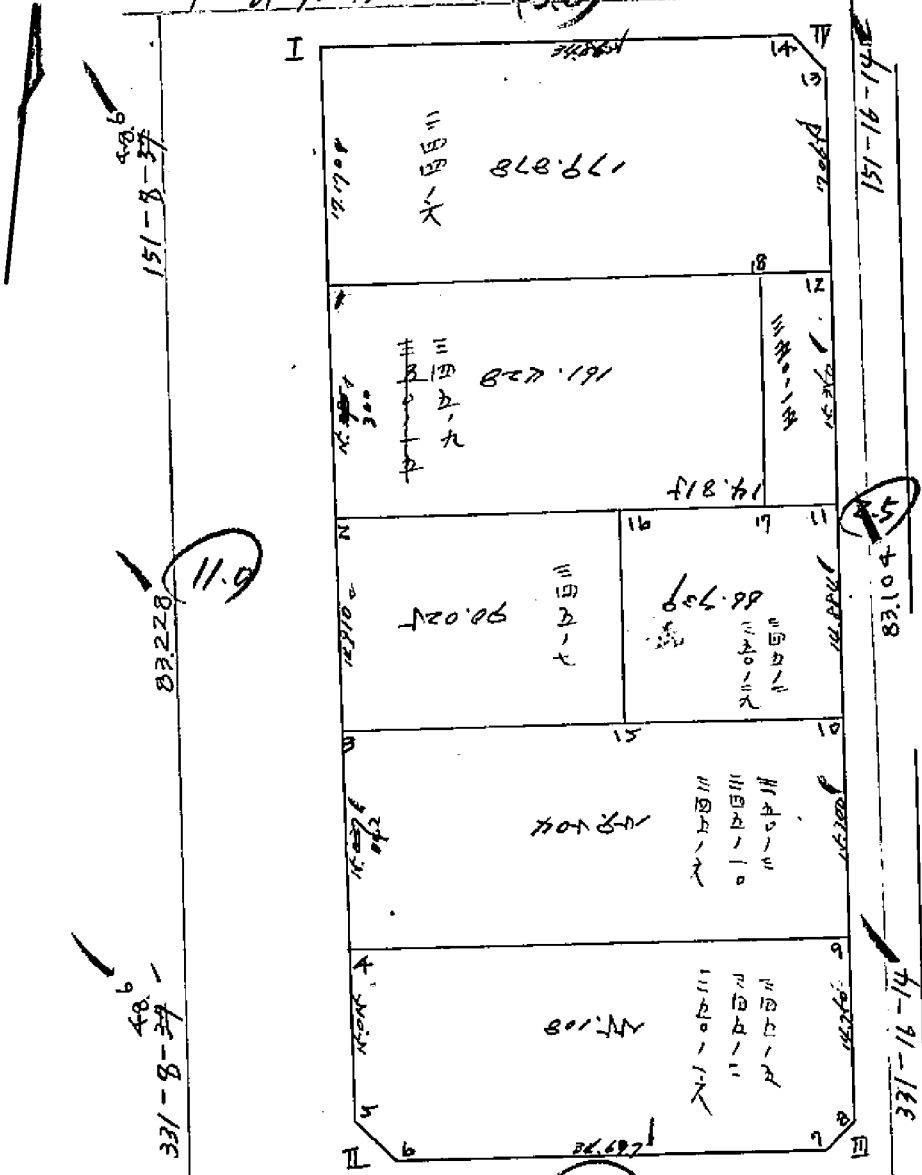


C-84 61-16-15 48.216 3.0 241-16-15 C-86



C-83 61-8-34 48.6 241-8-34 2.25 48.196 241-8-34 2.25 25.6

面積計算書

工
区

ブ
ロ
ック

計
算
者

精
算
者

備
考

点

①

②

③

④

⑤

⑥

③

×

⑤

②

×

⑥

X

X-(定数)

X_{n-1}-X_n

Y

Y-(定数)

Y_{n-1}-Y_n

+

-

+

-

345-7

153 940 000

135 600 000

3	-153 964 594	- 27.594	+ 3.430	-153 641 330	- 41.330	- 24.668						
15	-153 954 963	- 14.963	- 22.695	-153 623 858	- 23.858	- 10.312	✓ 581.9573			✓ 159.2984		
16	-153 941 899	- 1.899	- 3.430	-153 631 018	- 31.018	+ 24.668	✓ 106.3917					✓ 46.8445
2	753 951 533	- 11.533	+ 22.695	-153 648 526	- 48.526	+ 10.312		✓ 1101.2975				✓ 118.9282

647.8490
595.2104
1243.0594
760.9831
165.7727
598.2104
90.025坪

1/2 = 297.6052

345-2
350-29

153 930 000

135 610 000

15	-153 954 963	- 24.963	+ 5.912	-153 623 858	- 13.858	- 20.135						
10	-153 947 811	- 17.811	- 20.206	-153 610 883	- 0.883	- 5.820	✓ 17.8418			✓ 103.6600		
11	-153 934 757	- 4.757	- 5.912	-153 618 038	- 2.038	+ 20.135	✓ 47.5206					✓ 95.7821
16	-153 941 299	- 11.299	+ 20.206	-153 631 018	- 21.018	+ 5.820		✓ 424.6897				✓ 69.2521

65.3624
441.2557
506.6181
606.2900
165.0342
441.2558
66.739坪

1/2 = 220.6278

面積計算書

工区

ブロック

計算者

積算者

備考

点	① X	② X-(定数)	③ $X_{n-1}-X_n$	④ Y	⑤ Y-(定数)	⑥ $Y_{n-1}-Y_n$	③ × ⑤	② × ⑥
		153 900 000			35 600 000			
3	153 964 594	- 64.594	- 3.722	35 641 330	- 41.330	- 37.643	153.8302	2431.5119
10	153 947 811	- 47.811	- 29.837	35 610 883	- 10.823	- 23.292	324.7160	1113.6138
11	153 974 757	- 34.757	+ 3.722	35 618 038	- 18.038	+ 37.643	67.1379	1308.3577
2	153 951 533	- 51.533	+ 29.837	35 648 526	- 48.526	+ 23.292	1447.8702	1200.3066
							478.5462	1515.0076
							1036.4614	$\frac{1}{2} = 518.2307$
								3545.1257
								2508.6643
								1036.4614
		153 900 000			35 600 000			
2	153 951 533	- 51.533	- 3.373	35 648 526	- 48.526	- 37.873	163.6781	1951.7093
11	153 974 757	- 34.757	- 30.239	35 618 038	- 18.038	- 23.108	545.4510	803.1647
12	153 921 294	- 21.294	+ 3.373	35 625 418	- 25.418	+ 37.873	85.7349	806.4676
1	153 938 130	- 38.130	+ 30.239	35 655 911	- 55.911	+ 23.108	1690.6927	881.1080
							709.1291	1776.4276
							1067.2988	2754.8740
							$\frac{1}{2} = 533.6492$	1687.5756
								1067.2988

345-9
350-15

分筆後の座標なし

161.428坪

面積計算書

工区

ブロック

計算者

精算者

備考

344-6

点	①	②	③	④	⑤	⑥	③ × ⑤		② × ⑥	
	X	X-(定数)	X _{n-1} -X _n	Y	Y-(定数)	Y _{n-1} -Y _n	+	-	+	-
		153 900 000			35 600 000					
1	-153 938 130	-38.130	1.795	-35 655 911	-35.911	38.780	✓ 100.3602		✓ 1978.6814	
12	-153 921 294	-21.294	30.048	-35 625 418	-25.418	23.251	✓ 763.7600		✓ 995.1067	
13	-153 908 082	-8.082	14.005	-35 632 660	-32.660	9.957	✓ 957.4033		✓ 80.4724	
14	-153 907 289	-7.289	15.007	-35 635 375	-35.375	31.538	✓ 530.8726		✓ 229.8804	
I	-153 923 089	-23.089	30.841	-35 664 198	-64.198	20.536	✓ 1979.9305		✓ 974.1557	
							1321.5235	2510.8031	1973.7821	784.5085
							118.2796	1/2 = 594.6398		1189.2796
									179.878	坪
		153 900 000			35 600 000					
II	-153 990 924	-90.924	0.786	-35 626 823	-26.823	2.716		✓ 21.0828	✓ 246.9495	
6	-153 989 958	-89.958	1.752	-35 625 072	-25.072	0.965	✓ 43.9261		✓ 86.8094	
5	-153 989 172	-89.172	0.966	-35 627 788	-27.788	1.751	✓ 26.8432		✓ 156.1401	
							43.9261	47.9260	246.9495	242.9495
							3.99991	1/2 = 2.000	1.6050	4.0000

面積計算書

工区: _____ ブロック: _____ 計算者: _____ 精算者: _____ 備考: _____

点	①	②	③	④	⑤	⑥	③ × ⑤		② × ⑥	
	X	X-(定数)	$X_{n-1} - X_n$	Y	Y-(定数)	$Y_{n-1} - Y_n$	+	-	+	-
		153 940 000			35 590 000					
Ⅲ	-153 974 166	- 4.166	- 2.720	-35 596 436	- 6.436	- 0.789	✓ 17.5059		✓ 3.2869	
8	-153 972 412	- 2.912	+ 0.966	-35 597 398	- 7.398	+ 1.751		✓ 7.1464		✓ 4.2234
7	-153 975 132	- 5.132	+ 1.754	-35 598 187	- 8.187	- 0.962		✓ 14.3599	✓ 4.9369	
							17.5059	21.5063	8.2238	4.2234
							4.0004	1/2 = 2.0002		4.0004
								0.6050		
		153 900 000			25 630 000					
Ⅳ	-153 906 328	- 6.328	- 0.793	-35 633 621	- 3.621	+ 2.715	✓ 2.8714			✓ 17.1805
14	-153 907 289	- 7.289	+ 1.754	-35 635 375	- 5.375	- 0.961		✓ 9.4277	✓ 7.0047	
13	-153 908 082	- 8.082	- 0.961	-35 632 660	- 2.660	- 1.754	✓ 2.5562		✓ 14.1758	
							5.4276	9.4277	21.1805	17.1805
							4.0001	1/2 = 2.0000		4.0001
								0.6050		