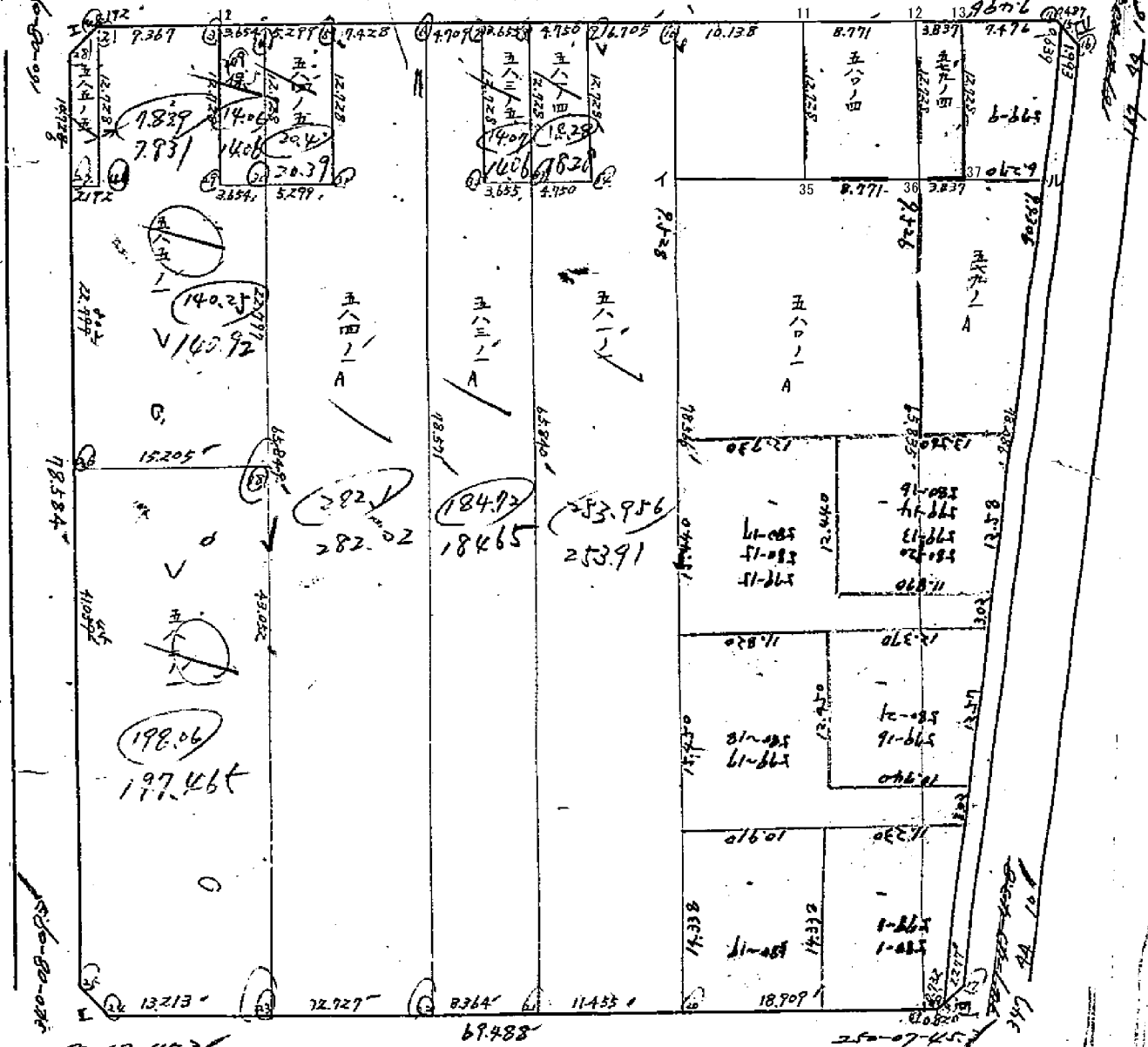


C-263 70 9 50

250 7 58-264

76.001

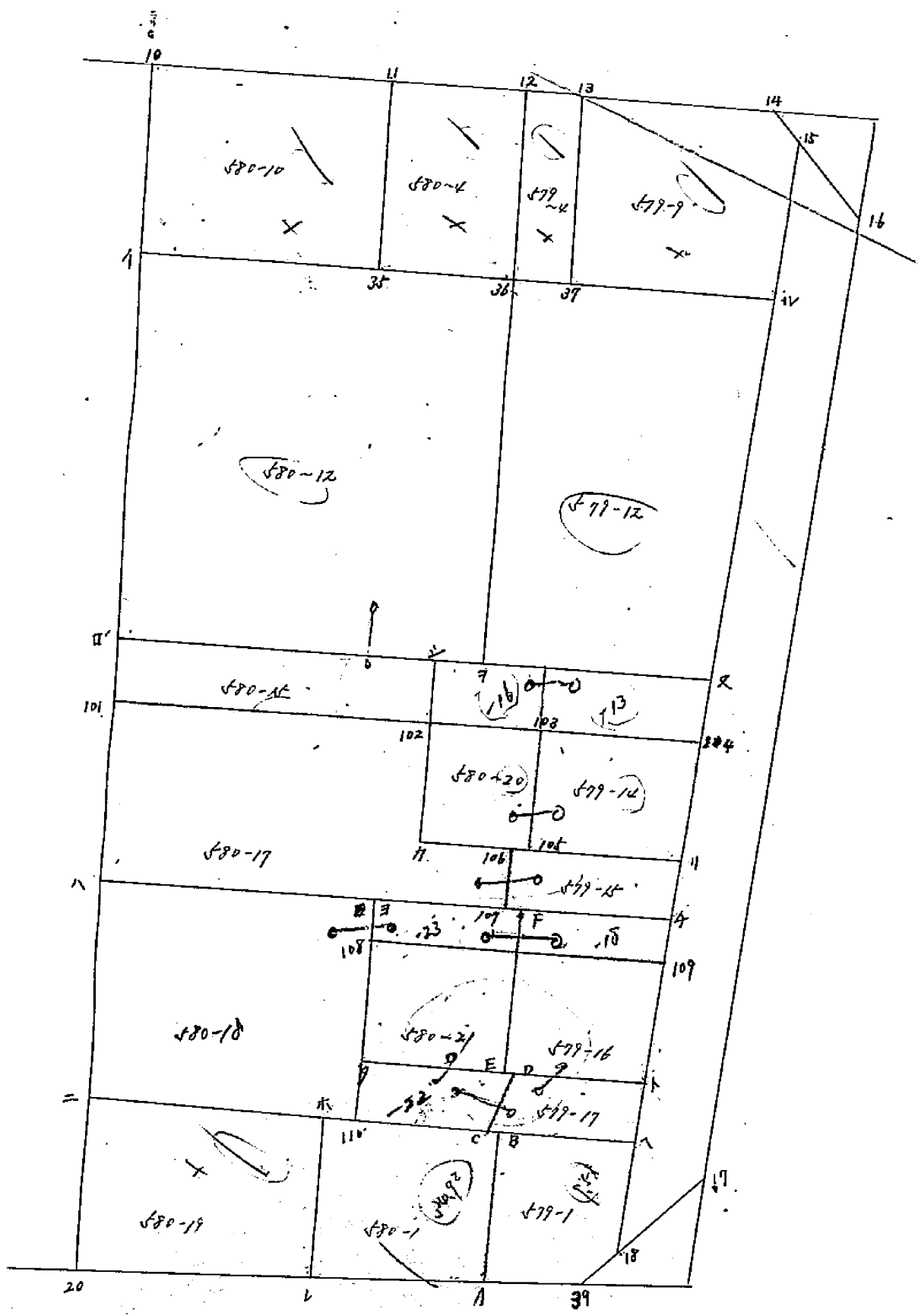


C-274

C-275



1000



面積計算書

工
区

ブ
ロ
ック

140

計
算
者

0

精
算
者

備
考

585-1

点	① X	② X-(定数)	③ X _{n-1} -X _{n+1}	④ Y	⑤ Y-(定数)	⑥ Y _{n-1} -Y _{n+1}	③ +	×	⑤ -	② +	×	⑥ -
		154.310.000			34.740.000							
2	154.319.699	9.699	+ 15.150	34.772.739	32.739	+ 4.983			- 495.9958			- 73.9806
41	154.331.666	21.666	+ 12.712	34.768.415	28.415	- 2.262			- 361.2119			- 99.0084
27	154.322.411	22.411	+ 22.187	34.770.477	30.477	- 5.686			- 676.1931			- 127.4289
26	154.353.853	43.853	+ 16.268	34.762.729	22.729	- 22.051			- 369.7553			- 969.0025
38	154.348.679	38.679	- 26.610	34.748.426	8.426	- 6.557			- 224.2158			- 253.6182
30	154.327.243	17.243	- 20.194	34.756.172	16.172	+ 11.182			- 326.5793			- 192.8112
29	154.328.485	18.485	- 10.727	34.758.608	19.608	+ 7.760			- 210.3350			- 143.9436
3	154.316.516	6.516	- 8.786	34.763.972	23.972	+ 13.131			- 210.2665			- 85.5615
							991.3996	1903.1556	1397.0580	465.2969		
							931.7610	1/2 = 465.8805	140.9288	931.7611		

面積計算書

工
区

ブ
ロ
ック

143

計
算
者

精
算
者

備
考

保209

点	① X	② X-(定数)	③ X _{n-1} -X _{n+1}	④ Y	⑤ Y-(定数)	⑥ Y _{n-1} -Y _{n+1}	③ +	⑤ -	② +	⑥ -
		154 314			34 7.50					
3	154 316 516	- 6.516	+ 13.210	34 763 932	- 13.932	- 0.899		182.0417	5.7927	
29	154 328 485	- 18.485	+ 10.727	34 759 608	- 9.608	- 7.760		103.0650	143.6436	
30	154 327 243	- 17.243	- 13.210	34 758 172	- 6.172	+ 0.889	81.5321			15.3290
44	154 315 275	- 5.275	- 10.727	34 760 697	- 10.497	+ 7.760	112.6013			40.9240
							194.1334	287.1067	149.2363	56.2630
							92.9733	1/2 = 46.4866	92.9733	

585-5

点	① X	② X-(定数)	③ X _{n-1} -X _{n+1}	④ Y	⑤ Y-(定数)	⑥ Y _{n-1} -Y _{n+1}	③ +	⑤ -	② +	⑥ -	
		154 314			34 7.50						
40	154 319 744	- 9.764	+ 2.626	34 772 919	- 12.919	+ 1.381		33.9252		13.4841	
28	154 322 325	- 12.325	+ 12.647	34 774 120	- 14.120	- 2.442		178.1756	20.0977		
27	154 332 411	- 22.411	+ 9.341	34 770 477	- 10.477	- 5.705		97.8657	127.8568		
41	154 331 666	- 21.666	- 12.712	34 768 415	- 8.415	+ 2.262	106.9715			69.0085	
2	154 319 699	- 7.699	- 11.902	34 772 739	- 12.739	+ 4.504	151.6196			43.6843	
							258.5911	3665	310.1448	157.9525	106.1769
							7754	1/2 = 25.8877	81.9756		
									7.83/0		

面積計算書

工
区

フ
ロ
ック

143

計
算
者

精
算
者

備
考

点	①	②	③	④	⑤	⑥	③ × ⑤		② × ⑥	
	X	X-(定数)	X _{n-1} -X _{n+1}	Y	Y-(定数)	Y _{n-1} -Y _{n+1}	+	-	+	-
584-5										
4	114 315 275	- 5.275	+ 17.769	34 760 497	- 10.497	+ 0.659		144.5226		7.4657
30	114 327 243	- 17.243	+ 10.167	34 756 172	- 6.172	- 9.309		62.7507	160.5151	
31	114 325 442	- 15.442	- 13.769	34 751 188	- 1.188	- 0.659	16.3563		10.1454	
5	114 313 474	- 3.474	- 10.167	34 755 515	- 5.515	+ 9.309	56.0710			22.3487
							72.4273	207.2233	170.6605	35.8144
							134.8460	42 = 67.4275	22.3954	134.8460
584-1										
5	114 313 474	- 3.474	+ 14.491	34 755 515	- 35.515	+ 2.656		514.6478		9.2296
31	114 325 442	- 15.442	+ 13.969	34 751 188	- 31.188	+ 0.659		429.3963		10.1453
30	114 327 243	- 17.243	+ 63.719	34 756 172	- 36.172	- 17.392		2304.8436	2998902	2998902
23	114 389 161	- 19.161	+ 57.592	34 733 798	- 13.998	- 34.347		794.5392	27189128	27189128
22	114 384 835	- 74.835	- 78.210	34 721 835	- 1.825	+ 14.736	142.7332			1102.7685
6	114 310 951	- 0.951	- 71.360	34 748 532	- 28.532	+ 33.690	2076.0635			22.0291
							2128.2267	4043.4269	3018.8370	1154.5825
							1864.6502	1/2 = 932.325		1864.6502

面積計算書

工
区

フ
ロ
ック

143

計
算
者

精
算
者

備
考

583-1A

583-5

点	①	②	③	④	⑤	⑥	③ × ⑤		② × ⑥	
	X	X-(定数)	X _{n-1} -X _n	Y	Y-(定数)	Y _{n-1} -Y _n	+	-	+	-
		154 310			24 700					
6	-154 310 951	- 10.951	+ 75.984	-24 748 532	- 48.532	- 23.280			273.9884	
22	-154 384 835	- 84.835	+ 71.041	-24 721 825	- 21.825	- 39.572			273.9884	
21	-154 381 992	- 81.992	- 69.757	-24 713 960	- 13.960	+ 14.516	904.0077			1190.2778
33	-154 320 078	- 20.078	- 60.672	-24 736 342	- 36.342	+ 25.819	2206.9618			518.3939
32	-154 321 320	- 21.320	- 10.727	-24 739 779	- 39.779	+ 7.763	426.7093			165.5072
7	-154 309 351	- 9.351	- 10.369	-24 744 105	- 44.105	+ 8.753	457.3247			81.8493
							3992.9835	5213.8593	3176.9038	1956.0282
							1220.8758	2213.9304	3776.8977	1775.9763
							1220.9869	610.9278	1846574	1220.8758
								8.3224		
7	-154 309 351	- 9.351	+ 13.211	-24 744 105	- 14.105	- 0.890		186.3411	2.3873	
32	-154 321 320	- 21.320	+ 10.727	-24 739 779	- 9.779	- 7.763		104.8993	165.5072	
33	-154 320 078	- 20.078	- 13.211	-24 736 342	- 6.342	+ 0.890	83.7842			17.8694
8	-154 308 109	- 8.109	- 10.327	-24 740 669	- 10.669	+ 7.763	114.4464			62.9502
							198.2306	291.2404	173.8296	80.8196
							93.0098	1/2 = 146.5049	✓	93.0100
								14.0677		

面積計算書

工
区

ブ
ロ
ック

143

計
算
者

精
算
者

備
考

点	①	②	③	④	⑤	⑥	③ × ⑤		② × ⑥	
	X	X-(定数)	X _{n-1} -X _{n+1}	Y	Y-(定数)	Y _{n-1} -Y _{n+1}	+	-	+	-
581-4		154 300			24 730					
8	154 308 109	- 8.109	+ 13.58 ²	-34 740 669	- 10.669	+ 0.139		199 9063		1.1271
33	154 320 078	- 20.078	+ 10.85 ³	-34 736 342	- 6.342	- 8.794		65.6714	176.5659	
34	154 318 464	- 18.464	- 13.58 ²	-34 731 875	- 1.875	- 0.139	25.4662		2.5664	
9	154 306 495	- 6.495	- 10.85 ³	-34 736 203	- 6.203	+ 8.794	64.2320			59.1258
							89.6982	210.5977	199.1323	58.2529
							120.8795	1/2 = 60.4397 ✓		120.8794
581-1		154 300			24 730					
9	154 306 495 ^b	- 6.495 ^b	+ 14.24 ^b	-34 736 203	- 36.203	+ 1.976		7479 15.784	18.2830	83.60 12.83
34	154 318 464	- 18.464	+ 13.58 ²	-34 731 875	- 31.875	+ 0.139		9262 432.8		2.5665
33	154 320 078	- 20.078	+ 63.528	-34 736 342	- 36.342	- 17.915		2308.7346	319.6974	
21	154 381 992	- 81.992	+ 58.020	-34 713 960	- 13.960	- 33.156		809.9592	2718.5268	
20	154 378 098	- 78.098	- 77.97 ⁴	-34 703 186	- 3.186	+ 15.939	7879 247.797			1244.8040
10	154 304 218	- 4.21 ⁸	- 71.60 ⁷	-34 729 899	- 29.899	+ 33.017	4281 2140.8787			2657 129.2377
							2388.6160	4067.3679	3078.2242	1399.4722
							2388.6160	4067.3679	3078.2242	1399.4722
							1499.9218	1/2 = 859.9609 ✓		1678.7519
							1678.7519	1/2 = 839.3759 ✓		1678.7520

253.9112

面積計算書

工
区

ブ
ロ
ック

143

計
算
者

精
算
者

備
考

580-12

580-4

点	①	②	③	④	⑤	⑥	③ × ⑤		② × ⑥			
	X	X-(定数)	X _{n-1} -X _{n+1}	Y	Y-(定数)	Y _{n-1} -Y _{n+1}	+	-	+	-		
		-154300000			-34600000							
10	154304218	4218	77325	34729899	129899	17182		100449901	72.4736			
20	154378098	78098	67454	34703186	103186	44897		6960.3089	3475.1267			
19	154371671	71671	68336	34685402	85402	4607				330.1882		
36	154309762	9762	58928	34707793	107793	30640		6352.0259		299.1076		
35	154312743	12743	8989	34716042	116042	12575		1093.1015		160.2432		
11	154300773	0773	8528	34720368	120368	13857		1026.2722		10.7114		
		58072 各地		1840.1335	-1450.8754			389.2581	14257.2786	17004.6453	2547.6000	800.2504
		-154200000			-34700000				2747.3497	1/2 1372.6748		2747.3497
11	154300773	100773	16950	34720368	20368	3920		304.50161		395.0301		395.0301
35	154312743	112743	8989	34716042	16042	12575		149.2015	1417.7432	191.7993		191.7993
36	154309762	109762	16950	34707793	7793	3920		116.5083		430.2670		430.2670
12	154297793	97793	8989	34712122	12122	12575		108.9646		93.0267		1229.7469
								225.4699	448.7031	1848.010R		1624.7771
								223.2325	1/2 111.6166			223.2331
										337640		

面積計算書

工区

ブロック

143

計算者

精算者

備考

579-4

点	① X	② X-(定数)	③ X _{n-1} -X _{n+1}	④ Y	⑤ Y-(定数)	⑥ Y _{n-1} -Y _{n+1}	③ +	⑤ -	② +	⑥ -
		-14200000		-32750000						
12	-14297793	-97793	13 273-34712122	-12122	-0.721		160.8953	70.5088		
36	-14309762	-109762	10 665-34707793	-7793	-7.938		16.2895	9.0508		
37	-14308458	-108458	13 273-34704184	-4184	+0.721	55.5342	83.1123	871.2908		78.1982
13	-14296489	-96489	10 665-34708514	-8514	+7.938	90.8018	8.3112	89.121		7.0198
										765.9297
							166.3360	264.0076	961.7996	844.1279
							97.6716	1/2 = 48.8358	14.7728	97.6717
		-14200000		-32600000						
13	-14296489	-96489	16 515-34708514	-108514	+2.727		1575.0807			262.1606
37	-14308458	-108458	13 273-34704184	-104184	-0.721		159.5080			26.2160
36	-14309762	-109762	63 213-34707793	-107793	-18.782		1382.8342	78.1982		
19	-14371671	-171671	61 630-34685402	-85402	-23.162		138.2837	9.8198		
39	-14371397	-171397	0 921-34684631	-84631	-1.126		6813.9189	2061.5499		
18	-14370750	-170750	77 139-34684276	-84276	+16.274		681.3918	206.1599		
15	-14296253	-96253	76 807-34700905	-100905	+17.191		5267.2257	5976.2037		
14	-14293943	-93943	2 236-34701467	-101467	+7.609		526.3327	397.6273		
							77.9451	192.9874		
							6500.8662	19.2989		2778.7803
							570.4966			297.8785
							7750.2103			1620.3033
							743.0210			+62.0703
								226.8802		714.8123
								22.8880		71.4812
							14329.1218	15262.0393	1208.9792	5376.0617
							706.0373	1/2 = 466.4587	26.7932	932.9175
							932.9175			

706.0373 1/2 = 466.4587 26.7932 932.9175

面積計算書

工
区

ブ
ロ
ック

123

計
算
者

精
算
者

備
考

点	①	②	③	④	⑤	⑥	③ × ⑤		② × ⑥	
	X	X-(定数)	X _{n-1} -X _{n+1}	Y	Y-(定数)	Y _{n-1} -Y _{n+1}	+	-	+	-
		114200000			34600000					
15	114294253	96253	75.533 74.505	34700905 34684276	100905	16885	7621.6573		1402.9559	
18	114370750	170750	75.533 74.505	34684276 34683175	84276	17730	6298.9833		3029.3995	
17	114368758	168758	75.533 74.505	34683175 34689161	83175	14885		6282.4572		2511.9628
16	114295217	95217	75.533 74.505	34689161 34770000	99161	17730		7387.9903		1688.1994
							13900.6406	13670.4425	4430.7544	4200.1602
							230.1931	$\frac{1}{2} = 115.0965 \text{ m}^2$		230.2228
		114300500			34770000				34.8166	
I	114320444	20444	2561	34774800	4800	1201		12.2928		24.5532
20	114322325	22325	0680	34774120	4120	1881	2.8016	+2292	41.9933	2.1555
40	114319764	19764	1881	34772919	2919	0680	5.4906	2.4906 2.549	41.9933	13.4395
							8.2922			13.3429
							2.8016	12.2928	41.9933	37.9927
							6.0006	$\frac{1}{2} = 2.0003$		6.0001
									0.6050	

面積計算書

工
区

ブ
ロ
ック

143

計
算
者

精
算
者

備
考

点	①	②	③	④	⑤	⑥	③ × ⑤		② × ⑥	
	X	X-(定数)	X _{n-1} -X _{n+1}	Y	Y-(定数)	Y _{n-1} -Y _{n+1}	+	-	+	-
		-154390000			-34760000					
II	-154394372	- 4332	+ 1201	-34748105	- 8105	- 2561	11.7073	9.7341 0.9974	11.0942 +11.094	0.2483 2.4834
	24-154393652	- 3652	- 1881	-34746224	- 6224	+ 0680	11.7073	1.9738 0.9993		0.2483 4.6103 0.4610
	25-154392451	- 2451	+ 0680	-34748785	- 8285	+ 1881				
							11.7073	11.7079	11.0942	7.0937
							4.0006	1/2 = 20003 m ²		4.0005
III	-154370712	- 10712	- 2634	-34688750	- 2750	- 1456	7.2435		0.6050 15.5917	
	17-154368758	- 8758	+ 0680	-34683175	- 3175	+ 1881		2.1590		16.4738
	39-154371392	- 11392	+ 1954	-34684631	- 4631	- 0425		9.0490	6.8416	
							7.2435	11.2080	20.4383	16.4738
							3.9645	1/2 = 19822 m ²		3.9645
IV	-154293263	- 3263	+ 1274	-34699586	- 9586	- 2306		12.2128	0.5196 7.1245	
	16-154295217	- 5217	+ 0680	-34699161	- 9161	+ 1881		6.2295		9.8132
	14-154293943	- 3943	- 1954	-34701467	- 11467	+ 0425	22.4065			1.6757
							22.4065	78.4426	7.5245	11.4880
							3.9645	1/2 = 19822 m ²		3.9645
								0.5996		

面積計算書

区

ブロック

143

計算者

精算者

備考

579-9

点	① X	② X-(定数)	③ X _{n-1}-X_n}	④ Y	⑤ Y-(定数)	⑥ Y _{n-1}-Y_n}	③ × ⑤	② × ⑥	
							+	-	
12	754.206.324	16.324-	14.205.54.68.281	281-	3.279	2.9916		42.4263	
15	754.294.253	4.253-	12.381.34.700.905	2.905+	3.126	04.9668		13.4500	
14	754.293.943	3.943+	2.236.34.701.467	3.467+	7.609	7.7420		30.0022	
13	754.296.489	6.489+	14.515.34.708.514	10.514+	2.717	142.6127		17.6306	
37	754.207.458	12.458+	9.825.34.704.184	6.184-	12.233	60.8196	188.8807		
						39.9484	221.1826	242.4070	61.1828
						181.2241	$\frac{1}{2} = 90.6120$		181.2242
							27.4101		

580-10

35	754.212.743	12.743-	14.415.34.716.042	6.042-	4.203	92.1374		66.2018	
11	754.300.773	773-	8.425.34.720.368	10.368+	13.847	88.3872		10.7114	
10	754.264.218	4.218+	14.415.34.729.899	19.899+	4.203	306.7430		21.9462	
1	754.216.188	16.188+	8.425.34.725.571	14.571-	13.847	132.7427	224.3171		
						181.5246	439.4857	290.6189	32.6576
						257.9611	$\frac{1}{2} = 128.9806$		257.9613
							39.0166		

面積計算書

区

ブロック

143

計算者

精算者

備考

点	①	②	③	④	⑤	⑥	③ × ⑤	② × ⑥		
	X	X-(定数)	X _{n-1} -X _n	Y	Y-(定数)	Y _{n-1} -Y _n	-	+		
579-17 580-18										
ア	14 27 092	17 092	10.474	74 687 245	7 245	20.174	74.8841	244.8140		
イ	14 24 141	14 141	0.699	74 687 887	7 887	10.743		54.9167		
ウ	14 27 791	17 791	8.095	74 697 988	17 988	14.307	144.2531	254.5358		
エ	14 34 666	6 666	7.703	74 702 194	22 194	14.326	70.9603	92.9625		
オ	14 20 088	10 088	18.546	74 713 314	33 314	4.867		59.1220		
カ	14 34 614	24 614	7.904	74 708 061	28 061	26.069	196.5292	646.1084		
$\frac{2}{3} \cdot 94.80 - \frac{3}{1} \cdot 56.465 = 182.38335 \text{ m}^2$							392.0995	819.9924	986.5023	458.6062
$182.38335 + 31.53235 = 213.9157 \text{ m}^2$							427.8960	1/2 = 213.9480	427.8960	
							64.7192 ±			
579-16 580-21										
イ	14 24 141	14 141	1.824	74 687 887	7 887	7.431	104.6714	104.0817		
ウ	14 24 887	1 887	8.075	74 690 577	10 577	14.307	84.2427	26.5680		
エ	14 34 666	6 666	15.934	74 702 194	22 194	7.431	543.6391	45.0764		
オ	14 27 791	17 791	8.075	74 697 988	17 988	14.307	144.2531	254.5358		
$143.9865 - 36.53735 = 107.44915$							210.9191	498.8922	309.6174	71.6244
$107.44915 + 20.9426 + 10.61205 = 139.0138 \text{ m}^2$							287.9721	1/2 = 143.9860	287.9721	44
							42.0516 ±	43.5559 ±		

面積計算書

区
区

ブロック

143

計算者

精算者

備考

579-15
580-15
580-17

① × ⑤ ② × ⑥

X X-(定数) X_{n-1}-X_n Y Y-(定数) Y_{n-1}-Y_n

4	754.344.857	11.857	11.182	74.690.557	0.557	23.116	6.2283		264.2894	
11	754.338.906	8.906 +	1.086	74.690.198	1.198	11.803		1.3010		105.1175
11	754.342.943	12.943	7.675	74.700.360	13.360	15.409	94.8630			19.94712
11	754.331.231	1.231 -	7.375	74.706.607	16.607	16.204	122.4766			37.3445
□	754.335.568	5.568 +	18.857	74.710.564	28.564	6.707		538.1373		
11	754.350.088	20.088 +	6.289	74.713.314	23.314	28.007			146.6217	562.6046
							223.5679	686.5540	824.8740	
							211.8729	686.0180	826.6910	
							462.9861			
							469.4751	1/2 = 200.1921		367.1457
										367.8477
										462.9863
										70.0266
11	754.338.906	18.906 -	16.331	74.690.198	1.198	8.489	19.5645		160.4930	
又	754.326.612	6.612 -	7.675	74.690.871	3.871	15.409	3.0025		21.8870	101.8843
シ	754.331.231	11.231 +	16.331	74.706.607	16.607	8.489	29.7099			95.3389
11	754.342.943	22.943 +	7.675	74.700.360	13.360	15.409		271.2089		
							94.8630	350.5286		
							87.1880	376.9716		
							49.2744	366.0719	514.0516	199.2342
							52.9424	358.2969	518.0526	192.6057
							316.7975			316.7974
							328.4025	1/2 = 15.1525		328.4025
										152.3989

580-20
579-13
579-14
580-16

47.9156

面積計算書

工区

ブロック

143

計算者

精算者

備考

579-12

点	① X	② X-(定数)	③ X _{n-1} -X _n	④ Y	⑤ Y-(定数)	⑥ Y _{n-1} -Y _n	③ × ⑤	② × ⑥	
ア	754.326 612	26 612 -	22 802-34 69 871	3 871 -	2 422	22 2665		67.1144	
イ	754.306 324	6 324 -	16 250-34 898 281	2 281 +	10 922	139.5348		88.0427	
エ	754.309 762	9 762 +	22 802-34 707 793	17 793 +	2 422		405.7189	24.6197	
エ	754.329 126	29 126 +	16 250-34 700 803	10 803 -	10 922		182.2204	405.4921	
						227.8013	527.7464	472.6075	112.6624
						359.9451	1/2 = 179.9725		359.9451
							59.4416		
フ	754.329 126	29 126 -	26 806-34 700 803	803 -	10 921	20.9222		319.7161	
ク	754.309 762	9 762 -	12 922-34 707 793	7 793 +	24 768	100.8258		241.7052	
カ	754.316 188	16 188 +	25 806-34 725 571	25 571 +	10 921		557.2852	174.3609	
キ	754.325 568	25 568 +	12 922-34 718 564	18 564 -	24 768		240.1810	880.9482	
						121.5480	900.0662	1194.6143	416.1461
						778.5182	1/2 = 389.2591		778.5182
							117.7508		

