

(571)

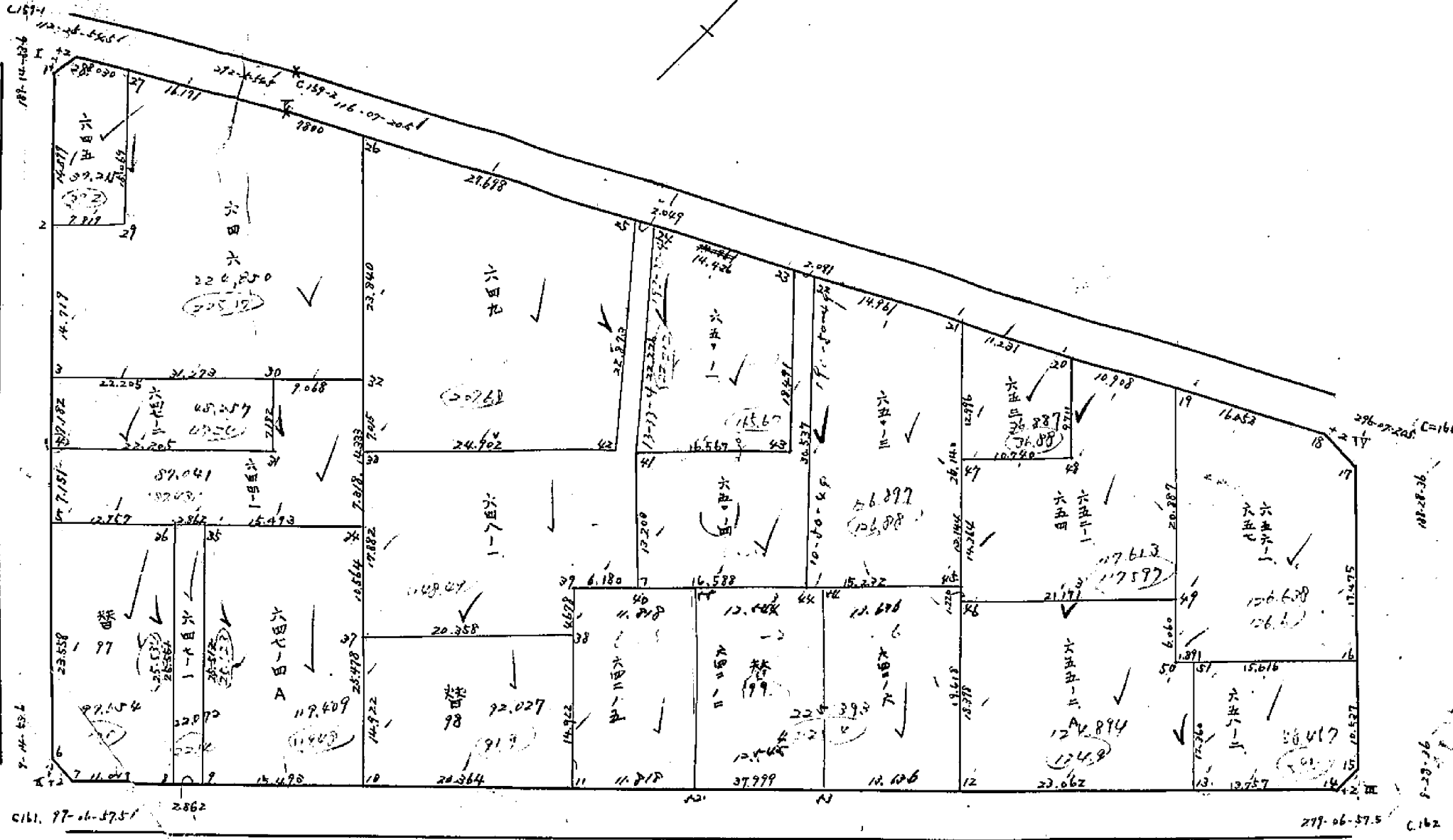
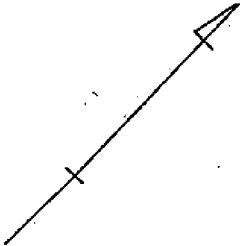
0.157

0.161 11-06-27.5

(206)

0.162

(112)



C161. 97-06-57.5

277-06-57.5 C162

# 面積計算書

工区: 81    ブロック: 81    計算者: 81    精算者: 81    備考:

点	①	②	③	④	⑤	⑥	③ × ⑤		② × ⑥	
	X	X-(定数)	X <sub>n-1</sub> -X <sub>n+1</sub>	Y	Y-(定数)	Y <sub>n-1</sub> -Y <sub>n+1</sub>	+	-	+	-
658-2		154.070			35.300					
14	154.085 838	- 15.838	+ 0.51 <sup>8</sup>	35 320 715	- 20.715	- 15.853		73.03 10.9510	251.0798	
15	154.084 177	- 14.177	- 12.081	35 318 456	- 18.446	- 3.822	222.8461		54.1844	
16	154.072 757	- 3.757	- 12.722	35 316 893	- 16.893	+ 13.892	214.9127			52.1922
51	154.071 455	- 1.455	+ 9.90 <sup>2</sup>	35 332 338	- 32.338	+ 19.906		920.2108 1785		25.3257
17	154.083 658	- 13.658	+ 14.383	35 334 299	- 34.299	- 11.623		493.7225	7584 158.7489	
							437.7588	824.2470 2136	464.044	77.5179
656-1 657		154.070			35.300		386.5048	1/2 = 193.2524	7584 0227 466	386.4972 5048
19	154.044 572	- 4.572	+ 19.5 <sup>3</sup> 6	35 329 930	- 29.938	+ 18.685		184.8687		85.4272
50	154.071 176	- 34.176	+ 29.185	35 334 209	- 34.209	- 13.045		998.3896	406.6909	
16	154.073 257	- 33.757	+ 16.679	35 316 893	- 16.893	- 20.186	281.7245		681.4188	
17	154.084 177	- 14.999	+ 22.117	35 314 023	- 14.023	+ 1.369	210.1466		19.8491	
18	154.051 640	- 11.640	+ 9.927	35 315 524	- 15.524	+ 15.915	154.1067			85.2506
							745.9778	1583.2583	407.9588 4066.1099	270.6784
							837.2805	1/2 = 418.6402	837.2805 819.4313	819.4313
									126.6386	



# 面積計算書

工  
区

ブ  
ロ  
ック

計  
算  
者

精  
算  
者

備  
考

点	①	②	③	④	⑤	⑥	③ × ⑤		② × ⑥	
	X	X-(定数)	X <sub>n-1</sub> -X <sub>n+1</sub>	Y	Y-(定数)	Y <sub>n-1</sub> -Y <sub>n+1</sub>	+	-	+	-
652-1 654		154 030			35 310					
20	154.039769	- 9.769	T 4.785	35.339733	- 39.733	T 11.335		190.1224		110.7316
48	154.049358	- 19.318	T 7.886	35.341273	- 41.273	T 12.144		225.4788		235.0714
47	154.067656	- 19.656	T 12.481	35.351777	- 51.877	T 12.880		647.4768		222.3969
46	154.061838	- 31.838	T 17.538	35.254153	- 59.153	- 18.629		949.7253	593.1101	
49	154.085193	- 25.193	- 17.266	35.273248	- 33.248	- 24.215	574.0599		852.1984	
19	154.064572	- 14.392	- 25.424	35.129938	- 29.938	+ 6.485	761.1477			944.794
							1335.2026	2112.8133	1455.3085	667.6998
							2774.0977	388.8048		777.1848
							277.5846	1/2 = 571.8000		777.1848
									117.6134	777.6092
650-3		154 120			35 340					
22	154.028235	- 8.235	+ 29.405	35.363253	- 23.253	+ 19.182		544.2264		57.9637
44	154.058228	- 38.228	+ 32.399	35.368777	- 29.000	- 9.273		939.5719	355.3528	
45	154.060634	- 40.634	- 29.405	35.383957	- 13.959	- 19.182	326.7378		779.4413	
21	154.074828	- 14.829	- 32.399	35.389818	- 9.818	+ 7.273	378.0933		779.4413	
							644.8224	1483.8976	1134.6941	325.7128
							828.9803	1134.6919	1134.6919	325.7128
							828.9803	1/2 = 571.8000		838.9803
										838.9803
										419.4901

126.895

# 面積計算書

工  
区

ブ  
ロ  
ック

計  
算  
者

精  
算  
者

備  
考

点	①	②	③	④	⑤	⑥	③ × ⑤		② × ⑥	
	X	X-(定数)	X <sub>n-1</sub> -X <sub>n+1</sub>	Y	Y-(定数)	Y <sub>n-1</sub> -Y <sub>n+1</sub>	+	-	+	-
650-1		<del>154</del> 154.020.000			75.360.000					
27	HK 020 962	0.962	+ 15.260	34 378 084	18.084	+ 18.163		275.961.8		174.720
41	HK 042 574	22.574	+ 24.513	34 383 293	23.293	- 9.424		570.981.3		<del>223.866.9</del> 446.114.4
43	HK 044 975	25.475	- 15.260	34 388 610	8.610	+ 18.163	131.388.6		462.702.4	69.282.8
23	HK 027 314	7.314	- 24.513	34 365 130	5.130	+ 9.424	125.781.6			<del>22.120</del> 86.765.6
							257.402	846.940.1	626.568.6	<del>122.120</del> 587.862.8
							150.770.6		<del>337.673.5</del>	
							189.802.9			
							816.012.5	1/2 <del>294.901.4</del>		
									89.207.6	
650-4		154.020.000			75.360.000					
23	HK 027 314	7.314	17.240	34 365 130	5.130	+ 5.257		88.444.12		11.724.3
43	HK 044 975	25.475	15.260	34 388 610	8.610	+ 18.163		131.388.6		462.702.4
41	HK 042 574	22.574	10.133	34 383 293	23.293	+ 16.268		236.027.9		378.520.8
40	HK 044 608	25.608	15.654	34 384 378	25.378	- 14.294		397.267.2		508.980.7
44	HK 048 228	20.228	27.373	34 388 999	8.999	- 22.125	246.327.6		645.794.4	
30	HK 028 238	8.238	30.914	34 363 263	3.263	- 3.869	100.563.2		311.886.2	
							346.892.8	857.124.8	1386.636.4	880.406.0
							506.232.1	<del>746.715.3</del>	<del>1173.787.7</del>	<del>998.770.2</del>
									<del>390.26.7</del>	<del>506.232.7</del>
										76.567.6

1/2 = ~~294.901.4~~  
25.7.11.11 76.567.6

# 面積計算書

工区 | ブロック | 計算者 | 精算者 | 備考

点	①	②	③	④	⑤	⑥	③	×	⑤	②	×	⑥
	X	X-(定数)	X <sub>n-1</sub> -X <sub>n+1</sub>	Y	Y-(定数)	Y <sub>n-1</sub> -Y <sub>n+1</sub>	+	-	-	+	-	-
642-2												
39	154.054.632	- 7.632	+ 13.350	35.371.480	- 91.480	+ 20.626						182.1796
11	154.073.984	- 23.984	+ 25.373	35.374.586	- 44.586	- 34.412				1131.2805		825.2374
12	154.080.005	- 30.005	- 13.350	35.377.068	- 7.068	- 40.626	94.3578			1218.9831		1219.0531
45	154.060.634	- 10.634	- 25.373	35.353.959	- 3.960	+ 34.412	100.4770					265.9372
分筆あり 642-4.6642-6 区画 $725 = 1018 - 499.1430 = 242.9488 \text{ m}^2 = 76.4028$							194.8348			2044.3205		554.1168
							174.8295	1685.0385		2044.7505		554.1168
							1490.2037					1490.2037
							199.2290	1/2 = 795.10				199.2290
649												
26	154.007.863	- 7.863	+ 18.283	35.606.797	- 104.997	+ 29.969				1916.5275		233.2873
23	154.038.348	- 38.348	+ 34.433	35.609.599	- 109.599	- 30.626				748.3220		244.0776
42	154.062.296	- 42.296	- 18.288	35.576.585	- 85.288	- 29.969	559.6555			3773.6157		1254.8800
25	154.020.060	- 20.060	- 34.433	35.379.954	- 79.924	+ 30.626	1225.6157			1259.795		391.4508
							2752.0270					606.2379
							431.6285					628.238
							1778.4647	5690.1432		2412.4563		244.4735
							1271.7159			2003.2028		259.7472
								1/2 = 689.2323				1278.4647
												1344.4735
												208.4727

# 面積計算書

工区

2

ブロック

81

計算者

先

精算者

備考

△等

642-2 { 642-5  
642-6

山	①	②	③	④	⑤	⑥	③	×	⑤	②	×	⑥
	X	X-(定数)	X <sub>n-1</sub> -X <sub>n+1</sub>	Y	Y-(定数)	Y <sub>n-1</sub> -Y <sub>n+1</sub>	+	-	+	-	-	
642-5												
39	144 044 432	- 40 632	- 17 486	74 391 480	- 91 480	- 14 726	1499 4278			807 2424		
44	144 046 499	- 46 499	+ 21 224	74 399 810	- 99 810	- 8 463		1693 8874		481 8009		
42	144 076 846	- 75 846	+ 17 484	74 382 917	- 82 917	+ 14 776		1449 8007			1120 8482	
41	144 077 984	- 73 984	- 21 224	74 394 486	- 94 486	+ 8 463	2007 4972				437 4249	
							2607 0310	1143 6911	1291 0433	1744 2721		
							463 3299	1/2 = 231.6649 m <sup>2</sup>		463 3298		
								70.0786 m <sup>2</sup>				
642-6												
44	144 068 480	- 49 480	- 17 210	74 367 424	- 67 424	- 16 472	1160 3842			969 1205		
45	144 060 624	- 60 624	+ 21 425	74 343 960	- 49 960	- 10 347		1161 4890		627 9862		
42	144 080 004	- 80 004	+ 17 210	74 347 068	- 49 068	+ 16 472		982 1402			1224 8424	
43	144 077 844	- 77 844	- 21 424	74 370 432	- 90 432	+ 10 347	1458 2013				806 2203	
							2672 4844	2143 6292	1497 1168	2122 0772		
							434 9463	1/2 = 267.4781 m <sup>2</sup>		434 9463		
								70.921 m <sup>2</sup>				



# 面積計算書

工  
区

ブ  
ロ  
ック

計  
算  
者

精  
算  
者

備  
考

648-1

点	①	②	③	④	⑤	⑥	③ × ⑤		② × ⑥	
	X	X-(定数)	X <sub>n-1</sub> -X <sub>n+1</sub>	Y	Y-(定数)	Y <sub>n-1</sub> -Y <sub>n+1</sub>	+	-	+	-
25	754.020060	-0.060	+ 21.334	75.379.924	- 9.924	+ 2.199		211.7186	<del>211.7186</del>	0.4319
42	754.042296	-22.296	+ 18.288	75.385.288	- 4.568	+ 29.669		279.4965	<del>279.4965</del>	661.5000
23	754.038348	-18.348	+ 13.719	75.409.593	- 39.593	+ 22.089		543.1763	<del>543.1763</del>	487.0289
27	754.056015	-36.015	+ 20.902	75.412.772	- 42.772	- 19.371		885.6595		625.6165
38	754.059250	-39.250	- 1.383	75.392.222	- 22.222	- 20.892	70.2270			820.0110
39	754.054632	-34.632	- 3.642	75.391.480	- 21.480	- 6.844	78.2301			237.0214
40	754.05608	-35.608	- 12.058	75.385.378	- 15.378	- 8.187	185.4279			291.5226
41	754.042574	-22.574	- 34.646	75.383.293	- 13.293	- 9.294	460.5492			164.6547
24	754.020962	-0.962	- 22.514	75.378.084	- 8.084	- 3.369	182.0021			3.2409
							936.9433	1920.0699	2142.0671	4558.9608
							<del>983.1066</del>	<del>1724.0341</del>	<del>2142.2782</del>	<del>4558.1828</del>
							491.5531	Y <sub>2</sub> = 320.171*	983.1063	787.0954
									148.6PKD ↓	

# 面積計算書

工  
区

ブ  
ロ  
ック

計  
算  
者

精  
算  
者

備  
考

点	①	②	③	④	⑤	⑥	③ × ⑤		② × ⑥	
	X	X-(定数)	X <sub>n-1</sub> -X <sub>n+1</sub>	Y	Y-(定数)	Y <sub>n-1</sub> -Y <sub>n+1</sub>	+	-	+	-
保98		154 050			25 390					
37	754.056015	- 6.015	+ 11.508	75.442.272	- 22.392	+ 22.490		257.4569		175.1570
10	754.070758	- 20.958	+ 17.969	75.414.692	- 24.692	- 19.986		443.6905	269.2017	
11	754.073984	- 23.984	- 11.508	75.394.586	- 9.586	- 22.490	52.7756		530.9204	
38	754.089250	- 9.250	- 17.969	75.392.222	- 2.222	+ 17.986	39.9271			166.5205
							92.7027	701.1474	908.1221	299.6775
647-4 A		154 040			25 410		608.4447	1/2 = 304.2223		608.4446
									92.0272	
24	754.045578	- 5.578	- 27.665	75.4010.730	- 0.730	+ 11.294	20.1954			62.9979
25	754.043093	- 3.093	+ 22.925	75.426.986	- 15.986	+ 19.260		367.2818		59.5711
9	754.068303	- 28.303	+ 27.665	75.429.990	- 19.990	- 11.294		553.0233	219.6540	
10	754.070758	- 30.958	- 22.925	75.414.692	- 4.692	- 19.260	106.6257		592.3990	
							126.8211	916.3051	912.0530	122.5690
							789.4840	1/2 = 394.7420		789.4840
									119.4094	

# 面積計算書

工  
区

ブ  
ロ  
ック

計  
算  
者

精  
算  
者

御  
考

点	①	②	③	④	⑤	⑥	③ × ⑤		② × ⑥	
	X	X-(定数)	X <sub>n-1</sub> -X <sub>n</sub>	Y	Y-(定数)	Y <sub>n-1</sub> -Y <sub>n</sub>	+	-	+	-
647-1		154 000			35 420					
25	154 043.073	- 3.093	- 25.669	25.425.986	- 5.986	- 1.186	153.6546		3.6682	
26	154 042.634	- 2.634	+ 24.757	25.428.806	- 8.804	+ 6.829		217.9606		17.9875
8	154.067.850	- 27.850	+ 25.669	25.432.815	- 12.815	+ 1.186		328.9482		33.0301
9	154 068.303	- 28.303	- 24.757	25.429.990	- 9.990	- 6.829	247.3224		193.2811	
							400.9770	546.9088	196.9493	51.0176
							145.9318	1/2 = 72.9659	9659	145.9319
									22.0721	
保97		154 070			35 400					
26	154.062.634	- 2.634	- 27.299	25.428.806	- 28.804	+ 8.747	286.1763		23.0295	
5	154.040.556	- 0.556	+ 21.199	25.441.062	- 41.062	+ 16.545		880.2415		9.1990
6	154.063.813	- 23.813	+ 25.548	25.445.369	- 45.349	+ 2.133		1158.5762		50.7931
7	154.066.104	- 26.104	+ 9.039	25.443.695	- 43.695	- 12.574		126.3967	327.1875	
8	154 067.850	- 27.850	- 23.470	25.432.815	- 32.815	- 19.891	770.680		414.2147	
							1556.3443	2215.2144	741.9018	83.0716
							658.8701	1/2 = 329.4251	329.4251	658.8702
									99.6541	

# 面積計算書

工区

ブロック

81

計算者

精算者

備考

点	①	②	③	④	⑤	⑥	③ × ⑤		② × ⑥	
	X	X-(定数)	X <sub>n-1</sub> -X <sub>n+1</sub>	Y	Y-(定数)	Y <sub>n-1</sub> -Y <sub>n+1</sub>	+	-	+	-
644-1		154020.000			154020.000					
30	154.029.977	9.977	5.651	154.417.342	7.342	9.977		97.7996		7101
31	154.017.068	17.068	3.519	154.418.476	18.476	23.070		65.0877		7758
4	154.037.496	13.496	3.488	154.440.412	40.412	27.066		140.9470		2852
5	154.040.556	20.556	12.082	154.441.562	41.562	29.682		502.1520	610.1437	1637
34	154.041.578	25.578	9.139	154.410.730	10.730	33.059	98.0614		845.5831	
32	154.031.417	11.417	15.601	154.408.507	8.507	6.612	122.6553			25.4892
							270.7162	806.1995	7468	880.3667
							575.4797	2632	165.7262	75.2183
								Y <sub>2</sub> = 279.7397	7397	4866
647-2		154020.000			154020.000			87.0423	287.4414	
30	154.029.977	9.977	10.663	154.417.342	7.342	20.762	78.2077			1324
3	154.026.405	6.405	3.519	154.439.258	29.258	27.070		102.9689		7697
4	154.037.496	13.496	10.663	154.440.412	30.412	20.762		724.2837	280.1904	147.2653
31	154.017.068	17.068	3.519	154.418.476	8.476	23.070				7758
							9009			7758
							29.8974			7758
							1886			9999
							108.1857	2528		9021
							319.5679	427.2420	673.9620	254.9057
							0642		9662	646
								Y <sub>2</sub> = 159.5204		319.0567
								159.5204		0647

48.2584 ↓

# 面積計算書

工区 \_\_\_\_\_ ブロック \_\_\_\_\_ 計算者 \_\_\_\_\_ 精算者 \_\_\_\_\_ 備考 \_\_\_\_\_

点	①	②	③	④	⑤	⑥	③ × ⑤		② × ⑥	
	X	X-(定数)	X <sub>n-1</sub> -X <sub>n+1</sub>	Y	Y-(定数)	Y <sub>n-1</sub> -Y <sub>n+1</sub>	+	-	+	-
646										
27	153.998 256	- 8.256	+ 8.702	25.426 752	- 26.752	+ 17.374				
29	154.013 130	- 23.130	+ 13.618	25.429.17	- 29.179	+ 10.140				
2	154.011.874	- 21.874	+ 13.295	25.436.892	- 36.892	+ 10.088				
3	154.026.405	- 36.405	+ 19.547	25.439.258	- 39.258	- 28.389				
22	154.024.417	- 41.417	- 18.542	25.408.503	- 8.503	- 34.461	157.6626		1427.2717	
26	154.007.863	- 17.863	- 26.989	25.406.797	- 4.797	+ 3.298	129.4662			58.9121
V	154.004.428	- 14.428	- 9.609	25.411.806	- 11.806	+ 24.955	112.2222			216.2667
							400.5010	1887.0613	2460.7727	974.2555
							1486.5603	763.2802	1486.5888	1486.5888
							1486.3148	1/2 = 1943.2074	1486.5888	1486.6150
645										
28	154.995.754	- 5.954	- 1.091	25.432.328	- 32.328	+ 7.745	2687		224.8422	46.1137
1	154.997.165	- 7.165	+ 15.920	25.424.087	- 34.497	+ 4.564	25.2677			70.82
2	154.011.874	- 21.874	+ 15.965	25.436.892	- 36.892	- 5.322				22.7079
29	154.013.130	- 23.130	- 13.618	25.429.17	- 29.179	- 10.140	397.2051		116.4134	26.0228
27	153.998.256	- 8.256	- 17.176	25.426.752	- 26.752	+ 3.1588	397.2051		234.5782	26.0228
							892.1317		1138.1729	250.8516
							892.0861		350.8641	104.8128
							246.0512	1/2 = 123.0256	246.0512	246.0512
							246.1068	246.1068	246.1068	246.1068

# 面積計算書

工  
区

ブ  
ロ  
ック

計  
算  
者

精  
算  
者

備  
考

点	①	②	③	④	⑤	⑥	③ × ⑤		② × ⑥	
	X	X-(定数)	X <sub>n-1</sub> -X <sub>n+1</sub>	Y	Y-(定数)	Y <sub>n-1</sub> -Y <sub>n+1</sub>	+	-	+	-
I	153 998.191	- 5.191	+ 1.211	35 434.176	- 4.176	+ 2.169				
1	153 997.165	- 7.165	+ 0.763	35 434.497	- 4.497	- 1.548				
28	153 995.954	- 5.954	- 1.974	35 432.328	- 2.328	- 0.321				
							5934 8949	8.9883	15.1521	8948
							3.8929	1/2 = 1.9475	1.9475	3.8929
									0.5891	
II	154 065.787	- 5.787	- 2.291	35 445.670	- 5.670	+ 1.654				
6	154 063.813	- 3.813	+ 0.319	35 445.389	- 5.349	- 1.975				
7	154 066.104	- 6.104	+ 1.974	35 443.695	- 3.695	+ 0.321				
							12.9899	8.9895	11.5309	9.5716
								1.6956	2.5306	9.5716
								7.2939	7.5206	1.9593
								4.0004	8.9895	11.5309
								1/2 = 2.0002	2.0002	4.0003
									2.6050	

# 面積計算書

工  
区

ブ  
ロ  
ック

計  
算  
者

精  
算  
者

備  
考

点	①	②	③	④	⑤	⑥	③ × ⑤		② × ⑥	
	X	X-(定数)	X <sub>n-1</sub> -X <sub>n+1</sub>	Y	Y-(定数)	Y <sub>n-1</sub> -Y <sub>n+1</sub>	+	-	+	-
		-154.084.000			-35.318.000					
III	154.084.155	2.155	+ 1.661	35.318.741	0.741	+ 2.269		1.2308		4.8896
14	154.084.838	1.838	- 1.978	35.320.715	2.715	- 0.295	5.3702			0.5422
15	154.084.177	0.177	+ 0.317	35.318.446	0.446	- 1.974		0.1413		0.3493
							5.3702	1.3721	0.8915	4.8896
							3.9981	1/2 = 1.9990	0.60461	3.9981
		-154.051.000			-35.313.000					
IV	154.052.521	1.521	+ 2.859	35.313.720	0.720	- 1.501		2.0813		2.2030
17	154.054.499	3.499	0.881	35.314.023	1.023	+ 1.796	0.9012			6.2842
18	154.057.640	0.640	- 1.978	35.315.524	2.524	- 0.295	4.9924			0.1888
							5.8936	2.0813	2.47.8	
							3.8123	1/2 = 1.9062	0.57664	3.8124