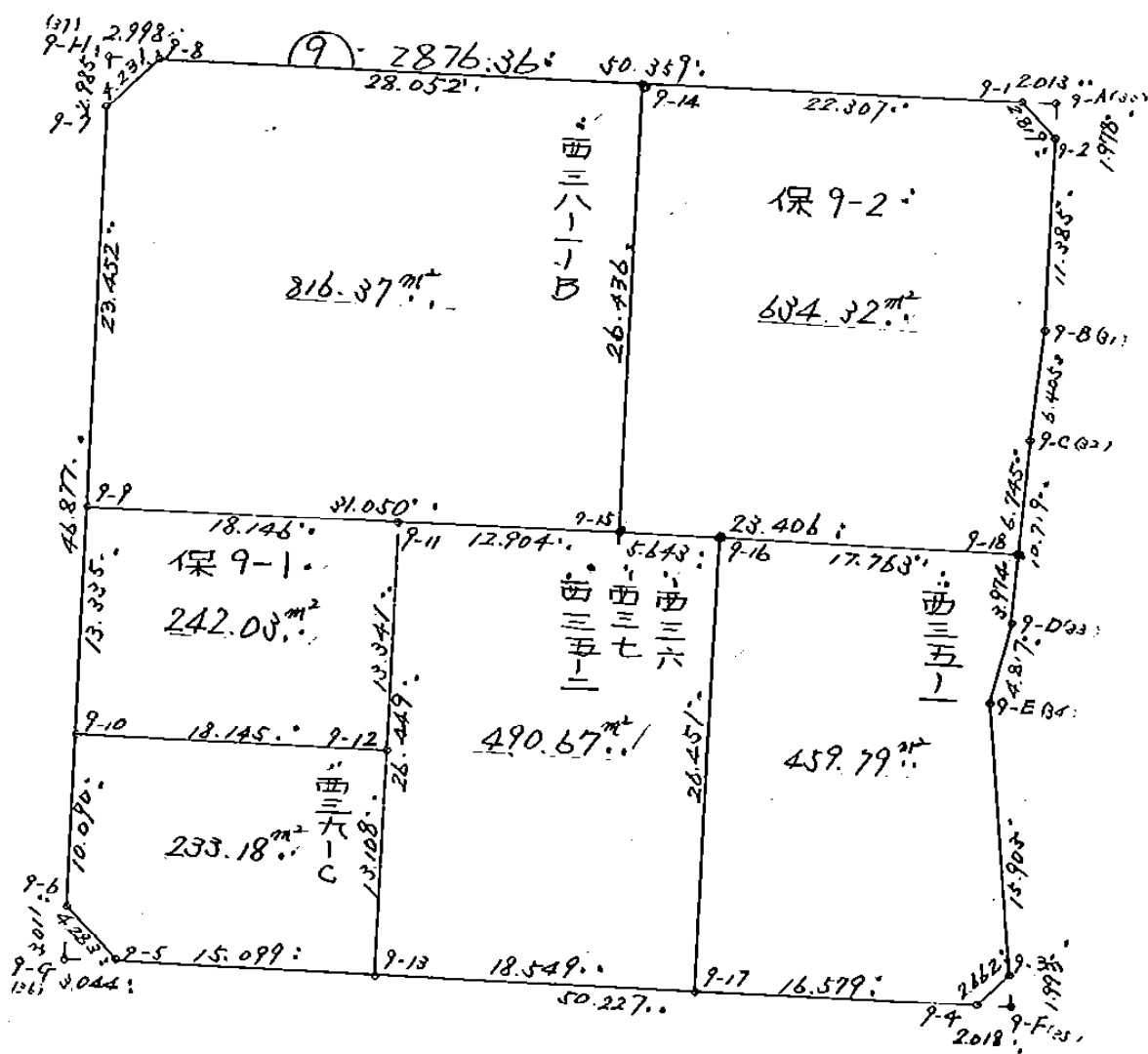
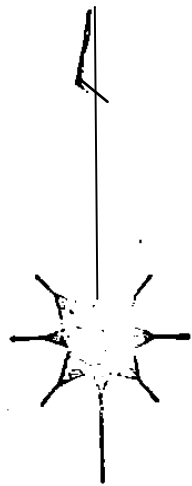
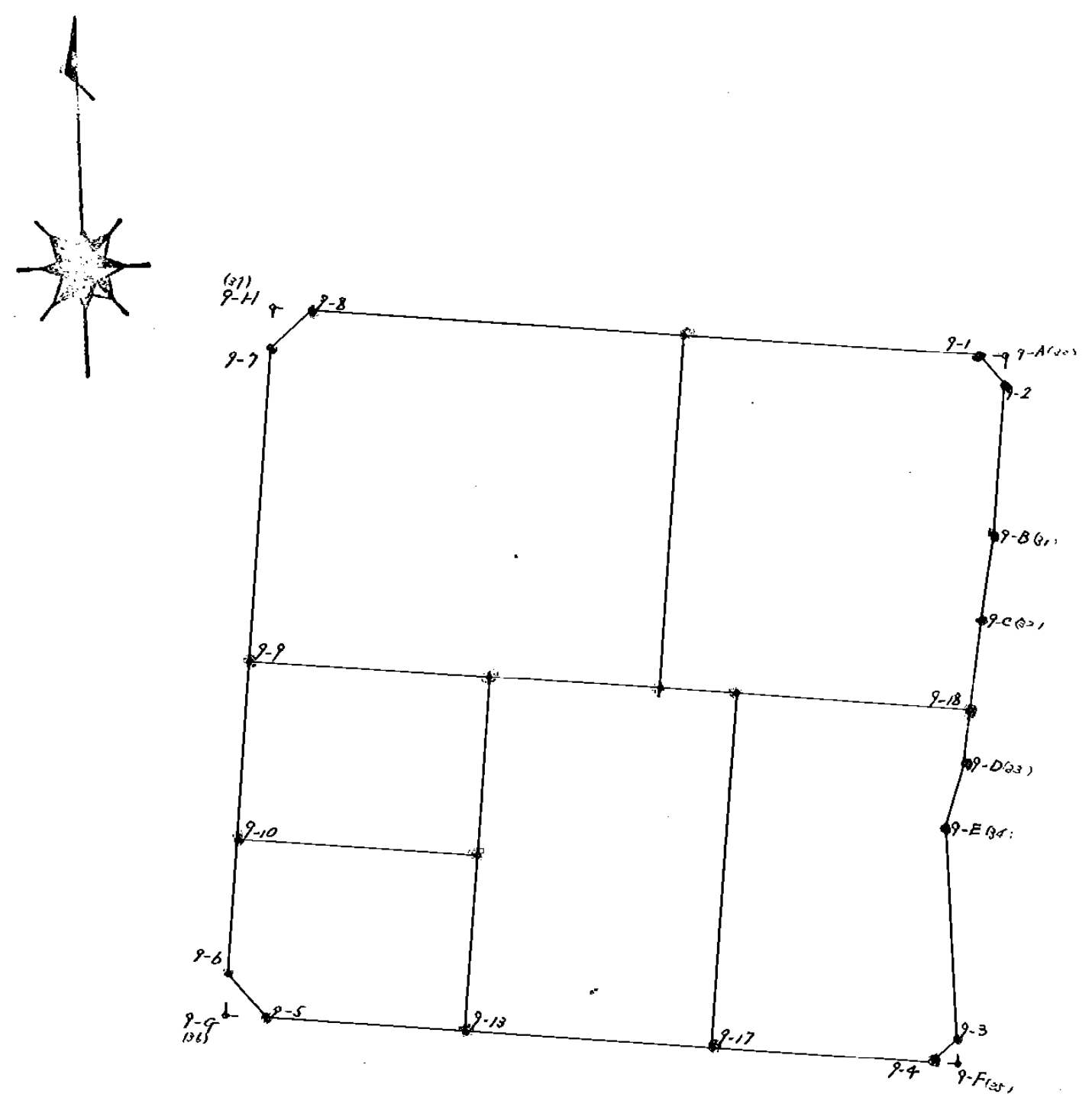


97ブロック

S=1:500



2707  
杭打図 S=1:500



凡	例
ベンキ	◎
ラベル	○
鉄	○
コンクリート杭	○
木杭	○

9. ブロック

\*\* 倍横距法面積計算 \*\*

観測点	挟角	方向角	距離	緯距	経距	X	Y	測点	倍横距	倍面積
()9-8	135-08-24	228-28-40	4.231	-2.805	-3.168	-151,766.128	-39,051.352	()9-7	-3.168	8.886240
()9-7	134-52-28	183-21-08	46.877	-46.797	-2.741	-151,812.925	-39,054.093	()9-6	-9.077	424.776369
()9-6	134-41-43	138-02-51	4.283	-3.185	2.863	-151,816.110	-39,051.230	()9-5	-8.955	28.521675
()9-5	135-19-43	93-22-34	50.227	-2.958	50.140	-151,819.068	-39,001.090	()9-4	44.048	-130.293984
()9-4	131-59-21	45-21-55	2.662	1.870	1.894	-151,817.198	-38,999.196	()9-3	96.082	179.673340
()9-3	131-11-18	356-33-13	15.903	15.874	-0.956	-151,801.324	-39,000.152	()9-34	97.020	1540.095480
()9-34	199-54-23	16-27-36	4.817	4.620	1.365	-151,796.704	-38,998.787	()9-33	97.429	450.121980
()9-33	169-40-59	6-08-35	10.719	10.657	1.147	-151,786.047	-38,997.640	()9-32	99.941	1065.071237
()9-32	182-13-57	8-22-32	6.405	6.337	0.933	-151,779.710	-38,996.707	()9-31	102.021	646.507077
()9-31	175-05-02	3-27-34	11.385	11.364	0.687	-151,768.346	-38,996.020	()9-2	103.641	1177.776324
()9-2	134-24-57	317-52-31	2.819	2.091	-1.891	-151,766.255	-38,997.911	()9-1	102.437	214.195767
()9-1	135-27-45	273-20-16	50.356	2.932	-50.273	-151,763.323	-39,048.184	()9-8	50.273	147.400436
TOTAL	1800-00-00		210.686						合計	5752.731941
									面積	2876.3659705

西·38-1-B 田

\*\* 倍横距法面積計算 \*\*

観測点	挟角	方向角	距離	緯距	経距	X	Y	測点	倍横距	倍面積
()9-8	135-08-26	228-28-40	4.231	-2.805	-3.168	-151,766.128	-39,051.352	()9-7	-3.168	8.886240
()9-7	134-52-25	183-21-05	23.452	-23.412	-1.371	-151,789.540	-39,052.723	()9-9	-7.707	180.436284
()9-9	89-59-06	93-20-11	31.050	-1.807	30.997	-151,791.347	-39,021.726	()9-15	21.919	-39.607633
()9-15	90-00-58	3-21-09	26.436	26.391	1.546	-151,764.956	-39,020.180	()9-14	54.462	1437.306642
()9-14	89-59-05	273-20-14	28.052	1.633	-28.004	-151,763.323	-39,048.184	()9-8	28.004	45.730532
TOTAL	540-00-00		113.221						合計	1632.752065
									面積	816.3760325

保 9-2 田

\*\* 倍横距法面積計算 \*\*

観測点	挟角	方向角	距離	緯距	経距	X	Y	測点	倍横距	倍面積
()9-14	90-00-51	183-21-09	26.436	-26.391	-1.546	-151,791.347	-39,021.726	()9-15	-1.546	40.800486
()9-15	90-05-29	93-26-38	23.406	-1.406	23.364	-151,792.753	-38,998.362	()9-18	20.272	-28.502432
()9-18	92-42-04	6-08-42	6.745	6.706	0.722	-151,786.047	-38,997.640	()9-32	44.358	297.464748
()9-32	182-13-50	8-22-32	6.405	6.337	0.933	-151,779.710	-38,996.707	()9-31	46.013	291.584381
()9-31	175-05-02	3-27-34	11.385	11.364	0.687	-151,768.346	-38,996.020	()9-2	47.633	541.301412
()9-2	134-24-57	317-52-31	2.819	2.091	-1.891	-151,766.255	-38,997.911	()9-1	46.429	97.083039
()9-1	135-27-47	273-20-18	22.307	1.299	-22.269	-151,764.956	-39,020.180	()9-14	22.269	28.927431
TOTAL	900-00-00		99.503						合計	1268.659065
									面積	634.3295325

保 9-1 田

\*\* 倍横距法面積計算 \*\*

観測点	挟角	方向角	距離	緯距	経距	X	Y	測点	倍横距	倍面積
()9-9	90-01-02	183-21-12	13.335	-13.312	-0.780	-151,802.852	-39,053.503	()9-10	-0.780	10.383360
()9-10	90-00-19	93-21-31	18.145	-1.063	18.114	-151,803.915	-39,035.389	()9-12	16.554	-17.596902
()9-12	89-59-50	3-21-21	13.348/	13.319	0.781	-151,790.596	-39,034.608	()9-11	35.449	472.145231
()9-11	89-58-49	273-20-10	18.146	1.056	-18.115	-151,789.540	-39,052.723	()9-9	18.115	19.129440
TOTAL	360-00-00		62.968						合計	484.061129
									面積	242.0305645

西・39-C・田

\*\* 倍横距法面積計算 \*\*

観測点	挟角	方向角	距離	緯距	経距	X	Y	測点	倍横距	倍面積
()9-10	89-59-37	183-21-08	10.090	-10.073	-0.590	-151,812.925	-39,054.093	()9-6	-0.590	5.943070
()9-6	134-41-43	138-02-51	4.283	-3.185	2.863	-151,816.110	-39,051.230	()9-5	1.683	-5.360355
()9-5	135-19-54	93-22-45	15.099	-0.890	15.073	-151,817.000	-39,036.157	()9-13	19.619	-17.460910
()9-13	89-58-47	3-21-32	13.108	13.085	0.768	-151,803.915	-39,035.389	()9-12	35.460	463.994100
()9-12	89-59-59	273-21-31	18.145	1.063	-18.114	-151,802.852	-39,053.503	()9-10	18.114	19.255182
TOTAL	540-00-00		60.725						合計	466.371087
									面積	233.1855435

西 36 田  
 西 37 雜種地  
 西 35-2 田

\*\* 倍横距法面積計算 \*\*

観測点	挟角	方向角	距離	緯距	経距	X	Y	測点	倍横距	倍面積
()9-11	90-01-16	183-21-27	26.449	-26.404	-1.549	-151,817.000	-39,036.157	()9-13	-1.549	40.899796
()9-13	90-01-03	93-22-30	18.549	-1.092	18.517	-151,818.092	-39,017.640	()9-17	15.419	-16.837548
()9-17	89-58-40	3-21-10	26.451	26.406	1.547	-151,791.686	-39,016.093	()9-16	35.483	936.964098
()9-16	90-05-28	273-26-38	5.643	0.339	-5.633	-151,791.347	-39,021.726	()9-15	31.397	10.643583
()9-15	179-53-33	273-20-11	12.904	0.751	-12.882	-151,790.596	-39,034.608	()9-11	12.882	9.674382
TOTAL	540-00-00		89.996						合計	981.344311
									面積	490.6721555



西 35-1 田

\*\* 倍横距法面積計算 \*\*

観測点	挟角	方向角	距離	緯距	経距	X	Y	測点	倍横距	倍面積
()9-16	89-54-33	183-21-10	26.451	-26.406	-1.547	-151,818.092	-39,017.640	()9-17	-1.547	40.850082
()9-17	90-01-20	93-22-30	16.579	-0.976	16.550	-151,819.068	-39,001.090	()9-4	13.456	-13.133056
()9-4	131-59-25	45-21-55	2.662	1.870	1.894	-151,817.198	-38,999.196	()9-3	31.900	59.653000
()9-3	131-11-18	356-33-13	15.903	15.874	-0.956	-151,801.324	-39,000.152	()9-34	32.838	521.270412
()9-34	199-54-23	16-27-36	4.817	4.620	1.365	-151,796.704	-38,998.787	()9-33	33.247	153.601140
()9-33	169-40-46	6-08-22	3.974	3.951	0.425	-151,792.753	-38,998.362	()9-18	35.037	138.431187
()9-18	87-18-15	273-26-37	17.763	1.067	-17.731	-151,791.686	-39,016.093	()9-16	17.731	18.918977
TOTAL	900-00-00		88.149						合計	919.591742
									面積	459.7958710