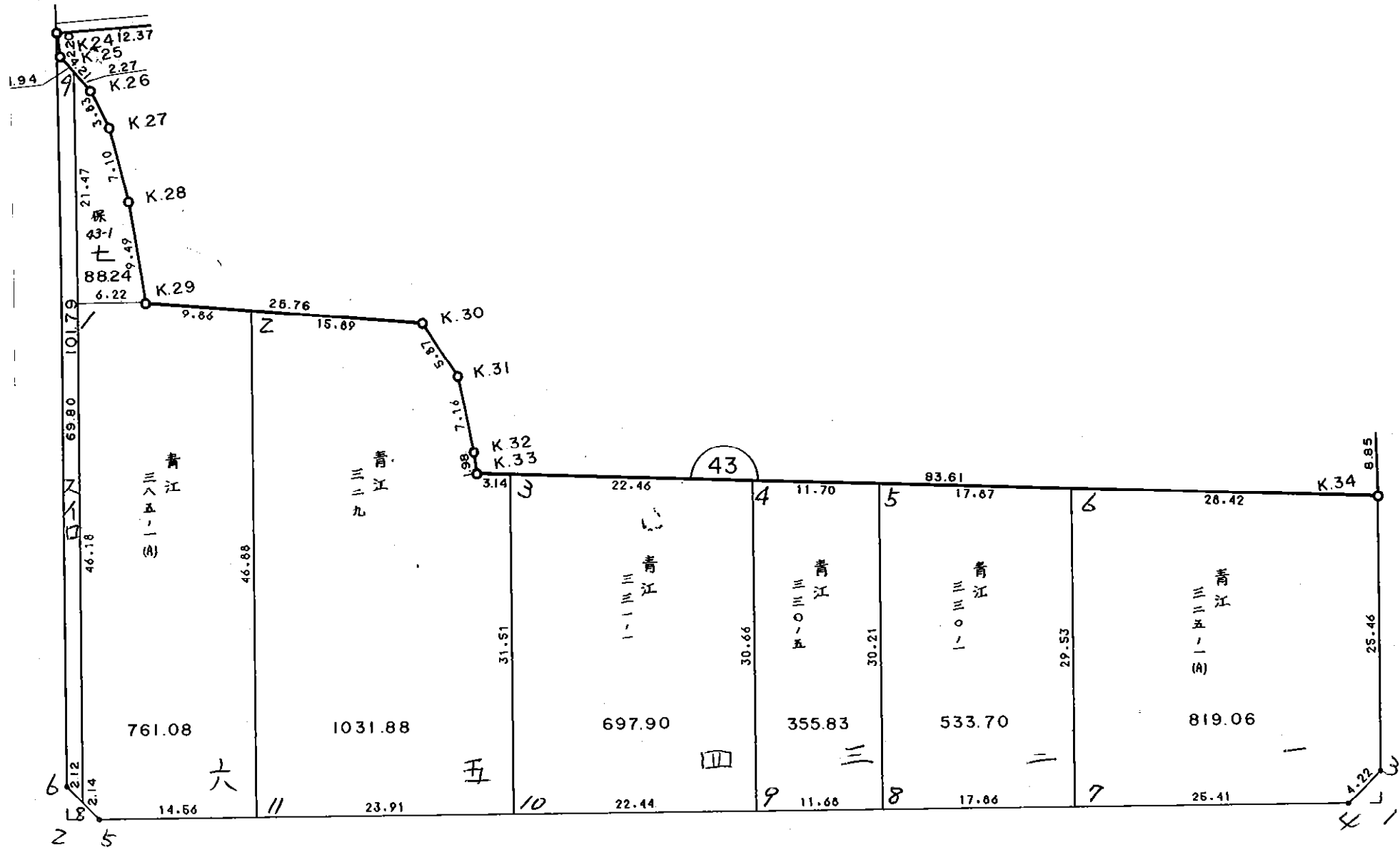
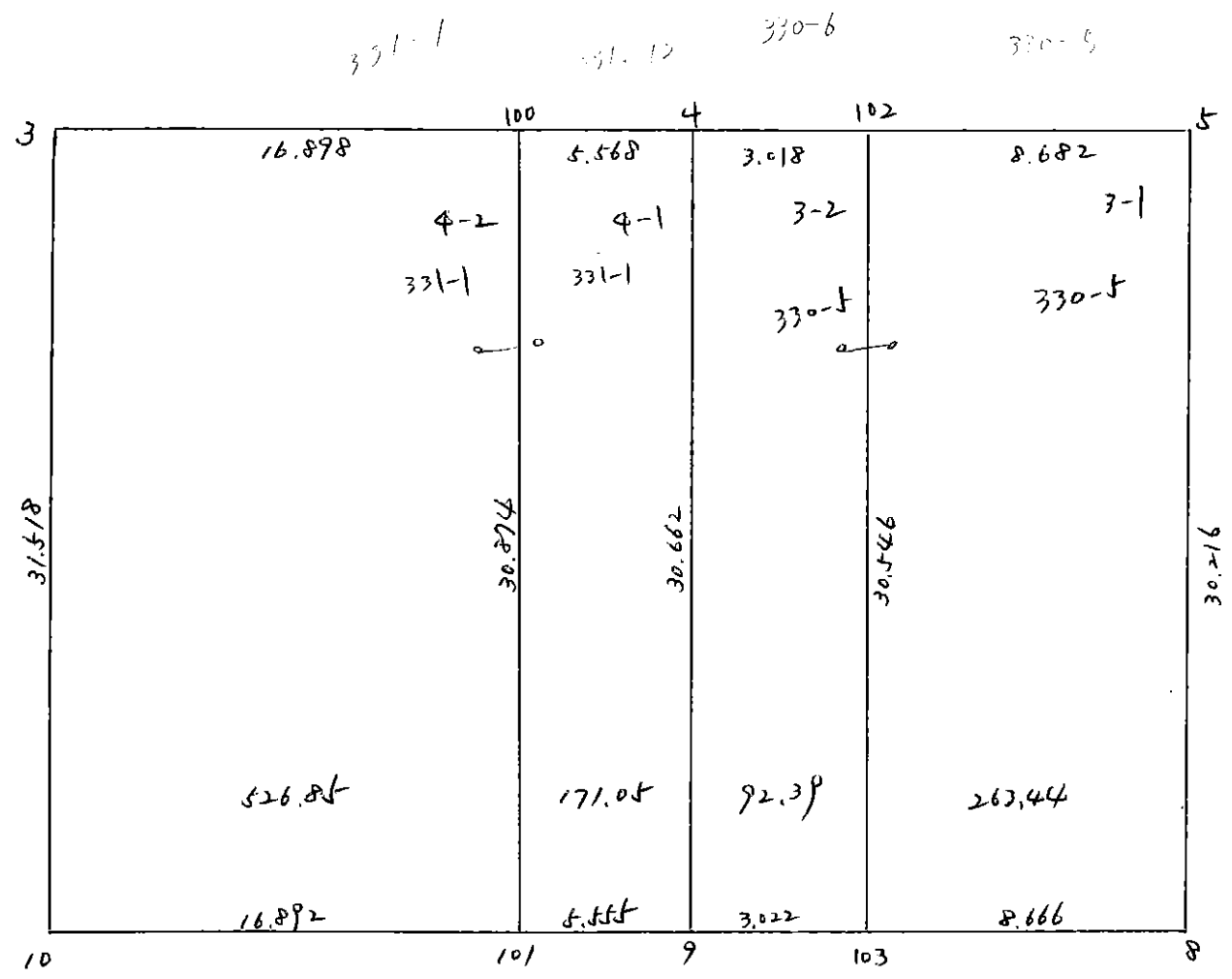


BNo. 43



43 Blok 3/4 D.t



43 BLOCK

FLNO. X ₀ , Y ₀ =	X	Y	(X-X ₀) (Y _{N-1} -Y ₀)	(X _{N-1} -X ₀) (Y-Y ₀)
3	-151600.000	-37700.000		
3	-151676.001	-37731.059		
4	-151680.606	-37709.070	2503.541754	689.329070
9	-151710.833	-37714.217	1005.255310	1145.975502
10	-151709.072	-37736.346	1522.242624	4028.336218
3	-151676.001	-37731.059	2762.332346	3325.549248
			7793.372034	9189.190038
			平均点 =	1395.818004
			点 =	697.909002

4-1 LOT

FLNO. X ₀ , Y ₀ =	X	Y	(X-X ₀) (Y _{N-1} -Y ₀)	(X _{N-1} -X ₀) (Y-Y ₀)
4	-151680.606	-37709.070		
9	-151710.833	-37714.217		
101	-151709.902	-37719.693	1005.255310	1145.975502
100	-151679.464	-37714.520	1562.476734	2182.634269
4	-151680.606	-37709.070	1564.884552	1595.777040
			-1170.399120	720.738480
			5303.015716	5645.125291
			平均点 =	342.109575
			点 =	171.054788

4-2 LOT

FLNO. X ₀ , Y ₀ =	X	Y	(X-X ₀) (Y _{N-1} -Y ₀)	(X _{N-1} -X ₀) (Y-Y ₀)
3	-151676.001	-37731.059		
100	-151679.464	-37714.520	2468.072376	1103.534520
101	-151709.902	-37719.693	1595.777040	1564.884552
10	-151707.072	-37736.346	2108.568896	3994.498092
3	-151676.001	-37731.059	2762.332346	3325.549248
			8934.750658	9988.466412
			平均点 =	1053.715754
			点 =	526.857877

43 BLOCK

元NO. X ₀ , Y ₀ =	X	Y	(X-X ₀) (Y _{N-1} -Y ₀)	(X _{N-1} -X ₀) (Y-Y ₀)
	-151600.000	-37600.000		
4	-151680.606	-37709.070		
5	-151683.004	-37697.618	9053.246280	7868.596508
8	-151712.791	-37702.694	11010.431838	8524.012776
9	-151710.833	-37714.217	11381.884102	12882.649647
4	-151680.606	-37709.070	9206.575502	12088.555310
			40652.137722	41363.814241
			平均値=	711.676519
			最大値=	355.838260

3-1 LOT

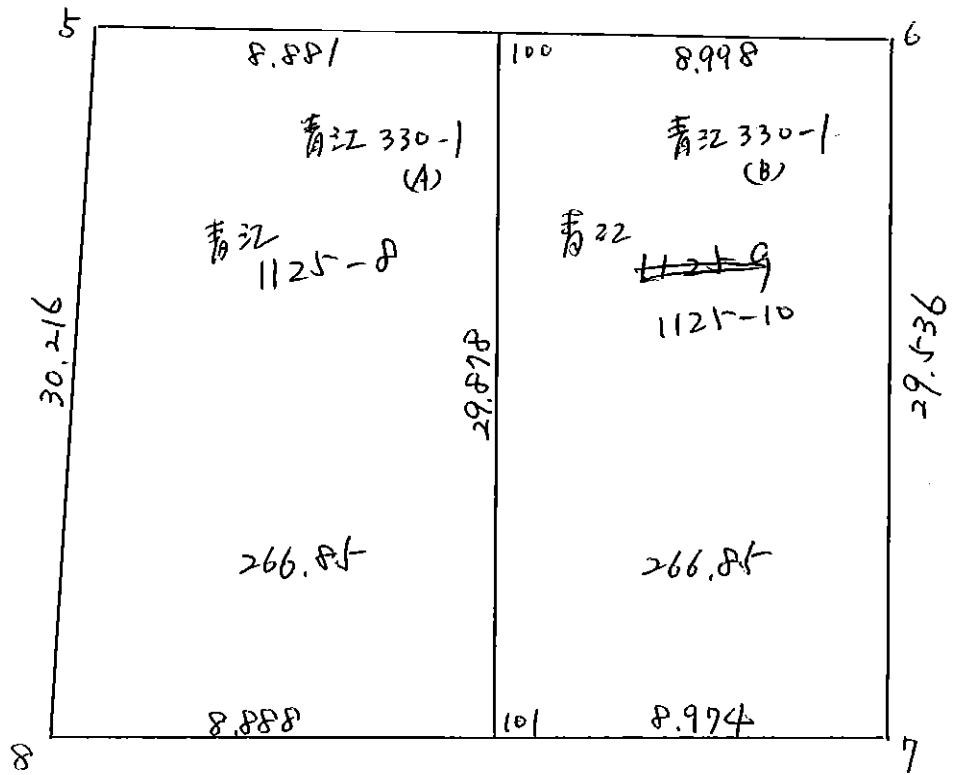
元NO. X ₀ , Y ₀ =	X	Y	(X-X ₀) (Y _{N-1} -Y ₀)	(X _{N-1} -X ₀) (Y-Y ₀)
	-151600.000	-37600.000		
102	-151681.225	-37706.116		
5	-151683.004	-37697.618	8808.052464	7929.022050
8	-151712.791	-37702.694	11010.431838	8524.012776
103	-151711.339	-37711.238	11433.847266	12546.645258
102	-151681.225	-37706.116	9035.306550	11814.849324
			40287.638118	40814.529408
			平均値=	526.891290
			最大値=	263.445645

3-2 LOT

元NO. X ₀ , Y ₀ =	X	Y	(X-X ₀) (Y _{N-1} -Y ₀)	(X _{N-1} -X ₀) (Y-Y ₀)
	-151600.000	-37700.000		
4	-151680.606	-37709.070		
102	-151681.225	-37706.116	736.710750	492.986296
103	-151711.339	-37711.238	680.949324	912.806550
9	-151710.833	-37714.217	1245.541254	1582.906563
4	-151680.606	-37709.070	1145.975502	1005.255310
			3809.176830	3993.954719
			平均値=	184.777889
			最大値=	92.388745

92.39 -- 換地計画により指定

43 BLOK



43 BLOCK

NO.	X	Y	(X-X ₀)(Y _{N-1} -Y ₀)	(X _{N-1} -X ₀)(Y-Y ₀)
X ₀ , Y ₀ =	-151600.000	-37600.000		
5	-151683.004	-37697.618		
6	-151686.668	-37680.119	8460.356824	6650.197476
7	-151715.784	-37685.085	9276.498296	7374.146780
8	-151712.791	-37702.694	9596.822235	11890.322096
5	-151683.004	-37697.618	8524.012776	11010.431838
			35857.690131	36925.098190
			平均メソセキ=	1067.408059
			メソセキ=	533.704030

1 LOT

NO.	X	Y	(X-X ₀)(Y _{N-1} -Y ₀)	(X _{N-1} -X ₀)(Y-Y ₀)
X ₀ , Y ₀ =	-151600.000	-37600.000		
5	-151683.004	-37697.618		
100	-151684.824	-37688.926	8280.349232	7381.213704
101	-151714.280	-37693.932	10162.463280	7967.687968
8	-151712.791	-37702.694	10594.684212	11735.870320
5	-151683.004	-37697.618	8524.012776	11010.431838
			37561.509500	38095.203830
			平均メソセキ=	533.694330
			メソセキ=	266.847165

266.85 ... 換地計画に利権分.

2 LOT

NO.	X	Y	(X-X ₀)(Y _{N-1} -Y ₀)	(X _{N-1} -X ₀)(Y-Y ₀)
X ₀ , Y ₀ =	-151600.000	-37600.000		
100	-151684.824	-37688.926		
6	-151686.668	-37680.119	7707.038568	6796.014056
7	-151715.784	-37685.085	9276.498296	7374.146780
101	-151714.280	-37693.932	9723.513800	10875.822688
100	-151684.824	-37688.926	7967.687968	10162.463280
			34674.738632	35208.446804
			平均メソセキ=	533.708172
			メソセキ=	266.854066

***** カクヒツ メンセキ ショウケイ ヒヨウ *****

	カクヒツ	メンセキ	スミナリ
43 BLOCK		4389.51	
1 LOT		819.06	
2 LOT		533.70	
3 LOT		355.83	
4 LOT		697.90	
5 LOT		1031.88	
6 LOT		761.08	
7 LOT		88.24	
3イロ (スロ2-1号)		101.79	
1 スミナリ			4.45
2 スミナリ			4.56
ショウケイ =		4389.48	9.01

***** カクヒツ メンビキ ヲイリシ *****

45 BLOCK

アコメイ	X	Y	(X-X0)*(YN-1-Y0)	(XN-1-X0)*(Y-Y0)
X0.Y0	- 151600.000	- 37600.000		
K24	- 151628.285	- 37764.993		
K25	- 151630.490	- 37765.105	+ 5030.636570	+ 4669.994925
K26	- 151634.121	- 37762.964	+ 5633.547705	+ 4968.772360
K27	- 151637.805	- 37761.908	+ 6160.854020	+ 5524.462868
K28	- 151644.821	- 37761.427	+ 7268.212028	+ 6102.747735
K29	- 151654.383	- 37761.590	+ 8778.884541	+ 7253.936690
K30	- 151660.834	- 37736.646	+ 9830.166060	+ 7431.219418
K31	- 151666.216	- 37734.299	+ 9048.151536	+ 8169.945366
K32	- 151673.373	- 37734.047	+ 9853.920527	+ 8876.056152
K33	- 151675.356	- 37734.140	+ 10101.245732	+ 9842.254220
K34	- 151692.494	- 37652.299	+ 12407.145160	+ 3941.043444
B43-3	- 151717.597	- 37656.584	+ 6150.205503	+ 5233.680496
B43-4	- 151720.043	- 37660.028	+ 6792.513112	+ 7059.112716
B43-5	- 151700.625	- 37774.279	+ 6040.317500	+ 20920.973997
B43-6	- 151697.103	- 37776.698	+ 16923.013737	+ 17780.236250
K24	- 151628.285	- 37764.993	+ 4997.902930	+ 16021.315279
			+125016.716661	+133795.751916
		ハイメンビキ	= 8779.035255	
		メンビキ	= 4389.517627	

1 LOT

アコメイ	X	Y	(X-X0)*(YN-1-Y0)	(XN-1-X0)*(Y-Y0)
X0.Y0	- 151600.000	- 37600.000		
6	- 151686.668	- 37680.119		
K34	- 151692.494	- 37652.299	+ 7410.526786	+ 4532.649732
B43-3	- 151717.597	- 37656.584	+ 6150.205503	+ 5233.680496
B43-4	- 151720.043	- 37660.028	+ 6792.513112	+ 7059.112716
7	- 151715.784	- 37685.085	+ 6950.281952	+ 10213.858655
6	- 151686.668	- 37680.119	+ 7374.146780	+ 9276.498296
			+ 34677.674133	+ 36315.799895
		ハイメンビキ	= 1638.125762	
		メンビキ	= 819.062881	

2 LOT

アコメイ	X	Y	(X-X0)*(YN-1-Y0)	(XN-1-X0)*(Y-Y0)
X0.Y0	- 151600.000	- 37600.000		
5	- 151683.004	- 37697.618		
6	- 151686.668	- 37680.119	+ 8460.356824	+ 6650.197476
7	- 151715.784	- 37685.085	+ 9276.498296	+ 7374.146780
2	- 151712.791	- 37702.694	+ 9596.822235	+ 11890.322096
5	- 151683.004	- 37697.618	+ 8524.012776	+ 11010.431838

***** リクトツ メンベト ケイリフ *****

デコメ	X	Y	(X-X0)*(YN-1-Y0)	(XN-1-X0)*(Y-Y0)
			+ 35857.690131	+ 36925.098190
		ハイ	= 1067.408059	
		メベト	= 533.704029	

3 LOT

デコメ	X	Y	(X-X0)*(YN-1-Y0)	(XN-1-X0)*(Y-Y0)
X0.Y0	- 151600.000	- 37600.000		
4	- 151680.606	- 37709.070		
5	- 151683.004	- 37697.613	+ 9053.246280	+ 7868.596508
3	- 151712.791	- 37702.694	+ 11010.431838	+ 8524.012776
9	- 151710.833	- 37714.217	+ 11381.884102	+ 12882.649647
4	- 151680.606	- 37709.070	+ 9206.575502	+ 12088.555310
			+ 40652.137722	+ 41363.814241
		ハイ	= 711.676519	
		メベト	= 355.838259	

4 LOT

デコメ	X	Y	(X-X0)*(YN-1-Y0)	(XN-1-X0)*(Y-Y0)
X0.Y0	- 151600.000	- 37700.000		
3	- 151676.001	- 37731.059		
4	- 151680.606	- 37709.070	+ 2503.541754	+ 689.329070
9	- 151710.833	- 37714.217	+ 1005.255310	+ 1145.975502
10	- 151707.072	- 37736.346	+ 1522.242624	+ 4028.336218
3	- 151676.001	- 37731.059	+ 2762.332346	+ 3325.549248
			+ 7793.372034	+ 9189.190038
		ハイ	= 1395.818004	
		メベト	= 697.909002	

5 LOT

デコメ	X	Y	(X-X0)*(YN-1-Y0)	(XN-1-X0)*(Y-Y0)
X0.Y0	- 151600.000	- 37700.000		
2	- 151656.853	- 37752.037		
K30	- 151660.834	- 37736.646	+ 3165.618858	+ 2083.435038
K31	- 151666.216	- 37734.299	+ 2426.551536	+ 2086.545366
K32	- 151673.373	- 37734.047	+ 2516.620527	+ 2254.456152
K33	- 151675.356	- 37734.140	+ 2565.645732	+ 2504.954220
3	- 151676.001	- 37731.059	+ 2594.674140	+ 2340.482004
10	- 151707.072	- 37736.346	+ 3325.549248	+ 2762.332346
11	- 151703.066	- 37759.913	+ 3746.036836	+ 6415.540096
2	- 151656.853	- 37752.037	+ 3406.518054	+ 5363.245442
			+ 23747.214931	+ 25810.990664
		ハイ	= 2063.775733	
		メベト	= 1031.887866	

***** カクヒツ メンベキ クイサコ *****

5 LOT

アノメイ	X	Y	(X-X0)*(YN-1-Y0)	(XN-1-X0)*(Y-Y0)
X0.Y0	- 151600.000	- 37700.000		
1	- 151653.334	- 37767.729		
K29	- 151654.383	- 37761.590	+ 3683.306207	+ 3284.841060
2	- 151656.853	- 37752.037	+ 3501.576270	+ 2829.928171
11	- 151703.066	- 37759.918	+ 5363.245442	+ 3406.518054
B43-5	- 151700.625	- 37774.279	+ 6029.248750	+ 7655.639414
B43-8	- 151698.857	- 37775.493	+ 7342.999103	+ 7596.483125
1	- 151653.334	- 37767.729	+ 4026.343662	+ 6695.485753
			+ 29946.719434	+ 31468.895577
		ハイ メンベキ	= 1522.176143	
		メンベキ	= 761.088071	

7 LOT

アノメイ	X	Y	(X-X0)*(YN-1-Y0)	(XN-1-X0)*(Y-Y0)
X0.Y0	- 151600.000	- 37700.000		
B43-9	- 151632.165	- 37764.118		
K26	- 151634.121	- 37762.964	+ 2187.770278	+ 2025.237060
K27	- 151637.805	- 37761.908	+ 2380.354020	+ 2112.362868
K28	- 151644.891	- 37761.427	+ 2779.112028	+ 2322.247735
K29	- 151654.383	- 37761.590	+ 3340.584541	+ 2764.836690
1	- 151653.334	- 37767.729	+ 3284.841060	+ 3683.306207
B43-9	- 151632.165	- 37764.118	+ 2178.503285	+ 3419.669412
			+ 16151.165212	+ 16327.659972
		ハイ メンベキ	= 176.494760	
		メンベキ	= 88.247380	

310 (K43-1号)

アノメイ	X	Y	(X-X0)*(YN-1-Y0)	(XN-1-X0)*(Y-Y0)
X0.Y0	- 151600.000	- 37700.000		
K24	- 151628.285	- 37764.993		
K25	- 151630.499	- 37765.105	+ 1981.636570	+ 1841.494925
B43-9	- 151632.165	- 37764.118	+ 2094.102325	+ 1954.957820
B43-8	- 151698.857	- 37775.493	+ 6338.513126	+ 2428.232345
B43-6	- 151697.103	- 37776.698	+ 7330.596779	+ 7582.134186
K24	- 151628.285	- 37764.993	+ 2169.402930	+ 6311.015279
			+ 19914.251730	+ 20117.834555
		ハイ メンベキ	= 203.582825	
		メンベキ	= 101.791412	

1 319

アノメイ	X	Y	(X-X0)*(YN-1-Y0)	(XN-1-X0)*(Y-Y0)
X0.Y0	- 151700.000	- 37600.000		
B43-1	- 151720.543	- 37657.087		
B43-3	- 151717.597	- 37656.584	+ 1004.559939	+ 1162.405112

***** カクヒツ メンセキ リイザン *****

アノメイ	X	Y	(X-X0)*(YN-1-Y0)	(XN-1-X0)*(Y-Y0)
343-4	- 151720.043	- 37660.028	+ 1134.113112	+ 1056.312716
343-1	- 151720.543	- 37657.087	+ 1233.155204	+ 1144.194741
			+ 3371.828255	+ 3362.912569
		ハイ	= 8.915686	
		メソセキ	= 4.457843	

2 343-1

アノメイ	X	Y	(X-X0)*(YN-1-Y0)	(XN-1-X0)*(Y-Y0)
X0, Y0	- 151600.000	- 37700.000		
343-2	- 151700.127	- 37777.212		
343-5	- 151700.625	- 37774.279	+ 7769.457500	+ 7437.333433
343-6	- 151697.103	- 37776.698	+ 7212.713737	+ 7717.736250
343-2	- 151700.127	- 37777.212	+ 7679.540646	+ 7497.516836
			+ 22661.711883	+ 22652.586519
		ハイ	= 9.125364	
		メソセキ	= 4.562682	