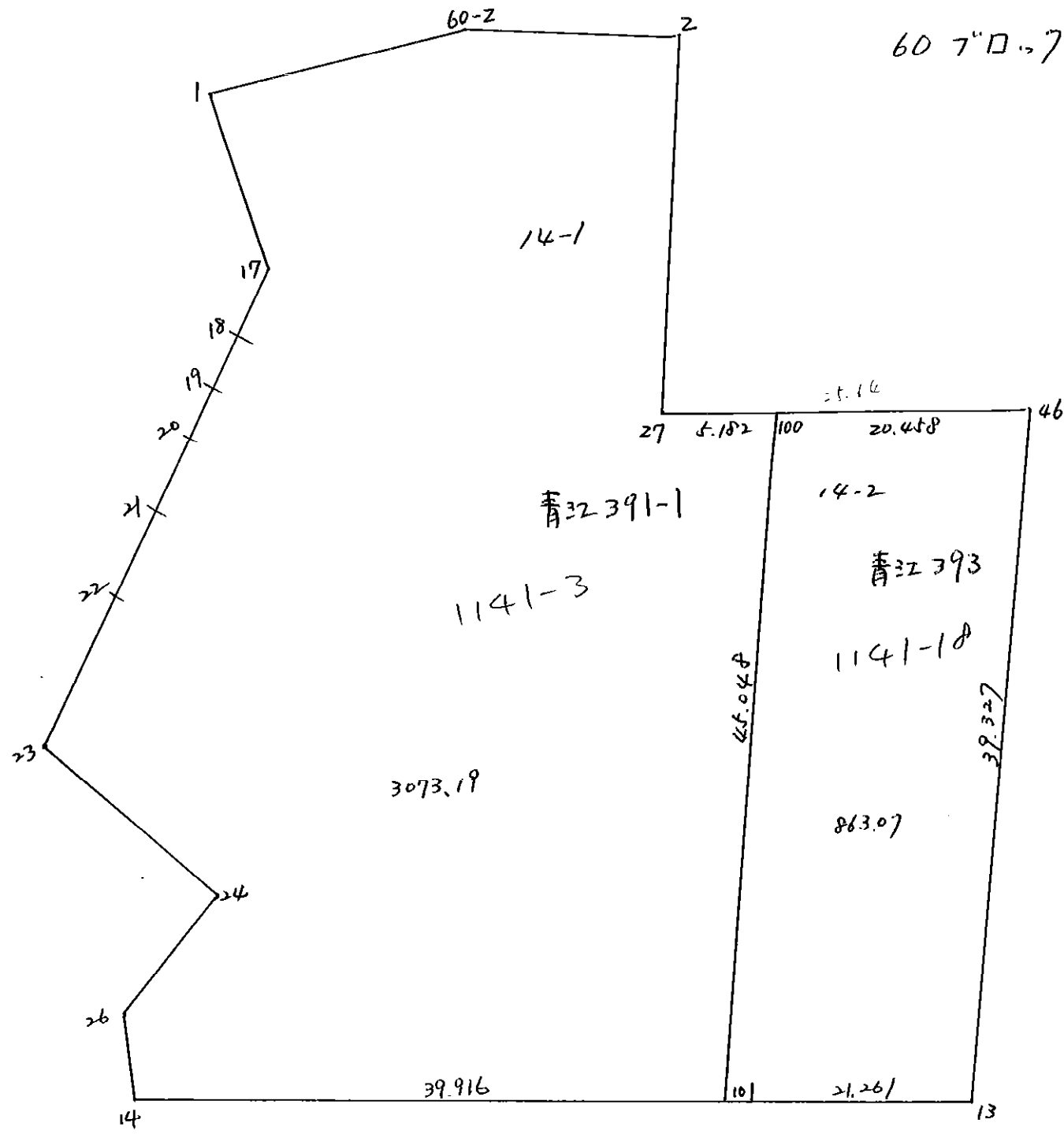


60 7"口 14 口 卜



***** マンセキケイザン *****

シウケイ ヒョウ			
60 BLOCK		3936.260441	
14-1 LOT		3073.189220	
14-2 LOT		863.072451	
ゴウケイ		3936.261671	0.000000

* * * * * シ セ キ ケ イ サ シ * * * * *

60 BLOCK

7) NO.	X	Y	(X-X ₀) (Y-Y ₀)	(XN-1-X ₀) (Y-Y ₀)
X ₀ , Y ₀ =	-151700.000	-37800.000		
1	-151717.858	-37869.571		
202 60-Z	-151709.128	-37851.738	635.044088	923.937204
2	-151708.988	-37844.239	465.021144	403.813592
27	-151755.882	-37848.370	2472.163798	434.749560
46	-151757.909	-37822.810	2801.058330	1274.668420
13	-151797.103	-37826.048	2214.919430	1508.413632
14	-151808.854	-37886.086	2835.428992	8359.208858
26	-151801.384	-37887.626	8727.743024	9538.440604
24	-151767.911	-37875.158	5950.769286	7619.818672
23	-151759.483	-37891.673	4470.623314	6225.605103
22	-151753.451	-37887.831	4900.013523	5224.451373
21	-151751.896	-37886.708	4558.077576	4634.629308
20	-151749.532	-37884.804	4294.820656	4400.988384
19	-151738.381	-37875.142	3254.862324	3721.933544
18	-151733.085	-37870.050	2486.073070	2688.589050
17	-151726.853	-37865.197	1881.052650	2157.042745
1	-151717.858	-37869.571	1164.288026	1868.190063
			53111.959231	60984.480112
			1) イノセキ=	7872.520881
			ノセキ=	3936.260441

14-1 LOT

7) NO.	X	Y	(X-X ₀) (Y-Y ₀)	(XN-1-X ₀) (Y-Y ₀)
X ₀ , Y ₀ =	-151700.000	-37800.000		
1	-151717.858	-37869.571		
202 60-Z	-151709.128	-37851.738	635.044088	923.937204
2	-151708.988	-37844.239	465.021144	403.813592
27	-151755.882	-37848.370	2472.163798	434.749560
100	-151756.292	-37843.204	2722.844040	2414.325928
101	-151801.187	-37846.913	4371.683148	2640.826596
14	-151808.854	-37886.086	5106.667702	8710.784082
26	-151801.384	-37887.626	8727.743024	9538.440604
24	-151767.911	-37875.158	5950.769286	7619.818672
23	-151759.483	-37891.673	4470.623314	6225.605103
22	-151753.451	-37887.831	4900.013523	5224.451373
21	-151751.896	-37886.708	4558.077576	4634.629308
20	-151749.532	-37884.804	4294.820656	4400.988384
19	-151738.381	-37875.142	3254.862324	3721.933544
18	-151733.085	-37870.050	2486.073070	2688.589050
17	-151726.853	-37865.197	1881.052650	2157.042745
1	-151717.858	-37869.571	1164.288026	1868.190063
			57461.747369	63608.125808
			1) イノセキ=	6146.378439
			ノセキ=	3073.169220
				3073.19 -- 換地計画 1: 按分 1=列

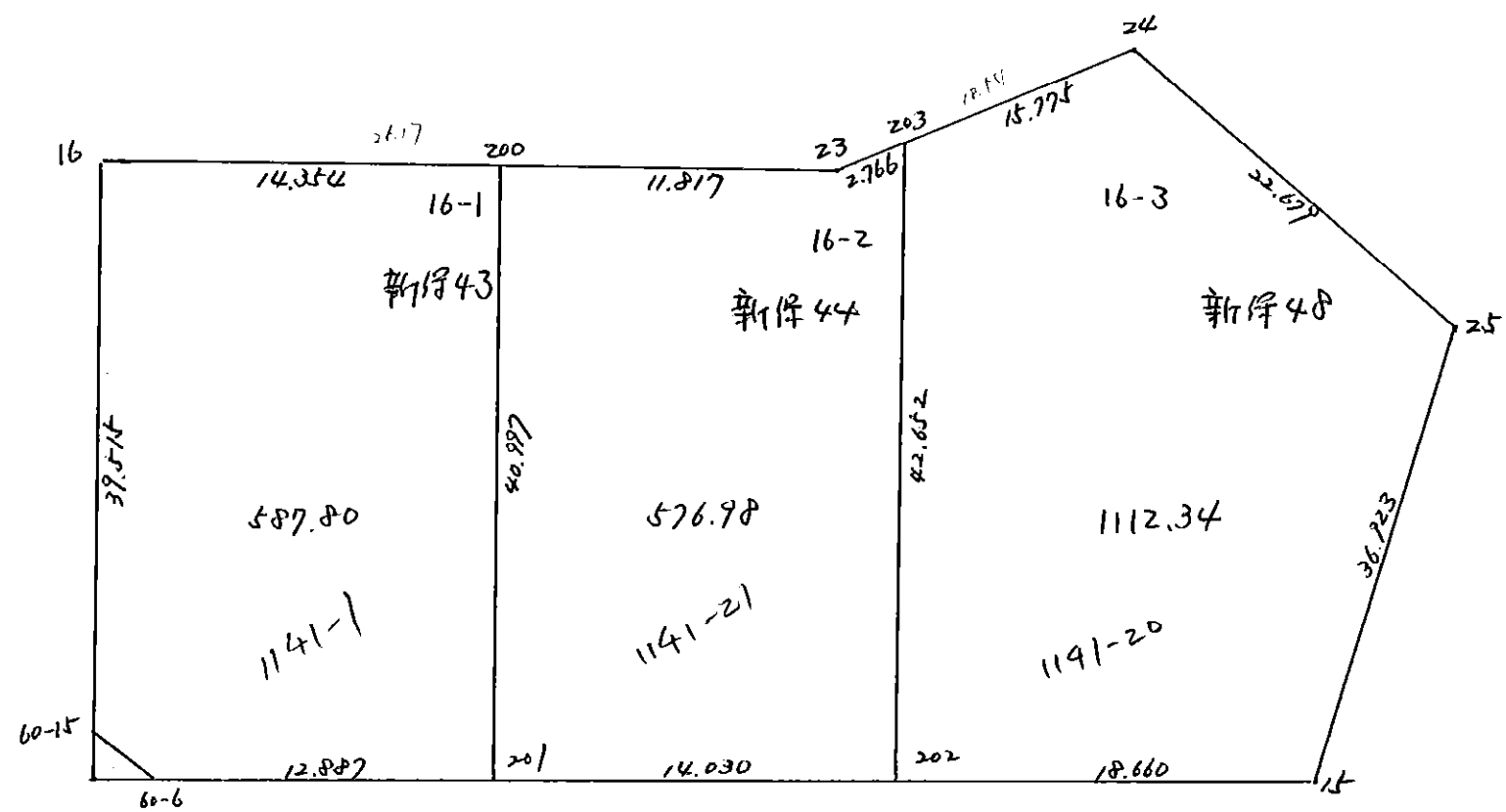
*** インセキ ケイサン ***

14-2 LOT

元NO. X ₀ , Y ₀ =	X	Y	(X-X ₀) (YN-1-Y ₀)	(XN-1-X ₀) (Y-Y ₀)
100	-151700.000	-37800.000		
46	-151756.292	-37843.204		
13	-151757.909	-37822.810	2501.900436	1284.020520
101	-151797.103	-37826.048	2214.919430	1508.413632
100	-151801.187	-37846.913	2635.718976	4555.393039
	-151756.292	-37843.204	2640.826596	4371.683148
			9993.365438	11719.510339
			インセキ=	1726.144901
			メセキ=	863.072451

60 70...7

16 0...ト



*** マシセキ ケイサン ***

シウケイ ヒヤウ

60 BLOCK

2277.120590

16-2 LOT

576.983105

16-3 LOT

1112.352493

16-1 LOT

587.803021

ゴウケイ

2277.138619

0.000000

60 BLOCK

元NO.	X	Y	(X-X ₀) (YN-1-Y ₀)	(XN-1-X ₀) (Y-Y ₀)
X ₀ , Y ₀ =	-151700.000	-37800.000		
16	-151735.975	-37903.175		
23	-151759.483	-37891.673	6137.158525	3297.936175
24	-151767.911	-37875.158	6225.605103	4470.623314
25	-151789.163	-37883.074	6701.312754	5641.638414
15	-151796.257	-37919.309	7996.454018	10637.948367
10660-6	-151755.323	-37939.353	6600.531807	13413.701721
11560-15	-151753.336	-37938.673	7432.531608	7671.806379
16	-151735.975	-37903.175	4988.761175	5502.941800
			46082.354990	50636.596170
			平均X座標=	4554.241180
			平均Y座標=	2277.120590

16-2 LOT

元NO.	X	Y	(X-X ₀) (YN-1-Y ₀)	(XN-1-X ₀) (Y-Y ₀)
X ₀ , Y ₀ =	-151700.000	-37800.000		
200	-151748.868	-37896.866		
23	-151759.483	-37891.673	5761.880278	4479.876164
203	-151760.740	-37889.209	5568.218020	5306.418947
202	-151779.498	-37927.515	7091.937082	7745.261100
201	-151766.898	-37933.686	8530.498470	10627.769628
200	-151748.868	-37896.866	6532.967448	6480.141668
			33485.501298	34639.467507
			平均X座標=	1153.966209
			平均Y座標=	576.983105

16-3 LOT

元NO.	X	Y	(X-X ₀) (YN-1-Y ₀)	(XN-1-X ₀) (Y-Y ₀)
X ₀ , Y ₀ =	-151700.000	-37800.000		
203	-151760.740	-37889.209		
24	-151767.911	-37875.158	6058.272399	4565.096920
25	-151789.163	-37883.074	6701.312754	5641.638414
15	-151796.257	-37919.309	7996.454018	10637.948367
202	-151779.498	-37927.515	9484.826882	12274.211355
203	-151760.740	-37889.209	7745.261100	7091.937082
			37986.127153	40210.832138
			平均X座標=	2224.704985
			平均Y座標=	1112.352493

1112.34 ... 換地計画(按分)に於

*** シ ン セ キ ケ イ サ ン ***

16-1 LOT

FLNO.	X	Y	(X-X ₀) (YN-1-Y ₀)	(XN-1-X ₀) (Y-Y ₀)
X ₀ , Y ₀ =	-151700.000	-37800.000		
16	-151735.975	-37903.175		
200	-151748.868	-37896.866	5041.955900	3484.754350
201	-151766.898	-37933.686	6480.141668	6532.967448
106 60-6	-151755.323	-37939.353	7395.910578	9322.436994
115 60-15	-151753.336	-37938.673	7432.531608	7671.906379
16	-151735.975	-37903.175	4988.761175	5502.941800
			31339.300929	32514.906971
			ハイムセキ=	1175.606042
			ムセキ=	587.803021

***** カクヒツ メンセキ コウケイ ヒヨウ *****

カクヒツ . カクヒツ

カクヒツ メンセキ

入ミナリ メンセキ

60 BLOCK

11309.75

1 LOT 967.06
2 LOT 205.75
3 LOT 195.60
4 LOT 143.35
5 LOT 172.88
6 LOT 133.45
7 LOT 36.84
8 LOT 36.71
9 LOT 126.05
10 LOT 39.68
11 LOT 200.02
12 LOT 165.45
13 LOT 134.31
14 LOT 3936.26
15 LOT 551.08
16 LOT 2277.12
17 LOT 699.31
18 LOT 1230.33
入付 (2106-2号) 58.43

1 入ミナリ 4.39
3 入ミナリ 4.21
4 入ミナリ 4.07
5 入ミナリ 4.33

コウケイ =

11309.68

17.00

***** カクヒツ メンヒホ ケイリコ *****

60 BLOCK

デジメイ	X	Y	(X-X0)*(YN-1-Y0)	(XN-1-X0)*(Y-Y0)
X0.Y0	- 151700.000	- 37700.000		
B60-6	- 151755.323	- 37939.353		
B60-7	- 151751.355	- 37937.995	+ 12291.973315	+ 13166.597385
B60-2	- 151709.128	- 37851.738	+ 2172.418360	+ 7792.504990
B60-8	- 151707.942	- 37798.115	+ 1205.103196	+ 804.313720
B60-9	- 151710.776	- 37785.680	+ 949.527240	+ 680.470560
B60-10	- 151788.986	- 37798.960	+ 7624.320480	+ 1066.392960
B60-11	- 151792.465	- 37802.350	+ 9150.336400	+ 9107.717100
B60-12	- 151813.111	- 37907.838	+ 11576.910850	+ 19217.740670
B60-13	- 151810.991	- 37912.094	+ 23068.147458	+ 23990.164434
B60-6	- 151755.323	- 37939.353	+ 11733.676362	+ 26566.028823
			+ 79777.413661	+102391.930642
		ハイ メンヒホ	= 22619.516281	
		メンヒホ	= 11309.758490	

1 LOT

デジメイ	X	Y	(X-X0)*(YN-1-Y0)	(XN-1-X0)*(Y-Y0)
X0.Y0	- 151700.000	- 37700.000		
3	- 151708.515	- 37818.822		
B60-8	- 151707.942	- 37788.115	+ 943.684324	+ 750.299225
B60-9	- 151710.776	- 37785.680	+ 949.527240	+ 680.470560
4	- 151739.603	- 37790.575	+ 3393.185040	+ 976.036200
29	- 151737.046	- 37821.013	+ 3355.441450	+ 4792.477839
28	- 151737.030	- 37821.195	+ 4481.111390	+ 4489.789970
3	- 151708.515	- 37818.822	+ 1031.975425	+ 4399.978660
			+ 14154.924869	+ 16089.052454
		ハイ メンヒホ	= 1934.127585	
		メンヒホ	= 967.063792	

2 LOT

デジメイ	X	Y	(X-X0)*(YN-1-Y0)	(XN-1-X0)*(Y-Y0)
X0.Y0	- 151700.000	- 37700.000		
29	- 151737.046	- 37821.013		
4	- 151739.603	- 37790.575	+ 4792.477839	+ 3355.441450
5	- 151746.326	- 37791.717	+ 4195.977450	+ 3632.268351
30	- 151743.822	- 37821.600	+ 4019.222374	+ 5633.241600
29	- 151737.046	- 37821.013	+ 4504.793600	+ 5303.031686
			+ 17512.471263	+ 17923.983087
		ハイ メンヒホ	= 411.511824	
		メンヒホ	= 205.755912	

***** カクヒツ メンセキ ケイリョウ *****

3 LOT

テラメイ X0.Y0	X	Y	(X-X0)*(YN-1-Y0)	(XN-1-X0)*(Y-Y0)
30	- 151743.822	- 37821.600		
5	- 151746.326	- 37791.717	+ 5633.241600	+ 4019.222374
6	- 151752.832	- 37792.821	+ 4845.592544	+ 4300.025646
31	- 151750.386	- 37822.169	+ 4676.878906	+ 6454.432608
30	- 151743.822	- 37821.600	+ 5353.689918	+ 6126.937600
			+ 20509.402968	+ 20900.618228
ハイ メンセキ			= 391.215260	
メンセキ			= 195.607630	

4 LOT

テラメイ X0.Y0	X	Y	(X-X0)*(YN-1-Y0)	(XN-1-X0)*(Y-Y0)
31	- 151750.386	- 37822.169		
6	- 151752.832	- 37792.821	+ 6454.432608	+ 4676.878906
7	- 151757.690	- 37793.646	+ 5354.843490	+ 4947.505472
35	- 151756.175	- 37811.613	+ 5260.564050	+ 6438.953970
32	- 151755.279	- 37822.593	+ 6169.855027	+ 6886.661775
31	- 151750.386	- 37822.169	+ 6176.970898	+ 6753.380151
			+ 29416.666073	+ 29703.380274
ハイ メンセキ			= 286.714201	
メンセキ			= 143.357100	

5 LOT

テラメイ X0.Y0	X	Y	(X-X0)*(YN-1-Y0)	(XN-1-X0)*(Y-Y0)
35	- 151756.175	- 37811.613		
7	- 151757.690	- 37793.646	+ 6438.953970	+ 5260.564050
?	- 151765.475	- 37794.968	+ 6131.471850	+ 5478.703920
45	- 151767.311	- 37797.282	+ 6322.391048	+ 6369.538950
46	- 151766.150	- 37812.409	+ 6435.204300	+ 7566.362199
35	- 151756.175	- 37811.613	+ 6314.575575	+ 7383.199950
			+ 31712.596743	+ 32058.369069
ハイ メンセキ			= 345.772326	
メンセキ			= 172.886163	

6 LOT

テラメイ X0.Y0	X	Y	(X-X0)*(YN-1-Y0)	(XN-1-X0)*(Y-Y0)
32	- 151755.279	- 37822.593		
35	- 151756.175	- 37811.613	+ 1269.161775	+ 641.955027

***** カクヒツ メンベキ ケイリコ *****

テコメイ	X	Y	(X-X0)*(YN-1-Y0)	(XN-1-X0)*(Y-Y0)
36	- 151766.150	- 37812.409	+ 768.199950	+ 697.075575
37	- 151768.193	- 37812.583	+ 846.206937	+ 832.365450
33	- 151767.375	- 37823.592	+ 847.779625	+ 1608.809256
32	- 151755.279	- 37822.593	+ 1304.142168	+ 1522.203375
			+ 5035.490455	+ 5302.408683
		ハイ メンベキ	= 266.918228	
		メンベキ	= 133.459114	

7 LOT

テコメイ	X	Y	(X-X0)*(YN-1-Y0)	(XN-1-X0)*(Y-Y0)
X0.Y0	- 151700.000	- 37700.000		
36	- 151766.150	- 37812.409		
45	- 151767.311	- 37797.282	+ 7566.362199	+ 6435.204300
3	- 151765.475	- 37794.968	+ 6369.538950	+ 6392.391048
9	- 151769.476	- 37795.647	+ 6597.996768	+ 6262.487325
37	- 151768.193	- 37812.583	+ 6522.455871	+ 7821.816508
36	- 151766.150	- 37812.409	+ 7447.365450	+ 7665.506937
			+ 34503.719238	+ 34577.406118
		ハイ メンベキ	= 73.686880	
		メンベキ	= 36.843440	

8 LOT

テコメイ	X	Y	(X-X0)*(YN-1-Y0)	(XN-1-X0)*(Y-Y0)
X0.Y0	- 151700.000	- 37700.000		
37	- 151768.193	- 37812.583		
9	- 151769.476	- 37795.647	+ 7821.816508	+ 6522.455871
10	- 151773.476	- 37796.326	+ 7027.758972	+ 6692.345176
44	- 151771.367	- 37797.975	+ 6874.497642	+ 7198.811100
38	- 151770.236	- 37812.757	+ 6881.372100	+ 8047.128819
37	- 151768.193	- 37812.583	+ 7689.238101	+ 7907.379588
			+ 36294.683323	+ 36368.120554
		ハイ メンベキ	= 73.437231	
		メンベキ	= 36.718615	

9 LOT

テコメイ	X	Y	(X-X0)*(YN-1-Y0)	(XN-1-X0)*(Y-Y0)
X0.Y0	- 151700.000	- 37700.000		
43	- 151770.842	- 37804.842		
44	- 151771.367	- 37797.975	+ 7482.259014	+ 6940.744950
10	- 151773.476	- 37796.326	+ 7198.811100	+ 6874.497642
11	- 151781.706	- 37797.724	+ 7870.412156	+ 7180.368624
40	- 151780.392	- 37813.619	+ 7855.250568	+ 9283.354014

***** カクセツ、モンセキ、ケイサツ *****

テラメイ	X	Y	(X-X0)*(YN-1-Y0)	(XN-1-X0)*(Y-Y0)
39	- 151775.223	- 37813.180	+ 8546.762037	+ 9097.634760
42	- 151775.818	- 37805.266	+ 8581.081240	+ 7918.424318
43	- 151770.842	- 37804.842	+ 7457.253972	+ 7948.910756
			+ 54991.830087	+ 55243.935064
		ハイ	= 252.104977	
		メロセキ	= 126.052488	

10 LOT

テラメイ	X	Y	(X-X0)*(YN-1-Y0)	(XN-1-X0)*(Y-Y0)
X0.Y0	- 151700.000	- 37800.000		
38	- 151770.236	- 37812.757		
43	- 151770.842	- 37804.842	+ 903.731394	+ 340.082712
42	- 151775.818	- 37805.266	+ 367.110756	+ 373.053972
39	- 151775.223	- 37813.180	+ 396.124318	+ 999.281240
38	- 151770.236	- 37812.757	+ 925.710480	+ 959.619811
			+ 2592.676948	+ 2672.037735
		ハイ	= 79.360787	
		メロセキ	= 39.680393	

11 LOT

テラメイ	X	Y	(X-X0)*(YN-1-Y0)	(XN-1-X0)*(Y-Y0)
X0.Y0	- 151700.000	- 37700.000		
41	- 151780.312	- 37814.453		
11	- 151781.706	- 37797.724	+ 9351.496818	+ 7848.409888
060-10	- 151788.986	- 37798.960	+ 8696.067864	+ 8085.625760
060-11	- 151792.465	- 37802.350	+ 9150.336400	+ 9107.717100
12	- 151795.069	- 37815.657	+ 9730.312150	+ 10694.224505
41	- 151780.312	- 37814.453	+ 9288.644984	+ 10880.932257
			+ 46216.858216	+ 46616.909510
		ハイ	= 400.051294	
		メロセキ	= 200.025647	

12 LOT

テラメイ	X	Y	(X-X0)*(YN-1-Y0)	(XN-1-X0)*(Y-Y0)
X0.Y0	- 151700.000	- 37800.000		
34	- 151779.467	- 37824.591		
41	- 151780.312	- 37814.453	+ 1974.952392	+ 1148.536551
12	- 151795.069	- 37815.657	+ 1374.032257	+ 1257.444984
13	- 151797.103	- 37826.048	+ 1520.341671	+ 2476.357312
34	- 151779.467	- 37824.591	+ 2069.956416	+ 2387.859873
			+ 6939.282736	+ 7270.198720
		ハイ	= 330.915984	
		メロセキ	= 165.457992	

***** カクヒツ メンセキ ケイサツ *****

13 LOT

テコメイ	X	Y	(X-X0)*(YN-1-Y0)	(XN-1-X0)*(Y-Y0)
X0.Y0	- 151700.000	- 37800.000		
33	- 151767.375	- 37823.592		
37	- 151768.193	- 37812.583	+ 1608.809256	+ 847.779625
40	- 151780.382	- 37813.619	+ 1011.446706	+ 928.720467
34	- 151779.467	- 37824.591	+ 1082.261073	+ 1976.673762
33	- 151767.375	- 37823.592	+ 1656.818625	+ 1874.785464
			+ 5359.335660	+ 5627.959318
		ハイ メンセキ	= 268.623658	
		メンセキ	= 134.311829	

14 LOT

テコメイ	X	Y	(X-X0)*(YN-1-Y0)	(XN-1-X0)*(Y-Y0)
X0.Y0	- 151700.000	- 37800.000		
1	- 151717.858	- 37869.571		
360-2	- 151709.128	- 37851.738	+ 635.044088	+ 923.937204
2	- 151708.988	- 37844.239	+ 465.021144	+ 403.813592
27	- 151755.882	- 37848.370	+ 2472.163798	+ 434.749560
46	- 151757.909	- 37822.810	+ 2801.058330	+ 1274.668420
13	- 151797.103	- 37826.048	+ 2214.919430	+ 1508.413632
14	- 151808.854	- 37886.086	+ 2835.428992	+ 8359.208858
26	- 151801.384	- 37887.626	+ 8727.743024	+ 9538.440604
24	- 151767.911	- 37875.158	+ 5950.769286	+ 7619.818672
23	- 151759.483	- 37891.673	+ 4470.623314	+ 6225.605103
22	- 151753.451	- 37887.831	+ 4900.013523	+ 5224.451373
21	- 151751.896	- 37886.708	+ 4558.077576	+ 4634.629308
20	- 151749.532	- 37884.804	+ 4294.820656	+ 4400.988384
19	- 151738.381	- 37875.142	+ 3254.862324	+ 3721.933544
18	- 151733.085	- 37870.050	+ 2486.073070	+ 2688.589050
17	- 151726.853	- 37865.197	+ 1881.052650	+ 2157.042745
1	- 151717.858	- 37869.571	+ 1164.288026	+ 1868.190063
			+ 53111.959231	+ 60984.480112
		ハイ メンセキ	= 7872.520881	
		メンセキ	= 3936.260440	

15 LOT

テコメイ	X	Y	(X-X0)*(YN-1-Y0)	(XN-1-X0)*(Y-Y0)
X0.Y0	- 151700.000	- 37800.000		
15	- 151796.257	- 37919.309		
25	- 151789.163	- 37883.074	+ 10637.948367	+ 7996.454018
26	- 151801.384	- 37887.626	+ 8422.374416	+ 7812.997038
14	- 151808.854	- 37886.086	+ 9538.440604	+ 8727.743024
360-12	- 151813.111	- 37907.838	+ 9737.273546	+ 11738.597652

***** カクヒツ メンベキ ケイサク *****

アソメイ	X	Y	(X-X0)*(YN-1-Y0)	(XN-1-X0)*(Y-Y0)
X0.Y0	- 151810.991	- 37912.094	+ 11969.047458	+ 12679.064434
B60-13	- 151796.257	- 37919.309	+ 10789.832158	+ 13242.225219
			+ 61094.916549	+ 62197.081385
		ハイ メンベキ	= 1102.164836	
		メンベキ	= 551.082418	

16 LOT

アソメイ	X	Y	(X-X0)*(YN-1-Y0)	(XN-1-X0)*(Y-Y0)
X0.Y0	- 151700.000	- 37800.000		
B60-6	- 151755.323	- 37939.353		
B60-15	- 151753.336	- 37938.673	+ 7432.531608	+ 7671.806379
16	- 151735.975	- 37903.175	+ 4988.761175	+ 5502.941800
23	- 151759.483	- 37891.673	+ 6137.158525	+ 3297.936175
24	- 151767.911	- 37875.158	+ 6225.605103	+ 4470.623314
25	- 151789.163	- 37883.074	+ 6701.312754	+ 5641.638414
15	- 151796.257	- 37919.309	+ 7996.454018	+ 10637.948367
B60-6	- 151755.323	- 37939.353	+ 6600.531807	+ 13413.701721
			+ 46082.354990	+ 50636.596170
		ハイ メンベキ	= 4554.241180	
		メンベキ	= 2277.120590	

17 LOT

アソメイ	X	Y	(X-X0)*(YN-1-Y0)	(XN-1-X0)*(Y-Y0)
X0.Y0	- 151700.000	- 37800.000		
16	- 151735.975	- 37903.175		
B60-16	- 151735.765	- 37902.746	+ 3690.053875	+ 3696.287350
B60-17	- 151734.433	- 37903.430	+ 3537.853018	+ 3699.173950
1	- 151717.858	- 37869.571	+ 1847.052940	+ 2395.538243
17	- 151726.853	- 37865.197	+ 1868.190063	+ 1164.288026
18	- 151733.085	- 37870.050	+ 2157.042745	+ 1881.052650
19	- 151738.381	- 37875.142	+ 2688.589050	+ 2486.073070
20	- 151749.532	- 37884.804	+ 3721.933544	+ 3254.862324
21	- 151751.896	- 37886.708	+ 4400.988384	+ 4294.820656
22	- 151753.451	- 37887.831	+ 4634.629308	+ 4558.077576
23	- 151759.483	- 37891.673	+ 5224.451373	+ 4900.013523
16	- 151735.975	- 37903.175	+ 3297.936175	+ 6137.158525
			+ 37068.720475	+ 38467.345893
		ハイ メンベキ	= 1398.625418	
		メンベキ	= 699.312709	

18 LOT

アソメイ	X	Y	(X-X0)*(YN-1-Y0)	(XN-1-X0)*(Y-Y0)
X0.Y0	- 151700.000	- 37800.000		
2	- 151708.988	- 37844.239		
7	- 151708.515	- 37818.822	+ 376.695085	+ 169.172136

***** カクヒツ メンベキ ケイザン *****

アノメイ	X	Y	(X-X0)*(YN-1-Y0)	(XN-1-X0)*(Y-Y0)
28	- 151737.030	- 37821.195	+ 696.978660	+ 180.475425
29	- 151737.046	- 37821.013	+ 785.189970	+ 778.111390
32	- 151755.279	- 37822.593	+ 1161.577627	+ 836.980278
46	- 151757.909	- 37822.810	+ 1308.338037	+ 1260.913990
27	- 151755.882	- 37848.370	+ 1274.668420	+ 2801.058330
2	- 151708.988	- 37844.239	+ 434.749560	+ 2472.163798
			+ 6038.197359	+ 8498.875347
		ハイ メンベキ	= 2460.677988	
		メンベキ	= 1230.338994	

スロ(スロ6-2号)

アノメイ	X	Y	(X-X0)*(YN-1-Y0)	(XN-1-X0)*(Y-Y0)
X0.Y0	- 151700.000	- 37900.000		
B60-7	- 151751.355	- 37937.995		
B60-17	- 151734.433	- 37903.430	+ 1308.281835	+ 176.147650
B60-16	- 151735.765	- 37902.746	+ 122.673950	+ 94.553018
B60-15	- 151753.336	- 37938.673	+ 146.460656	+ 1383.139845
B60-7	- 151751.355	- 37937.995	+ 1986.051915	+ 2026.501320
			+ 3563.468356	+ 3680.341833
		ハイ メンベキ	= 116.873477	
		メンベキ	= 58.436738	

1 スミナリ

アノメイ	X	Y	(X-X0)*(YN-1-Y0)	(XN-1-X0)*(Y-Y0)
X0.Y0	- 151700.000	- 37900.000		
B60-1	- 151752.659	- 37940.658		
B60-6	- 151755.323	- 37939.353	+ 2249.322534	+ 2072.289627
B60-7	- 151751.355	- 37937.995	+ 2020.973315	+ 2101.997385
B60-1	- 151752.659	- 37940.658	+ 2000.778705	+ 2087.991590
			+ 6271.074554	+ 6262.278602
		ハイ メンベキ	= 8.795952	
		メンベキ	= 4.397976	

3 スミナリ

アノメイ	X	Y	(X-X0)*(YN-1-Y0)	(XN-1-X0)*(Y-Y0)
X0.Y0	- 151700.000	- 37700.000		
B60-3	- 151707.887	- 37785.189		
B60-8	- 151707.942	- 37788.115	+ 676.571038	+ 694.963005
B60-9	- 151710.776	- 37785.680	+ 949.527240	+ 680.470560
B60-3	- 151707.887	- 37785.189	+ 675.758160	+ 917.996664
			+ 2301.856438	+ 2293.430229
		ハイ メンベキ	= 8.426209	
		メンベキ	= 4.213104	

***** カクヒツ メンセキ ケイザン *****

4. スミナリ

テコメイ	X	Y	(X-X0)*(YN-1-Y0)	(XN-1-X0)*(Y-Y0)
X0.Y0	- 151700.000	- 37700.000		
B60-4	- 151791.898	- 37729.455		
B60-10	- 151788.986	- 37798.960	+ 8850.102630	+ 9094.226080
B60-11	- 151792.465	- 37802.350	+ 9150.336400	+ 9107.717100
B60-4	- 151791.898	- 37799.455	+ 9405.760300	+ 9196.106575
			+ 27406.199330	+ 27398.049755
		ハヤイ メンセキ =	8.149575	
		メソセキ =	4.074787	

5. スミナリ

テコメイ	X	Y	(X-X0)*(YN-1-Y0)	(XN-1-X0)*(Y-Y0)
X0.Y0	- 151800.000	- 37900.000		
B60-5	- 151813.686	- 37910.774		
B60-12	- 151813.111	- 37907.838	+ 141.257214	+ 107.270868
B60-13	- 151810.991	- 37912.094	+ 86.147458	+ 158.564434
B60-5	- 151813.686	- 37910.774	+ 165.518484	+ 118.417034
			+ 392.923856	+ 384.252336
		ハヤイ メンセキ =	8.671520	
		メソセキ =	4.335760	