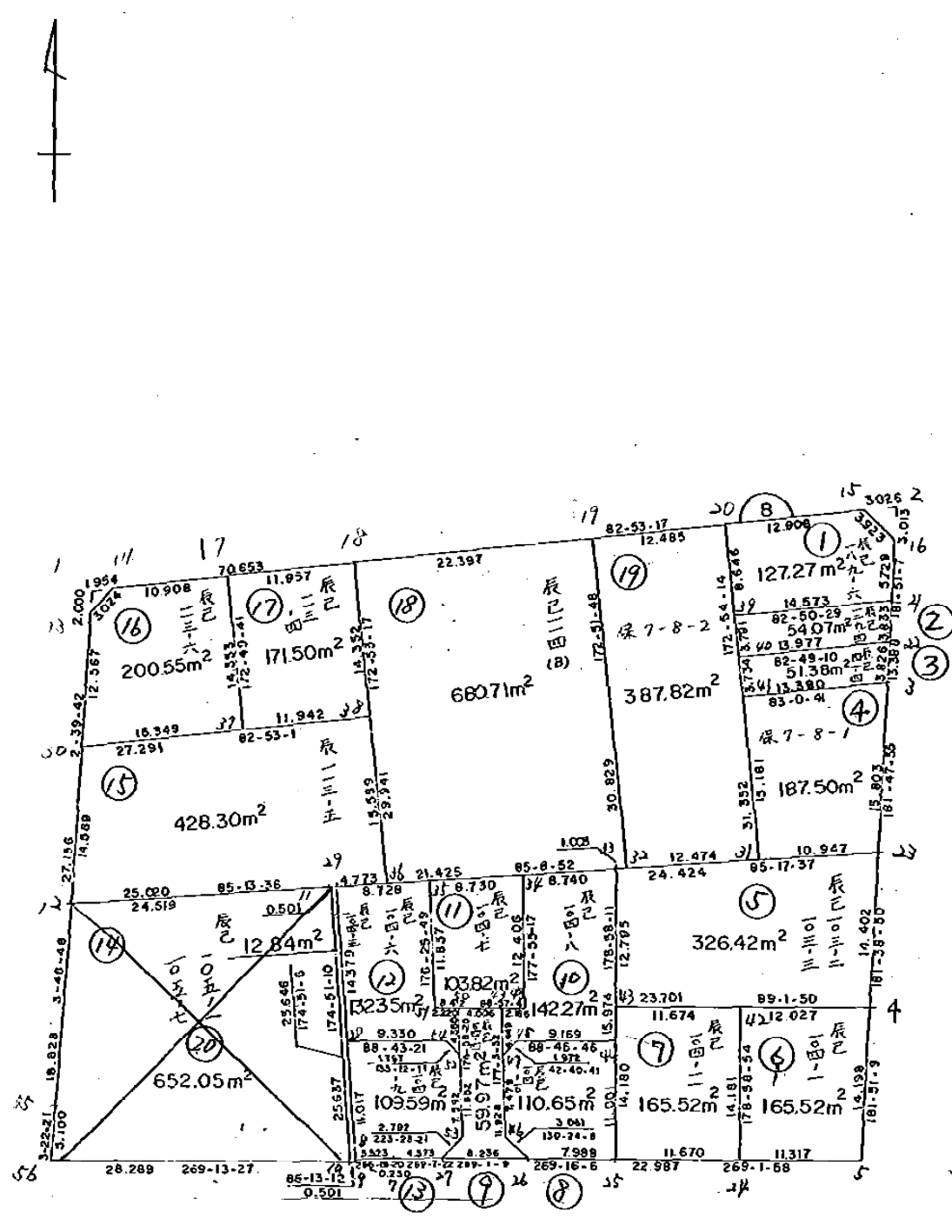


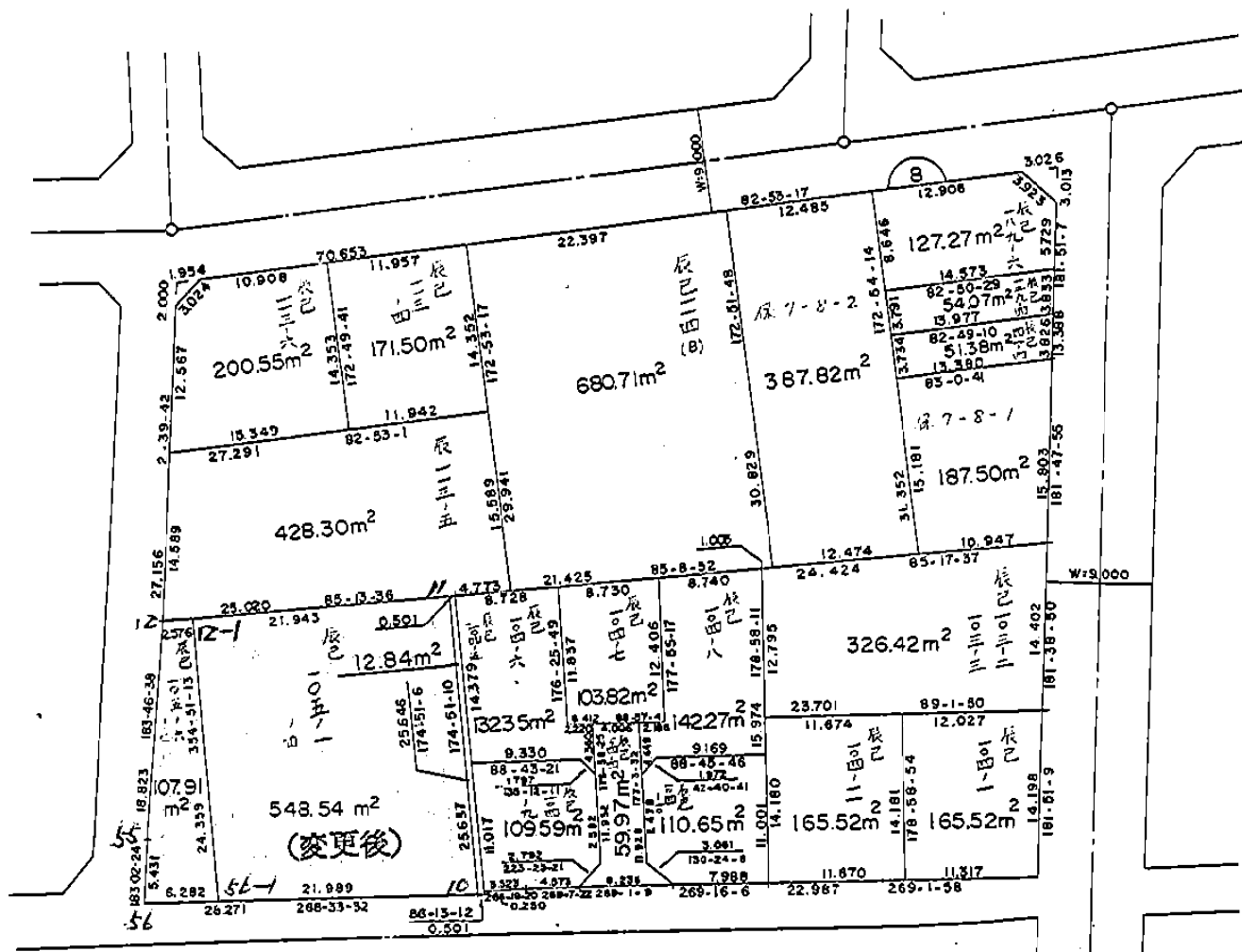
考 備 7-8 街 区 番 号 图 地 路 图 画



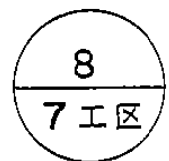
(変更前)

2.61.3.28 第 20 号地 (20LOT)

点 検 者
記 入 者



権利達いのための分筆



S = 1 : 500

面積計算書

街区

8

工区

7

画地番号

計算者

精算者

備考

(変更前)

点名	①	②	③	④	② × ③	① × ④
	X	$X_{n-1} - X_{n+1}$	Y	$Y_{n-1} - Y_{n+1}$		
7-8-13	-151357.642	-29.367	-40454.161	-3.293	1188017.346087	498420.715106
7-8-14	-151355.402	-10.987	-40452.129	-72.141	444447.541323	10918930.055682
7-8-15	-151346.655	-6.111	-40382.020	-73.015	246774.524220	11050576.014825
7-8-16	-151349.291	16.817	-40379.114	-2.473	-646752.268938	374286.796643
7-8-3	-151362.672	29.176	-40379.547	0.929	-1178113.663272	-140615.922288
7-8-23	-151378.467	30.191	-40380.043	0.910	-1219113.878213	-137754.404970
7-8-4	-151392.863	28.587	-40380.457	0.873	-1154356.124259	-132165.969399
7-8-5	-151407.054	14.579	-40380.916	23.443	-588713.374364	-3549435.566922
7-8-25	-151407.442	0.490	-40403.900	30.971	-19797.911000	-4689239.886182
7-8-26	-151407.544	0.243	-40411.887	16.222	-9820.088541	-2456133.178768
7-8-27	-151407.685	0.211	-40420.122	12.807	-8528.645742	-1939078.221795
7-8-7	-151407.755	0.296	-40424.694	8.088	-11965.709424	-1224585.922440
7-8-8	-151407.981	0.475	-40428.210	3.494	-19203.399750	-529019.485614
7-8-9	-151408.230	0.282	-40428.188	0.478	-11400.749016	-72373.133940

面積計算書

点 名	①	②	③	④	② × ③	① × ④
	X	$X_{n-1} - X_{n+1}$	Y	$Y_{n-1} - Y_{n+1}$		
7-8-10	-151408.263	0.416	-40428.688	28.786	-16818.334208	-4358438.258718
7-8-56	-151408.646	-4.708	-40456.974	27.986	190471.433592	-4237322.366956
7-8-55	-151403.555	-23.877	-40456.674	-1.552	965984.005098	234978.317360
7-8-12	-151384.769	-45.913	-40455.422	-2.513	1857429.790286	380429.924497
TOTAL					8540.493879	8540.493879
				メセキ	4270.246939	

(変更前)

面積計算書

工
区

7

ブ
ロ
ック

8

計
算
者精
算
者備
考

5.61.3.27 (変更後)

点	①	②	③	④	① × ④	② × ③
	X	$X_{n-1} - X_{n+1}$	Y	$Y_{n-1} - Y_{n+1}$		
7-8-13	-151357.642 /	-29.367	-40454.161 /	-3.293	498420.715106	1188017.346087
7-8-14	-151355.402 /	-10.987	-40452.129 /	-72.141	10918930.053682	444447.541323
7-8-15	-151346.655 /	-6.111	-40382.020 /	-73.015	11050576.014825	246774.524220
7-8-16	-151349.291 /	16.017	-40379.114 /	-2.473	374286.796643	-646752.268938
7-8-3	-151362.672 /	29.176	-40379.547 /	0.929	-140615.922288	-1178113.663272
7-8-23	-151378.467 /	30.191	-40380.043 /	0.910	-137754.404970	-1219113.878213
7-8-4	-151392.863 /	28.587	-40380.457 /	0.873	-132165.969399	-1154356.124259
7-8-5	-151407.054 /	14.579	-40380.916 /	23.443	-3549435.566922	-588713.374364
7-8-25	-151407.442 /	0.490	-40403.900 /	30.971	-4689239.886182	-19797.911000
7-8-26	-151407.544 /	0.243	-40411.887 /	16.222	-2456133.178768	-9820.088541
7-8-27	-151407.685 /	0.211	-40420.122 /	12.807	-1939078.221795	-8528.645742
7-8-7	-151407.755 /	0.296	-40424.694 /	8.088	-1224585.922440	-11965.709424
7-8-8	-151407.981 /	0.475	-40428.210 /	3.494	-529019.485614	-19203.399750
7-8-9	-151408.230 /	0.282	-40428.188 /	0.478	-72373.133940	-11400.749016

面積計算書

点	①	②	③	④	① × ④	② × ③
	X	$X_{n-1} - X_{n+1}$	Y	$Y_{n-1} - Y_{n+1}$		
7-8-10	-151408.263 ✓	0.744	-40428.688 ✓	28.762	-4354804.460406	-30078.943872
7-8-56	-151408.974 ✓	-4.712	-40456.950 ✓	27.974	-4235514.638676	190633.148400
7-8-55	-151403.551 ✓	-24.205	-40456.662 ✓	-1.528	231344.625928	979253.503710
7-8-12	-151384.769 ✓	-45.909	-40455.422 ✓	-2.501	378613.307269	1857267.968598
TOTAL					-8549.275947	8549.275947
				合計	4274.637973	

5.61.3.27 (変更後)

面積計算書		街区 8	工区 7	西地番号 10	計算者	精算者	備考
点名	①	②	③	④	② × ③		① × ④
	X	$X_{n-1} - X_{n+1}$	Y	$Y_{n-1} - Y_{n+1}$			
7-8-47	-151398.091	-2.993	-40414.602	1.565	120960.903786		-236938.012415
7-8-49	-151393.648	-4.483	-40414.830	-1.958	181179.682890		296428.762784
7-8-48	-151393.608	-12.438	-40412.644	-1.736	502652.466072		262819.303488
7-8-34	-151381.210	-13.137	-40413.094	-8.259	530906.815878		1250257.413390
7-8-33	-151380.471	15.233	-40404.385	-8.996	-615479.996705		1361818.717116
7-8-44	-151396.443	16.170	-40404.098	8.880	-653334.264660		-1344400.413840
7-8-45	-151396.641	1.648	-40413.265	10.504	-66601.060720		-1590270.317064
TOTAL					284.546541		284.546541
				メンセキ	142.273270		

面積計算書

点名	① X	② $X_{n-1} - X_{n+1}$	③ Y	④ $Y_{n-1} - Y_{n+1}$	② × ③	① × ④
7-8-12	-151384.769	-20.826	-40455.422	-25.686	842524.618572	3888469.176534
7-8-11	-151382.729	23.494	-40430.988	-26.734	-949885.632072	4047065.877086
7-8-10	-151408.263	25.917	-40428.688	25.986	-1047790.306896	-3934495.122318
7-8-56	-151408.646	-4.708	-40456.976	27.986	190471.433592	-4237322.366956
7-8-55	-151403.555	-23.877	-40456.674	-1.552	965984.005098	234978.317360
TOTAL					1304.118294	1304.118294
				合計	652.059147	

(変更前)

昭和61年3月28日 変更

BNO. 8 各筆面積計算書

画番	地号	地番	隔切	地積	摘要
1		辰巳 189 - 6		127 27	
2		辰巳 129 - 4		54 07	
3		辰巳 41 - 4		51 38	
4		保 7 - 8 - 1		187 50	
5		辰巳 103 - 2; 103 - 3		326 42	
6		辰巳 104 - 1		165 52	
7		辰巳 104 - 11		165 52	
8		辰巳 104 - 10		110 65	
9		辰巳 104 - 4		59 97	
10		辰巳 104 - 8		142 27	
11		辰巳 104 - 7		103 82	
12		辰巳 104 - 6		132 35	
13		辰巳 104 - 9		109 59	
14		辰巳 104 - 5		12 84	
15		辰巳 113 - 5		428 30	
16		辰巳 113 - 6		200 55	
17		辰巳 113 - 4		171 50	
18		辰巳 114 (B)		680 71	
19		保 7 - 8 - 2		387 82	
20		辰巳 105 - 1, 105 - 7		656 45 652 05	
		合 計		4274 50 4270 10	
		全 体		4274 63 4270 24	

計算者

吉原

点検者

吉原