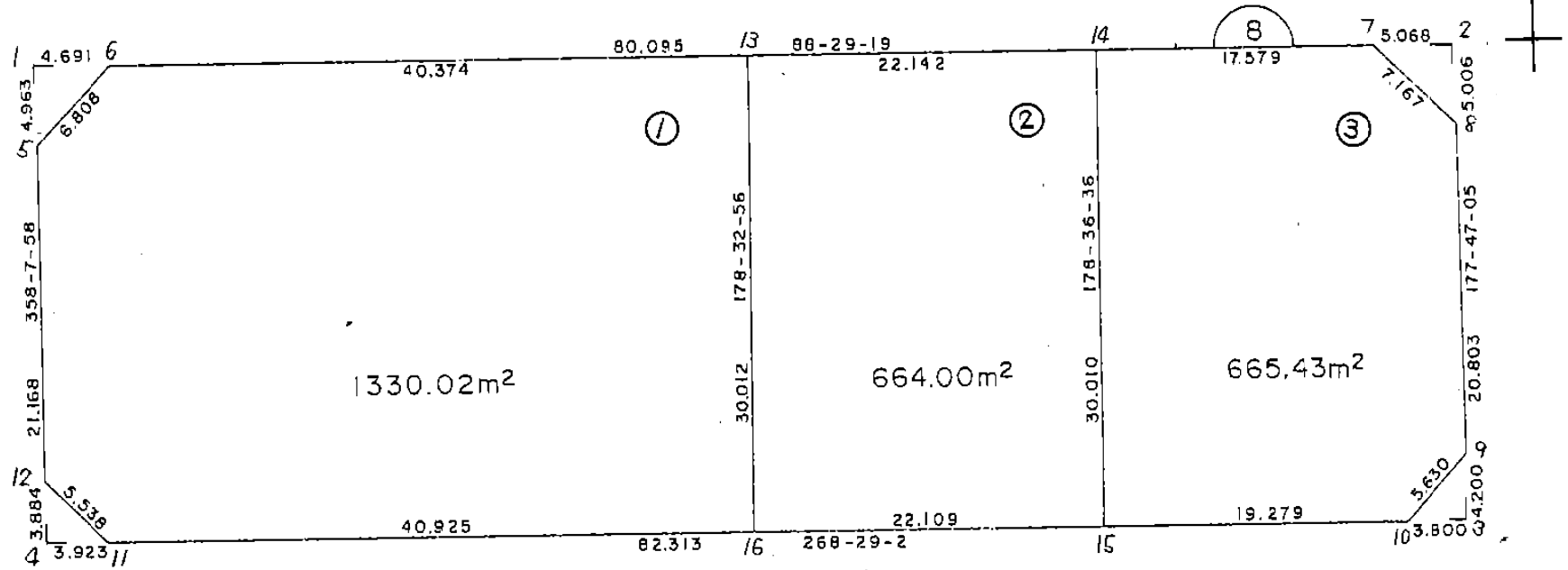


画地略図

街区番号

6-8

備考



記入者

点検者

面積計算書

工区

6

フロア

8

計算者



精算書



備考

全体

点	①	②	③	④	⑤	⑥	③ X ⑤	④ X ⑥				
	X	X - (定数)	X _{n-1} - X _{n+1}	Y	Y - (定数)	Y _{n-1} - Y _{n+1}	+	-	+	-		
1	-150. 717.80	-150. 710 7.80	-32.369	-40. 455.911	-40. 360 95.911	-88.845	3104.54315		693.079845			
2	715.43	5.431	+27.617	366.088	6.088	-90.983		168.132296	494.128673			
3	745.418	35.418	+32.369	364.928	4.928	+88.845		159.514432		3146.712210		
4	747.800	37.800	-27.617	454.933	94.933	+90.983	2621.76466			3439.157400		
							5726.307820	327.646728	1187.208518	6585.869610		
							5398.661092			5398.661092		
							x 1/2 = 2699.330546					
							≒ 2699.33					
		2699.33 - (11.64 + 12.68 + 7.98 + 7.62) = 2659.41										
			39.92									

面積計算書

工
区

6

ブロック

8

計算者

徳山

精算書



備考

スミキリ /
スミキリ 2

点	①	②	3	4	⑤	⑥	③ X	④	2 X	⑥
	X	X - (定数)	X _{n-1} - X _{n+1}	Y	Y - (定数)	Y _{n-1} - Y _{n+1}	+	-	+	-
1	^{-150.} 717.801	^{-150.710} 7.801	-5.084	^{-40.} 455.911	^{-40.450} 5.911	-4.528	30.051524			35.322928
6	717.677	7.677	+4.960	451.221	1.221	-0.162		6.056160	1.243674	
5	722.761	12.761	+0.124	455.749	5.749	+4.690		0.712876		59.849090
							30.051524	6.769036	36.566602	59.849090
							23.282488			23.282488
							x/2 = 11.641244			
							= 11.64			
2	^{-150.} 715.431	^{-150.710} 5.431	+4.868	^{-40.} 366.088	^{-40.360} 6.088	-5.260		29.636384	28.567060	
8	720.433	10.433	+0.134	365.894	5.894	+5.066		0.789796		62.853578
7	715.565	5.565	-5.002	371.154	11.154	+0.194	55.792308			1.079610
							55.792308	30.426180	28.567060	53.933188
							25.366128			25.366128
							x/2 = 12.683064			
							= 12.68			

面積計算書

工
区

6

ブロック

8

計算者



精算書



備考

ズミキリ 3

ズミキリ 4

点	①	②	③	④	⑤	⑥	③ × ⑤		② × ⑥	
	X	X - (定数)	X _{n-1} - X _{n+1}	Y	Y - (定数)	Y _{n-1} - Y _{n+1}	+	-	+	-
3	-150.745.418	-150.740 5.418	+4.298	-40.764.728	-40.360 4.928	+3.637			21.180544	19.705266
10	745.519	5.519	-4.197	368.727	8.727	+0.162	36.627219			0.894078
9	741.221	1.221	-0.101	365.090	5.090	-3.799	0.514090		4.638579	
							37.141309	21.180544	4.638579	20.599344
							15.960765			15.960765
							× 1/2 = 7.9803825			
							≒ 7.98			
4	-150.747.800	-150.740 7.800	-3.778	-40.454.933	-40.450 4.933	+4.050	18.636874			31.590000
12	743.918	3.918	-0.104	455.060	5.060	-3.923	0.526240		15.370314	
11	747.696	7.696	+3.882	451.010	1.010	-0.127		3.920820	0.977392	
							19.163114	3.920820	16.347706	31.590000
							15.242294			15.242294
							× 1/2 = 7.621147			
							≒ 7.62			

面積計算書

工
区

6

7
0
7
7

8

計算者

(印)

精算書





備考

1.
2.

点	①	②	③	④	⑤	⑥	③	X	⑤	②	X	⑥			
	X	X - (定数)	X _{n-1} - X _{n+1}	Y	Y - (定数)	Y _{n-1} - Y _{n+1}	+	-	+	-					
13	^{-150.} 716.612	^{-150.710} 6.612	+28.937	^{-40.} 410.861	^{-40.410} 0.861	-41.120				24.914757	271.885440				
16	746.614	36.614	+31.084	410.101	0.101	+40.149				3.139484		1470.015486			
11	747.696	37.696	-2.696	451.010	41.010	+44.959			110.562960			1694.774464			
12	743.918	33.918	-24.935	455.060	45.060	+4.739			123.571100			160.737402			
5	722.761	12.761	-26.241	455.749	45.749	-3.839			1200.499509			48.989479			
6	717.677	7.677	-6.149	451.221	41.221	-44.888			253.467929			344.605176			
									2688.101498			665.480095	3325.527352		
									2660.04725				2660.04725		
									$\times 1/2 = 1330.0236285$						
13	^{-150.} 716.612	^{-150.710} 6.612	-30.586	^{-40.} 410.861	^{-40.380} 30.861	-21.374					943.914546		141.324888		
14	716.028	6.028	+29.417	388.727	8.727	-22.862				256.722159			137.812136		
15	746.029	36.029	+30.586	387.999	7.999	+21.374				244.657414			770.083846		
16	746.614	36.614	-29.417	410.101	30.101	+22.862				885.481117			837.069268		
									1829.395613				501.379573	279.137024	1607.153114
									1328.016090						1328.016090
									$\times 1/2 = 664.008045$						

面積計算書

工区 6 フロック 8 計算者  精算書  備考 3.

項	①	②	3	4	5	⑥	③	④	⑤	②	⑥
	X	X - (定数)	X _{n-1} - X _{n+1}	Y	Y - (定数)	Y _{n-1} - Y _{n+1}	+	-	+	-	
7	^{-150.} 715.565	^{-150,710} 5.565	+ 4.405	^{-40.} 371.154	^{-40,360} 11.154	- 22.833		49.133370		127.065645	
8	720.433	10.433	+ 25.656	365.894	5.894	- 6.064		151.216464		63.265712	
9	741.221	31.221	+ 25.086	365.090	5.090	+ 2.833		127.687740		88.449093	
10	745.519	35.519	+ 4.808	368.727	8.727	+ 22.909		41.959416		813.704771	
15	746.029	36.029	- 29.491	387.999	27.999	+ 20.000	825.718509			720.580000	
14	716.028	6.028	- 30.464	388.727	28.727	- 16.845	875.139328			101.541660	
							1700.857837	369.996990	291.873017	1622.733864	
							1330.860847			1330.860847	
							x 1/2 =			665.4304235	

BNO. 8 各筆面積計算書

画番	地号	地番	隅切	地積	摘要
1				1330.02	
2				664.00	
3				665.43	
		計		2659.45	
		全体		2659.41	
			計算者		点検者