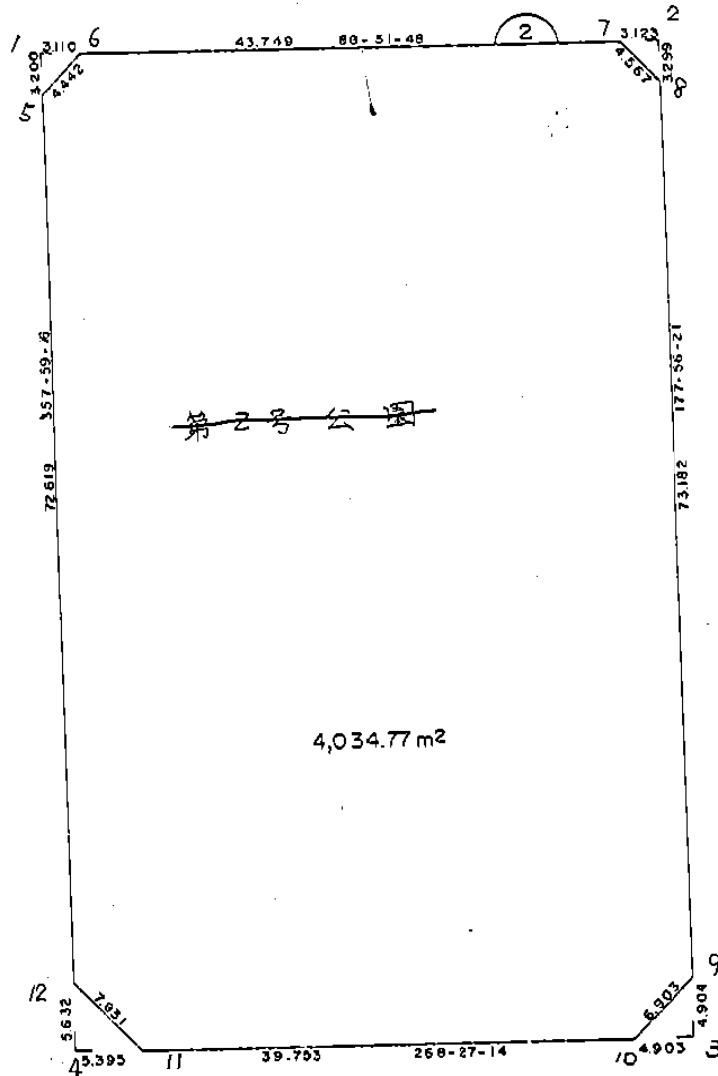


画地略図

街区番号

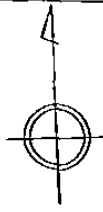
6-2

備考



記入者

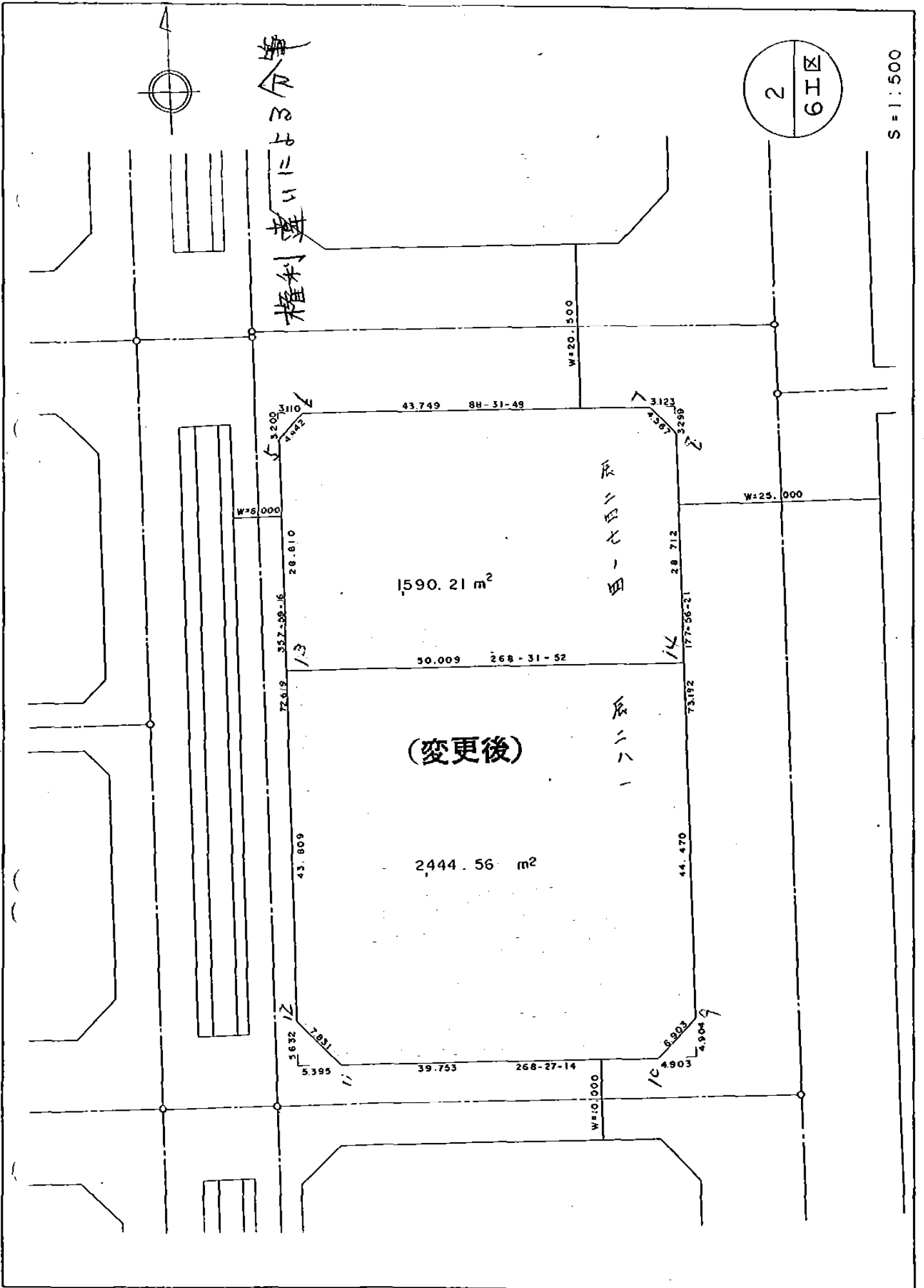
点検者



権利変換命令

2  
6工区

S = 1 : 500







面積計算書

工  
区

6

フ  
ロ  
ック

2

計  
算  
者



精  
算  
書



備  
考

全体

点	①	②	③	④	⑤	⑥	③ × ⑤	④ × ⑥
	X	X - (定数)	X <sub>n-1</sub> - X <sub>n+1</sub>	Y	Y - (定数)	Y <sub>n-1</sub> - Y <sub>n+1</sub>	+	-
1	-150.619.459	-150.610 9.459	-82.683	40.346.888	56.888	-47.106	44.703.670.604	4415.575.6514
2	618.177	8.177	+80.051	296.922	6.922	-52.893	544.113.022	432.506.061
3	699.510	89.510	+82.683	293.995	3.995	+47.106	330.318.585	44.216.458.040
4	700.860	90.860	-80.051	344.028	44.028	+52.893	4324.995.028	44.805.857.980
							9.028.665.932	884.431.607
							878.081.715	9.022.316.040
							8.144.234.325	8.144.234.325
							× 1/2 = 4.072.117.162	
							= 4.072.11	
							(4.072.11) - (4.98 + 5.15 + 12.02 + 15.19) = 4.034.77	
							47.24	

面積計算書

工  
区

6

フ  
ロ  
ック

2

計  
算  
者



精  
算  
書



備  
考

点	①	②	③	④	⑤	⑥	③ X ⑤		② X ⑥	
	X	X - (定数) X <sub>n-1</sub> - X <sub>n+1</sub>	Y	Y - (定数) Y <sub>n-1</sub> - Y <sub>n+1</sub>	+	-	+	-		
8	-150.621474	-150.610 11.474	+76.542	-40.296803	6.803	-5.872	519.422646	67.575378		
9	694.609	84.609	+78.168	294.172	4.172	+2.093	326.116896	177.086637		
10	699.642	89.642	+6.104	298.894	8.896	+44.463	54.310080	3,985.752246		
11	700.714	90.714	-4.411	338.634	48.634	+45.030	214.528980	4,112.064220		
12	695.231	85.231	-78.057	344.226	44.226	+8.141	44,232.718882	693.865471		
5	622.657	12.657	-75.852	346.776	6.776	-0.447	4,306.521422	5,657.679		
6	619.379	9.379	-4.400	343.779	3.779	-46.732	236.627600	1138.299428		
7	618.257	8.257	+2.095	300.044	10.044	-46.976	21.042180	387.880832		
							8,990.448619	920.891812	899.215267	8,968.770044
							8,069.556807		8,069.556807	
							x 1/2 = 4034.7784035			

面積計算書

工  
区

6

フ  
ロ  
ツ  
ク

2

計  
算  
者



精  
算  
書



備  
考

スミフリ /

2

点	①	②	③	④	⑤	⑥	③ × ⑤		② × ⑥	
	X	X - (定数)	X <sub>n-1</sub> - X <sub>n+1</sub>	Y	Y - (定数)	Y <sub>n-1</sub> - Y <sub>n+1</sub>	+	-	+	-
1	-150.619.457	-150.610 9.459	-3.278	-40.346.888	6.888	-2.997	22.578864		28.348623	
6	619.379	9.379	+3.198	343.779	3.779	-0.112		12.085747	1.050448	
f	622.657	12.657	+0.080	346.776	6.776	+3.109		0.542080		39.350613
							22.578864	12.627322	29.399071	39.350613
							9.951542			9.951542
							× 1/2 = 4.975771			
2	-150.618.177	-150.610 8.177	+3.217	-40.296.922	6.922	-3.241	22.268074		26.501657	
8	621.474	11.474	+0.080	296.803	6.803	+3.122		0.544240		35.821828
7	618.257	8.257	-3.297	300.044	10.044	+0.119	33.115068			0.982583
							33.115068	22.812314	26.501657	36.804411
							10.302754			10.302754
							× 1/2 = 5.151377			

面積計算書

工区 6 フロック 20 計算者 (印) 精算書 (印) 備考 スキリ 0

項	①	②	3	4	5	⑥	③	⑤	②	⑥
	X	X - (定数)	$X_{n-1} - X_{n+1}$	Y	Y - (定数)	$Y_{n-1} - Y_{n+1}$	+	-	+	-
3	-160.699.510	-150.690 9.510	+ 5.033	-110.293.994	3.995	+ 11.724			20.106.835	111.921.240
10	699.642	9.642	- 4.901	298.896	8.896	+ 0.177	113.599.296			1.706.634
9	694.609	4.609	- 0.132	294.172	4.172	- 4.901	0.560.704		22.588.709	
							44.150.000	20.106.835	22.588.709	46.621.874
							24.043.165			24.043.165
										$\times \frac{1}{2} = 12.021.582.5$
11	-150.700.860	-150.690 10.860	- 5.483	-110.344.028	14.028	+ 5.591	76.915.524			60.718.260
12	695.231	5.231	- 0.146	344.226	14.226	- 5.393	2.076.996		28.210.783	
11	700.714	10.714	+ 5.629	338.605	8.605	- 0.198		48.606.415	2.121.372	
							78.992.420	48.606.415	30.332.165	60.718.260
							30.386.105			30.386.105
										$\times \frac{1}{2} = 15.193.052.5$



BNO. 2 各筆面積計算書

画番 地号	地番	隅切	地積	摘要
1			4034.77	一筆
計算者		点検者		