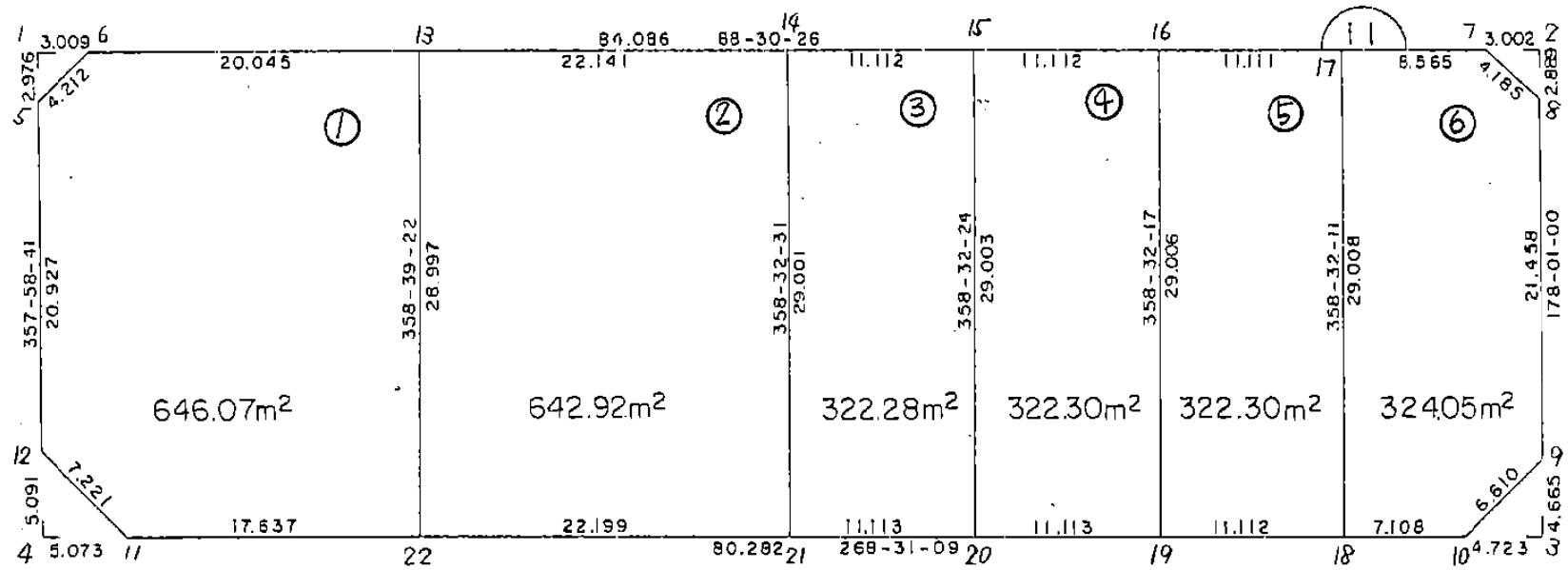


画地略図

街区番号

6-11

備考



記入者

点検者

面積計算書

工
区

6

7
0
7
7

11

計
算
者



精
算
書



備
考

全体

項	①	②	③	④	⑤	⑥	③ × ⑤	② × ⑥
	X	X - (定数)	X _{n-1} - X _{n+1}	Y	Y - (定数)	Y _{n-1} - Y _{n+1}	+	-
1	^{-150.} 574.893	^{-150.570} 4.893	-31.323	^{-40.} 461.236	^{-40.370} 91.236	-89.044	2857.785228	435.692292
2	572.546	2.546	+26.648	371.169	1.169	-91.071	31.151512	231.866766
3	601.541	31.541	+31.323	370.165	0.165	+89.044	5.168295	2808.536804
4	603.869	33.869	-26.648	460.213	90.213	+91.071	2403.996024	3084.483699
							5261.781252	36.319807
							5225.461445	667.559058
								5893.020503
							x/2 = 2612.7307225	5225.461445
				2612.73	(4.47 + 4.33 + 11.01 + 12.91)			2580.01
					32.72			

面積計算書

工
区

6

フ
ロ
ッ
ク

11

計
算
者



精
算
書



備
考

スミキリ /
スミキリ 乙

点	①	②	3	4	5	⑥	⑧	X	⑤	②	X	⑥
	X	X - (定数)	X _{n-1} - X _{n+1}	Y	Y - (定数)	Y _{n-1} - Y _{n+1}	+	-	+	-		
1	^{-150.} 574.893	^{-150.570} 4.893	-3.052	^{-40.} 461.236	^{-40.450} 11.236	-2.903	34.292272			14.204379		
6	574.815	4.815	+2.974	458.228	8.228	-0.105		24.470072		0.505575		
5	577.867	7.867	+0.078	461.131	11.131	+3.008		0.868218				23.663936
							34.292272		25.338290		14.709954	23.663936
							8.953982					8.953982
							x1/2 =	4.476991				
2	^{-150.} 572.546	^{-150.570} 2.546	+2.809	^{-40.} 371.169	^{-40.370} 1.169	-3.102				3.283721		7.897692
8	575.433	5.433	+0.078	371.069	1.069	+3.002				0.083382		16.309866
7	572.624	2.624	-2.887	374.171	4.171	+0.100						0.262400
							12.041677					
							12.041677		3.367103		7.897692	16.572266
							8.674574					8.674574
							x1/2 =	4.337287				

面積計算書

工区 6 フック 11 計算者 (徳山) 精算書 (徳山) 備考 スミキリ 3 スミキリ 4

項	①	②	③	④	⑤	⑥	⑧	⑨	⑩	⑪
	X	X - (定数)	X _{n-1} - X _{n+1}	Y	Y - (定数)	Y _{n-1} - Y _{n+1}	+	-	+	-
3	-150, 601.541	-150.590 11.541	+ 4.785	-40, 370.165	-40.370 0.165	+ 4560		0.789525		52.626960
10	601.663	11.663	- 4.663	374.886	4.886	+ 0.161	22.783418			1.877743
9	596.878	6.878	- 0.122	370.326	0.326	- 4.721	0.039772		32.471038	
							22.823190	0.789525	32.471038	54.504703
							22.033665			22.033665
							x/2 = 11.0168325			
4	-150, 603.869	-150.590 13.869	- 4.957	-40, 460.213	-40.450 10.213	+ 5.251	50.625841			72.826119
12	598.781	8.781	- 0.131	460.393	10.393	- 5.071	1.361483		44.52845	
11	603.738	13.738	+ 5.088	455.142	5.142	- 0.180		26.162496	2.472840	
							51.987324	26.162496	47.001291	72.826119
							25.824828			25.824828
							x/2 = 12.912414			

面積計算書

工区 フロア 計算者 精算書 備考

点	①	②	③	④	⑤	⑥	⑧	⑨	⑩	⑪
	X	X - (定数)	X _{n-1} - X _{n+1}	Y	Y - (定数)	Y _{n-1} - Y _{n+1}	+	-	+	-
6	^{-150.} 574.815	^{-150.570} 4.815	-3.574	^{-40.} 458.228	^{-40.430} 28.228	-22.941	100.886872			110.460915
13	574.293	4.293	+28.467	438.190	8.190	-20.718		233.144730		88.942374
22	603.282	33.282	+29.445	437.510	7.510	+16.952		221.131950		564.196464
11	603.738	33.738	4.501	455.142	25.142	+22.883	113.164142			772.026654
12	598.781	28.781	-25.871	460.393	30.393	+5.989	786.297303			172.369409
5	577.867	7.867	-23.966	461.131	31.131	-2.165	746.085546			17.032055
							1746.433863	454.276680	216.435344	1508.592527
							1292.157183			1292.157183
							x1/2 = 646.0785915			
13	^{-150.} 574.293	^{-150.570} 4.293	-29.566	438.190	28.190	-21.454	833.465540			92.102022
14	573.716	3.716	+28.415	416.056	6.056	-22.872		172.081240		84.992352
21	602.708	32.708	+29.566	415.318	5.318	+21.454		157.231988		701.717432
22	603.282	33.282	-28.415	437.510	27.510	+22.872	781.696650			761.225904
							1615.162190	329.313228	177.094374	1462.943336
							1285.848962			1285.848962
							x1/2 = 642.924481			

面積計算書

工 区 6 7077 11 計算者 徳山 精算書 備考 3 4

点	①	②	③	④	⑤	⑥	③	⑤	②	⑥
	X	X - (定数)	X _{n-1} - X _{n+1}	Y	Y - (定数)	Y _{n-1} - Y _{n+1}	+	-	+	-
14	^{-150.} 573.716	^{-150.570} 3.716	-29.281	^{-40.} 416.056	^{-40.400} 16.056	-10.370	470.135736		38.534920	
15	573.427	3.427	+28.705	404.948	4.948	-11.847		142.032340	40.599669	
20	602.421	32.421	+29.281	404.209	4.209	+10.370		123.243729		336.205770
21	602.708	32.708	-28.705	415.318	15.318	+11.847	439.703190			387.491676
								909.838926	265.276069	729.134589
										723.697446
								644.562857		644.562857
										x/2 = 322.28142857
15	^{-150.} 573.427	^{-150.570} 3.427	-29.284	^{-40.} 404.948	^{-40.390} 14.948	-10.369	437.737232		35.534563	
16	573.137	3.137	+28.707	393.840	3.840	-11.848		110.234880	37.167176	
19	602.134	32.134	+29.284	393.100	3.100	+10.369		90.780400		333.197446
20	602.421	32.421	-28.707	404.209	14.209	+11.848	407.897763			384.124008
								845.634995	201.015280	722.701739
										717.321454
								644.619715		644.619715
										x/2 = 322.3098575

面積計算書

工 区 6
 フロック 11
 計算者 徳山
 精算書
 備考 5
 6

点	①	②	3	4	⑤	⑥	⑧ X	⑤	② X	⑥
	X	X - (定数)	X _{n-1} - X _{n+1}	Y	Y - (定数)	Y _{n-1} - Y _{n+1}	+	-	+	-
16	^{-150.} 573.137	^{-150.570} 3.137	-29.286	^{-40.} 393.840	^{-40.380} 13.840	-10.367	405.318240		32.521279	
17	572.848	2.848	+28.710	382.733	2.733	-11.848		78.464430	33.743104	
18	601.847	31.847	+29.286	381.992	1.992	+10.367		58.337712		330.157849
19	602.134	32.134	-28.710	393.100	13.100	+11.848	376.101000			380.723632
							781.419240	136.802142	66.264383	710.881481
							644.617098			644.617098
							x/2 = 322.308549			
17	^{-150.} 572.848	^{-150.570} 2.848	-29.223	^{-40.} 382.733	^{-40.370} 12.733	-7.82	372.096459		22.274208	
7	572.624	2.624	+2.585	374.171	4.171	-11.664		10.782035	30.606326	
8	575.433	5.433	+24.254	371.069	1.069	-3.845		25.927526	20.889885	
9	596.878	26.878	+26.230	370.326	0.326	+3.817		8.550980		102.593326
10	601.663	31.663	+4.969	374.886	4.886	+11.666		24.278534		369.380558
18	601.847	31.847	-28.815	381.992	11.992	+7.847	345.549480			249.903409
							717.645939	169.539075	73.770429	721.877293
							648.106864			648.106864
							x/2 = 324.053432			

BNO. 11 各筆面積計算書

画番 地号	地番	隅切	地積	摘要
1			646.07 ✓	
2			642.92 ✓	
3			322.28 ✓	
4			322.30 ✓	
5			322.30 ✓	
6			324.05 ✓	
	計		2579.92 ✓	
	全体		2580.01 ✓	
		計算者		点検者